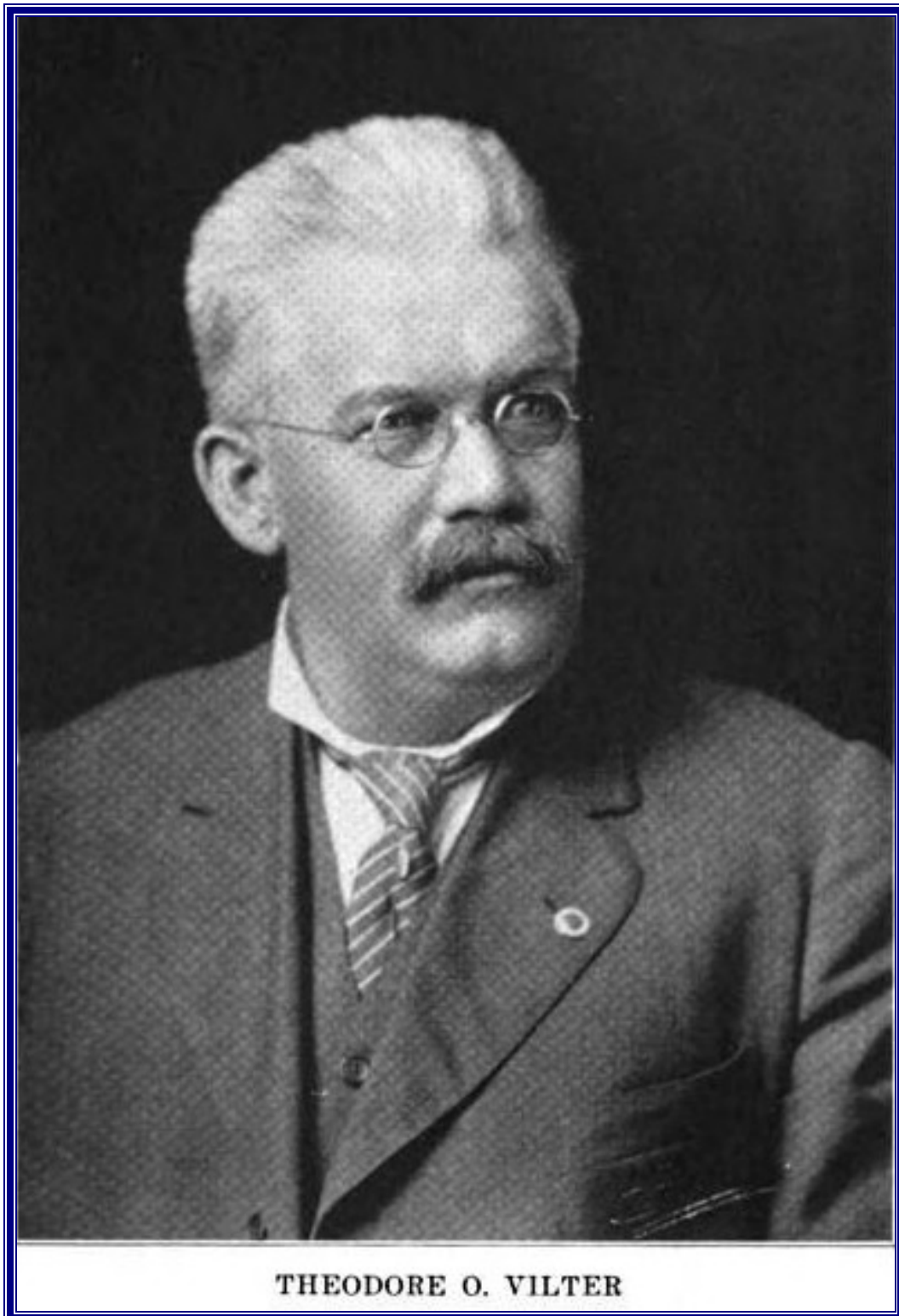
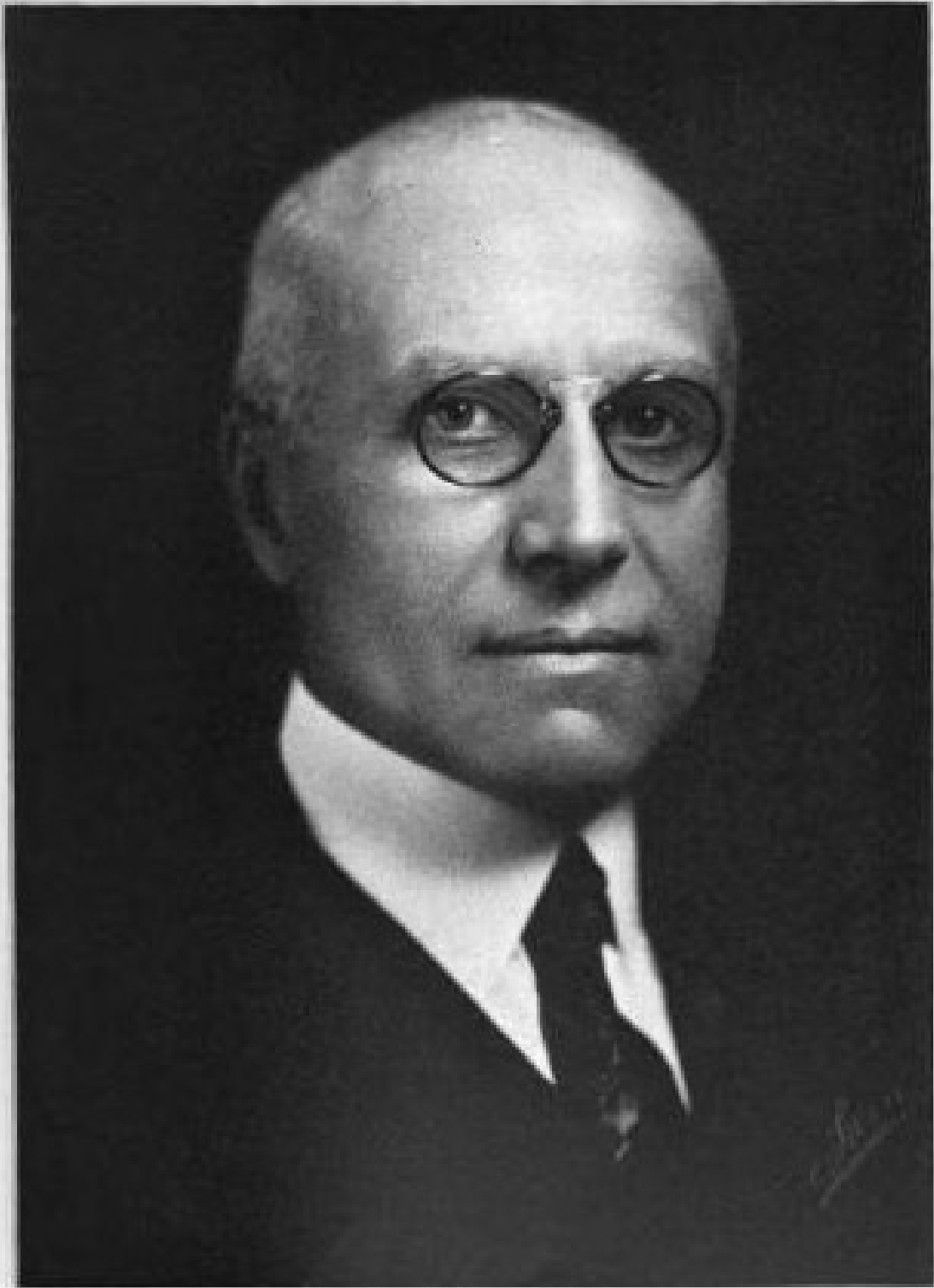


THEODORE VILTER

By EurIng Brian Roberts, CIBSE Heritage Group



1857-1919, President ASRE 1916



WILLIAM O. VILTER



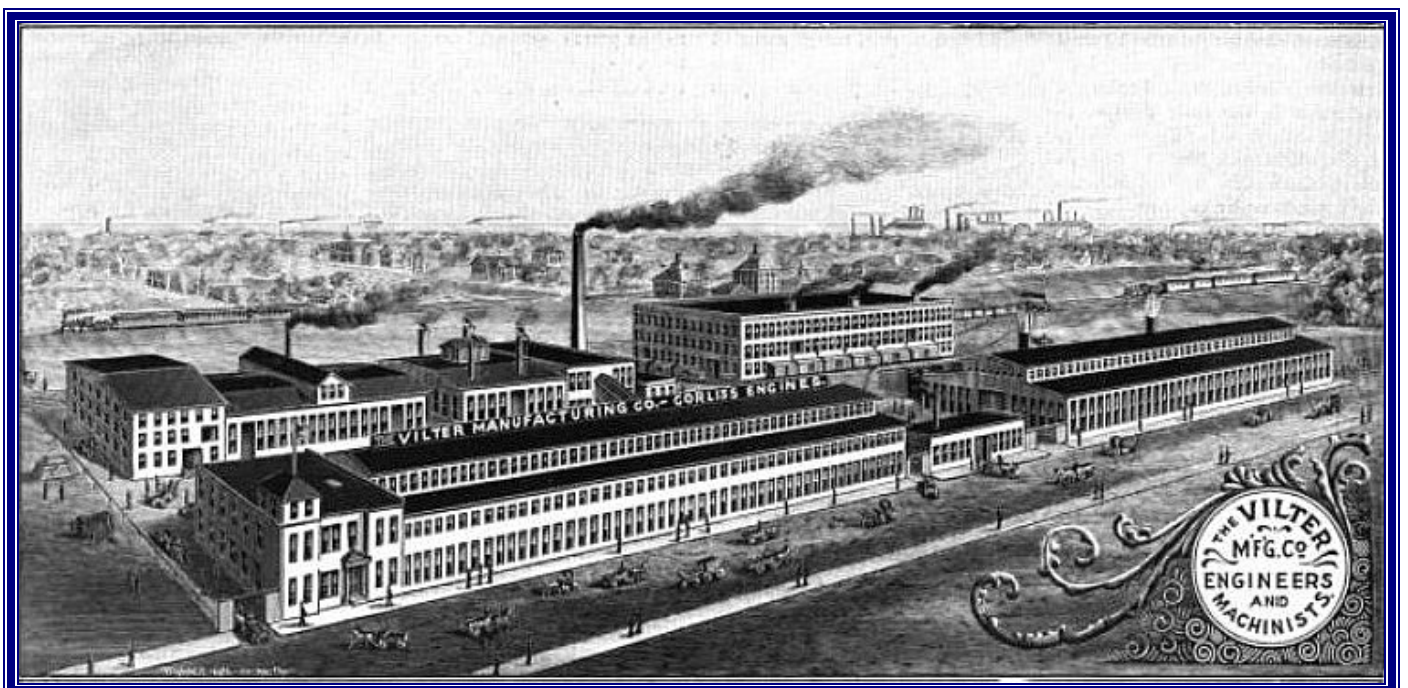
EMIL VILTER

Theodore Oltmanns (or Olimanns), later Vilter, was born on 25 October, 1857 in the province of Oldenburg in Germany. His father, a farmer, died when Theodore was an infant. His mother remarried to Ernst Vilter, the family moving to Milwaukee, Wisconsin, in 1871. Theodore continued his education at the Milwaukee German-English Academy before becoming a blacksmith's apprentice with the firm of Weisel.

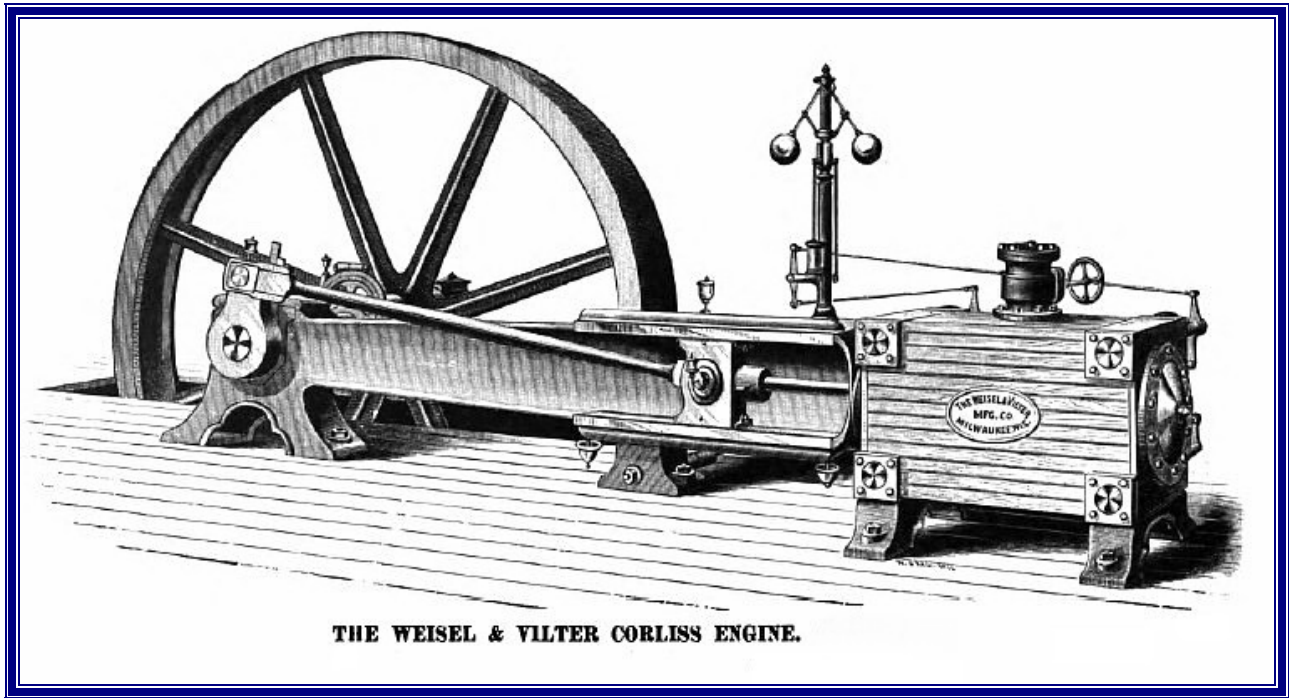
In 1867, Peter Weisel had started a small machine shop in Milwaukee. Theodore became a machine erector before promotion to foreman. In 1879, Ernest Vilter, father of Emil, Theodore and William, purchased a half interest in the business –the manufacture of slide-valve steam engines. The new company name was Weisel & Vilter and engaged in general machinery manufacturing including building engines, pumps and brewery machinery. [Milwaukee was then the centre of the US brewing industry and, over the years, Vilter built Corliss engines for the famous Pabst and Schlitz breweries]. In 1886, there was a further name change to Weisel & Vilter Manufacturing Company. Then in 1890, Weisel was bought out by the Vilter interests and Edward F Goes, and retired from business. Theodore Vilter became President of the company, with William as Secretary and Emil as General Superintendent. Goes became Vice-President. The company name changed to The Vilter Manufacturing Company.

In 1882, Vilter built its first refrigerating machine. This was of a horizontal double-acting design operated by a Vilter horizontal Corliss engine. The company specialised in refrigeration from that time on. The factory was destroyed in the disastrous fire which devastated a large part of Milwaukee in 1892, but was soon rebuilt on a larger scale in Clinton Street with improved facilities. The company prospered and continued to manufacture refrigerating machines “which were shipped to the four corners of the world.”

Theodore Vilter was active in both the industry and his community. He was a trustee of the German-English Academy, belonged to the Association of Commerce and served on the Milwaukee Sewerage Commission. He brought the International Convention of Refrigerating Engineers to Chicago in 1913. He was a member of ASME and was President of the ASRE in 1916. Theodore Vilter died on the morning of 19 September, 1919.

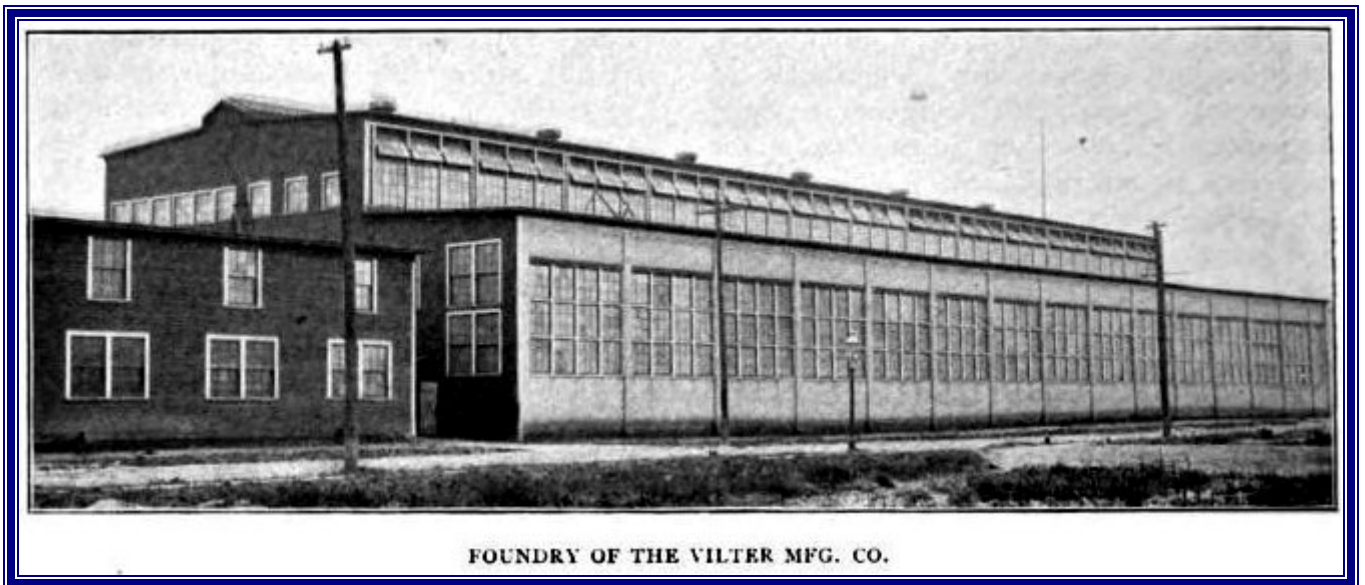


The factory in 1896



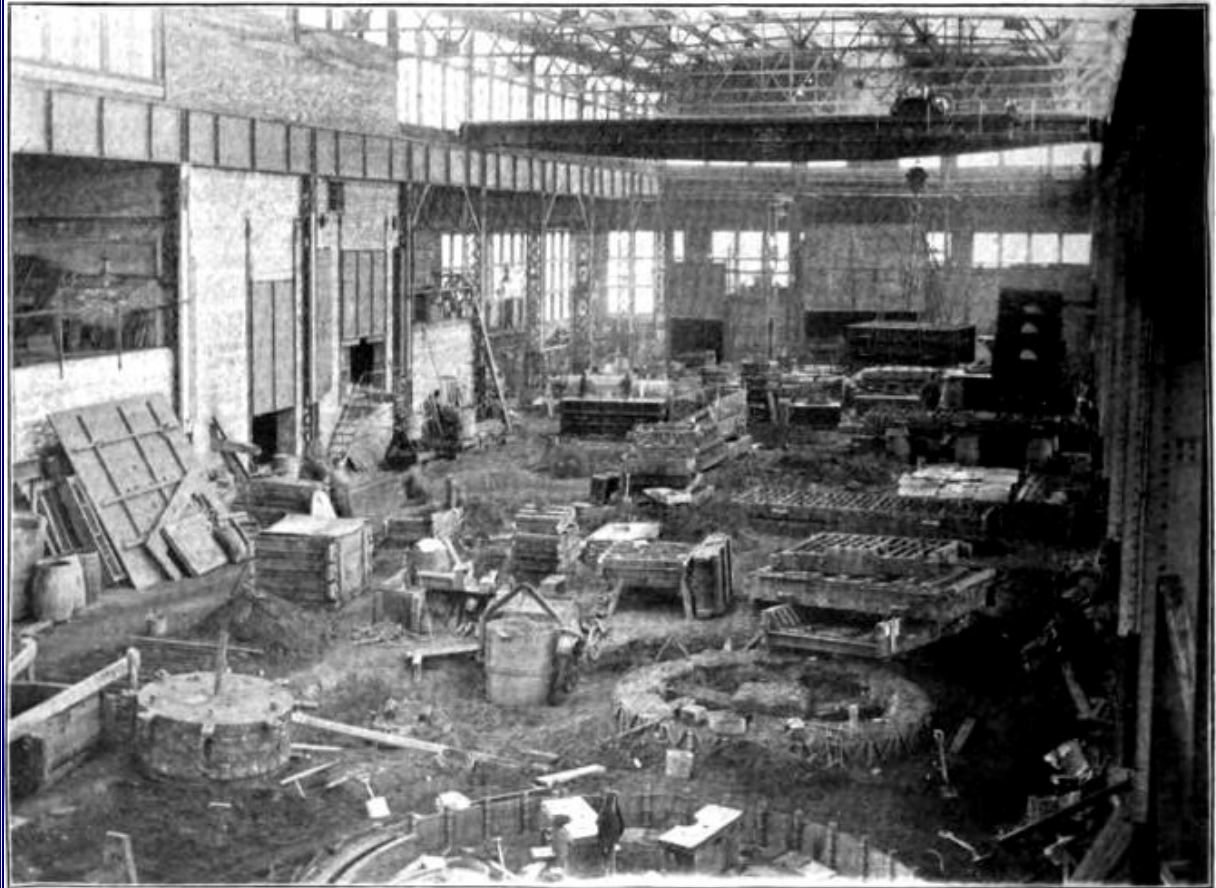
THE WEISEL & VILTER CORLISS ENGINE.

1890



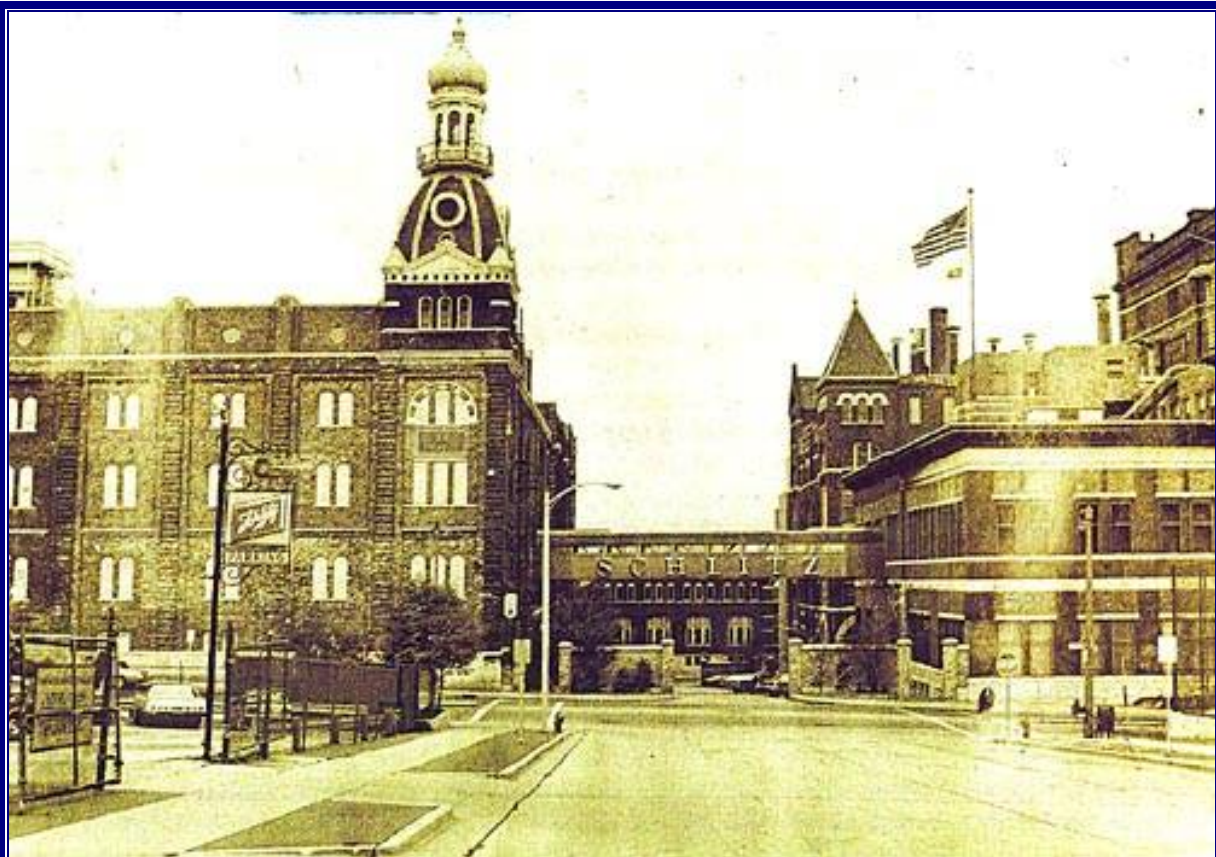
FOUNDRY OF THE VILTER MFG. CO.

1903

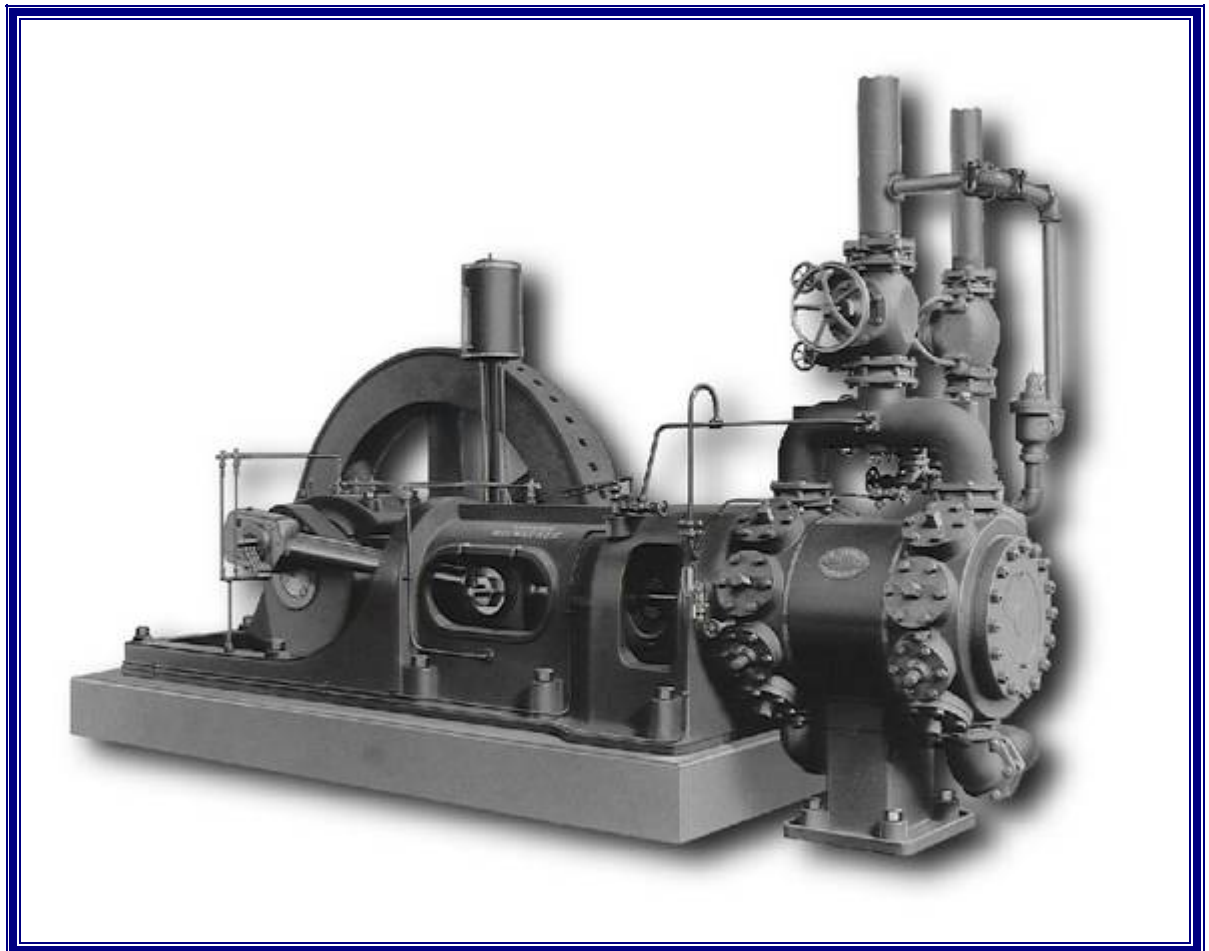
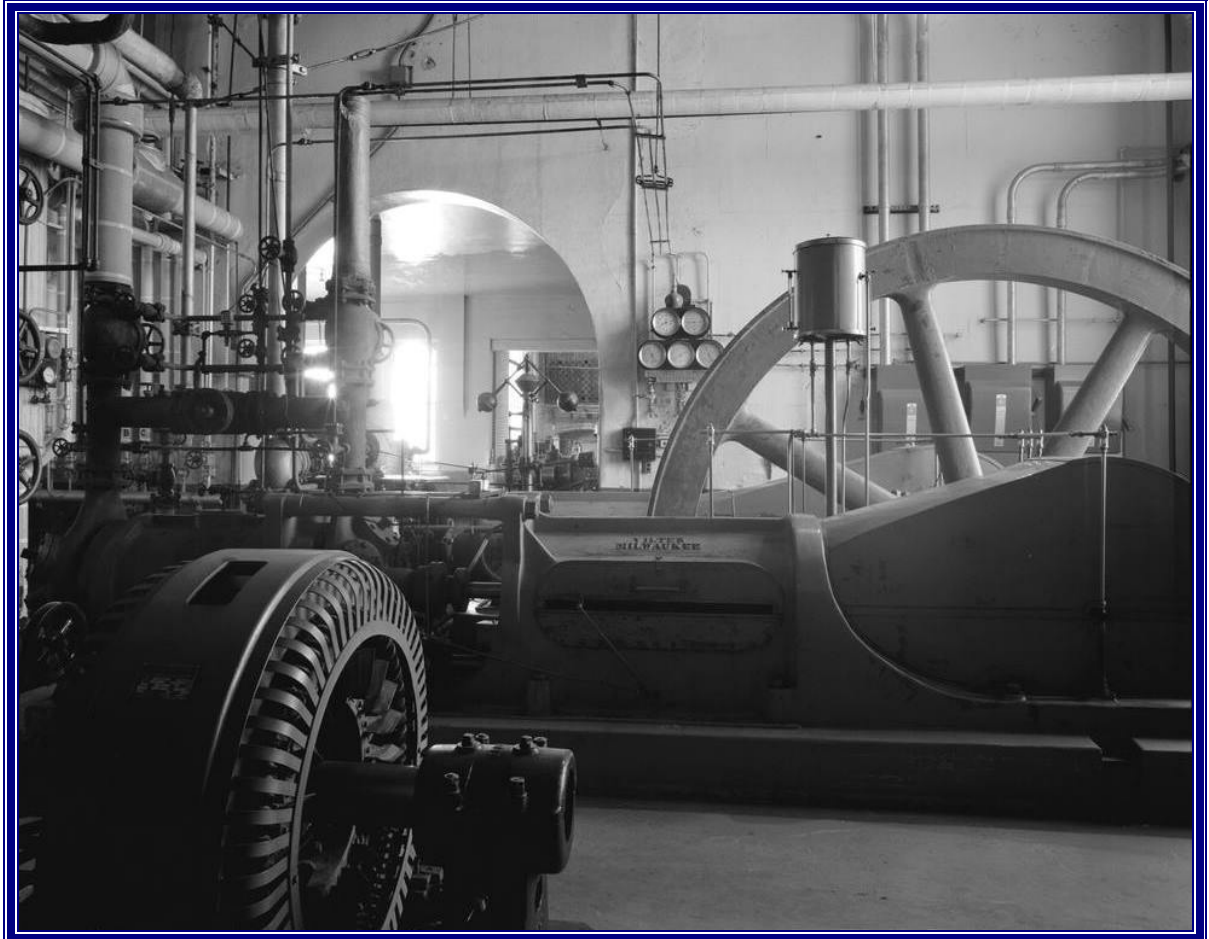


GENERAL VIEW OF MAIN MOLDING FLOOR IN THE VILTER FOUNDRY.

1903



The Schlitz Brewery, Milwaukee

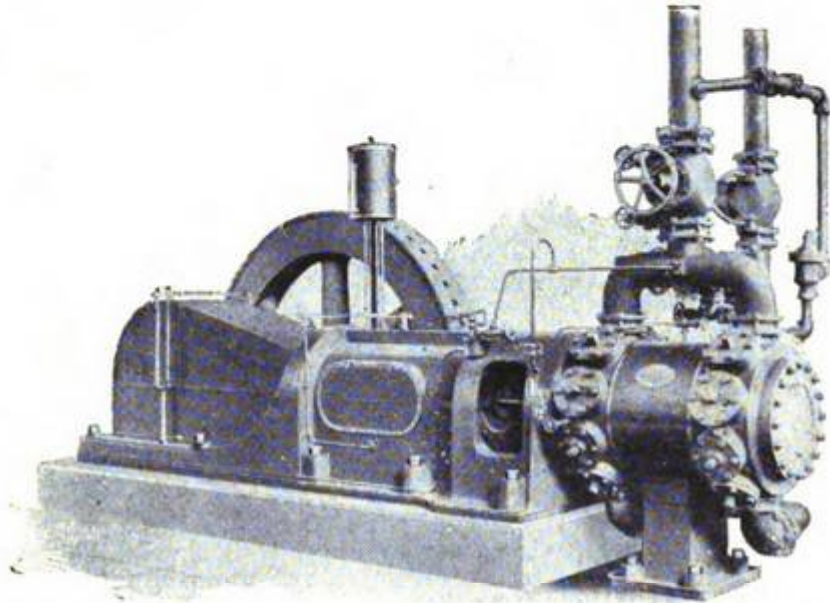


Early Vilter refrigerating machines

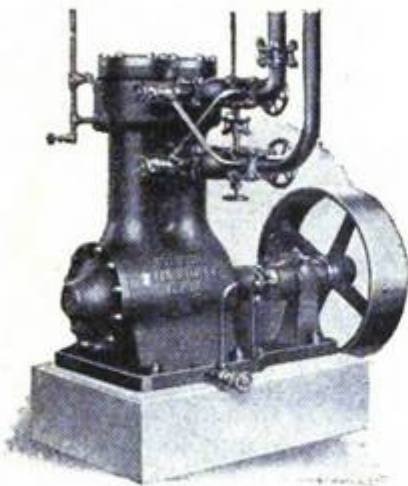
ESTABLISHED 1867

The Vilter Manufacturing Company

1022 Clinton Street, Milwaukee, Wis.



Vilter Horizontal High Speed Ammonia Compressor



**Vertical Twin Cylinder
Refrigerating Machine**

**Builders of
Ice Making and
Refrigerating
Machinery
Corliss &
Poppet Valve
Engines**

*If interested write
for bulletins.*

The Vilter machine is the acknowledged Standard by which all others are compared.

MATCH YOUR REFRIGERATION REQUIREMENT with Low-Cost VILTER EQUIPMENT



VMC Compressors—Latest type multi-cylinder compressors, with 4, 6 or 8 cylinders, for Freon or ammonia. Completely balanced, VMC's require no expensive foundation. Compact, space saving. Many other advantages.

The Vilter PakIcer—Make your own Crystalform PakIce and save money. Vertical PakIce units make from 1 to 6 tons of ice in 24 hours. Horizontal units, 10 to 30 tons. Either Crystalform or Briquettes.



Vilter Condensing Units—Compact, efficient Vilter VMC Freon condensing units are all Vilter-built for smooth operation, long-life. 4, 6 or 8-cylinder VMC models, from 25 to over 100 tons.

Vertical Compressors—Ammonia units in sizes from 4 to 100 tons each for both high pressure and booster service. Modern design Freon units from ¼ h.p. to 150 h.p. Built entirely by Vilter.



Evaporative Condensers—Money saving, water saving Vilter Evaporative Condensers can be installed indoors or out. Corrosion and weather resistant. For Freon or ammonia, from 10 to 260 tons.

Shell and Tube Condensers—Use these to achieve highest efficiency on refrigerant condensing, glycol, brine or water cooling. Special Vilter design in tube spacing results in higher heat transfer.



See your Vilter representative or distributor for more information about these Vilter products, or Vilter Air Conditioners, Quick Freezing Systems, Pipe Coils and Refrigeration Piping, Valves and fittings. You're ahead with refrigeration by Vilter.

WRITE FOR CATALOGS

... on any of these Vilter products. Longer life and less trouble save you money with Vilter.

Vilter®

REFRIGERATION and AIR CONDITIONING

THE VILTER MANUFACTURING COMPANY
MILWAUKEE 7, WISCONSIN

Ammonia and Freon Compressors • Pak Icers • Evaporative and Shell and Tube Condensers • Pipe Coils • Valves and Fittings

Advertisement from 1954

[Footnote: During the 1950s and later, Vilter was represented in London by Alfred Porter Ltd of Putney.]

References

What the Refrigerating Machine Companies have Contributed, Refrigerating Engineering, December, 1934

Proclaiming the Truth, ASHRAE Centennial Publication, 1995