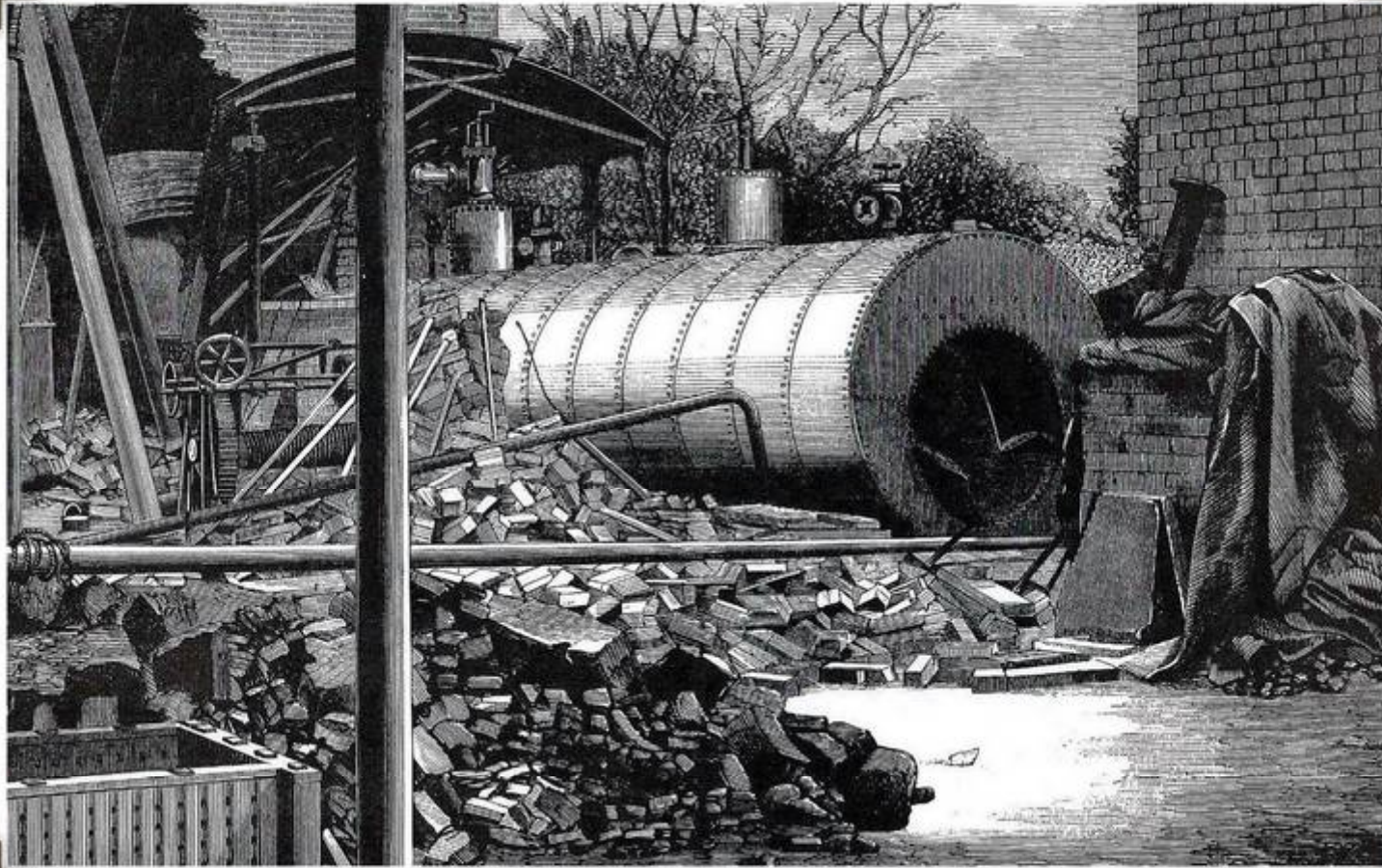


CIBSE HERITAGE GROUP

CALENDAR FOR 2016



The first Summer Meeting of the Institution of Heating & Ventilating Engineers at Stourbridge in 1899



*Boiler explosion at Messrs Bass & Co's
Brewery, Burton on Trent, 1866*

January 2016

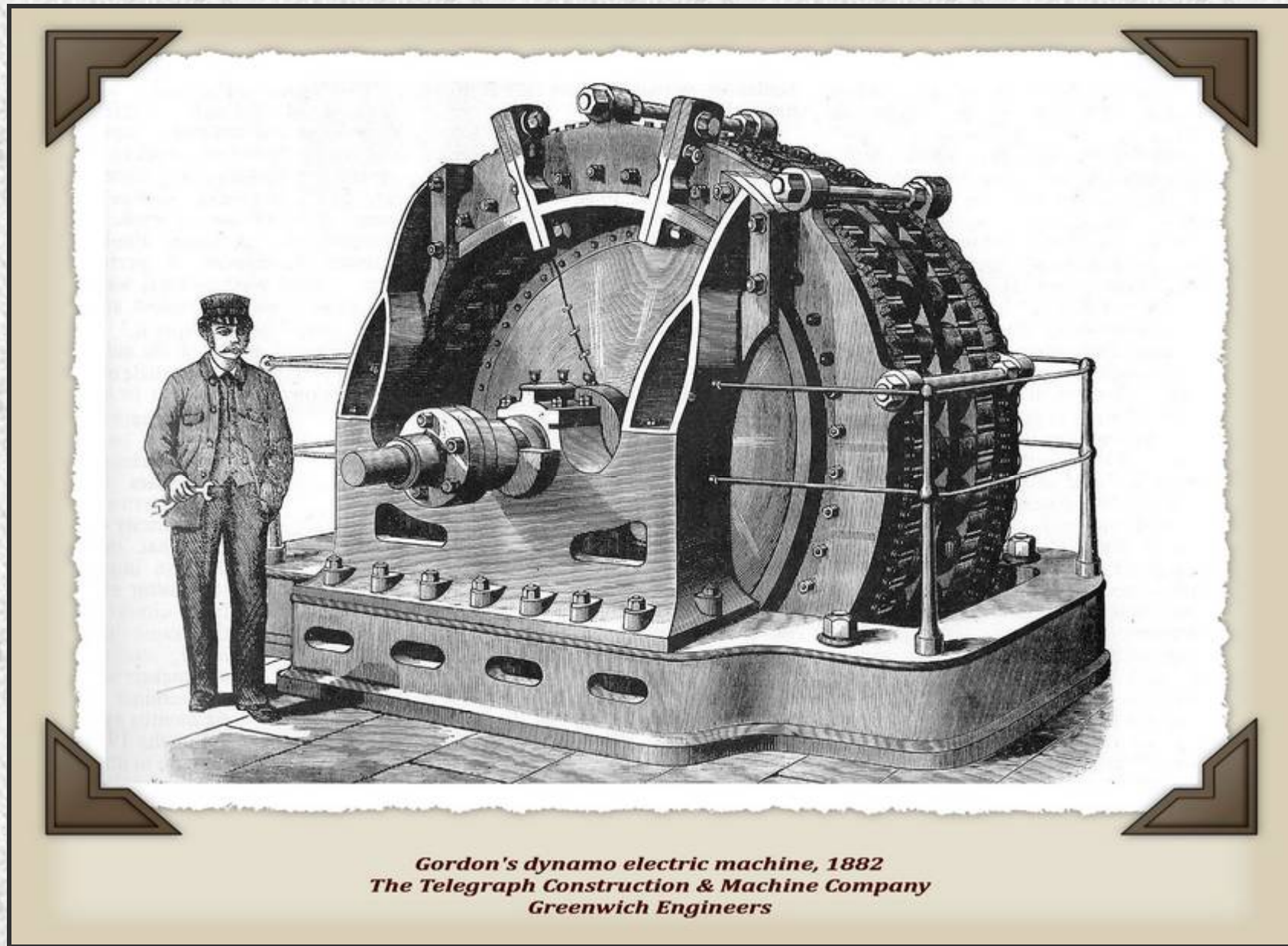
Mon	Tues	Wed	Thurs	Fri	Sat	Sun
				1	2	3
4	5	6	7	8	9	10
11	12	13	14	15	16	17
18	19	20	21	22	23	24
25	26	27	28	29	30	31



*Gas lighting in the Banqueting Room
The Royal Pavilion, Brighton, 1826*

February 2016

Mon	Tues	Wed	Thurs	Fri	Sat	Sun
1	2	3	4	5	6	7
8	9	10	11	12	13	14
15	16	17	18	19	20	21
22	23	24	25	26	27	28
29						



*Gordon's dynamo electric machine, 1882
The Telegraph Construction & Machine Company
Greenwich Engineers*

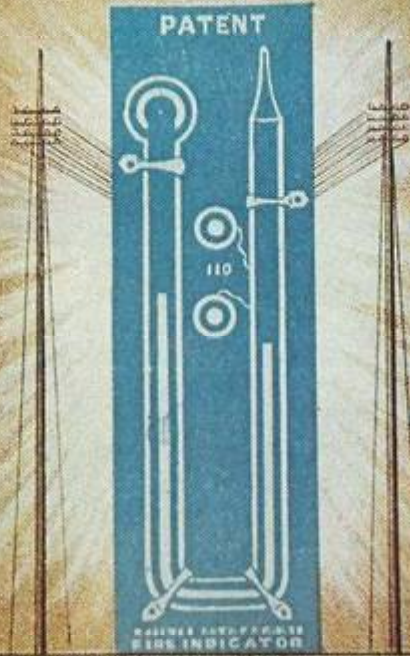
March 2016

Mon	Tues	Wed	Thurs	Fri	Sat	Sun
	1	2	3	4	5	6
7	8	9	10	11	12	13
14	15	16	17	18	19	20
21	22	23	24	25	26	27
28	29	30	31			

PEARSON'S AUTOMATIC FIRE INDICATOR



1800



100, St. Martin's Lane, W.C.

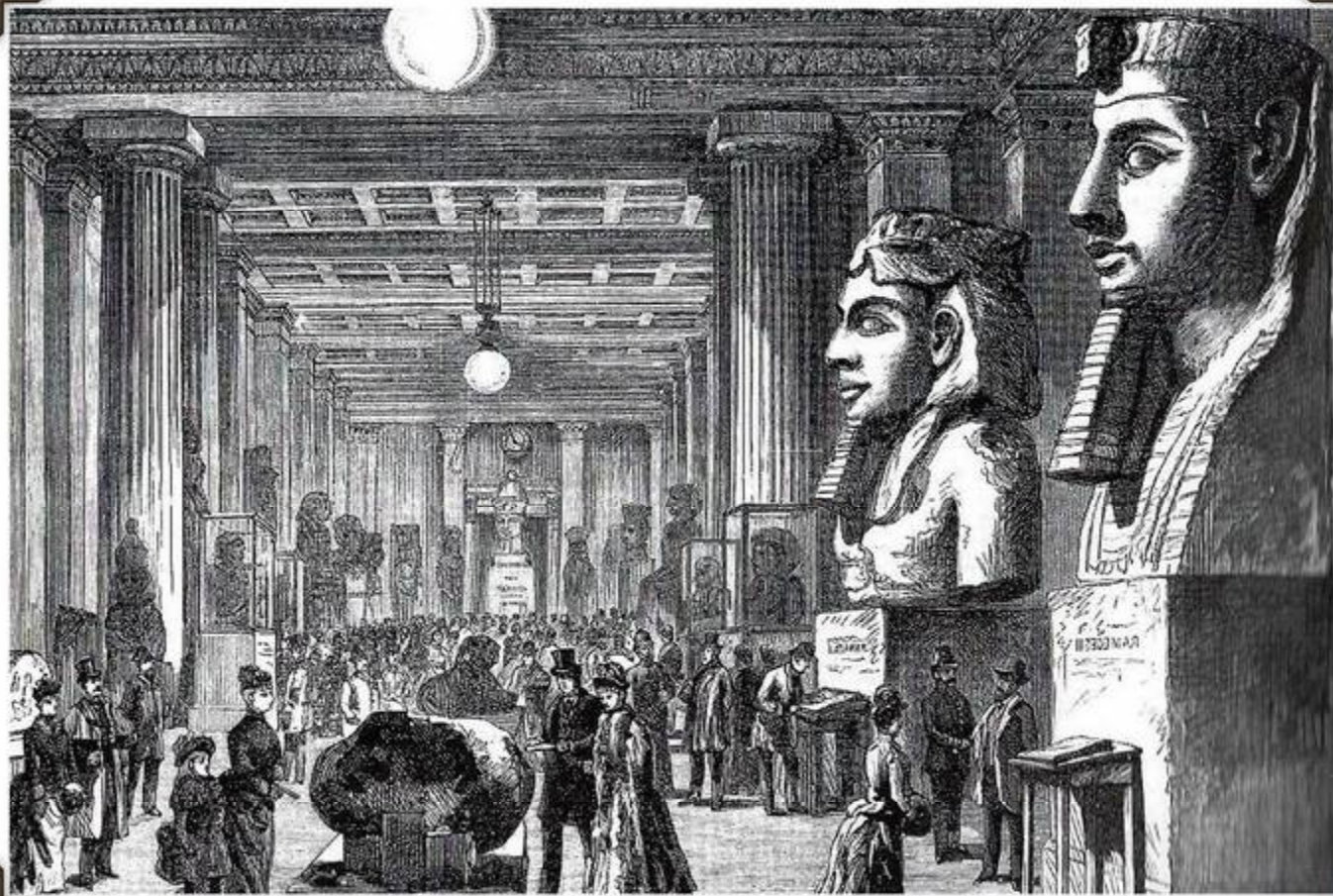


1857

Catalogue cover Automatic Fire Alarm, 1897

April 2016

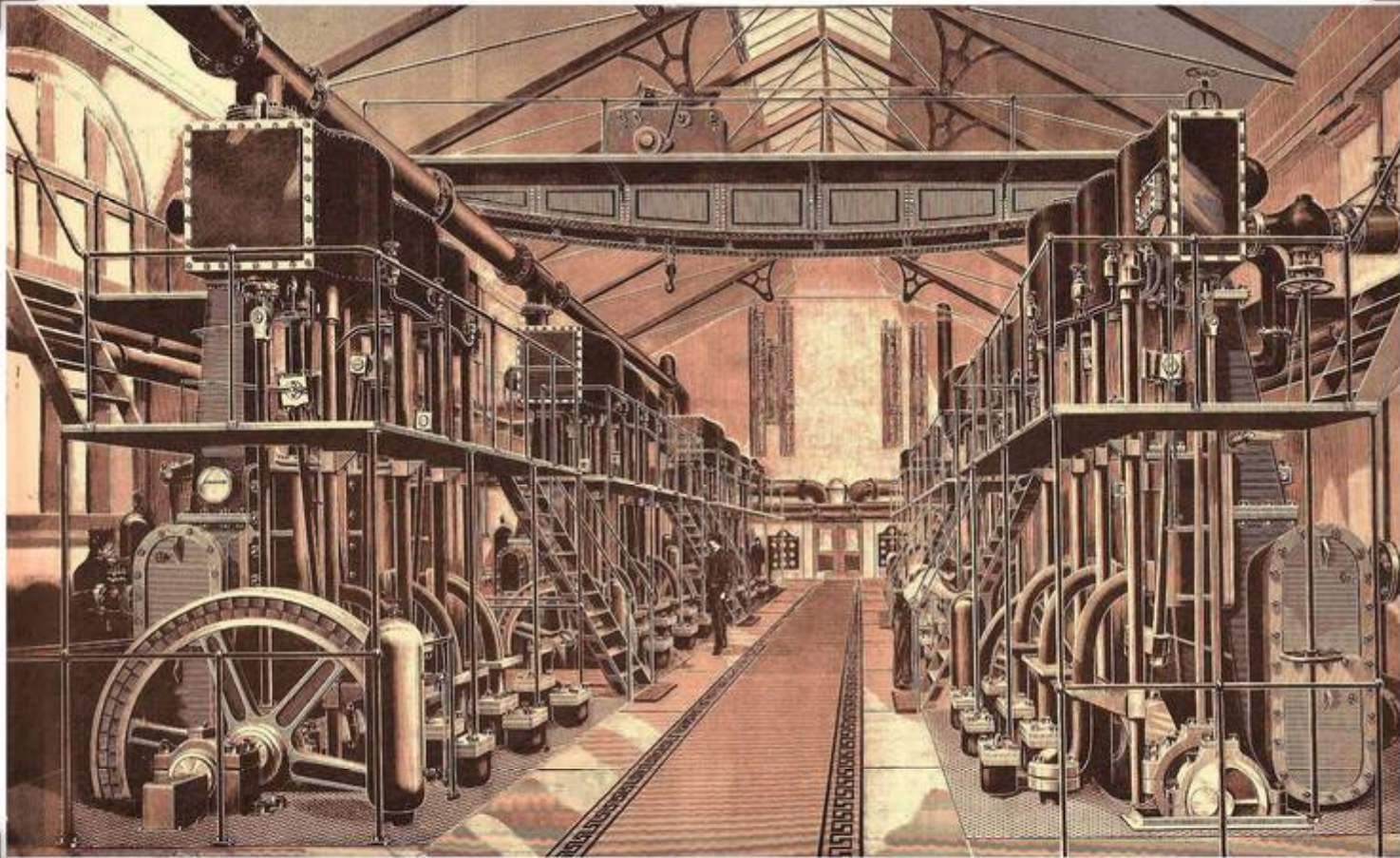
Mon	Tues	Wed	Thurs	Fri	Sat	Sun
				1	2	3
4	5	6	7	8	9	10
11	12	13	14	15	16	17
18	19	20	21	22	23	24
25	26	27	28	29	30	



*Electric lighting at the British Museum, London, 1890
Arc & incandescent lamps with steam-driven dynamos*

May 2016

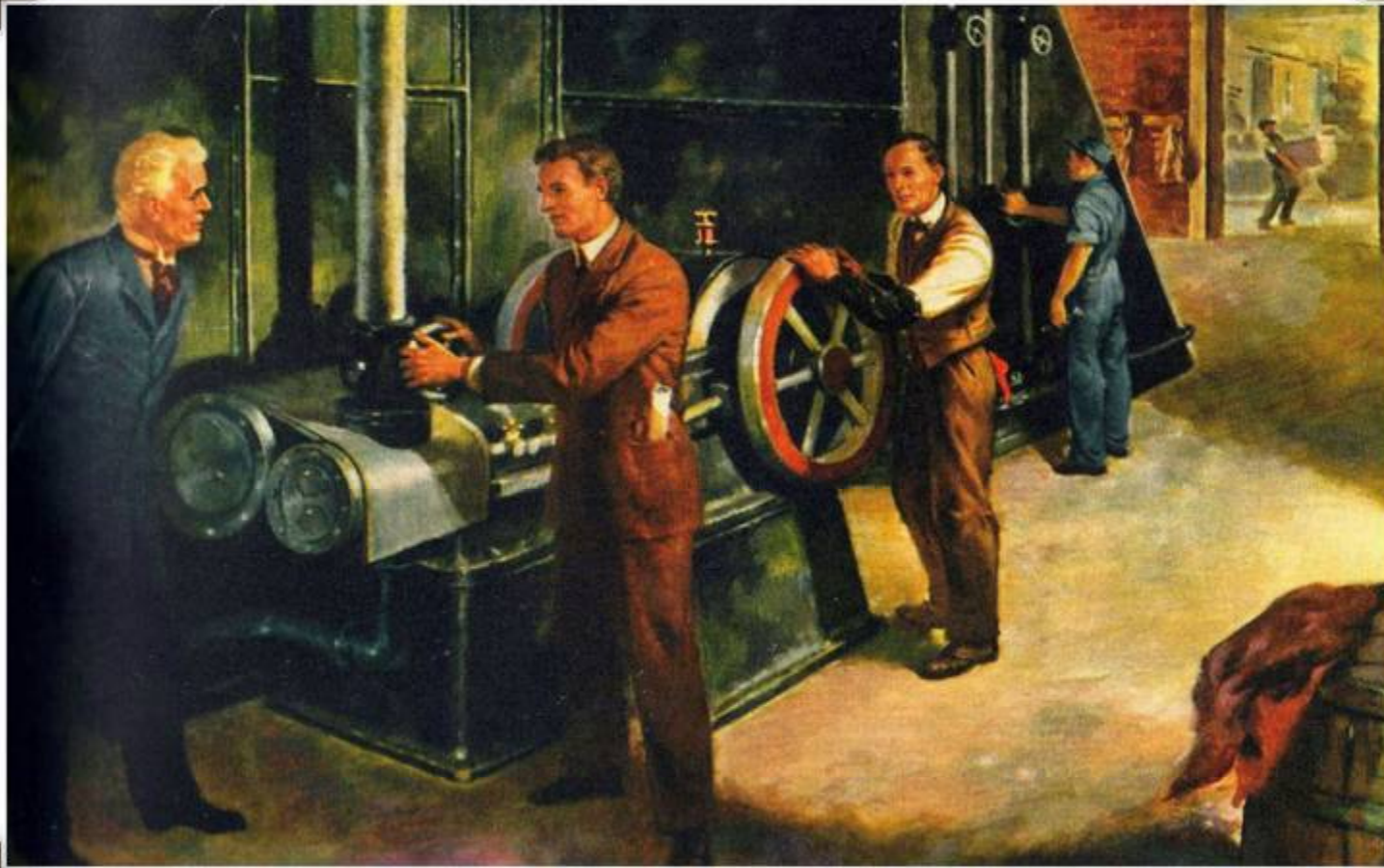
Mon	Tues	Wed	Thurs	Fri	Sat	Sun
						1
2	3	4	5	6	7	8
9	10	11	12	13	14	15
16	17	18	19	20	21	22
23	24	25	26	27	28	29
30	31					



*Engines & pumps in the Hydraulic Power Company Station
Deptford, 1893*

June 2016

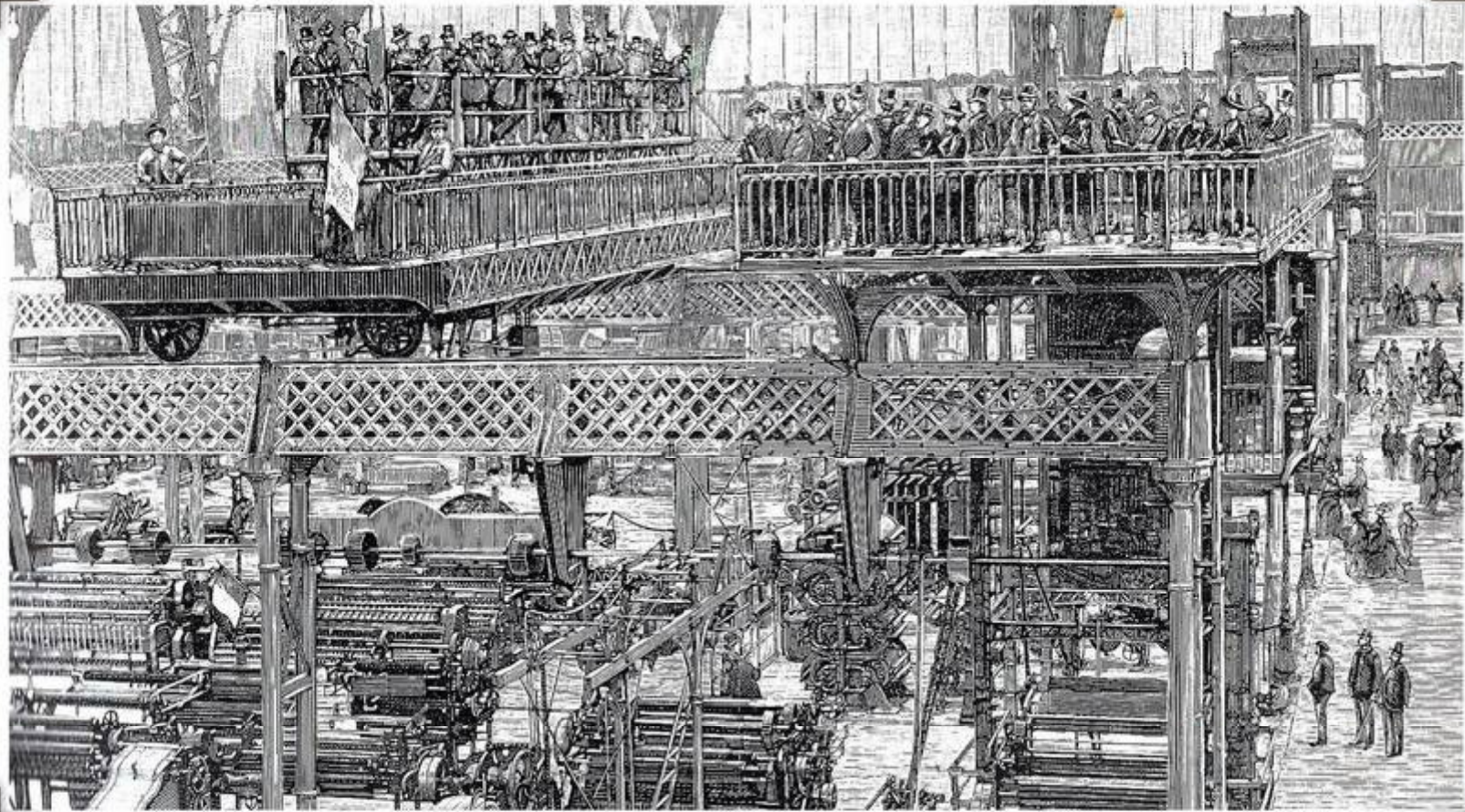
Mon	Tues	Wed	Thurs	Fri	Sat	Sun
		1	2	3	4	5
6	7	8	9	10	11	12
13	14	15	16	17	18	19
20	21	22	23	24	25	26
27	28	29	30			



Dr Willis Haviland Carrier (2nd from left) starts an early "scientifically designed" air conditioning system, Sackett & Wilhelms printing plant, Brooklyn, New York, 1902

July 2016

Mon	Tues	Wed	Thurs	Fri	Sat	Sun
				1	2	3
4	5	6	7	8	9	10
11	12	13	14	15	16	17
18	19	20	21	22	23	24
25	26	27	28	29	30	31



*Les Pontes Roulants (Travelling Gantry for moving people)
Galerie des Machines, Paris, 1889*

August 2016

Mon	Tues	Wed	Thurs	Fri	Sat	Sun
1	2	3	4	5	6	7
8	9	10	11	12	13	14
15	16	17	18	19	20	21
22	23	24	25	26	27	28
29	30	31				



*Steam boilers, Papplewick pumping station, Nottinghamshire
CIBSE visit, 2007*

September 2016

Mon	Tues	Wed	Thurs	Fri	Sat	Sun
			1	2	3	4
5	6	7	8	9	10	11
12	13	14	15	16	17	18
19	20	21	22	23	24	25
26	27	28	29	30		



*Comfort air conditioning, the Balaban & Katz "Roosevelt,"
Movie Theatre, Chicago, 1936*

October 2016

Mon	Tues	Wed	Thurs	Fri	Sat	Sun
					1	2
3	4	5	6	7	8	9
10	11	12	13	14	15	16
17	18	19	20	21	22	23
24	25	26	27	28	29	30
31						



*Sheet metal shop, painting by John Niro
National Building Museum, Washington, DC, 1988*

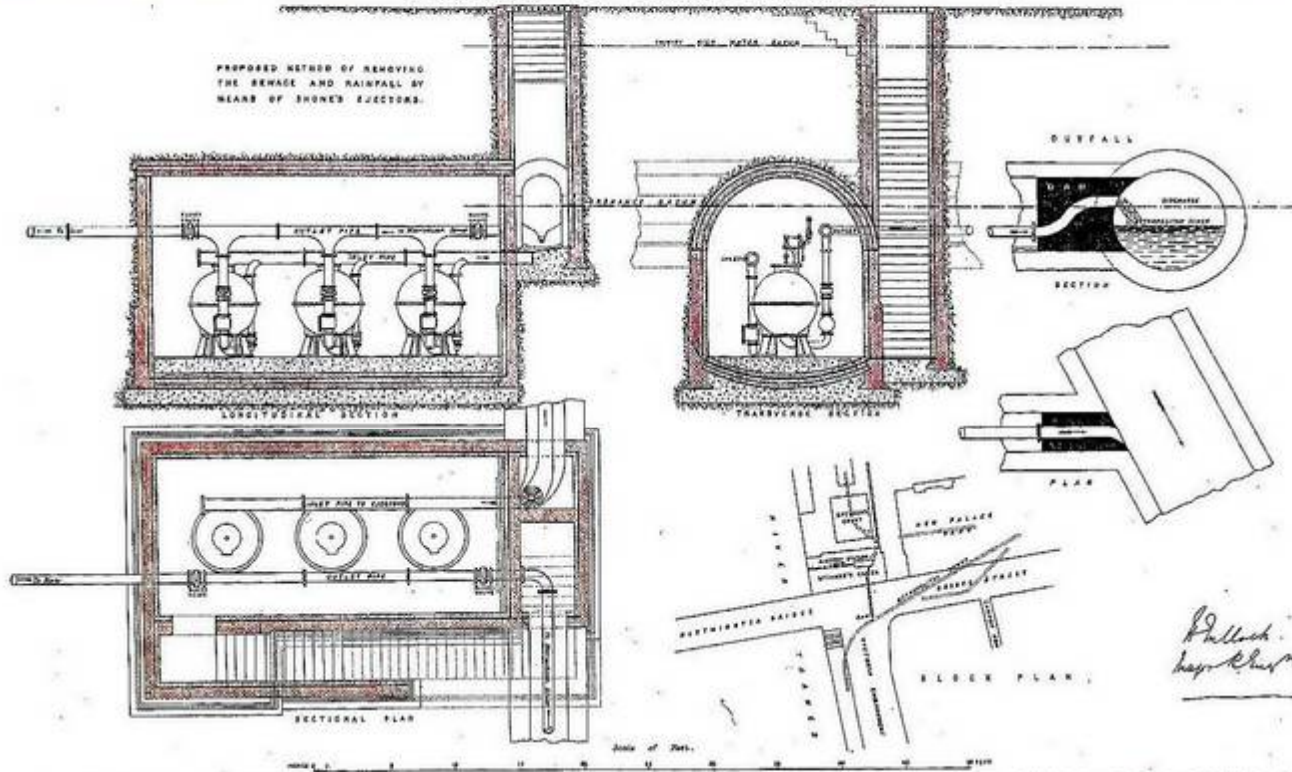
November 2016

Mon	Tues	Wed	Thurs	Fri	Sat	Sun
	1	2	3	4	5	6
7	8	9	10	11	12	13
14	15	16	17	18	19	20
21	22	23	24	25	26	27
28	29	30				

HOUSES OF PARLIAMENT.

G. 45. REPORT, SELECT COMMITTEE ON THE VENTILATION OF THE HOUSES

PROPOSED METHOD OF REMOVING
THE SEWAGE AND RAINFALL BY
MEANS OF SHONE'S EJECTORS.



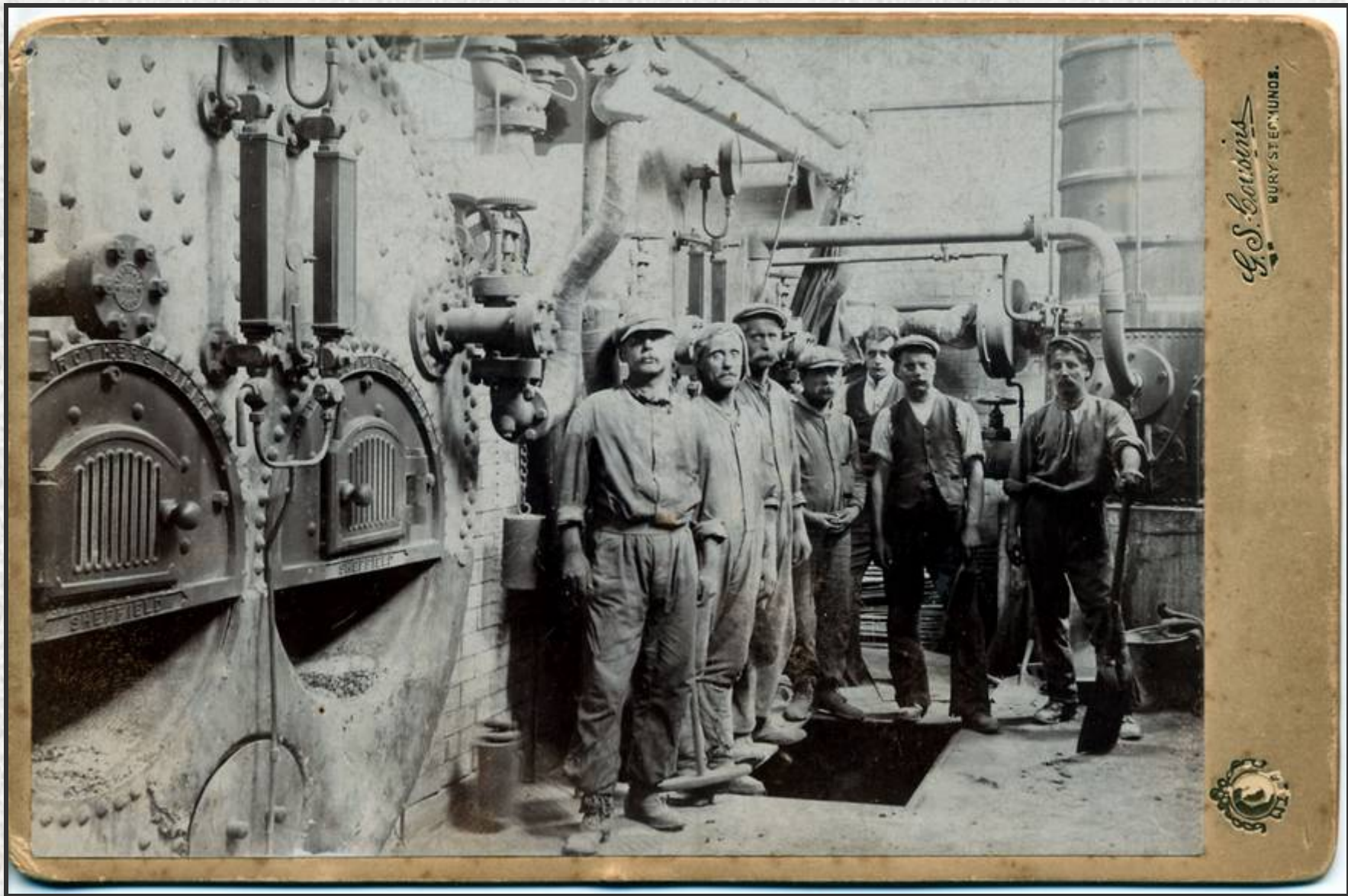
*Isaac Shone's sewage ejectors for improving drainage
Houses of Parliament, London, 1887*

December 2016

Mon	Tues	Wed	Thurs	Fri	Sat	Sun
			1	2	3	4
5	6	7	8	9	10	11
12	13	14	15	16	17	18
19	20	21	22	23	24	25
26	27	28	29	30	31	



*Assembling "Torrid Zone" furnaces
The Lennox Furnace Co, Marshalltown, Iowa, 1930's*



Lancashire boilers at Bury St Edmunds Power Station



Historic England is the public body that looks after England's historic environment. It champions historic places, helping people to understand, value and care for them, now and in the future. You may sign up to our Newsletter to keep up to date with our latest news, advice and listings.

www.historicengland.org.uk

The Building Services and Emergency Planning Team provide advice on how historic property owners, managers and custodians can reuse, replace or refurbish their building services and improve energy efficiency and control energy use as well as advise on fire engineering and emergency planning.

Historic England and the Building Services and Emergency Planning Team are proud to be sponsors of the CIBSE Heritage Group 2016 Calendar.

CIBSE HERITAGE GROUP

The CIBSE Heritage Group is made up of a number of like minded professionals, many retired, who have spent a lifetime in building services and bring that experience to bear in discovering, analysing and recording the history of this essential aspect of the world we live in. It is the oldest CIBSE Special Interest Group (1973).

The heritage website is a substantial resource for historians but also for working architects, designers and engineers amongst many others, particularly those involved in historic projects including building services with which they may not be familiar. By using the website and/or by reference to the Heritage Group members, answers may be found to questions which could otherwise add considerably to the time and thus cost of the project.

www.hevac-heritage.org