

# BOILERS

and  
Heating  
Appliances



HARTLEY & SUGDEN  
LIMITED  
HALIFAX



*Telegrams*  
"BOILERS HALIFAX"

*Telephone*  
HALIFAX 3238 (3 lines)

*Established 1867*

# Hartley & Sugden

LIMITED

## "White Rose" Boiler Works HALIFAX

ENGLAND

*Contractors to the*

Admiralty, War Office, Home Office, H.M.  
Office of Works, Prison Commissioners,  
Crown Agents for Colonies, India Office,  
London County Council, Ministry of Health,  
etc.

69 GOLD & SILVER MEDALS AWARDED

*London Office and Showroom*  
Sundial House, 357, Euston Road, N.W.1.

*Telephones: Museum 0214, 2 Lines.*  
*Telegrams: "Hartleysug" Eusroad, London.*

*District Representatives*

MR. R. WILKINS  
135 PARRSWOOD ROAD SOUTH  
DIDSBURY PARK  
MANCHESTER

*Telephone Didsbury 1450*

MR. W. T. LORD  
40 FRANCES ROAD  
HANDSWORTH  
BIRMINGHAM

*Telephone Birmingham Northern 2805*

MR. H. F. JOHNSON  
268 KING'S PARK AVENUE  
KING'S PARK  
CATHCART GLASGOW

*Telephone Glasgow Langside 59*

MR. G. SUTTON  
5 GLOUCESTER ROW  
CLIFTON  
BRISTOL

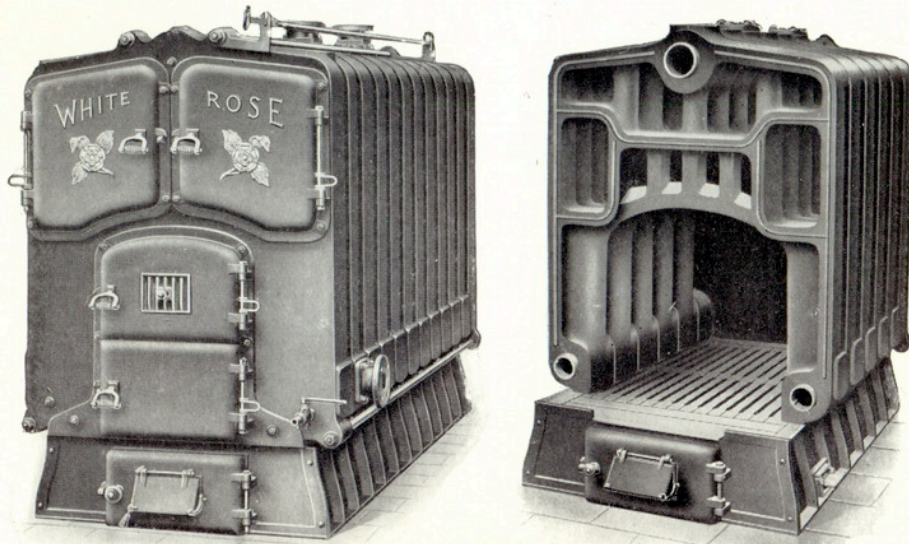
*Telephone 9920*

All Orders and Enquiries to be addressed to Halifax  
All previous Catalogues are hereby cancelled

1930

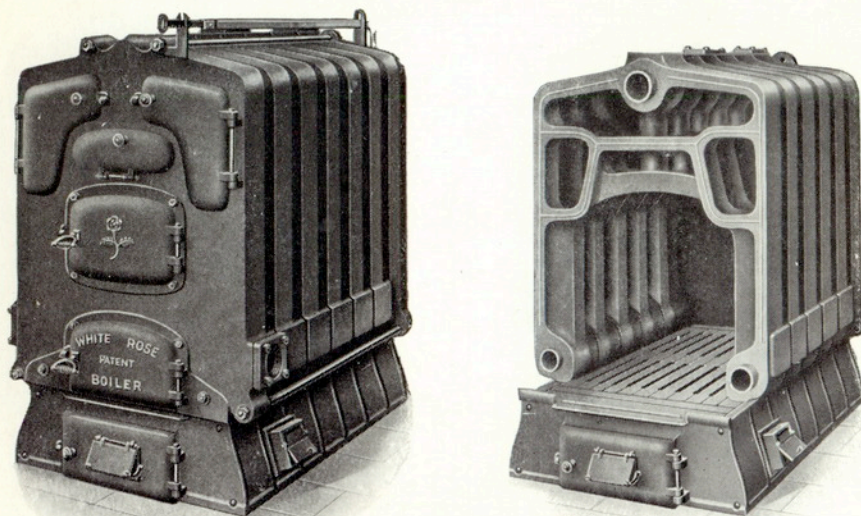
**“WHITE ROSE”  
CAST-IRON SECTIONAL BOILER**

SERIES A1



**“WHITE ROSE”  
CAST-IRON SECTIONAL BOILER**

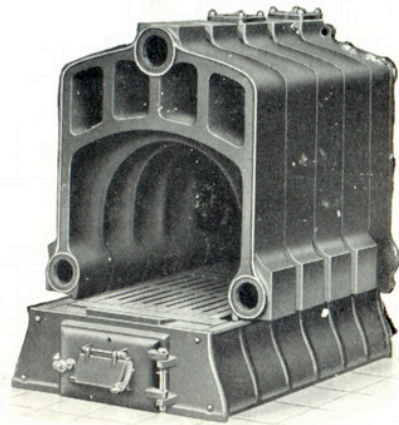
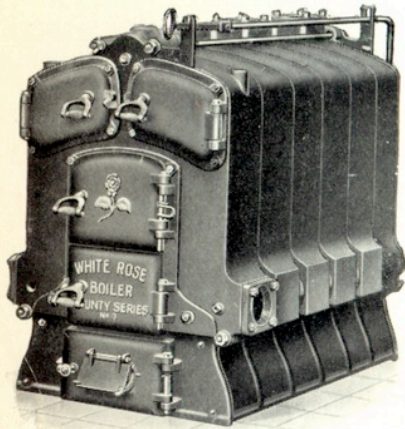
SERIES B2





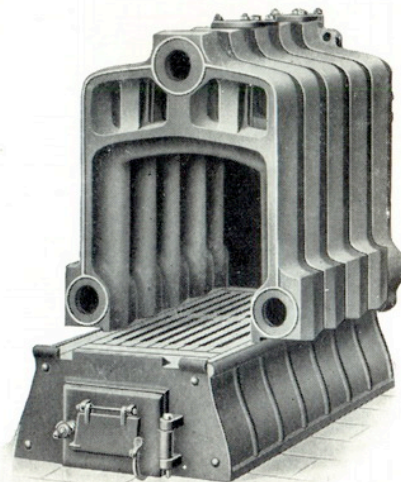
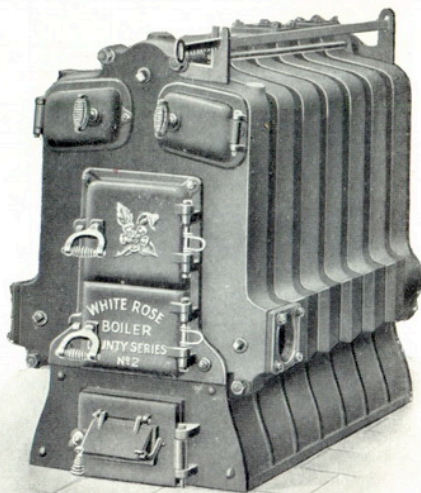
**“WHITE ROSE”  
CAST-IRON SECTIONAL BOILER**

COUNTY SERIES No. 3



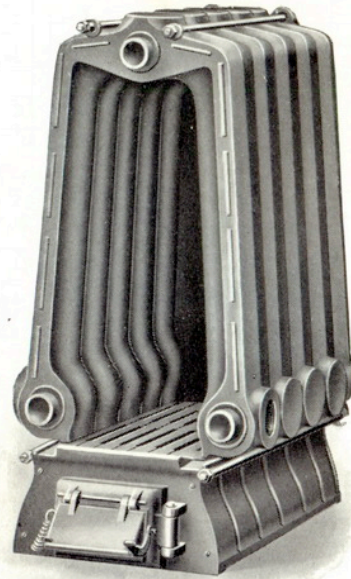
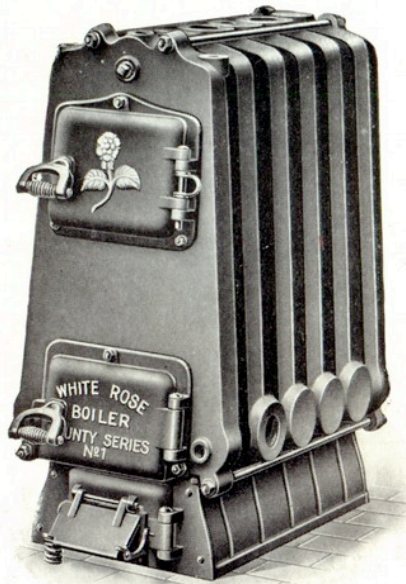
**“WHITE ROSE”  
CAST-IRON SECTIONAL BOILER**

COUNTY SERIES No. 2





**“WHITE ROSE”**  
**CAST-IRON SECTIONAL BOILER**  
COUNTY SERIES No. 1



# “WHITE ROSE” Mild Steel TUDOR BOILER

THE design and appearance of the “TUDOR WHITE ROSE” Boiler differ from all other central heating boilers and have no equal. The design is neat and most attractive so that when installed in a hall or sitting-room it harmonises perfectly with its surroundings.



THE BOILER OF UNEQUALLED APPEARANCE

The boiler is of mild steel plate and tubes the same as used in high power Water Tube Boilers and of very simple construction. The bulk of the heating surface being in tubes arranged vertically, the volume of water in the boiler is small and ensures rapid heating and circulation. The flames and hot gases being in direct contact with the heating surface ensures high transmission of heat from fuel to water and economical working is assured.

Under the grate is an ashpan and this permits the removal of ashes without scattering dust about the room. The fuel capacity is large and stoking intervals are long.



**“WHITE ROSE”**  
**CAST-IRON SECTIONAL BOILER**  
**FOR LOW PRESSURE STEAM HEATING**



ELEVATION OF SERIES A1 BOILER FOR STEAM HEATING

With special wrought-steel steam drum mounted on top, which drum gives large steam space and effectually checks priming; also prevents exposure of surfaces to hot flue gases if water level falls low.

All boilers fitted with equalising pipes between drum and bottom of boiler.

# **“WHITE ROSE” CAST-IRON SECTIONAL BOILER**

## **Insulated Galvanised Square Casings**

are very neat and durable and prevent useless and wasteful radiation of heat in boiler-room.

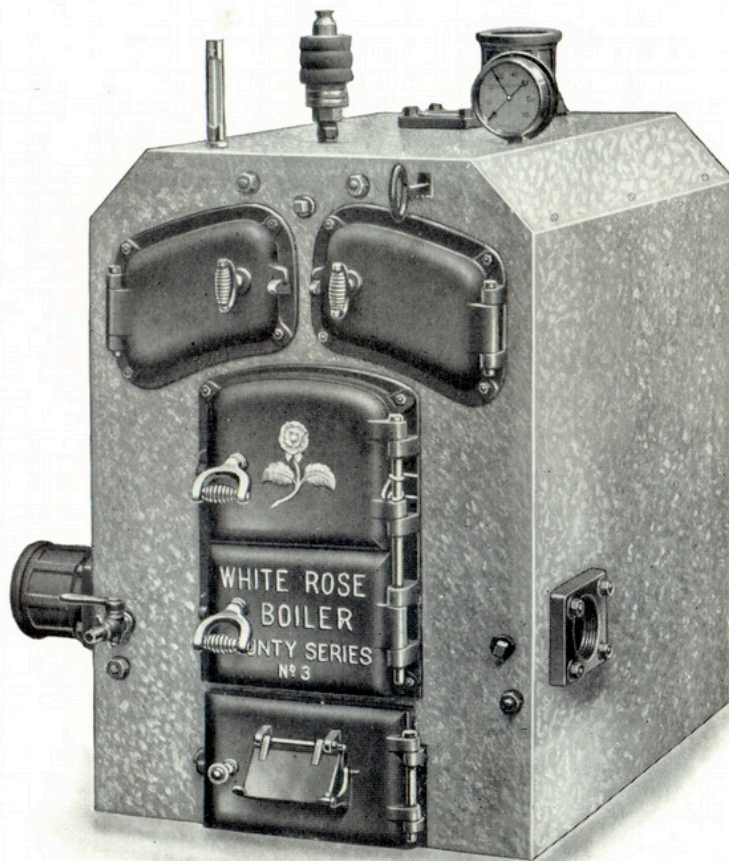


ILLUSTRATION OF COUNTY SERIES 3 BOILER

**Fixed in a few minutes by unskilled labour**



# “WHITE ROSE” CAST-IRON SECTIONAL BOILER

**Insulated Galvanised Square Casings**  
are very neat and durable and prevent useless and wasteful  
radiation of heat in boiler-room.

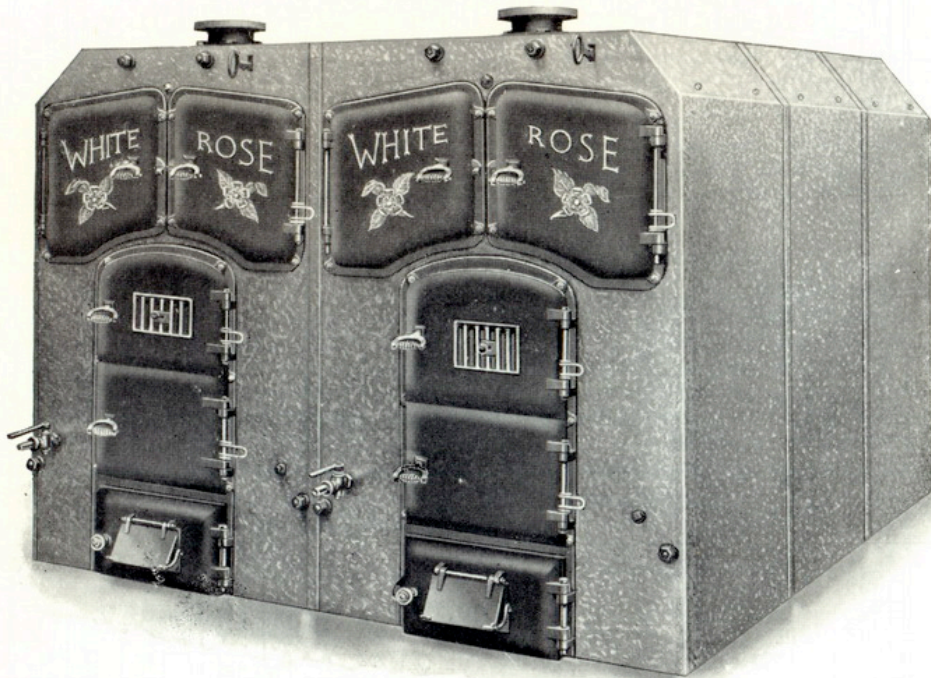


ILLUSTRATION OF TWO NO. 612 SERIES A1 BOILERS IN ONE INSULATED CASING

Boilers of all series can be made up in batteries in a similar manner.

Return pipe connections are usually placed on the sides, but when boilers are arranged in battery formation (as illustrated) the return mains can be connected on back, thus securing the utmost economy in floor space.