

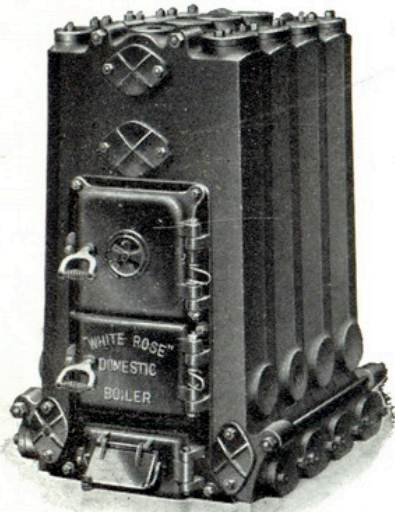
“WHITE ROSE”

CAST-IRON

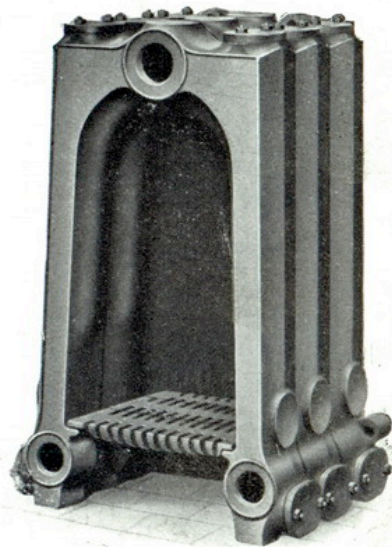
SECTIONAL DOMESTIC BOILER

For Hot Water Tap Supply

THIS boiler has very wide Waterways carried beneath grate to ground level, with provision for thorough and easy removal of sediment deposited from hard water. The front section has eight large openings and the other sections each have four, offering access to every part of the waterways. For soft water the sections can be treated by the Bower-Barff Rustless Process and are then supplied with brass connecting nipples.



Elevation



Elevation with front section removed

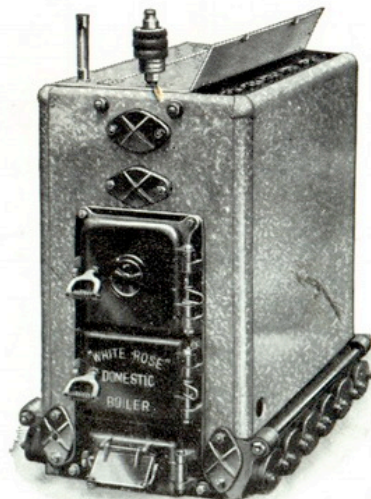
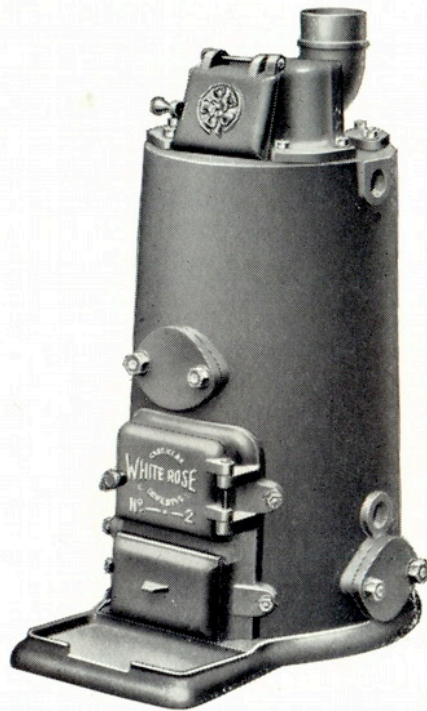


ILLUSTRATION OF THE SECTIONAL DOMESTIC BOILER FITTED WITH INSULATED GALVANISED SQUARE CASING SO ARRANGED WITH ACCESS TO HANDHOLES, FOR REMOVAL OF DEPOSIT WITHOUT DISMANTLING CASING OR BOILER SECTIONS.

“WHITE ROSE” CAST-IRON DOMESTIC BOILER

For Hot Water Tap Supply or Central Heating



High-grade Cast-iron

Compact Strong Durable

Ashpit Door can be arranged for Automatic Draught Control
when desired.

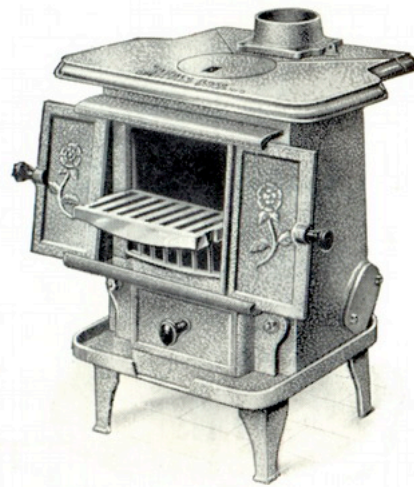
Provision is made for access to all parts of Waterways

“WHITE ROSE”
Cast-Iron
OPEN FIRE DOMESTIC BOILER

**WARMS THE KITCHEN
 AND GIVES COPIOUS HOT WATER SUPPLY**



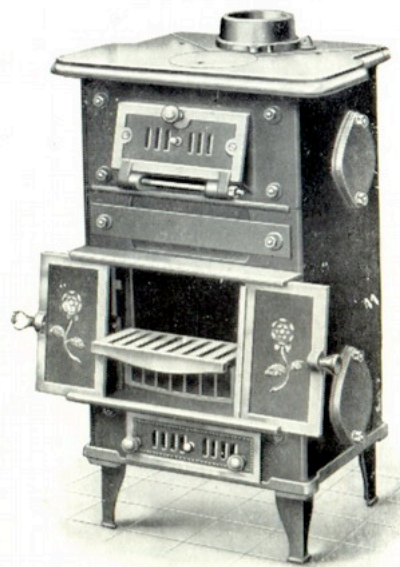
No. 0 showing doors open
 for open fire.



No. 0 showing mottled grey porcelain
 enamel finish and enamelled
 casing over boiler.



Size 1 showing closed fire.



Size 2 showing open fire.

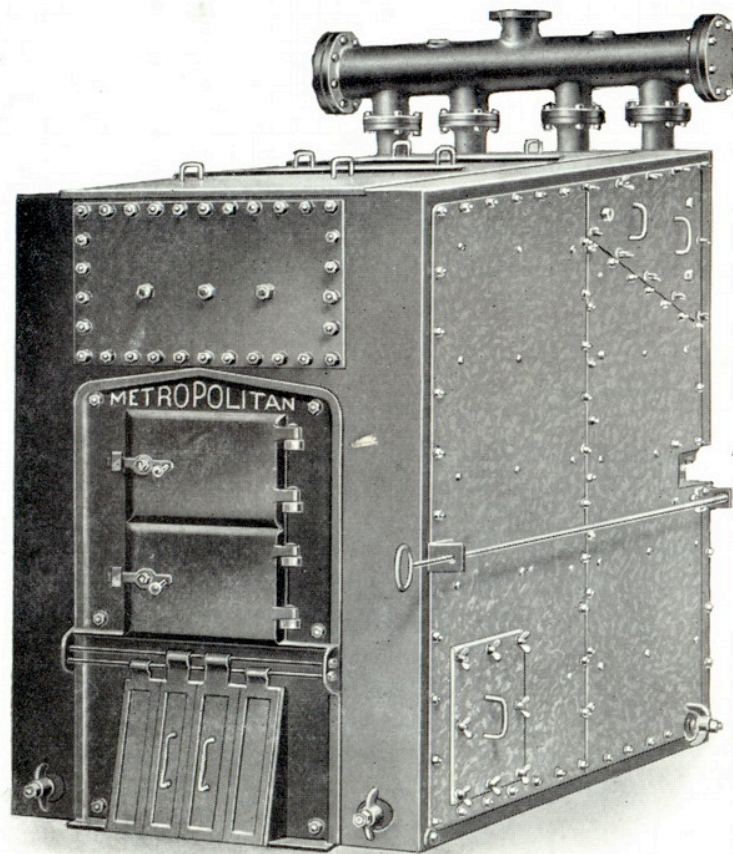
“METROPOLITAN”

Welded Mild Steel

SECTIONAL WATER-TUBE BOILER

SERIES 5

**FOR LARGE CENTRALISED HOT-WATER HEATING
PLANTS**



All “METROPOLITAN” Boilers are tested to hydraulic pressure of 100 lb. per square inch and can be tested to higher pressures when necessary.

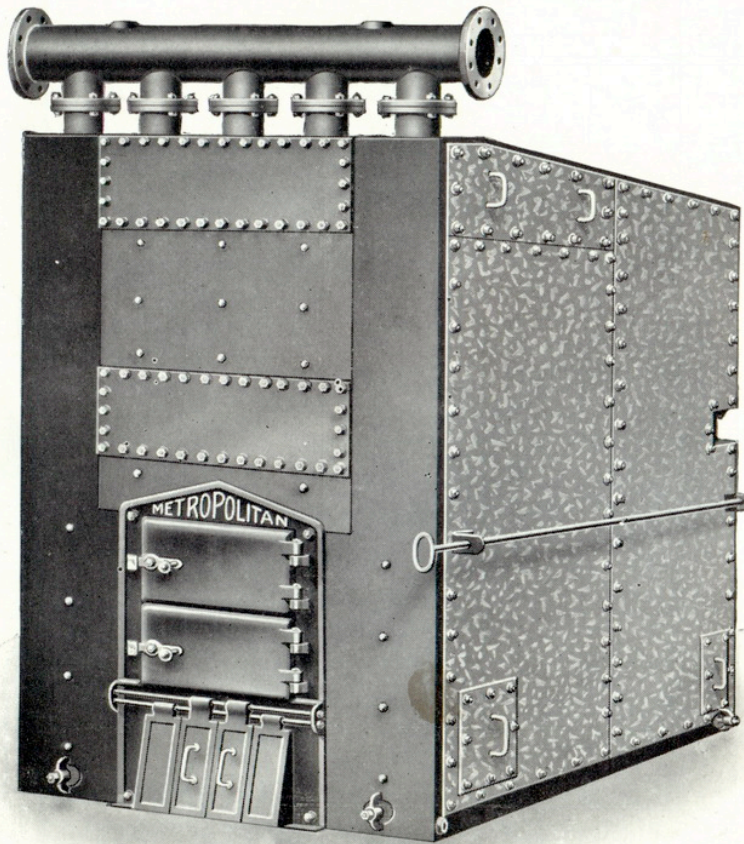
Flow header can be off back for boiler-rooms of limited height.

INDEPENDENT—NO BRICKSETTING

“METROPOLITAN”
Welded Mild Steel
SECTIONAL WATER-TUBE BOILER

For Large Centralised Hot-water Heating Plants

SERIES 6



All “METROPOLITAN” Boilers are tested to hydraulic pressure of 100 lb. per square inch and can be tested to higher pressures when necessary.

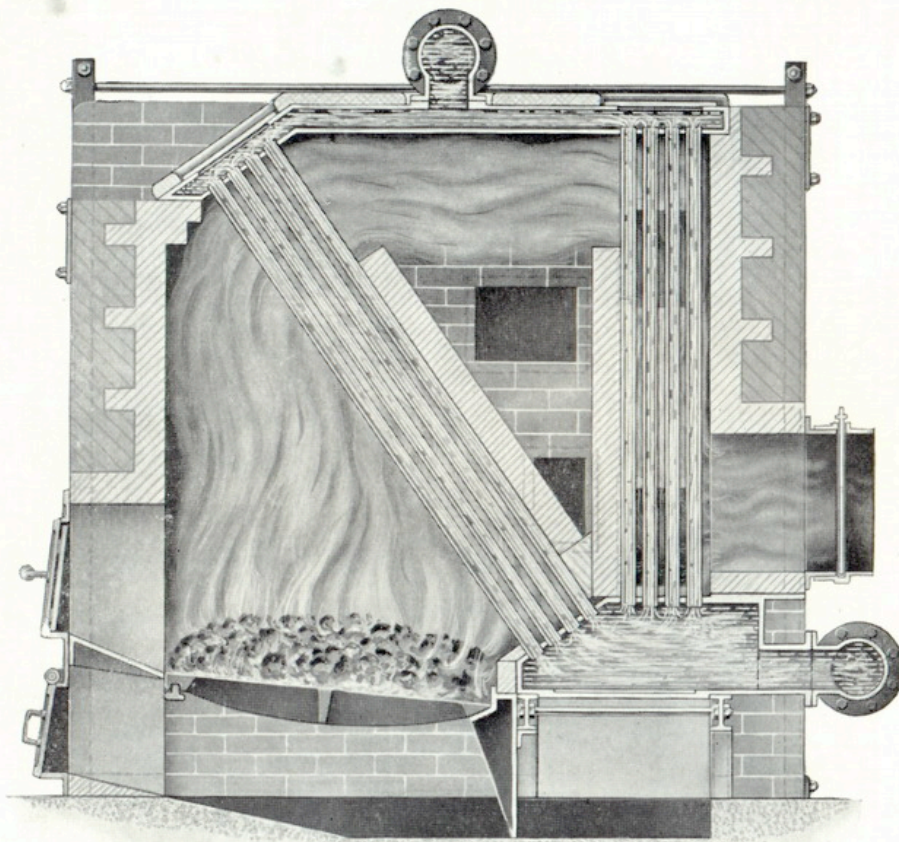
**THE LARGEST INDEPENDENT SECTIONAL BOILERS
MANUFACTURED**

“METROPOLITAN”
Welded Mild Steel
SECTIONAL WATER-TUBE BOILER

For Large Centralised Hot-water Heating Plants

Patent No. 205639

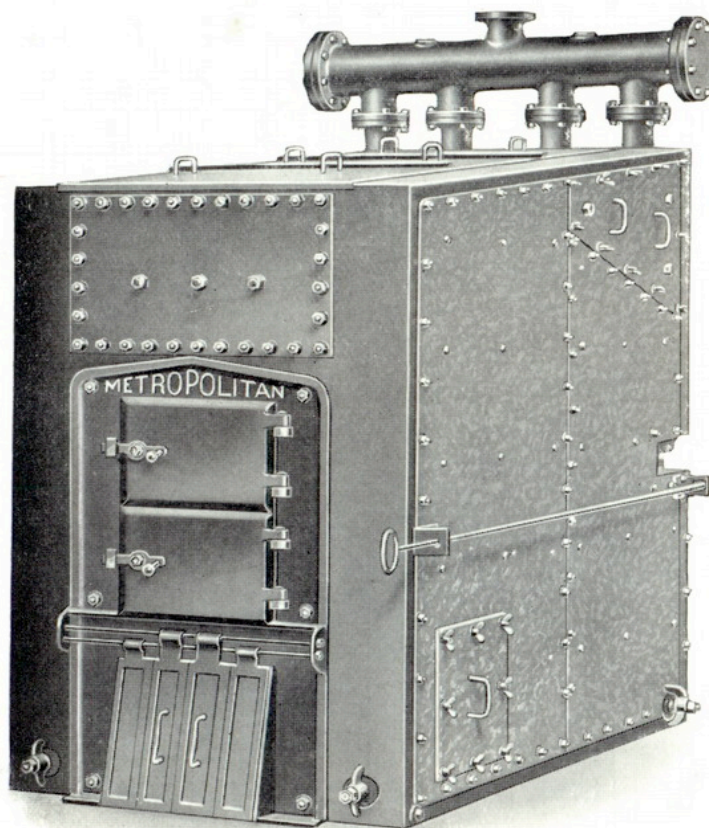
BRICKSET TYPE FOR LARGE DUTIES FROM ONE BOILER



LONGITUDINAL SECTION

“METROPOLITAN”
Welded Mild Steel
SECTIONAL WATER-TUBE BOILER
FOR HOT-WATER TAP SERVICES IN LARGE
BUILDINGS

SERIES 7



All “METROPOLITAN” Boilers are tested to hydraulic pressure of 100 lb. per square inch and can be tested to higher pressures when necessary.

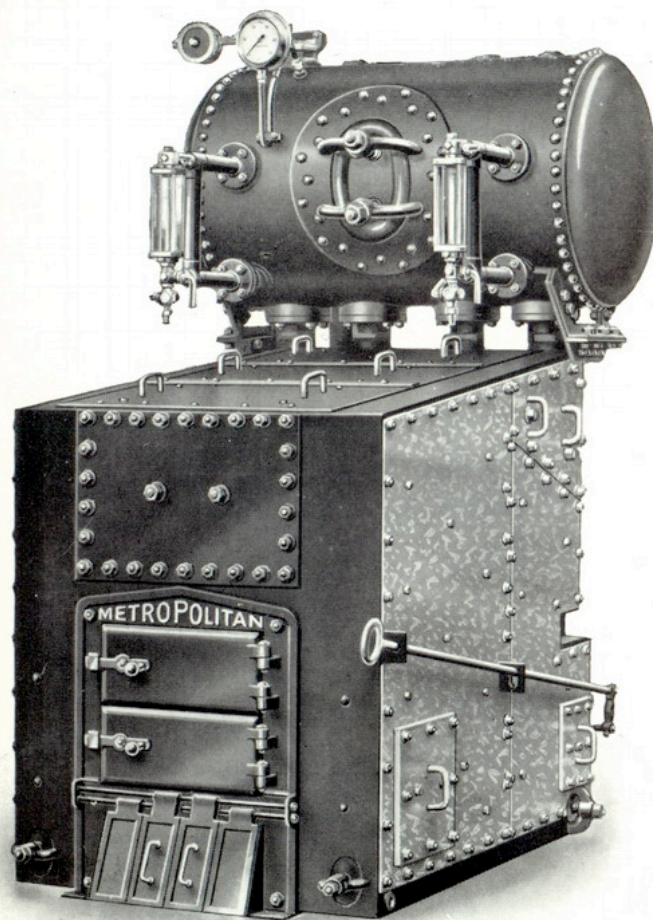
Flow header can be off back for boiler-rooms of limited height.

There is complete access for the thorough cleaning of all waterways and tubes, also for all flue and boiler surfaces exposed to fire and gases.

“METROPOLITAN”
Welded Mild Steel
SECTIONAL WATER-TUBE STEAM BOILER

SERIES 5S

For Low-pressure Steam up to 25 lb. per square inch



Height to top of drum as given on page 51. All other dimensions are same as sizes 51 to 512 on pages 38 and 39

**FOR BOILER ROOMS OF RESTRICTED HEIGHT
THE STEAM DRUM CAN BE MADE OVAL**