

“SAVILE”
Welded Mild Steel Domestic Boiler
MODEL 1
For Domestic Hot Water Supply

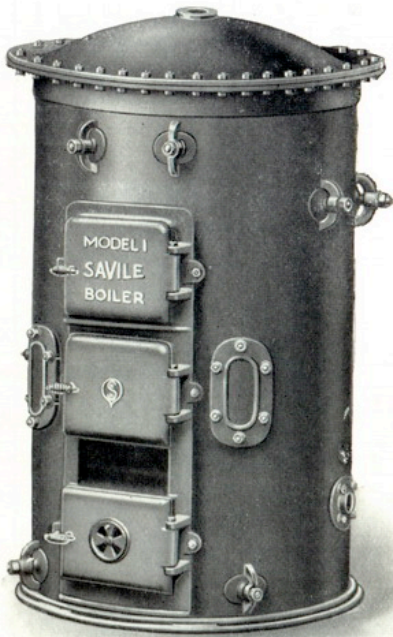
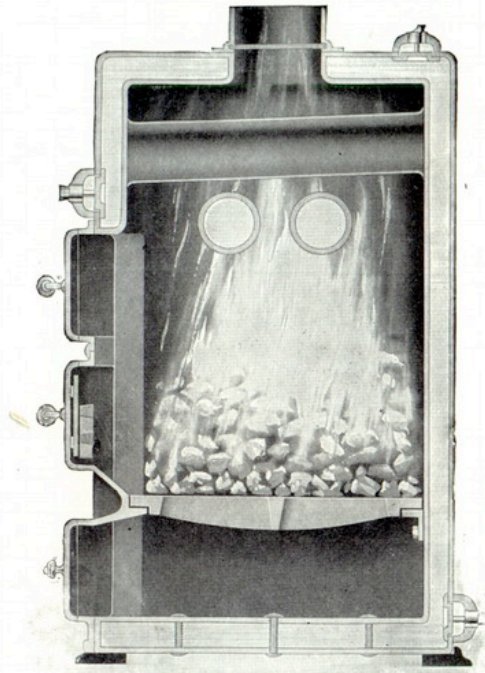
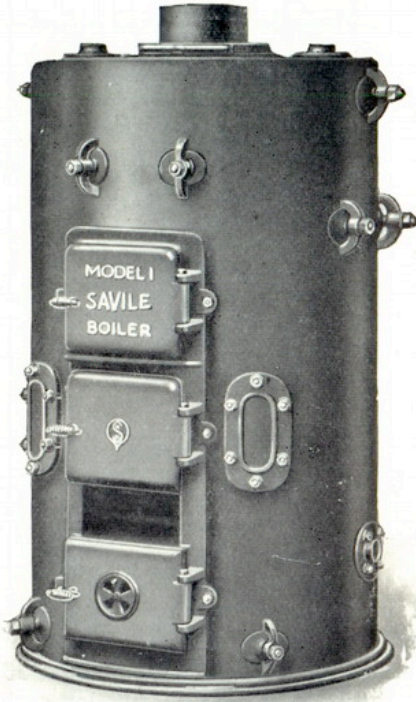


Illustration of Boiler with bolted top.

WITH CROSS TUBES IN FIREBOX
WATERWAY BOTTOM AND FLUE
THROUGH CENTRE OF CROWN

For hard water, mudholes offer access to every part for removal of deposit.

SUITABLE FOR HEAVY PRESSURES

Designed to supply large quantities of hot water for baths, public institutions, hotels, flats, mansions, canteens, offices, and central supply for municipal housing schemes, etc.

Return pipe connections 10 in. floor to centre unless ordered otherwise.

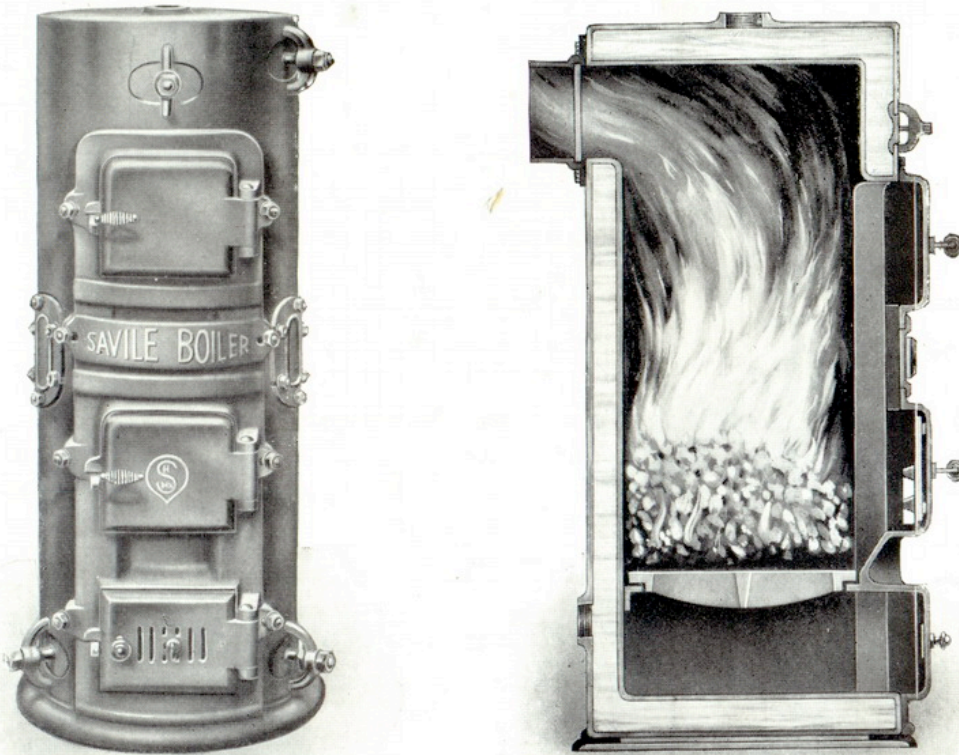
“SAVILE”

Welded Mild Steel Domestic Boiler

MODEL 2

For Domestic Hot Water Supply

WITHOUT CROSS TUBES AND WITH FLUE AT BACK



Waterway below and under firebars.

For hard water, mudholes offer access to every part for removal of deposit.

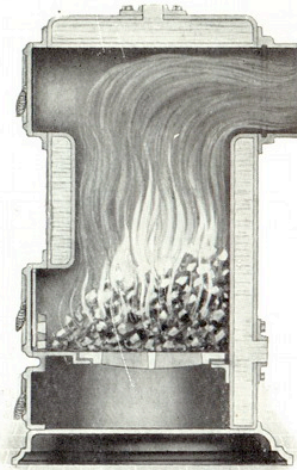
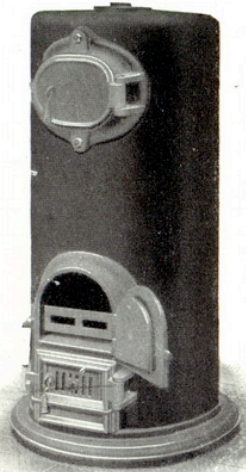
Designed to supply hot water for baths, public institutions, hotels, flats, mansions, canteens, offices, etc.

Return pipe connections 10 in. floor to centre unless ordered otherwise.

“LUNE”
Welded Mild Steel
INDEPENDENT BOILER

For Central Heating or Domestic Hot Water Supply

With Waterway carried below Fire Bars

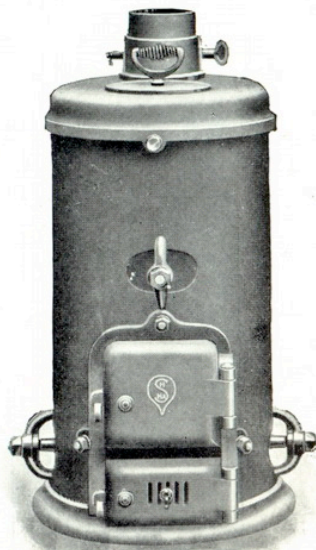


“SAVILE”

Welded Mild Steel Domestic Boiler

MODEL 3

For Small Domestic Hot Water Supply Installations

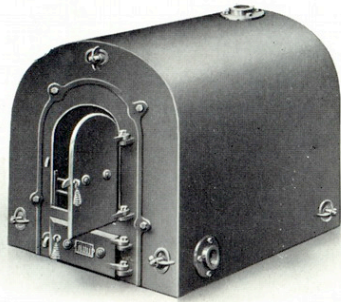


“MANOR” Welded Mild Steel DOMESTIC BOILER

For Domestic Hot Water Supply

Suitable for installations where height is restricted

With Waterway, 6 in. wide, extended below level of Grate Bars and up back.

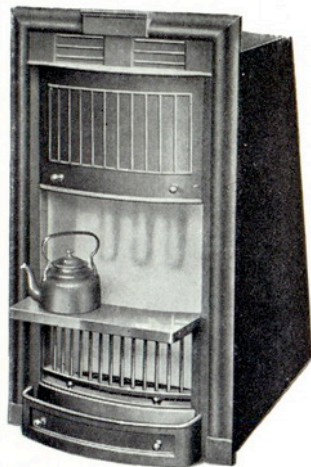


“GRIFFIN” BOILER

A unique grate fitted with a powerful wrought-iron boiler, with corrugated surfaces for heating water for domestic purposes, or heating radiators in hall or bedrooms.

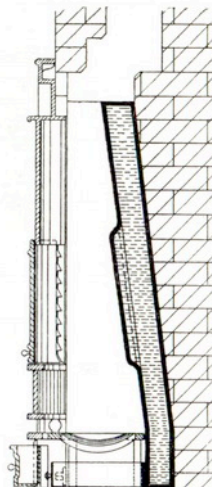
The grate front is of superior design and finish, and can be fixed in reception-room, hall, or kitchen, with tile sides, without offending the eye of the most critical. A larger boiler can be supplied fitted to the same size grate front, if required, to heat radiators in addition to domestic supply. The stove has a good toasting fire, with a kettle, trivet, and flat-iron stand. The fire can be regulated at will, as an open slow combustion grate, giving a reasonable supply of warm water, or with the canopy drawn, when extra supply of hot water is necessary.

This boiler is not suitable for direct draw off in districts where the water is very hard, because when built in chimney-breast is difficult of access. Our “Indirect” Cylinders, as pages 98 to 101, are most suitable for indirect heating in such districts.



OPEN FIRE

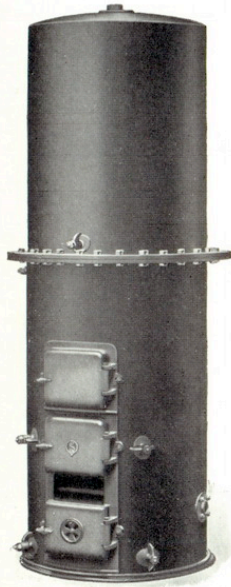
Sliding Blower raised, giving a cheerful slow-combustion sitting-room fire, which will provide a reasonable supply of hot water.



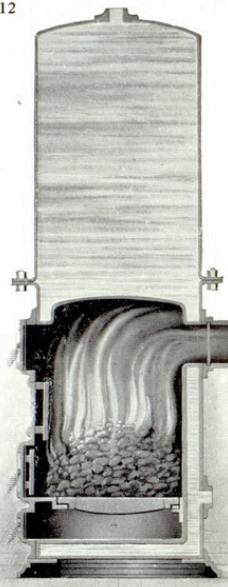
SECTIONAL DRAWING
Showing method of fixing in
chimney breast.

The "DUPLEX"
HOT WATER SUPPLY APPARATUS
A Welded Mild Steel Independent Boiler and Storage Cylinder
Combined

PATENT No. 11113/12



Elevation of Boilers 7 to 19



Section of Boilers 7 to 14

The "DUPLEX"
HOT WATER SUPPLY APPARATUS
A Cast-iron Boiler and Galvanised Sheet Steel Storage Cylinder
Combined

PATENT No. 11113/12

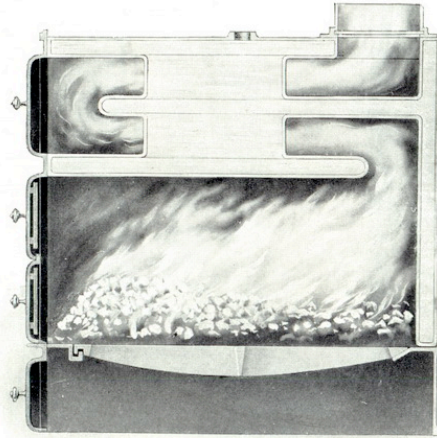


BOILER AND CYLINDER WITHOUT CASING

“MUNICIPAL” Welded Mild Steel INDEPENDENT BOILER

For Heating by Low Pressure Hot Water

MADE from best boiler plates. Design based on lengthy manufacturing experience, and construction permits high efficiency in operation, combined with simplicity in stoking and cleaning. The waterway connecting tubes between flues make it possible to efficiently stay the waterways forming the flues, where the static head is high.



“OVAL DROMANA” Welded Mild Steel INDEPENDENT BOILER

For Central Heating by Hot Water

MADE from best boiler plates. Designed to supply the demand for an independent boiler of high efficiency to withstand heavy head pressure. Waterway carried under grate to allow of return connections being low down or fixed underneath boiler.

