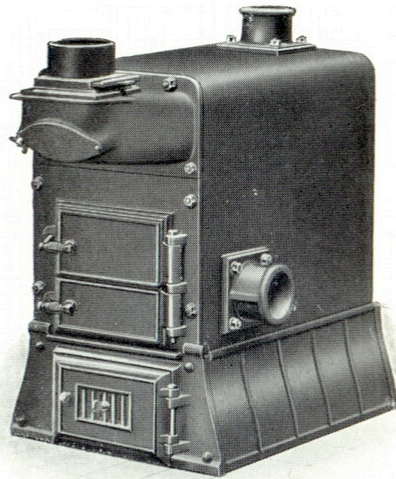
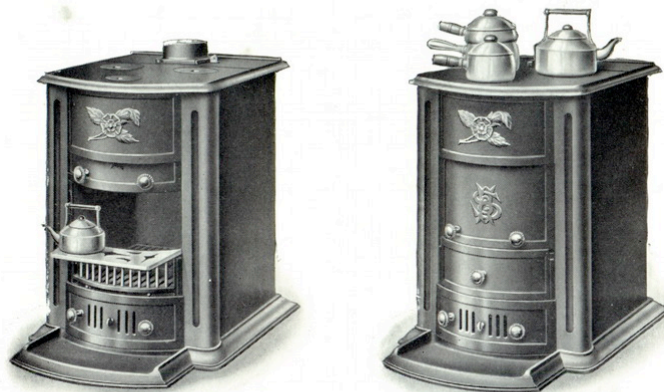


**“CHATSWORTH”**  
Welded Mild Steel  
**INDEPENDENT BOILER**  
For Central Heating by Hot Water



**“RURAL SCHOOL”**  
Welded Mild Steel Boiler

**A**n independent boiler particularly suited for country schools, barracks, hospital and railway station blocks, and for domestic heating. It is of neat appearance, possesses large open fire easily convertible to closed fire for banking up and rapid heating, also has effective provision for pan boiling on fire, heating food, etc., on hot plate.



OPEN FIRE

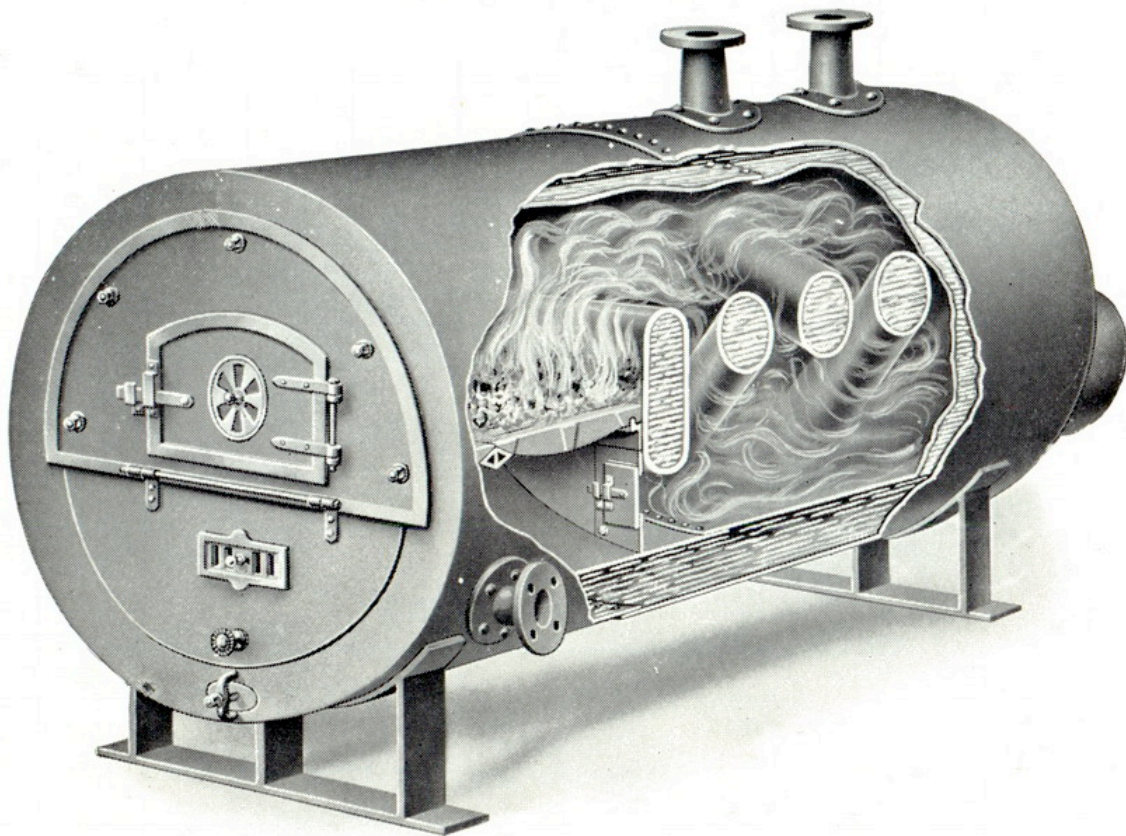
CLOSED FIRE

# **“CORNISH-TRENTHAM”**

**Welded and Riveted Mild Steel  
INDEPENDENT BOILER**

**For Central Heating by Low-Pressure Hot Water**

**Suitable for resisting heavy pressure**

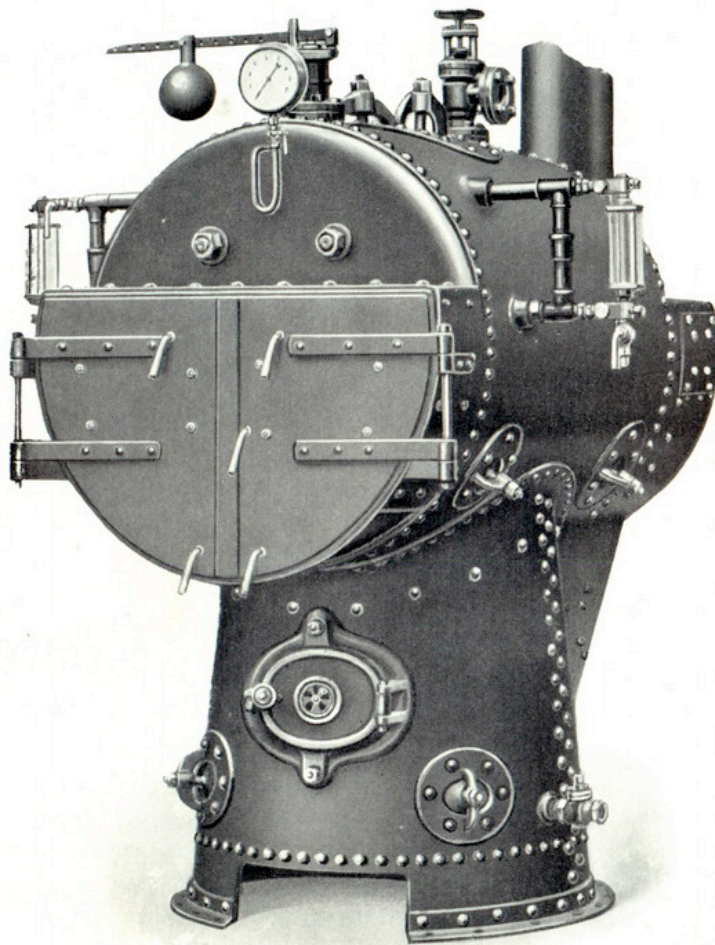




# **“HALIFAX”**

## **Riveted High-Class Multitubular STEAM BOILER**

Patent applied for No. 16261/1930

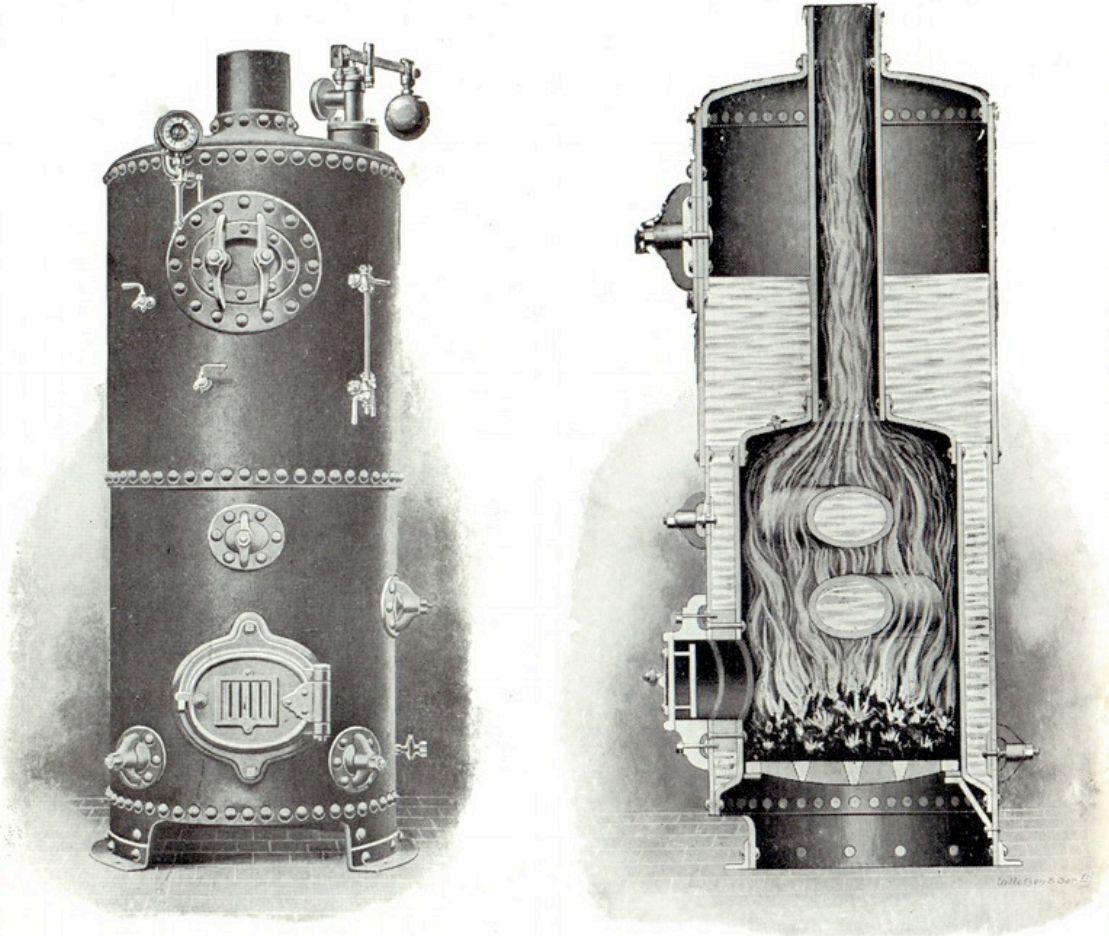


The “HALIFAX” Boiler has a great advantage in height when compared with other boilers of similar evaporation and is therefore particularly suitable for land and marine use in boiler-rooms of restricted dimensions. It is more economical than any boiler on the market and its durability is unequalled.

**THE BEST BOILER MANUFACTURED**

MILD STEEL RIVETED  
VERTICAL STEAM BOILER

With Cross Tubes in Fire Box



Can be supplied for higher pressures.

Constructed to pass Board of Trade requirements.

We also manufacture boilers with vertical fire tubes,  
price and specification will be sent against inquiry.



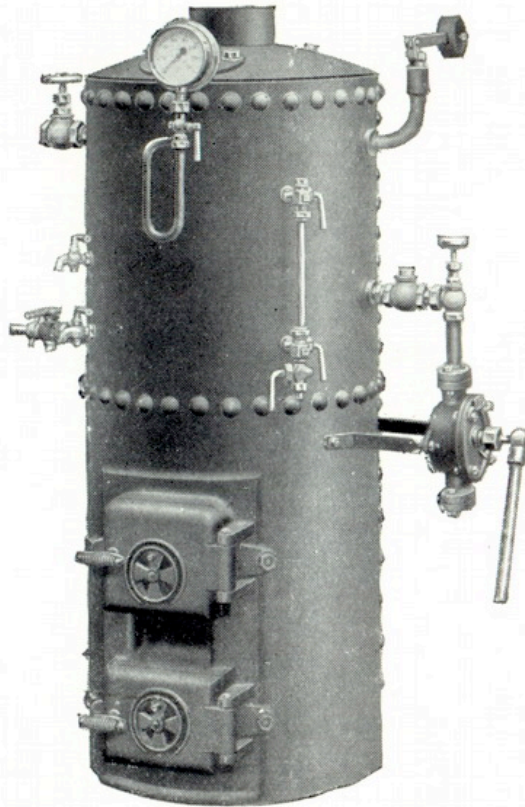
# **“DAIRY”**

## **Riveted Mild Steel High Pressure STEAM BOILER**

**For Dairy and Other Purposes where a Small Amount of Steam  
is Required**

Large Numbers in Use at Dairies and Farms for Sterilising  
and Cleansing Utensils and for Boiling Cattle Food, etc.

**Tested to  
100 lb.  
Hydraulic  
Pressure**



**For 50 lb.  
Working  
Pressure**

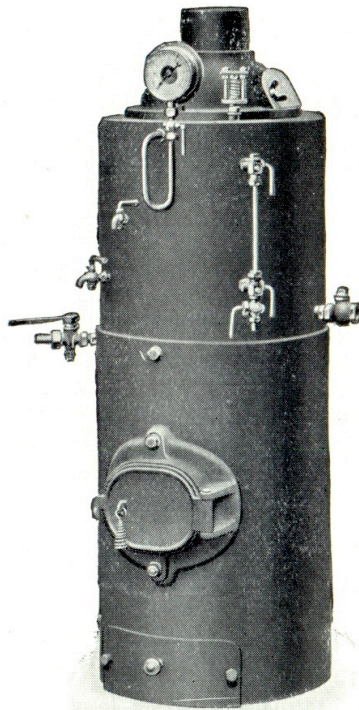
Including Mountings and Pump as illustrated, and one Mudhole Cover.

**“DAIRY”**  
**Welded Mild Steel Low Pressure**  
**STEAM BOILER**

**For Dairy and Other Purposes where a Small Amount of Steam  
is Required**

Large Numbers in Use at Dairies and Farms for Sterilising  
and Cleansing Utensils and for Boiling Cattle Food, etc.

**Tested to  
50 lb.  
Hydraulic  
Pressure**

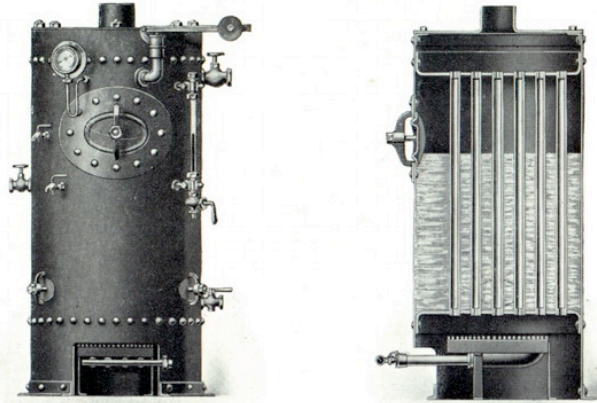


**For 25 lb.  
Working  
Pressure**

# GAS FIRED RIVETED MULTITUBULAR STEAM BOILER

**For 80 lb. Working Pressure**

A high class steel boiler with vertical COPPER fire tubes. Copper tubes are essential for gas firing, as steel tubes have very short life.

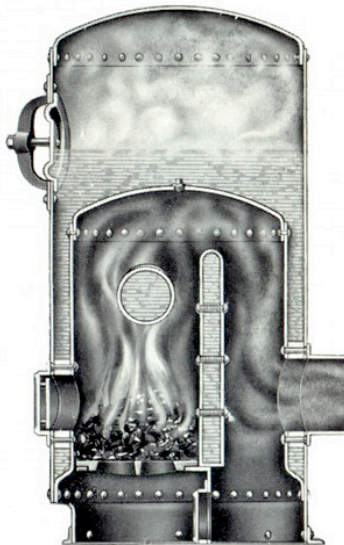


# “RESTAURANT” STEAM BOILER

**With Waterway Bridge Welded in Firebox**

Working Pressure 25 lb. Tested to 50 lb. Hydraulic Pressure

FOR COOKING  
IN HOTELS  
RESTAURANTS  
CANTEENS  
CAFÉS etc.



LOW HEIGHT  
FLUE NEAR  
GROUND  
LARGE STEAM  
SPACE  
MOST  
EFFICIENT