



BOILERS
RADIATORS
CALORIFIERS



HARTLEY & SUGDEN LTD
HALIFAX

1951

ARCHITECT'S DEPT
No. _____
rec'd. 19 SEP 1956
Replied to _____
Filed by _____

HARTLEY & SUGDEN LTD

Established 1867

WHITE ROSE BOILER WORKS

HALIFAX

ENGLAND

Telephone Halifax 3238 (3 lines)
Telegrams BOILERS HALIFAX

*All Orders and Inquiries to be addressed to
Halifax*



Contractors to

The Admiralty, War Office, Home Office, HM Office
of Works, Prison Commissioners, Crown Agents
for Colonies, India Office, London County Council,
Ministry of Health, Air Ministry, etc

All previous catalogues are hereby cancelled

London Offices and Showroom

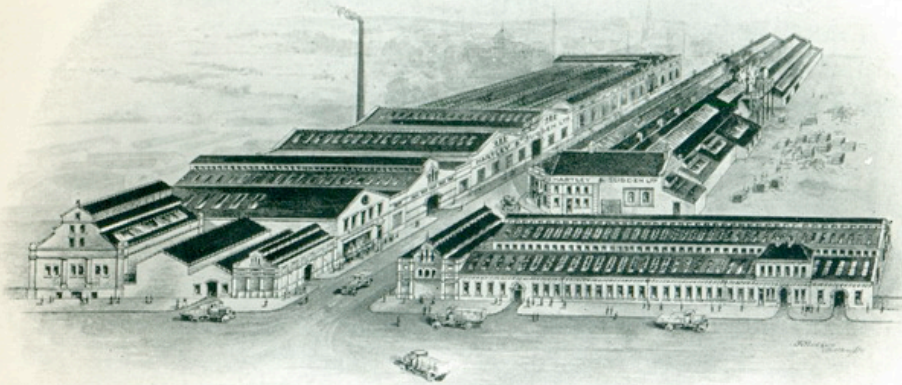
Sundial House 357 Euston Road NW 1

Telephone
Euston 4027 (2 lines)

Telegrams
HARTLEYSUG NORWEST LONDON

Representatives resident in

BIRMINGHAM BRISTOL GLASGOW



View of Works Halifax 1951

claim, the most robust and efficient on the market, and their ever-increasing popularity has necessitated considerable extension to our works.

TO meet the demand for a means of firing automatically practically any type of existing Boiler for steam, heating, and domestic supply, we now offer the "WHITE ROSE" Automatic Mechanical Underfeed Coal Stoker, a machine embodying two new and important features in stoker design.

ALL the Steam Boilers and Mountings detailed herein comply with the 1937 Factory Act operative since 1938. In recent years the British Standards Institution have published many specifications relating to Boilers, Calorifiers, and Fittings; and it will always be our aim to supply our products in accordance with these Specifications when desired.

THE experience and technical knowledge we are able to devote to the design and manufacture of our varied and extensive range of Boilers and Heating Appliances are such that the reputation for consistent quality and ready service acquired during 83 years of successful enterprise will be fully maintained in the future.

IN conclusion, we claim that this Catalogue illustrates the most comprehensive range of high-class Boilers, Calorifiers, Mechanical Stokers, and Associated Equipment ever published, and our endeavour throughout has been to make it as concise and, at the same time, as complete as possible, so that it may be of real use to all interested.

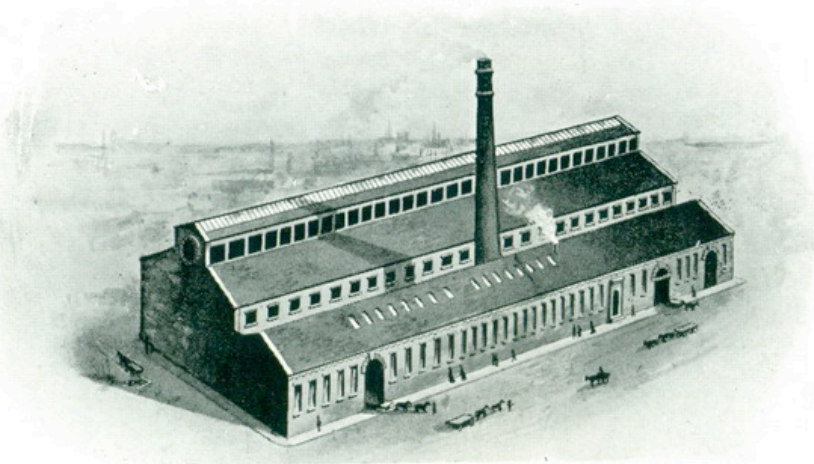
Hartley & Sugden Ltd.

Foreword

OUR business was founded in 1867 for the manufacture of Welded Boilers, and during the intervening years the demand for these has constantly increased. Whilst continually improving and modernising our designs, we have produced in recent years several Welded Boilers of outstanding merit and interest, including the "GRAVICO", "METROPOLITAN", and "OILEX". These Boilers are now regularly specified by many prominent Architects, Consulting and Heating Engineers, and Public Authorities.

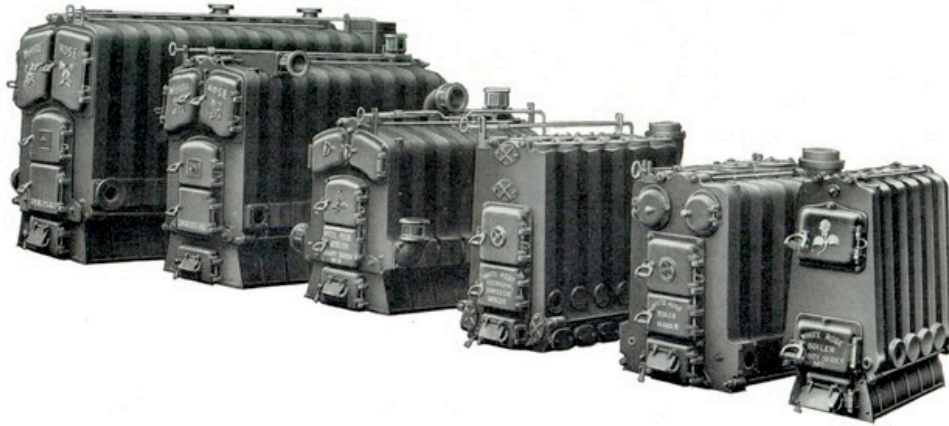
THE "GRAVICO" Gravity Feed Coke Storage Boiler was first produced in 1933 in anticipation of the development in Boiler House design and Heating Plant which has since taken place on a wide scale. Since then the "GRAVICO" Boiler has successfully met the present-day demand for an automatic coke-fired boiler to work at constant high efficiency, and at the same time to give a maximum output in the minimum of space; although incorporating every refinement of automatic fuel feed and temperature control, NO mechanical equipment is necessary for the operation.

IN 1904, we produced the "WHITE ROSE" Cast-iron Sectional Boiler for central warming, and we were the first firm to commence manufacture some years ago of a cast-iron sectional Boiler for direct domestic supply. The present series of "WHITE ROSE" Sectional Boilers for both heating and domestic supply are, we



View of Boiler Works Halifax 1870

RENOWNED FOR STRENGTH, DURABILITY AND EFFICIENCY



Series A1

Series B2

County Series 3

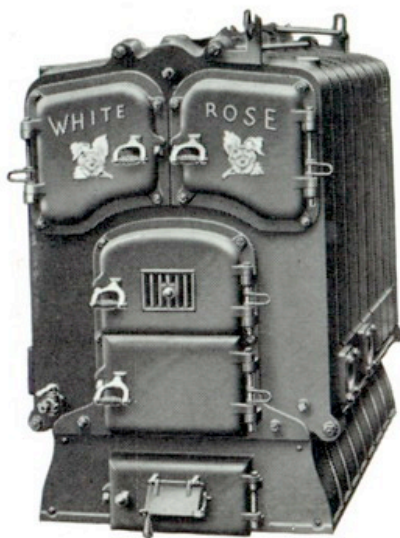
Series SD

Series H

County Series 1

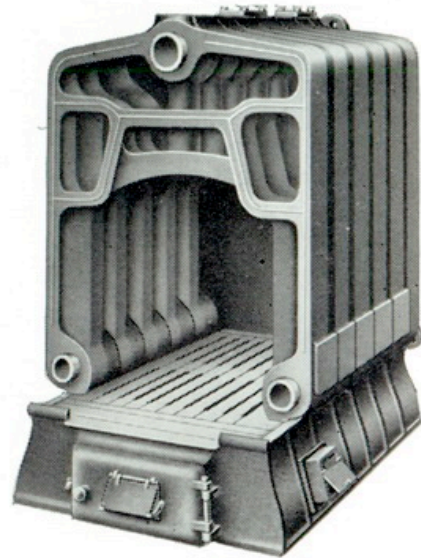
“WHITE ROSE” CAST-IRON SECTIONAL
BOILER

SERIES A1 FOR WATER



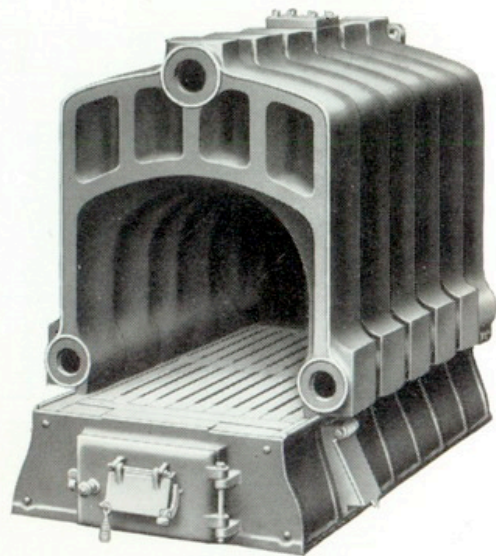
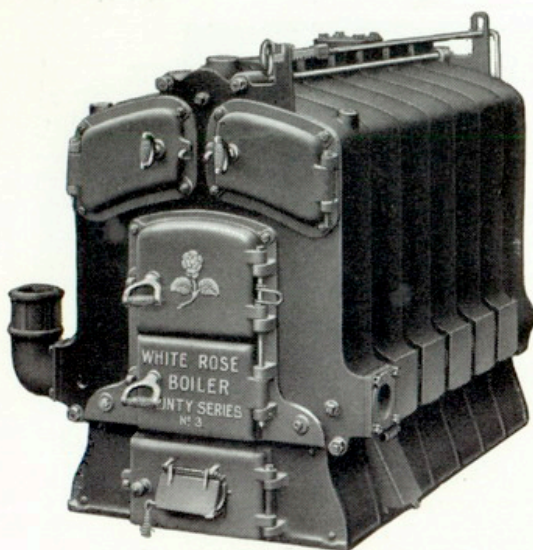
“WHITE ROSE” CAST-IRON SECTIONAL **BOILER**

SERIES B2 FOR WATER



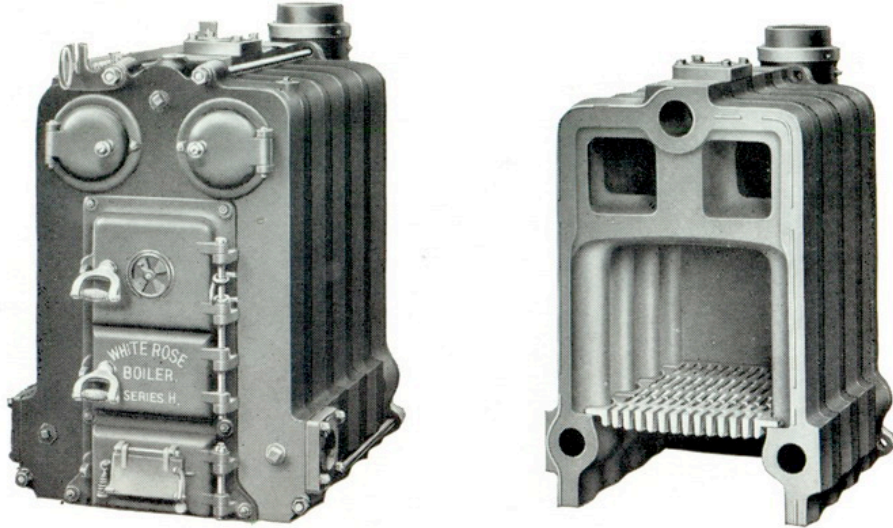
“WHITE ROSE” CAST-IRON SECTIONAL **BOILER**

COUNTY SERIES 3 FOR WATER



“WHITE ROSE” CAST-IRON SECTIONAL **BOILER**

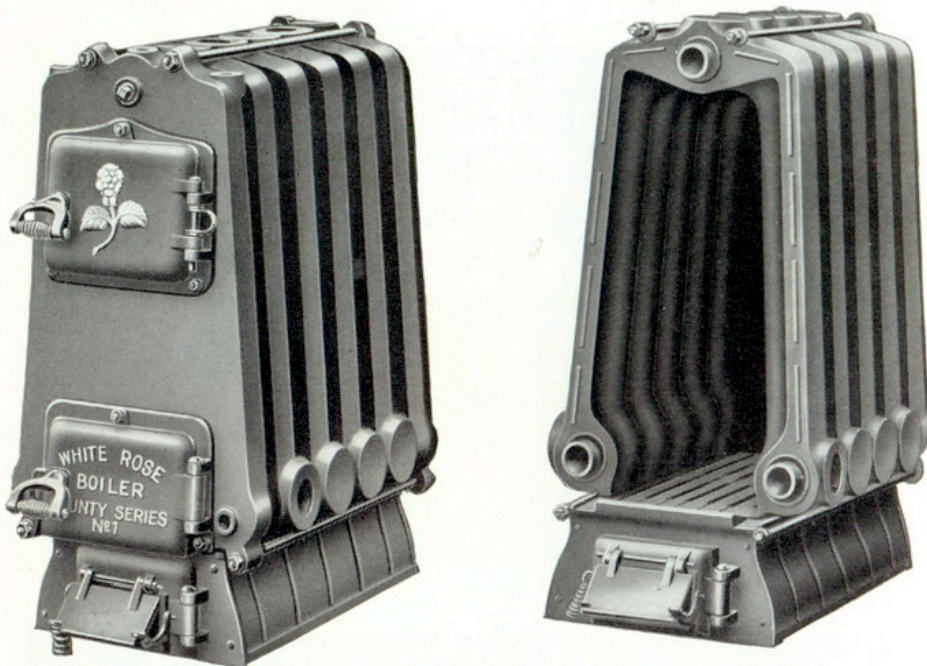
SERIES H FOR WATER



Note the Waterway down to the ground
This boiler can be fitted with front flue

“WHITE ROSE” CAST-IRON SECTIONAL **BOILER**

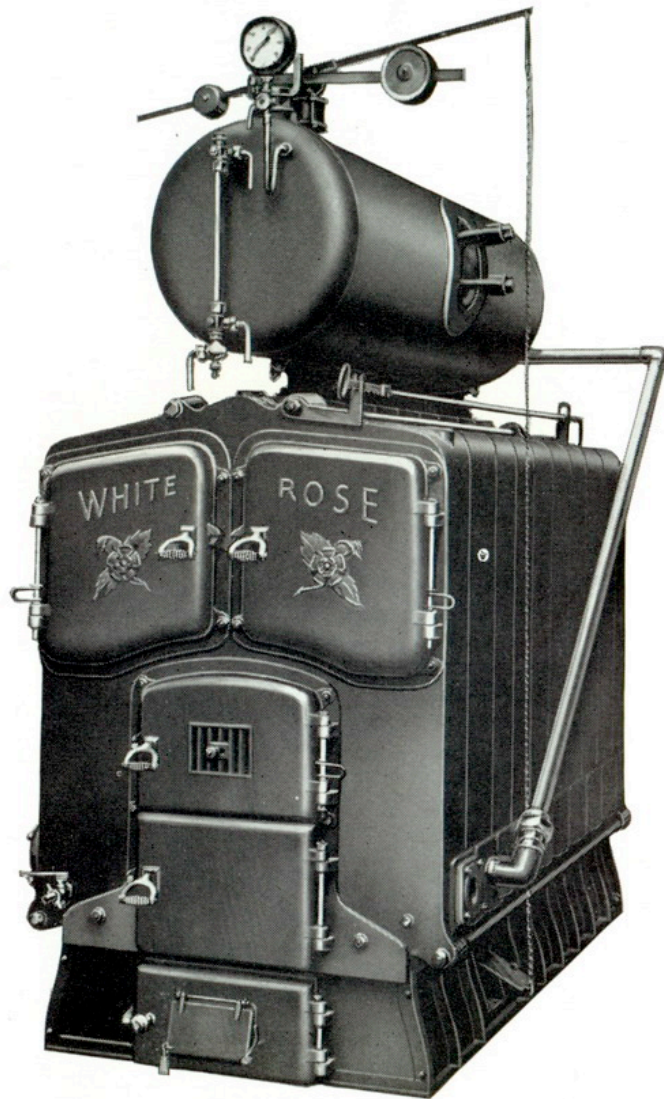
COUNTY SERIES I FOR WATER



Can be fitted with flue at front

"WHITE ROSE" CAST-IRON SECTIONAL BOILER

FOR LOW PRESSURE STEAM



Elevation of Series A1 Boiler for Steam Heating

With special welded wrought steel steam drum mounted on top, which drum gives large steam space and effectually checks priming; also prevents exposure of surfaces to hot flue gases if water level falls low.

All boilers fitted with equalising pipes between drum and bottom of boiler.

All steam drums have large manhole and cover with compensating ring.

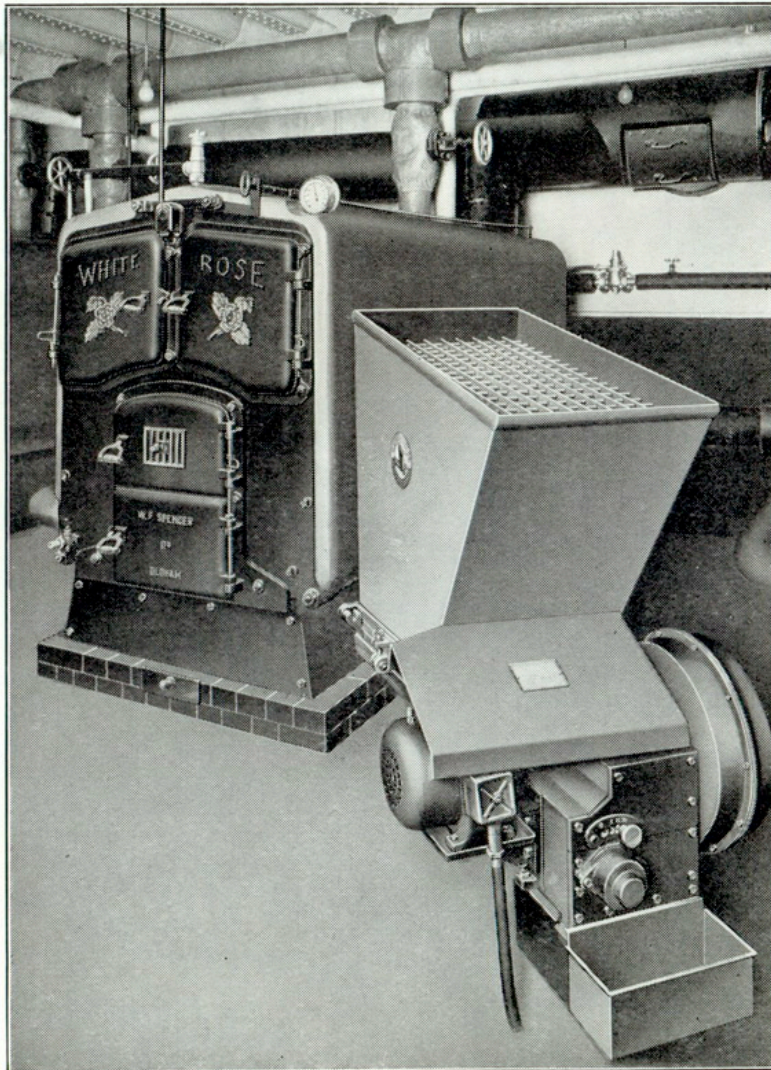
All tested 30 lb. per square inch.

HARTLEY & SUGDEN LIMITED

“WHITE ROSE” CAST-IRON SECTIONAL BOILER

FOR OIL OR MECHANICAL STOKING

“White Rose” Boilers are the best standard cast-iron sectional boilers for firing by oil fuel or mechanical stoker. The gases cannot pass directly into any of the flues, and the three-pass gas travel through the boiler ensures the best efficiency possible in a cast boiler.



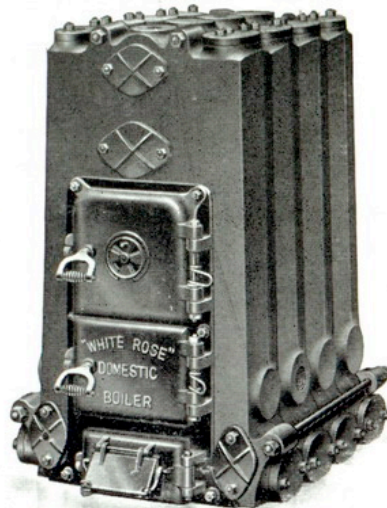
A very convenient layout of a Commercial Model “White Rose” Stoker firing a “White Rose” Sectional Heating Boiler

As these boilers are all fitted with loose grill firebars they are easily convertible at any time and can be fired by any make of stoker in **front or on the side**. Note the large doors for access to firebox for removal of clinkers.

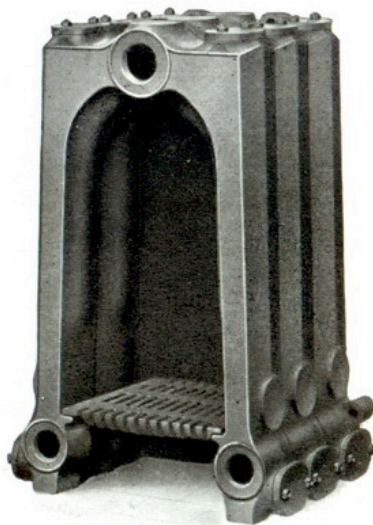
HARTLEY & SUGDEN LIMITED

“WHITE ROSE” CAST-IRON SECTIONAL DOMESTIC BOILER

FOR DOMESTIC HOT WATER TAP SUPPLY



Elevation



Elevation with Front Section Removed

This boiler has very wide waterways carried beneath grate to ground level, with provision for thorough and easy removal of sediment deposited from hard water. The front section has eight large openings and the other sections each have four, offering access to every part of the waterways. For soft water the sections can be treated by the Bower-Barff rustless process and are then supplied with brass connecting nipples.

HARTLEY & SUGDEN LIMITED