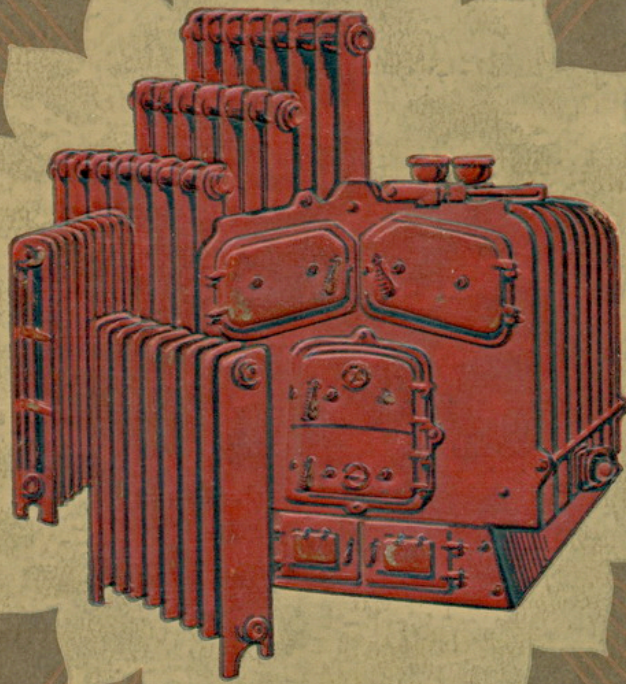


LUMBY'S



"SOLAR" Boilers
&
Radiators

Established 1858

1937 Edition

Telephone ELLAND 125 (two lines)
Telegrams "LUMBYS GREETLAND"

LUMBYS LIMITED

GREETLAND
BOILER WORKS
HALIFAX
ENGLAND

Contractors to the Admiralty, Air Ministry,
War Office, Home Office, H.M. Office of
Works, India Office, Crown Agents for
Colonies, London County Council, Prison
Commissioners, Ministry of Health, etc

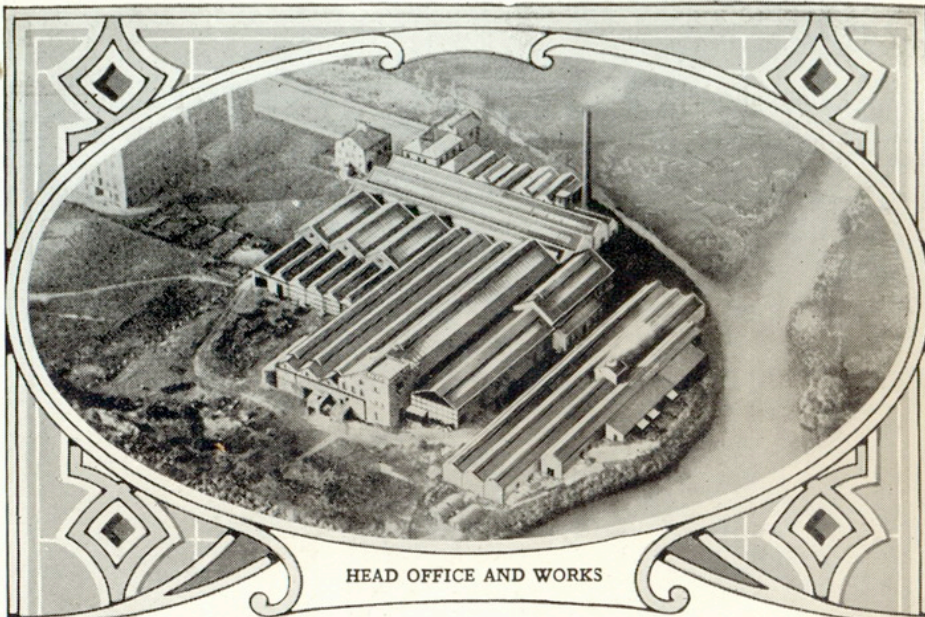
HIGHEST AWARDS WHEREVER EXHIBITED

GRAND PRIX, BRUSSELS, 1897
GOLD & SILVER MEDALS, PARIS EXHIBITION, 1878-9
GOLD MEDAL, PARIS, 1900

London Office and Showrooms

228 SHAFTESBURY AVENUE LONDON WC 2
Telephone TEMPLE BAR 2725 (Facing New Oxford Street)
Telegrams "SOLARISMS WESTCENT LONDON"

All Lists not in accordance with this are cancelled



HEAD OFFICE AND WORKS

Birmingham District Representative

Mr E. REDMAN 142 Hanging Lane Northfield Birmingham
Telephone Priory 1329

Scottish Representative

Mr R. R. KING "Ravenswood" Broomieknowe Lasswade N.B
Telephone Lasswade 97

Bristol District Representative

Mr F. W. LEACH 33 Royal York Crescent Clifton Bristol
Telephone Bristol 35751

London Office and Showroom

Mr B. A. POUNTNEY 228 SHAFTESBURY AVENUE WC2
Telephone Temple Bar 2725 (Facing New Oxford Street)
Telegrams "Solarisms Westcent London"



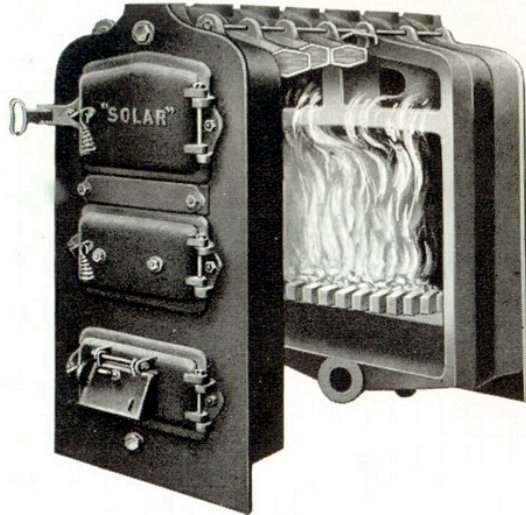
LONDON OFFICE AND SHOWROOM

LUMBY'S BOILERS

"Solar" Sectional Cast Boiler

Model O New Series

Registered Design 603891



Width across Front, 19 in.
Cleaning Plugs, back and front.

Height to top of Tapping, 34½ in.
Return Connections, 7 in. from
floor to centre.

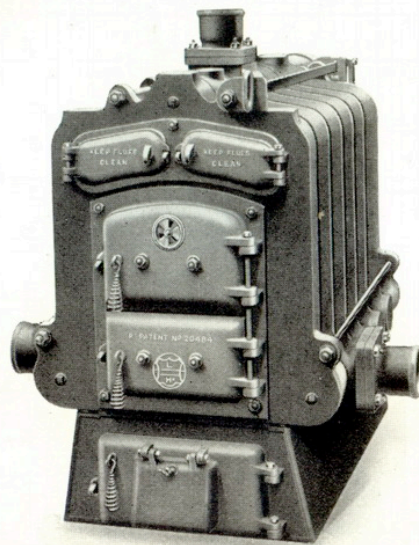
The Waterway extends below the Fire Bars and under the bottom, so that the Boiler may be placed on a Wood Floor without danger.

LUMBY'S BOILERS

"Solar" Sectional Cast Boiler

Model B1 New Series

Patent 381965



Width across body, 24 in.

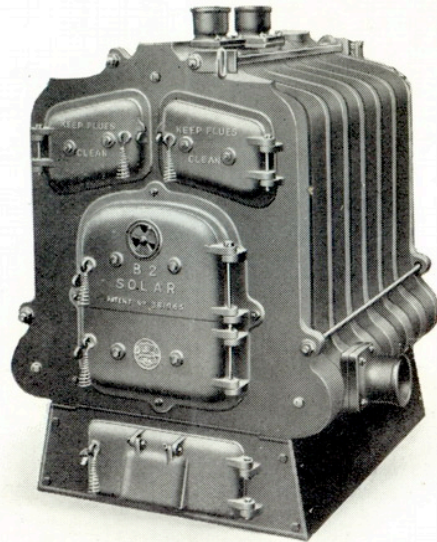
Height from floor, 40⅝ in.

L LUMBY'S BOILERS L

"Solar" Sectional Cast Boiler

Model B2 New Series

Patent 381965

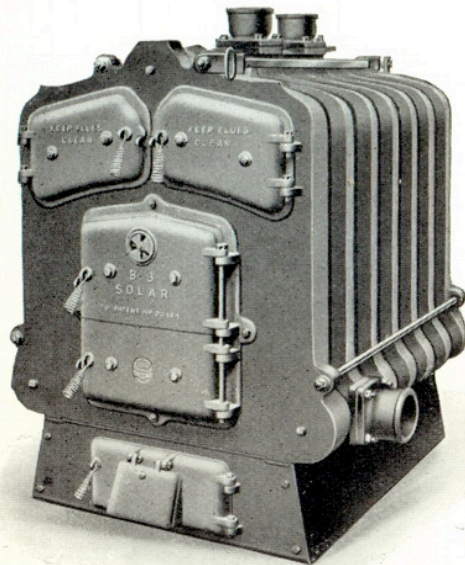


L LUMBY'S BOILERS L

"Solar" Sectional Cast Boiler

Model B3 New Series

Patent 381965



Width across body, 40½ in.

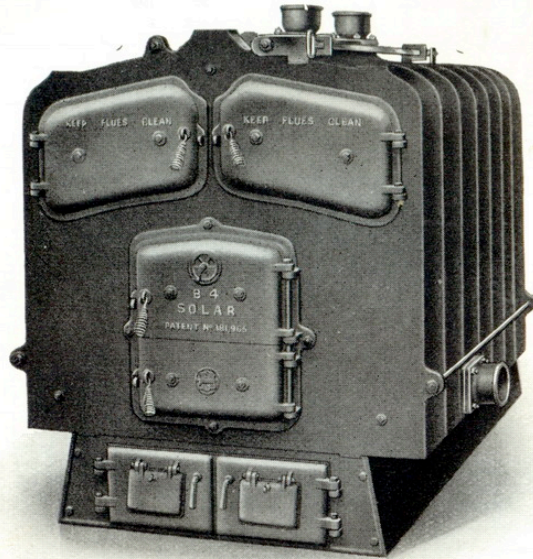
Height from floor, 60½ in.

LUMBY'S BOILERS

"Solar" Sectional Cast Boiler

Model B4 New Series

Patent 381965



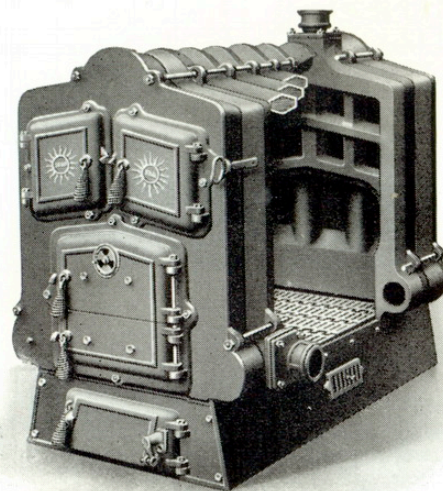
Width across body, 52½ in.

Height from floor, 67½ in.

LUMBY'S BOILERS

"Solar" Sectional Cast Boiler

No. 5 Pattern

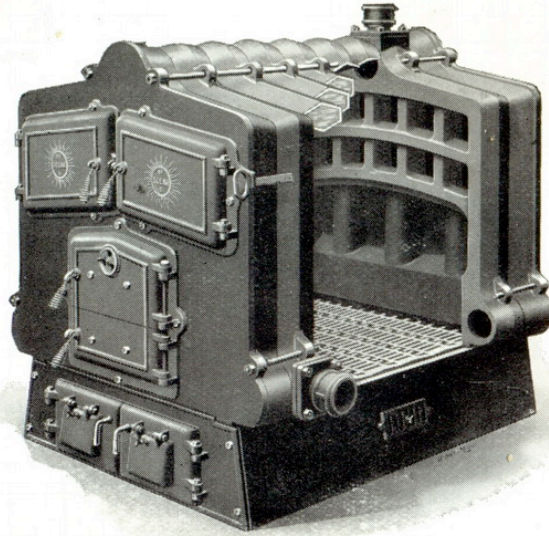


Width across body, 34½ in.

Height from floor, 54 in.

LUMBY'S BOILERS

"Solar" Sectional Cast Boiler No. 6 Pattern



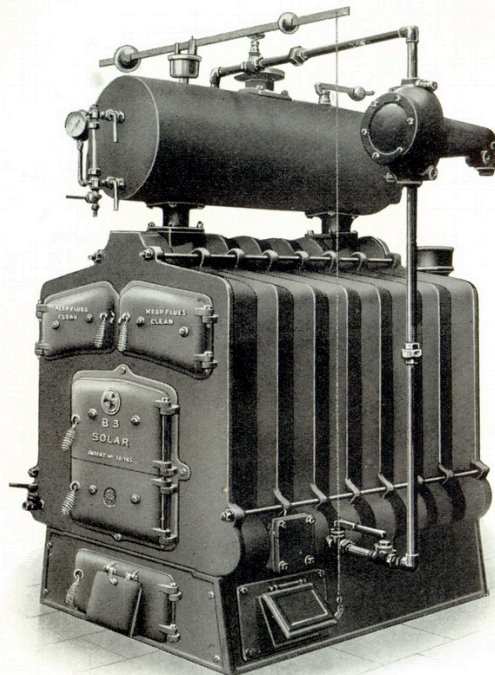
Width across body, 47 in.

PRICE LIST

Height from floor, 57½ in.

LUMBY'S BOILERS

"Solar" Sectional Cast Boiler For Low-pressure Steam Heating



MODEL B38S BOILER, FITTED WITH "SOLAR" AUTOMATIC WATER-FEEDER

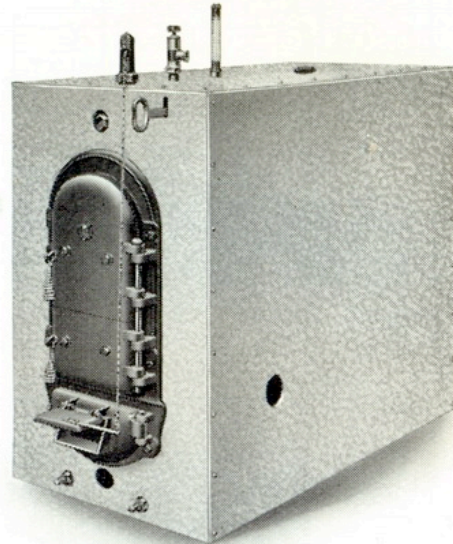
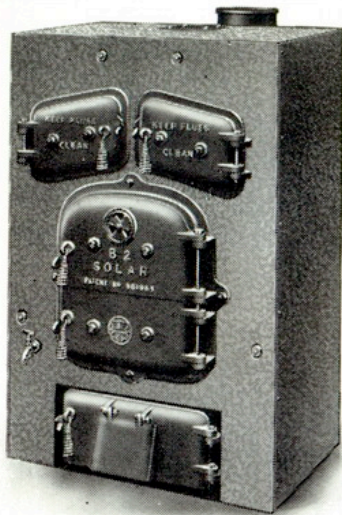
LUMBY'S BOILERS

Galvanised Steel Insulated Casings

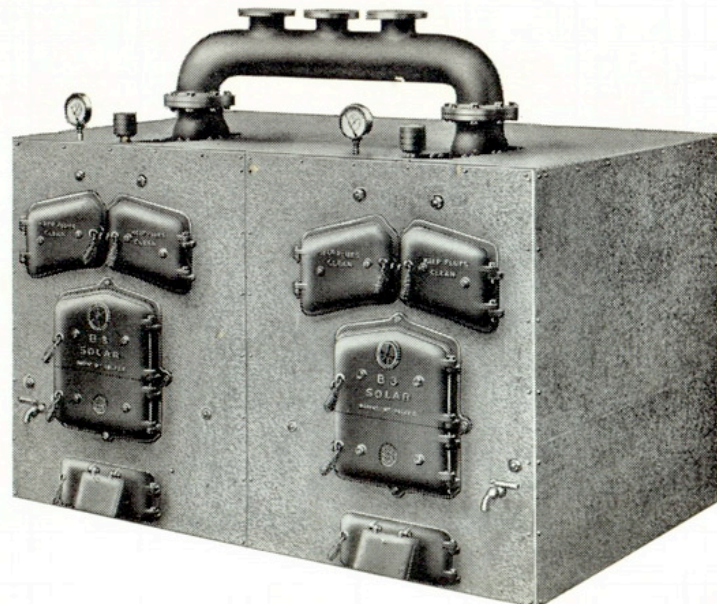
For "Solar" Sectional Boilers

All Screwed together

Neat and easy to erect



MODEL B2 SOLAR BOILER IN CASING No. S35 SOLAR DOMESTIC BOILER IN CASING



TWO MODEL B3 SOLAR BOILERS IN CASING

Prices on opposite page

"Solar" Sectional Cast Domestic Boiler

Constructed for 100 lb. Test Pressure

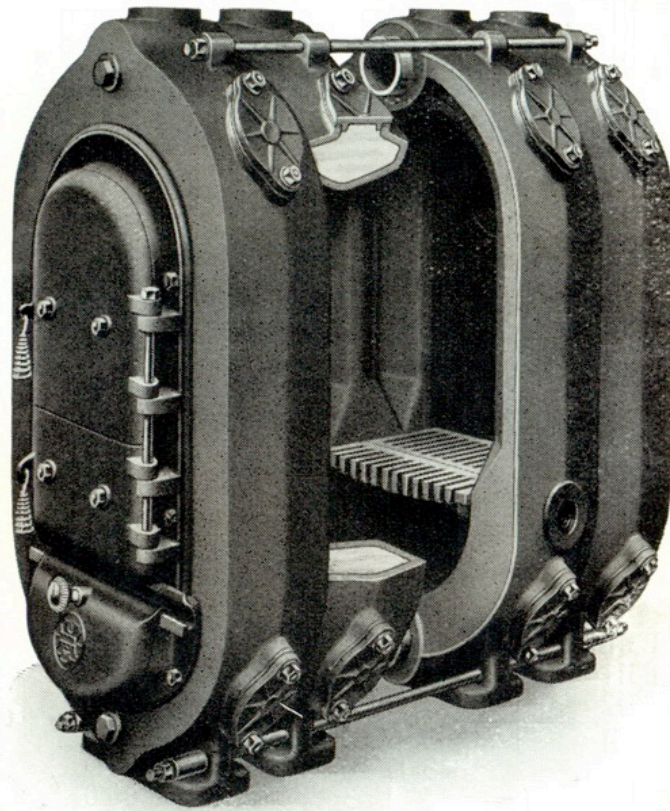
For Central Heating or Hot Water Supply

Made from metal $\frac{7}{16}$ in. to $\frac{1}{2}$ in. in thickness. Waterway below and under firebars ensuring perfectly free and uninterrupted circulation. Each section contains more than seven gallons of water. Cast with suitable supports for easy handling and erection. The largest boiler of its type designed for Domestic service.

Note

Open Front

Large Double
Firing Doors



Width across Front, 24 in. Height from Floor, 46 in.

Section showing wide waterways and easy cleaning facilities. All parts of the Boiler can be easily cleaned, as will be noticed from the position of the mudholes. No other Boiler has such a wide waterway.

Can be supplied with Insulated Casing if desired.

WATERWAYS $7\frac{1}{2}$ in. \times 5 in. OUTSIDE