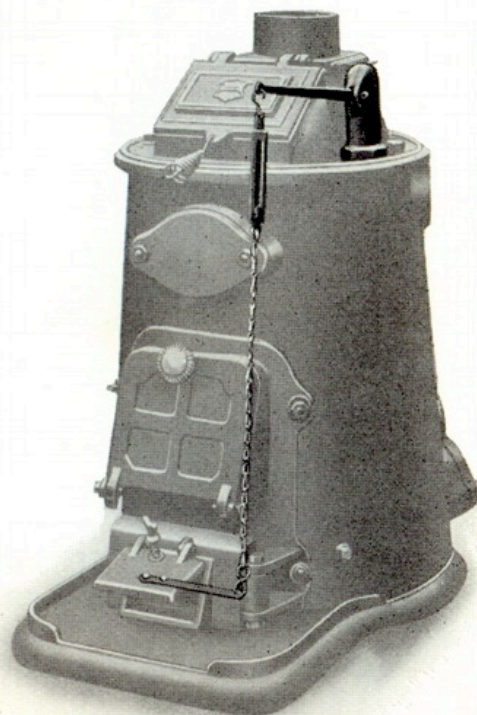


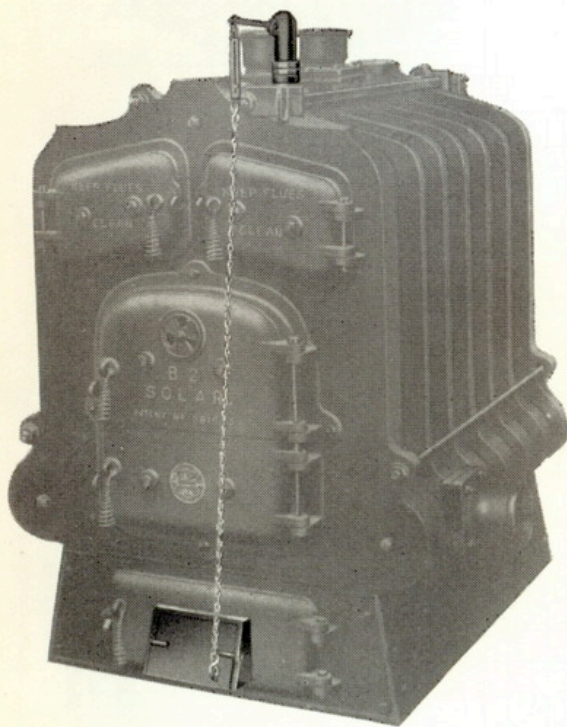
## **“Solar” Sectional Cast Boiler**

Models O and B1 can be fitted with Front Smoke Flue (as illustrated) without extra charge.



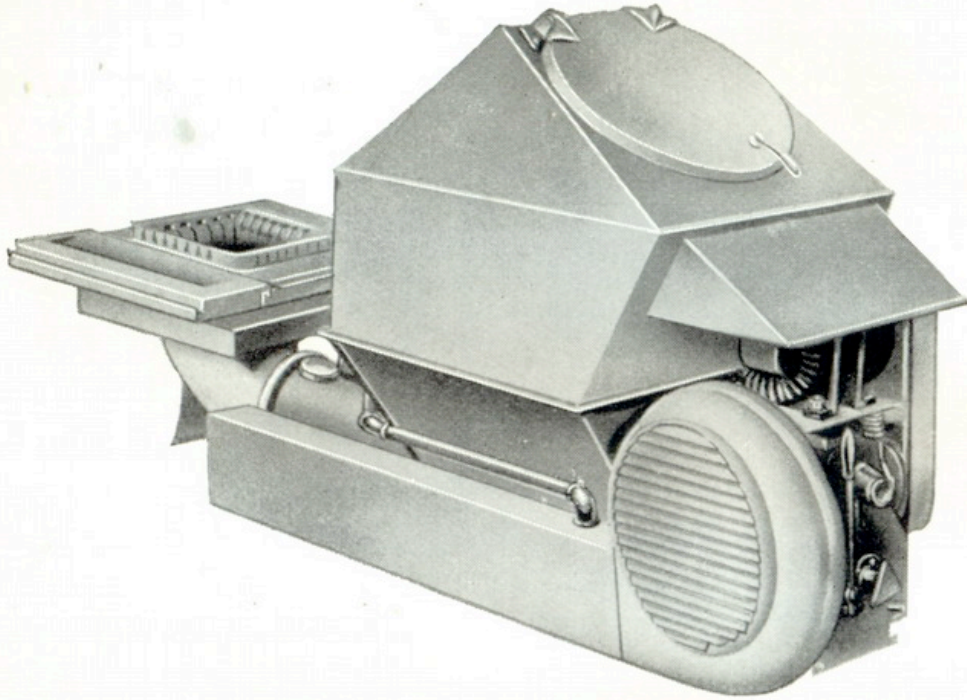
## **“Solar” Automatic Damper Regulator**

For Controlling the Fire in  
Hot Water Boilers.

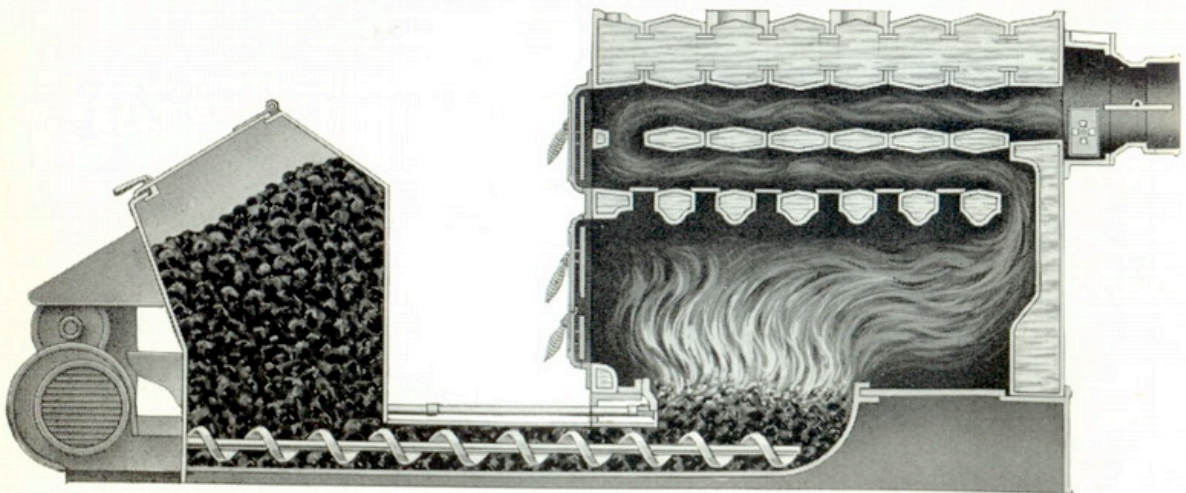


L. & L. LUMBYS BOILERS & L.

### Automatic Coal Firer

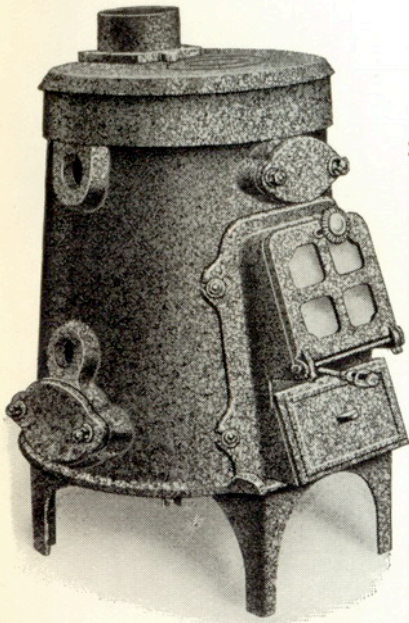


BITUMINOUS COAL MODEL



## "Solar" Domestic Cast Boiler

With Corrugated Firebox  
For Hot Water Supply and small Central Heating Installations

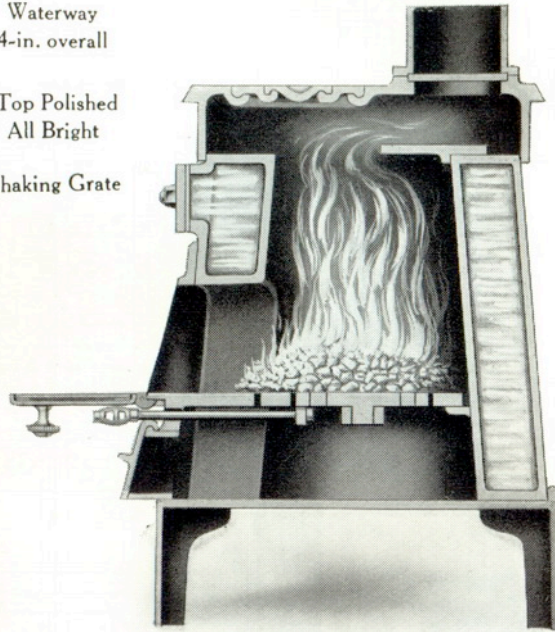


ELEVATION  
Showing Mottled Enamelled Finish.

Waterway  
4-in. overall

Top Polished  
All Bright

Shaking Grate



SECTION

PRICE LIST

## "Solar" Domestic Cast Boiler

For Hot Water Supply and small Central Heating Installations

Waterway, 4-in. overall



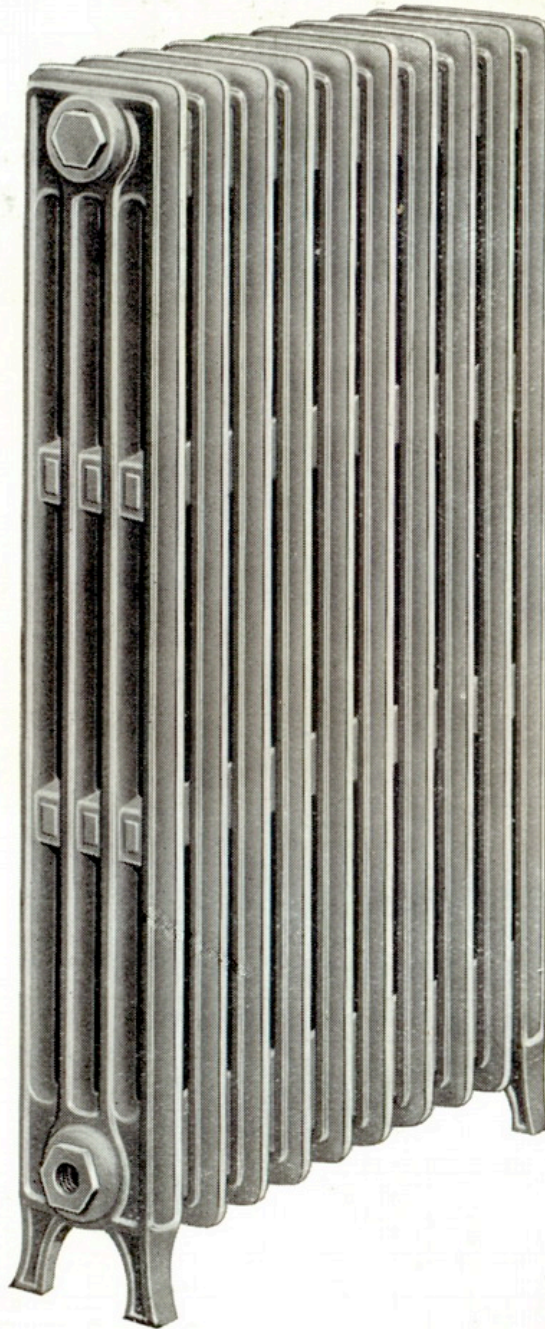
L & L LUMBY'S BOILERS L & L

## "Solar Doric" Four-column Radiators

Sections,  $5\frac{5}{8}$  in. wide

Width at Feet,  $5\frac{5}{8}$  in.

Loops,  $2\frac{1}{4}$ -in. centres



Elevation of 36 in. high Radiator.



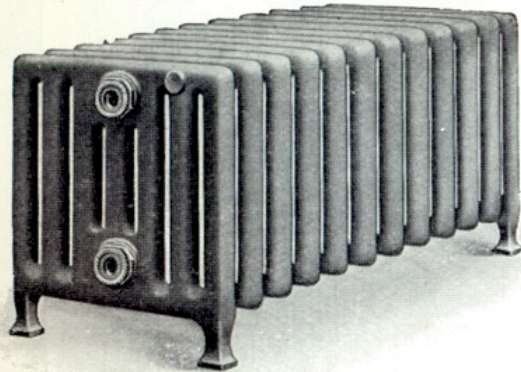
## "Solar" Window Radiators

For Hot Water or Steam Heating

Sections 13 in. high × 12 in. wide

Width at foot 11 $\frac{1}{4}$  in.

WIDE OPEN  
AIR SPACES  
GIVING THE  
GREATEST  
EFFICIENCY  
IN  
RADIANT HEAT



PLAIN  
HYGIENIC  
SURFACES  
No  
OBSTRUCTION  
EASY TO  
CLEAN

Bottom Holes 3 $\frac{7}{8}$  in. from floor to centre. Top Holes 11 $\frac{1}{8}$  in. from floor to centre



## "Solar" Hospital Radiators

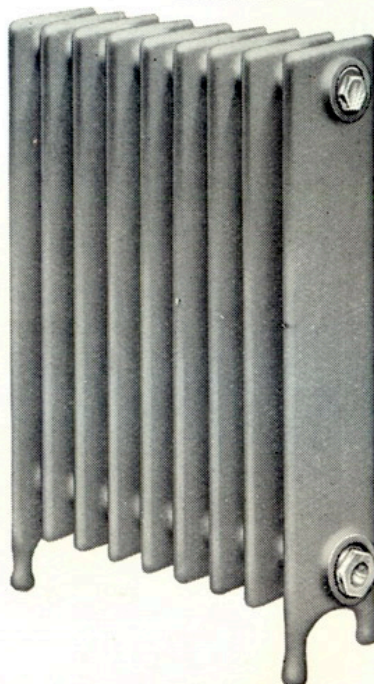
WIDE PATTERN

Sections  
7 in. wide

Total height with feet  
36 30 24 18 inches

Total height without feet  
34 $\frac{1}{8}$  28 $\frac{1}{8}$  22 $\frac{1}{8}$  16 inches

Width at feet  
7 in.



Height to centre of top  
openings  
34 $\frac{1}{8}$  28 $\frac{1}{8}$  22 $\frac{1}{8}$  16 $\frac{1}{8}$  inches

Height to centre of bottom  
openings  
4 $\frac{1}{4}$  4 $\frac{1}{4}$  4 $\frac{1}{4}$  4 $\frac{1}{4}$  inches

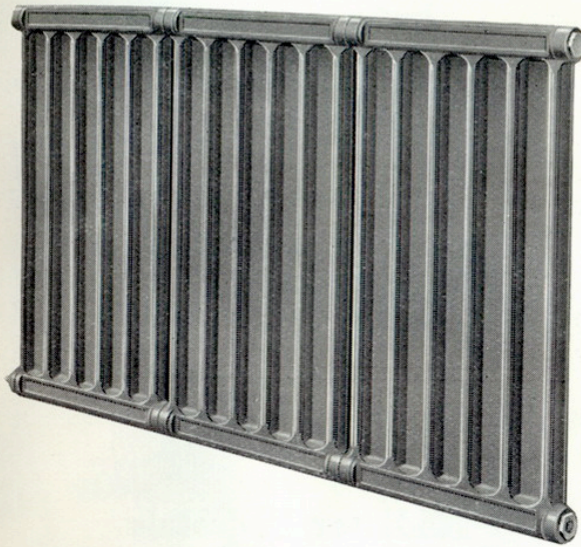
Loops 2 $\frac{1}{2}$  in.  
Centres

Air space between  
Sections 1 $\frac{3}{8}$  in.

LUMBY'S BOILERS

## The "Doric" Wall Radiator

For Hot Water or Steam Heating  
Width 2½ in. Plain Hygienic Surfaces. Easy to Clean



LUMBY'S BOILERS

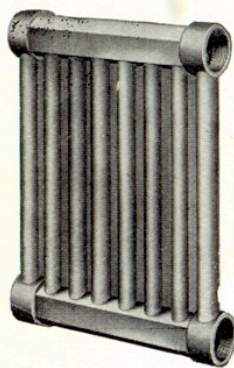
## "Solar" Wall Radiators

For Hot Water or Steam Heating

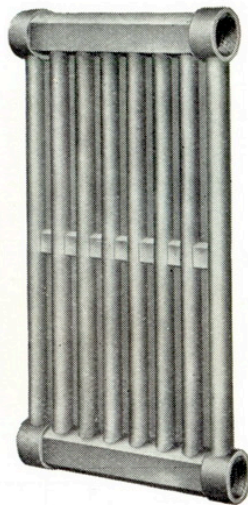
*Registered Design*

Width 2½ in.

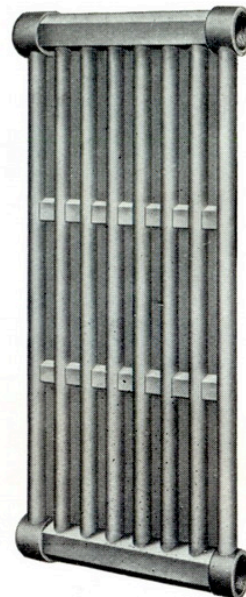
Plain Hygienic Surfaces  
Easy to Clean



Elevation  
Each Section 16" high ×  
12¼" long



Elevation  
Each Section 24" high ×  
12¼" long

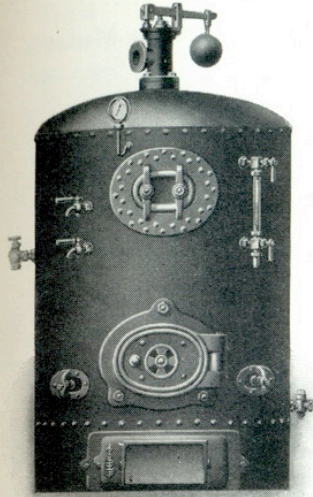


Elevation  
Each Section 30" high ×  
12¼" long

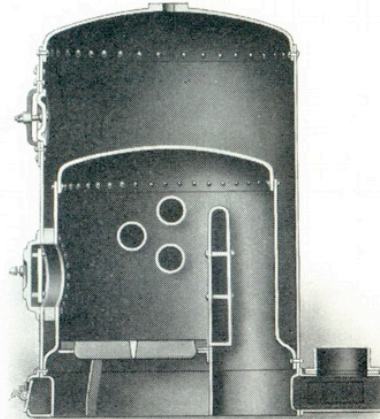
## "Cuisine" Vertical Steam Boiler

*Copyright and Registered Design*

With Waterway Bridge in Firebox Working Pressure 25 lb.  
Tested to 50 lb. Hydraulic Pressure



ELEVATION

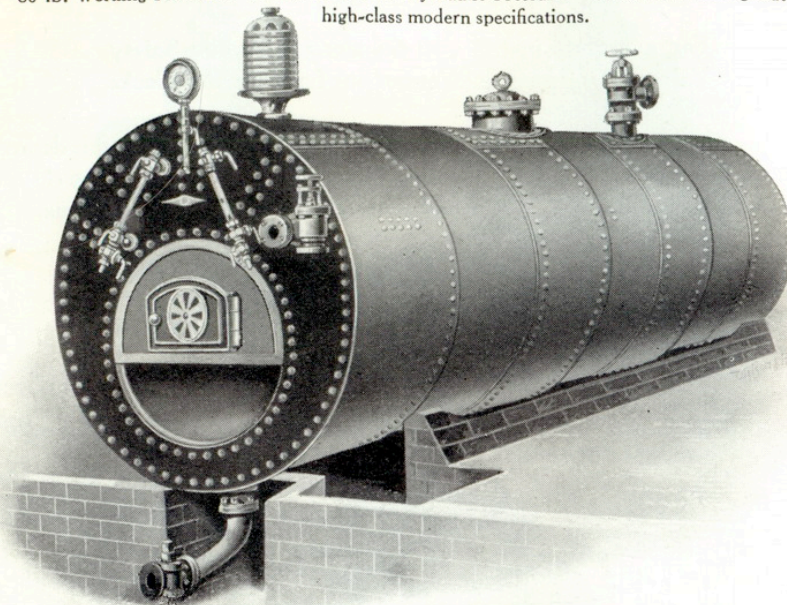


SECTION

A most efficient Boiler for generating steam, for cooking and other purposes in Hotels or Public Institutions.

## High-class Steel Cornish Boiler

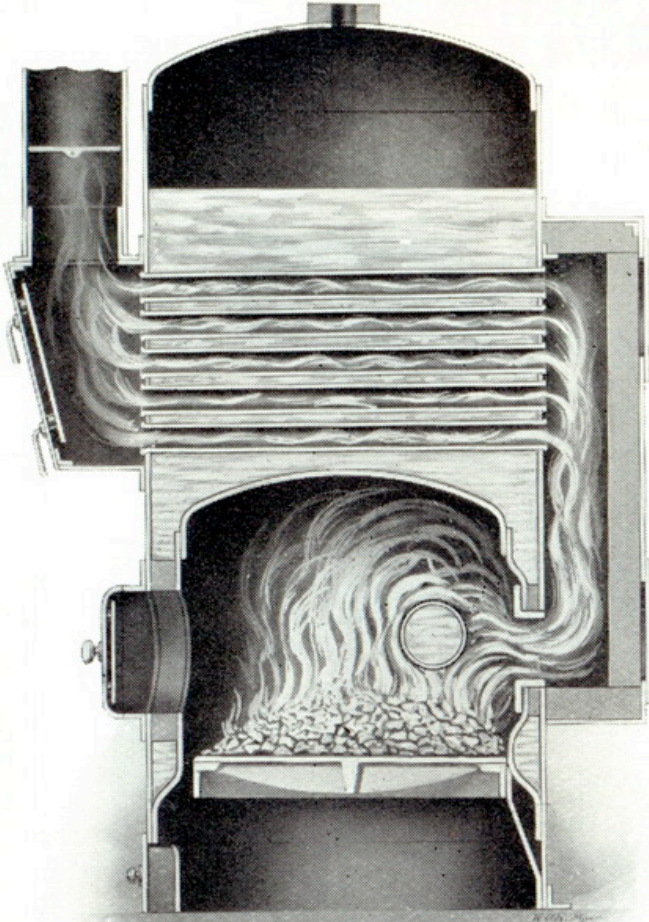
80 lb. Working Pressure. Tested to 160 lb. Hydraulic Pressure. Constructed throughout to high-class modern specifications.



LUMBY'S BOILERS

# "Marine" Vertical Multitubular Steam Boiler

Horizontal  
Tubes,  
all totally  
submerged



100 lb.  
Working  
Pressure

200 lb.  
Hydraulic  
Test Pressure

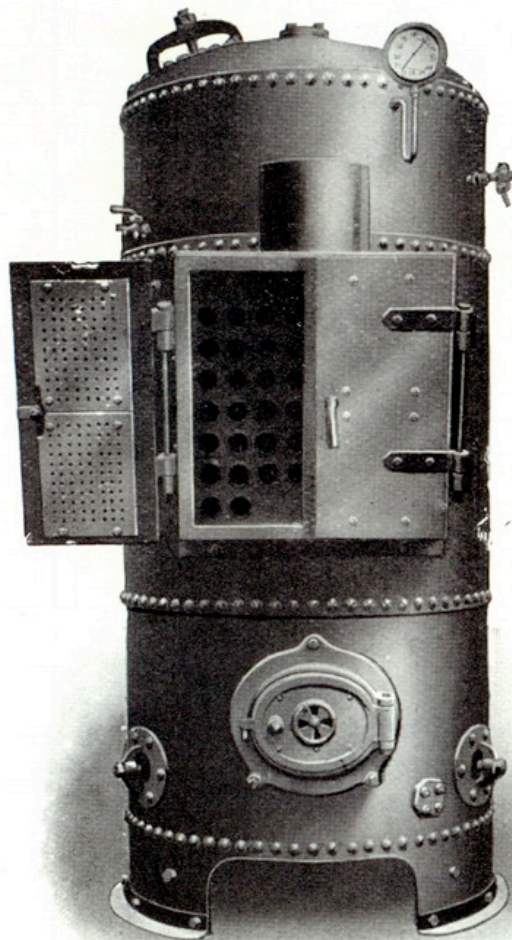


L & F LUNBY'S BOILERS & F

## **"Marine" Vertical Multitubular Steam Boiler**

The most Economical and Efficient Vertical Steam Boiler on the Market

Rapid Steaming

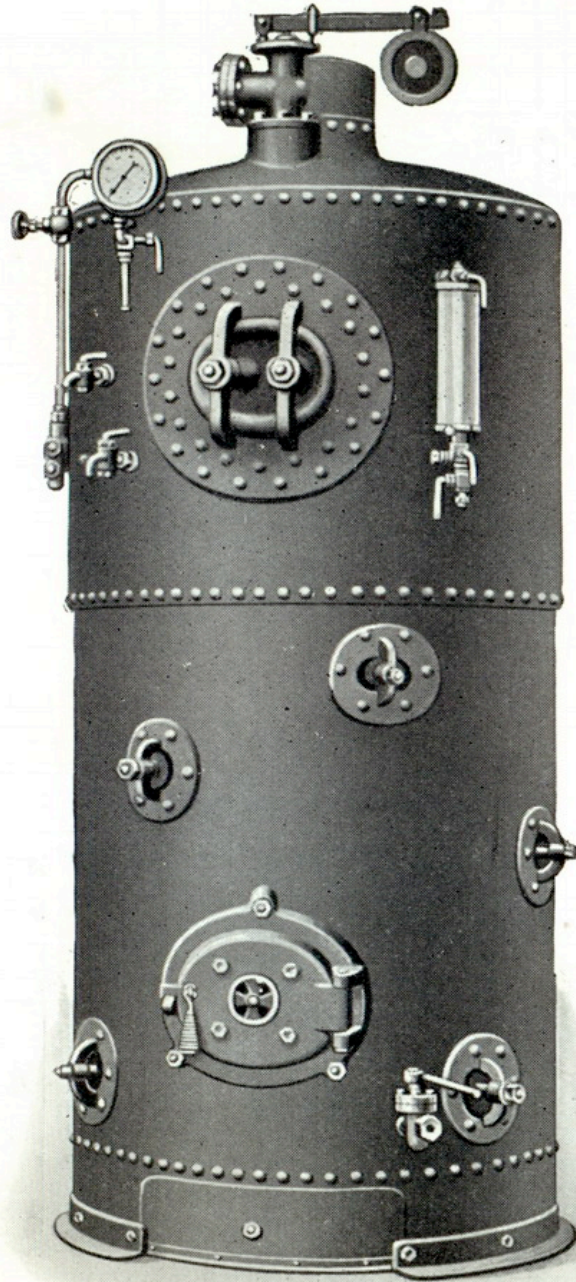


Consumes considerably less Fuel than Cross-tube Boiler. Supplied to various Government Departments. Accepted by all the Insurance Companies. Any special size or pressure boiler quoted for immediately on request. Detailed Specifications and Working Drawings submitted on receipt of inquiry.

## Vertical Steam Boilers

Made from Siemen's Mild Steel Plates

80 lb. Working Pressure      Tested to 160 lb. Hydraulic Pressure  
100 lb. Working Pressure    Tested to 200 lb. Hydraulic Pressure



ELEVATION