

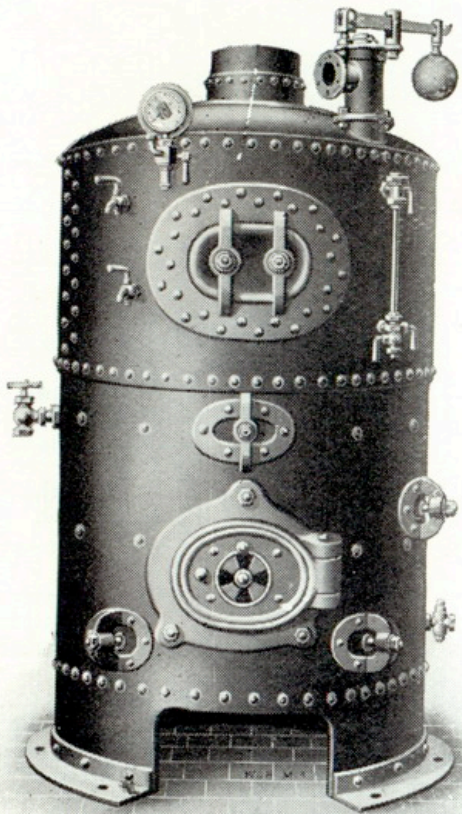
High-class Vertical Donkey Steam Boilers

(Dwarf Pattern)

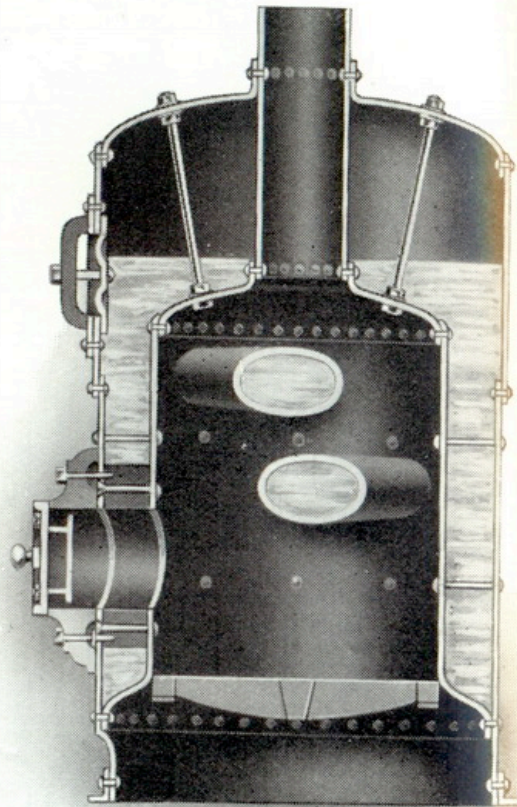
With Cross Tubes in Fire Box

80 lb. Working Pressure
100 lb. Working Pressure

Tested to 160 lb. Hydraulic Pressure
Tested to 200 lb. Hydraulic Pressure



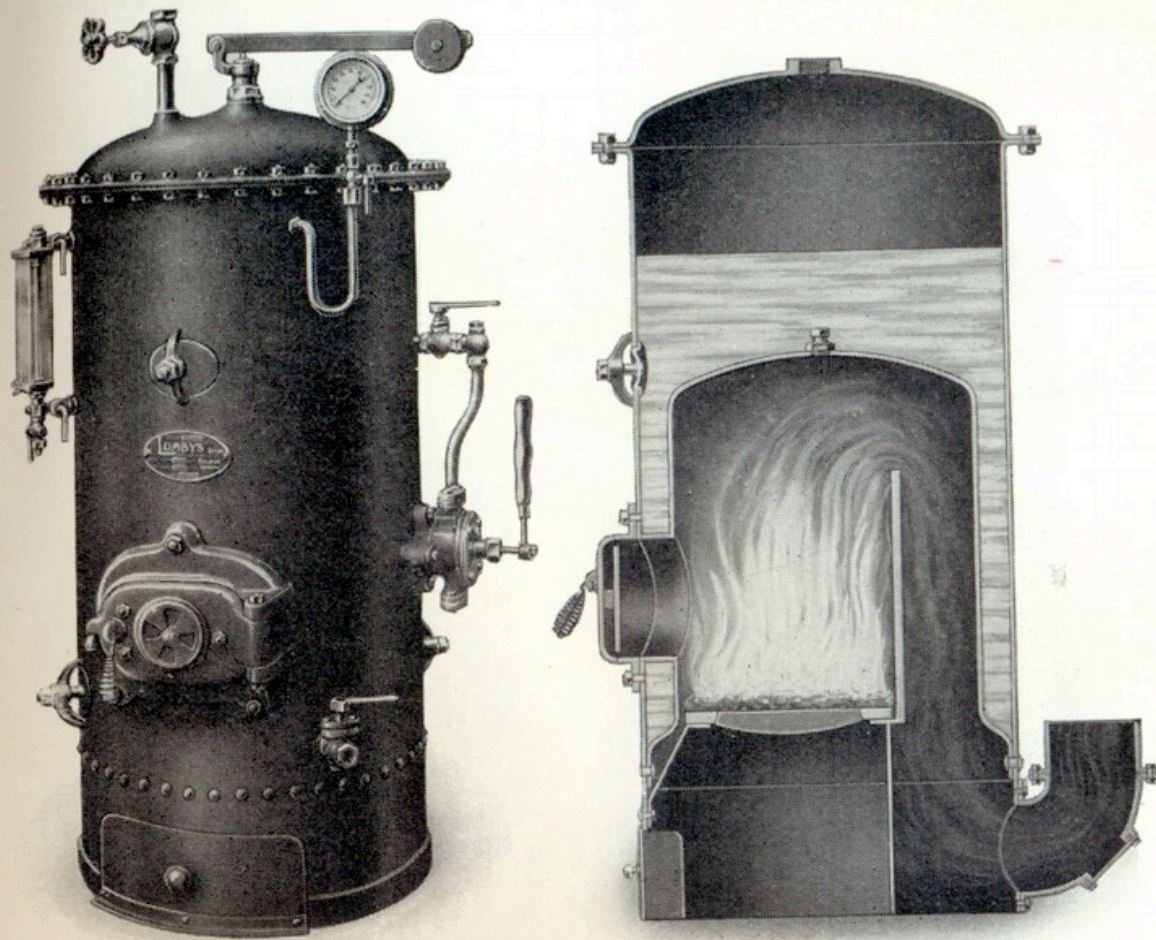
ELEVATION



SECTION

No. 4 "Dairy" Boiler

30 lb. Working Pressure 60 lb. Hydraulic Test Pressure
Evaporation—70 lb. per hour normal } From and at 212° F.
100 lb. per hour maximum }



ELEVATION

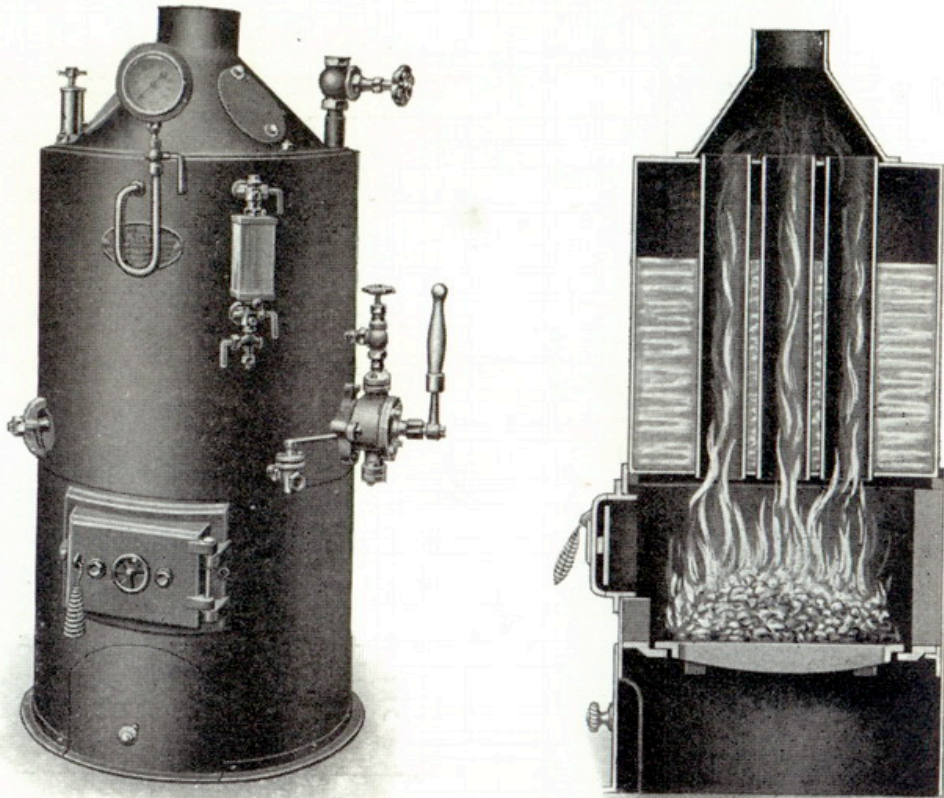
SECTION

Size 4 ft. 6 in. high \times 2 ft. diam.

L & L LUMBYS BOILERS L & L

“Dairy” Steam Boiler

Welded Boiler for 25 lb. working pressure Tested to 50 lb. pressure
Riveted Boiler for 50 lb. working pressure Tested to 100 lb. pressure
Specially suitable for Dairies, etc. where steam is required for cleansing and sterilising Dairy Utensils
and for boiling and scalding Cattie Food, etc.



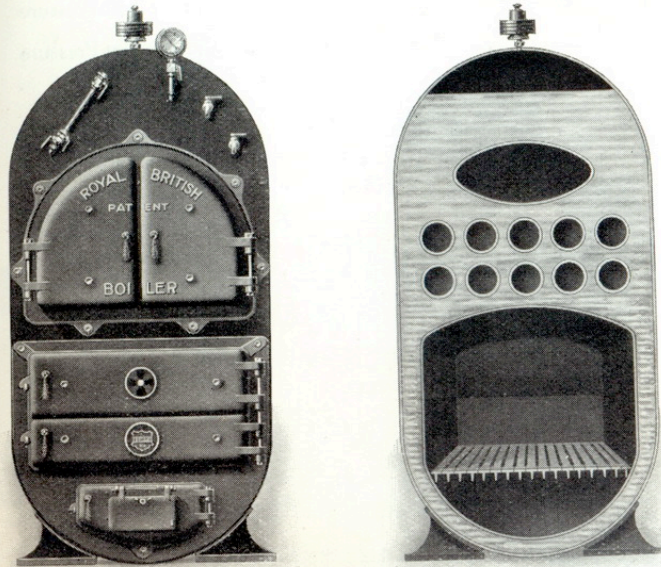
Welded "Royal British" Boiler

Patent 220101

For Low Pressure Steam Heating

25 lb. Working Pressure

Tested to 50 lb. Pressure

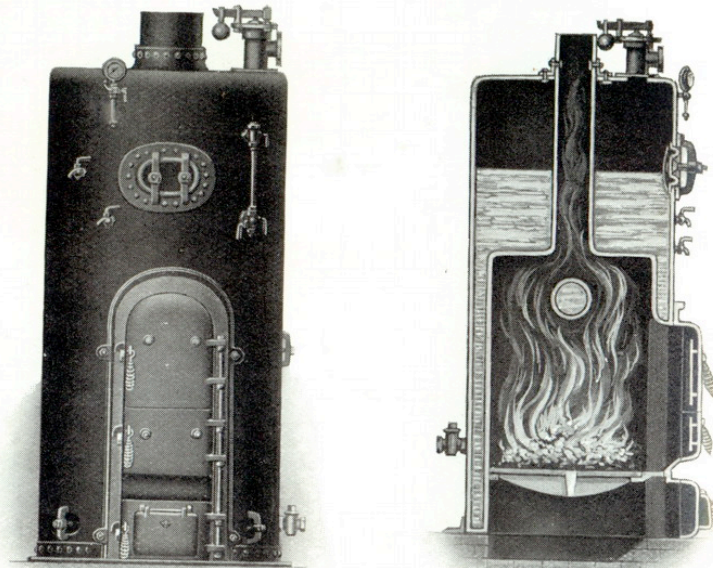


Welded Vertical Steam Boiler

25 lb. Working Pressure

50 lb. Test Pressure

For Low-pressure Steam Heating, Steam Cooking, Drying, and other purposes

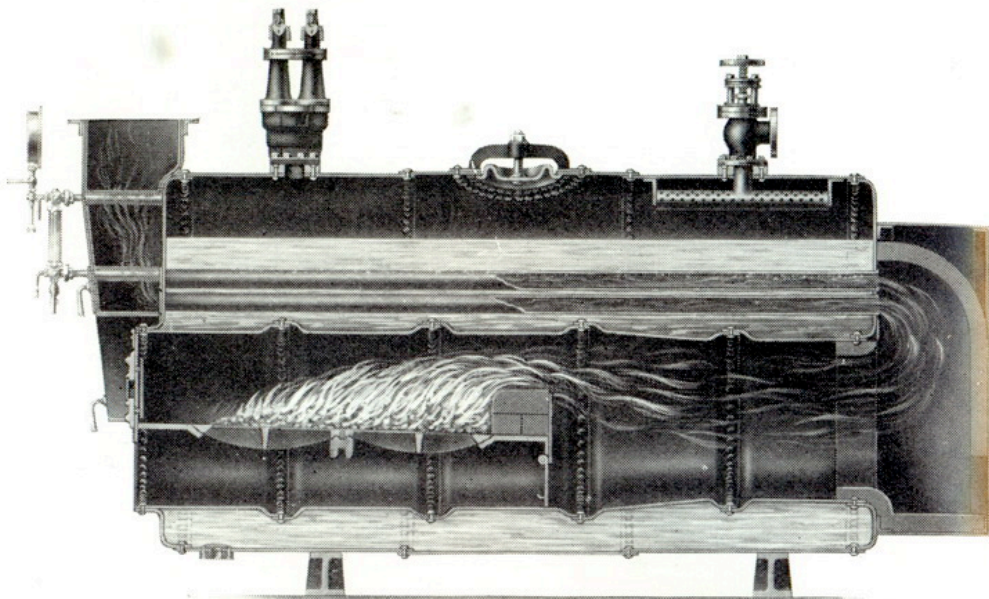


ELEVATION

SECTION

“Economic” Multitubular Independent Steam Boiler

80 lb. Working Pressure 160 lb Hydraulic Test Pressure
100 lb. Working Pressure 200 lb. Hydraulic Test Pressure



A highly efficient and economical Steam Boiler.

Built under modern conditions, latest machinery, and first-class workmanship.

Boilers constructed to pass the inspection of any Insurance Company.

Eminently suitable for restricted spaces.

All Tubes expanded and Tube Ends beaded over.

Boilers covered with our usual Guarantee.

These Boilers can be arranged to burn Oil Fuel.

*Any Special Size or Pressure Boiler quoted for
Detailed Specification and Working Drawings submitted*

"Colonial" Multitubular Independent Steam Boiler

Self-contained Boiler

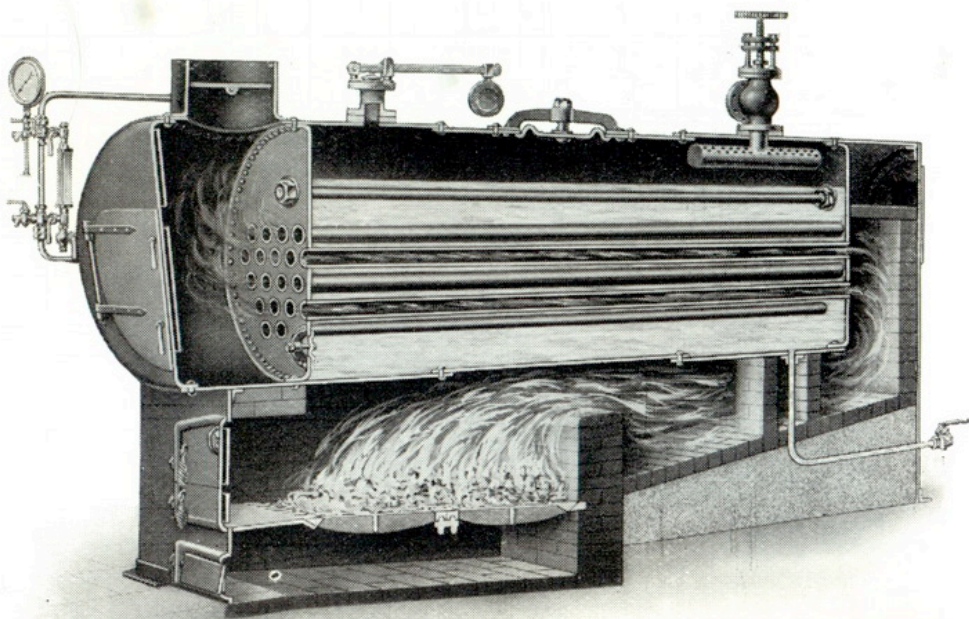
No External Brickwork

80 lb. Working Pressure

160 lb. Hydraulic Test Pressure

100 lb. Working Pressure

200 lb. Hydraulic Test Pressure



All rivet holes drilled.

All riveting done by machine.

Boiler covered with our usual Guarantee.

A most economical and efficient Steam Boiler.

Tubes all totally submerged.

Boilers built to pass the inspection of any Insurance Company.

All Tubes expanded and Tube Ends beaded over.

Specially suitable for confined spaces and limited head room.

Mild Steel Cylindrical Boiler, Steel Plate Sides, Firebrick Lined.

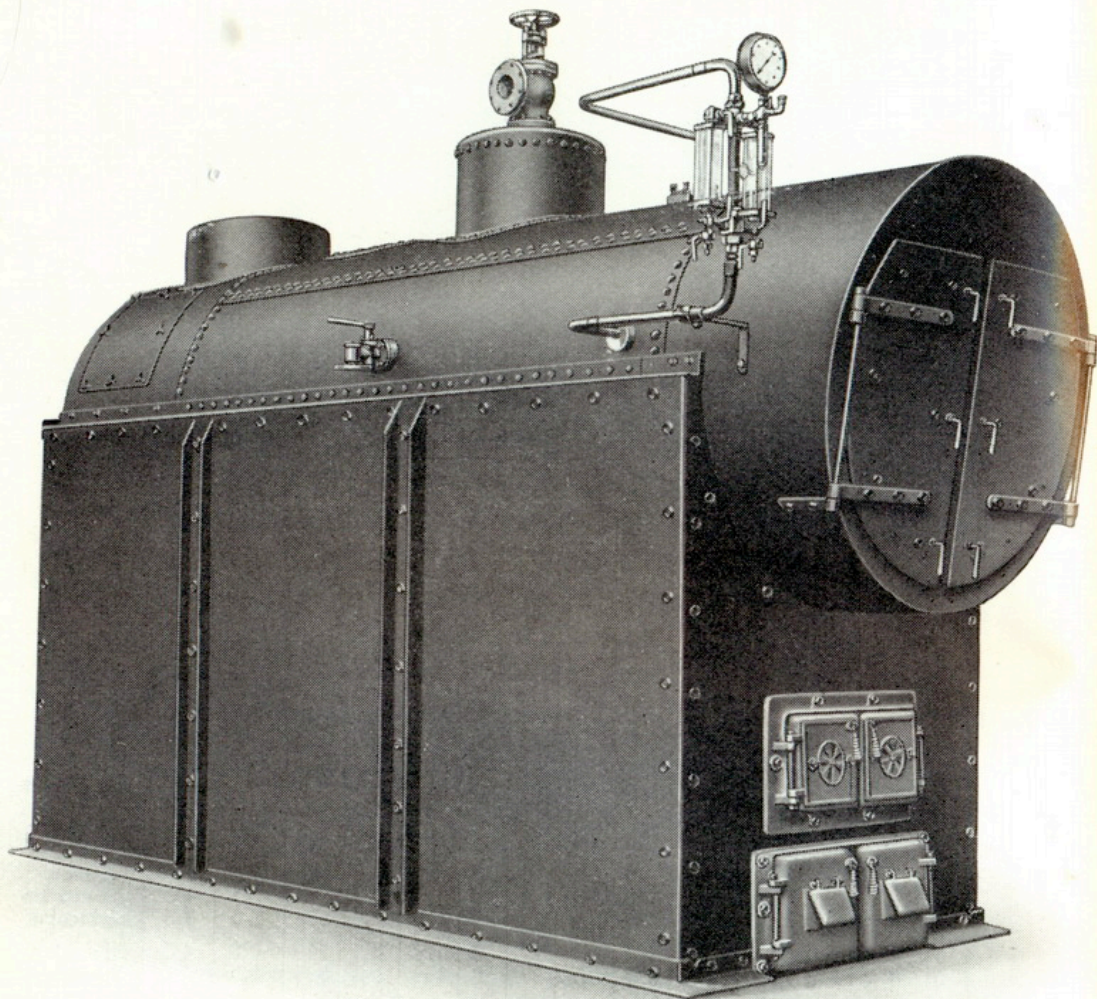
These Boilers are eminently suitable for burning Wood Fuel
and for automatic stoking

Any Special Size or Pressure Boiler quoted for

Detailed Specification and Working Drawings submitted

"Colonial" Multitubular Double Return Independent Steam Boilers

Self-contained Boiler	No External Brickwork
80 lb. Working Pressure	160 lb. Hydraulic Test Pressure
100 lb. Working Pressure	200 lb. Hydraulic Test Pressure

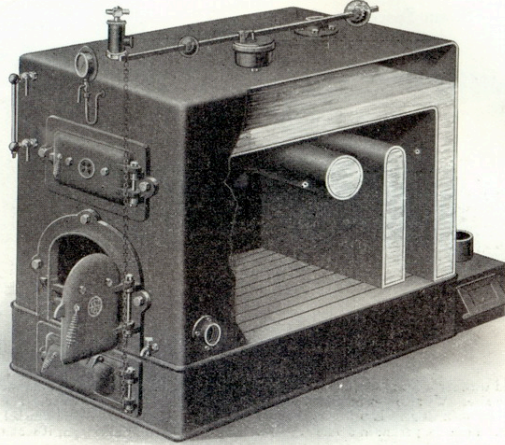


Specially suitable for confined spaces and limited head room. A most economical and efficient steam boiler. All rivet holes drilled. All riveting done by machine. All tubes expanded and tube ends beaded over. Boilers built to pass the inspection of any Insurance Company. Boilers can be arranged for hot water heating, hand fired or automatic stoker. *These boilers are eminently suitable for burning wood fuel.*

L & L LUNBY'S BOILERS L & L

Welded "Caxtonia" Independent Steam Boiler

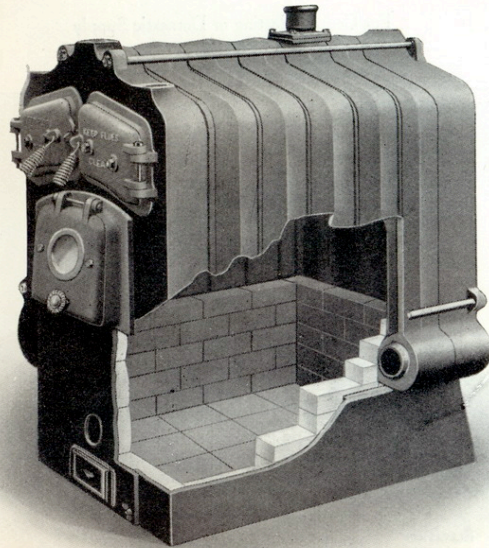
For Low-pressure Steam Heating
25 lb. Working Pressure Tested 50 lb. Pressure
Efficient and Economical



L & L LUNBY'S BOILERS L & L

"Solar" Cast Sectional Boiler

For Hot Water and Low Pressure Steam Heating
Adapted for Oil and Stoker Firing



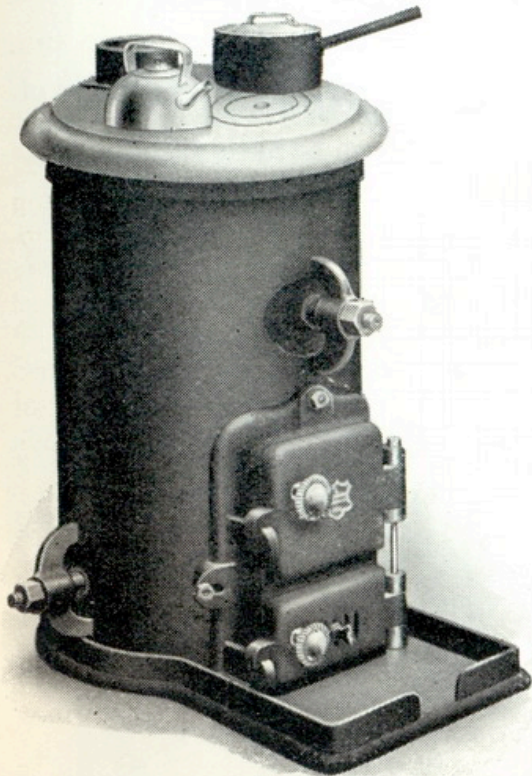
"SOLAR" BOILER, OIL FIRED

Suitable for any make of Oil Burner

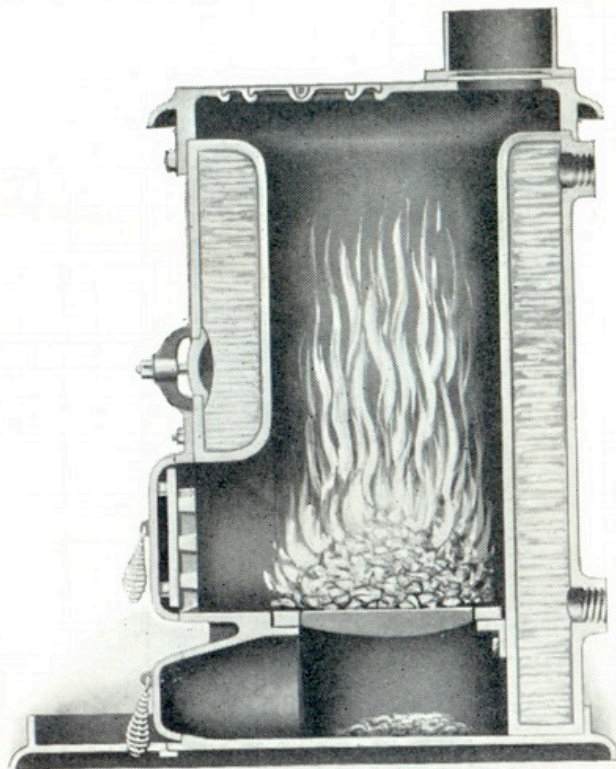
Firebricks shown are to be supplied with Oil Burner

Welded "Royal Gem" Hot Water Boiler

Special points of utility are the Wide Waterways; easy facility for cleaning out sediment and lime deposits; simplicity of construction; the direct draught is a great help in case of defective chimneys and when two flues join together; at the same time the Boiler can be damped down and run under slow combustion under normal conditions; large fuel capacity. Top polished all bright.



ELEVATION



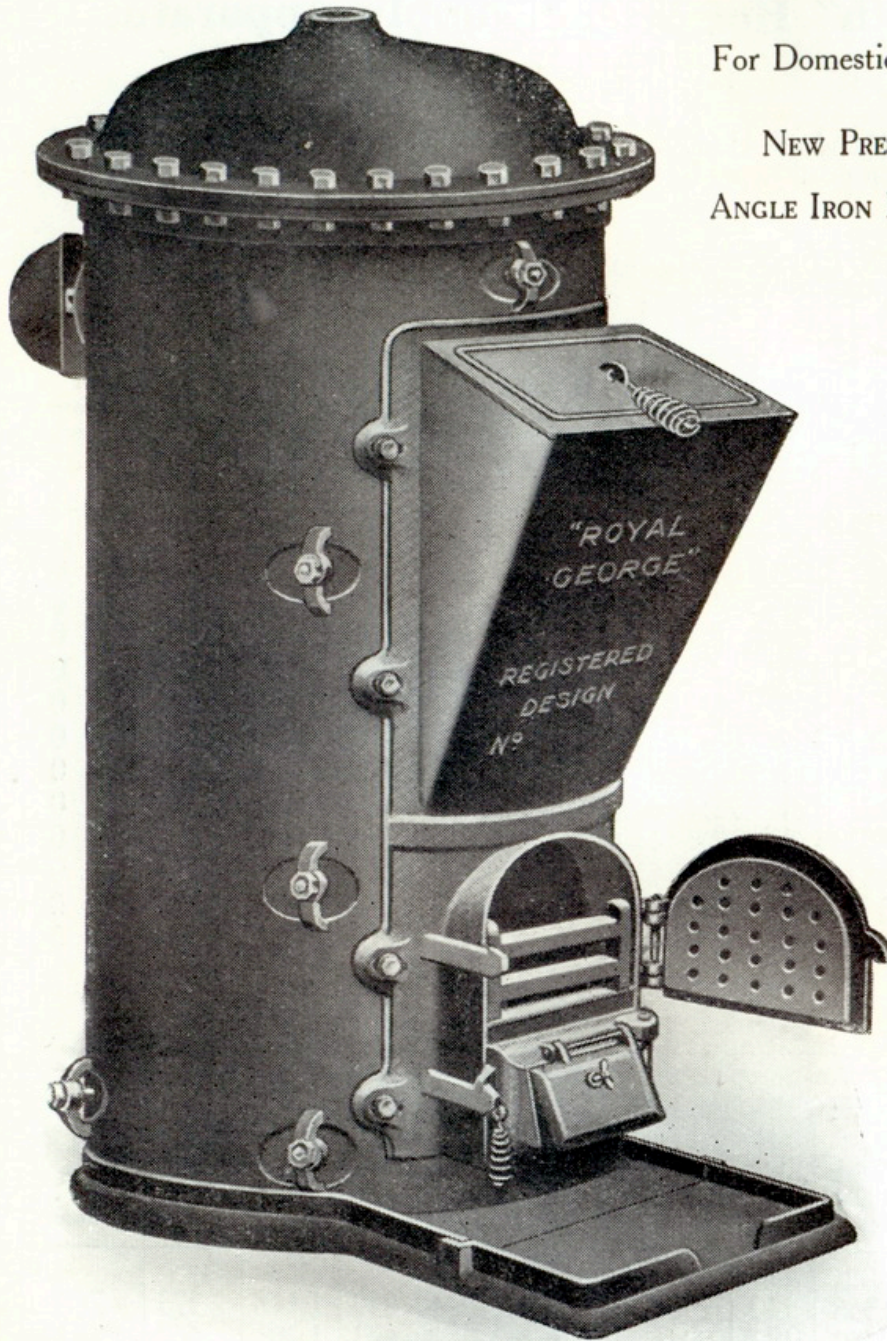
SECTION

Welded Independent Dome Top Boilers

For Domestic Hot Water Supply

NEW PRESSED STEEL TOP

ANGLE IRON FLANGE TURNED AND
FACED



The following Boilers can be supplied with Loose Bolted Tops, as illustrated — "Royal Goliath," "Royal" & "Royal George" Boilers.

The advantages of this arrangement are at once evident as it enables one to see the whole interior of the boiler and to clean out thoroughly all sediment, which greatly prolongs the life of the boilers.

Elevation showing one of our "ROYAL GEORGE" Boilers with new PRESSED STEEL Top Bolted on.