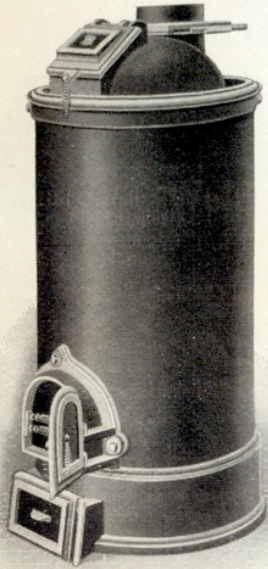
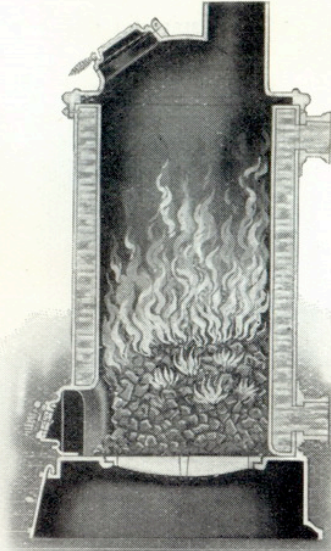


Welded "Victoria" Boiler

For Low-pressure Hot Water Heating



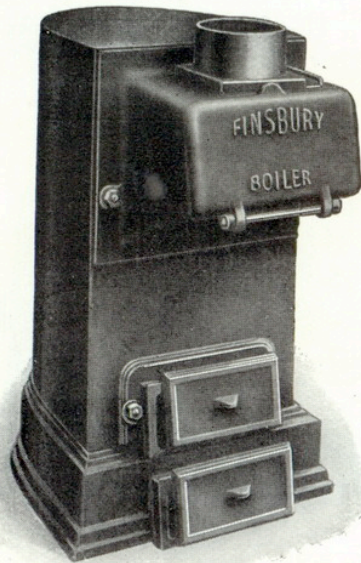
ELEVATION



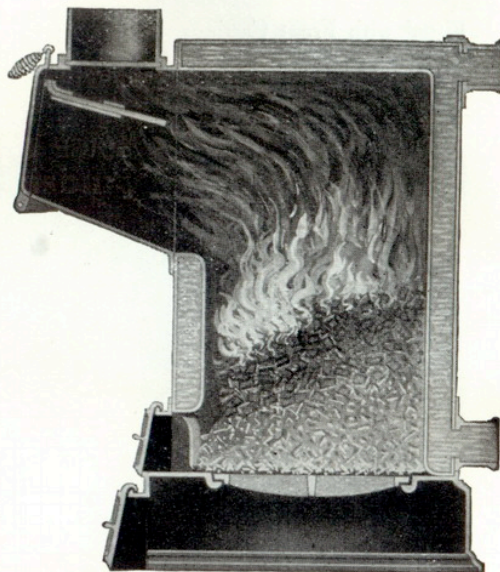
SECTION

Welded "Finsbury" Boiler

For Low-pressure Hot Water Heating
Fitted with New and Improved Smoke Flue Casting



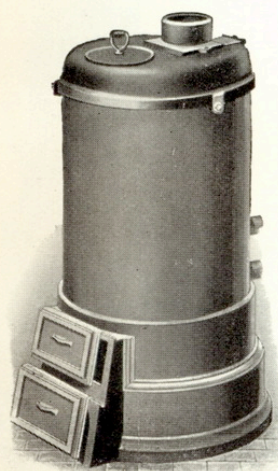
ELEVATION



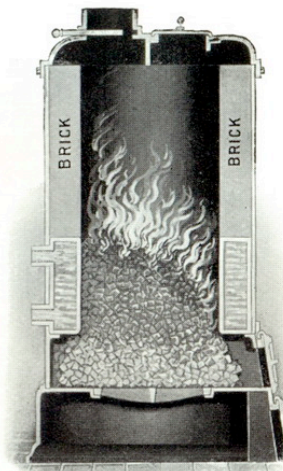
SECTION

Welded "Albion" Boiler

For Low-pressure Hot Water Heating
Will burn for 12 to 18 hours without attention



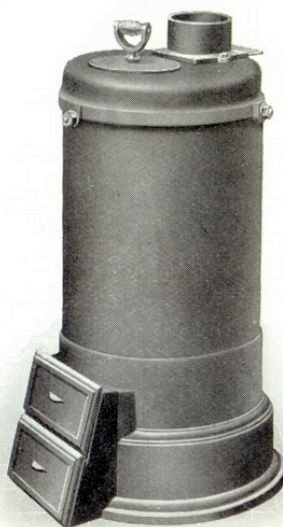
ELEVATION



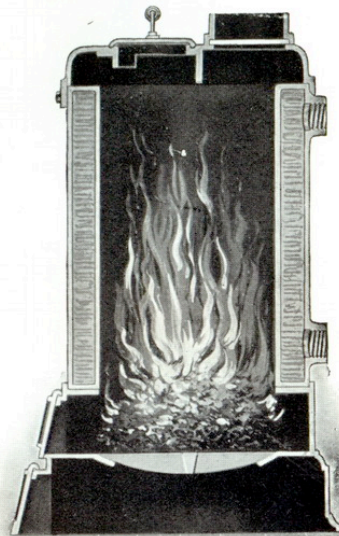
SECTION

Welded "Royal Star" Boiler

For Low-pressure Hot Water Heating
A splendid Boiler for your Residence or Garage



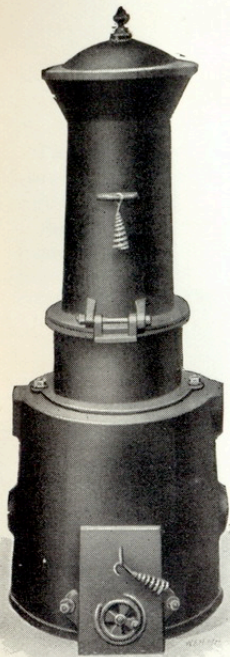
ELEVATION



SECTION

"Vigil" Boiler

For Hot Water Heating. Specially suitable for Greenhouses, Motor Houses, and Small Workshops.



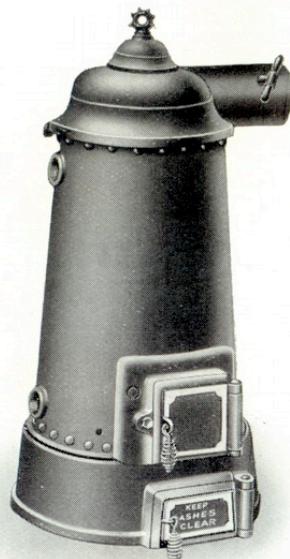
ELEVATION



SECTION

This Boiler has been specially designed to meet the demand for a cheap Boiler capable of maintaining the temperature and burning without attention for twelve hours. It is strong and well made in every part, is easy to stoke and clean, and guaranteed to be absolutely reliable. Suitable for any kind of small hot water heating apparatus. Smoke Flue, fitted with Slide Damper. Fuel Shield to prevent fuel lodging in Smoke Flue. Hinged Fall-down Feeder is a great boon to the boiler attendant.

Wrought Riveted Conical Boilers



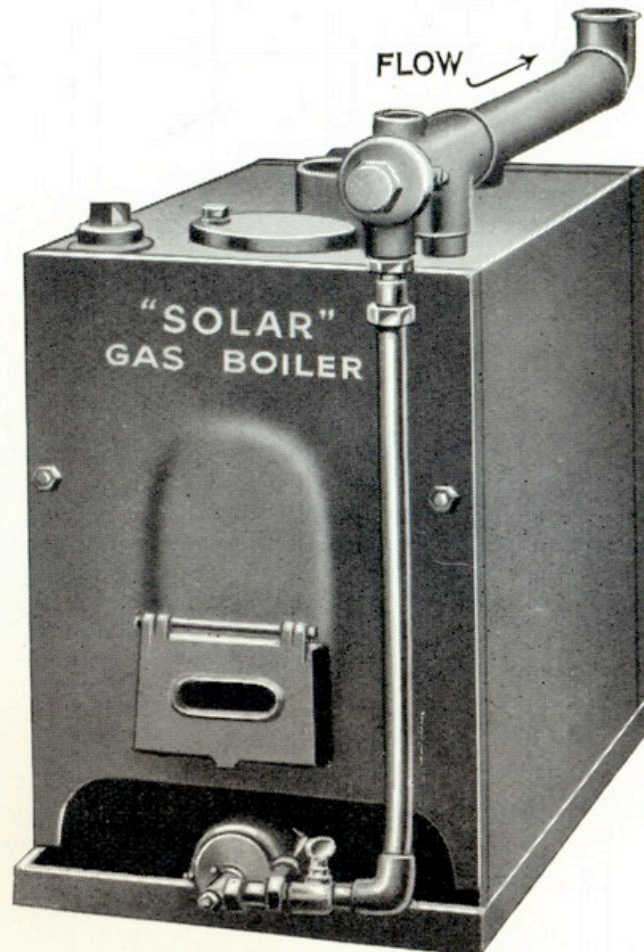
"Solar" Gas Boiler

Series 0

For Central Heating

For low-pressure hot water heating installations up to 180 sq. ft. These Heaters are especially suited for greenhouses and conservatories; or halls, staircases, and small suites of offices.

Automatic control is usually operated by Rod Thermostat on the flow pipe as illustrated. Alternatively, Air Thermostats can be supplied to regulate the gas consumption according to the temperature of the room, when the Boilers should be ordered with luminous jets.



"Solar" Sectional Gas Boilers Series 1

For Central Heating and Indirect Hot Water Supply



ELEVATION

Painted or mottled enamelled finish

Thermostatically controlled

All waterways insulated to prevent loss of heat

Flueways accessible for easy cleaning

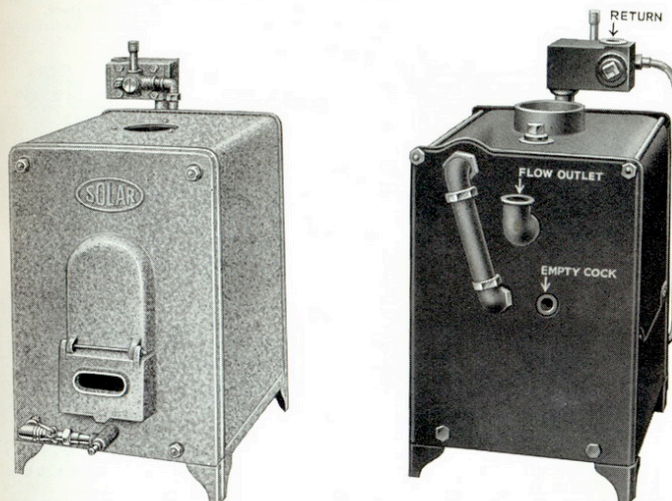
Flueways of correct proportions are accessible for cleaning "in situ" by the removal of the front plate, which exposes the whole of the interior, reducing maintenance costs to a minimum.

Prices below include Base Tray, Thermostat with regulating handle to vary the temperature of the water at which the gas is continuously controlled, Flue Baffle, and Insulating Jacket, all as illustrated, also including Gas Pressure Governor (not shown).

"Solar" Gas Boiler Series O1

For Direct Hot Water Supply

These Boilers are for attachment as heating units to hot water storage vessels, providing the utmost flexibility of adjustment for the purpose of operating towel rails, airing coils, etc. **Fitted with patent Bi-metal Thermostat and luminous burners** they are capable of regulation to a low by-pass consumption of 2 cu. ft. per hour for the maintenance of heat in a lagged set.

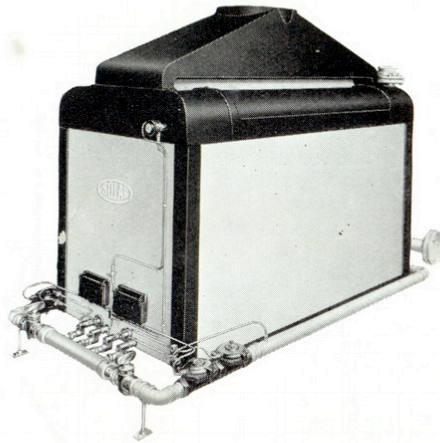


"Solar" Sectional Gas Boilers Series 3

For Central Heating and Indirect Hot Water Supply

Painted or mottled enamelled finish
All waterways insulated to prevent loss of heat
Flueways of correct proportions are accessible for cleaning "in situ" by the removal of the front plate which exposes the whole of the interior, reducing maintenance costs to a minimum.

Thermostatically controlled
Flueways accessible for easy cleaning



ELEVATION

Prices include Base Tray, Thermostat with regulating handle to vary the temperature of the water at which the gas is continuously controlled, Flue Baffle, Insulating Jacket, and Gas Pressure Governor. Tappings also provided for Safety Valve and D.O. Cock.

"Solar" Sectional Gas Boilers For Direct Hot Water Supply Series D

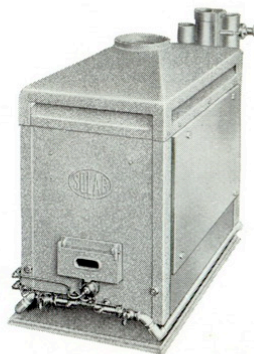
A Sectional Boiler for Direct Hot Water Supply Installations requiring outputs of over 70 gallons per hour at 130° F.

Flueways are accessible for cleaning *in situ* by the removal of the front plate, which exposes the whole of the internal gasways, and the side plates are removable exposing the mudhole covers for access to the interior waterways.

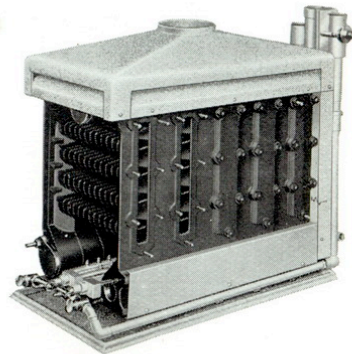
Mudholes are provided on both sides of each section to facilitate cleaning cross-tubes, with additional mudhole on the front of each of the three portholes.

Thermostats are of our standard Bi-metal type, and where not otherwise ordered are fitted on the return extended to the top of the Boiler, but low-level returns can be fitted where necessary.

All burners are fitted with gas-adjusting screws and pressure test points, and a Gas Governor is supplied with each Boiler.



ELEVATION—Showing Automatic Cut-off



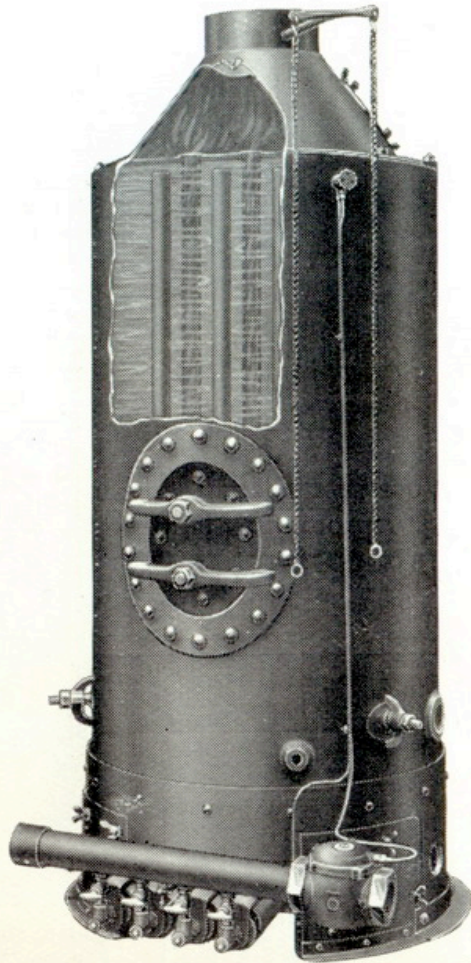
5 Section Boiler showing Plates removed for cleaning Waterways and Flues

Prices include Base Tray, Thermostat, Flue Baffle and Insulated Jacket, all as illustrated, also Gas Pressure Governor (not illustrated).

LUMBY'S BOILERS

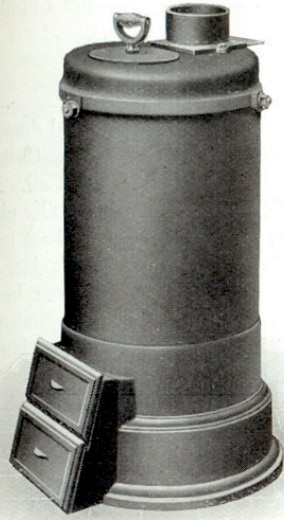
Gas Fired Boiler for Hot Water Heating

Constructed from Mild Steel Plates Fitted with Vertical Tubes
Tested to 50 lb. Hydraulic Pressure

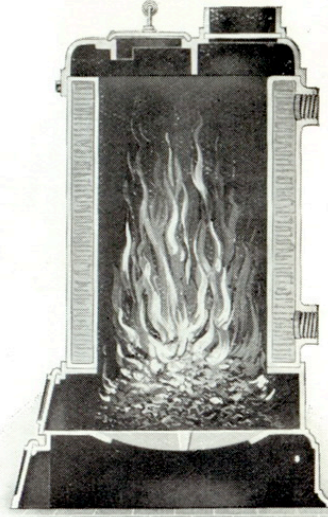


L & L LUMBYS BOILERS L & L

Copper "Royal Star" Boiler



ELEVATION



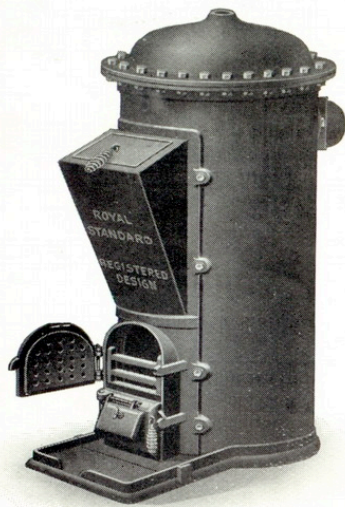
SECTION

L & L LUMBYS BOILERS L & L

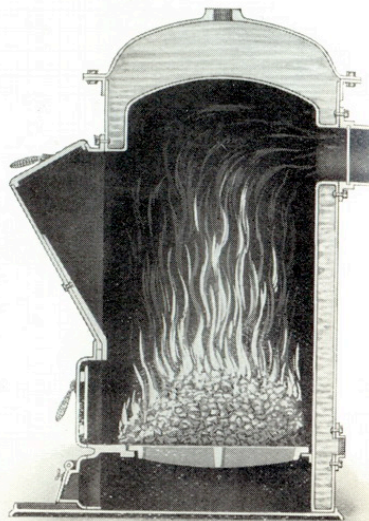
Copper "Royal Standard" Boiler

For Hot Water Supply Service

Registered Design 603772



ELEVATION



SECTION