

# **WARNER MOVIE THEATRES**

**TEN STILL OPEN IN THE USA & ONE IN UK**

**2020**

## **PART FOUR BUILDING SERVICES ENGINEERING**

**CIBSE HERITAGE GROUP**

# WARNER THEATRES

TEN STILL OPEN IN THE USA & ONE IN UK

## PART FOUR

Dates are when operated by Warner  
Seating capacity after name

1928 Warner, Washington, DC 1850

1928 Winter Garden, New York, NY 1533

1929 Beacon, New York, NY 3154

1929 Warner, Fresno, CA 2169

1931 Lerner, Elkhart, IN 2063

1931 Powers Auditorium,  
Youngstown, OH 2303

1931 Warner, Erie, PA 2506

1931 Warner, Torrington, CT 1850

1931 Warner Grand, San Pedro, CA 1598

1932 Bow-Tie Warner,  
Ridgewood, NJ 1750

1938 Warner, London, UK 1789



# **WARNER WASHINGTON**

**Also known as EARLE**

**OPENED** 1928

**SEATING CAPACITY** 1850

**OPERATOR** Stanley-Warner

**ARCHITECT** Crane & Franzheim

**LIGHTING**



## Warner, Washington DC



Designed for the Brylawski organization by C. Howard Crane and Kenneth Franzheim, the Earle Theater (501–515 Thirteenth Street NW, 1924–present) shows off its spectacular facade in 1944, a few years before Harry Warner changed its name to the Warner. Severe construction difficulties resulted in the theater being taken over by the Stanley Company before it opened in December 1924. The Earle seated just over 2,000 people and featured vaudeville and movies. After several years of generally forgettable films and stage shows, the theater was sold to the Kaempfer organization, which restored and reopened it for live theater in October 1992.

(Movie Theatres of Washington, DC)



# Warner, Washington DC

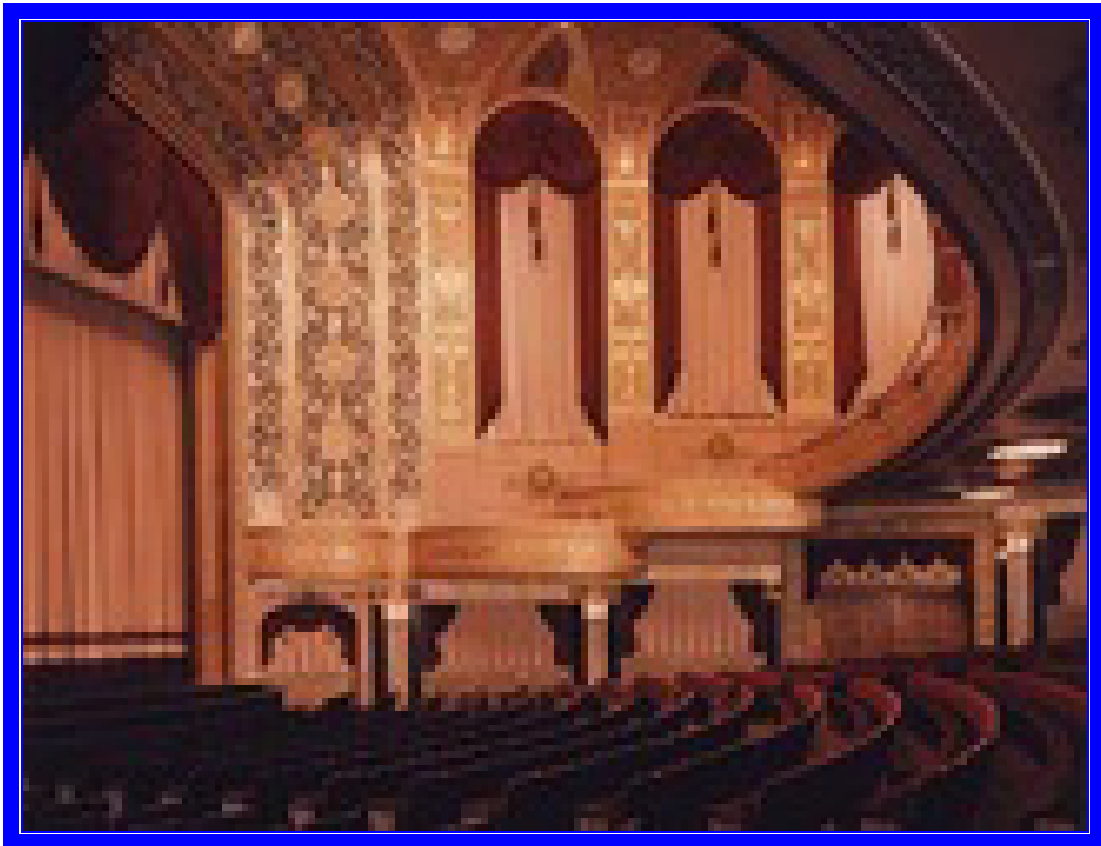


## Warner, Washington DC





## Warner, Washington DC





# WINTER GARDEN NEW YORK

**OPENED** 1928

**SEATING CAPACITY** 1533

**OPERATOR** Warner

**ARCHITECT** Krapp & Swasey

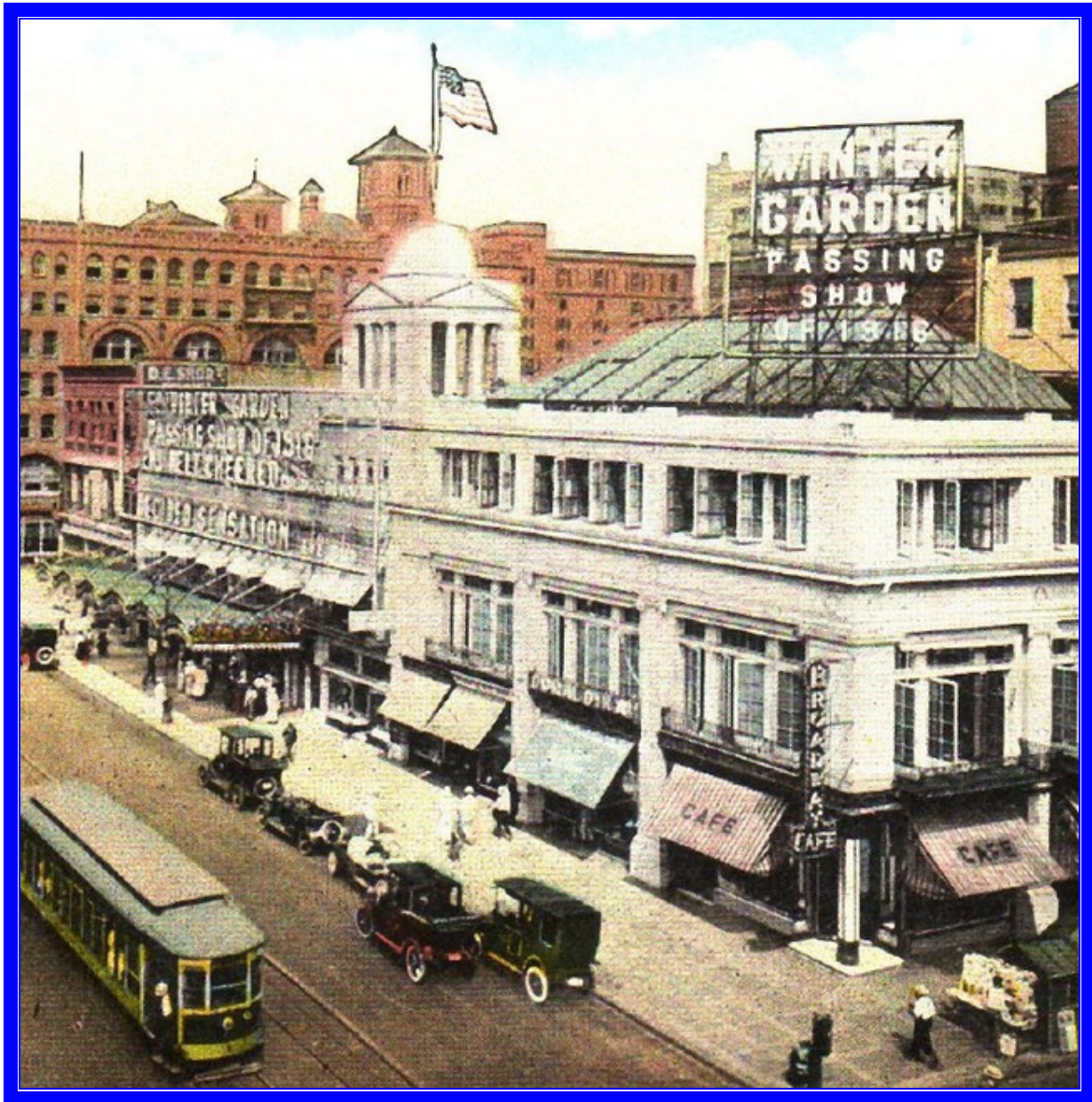
**LIGHTING**

**HVACR**

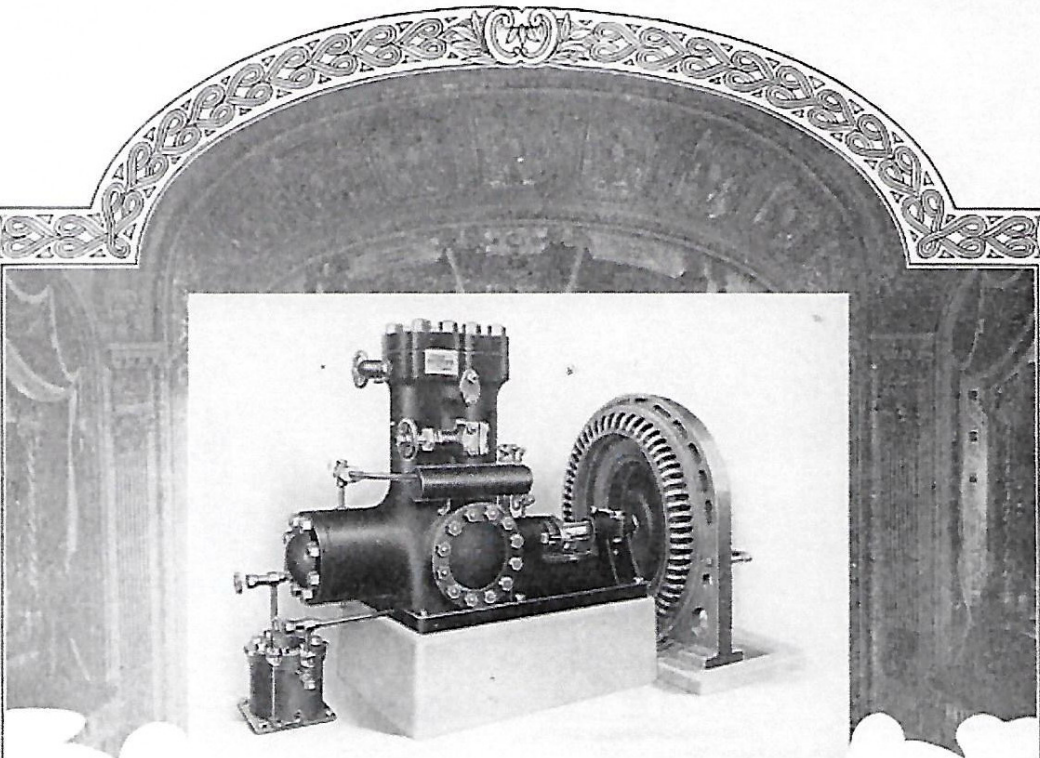
**York Ice Machinery Corporation  
CO<sub>2</sub> Machine**



# Winter Garden, New York City







# Cool Your Theatre!

*Let the world's largest Organization of Refrigerating Engineers guarantee your results*

You can count on increased box-office receipts during those five months of torrid summer weather—more profitable business than during winter.

Your townfolks will flock to your theatre as a haven of relief—for a really enjoyable two or three hours. The World's Largest Organization of Refrigerating Engineers, specializing in all applications of mechan-

ically produced refrigeration, stands ready to guarantee to make your theatre cool, comfortable and inviting during the hottest weather.

The York Manufacturing Company commands your confidence—backed by years of success in controlling temperature under every condition, the world over.

There is a service branch of the York Manufacturing Company in your territory. Mail the attached coupon and one of our engineers will gladly and without obligation on your part, consider your problems.

**MAIL THIS COUPON**

YORK MFG. CO.,  
York, Pa.

The subject of controlled temperatures for theatres is of interest to me. Please have one of your Engineers discuss this with me. There is no obligation on my part.

Name of Theatre \_\_\_\_\_

Address \_\_\_\_\_

Signed by \_\_\_\_\_

**YORK** Manufacturing  
Company  
York, Penna.



# Winter Garden, New York City



# Winter Garden, New York City





## Winter Garden, New York City





# Winter Garden, New York City





## **BEACON NEW YORK**

**OPENED** 1929

**SEATING CAPACITY** 3154

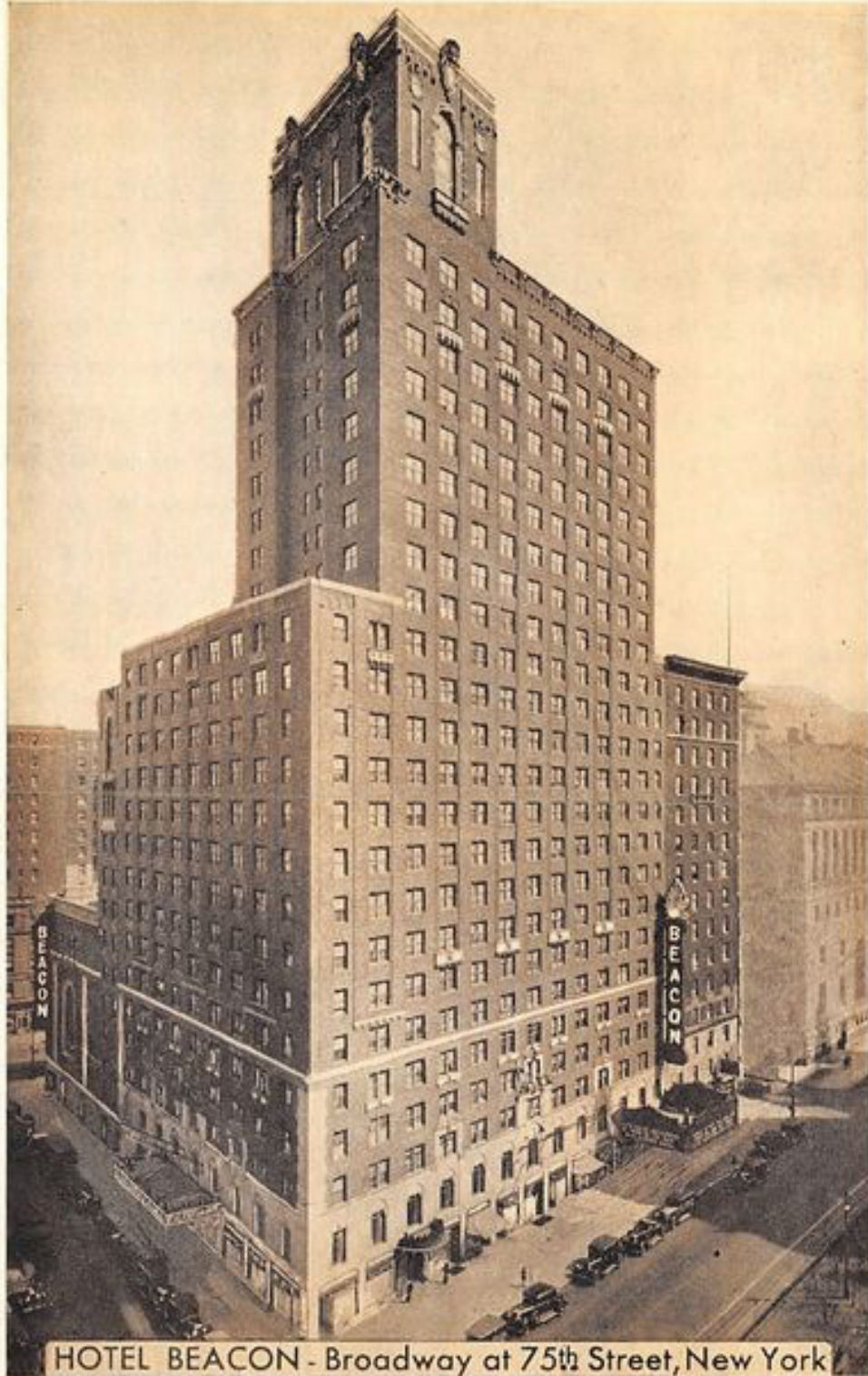
**OPERATOR** Warner

**ARCHITECT** W W Ahlschlager

**LIGHTING**

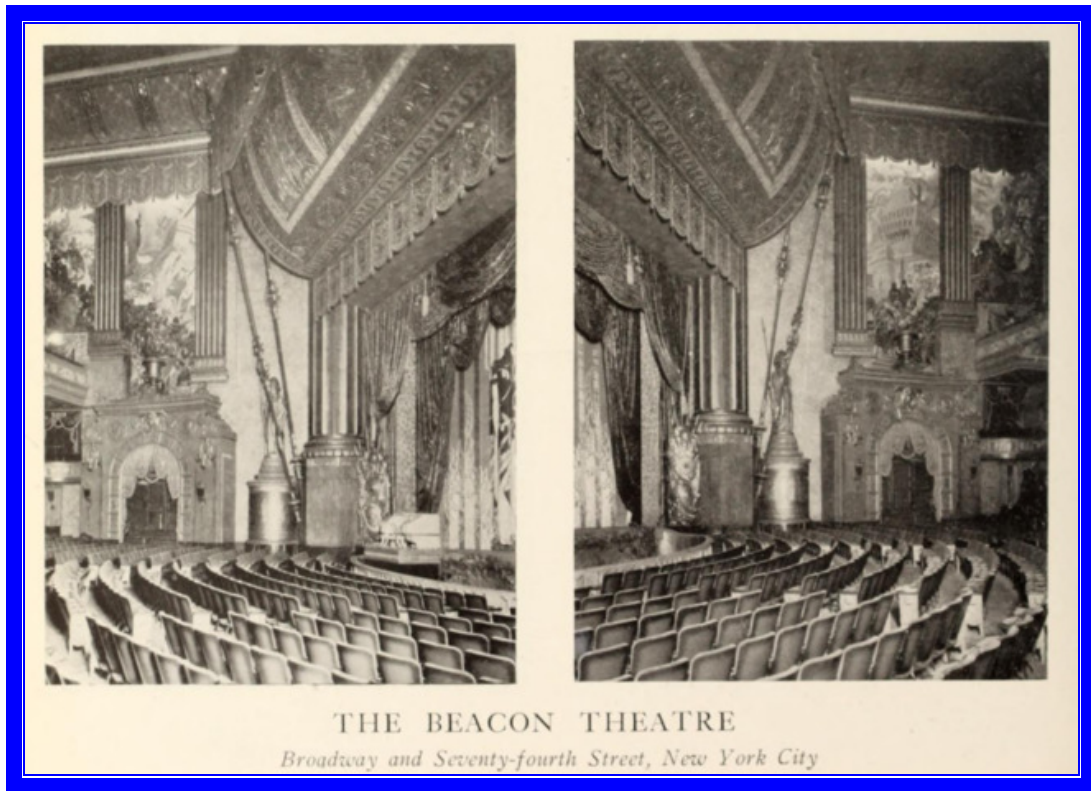


## Beacon, New York City





# Beacon, New York City





# Beacon, New York City





## Beacon, New York City



## Beacon, New York City





## Beacon, New York City



## Beacon, New York City







# **WARNER FRESNO**

## **Opened 1928 as Pantages**

**OPENED 1929**

**SEATING CAPACITY 2169**

**OPERATOR Warner**

**ARCHITECT B Marcus Priteca**

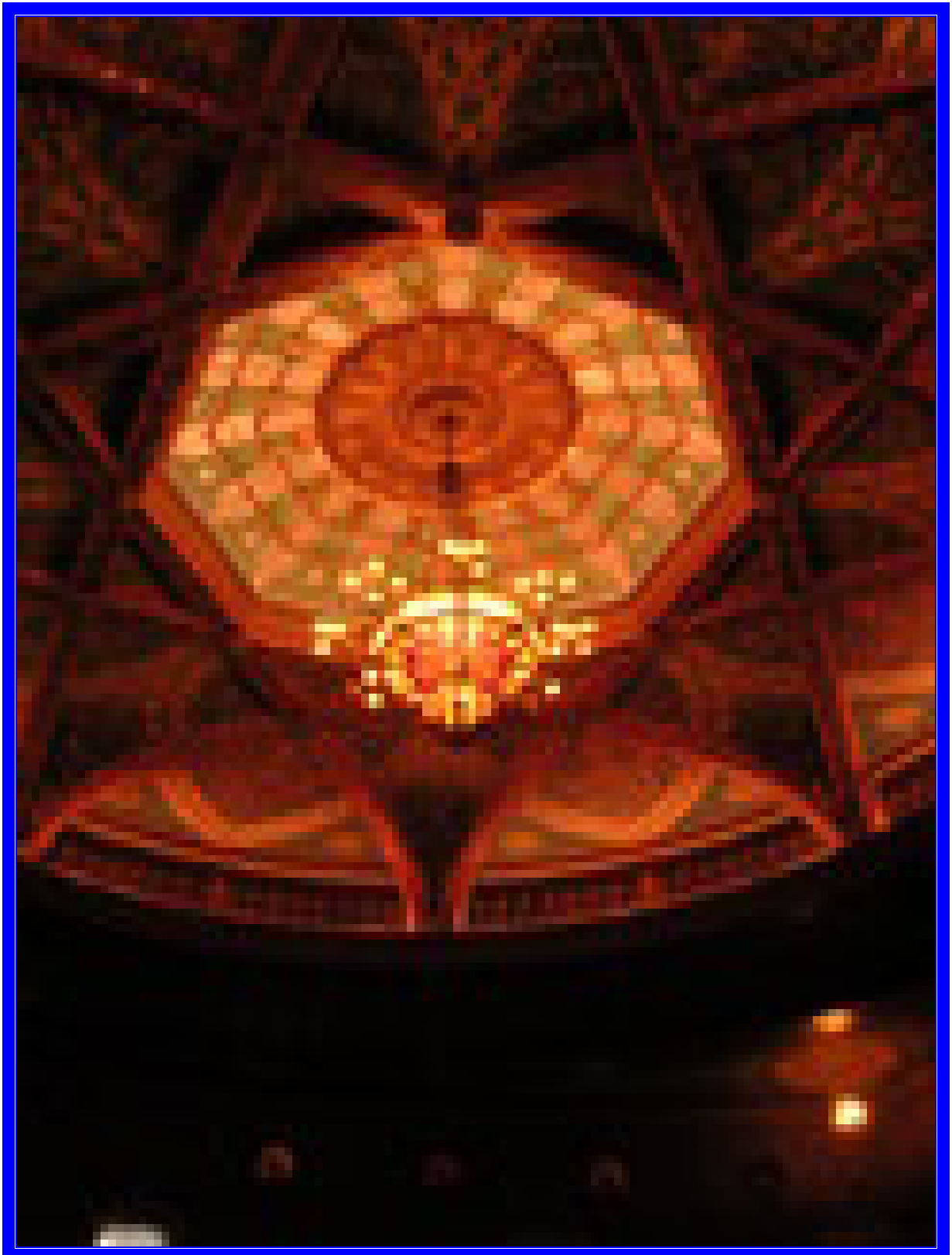
**LIGHTING**

# Warner, Fresno, California

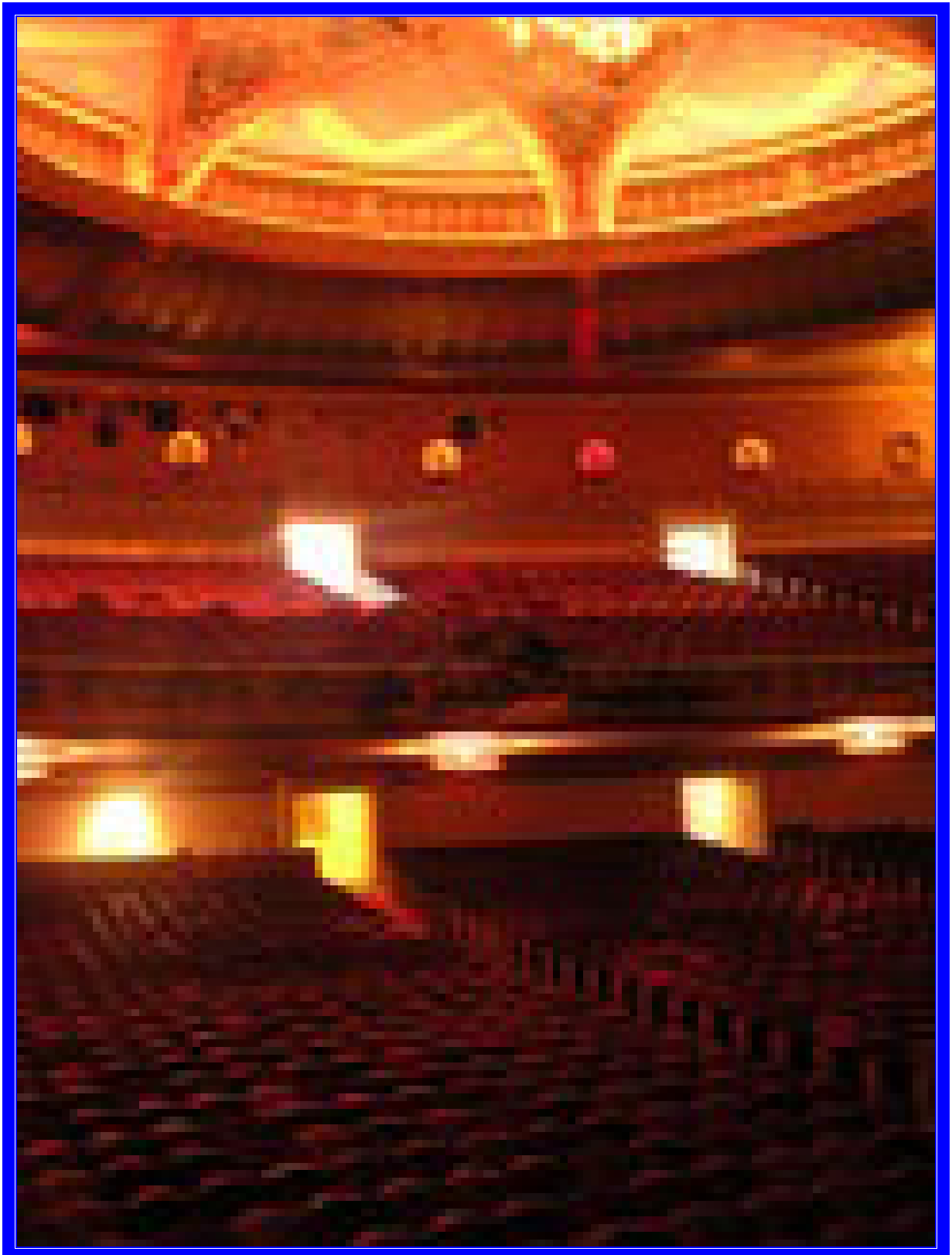




## Warner, Fresno, California

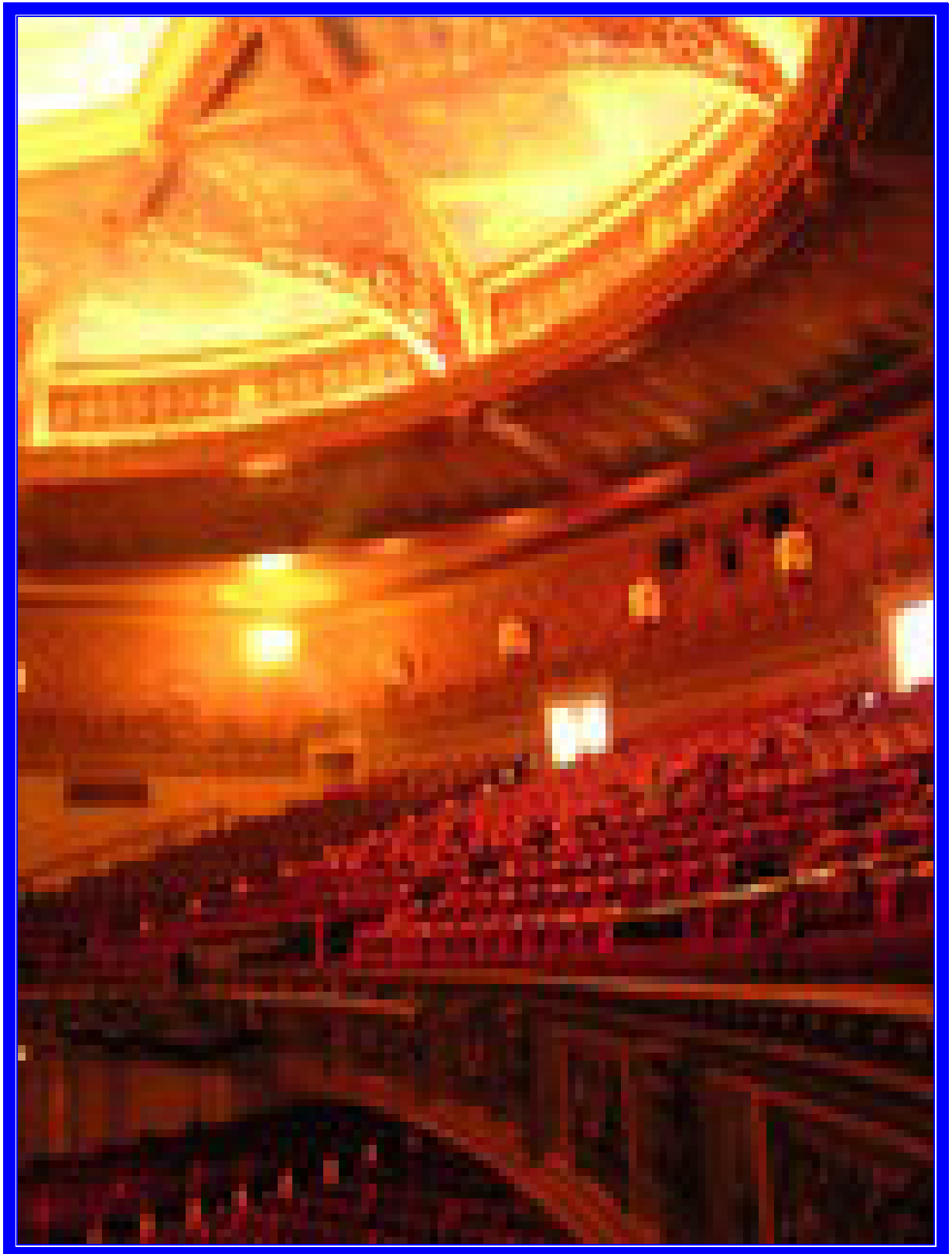


## **Warner, Fresno, California**

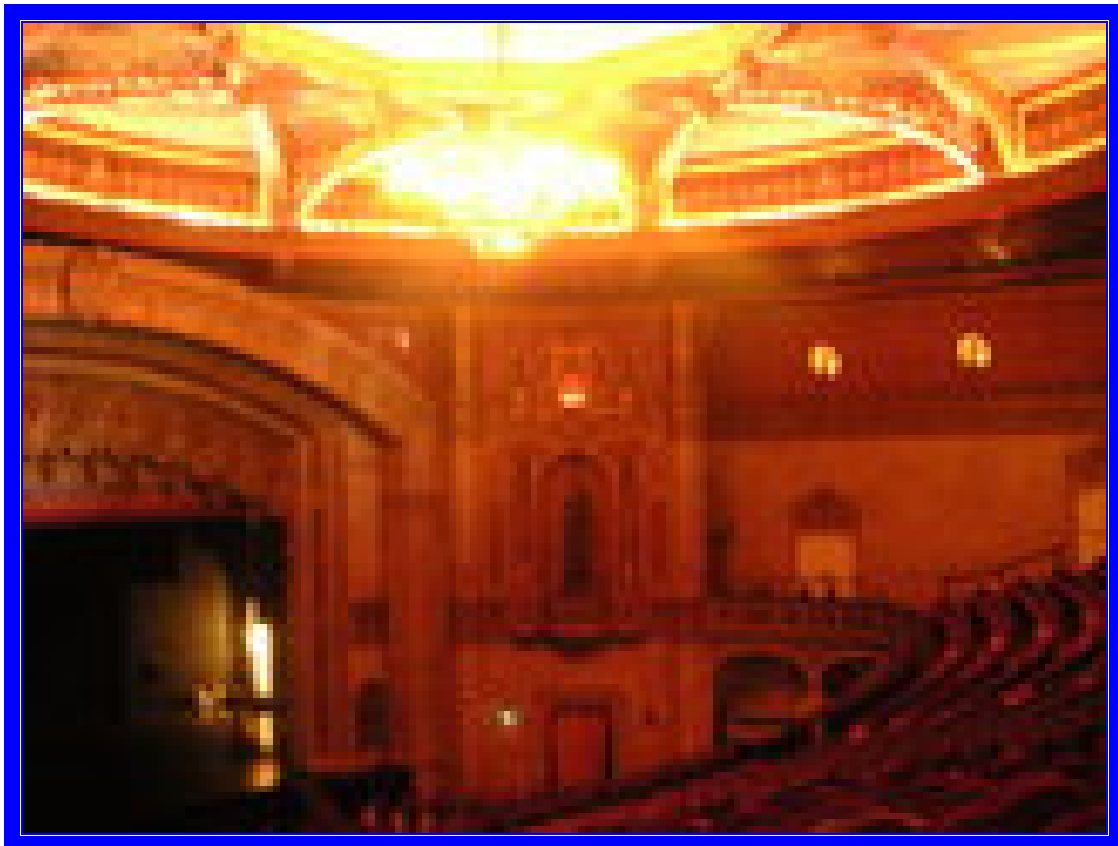




# Warner, Fresno, California



## Warner, Fresno, California







# **LERNER ELKHART**

**OPENED 1931**

**SEATING CAPACITY 2063**

**OPERATOR Warner**

**ARCHITECT Vitzhum & Burns**

**LIGHTING**

# Lerner, Elkhart, Indiana





## Lerner, Elkhart, Indiana



## Lerner, Elkhart, Indiana







# POWERS AUDITORIUM YOUNGSTOWN

**OPENED** 1931

**SEATING CAPACITY** 2303

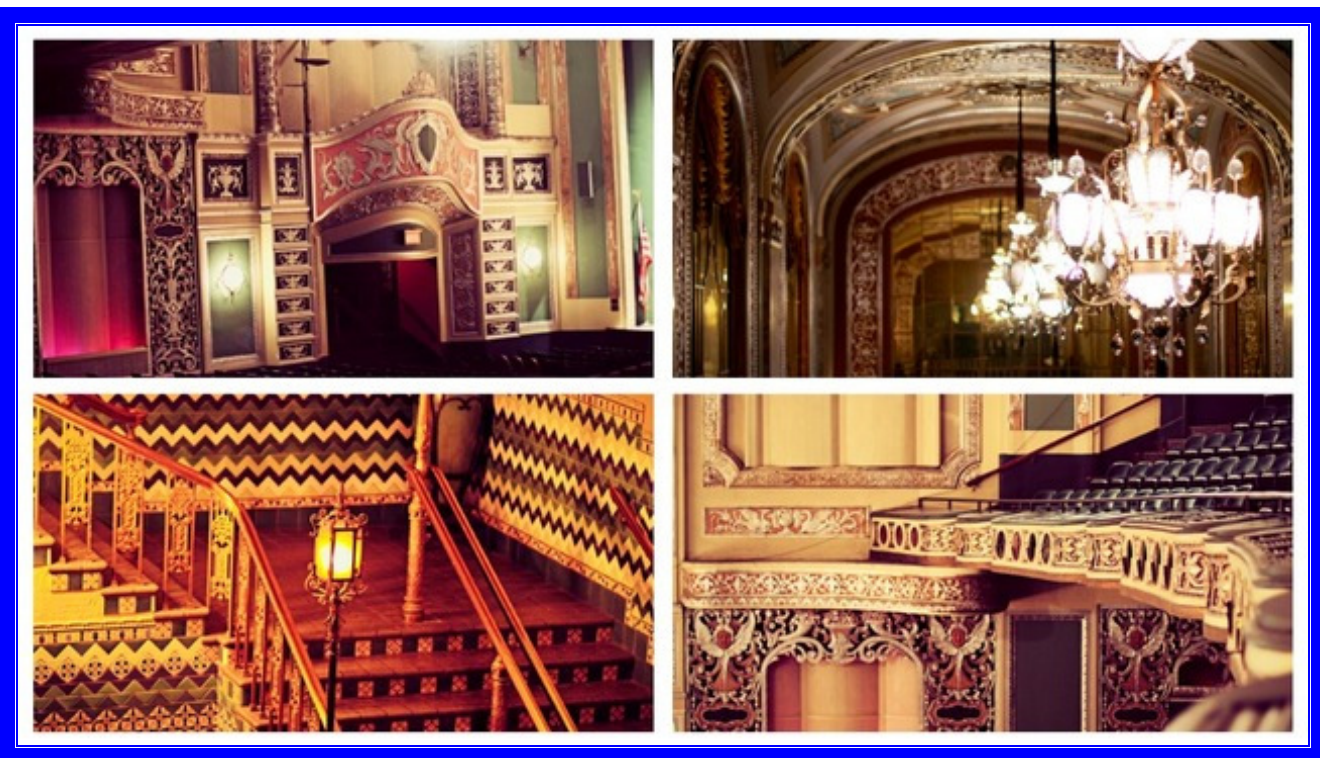
**OPERATOR** Warner

**ARCHITECT** Rapp & Rapp

**LIGHTING**

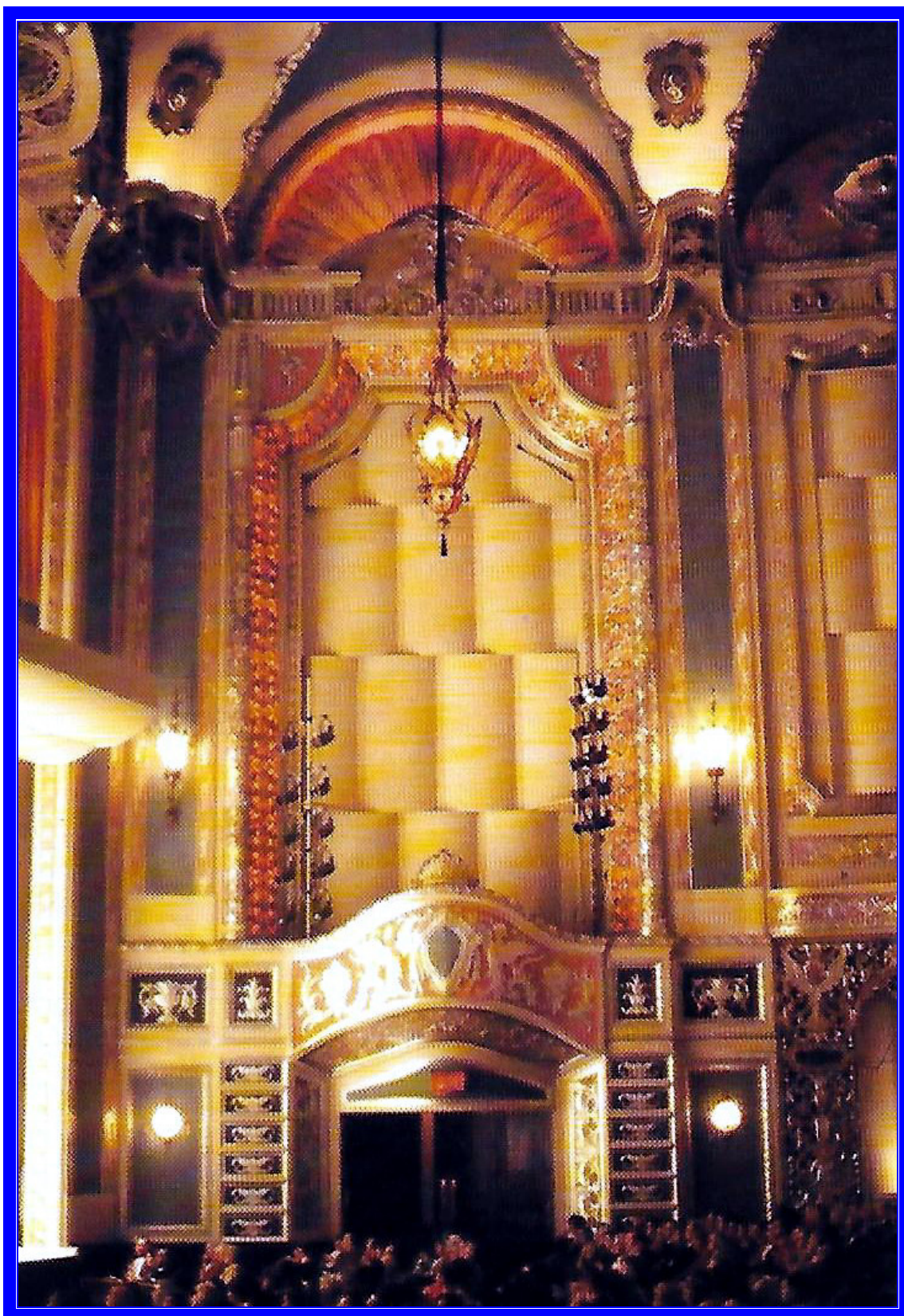


# Powers Auditorium, Youngstown, Ohio





## **Powers Auditorium, Youngstown, Ohio**



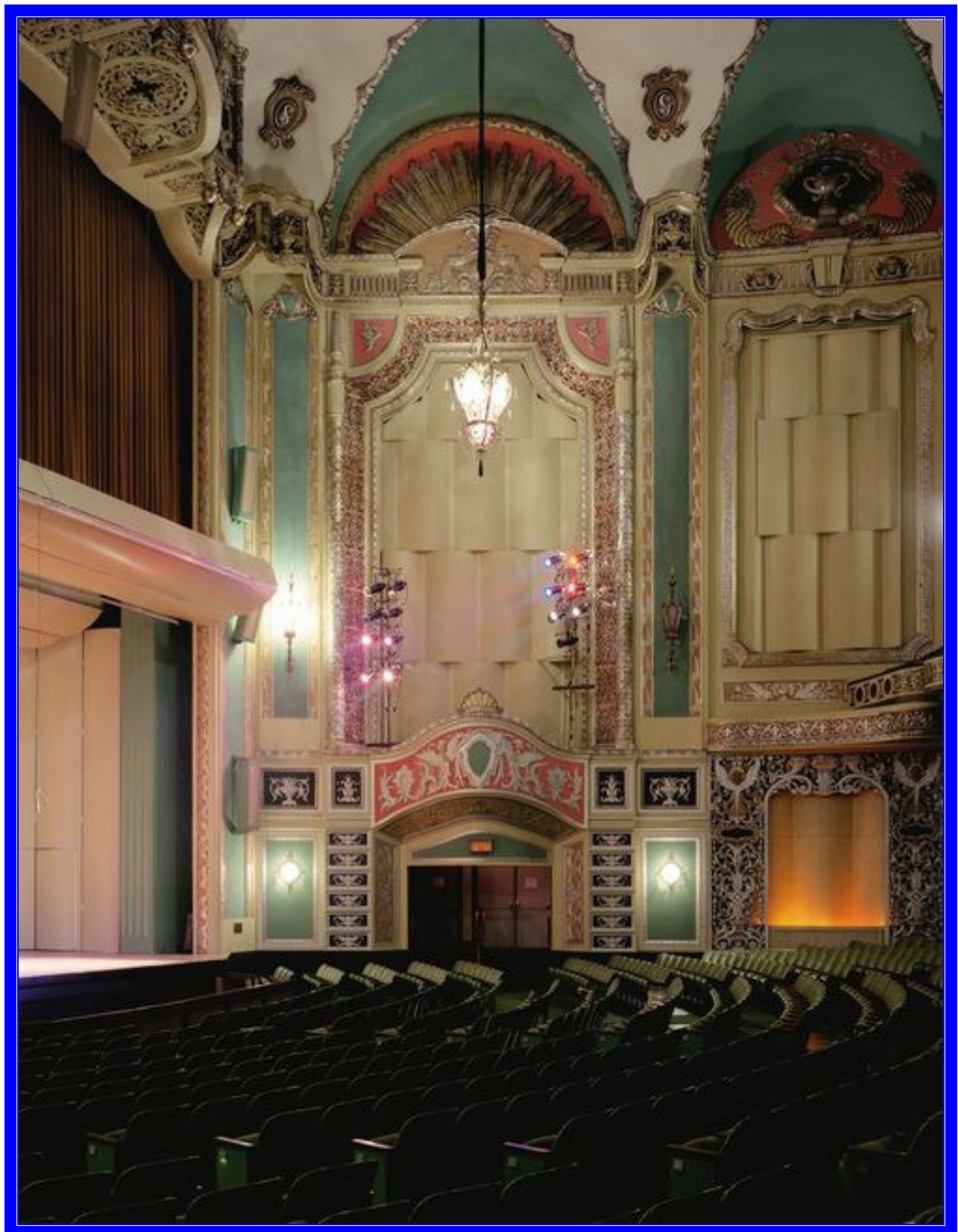


# Powers Auditorium, Youngstown, Ohio



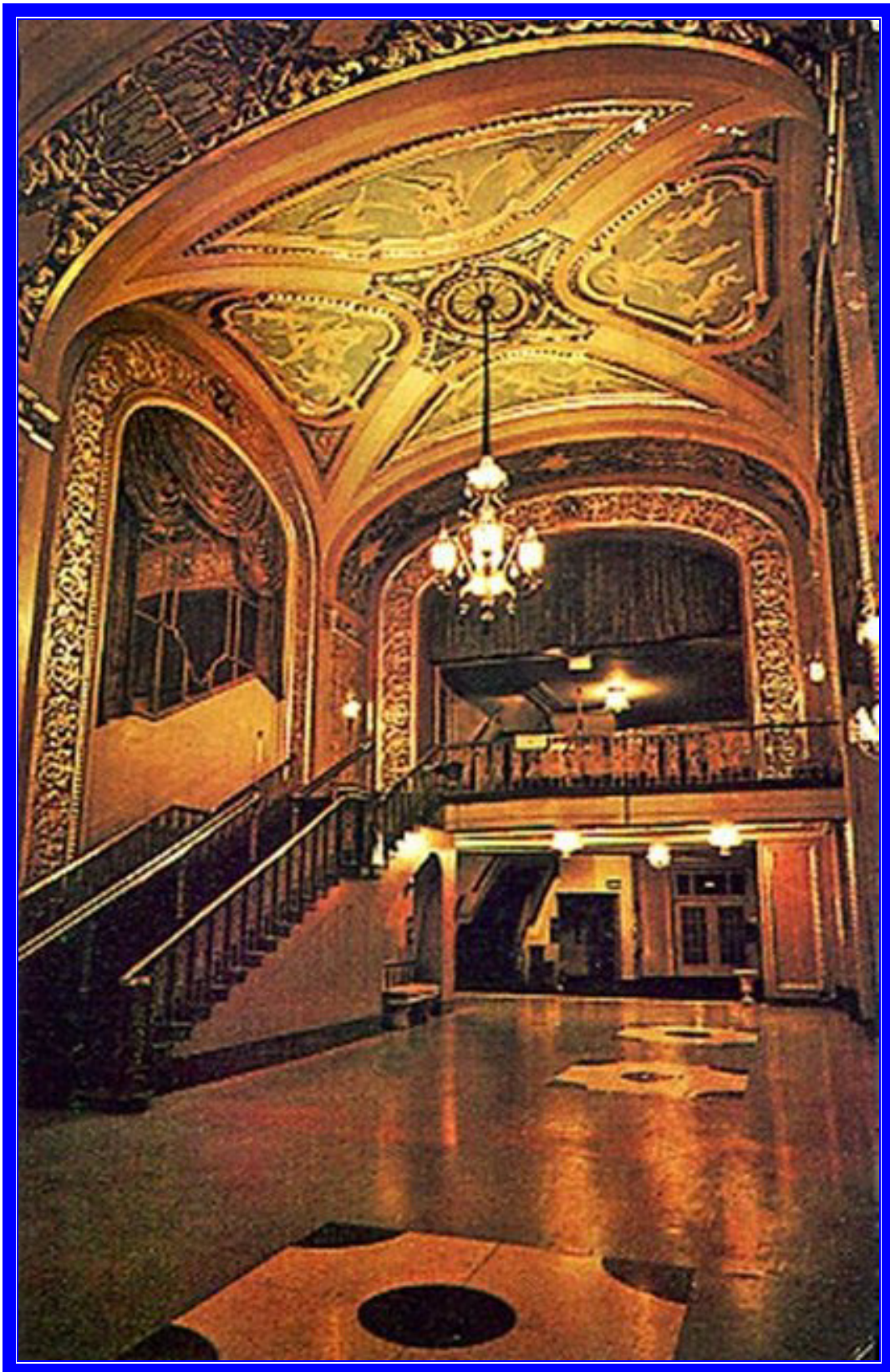


# Powers Auditorium, Youngstown, Ohio



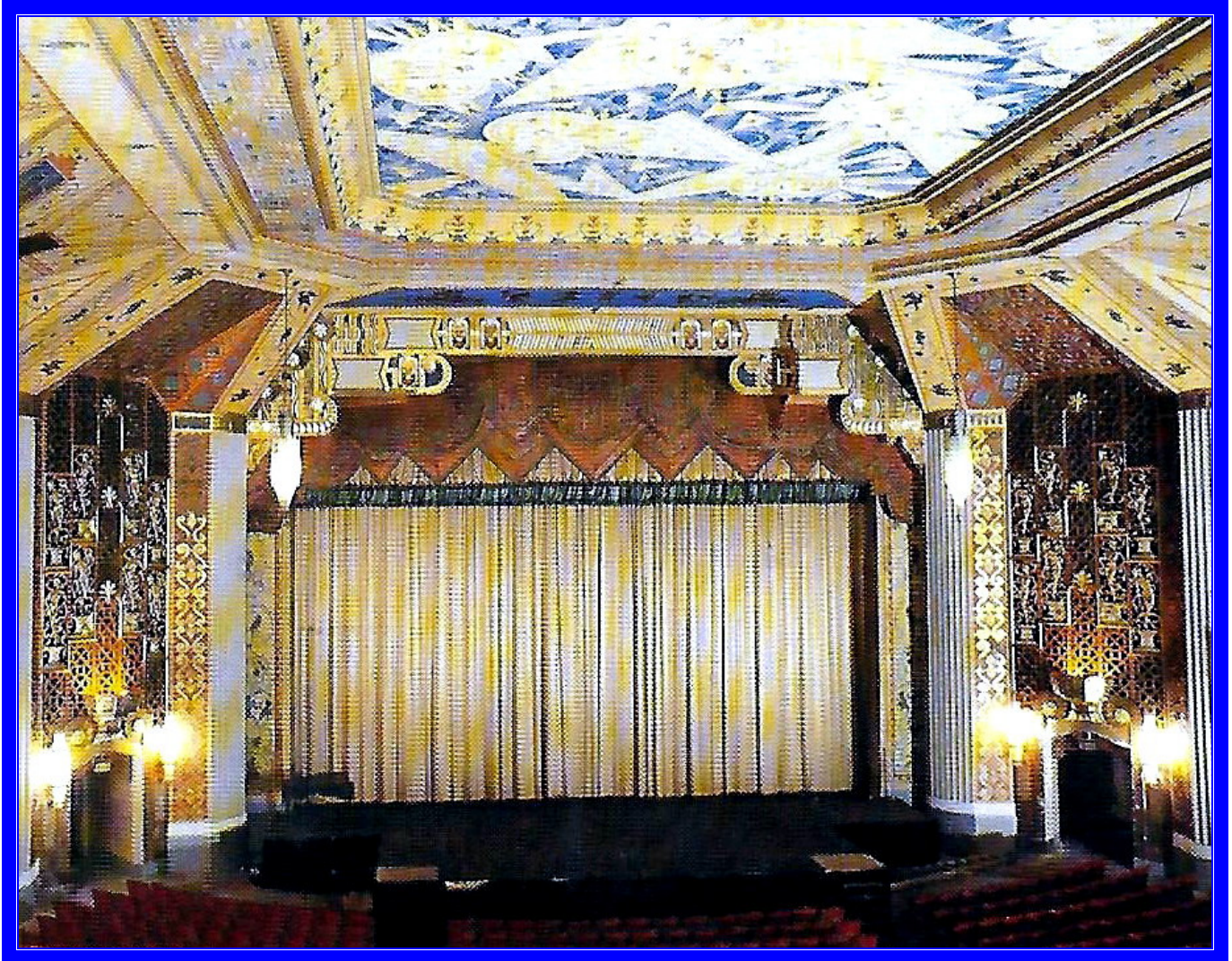


# **Powers Auditorium, Youngstown, Ohio**





# Powers Auditorium, Youngstown, Ohio



(The Last Remaining Seats)





# **WARNER ERIE**

**OPENED** 1931

**SEATING CAPACITY** 2506

**OPERATOR** Warner

**ARCHITECT** Rapp & Rapp

**LIGHTING**

# Warner, Erie, Pennsylvania





# Warner, Erie, Pennsylvania



(American Picture Palaces)



# Warner, Erie, Pennsylvania





# Warner, Erie, Pennsylvania





Main Street, Torrington, Conn.



# **WARNER TORRINGTON**

**OPENED** 1931

**SEATING CAPACITY** 1850

**OPERATOR** Warner

**ARCHITECT** Thomas White Lamb

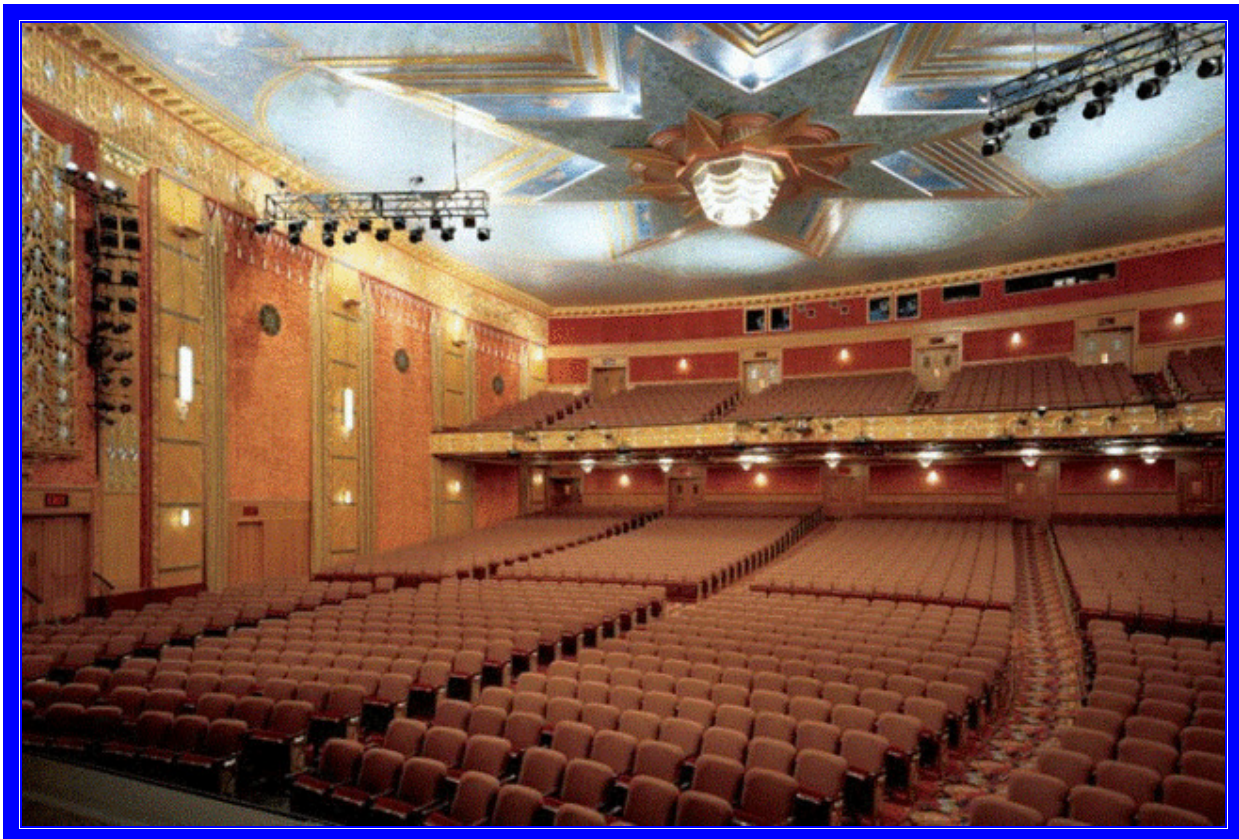
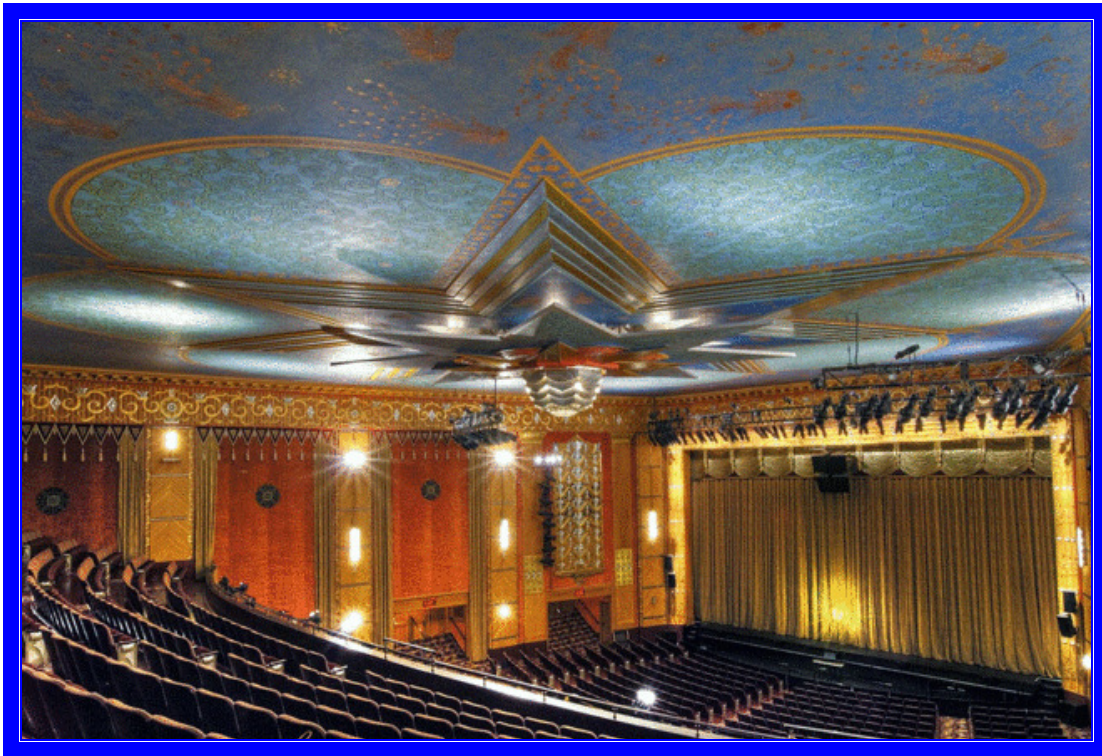
**LIGHTING**

## Warner, Torrington, Connecticut





# Warner, Torrington, Connecticut





# Warner, Torrington, Connecticut







# **WARNER GRAND SAN PEDRO**

**OPENED** 1931

**SEATING CAPACITY** 1598

**OPERATOR** Warner

**ARCHITECT** B Marcus Priteca

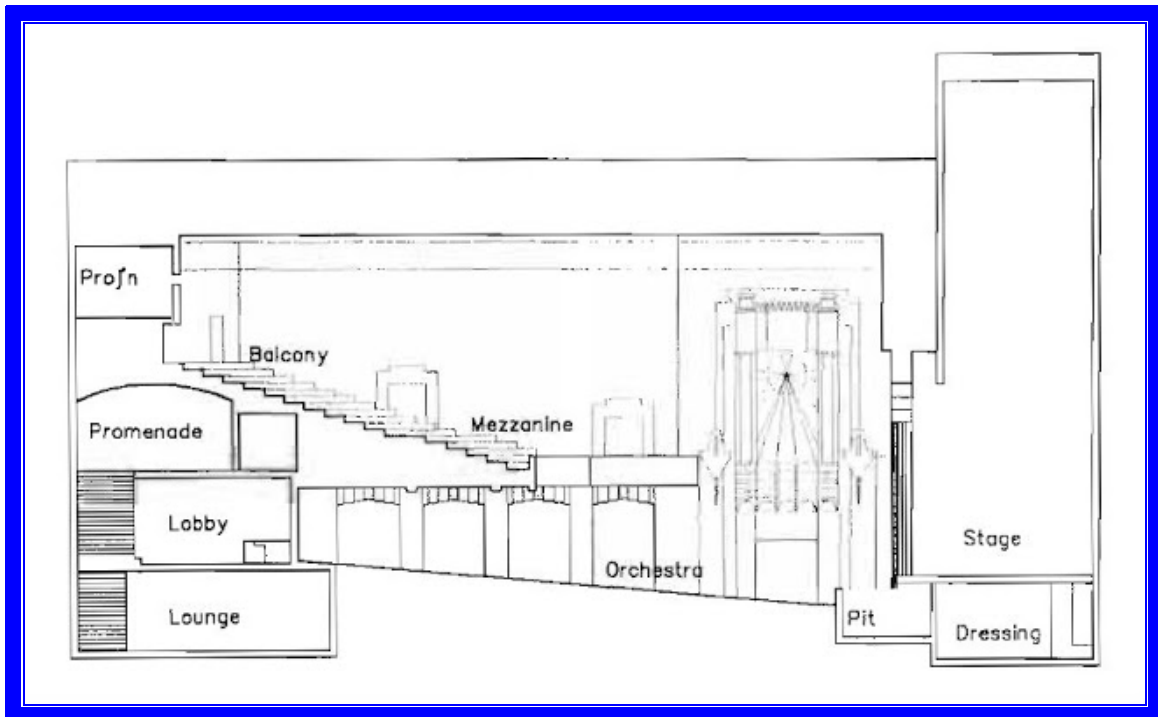
**LIGHTING**

# Warner Grand, San Pedro, California

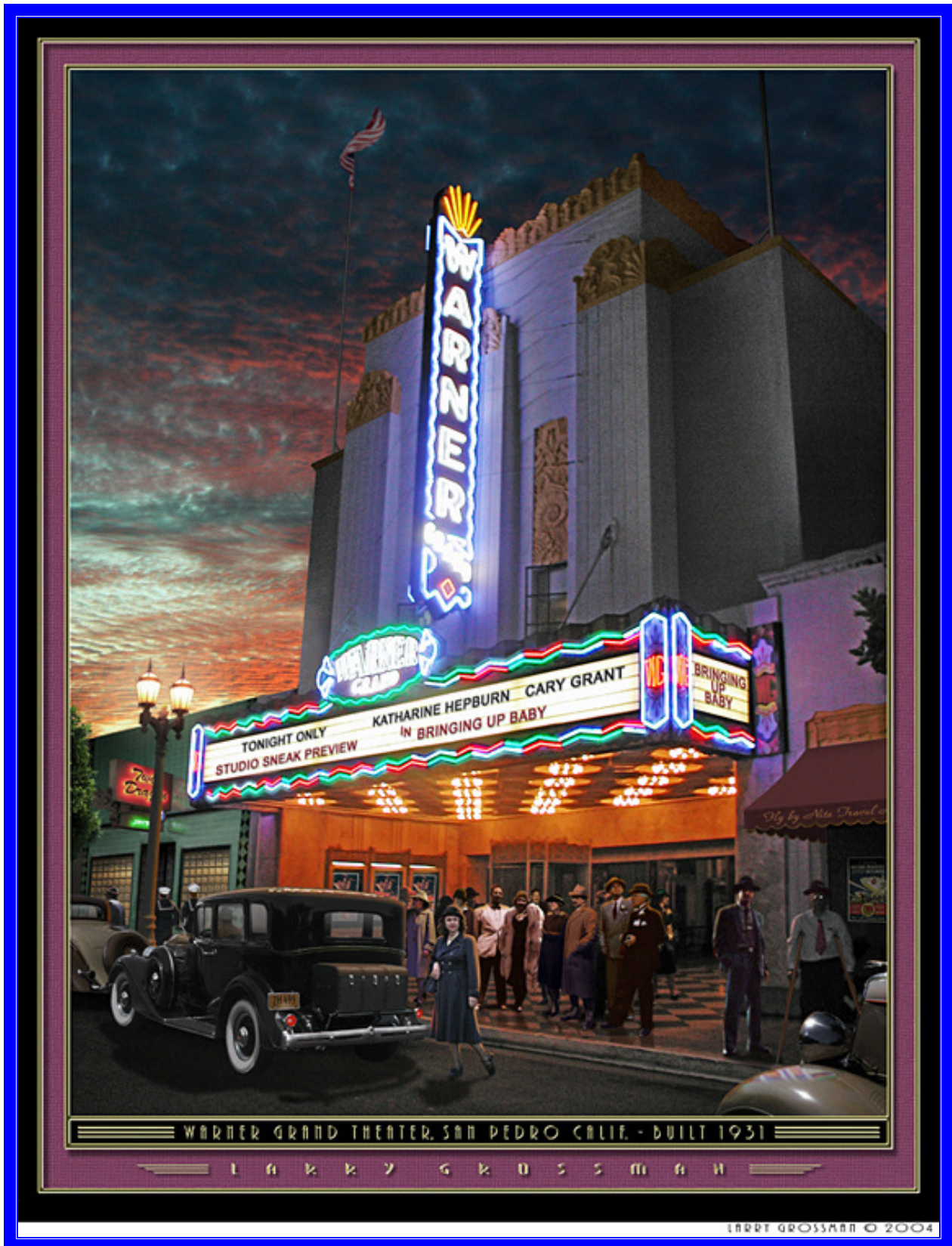




# Warner Grand, San Pedro, California

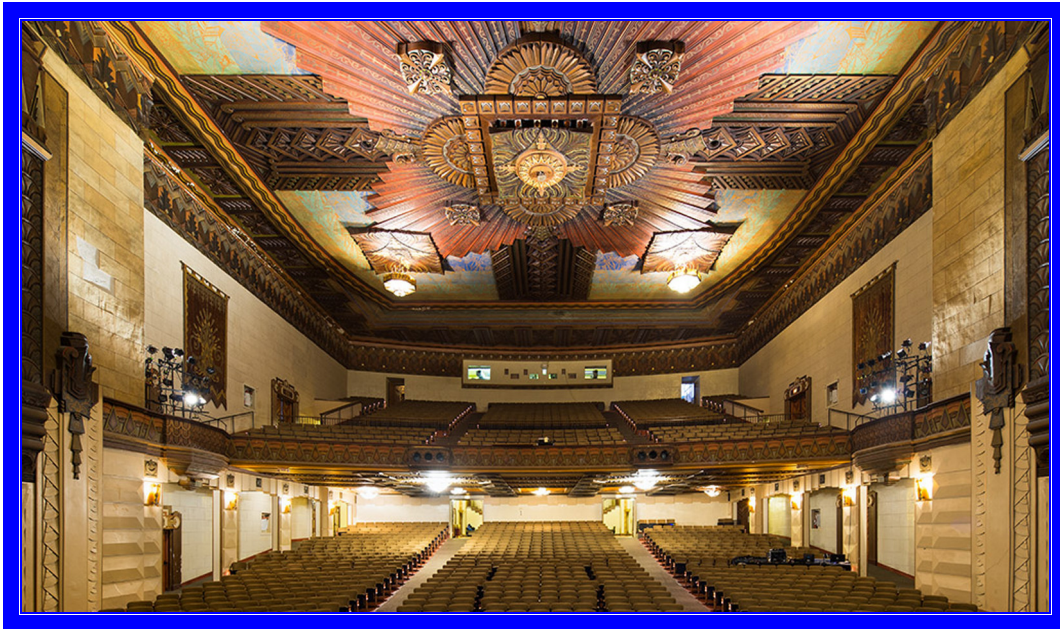


# Warner Grand, San Pedro, California





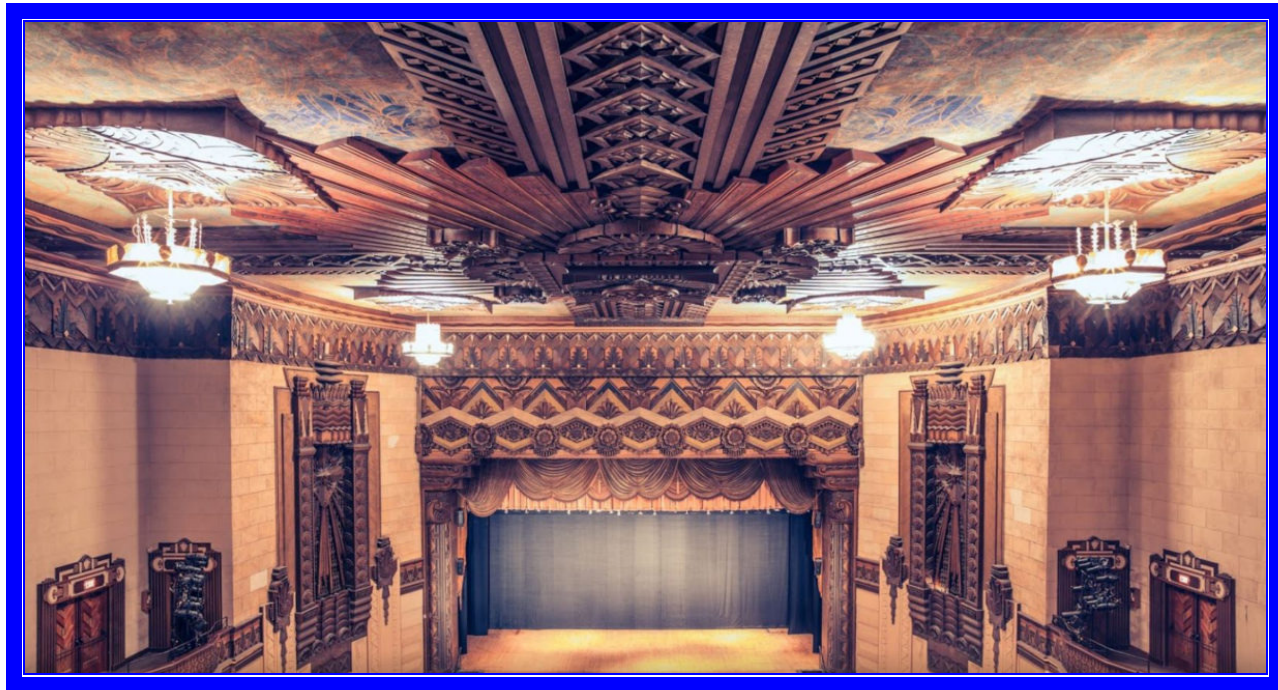
# Warner Grand, San Pedro, California



(spfa.com)



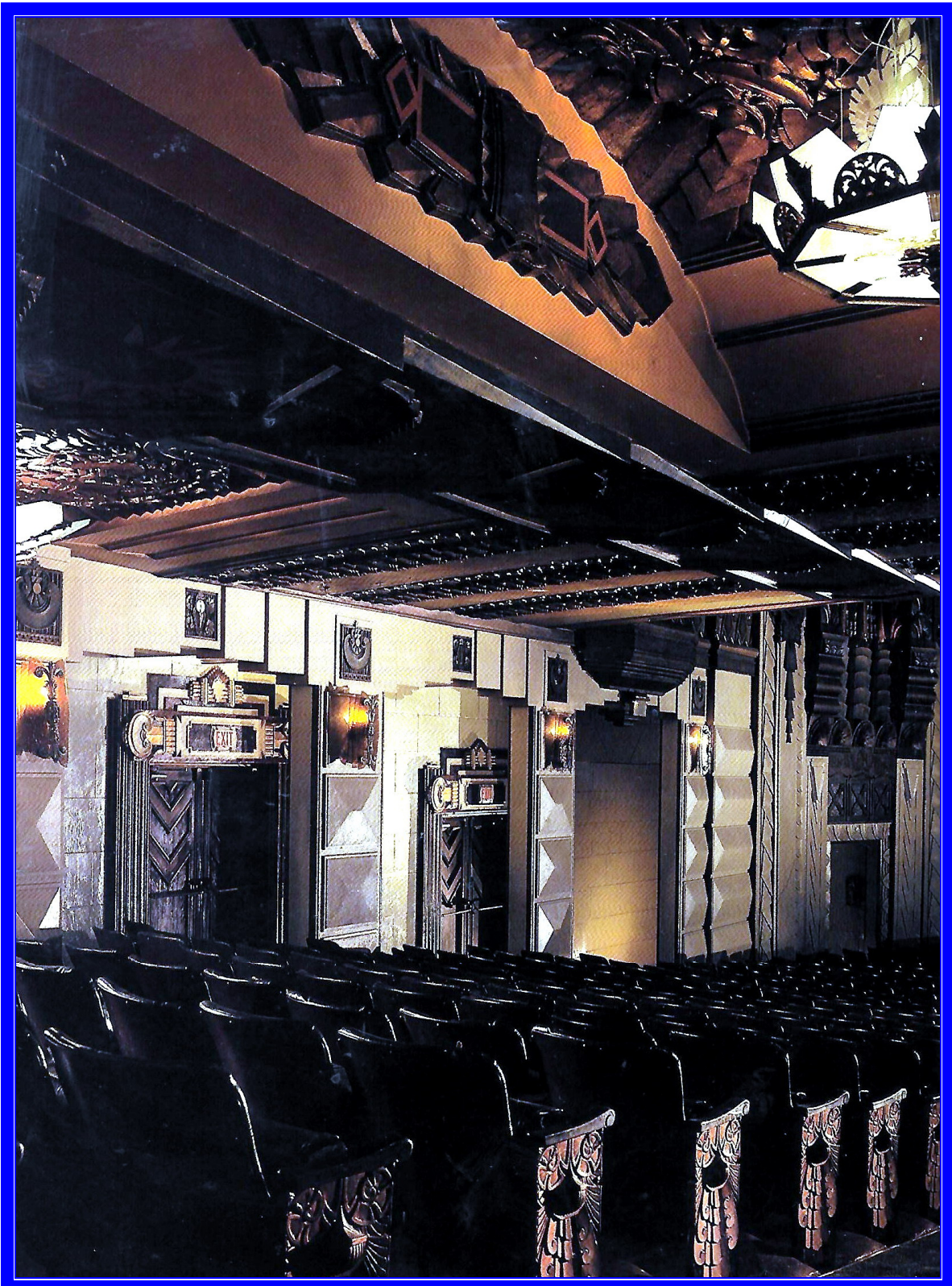
# Warner Grand, San Pedro, California



(spfa.com)



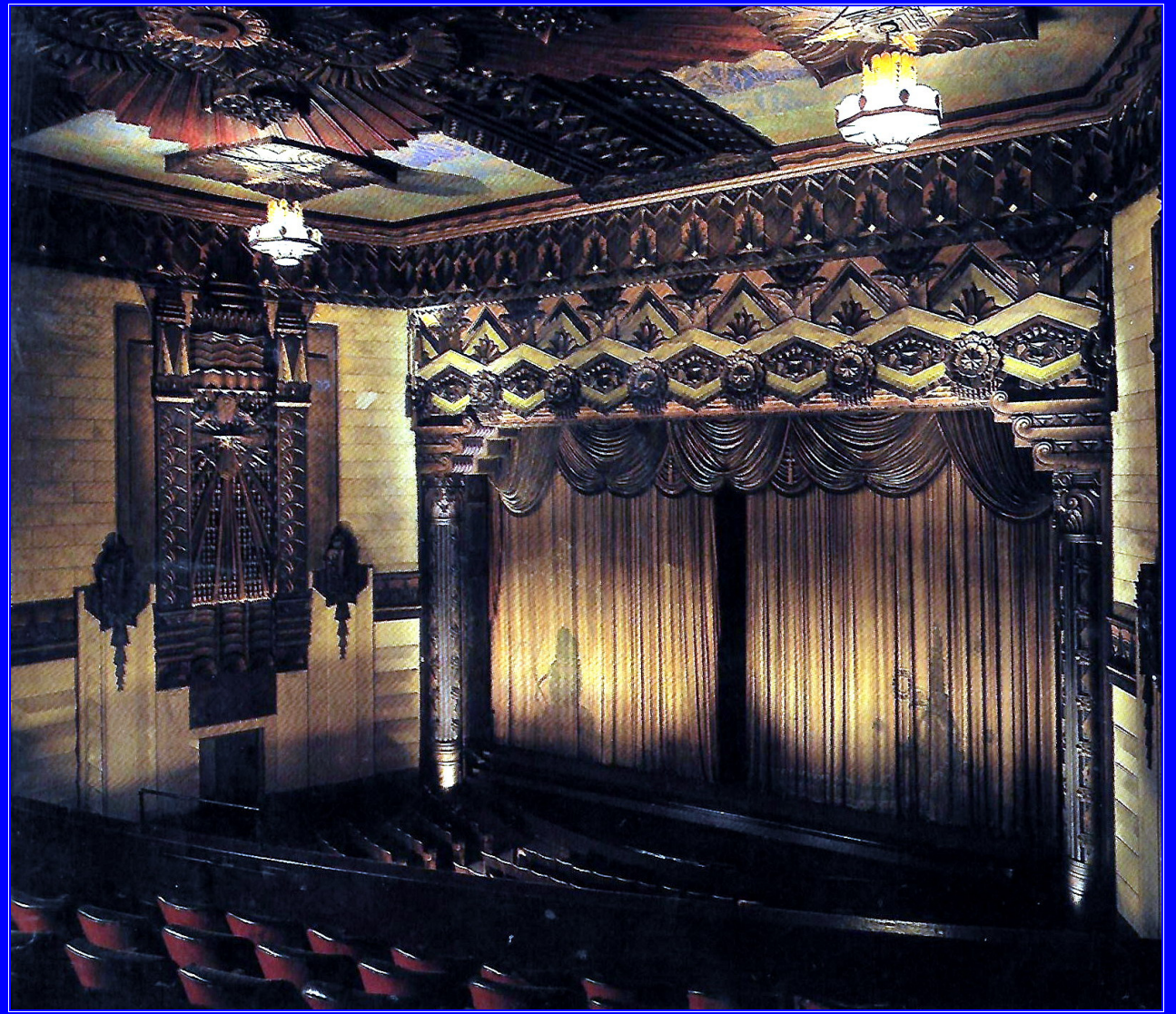
# Warner Grand, San Pedro, California



(The Last Remaining Seats)



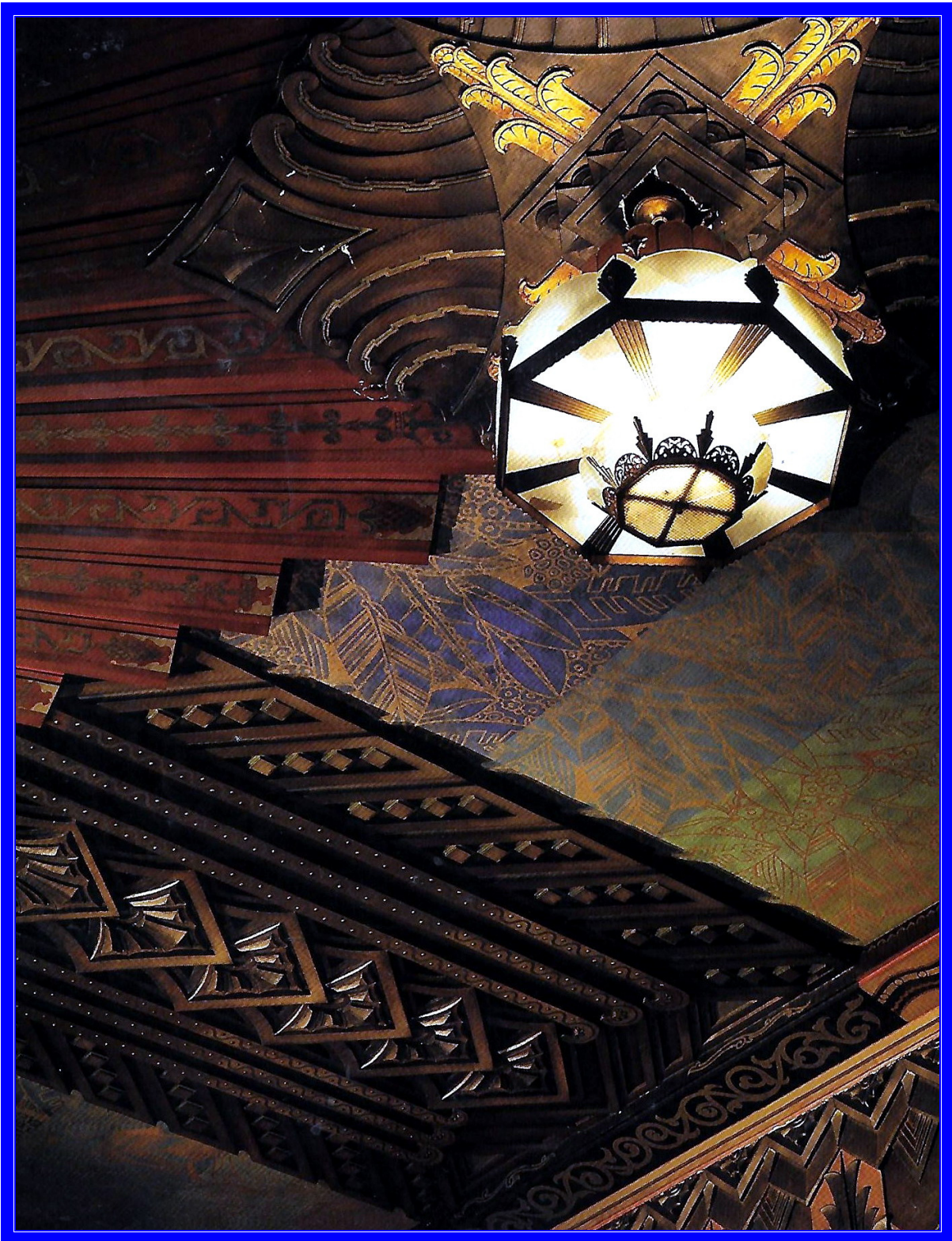
# Warner Grand, San Pedro, California



(The Last Remaining Seats)



# Warner Grand, San Pedro, California



(The Last Remaining Seats)





# **BOW-TIE WARNER RIDGEWOOD**

**OPENED 1932**

**SEATING CAPACITY 1750**

**OPERATOR Stanley-Warner**

**ARCHITECT Thomas W Lamb**

**LIGHTING**



# Bow-Tie Warner, Ridgewood, New Jersey





# **WARNER, LONDON, UK**

## **Leicester Square**

**OPENED 1938**  
**Now refurbished as VUE-WEST END multiplex**

**ORIGINAL SEATING CAPACITY 1789**

**ORIGINAL OPERATOR Warner**

**ARCHITECTS E A Stone & T R Somerford**

**HVACR**  
**Air conditioned by Carrier Engineering Company, UK**

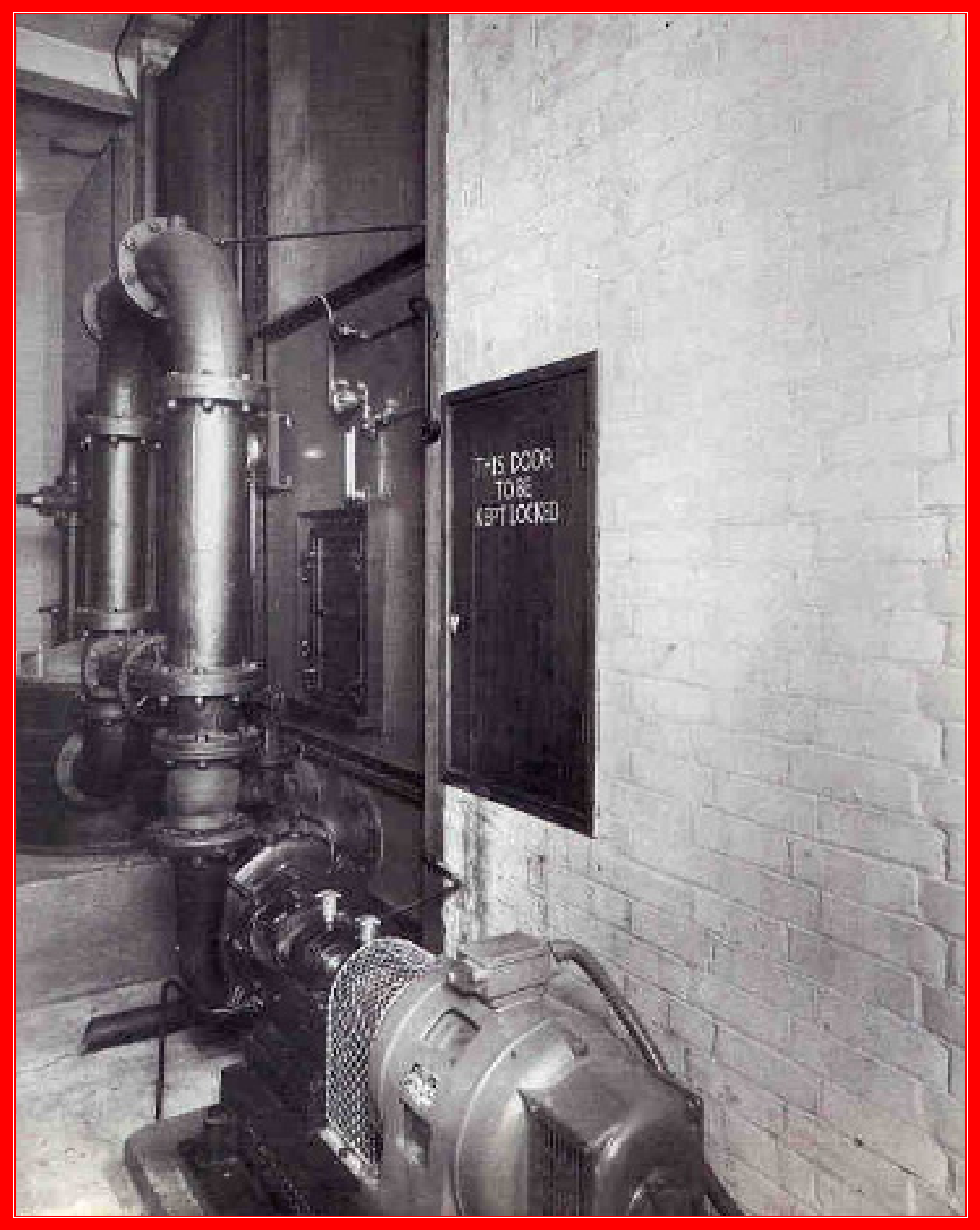
Photographs from CIBSE Heritage Group Archive



## Warner, Leicester Square, London, UK

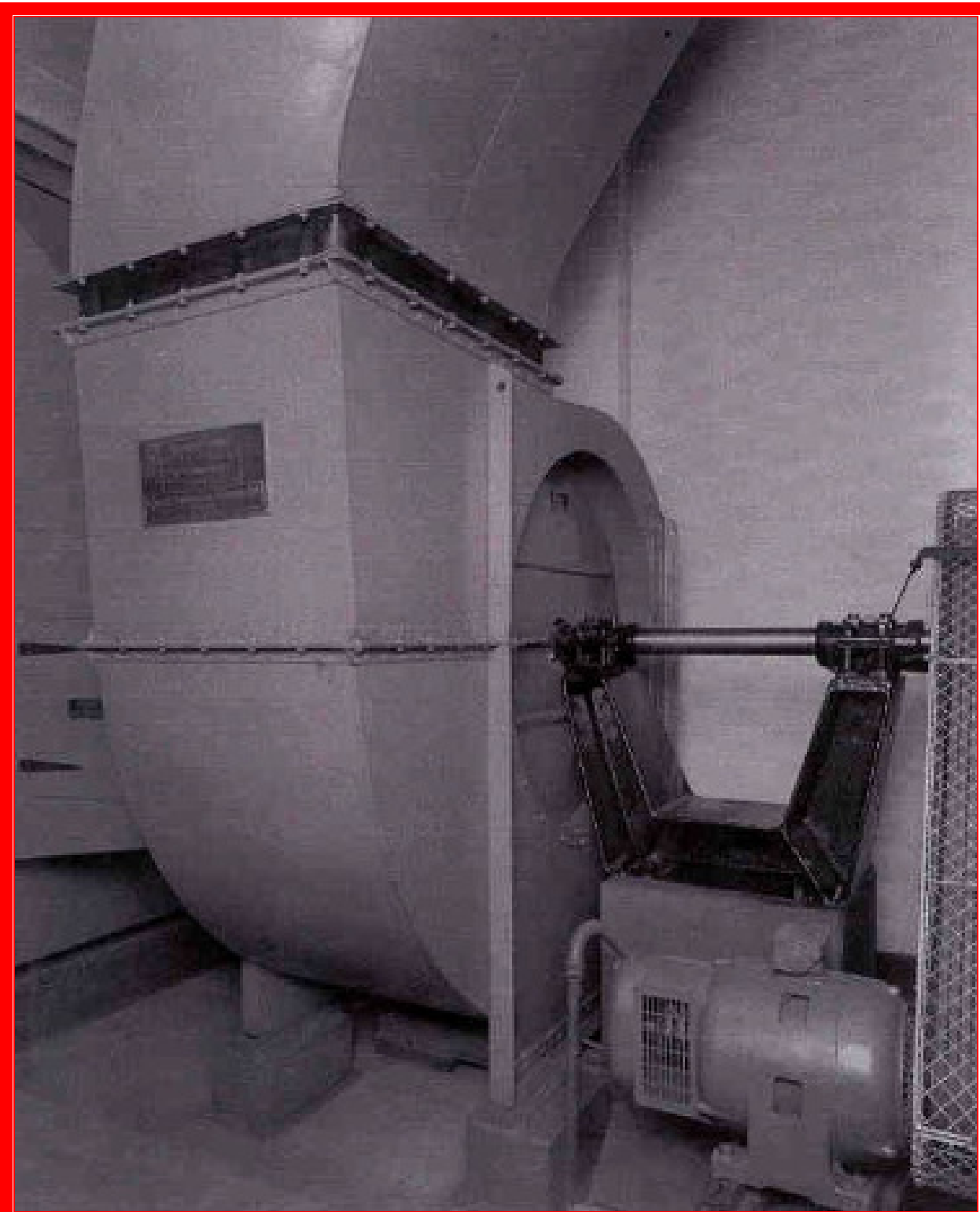


**Warner, Leicester Square, London, UK**





**Warner, Leicester Square, London, UK**



**Warner, Leicester Square, London, UK**

