

J. S. DeMART, JR.
PRESIDENT

A. F. WENNER,
SECRETARY


H. K. WEINER,
TREASURER

ISBELL-PORTER COMPANY

ENGINEERS AND FOUNDERS

POLAR
ABSORPTION
REFRIGERATING
MACHINES
DESIGNED TO USE
EXHAUST OR LIVE
STEAM
LOW TEMPERATURE
WORK A SPECIALTY

BRINE
COOLERS
PLATE
ICE PLANTS



DESIGNERS
AND
BUILDERS
OF ALL
APPARATUS
FOR
GAS WORKS
REFRIGERATING
AND
ICE MAKING
PLANTS
ETC.


MAIN OFFICE AND WORKS
BRIDGE & OGDEN STREETS
NEWARK, N. J.
ESTABLISHED 1865

REFRIGERATION PART ONE

ICE-MAKING, COLD STORES AND BREWERIES

BRIAN ROBERTS

Established 1872 **THE HUETTEMAN & CRAMER CO.** Incorporated 1894
 Mack Ave. and Mich. Central Belt Line. DETROIT, MICH.



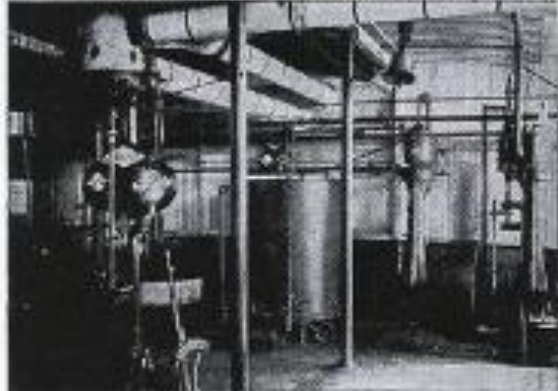
Builders of
 Ice Machines, Coilles, Engines,
 Pipe, Tank & Copper Work.
 Contractors for
 Complete Plants.
 Complete Line of
 ammonia Valves and Fittings.
 Catalogue on Request.

"The Safety" Refrigerating Machine - Simplest, Strongest, Safest. All sizes.

Memphis Machine Works
 MEMPHIS, TENNESSEE
 Builders of High Grade Small and Medium Size

**Ice and
 Refrigerating
 Machines**

One-Half to Twenty-Five Tons Daily Capacity.



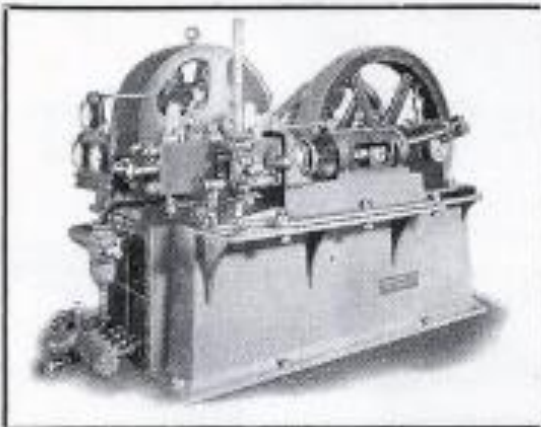
ICE MAKING AND REFRIGERATING MACHINE ON BOARD U. S. S. BOSTON.

ISELL-PORTER COMPANY
 ENGINEERS AND FOUNDERS

*BUILDERS
 OF THE* **POLAR** Absorption Refrigerating and Ice Making
 Machine, for direct expansion or brine
 circulation.

**Polar BRINE COOLERS and
 CONDENSERS** *For Compression Plants*

Office and Works, - - - - - **NEWARK, N. J.**



**The Carbonic Anhydride
 System of Refrigeration**

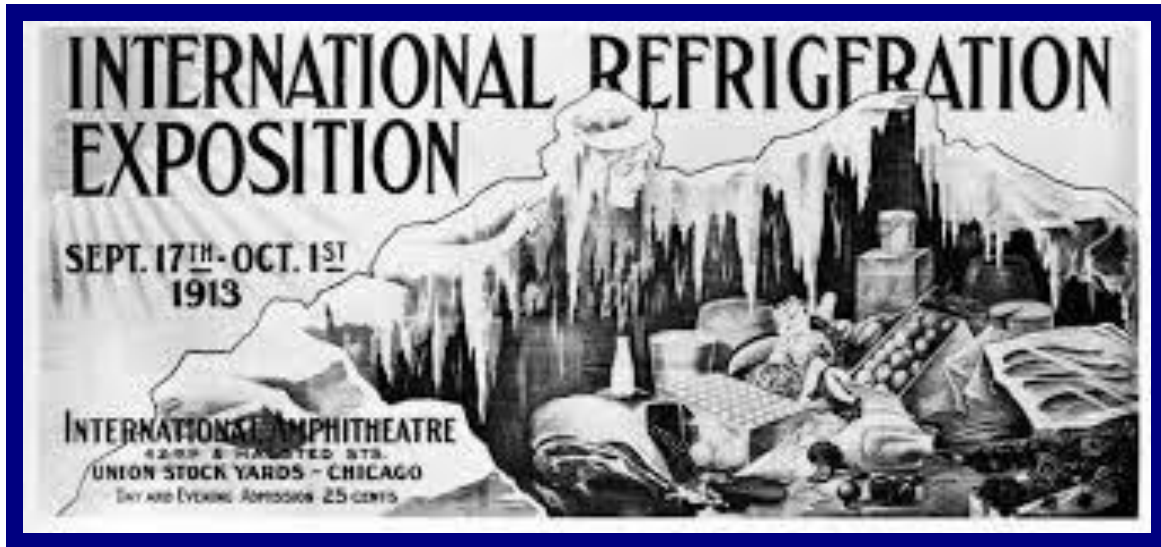
GIVES THE BEST ECONOMY AND EFFICIENCY WITH SAFETY IN OPERATION

No Odor No Explosions

OUR MARINE AND LAND TYPE MACHINES
 OPERATING IN HUNDREDS OF PLANTS GIVE
 BEST RESULTS EVER OBTAINED. > > >

KROESCHELL BROS. ICE MACHINE CO.
 29-39 Erie Street **CHICAGO, ILL.**
 Write for Catalog

CONTENTS



Information and illustrations are taken from the Heritage Group Archives with special acknowledgment to sources listed below. BMR, Budleigh Salterton 2021.

ICE-MAKING REFRIGERATION PLANTS

Ice Plant 4, Can Ice 6 & 8, Absorption Plant 7, Ice Mould 7, Block Ice 8, Cake Ice 9

COLD STORE REFRIGERATION PLANTS

Cold Store 3 & 5, Packing House 6

BREWERY REFRIGERATION PLANTS

Absorption 4, Cellars 5, Fermenting-Cellars 44

REFRIGERATION COMPANY ADVERTISEMENTS

Isbell-Porter 1 & 2, Artic 10, Brotherhood 11, Cleveland 12, Consolidated 13, Federal 14, Frick 15, Haslam 14, Hercules 15, Huetteman & Cramer 2, Great Lakes 16, Holden 17, Kroeschell 2, Memphis 2, Pictet 18, Pliable 19, Pulsometer 20 & 21, Vogt 22 & 23, York 24 & 25

REFRIGERATION INSTALLATIONS AND MACHINERY

Grimsby Ice Factory, Lincolnshire 32 to 33

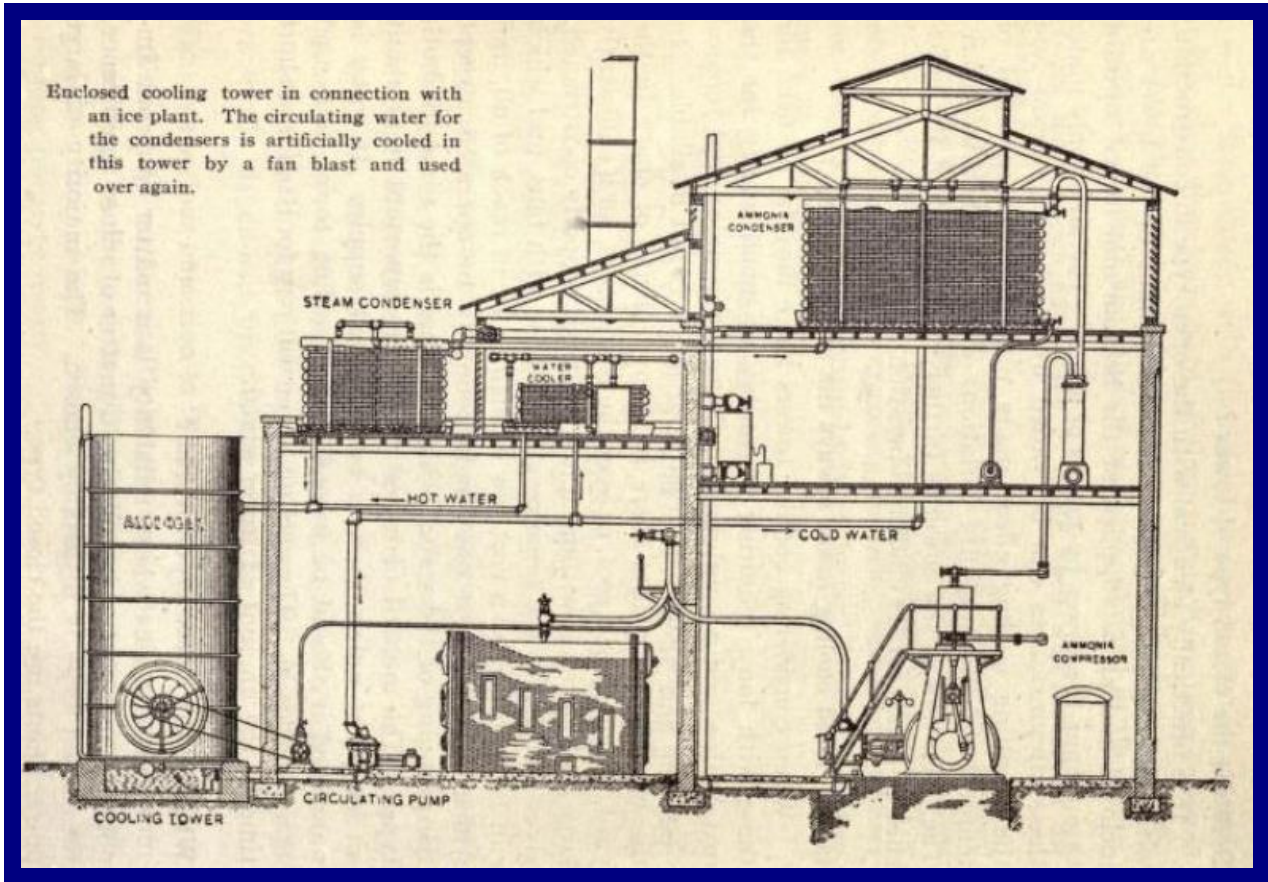
Photographs from [Great Grimsby Ice Factory Trust](#)
and from "[Behind Closed Doors, Urban Exploration](#)", website.

Armour Meat Packing Plant, Louisville, MO. 34 to 36

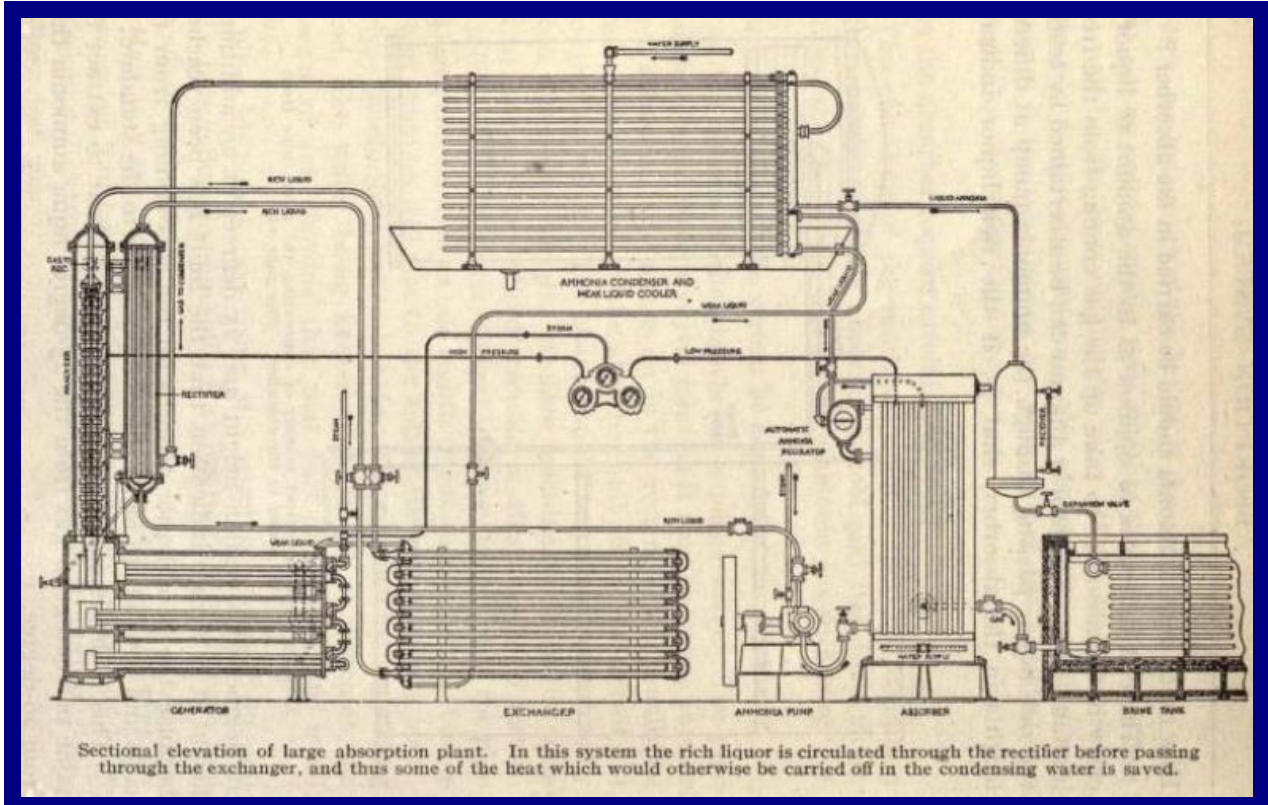
Ice Block Factory Machines 37 to 43

Photographs from "[Cooling the South, The Ice Block Era 1875-1975](#)", Elli Morris, 2008.

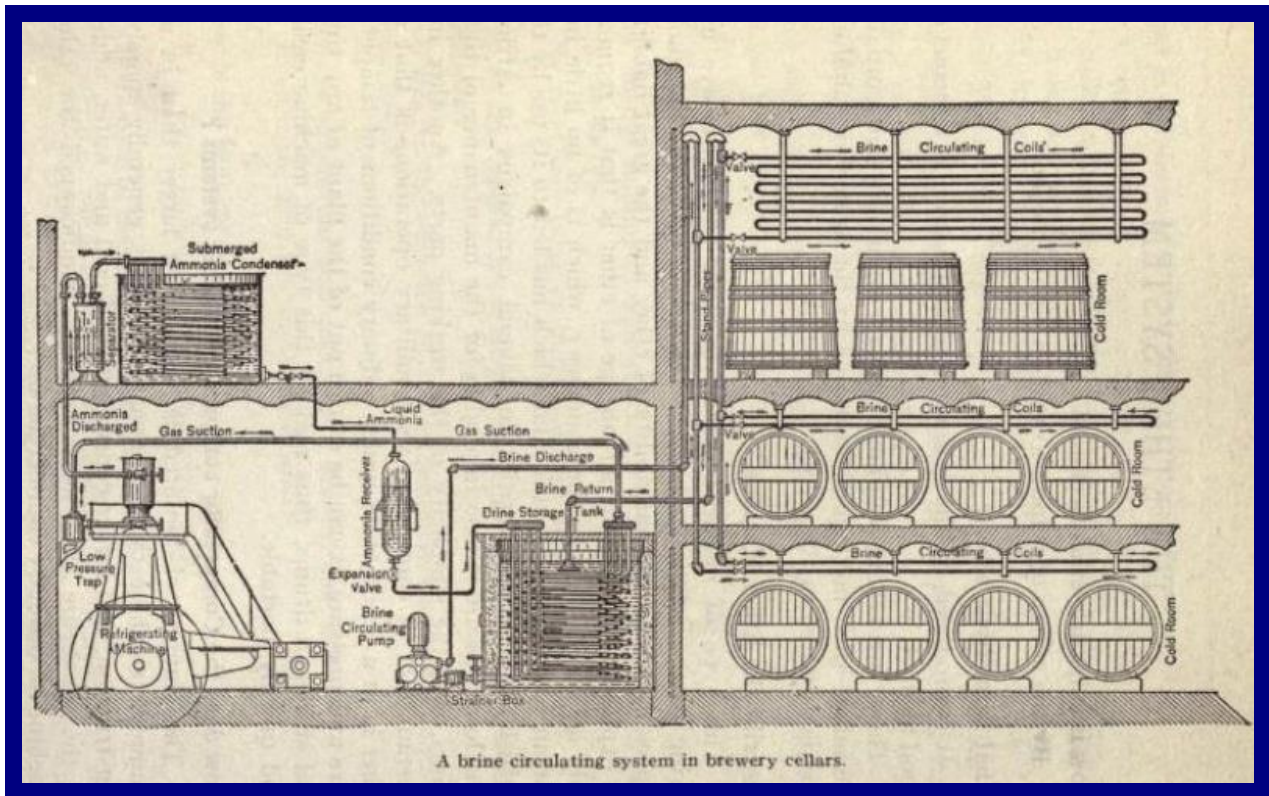
ICE MAKING PLANT



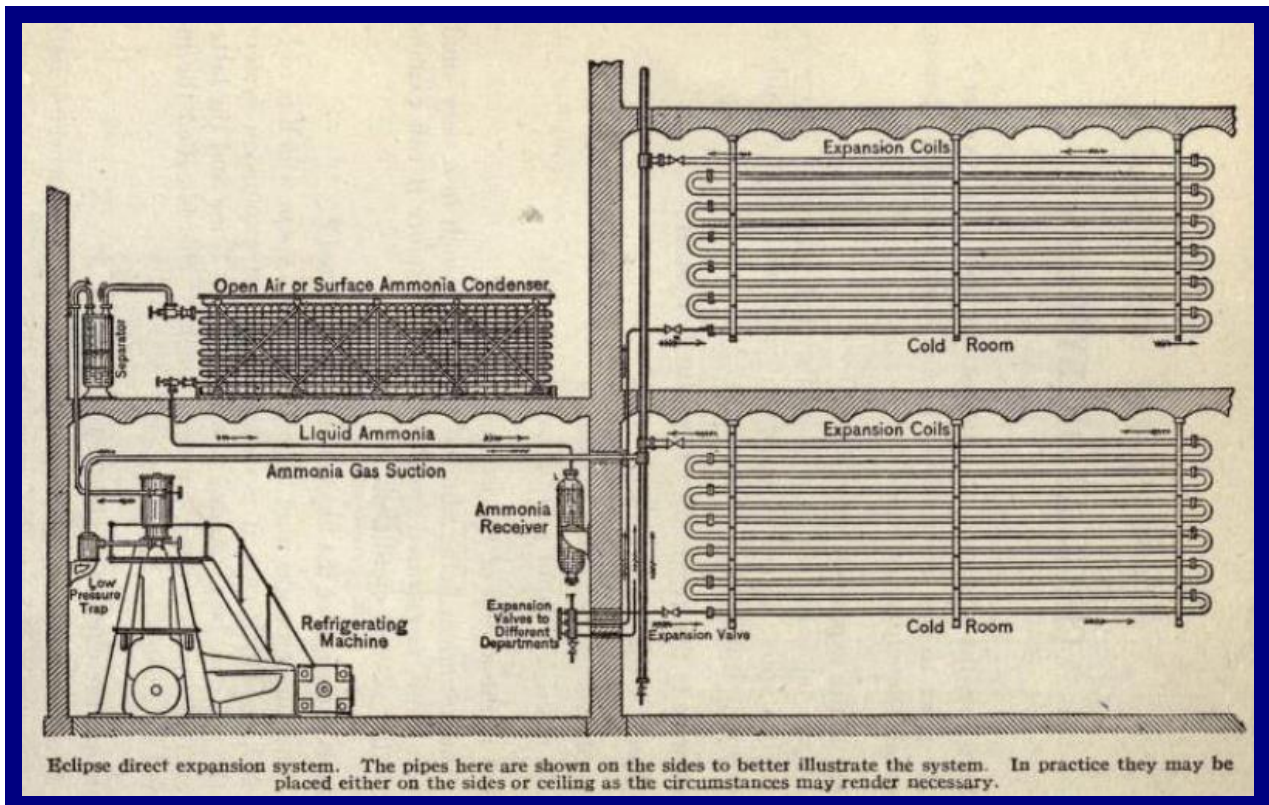
BREWERY LIQUOR COOLING



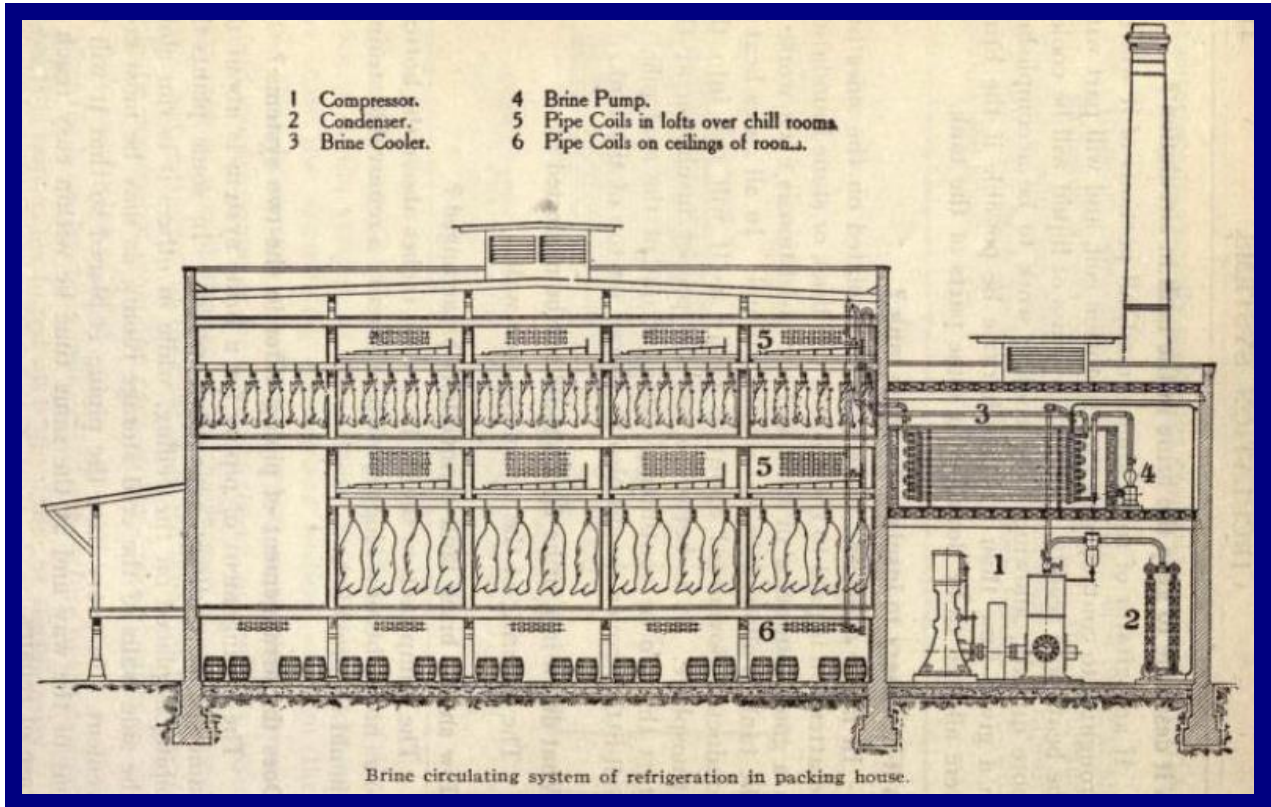
BREWERY CELLAR COOLING



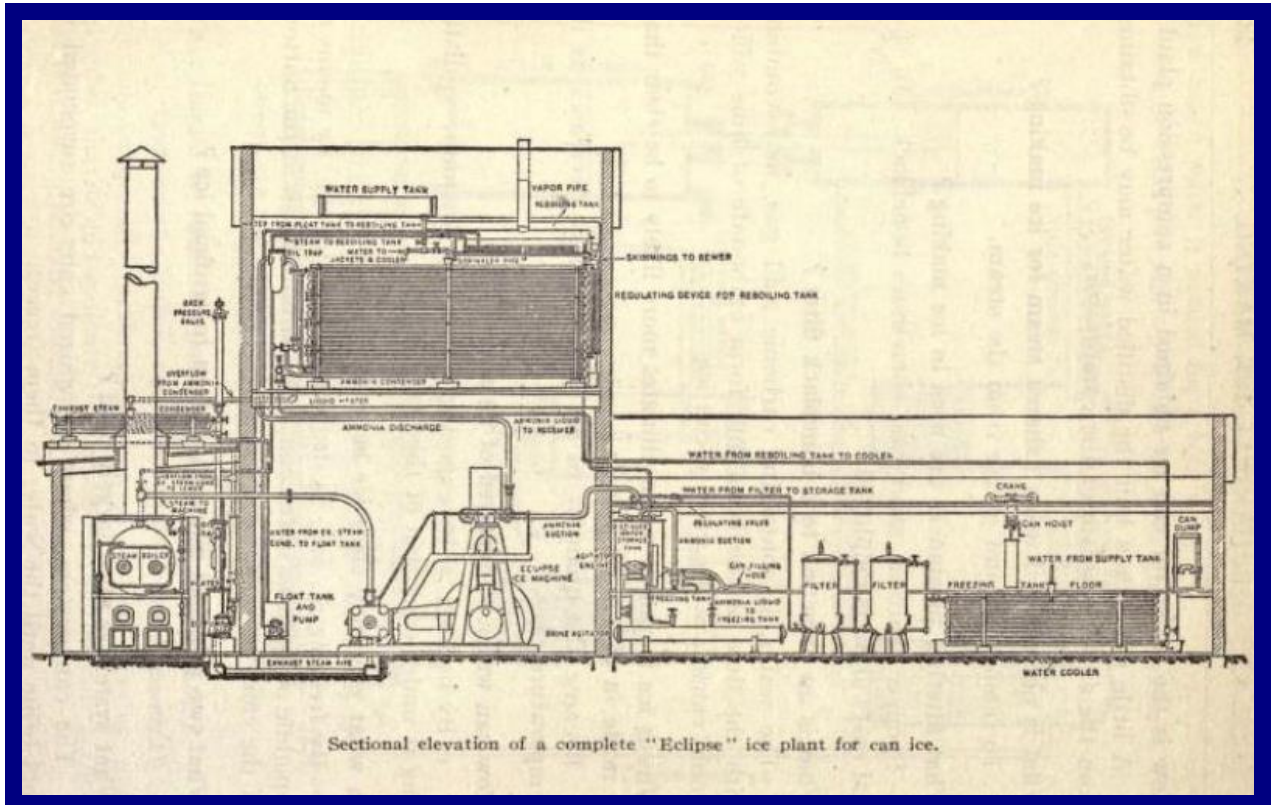
COLD STORAGE



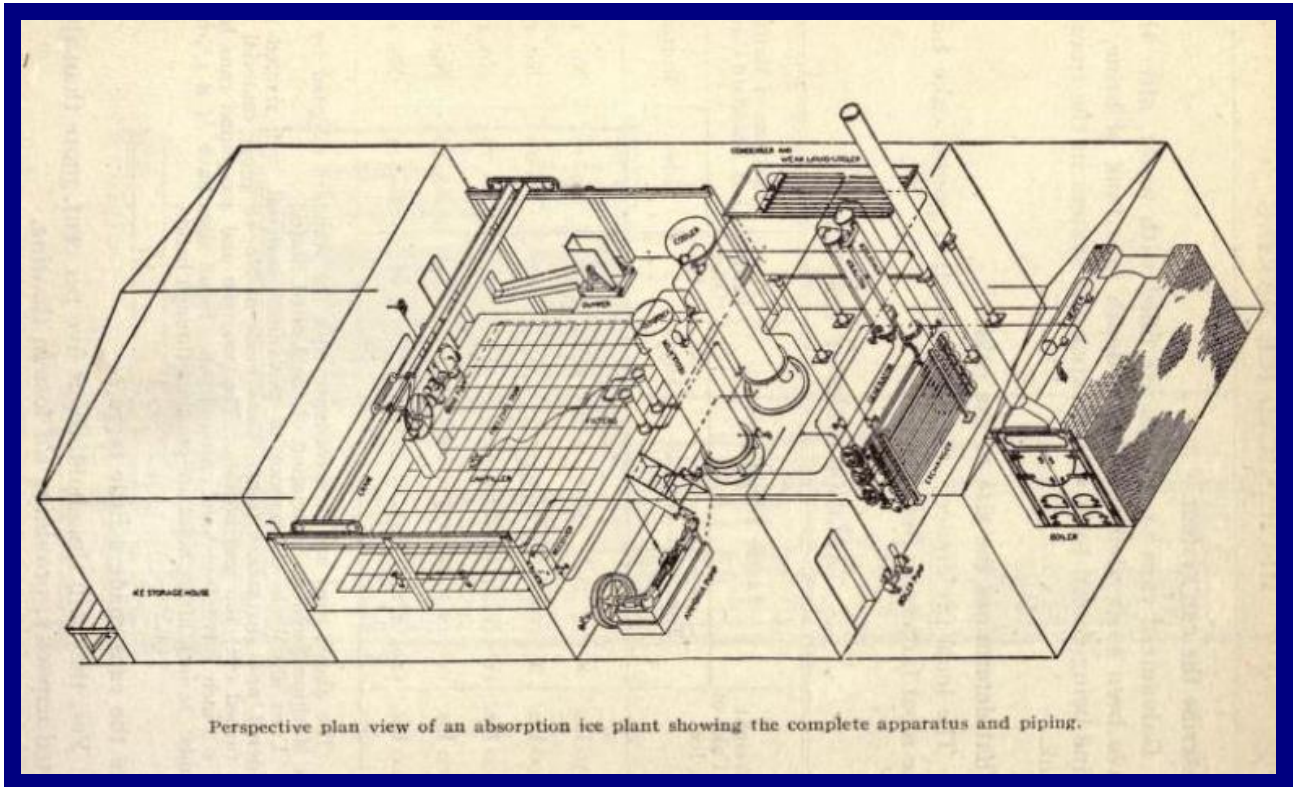
PACKING HOUSE CHILL ROOMS



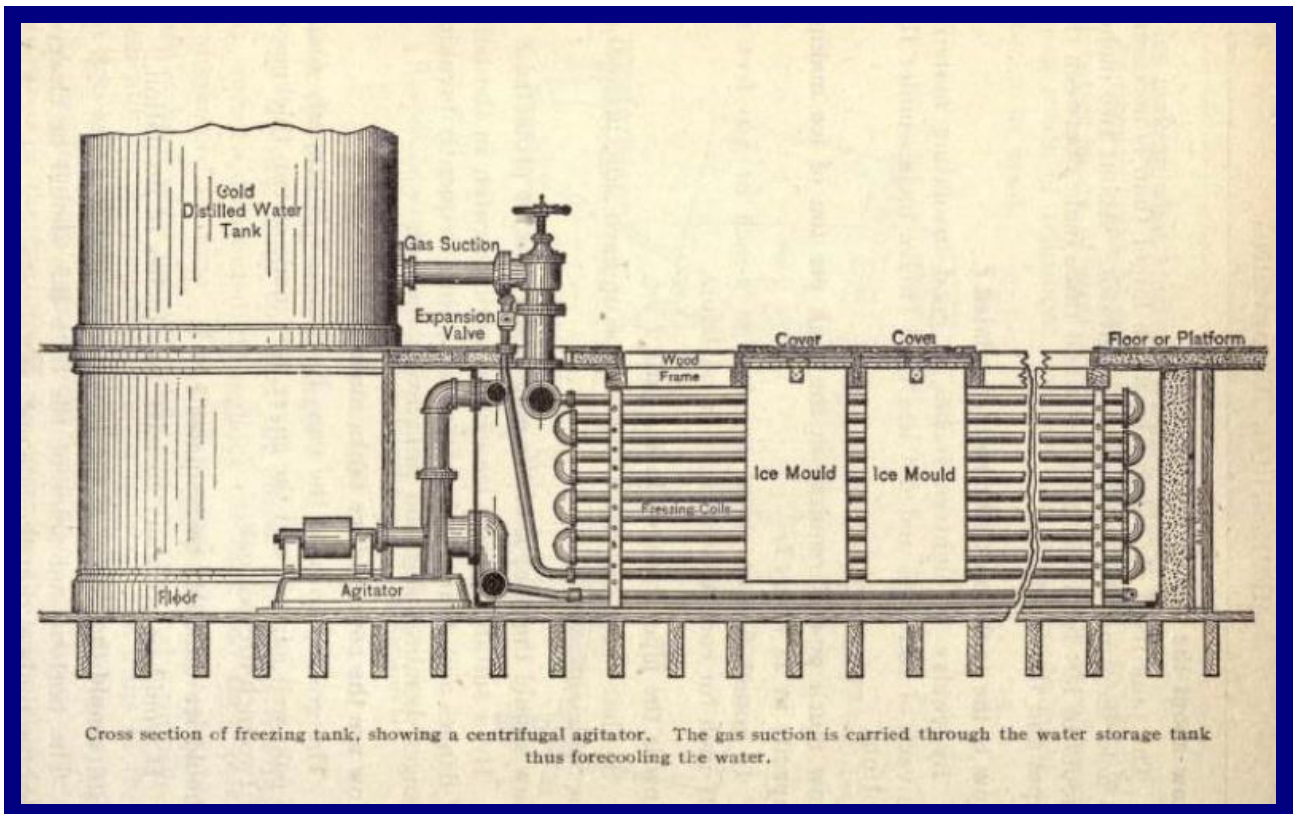
CAN ICE PLANT



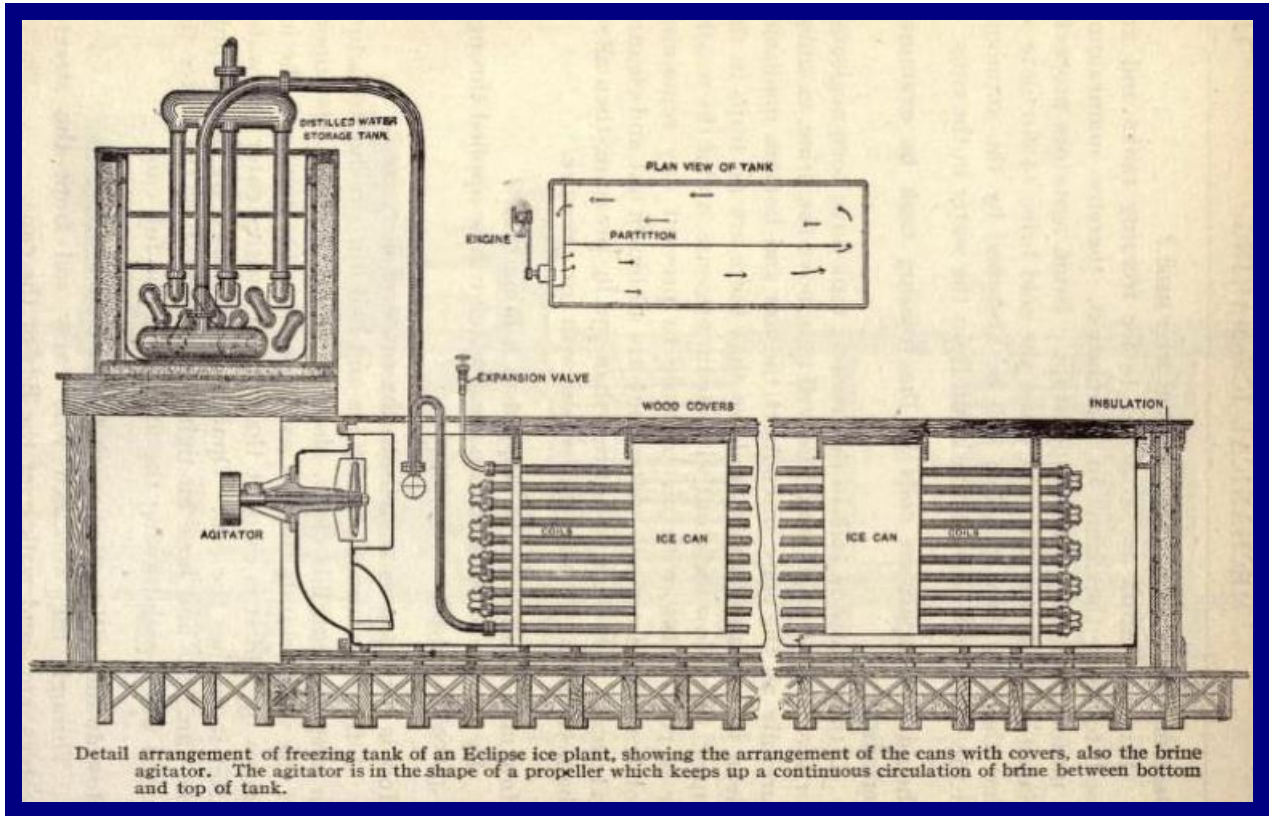
ICE MAKING PLANT



MOULD ICE MAKING PLANT



CAN ICE PLANT



ICE BLOCK PLANT

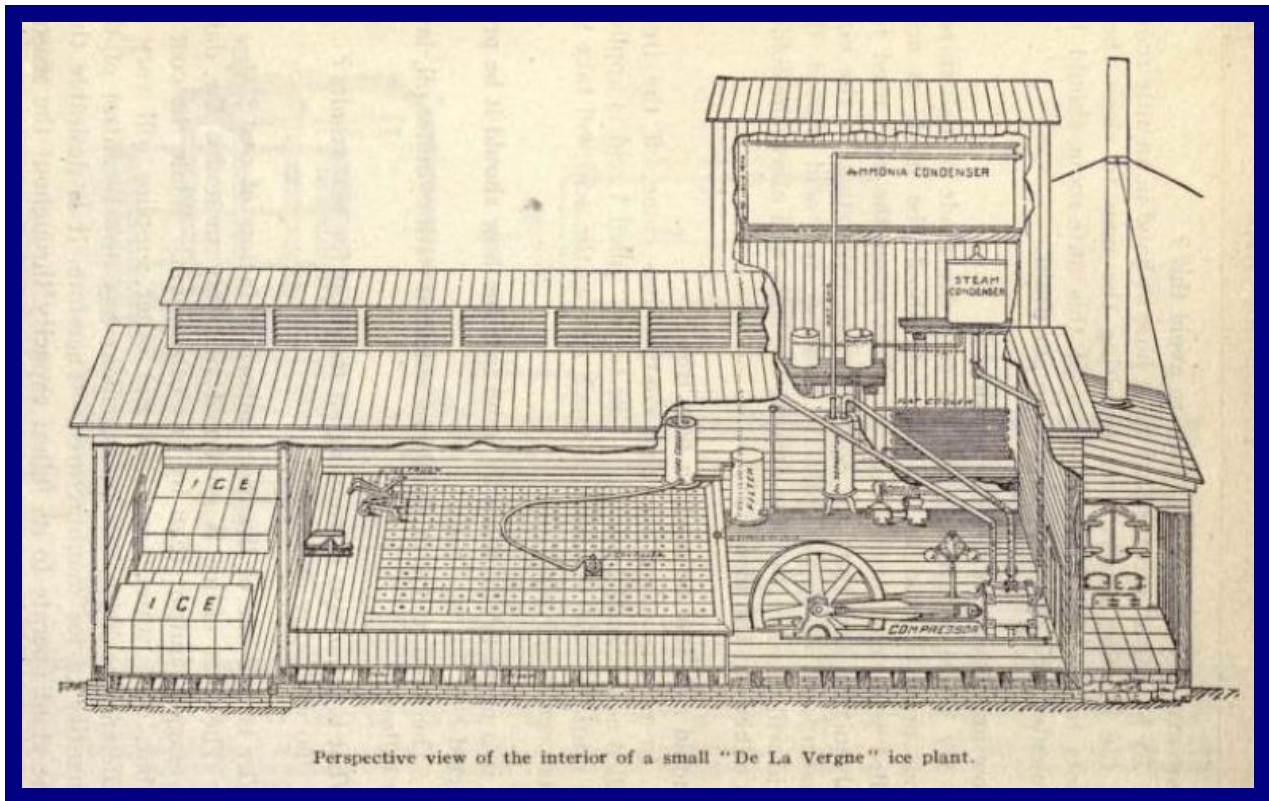
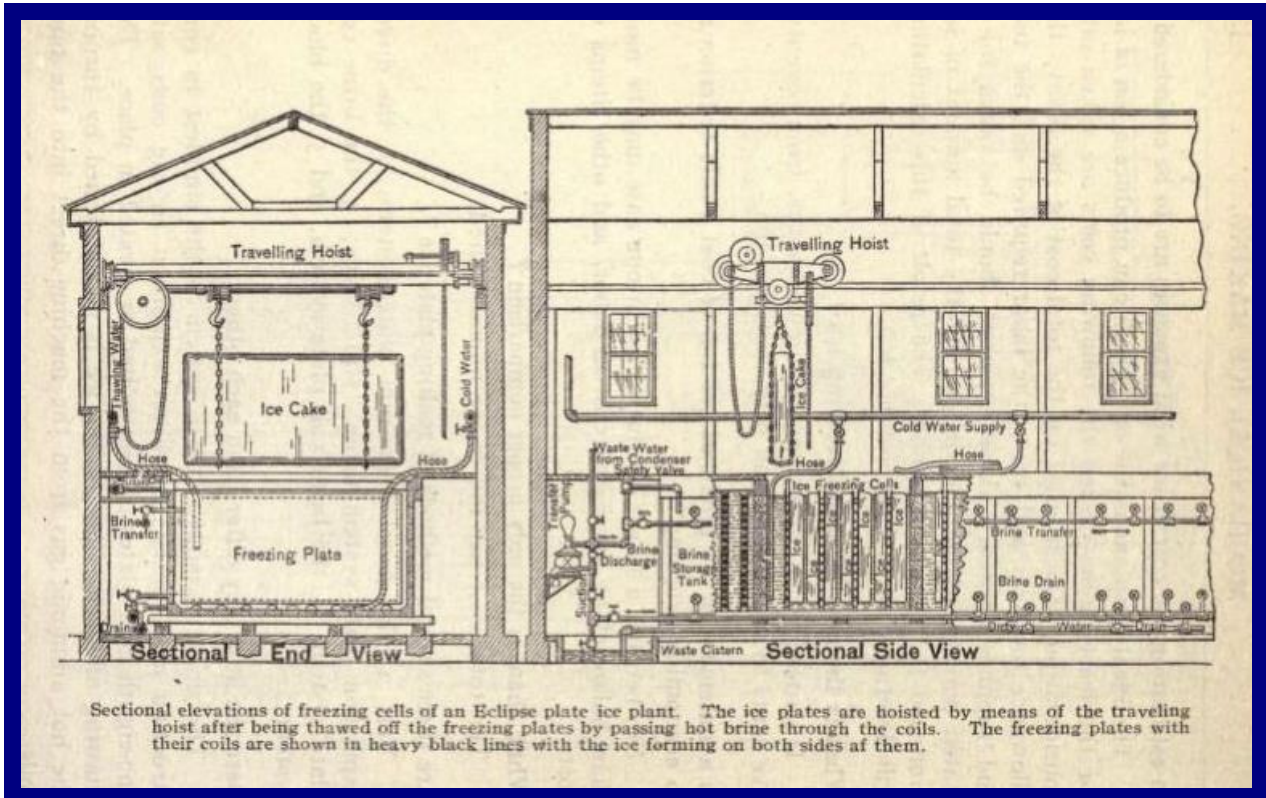
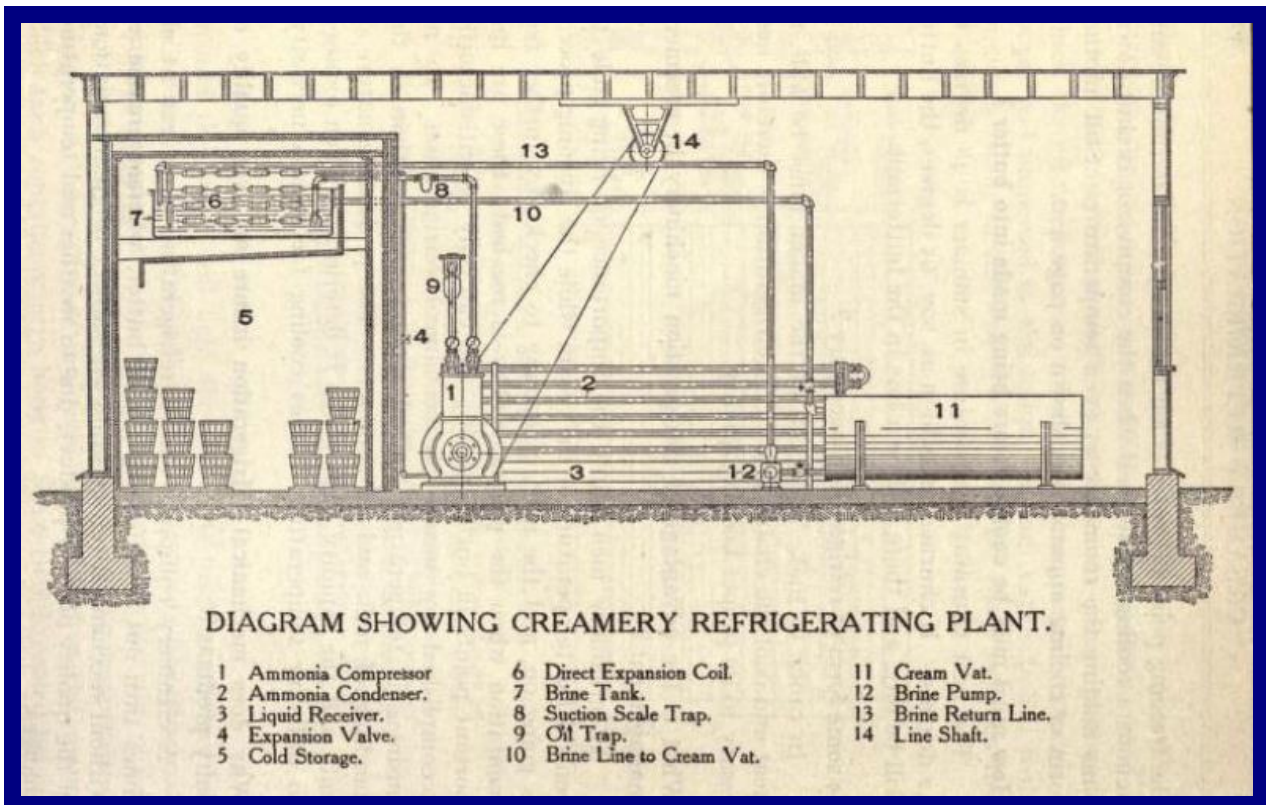


PLATE ICE PLANT



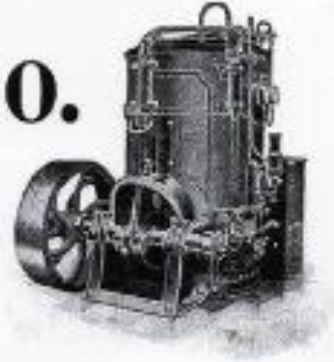
CREAMERY REFRIGERATING PLANT



ARTIC COMPANY, OHIO

The Arctic Co.

Main Office and Works:
Canton, Ohio.



Manufacturers of

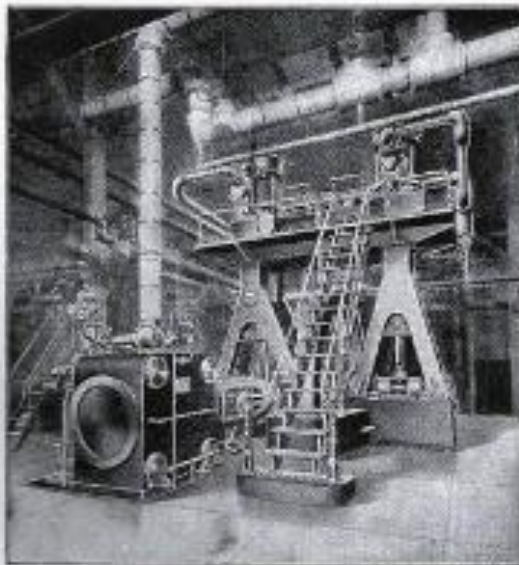
"Arctic" Ammonia and "Hall's" Patent Carbonic Anhydride (CO₂)

(Under Patents of J. & E. Hall, Ltd.)

Ice Making and Refrigerating Machines

...ALSO...

TANKS, BOILERS, BRINE COOLERS, CONDENSERS, both
for Steam and Ammonia, STEAM PURIFIERS, PIPING



Ammonia Fittings and Valves

Unequalled Facilities for
Getting Out Work

OUR RECORD

*Arctic Machines in Continuous
Service for 25 Years*

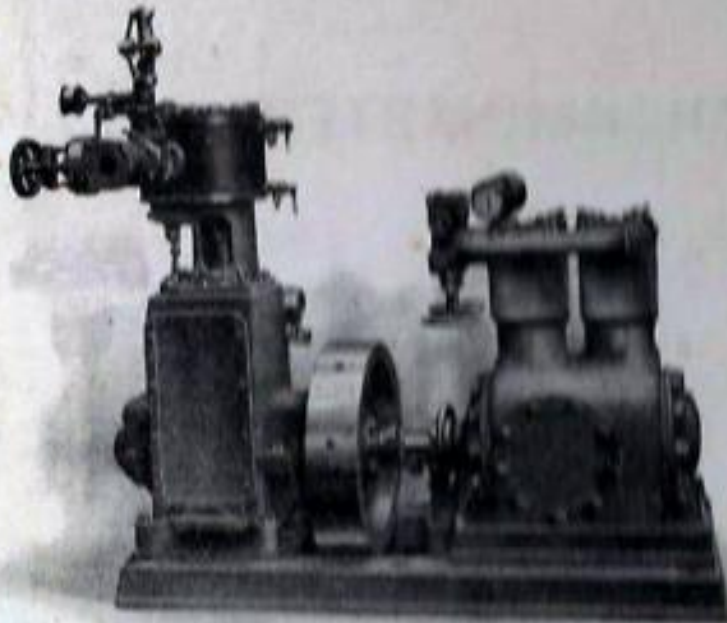
Correspondence Solicited

PETER BROTHERHOOD, PETERBOROUGH

NH₃ and CO₂
REFRIGERATING PLANT

FOR

Cold Storage, Ice-making, Dairies, Breweries,
and other Industrial and Chemical purposes.



418

STEAM DRIVEN NH₃ COMPRESSOR,
CAPACITY 7 TONS REFRIGERATION.

PETER BROTHERHOOD, Ltd.

PETERBOROUGH

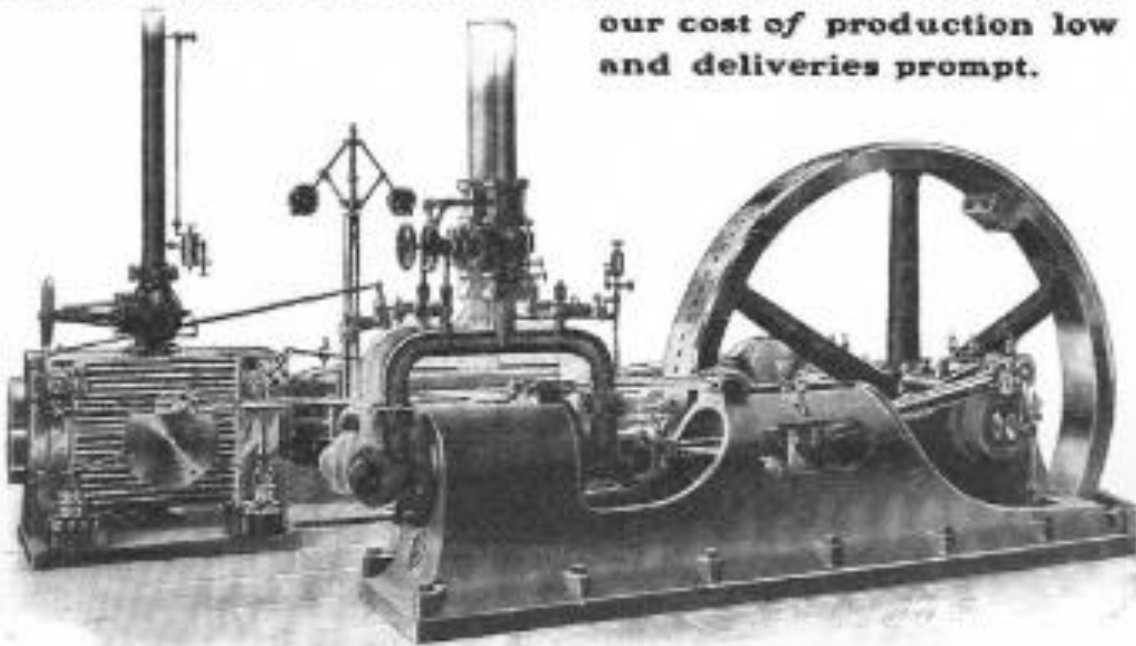
AND

Central House, Kingsway, London, W.C.2

CLEVELAND ICE MACHINE, OHIO

THE CLEVELAND makes good

Designed by engineers with experience and push. New patterns. Compressor has all features necessary to make it a machine successful technically and commercially. Shops run on modern lines. Machines built in lots, hence our cost of production low and deliveries prompt.



Horizontal and Vertical Types. 1 to 250 Tons Capacity. Any Drive.

It is not our compressor alone which is efficient. Tanks, pumps, piping, everything that goes with it is planned with care and judgment to make your installation a profitable investment.

New plants furnished for any service. Old ammonia compression plants of any make improved. *Let us show you.*

THE CLEVELAND ICE MACHINE CO.

1615-25 Merwin Ave.

Cleveland, Ohio

CONSOLIDATED ICE, CHICAGO



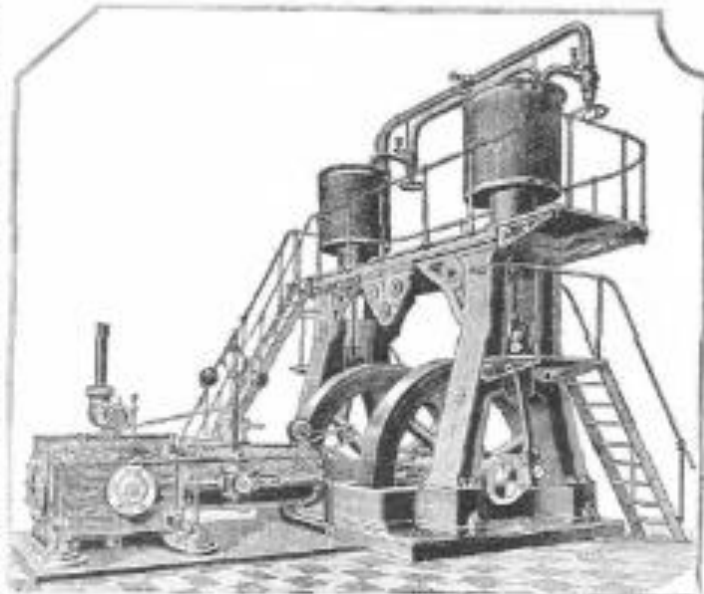
CONSOLIDATED ICE MACHINES

FOR several years past we have been engaged in building Consolidated Ice Machines, and many of the very best running in the United States, at the present time, are of our manufacture. Since the original Company has failed, we have concluded to continue this business, and hereafter will manufacture, to order, any kind or style of a Consolidated Ice Machine desired. We will also contract for complete plants, and will put in either direct or latent circulation, as may be desired. We make a specialty of furnishing duplicate parts, and keep them always in stock, and can furnish on short orders any detail of these machines. We manufacture special steel valves and white metal rings designed especially for ammonia work.

We guarantee protection against any and all claims or pretended claims for patents on these machines.

These machines are known throughout the United States for the excellence of their construction, and their superiority to all others in use. They need no better recommendation than their own work. All the material and workmanship on them is of the best quality.

We have the original drawings and patterns in our possession, and can furnish a better machine for less money than can be built elsewhere. We also manufacture and keep on hand to supply the trade the best steel fittings and steel valves made in the world, designed especially for ammonia work, and will be pleased to quote prices to purchasers.



NOTE.—It has come to our knowledge that parties owning or claiming to own a bogus patent, issued to one James Doyle in 1876, for an ammonia compressor, have been putting in circulation notices that the pumps used on the Consolidated Refrigerating Machines is an infringement on said patent, and that they will bring suit against any one using them; therefore we hereby guarantee to all persons purchasing one of our machines protection against such fraudulent claims, and request all persons receiving one of such notices to forward the same to us, with a statement setting forth whether they have been influenced not to buy a Consolidated Machine hereby. We also give the parties setting up these claims public notice that we will bring suit against them for damage to our business by them, by misrepresentation and fraud.

JOHN FEATHERSTONE'S SONS,

2-36 Front Street, Corner North Halsted,

CHICAGO.

HASLAM FOUNDRY, DERBY

ADVERTISEMENTS.

ix

Ice-Making and Refrigerating Machinery

ON FOUR DIFFERENT SYSTEMS.

|| DRY AIR,
|| AMMONIA COMPRESSION,
|| AMMONIA ABSORPTION,
|| CARBONIC ANHYDRIDE (C.O.).

*Used by all the leading GOLD STORAGE
COMPANIES, SHIP OWNERS and BREWERS
throughout the World.*

CATALOGUE AND ESTIMATES ON APPLICATION.

THE
HASLAM Foundry & Engineering Co.,
Limited,

INCORPORATED WITH

PONTIFEX & WOOD, LTD.,

UNION FOUNDRY:
DERBY.

34, New Bridge Street,
LONDON E.C.

HERCULES IRON WORKS, CHICAGO

DECEMBER, 1901

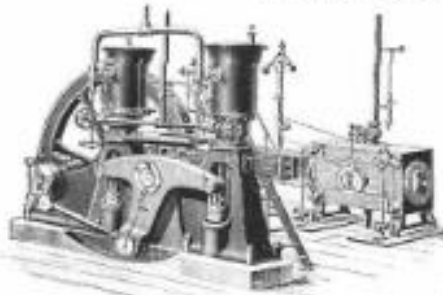
ICE MAKING AND REFRIGERATION

315

THE HERCULES ICE MAKING AND REFRIGERATING MACHINE

(REFRIGERANT: ANHYDROUS AMMONIA.)

FOR BREWERIES, PACKING HOUSES, COLD STORAGE AND ICE MAKING.

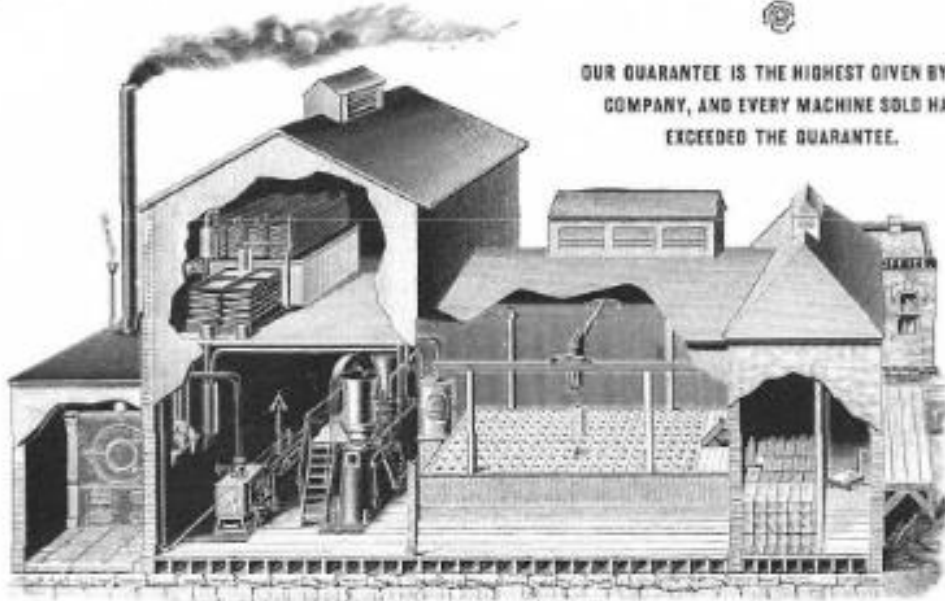


THE HERCULES ICE MACHINE.



HERCULES WORKS, AURORA, ILL.

The Hercules Ice Machine is the most compact, most economical, most easily handled, well constructed, and thoroughly satisfactory machine in the market.



THE HERCULES MODEL ICE PLANT.

OUR GUARANTEE IS THE HIGHEST GIVEN BY ANY COMPANY, AND EVERY MACHINE SOLD HAS EXCEEDED THE GUARANTEE.

A. NUNNING BREWING CO.
ST. JOSEPH, MO.

HERCULES IRON WORKS, CHICAGO, ILL. October 13, 1901.
In reply to your inquiry relative to the above Refrigerator placed by you in our factory, I am pleased to say the machine has never failed our expectations, and your guarantee fully demonstrated its worth and reliability. It has the past year run continuously night and day, and has not consumed any stop for repairs of any kind, and we are greatly pleased to add our name to the long list of testimonials which the Hercules bears.
Yours respectfully,
A. NUNNING, President.

MEADERS & OSGOOD,
NASHVILLE, TENN.

HERCULES IRON WORKS, CHICAGO, ILL. July 23, 1901.
Our 10-ton Ice Machine purchased of you, after one month's continuous operation has given such wonderful satisfaction that we do not wish a word of its ability to perform the work assigned. It is now working with our twenty-five tons daily of the finest ice we have ever seen, besides refrigerating our storage for house. Congratulations are upon its good work, and wishing you the success you deserve, we are,
Yours respectfully,
MEADERS & OSGOOD.

THE HERCULES BLUE BOOK No. 1, FULL OF HELPFUL AND INTERESTING INFORMATION, IS NOW IN PRESS, AND WILL BE SENT FREE TO INTENDING PURCHASERS.

NEW YORK OFFICE,
150 BROADWAY.

THE HERCULES IRON WORKS,

WORKS,
AURORA, ILL.

Room 502 Owings Building, Dearborn and Adams Sts., CHICAGO.

GREAT LAKES ENGINEERING, DETROIT

ANTONIO C. PERRANO
President and Gen'l Mgr

GEORGE H. RUSSEL
Vice-President

H. W. HOYT
Vice-President

JOHN D. RUSSEL
Secretary and Treasurer

GREAT LAKES ENGINEERING WORKS

DETROIT, MICHIGAN

Western Office:
609 Postal Building
Kansas City, Missouri

Eastern Office:
Real Estate Trust Bldg.
Philadelphia . . . Penna.

MANUFACTURERS
OF HIGH GRADE

REFRIGERATING AND ICE MAKING MACHINERY



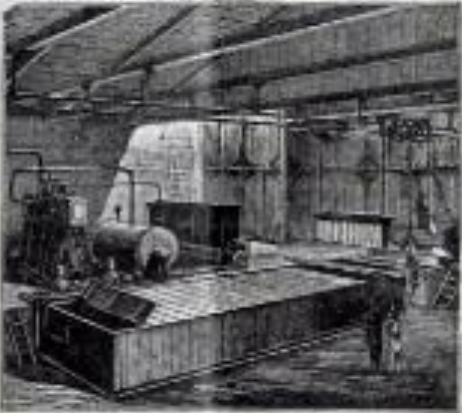
STANDARD "GREAT LAKES" MACHINE

Built in All Sizes

Write for Catalogue

HOLDEN & BROTHERS, PHILADELPHIA

D. L. HOLDEN & BROS.,
MANUFACTURERS OF
ICE MACHINES,
2 ALSO
REFRIGERATING MACHINES,
FOR
Breweries, Distilleries, Packeries, Fruit Houses, Steamships, &c.



PENN IRON WORKS,
BEACH AND PALMER STREETS,
P. O. Box, 1808,
PHILADELPHIA, PA. U. S. A.

D. L. HOLDEN, E. C. HOLDEN, C. M. HOLDEN.

PHILADELPHIA:
LEHMAN & BOLTON, PRINTERS.
1878.

FRANKLIN
INSTITUTE
LIBRARY

Class 621.5 Book H 71 Accession 8089
 From REFERENCE PAMPHLET / 0-23-78

PICTET ICE MACHINE, NEWBURGH

JULY, 1917

ICE AND REFRIGERATION

53

❁ PICTET ❁

Ice Refrigerating Machine

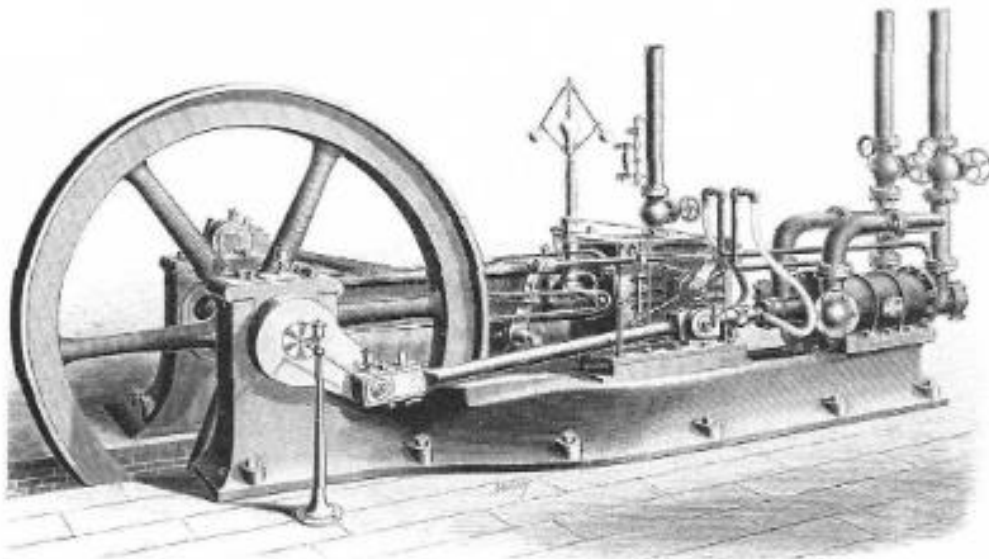
— MANUFACTURED BY —
 WHITEHILL ENGINE & PICTET ICE MACHINE CO.

WE DO NOT USE AMMONIA.

Pictet Machines use Anhydrous Sulphurous Oxide, a chemical noted for its low working pressure, is of itself a lubricant, and does not injure any of the metals; its low pressure is a guarantee against explosion.



NEW YORK BOARD OF THE ENGINEERS,
 BUREAU OF SURVEYS,
 JAMES HARRISON, Esq.,
 Board Building, 15-20 Broadway, Room 11,
 NEW YORK, January 20, 1905.
 THE PICTET REFRIGERATING MACHINES, (LONDON), NEW YORK,
 HARTFORD. Your favor of the 23rd inst. is at hand. In reply, the en-
 gineers of PICTET and WHITEHILL REFRIGERATING MACHINES, (LONDON),
 the cities of New York and Hartford, respectively, advise as a rule and to the
 advantage of all persons, the accuracy of the PICTET TEST, in
 their use. Yours truly,
 JAMES HARRISON, Esq.



Working Pressure from 50 to 75 lbs.

We guarantee GREATER ECONOMY OF FUEL, doing the same amount of work with less coal than any machine in the market.

FOR LIST OF REFERENCES AND FURTHER PARTICULARS, ADDRESS

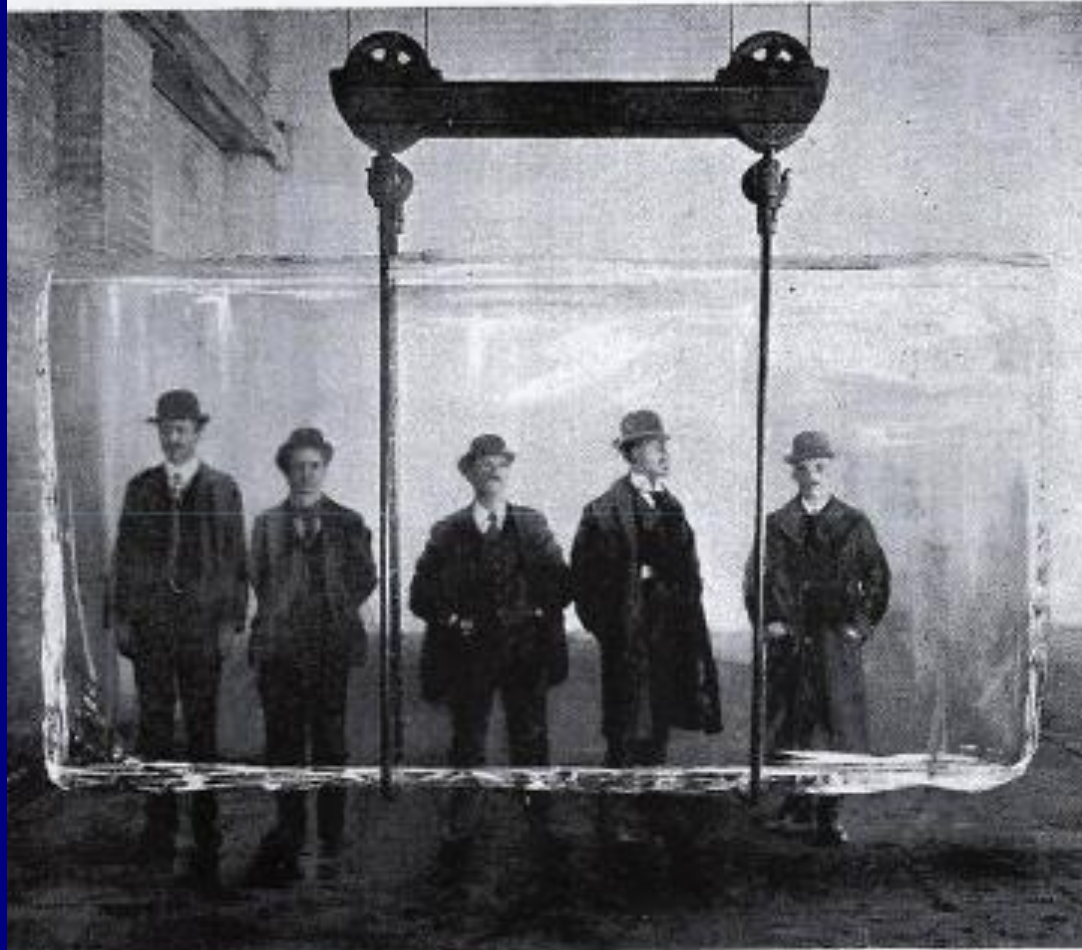
WHITEHILL ENGINE & PICTET ICE MACHINE CO.

WORKS: NEWBURGH, N. Y.

New York Office, 21 Cortlandt St., Room 6.

PLIABLE PLATE ICE, NEW YORK

United States Pliable Plate Ice Co.



PICTURE OF ICE CAKE MADE BY OUR SYSTEM

Purity *Economy* *Quality*

**COST OF ICE 50 CENTS PER TON
TIME OF FREEZING 50 HOURS**

Address, 170 Broadway, New York

PULSOMETER ENGINEERING, READING

iii

ADVERTISEMENTS.

ICE

*Our Machines are
strong, efficient
and easy to erect
and manage.*

—
AND AT
61 & 63, Queen
Victoria Street,
E.C.

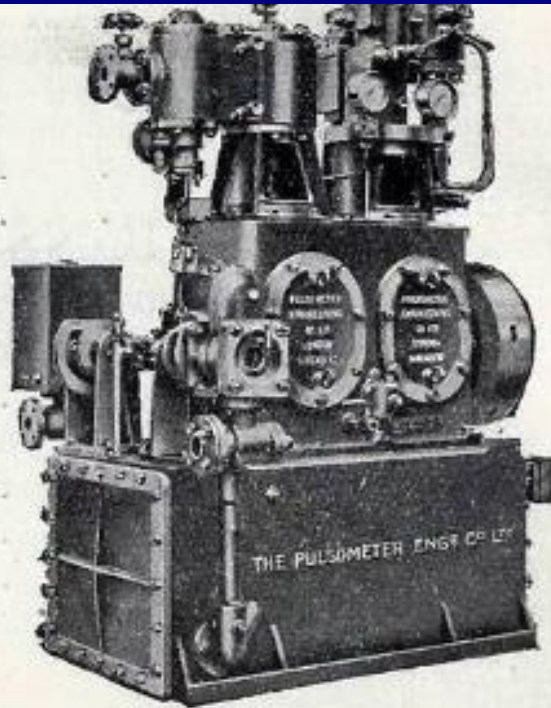
Very
successful
in hot
climates as
well as at home.

WRITE FOR
LIST No. 125.

Pulsometer Engineering Co., Ltd
Nine Elms Ironworks, Reading.

COLD STORAGE

PULSOMETER ENGINEERING, READING



Self contained Ice Machine

Ice Making & Refrigerating Machinery

On the N.H₃ & CO₂ Systems

OUR machines have been specially designed to give the least possible amount of trouble in working and to secure a minimum of repairs. Proof of our claims is found in the repeat orders we receive.

WRITE FOR LIST NO. 900

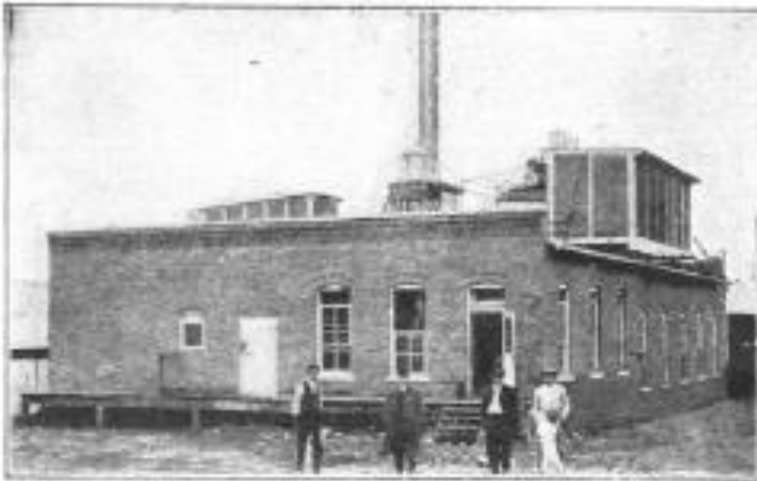
Pulsometer Engineering Co. Ltd

11 Tothill Street
LONDON, S.W.1

Nine Elms Ironworks
READING

HENRY VOGT MACHINE, LOUISVILLE

MONEY MAKING MACHINERY

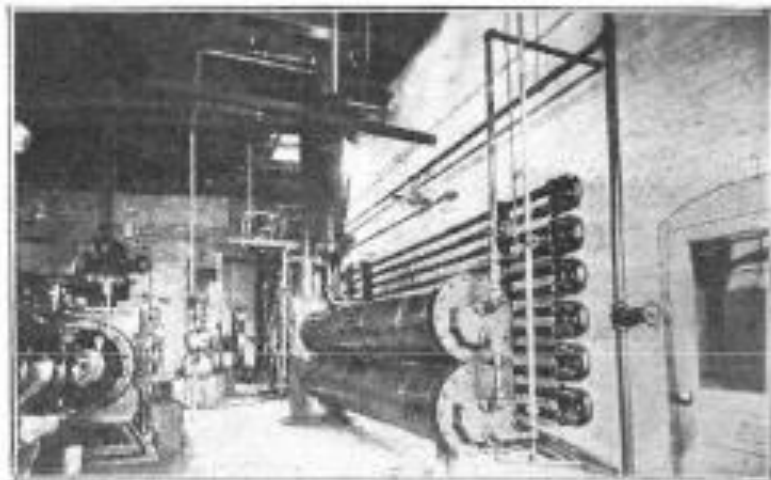


Plant of Lewisburg Light & Power Co., Lewisburg, Tenn.

Combine with your
Electric Machinery a
Vogt Absorption
Ice Making Machine
and
Use your Exhaust
Steam.

This is one of
a Lot of Combined
Plants.

Every One Making
Money since
adding Absorption
Machine.



The Vogt Machine takes Little Room.

Our Latest: Horizontal Tubular Brine Coolers and Condensers

HENRY VOGT MACHINE CO.

(INCORPORATED)

Louisville, Ky., U. S. A.

12" Vogt Water Tube Boilers
will make an Ideal Plant.

Write for Catalogues

HENRY VOGT MACHINE, LOUISVILLE



BEYOND *the* REACH of COMPETITION

If you are in the market for ice and refrigerating machinery, consider three things—

Simplicity Efficiency and Economy

Henry Vogt Ice Machinery offers you these three things.

Simplicity, because it has only one moving part, the ammonia circulating pump, running 26 revolutions per minute.

Efficiency, because Vogt machines are built on the right principles—the Absorption System—the system which we have proved to be absolutely the best and most reliable, both for high and low temperatures.

Economy, because the Vogt machine will do more than its rated capacity the entire year; do it with less expense and less repairs.

Write us for information.

Henry Vogt Machine Co.

Louisville, Ky.

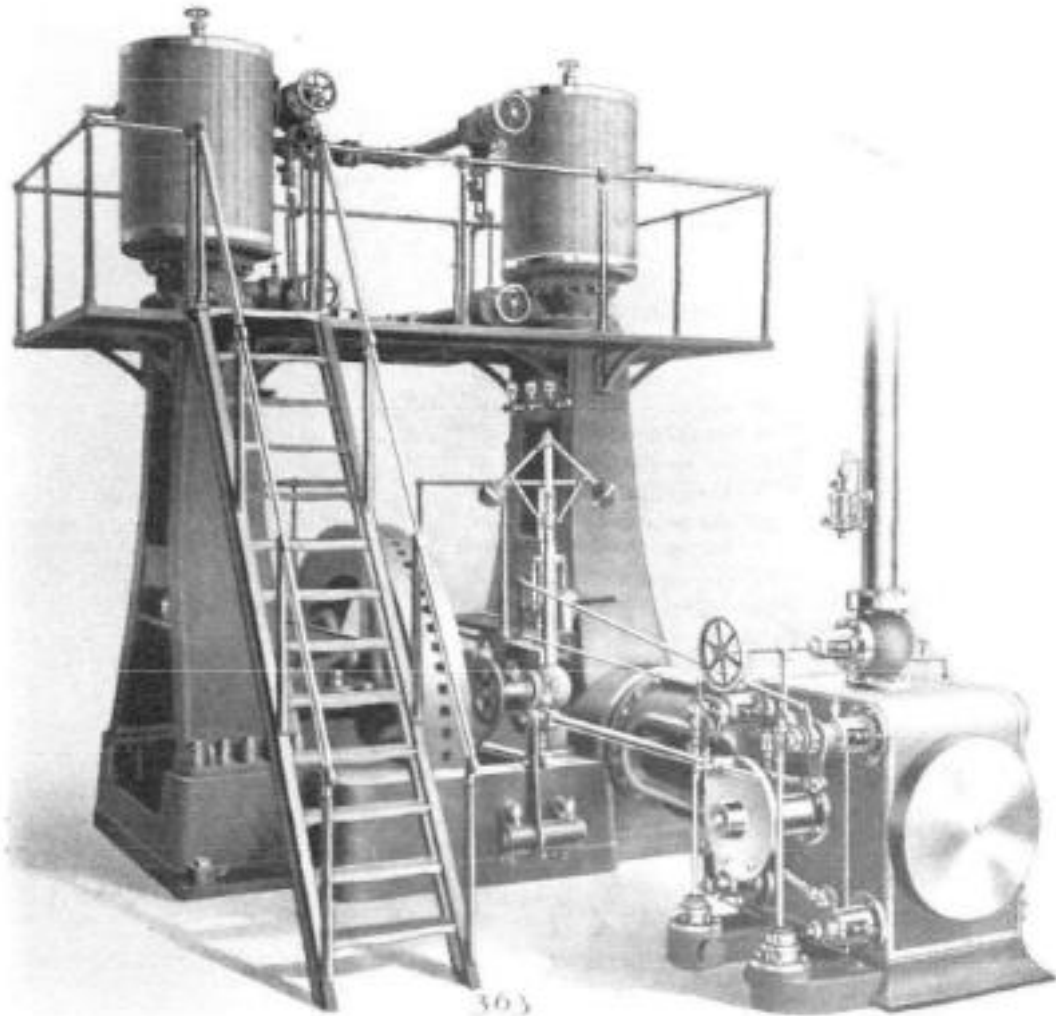
YORK MANUFACTURING, PA

YORK MANUFACTURING CO.
YORK, PENNSYLVANIA, U. S. A.

Bulletin No. 19

September, 1907

Vertical Single-acting Ice Making and Refrigerating Machine

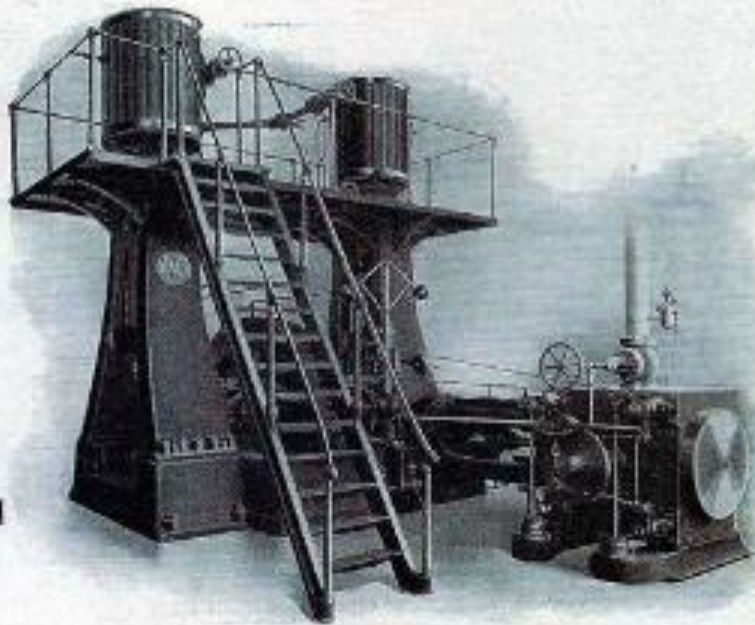


125-ton Refrigerating Machine.

Compressors—18" bore, 28" stroke.

Steam Cylinder—26" bore, 28" stroke.

YORK MANUFACTURING, PA



The Combination With a Reputation

The results of years of experimenting and carefully kept records are all embodied in the justly famous

YORK

Ice-Making and
Refrigerating Machinery

—and—

Ammonia Fittings

You get the benefit of this experience in every product of our works you buy. Use it—don't experiment. Let us prove our claims. Write for catalog H, giving partial list of installations.

YORK MFG. COMPANY

Main Office and Works, YORK, PA.

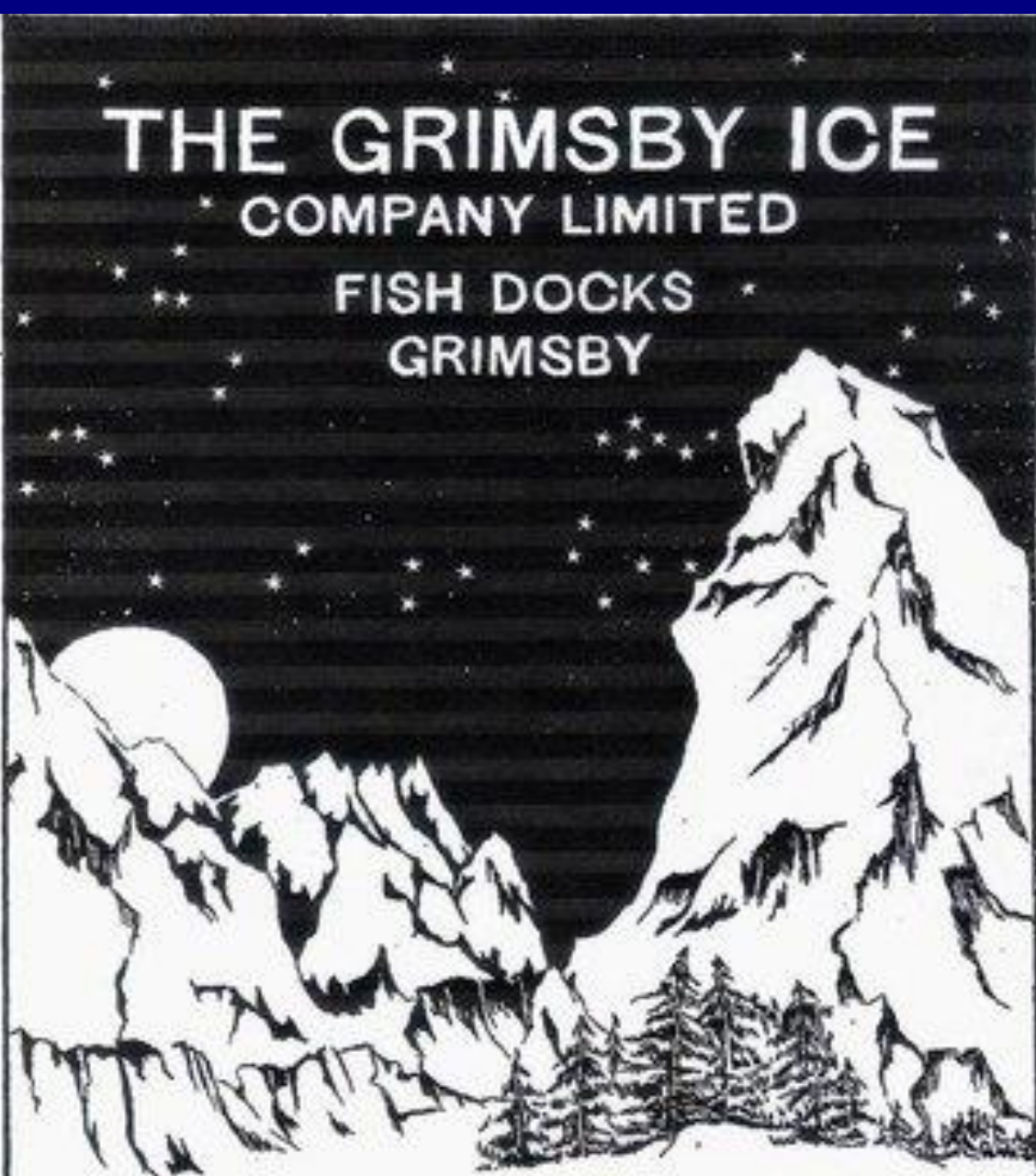
General Western Office, CHICAGO

BRANCH OFFICES: Boston, New York, Philadelphia, Pittsburgh, Cincinnati, St. Louis, Dallas, San Francisco, Atlanta.

OUR AMMONIA FITTINGS are carried in stock at
 Geringer-Bayer Co., 20 W. Ninth St., Cincinnati, O.; Geo. T. Matthews & Co., 28 S. Main St., St. Louis, Mo.; York Manufacturing Co., 35 Park Place, New York City; M. Hirschmann & Sons, 315 House Bldg., Pittsburgh, Pa.; Colton States Refrig. & Supply Co., 7 S. Canal St., Atlanta, Ga.; Adams & Ott Mfg. Co., Duress and St. Joseph Sts., New Orleans, La.



THE GRIMSBY ICE FACTORY



**THE GRIMSBY ICE
COMPANY LIMITED**

**FISH DOCKS
GRIMSBY**

**LARGEST ICE FACTORY
IN THE WORLD**

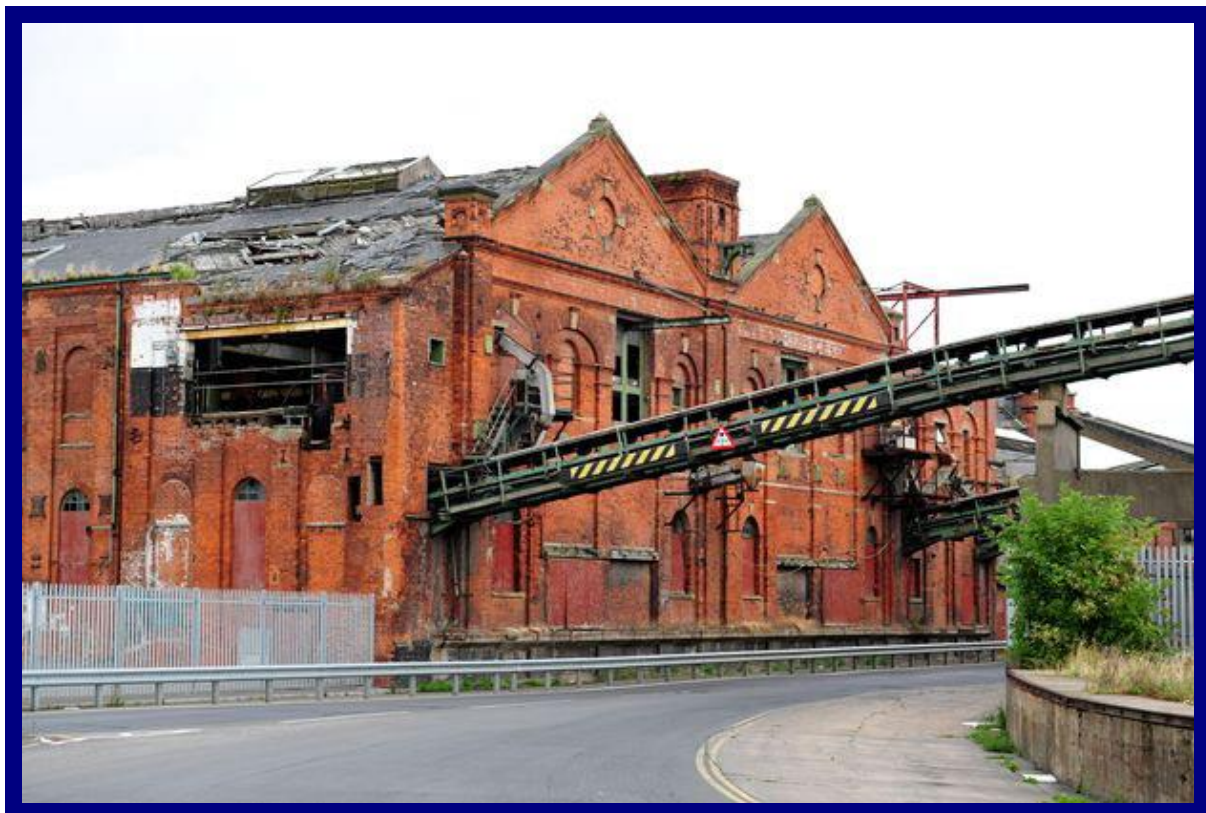
Capacity—1,200 Tons per Day.

F. A. FLEMING, General Manager.
W. R. HUMPHREY, Secretary.

Ice Factory Telephone: 2009.
Telegrams: "Zero, Grimsby."

Cold Stores Telephone: 2071.
Telegrams: "Ice, Grimsby."

THE GRIMSBY ICE FACTORY



THE GRIMSBY ICE FACTORY



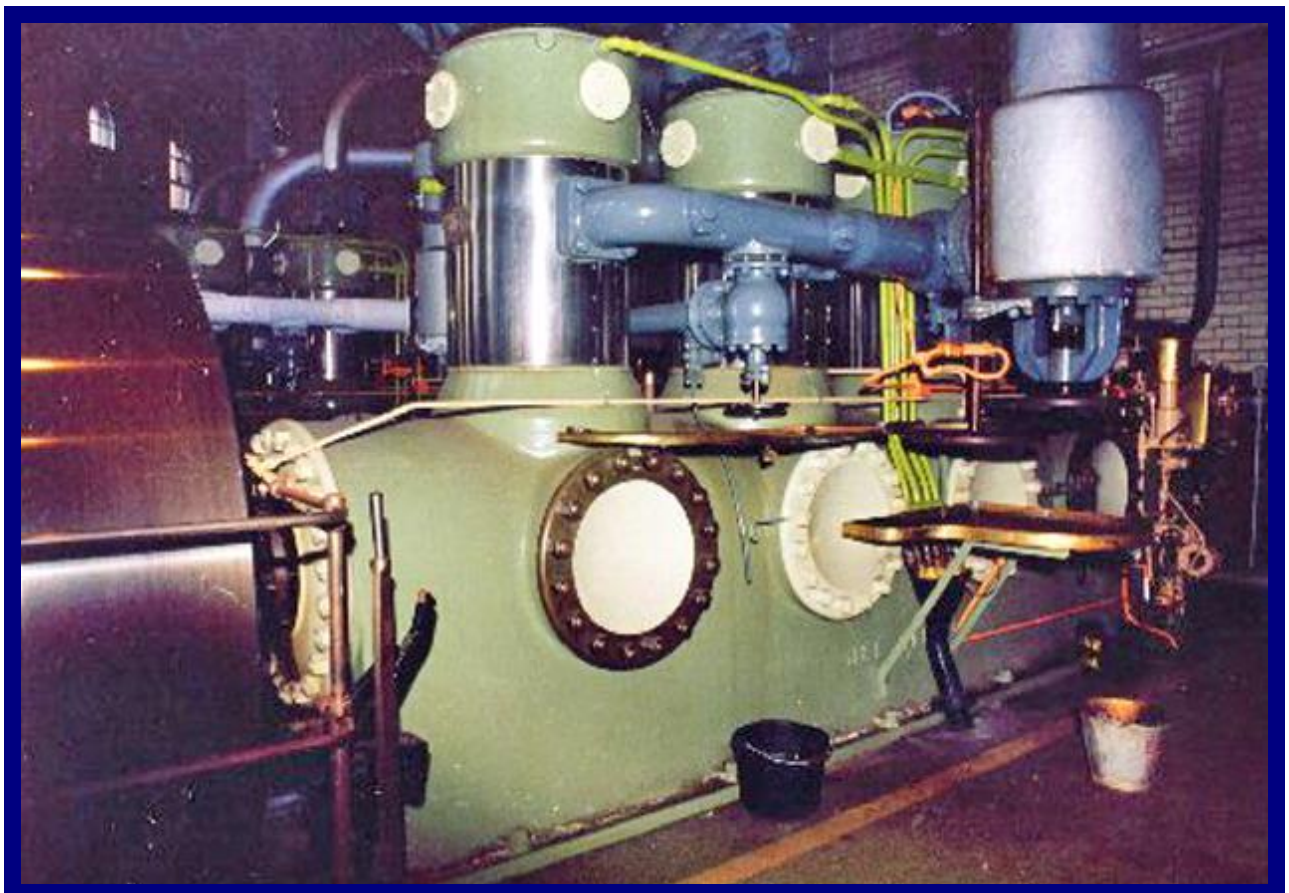
THE GRIMSBY ICE FACTORY



THE GRIMSBY ICE FACTORY



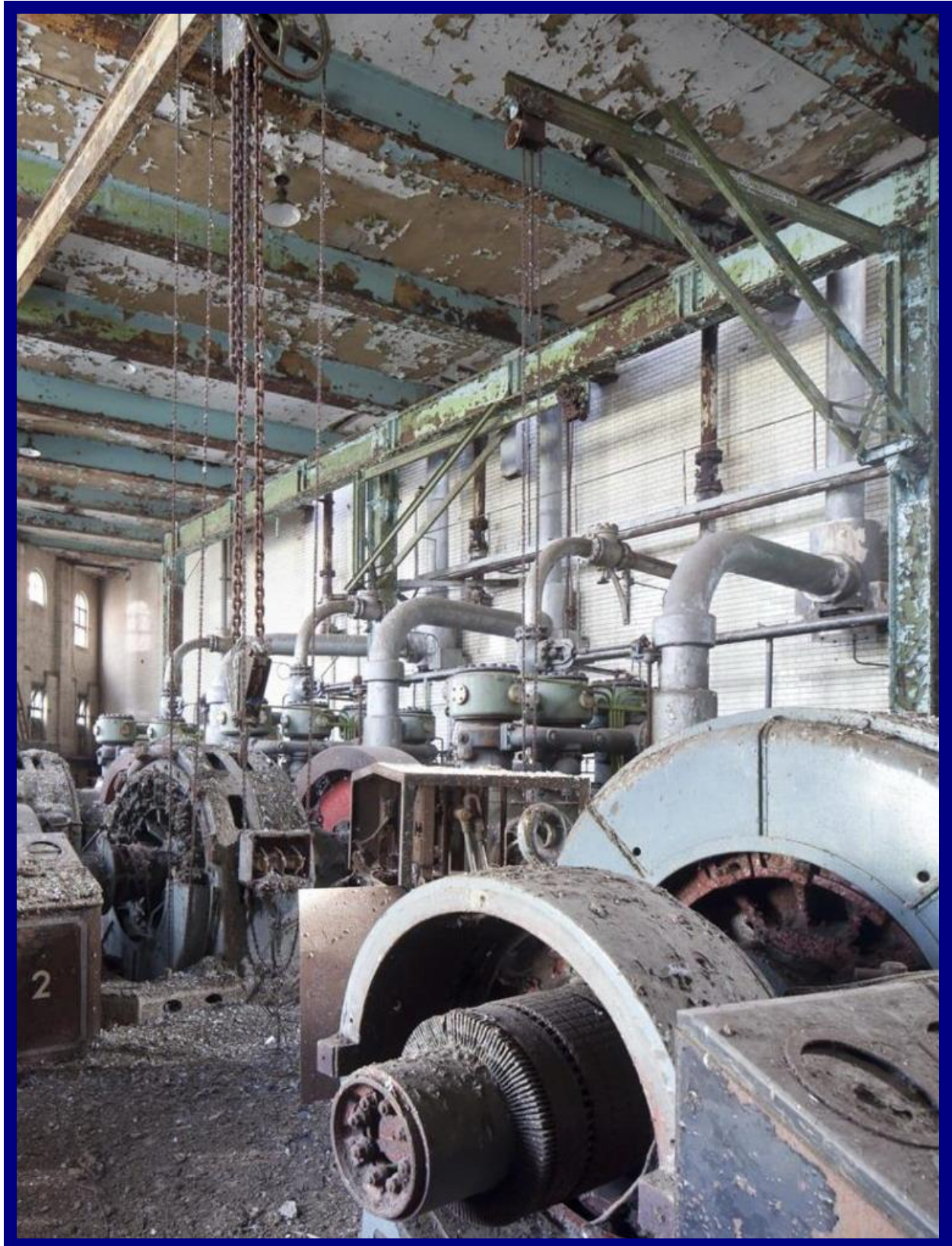
THE GRIMSBY ICE FACTORY



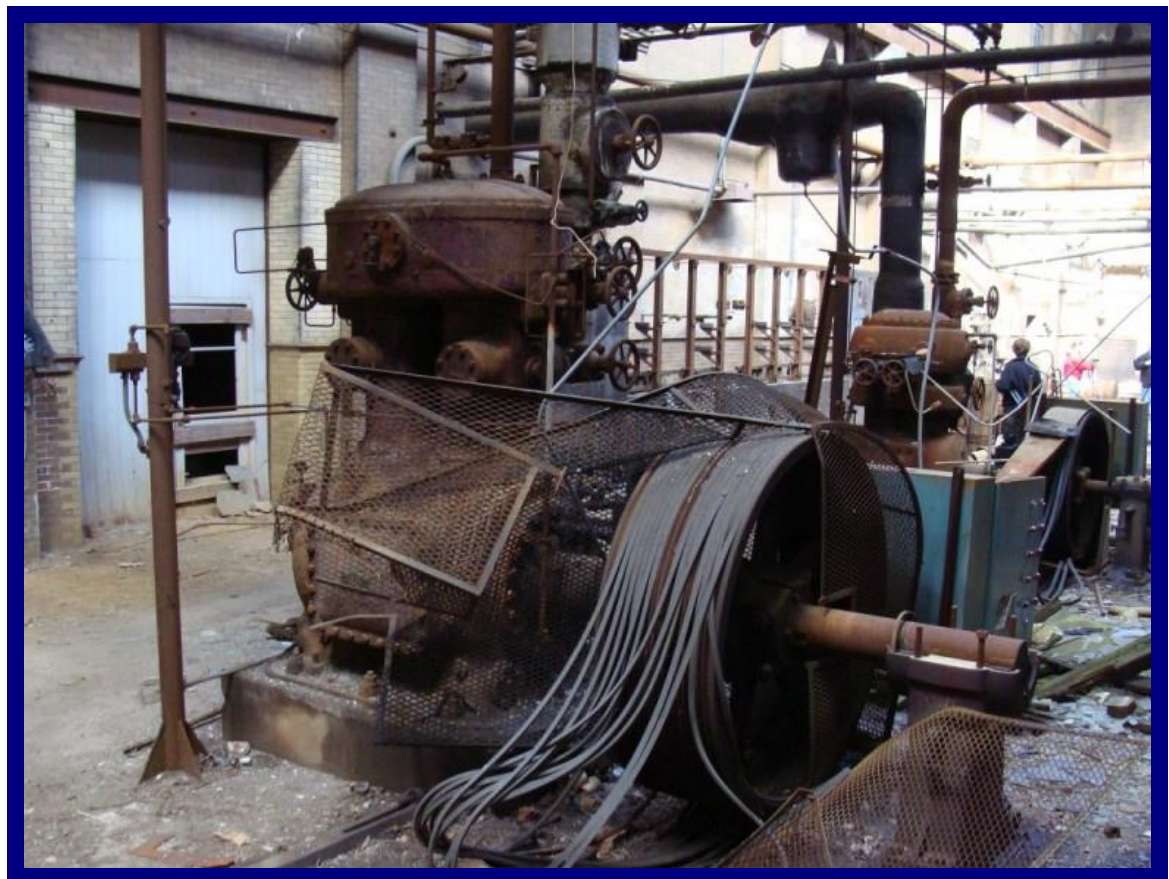
THE GRIMSBY ICE FACTORY



THE GRIMSBY ICE FACTORY



ARMOUR MEAT PLANT, ST LOUIS, MO.



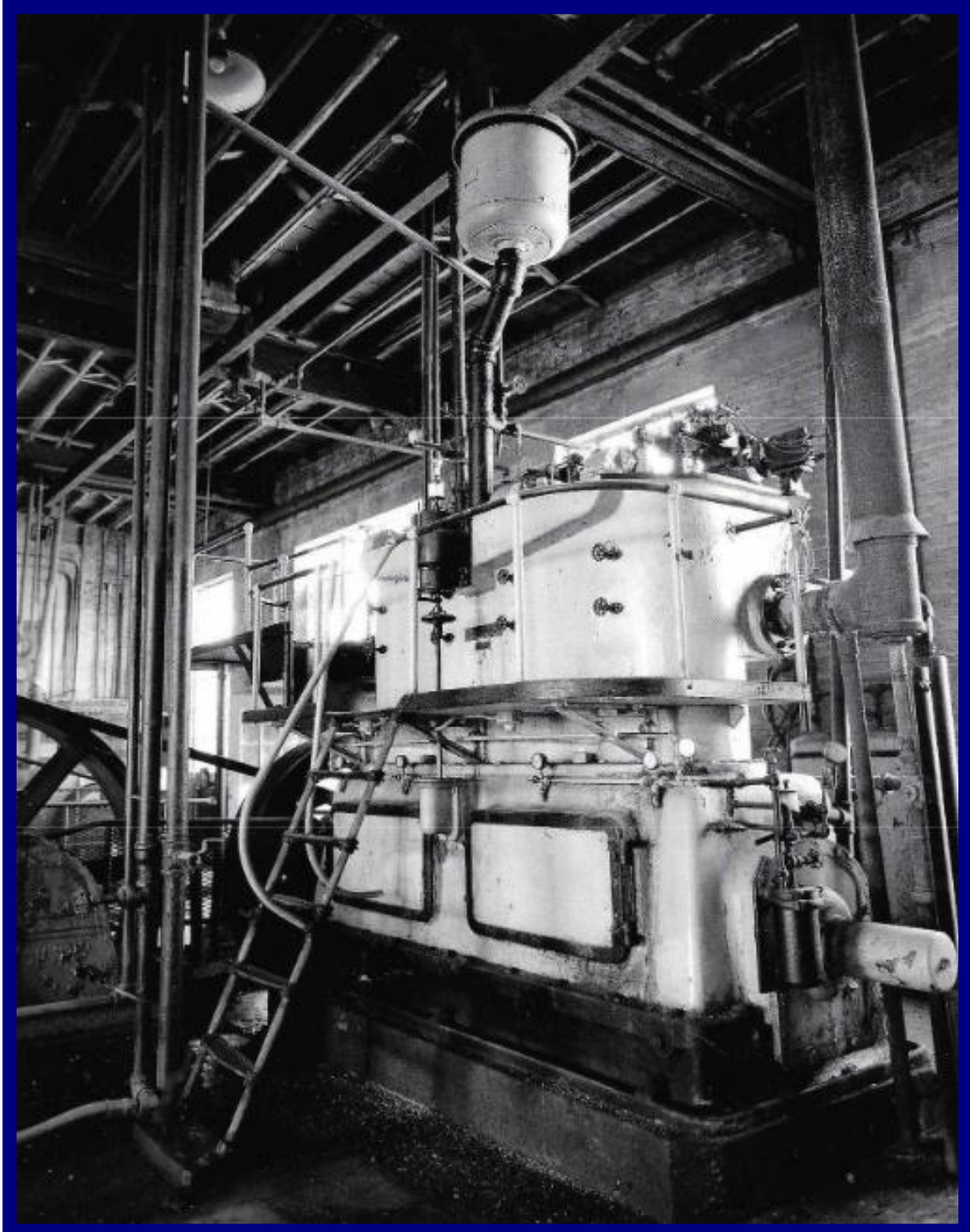
ARMOUR MEAT PLANT, ST LOUIS, MO.



ARMOUR MEAT PLANT, ST LOUIS, MO.

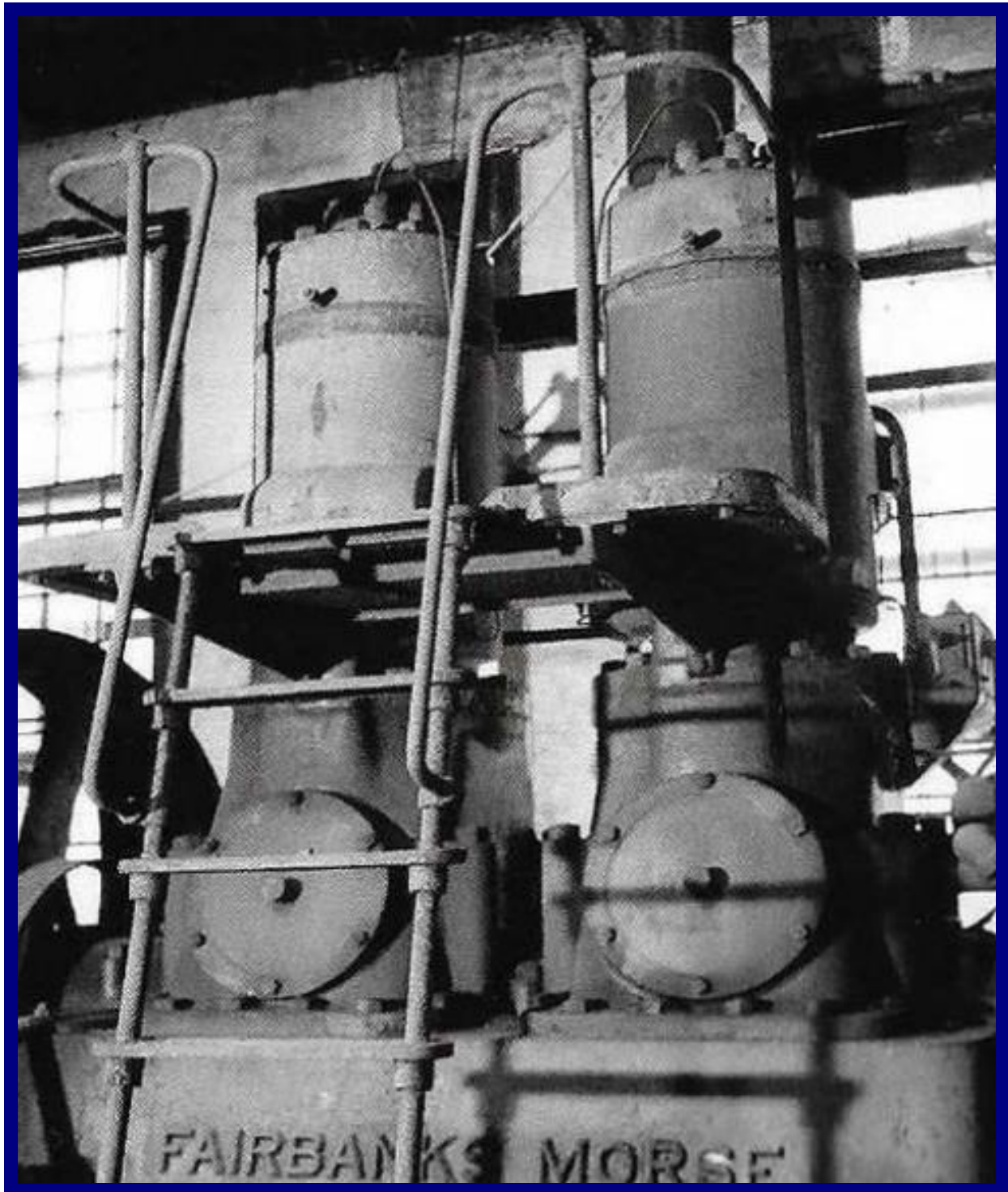


COOLING THE SOUTH



Diesel driving refrigeration compressor

COOLING THE SOUTH



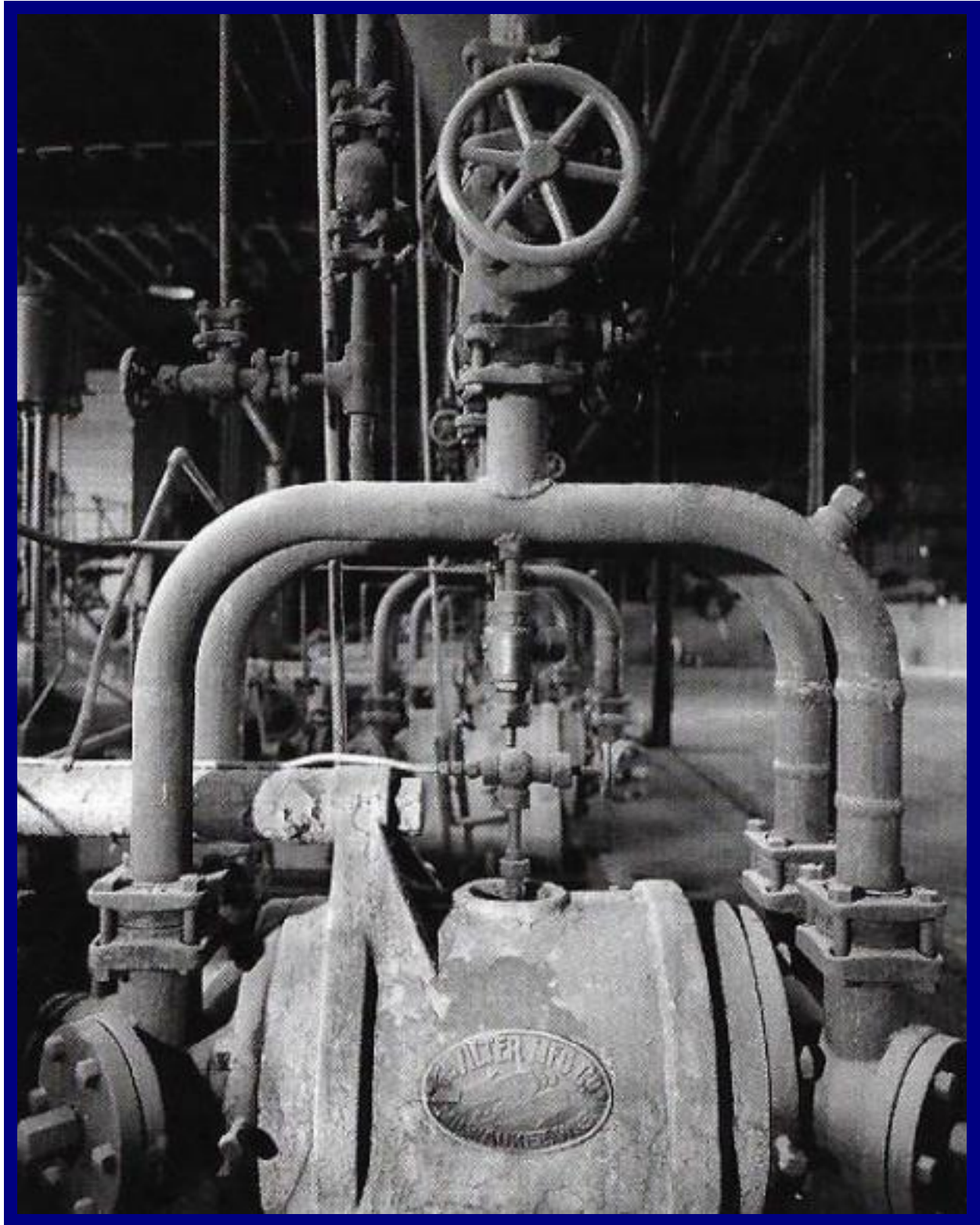
Fairbanks Morse diesel driving refrigeration compressor

COOLING THE SOUTH



Diesel engine with cover removed

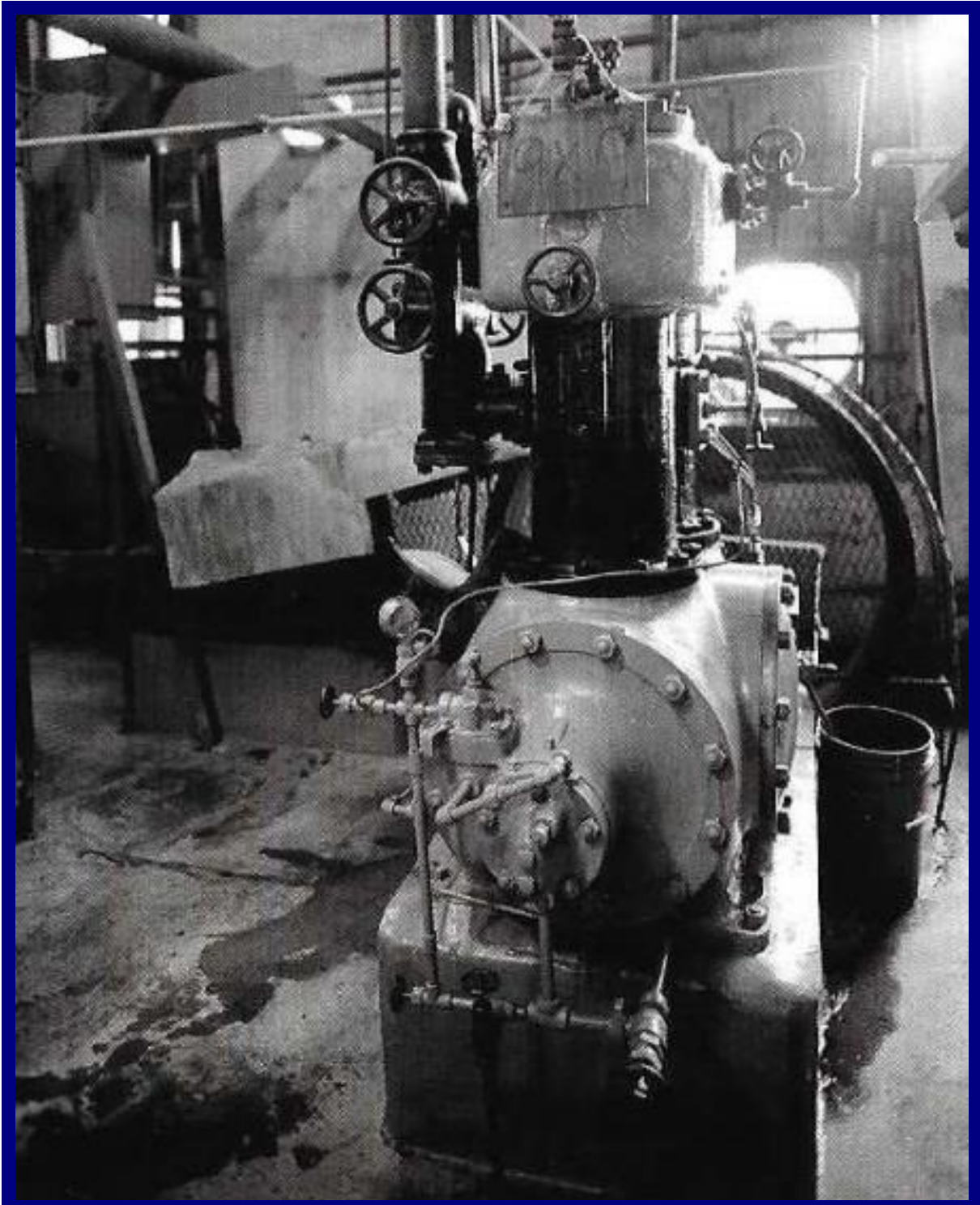
COOLING THE SOUTH



Vilter Manufacturing refrigeration compressor

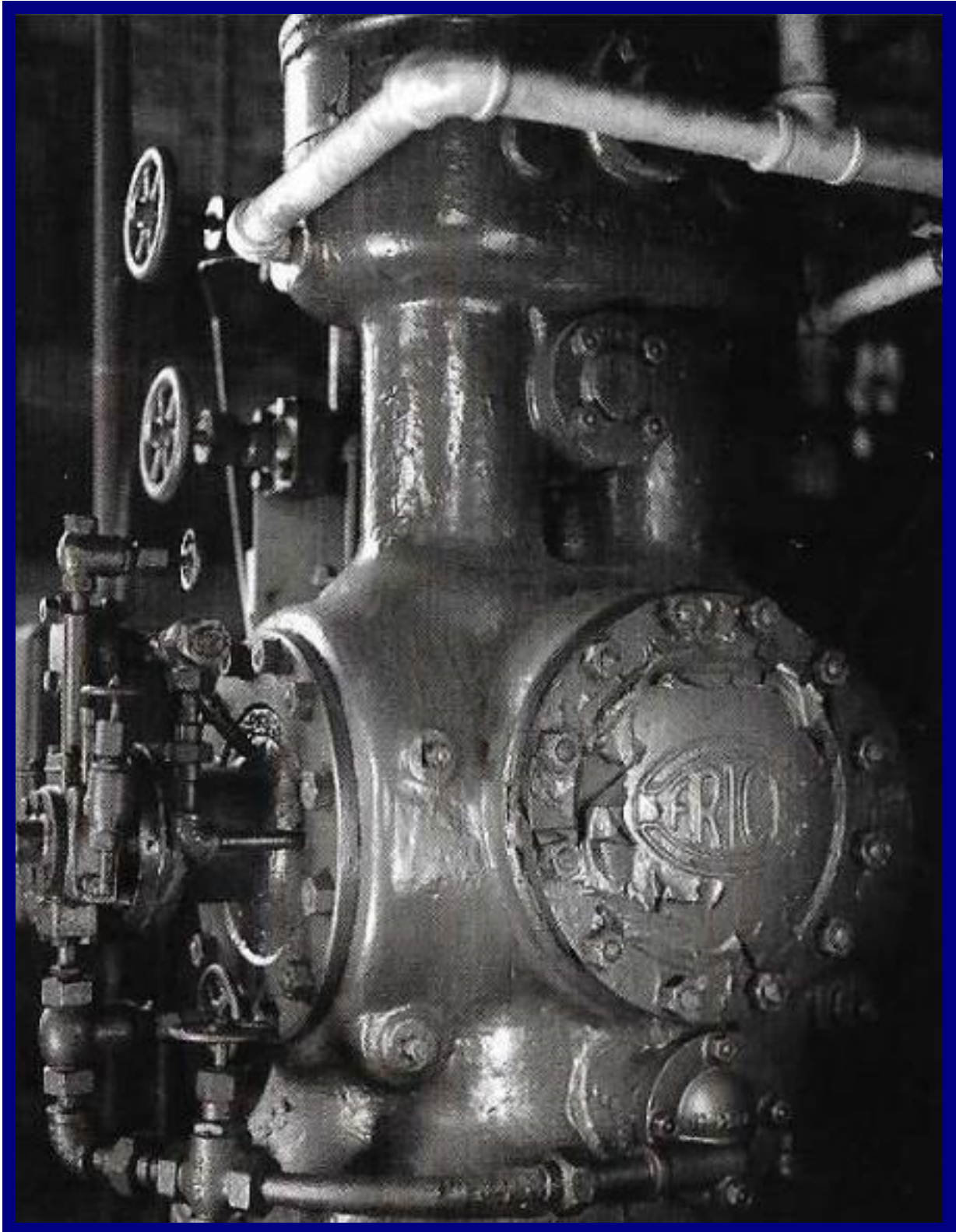
<41>

COOLING THE SOUTH



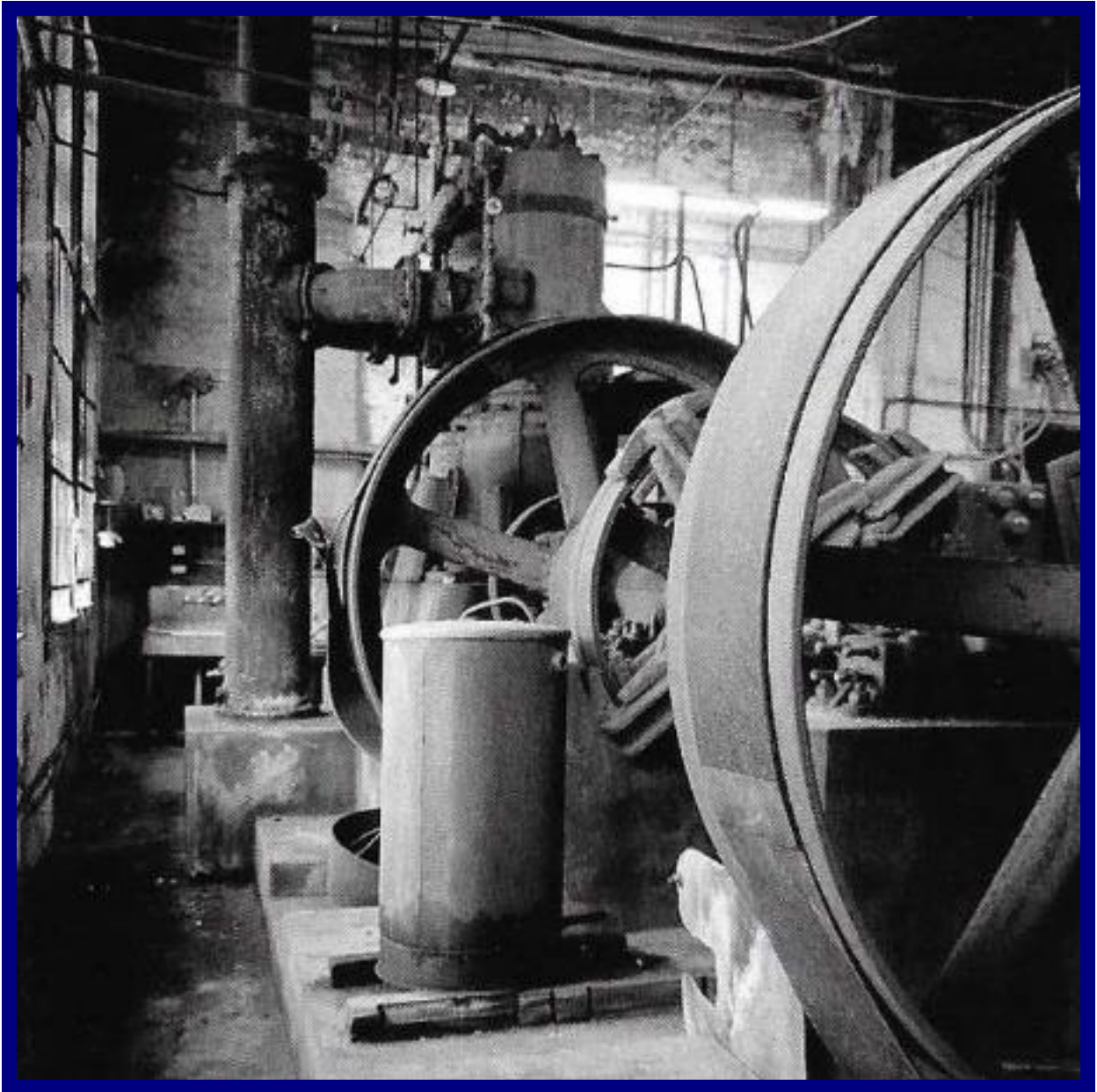
Refrigeration plant

COOLING THE SOUTH



Frick Company refrigeration plant

COOLING THE SOUTH



Refrigeration plant

BREWERY CELLARS COOLING

Cross-section of refrigerating plant for brewery, with fermenting and cooling cellars attached, showing the direct expansion system.

