



1933 Postcard: Central Park in New York (l-r) Hotel Pierre (built 1930), Sherry-Netherland (1927), Savoy Plaza (1927), Plaza 1907).

HISTORIC GRAND HOTELS

THE HOTEL MACHINE

PART TWO: THE UNITED STATES

BRIAN ROBERTS

<2>

LEXINGTON HOTEL, NEW YORK



1929: 316 ft, 28 floors, 725 rooms.

CONTENTS



1927: The Royal Hawaiian Hotel (Pink Palace), Waikiki Beach, Honolulu, 528 rooms.

By 1893, Grand Hotels in New York City were being constructed with iron and steel frames, but hotels posed engineering problems that were different to high-rise office buildings, including fire safety, while the large open interior spaces required wide-span framing and massive girders or trusses. In addition, the range of engineering services (like plumbing, heating, ventilation, electrical, communications and later air conditioning) together with kitchens, laundries, food and drink stores, and waste disposal, exceeded those of the office block.

THE HOTEL MACHINE

The Waldorf Astoria Hotel (Diagram): 4, Steam supply: 5, Kitchens: 6,30,43,
Engine Room: 5, Laundry: 7,30, Bakery: 7,43, Telephones: 6

NEW YORK HOTELS

Alconquin: 8, **Ambassador:** 9, **Astor:** 10, **Belmont:** 12, **Biltmore:** 13, **Commodore:** 14,
Hilton: 15, **Knickerbocker:** 16, **Lexington:** 2,17, **Manhattan:** 18, **McAlpine:** 19,
New Netherland: 20, **Paramount:** 21, **Pennsylvania:** 22, **Pierre:** 1,23, **Plaza:** 1,24,
Savoy: 1,24, **Sherry Netherland:** 1, **St Regis:** 25, **Vanderbilt:** 26, **Wolcott:** 27,
Waldorf: 28, **First Waldorf-Astoria:** 29, **Waldorf Astoria:** 30

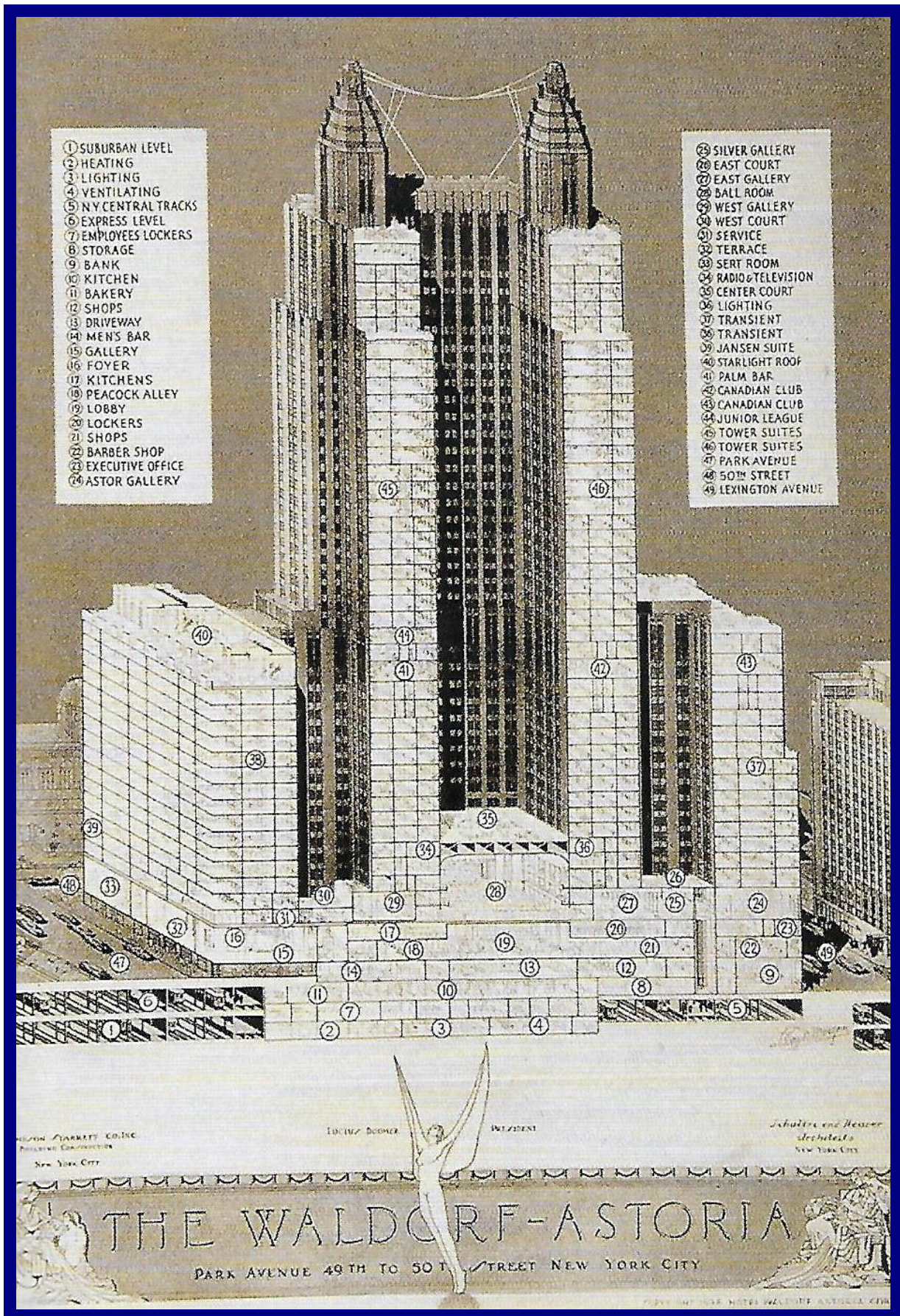
FLORIDA AND OTHER STATES HOTELS

Biltmore, Coral Gables: 32, **Breakers,** Palm Beach: 34, **General Oglethorpe,** Savannah: 36,
Lido Club, Long Beach Barrier Island: 37, **Montauk Manor,** Long Island: 38,
Nautilus, Miami Beach: 40, **Roosevelt,** Hollywood: 44,
Royal Hawaiian, Honolulu: 3, **Tampa Bay,** Tampa: 42

I have stayed in or visited hotels named in bold.

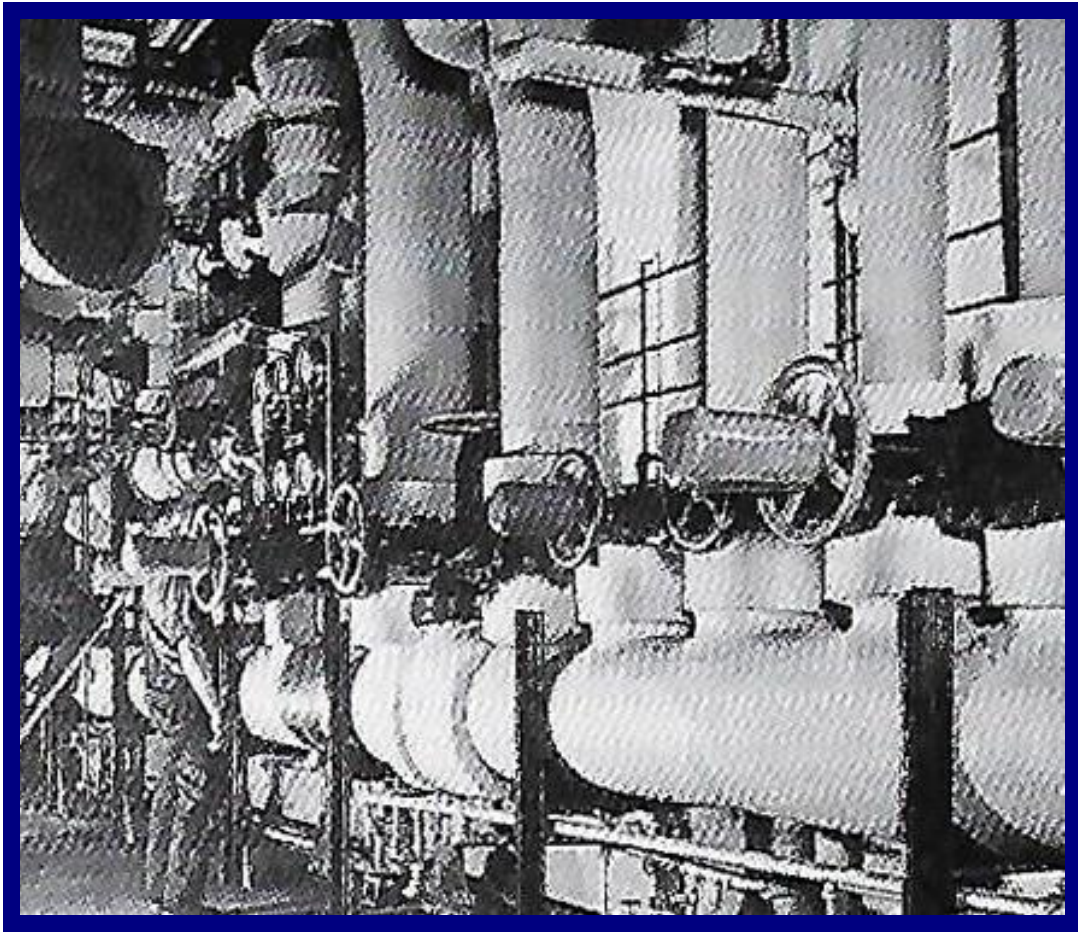
BMR, Budleigh Salterton 2021.

THE HOTEL MACHINE

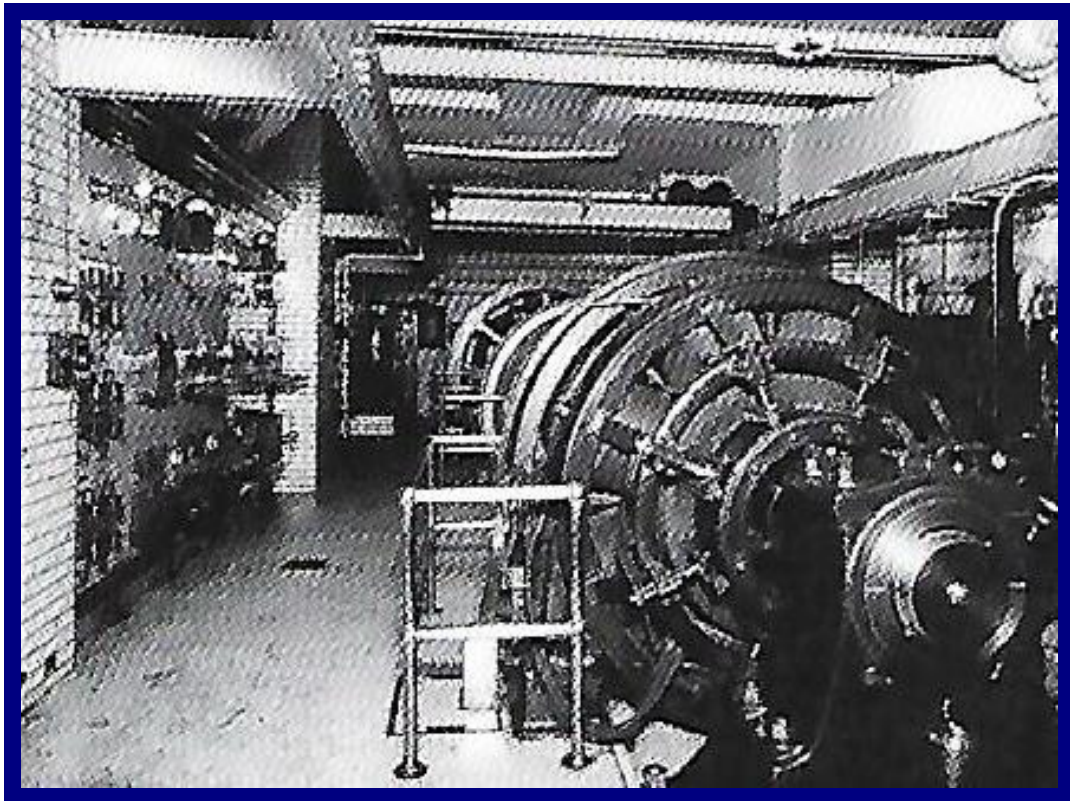


1931: The second Waldorf Astoria: 625 ft high, 47 floors, 413 bedrooms. Heating, lighting and ventilation plant rooms are in the lower sub-basement.

THE HOTEL MACHINE

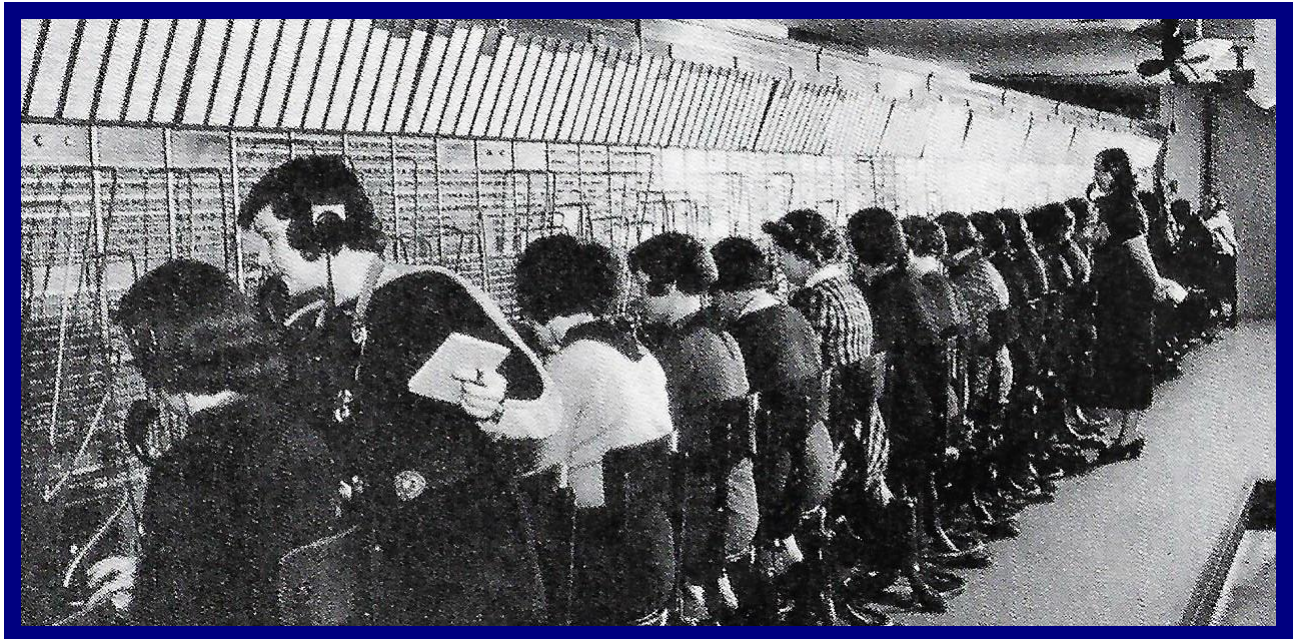


1929: Steam supply, Waldorf Astoria, New York.

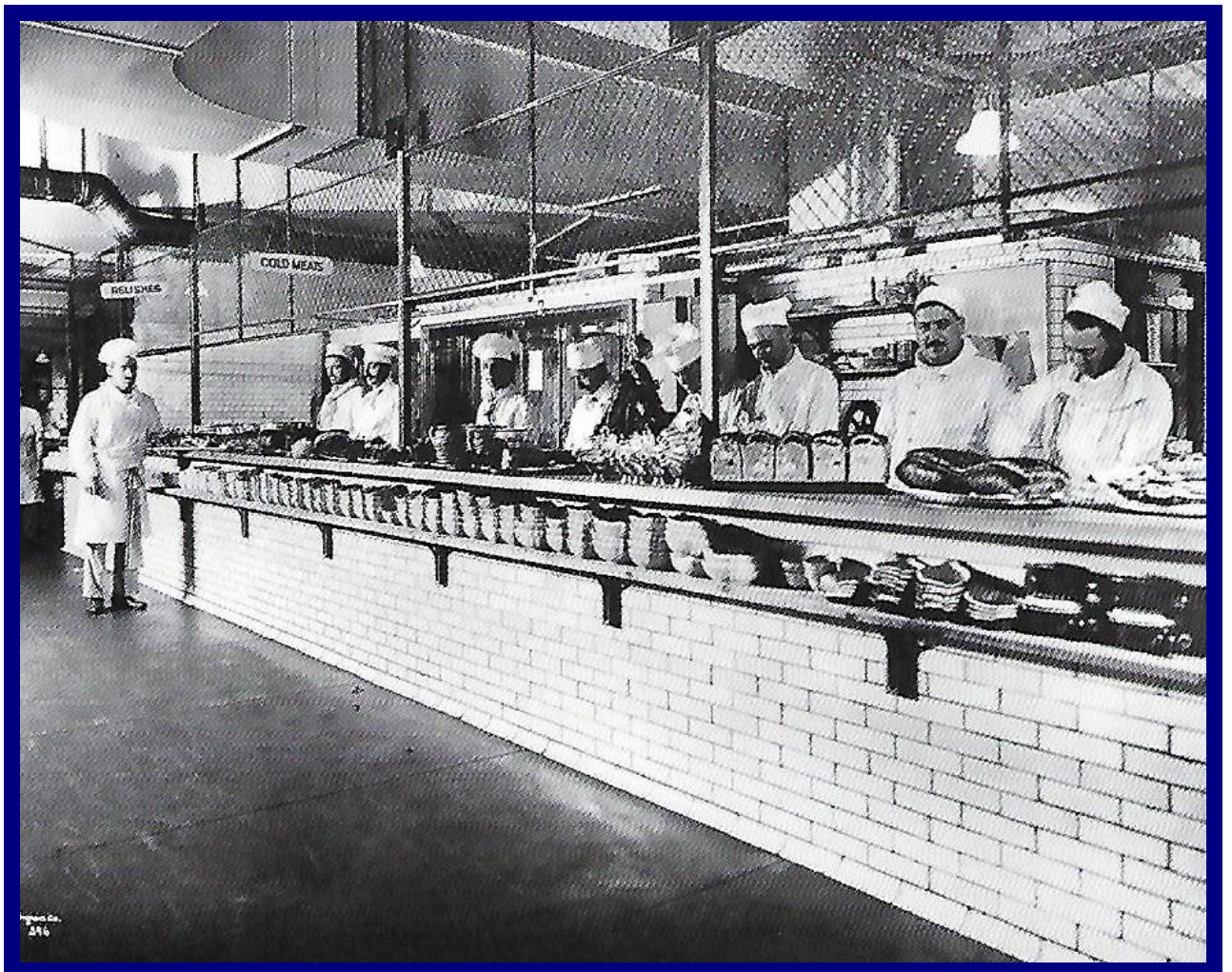


About 1906: Engine Room at the Knickerbocker Hotel, New York.

THE HOTEL MACHINE



Around 1939: Telephone switchboard at the Waldorf Astoria, New York.



1919: Kitchen at the Commodore Hotel, New York.

<7>

THE HOTEL MACHINE

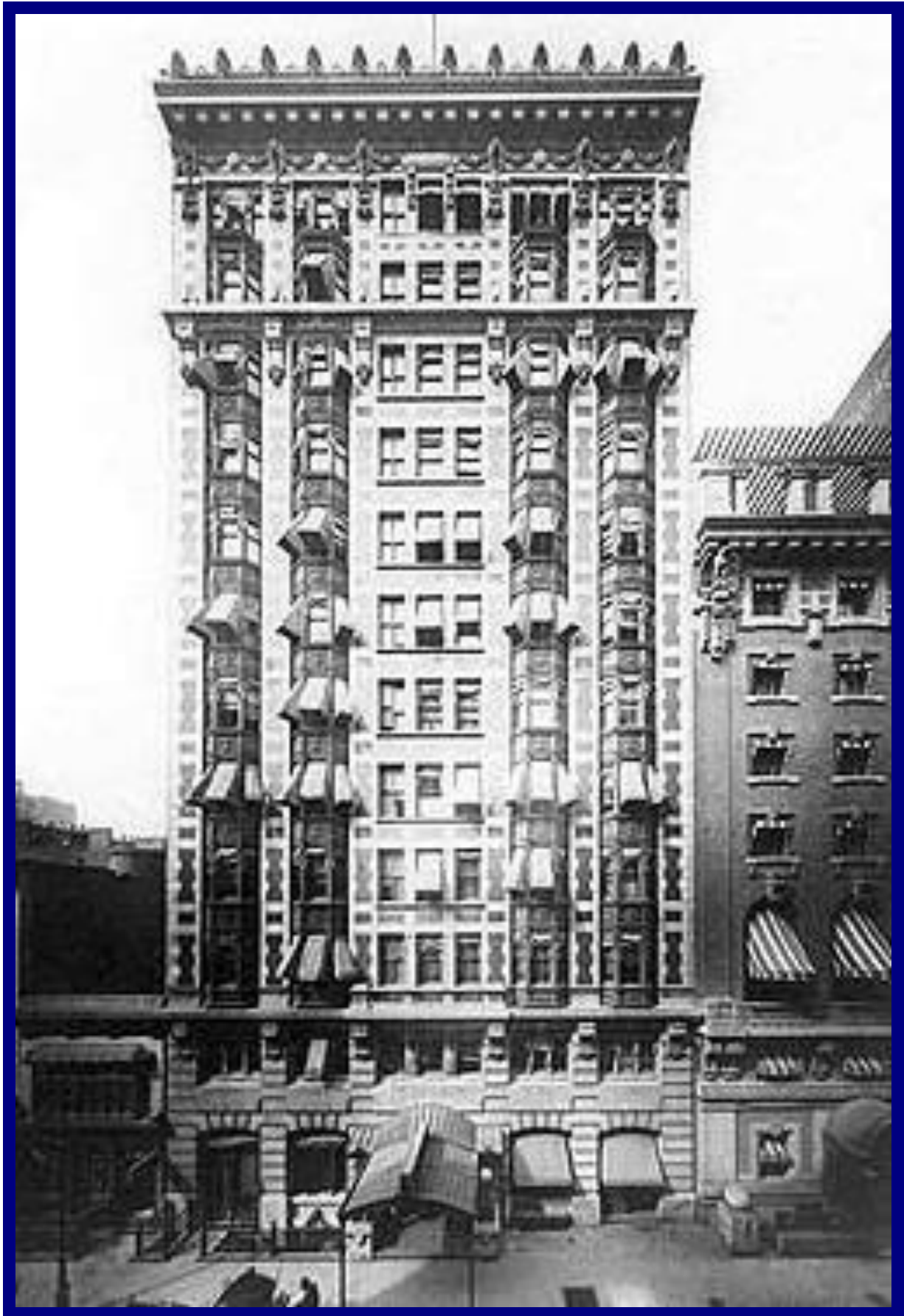


After 1906: Laundry at the Knickerbocker Hotel, New York.



About 1913: Laundry at the Biltmore Hotel, New York.

ALCONQUIN HOTEL, NEW YORK



1902: 181 rooms, noted for its Literary Round Table.

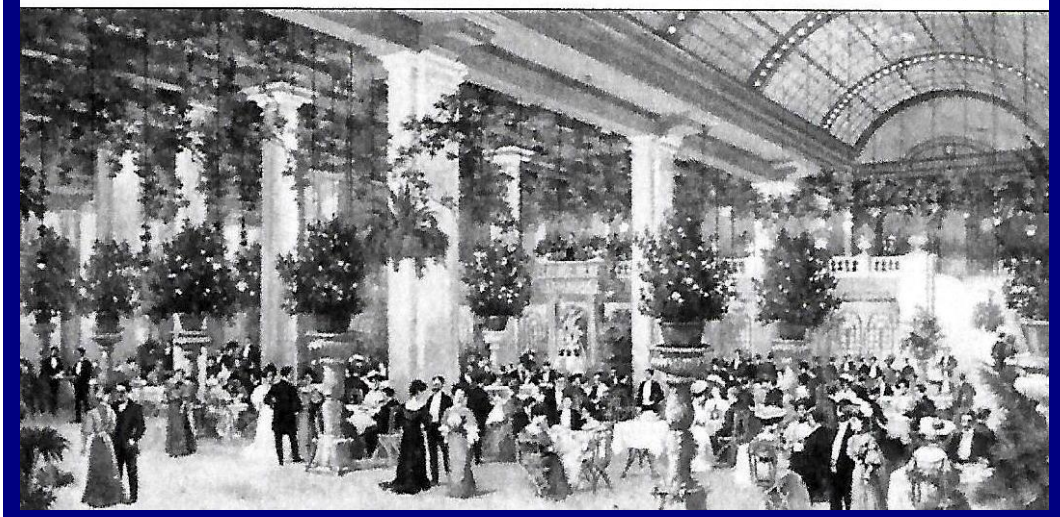
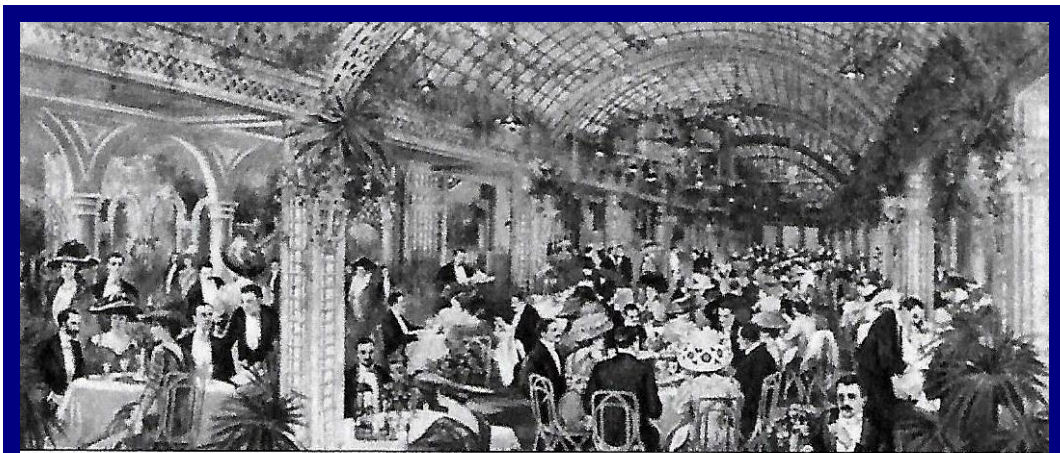
AMBASSADOR HOTEL, NEW YORK



Possibly 1901: 181 rooms, 200 ft, about 16 floors.

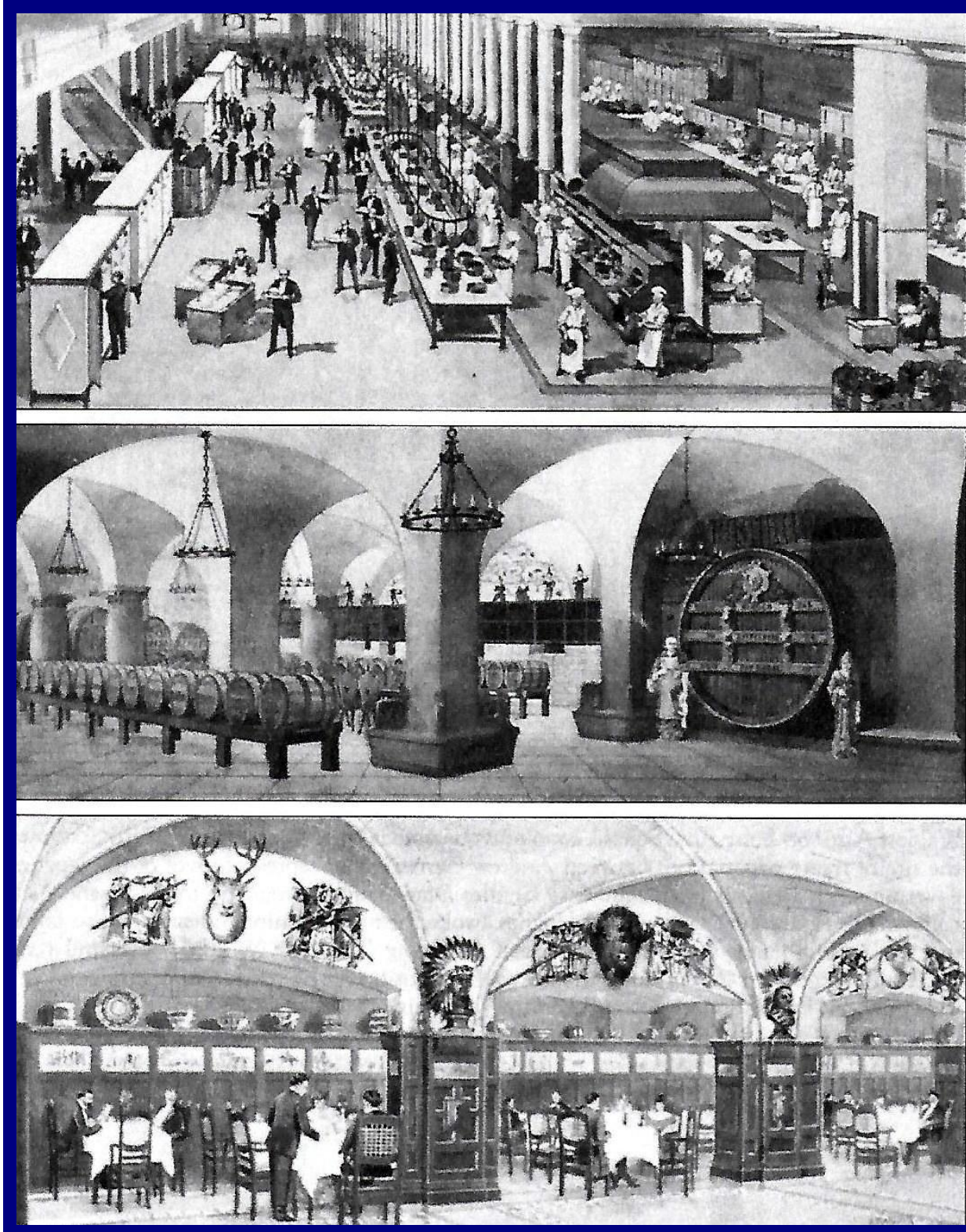
<10>

ASTOR HOTEL, NEW YORK



1903: 11 floors, 700 rooms, one of Manhattan's most fashionable night spots.

ASTOR HOTEL, NEW YORK

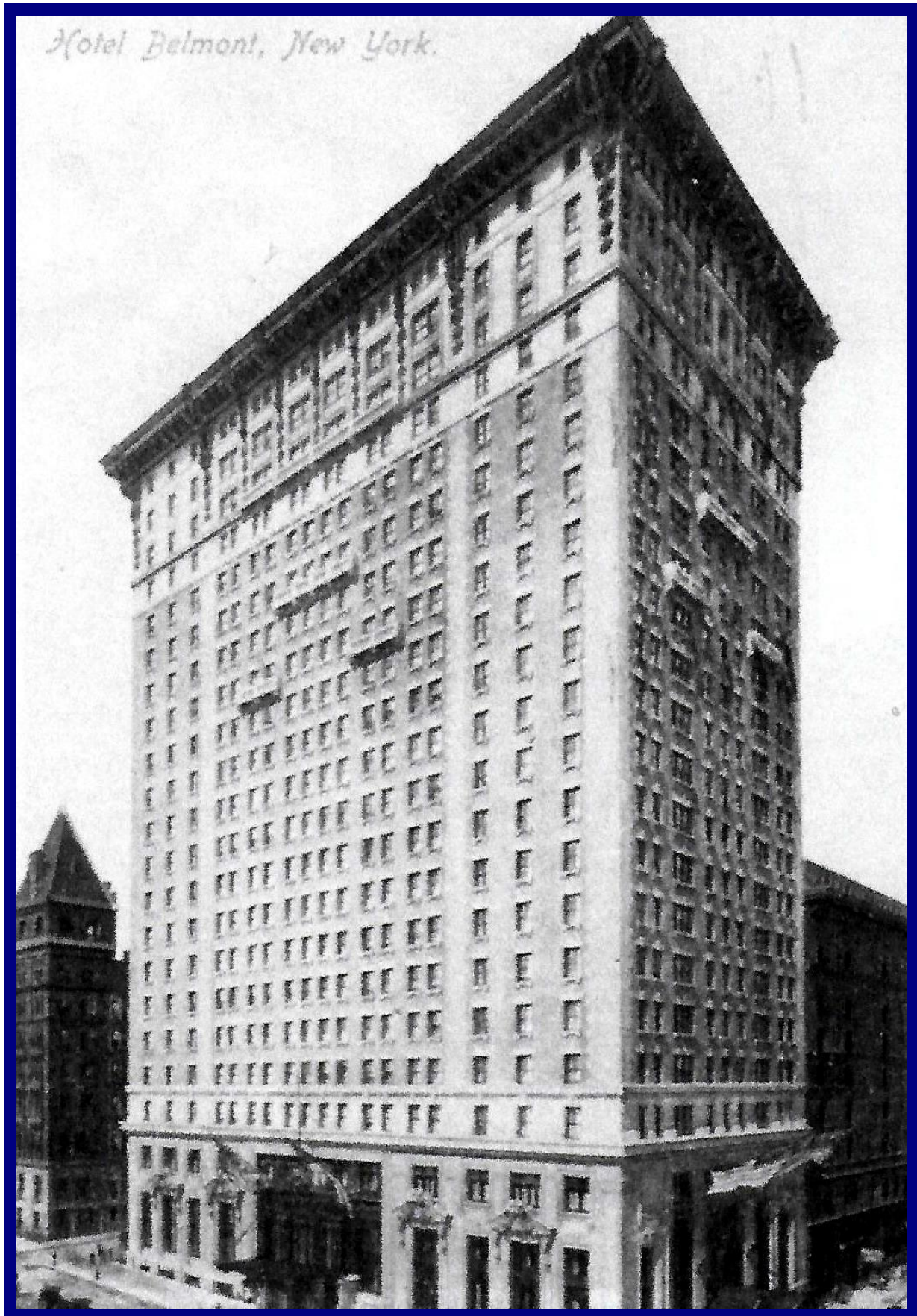


The Astor Hotel, considered one of New York's finest.
Maintained a staff-to-guest ratio of 1:1.

Illustration shows (top) the vast kitchens,
(centre) the wine vaults,
(bottom) the Indian Grill Room.

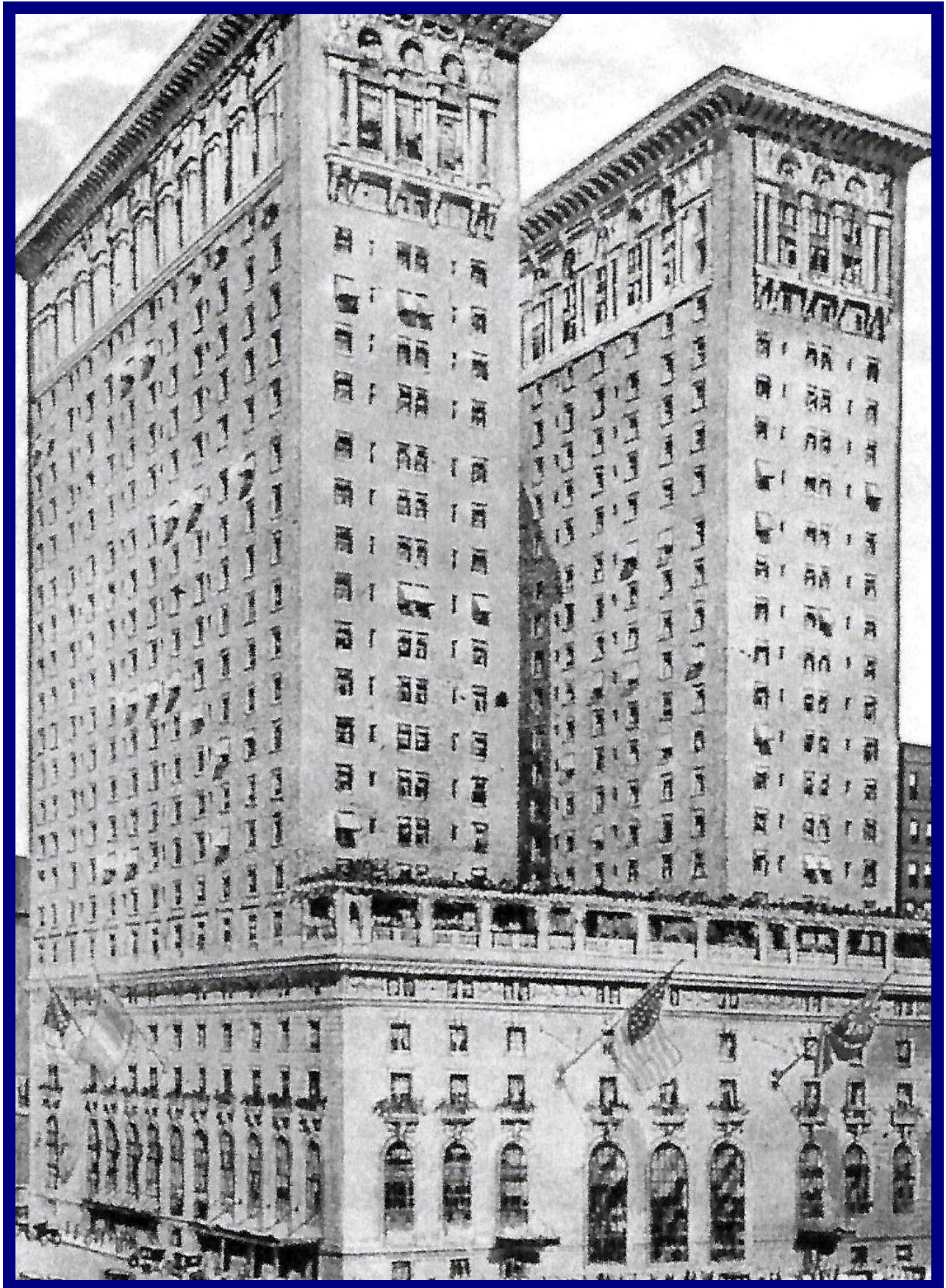
<12>

BELMONT HOTEL, NEW YORK



1906: 310 ft, 23 floors, 750 rooms, demolished 1931.

BILTMORE HOTEL, NEW YORK



1913: 24 floors, 1000 rooms, demolished 1981.

COMMODORE HOTEL. NEW YORK



1919: 295 ft, 26 floors, 2000 rooms, all with baths, ice water provided.

<15>

HILTON HOTEL, NEW YORK



1963: 487 ft, 47 floors, 2153 rooms, then largest in New York City.
Fully air conditioned when opened, but there are suggestions it needs replacing.

<16>

KNICKERBOCKER HOTEL, NEW YORK



1906: 316 ft, 15 floors, 556 rooms, converted to offices in 1920.

<17>

LEXINGTON HOTEL, NEW YORK



1929: 316 ft, 28 floors, 725 rooms.

<18>

MANHATTAN, NEW YORK



1896: 250 ft, 14 floors, for short time said to have been tallest hotel in world, demolished 1961.

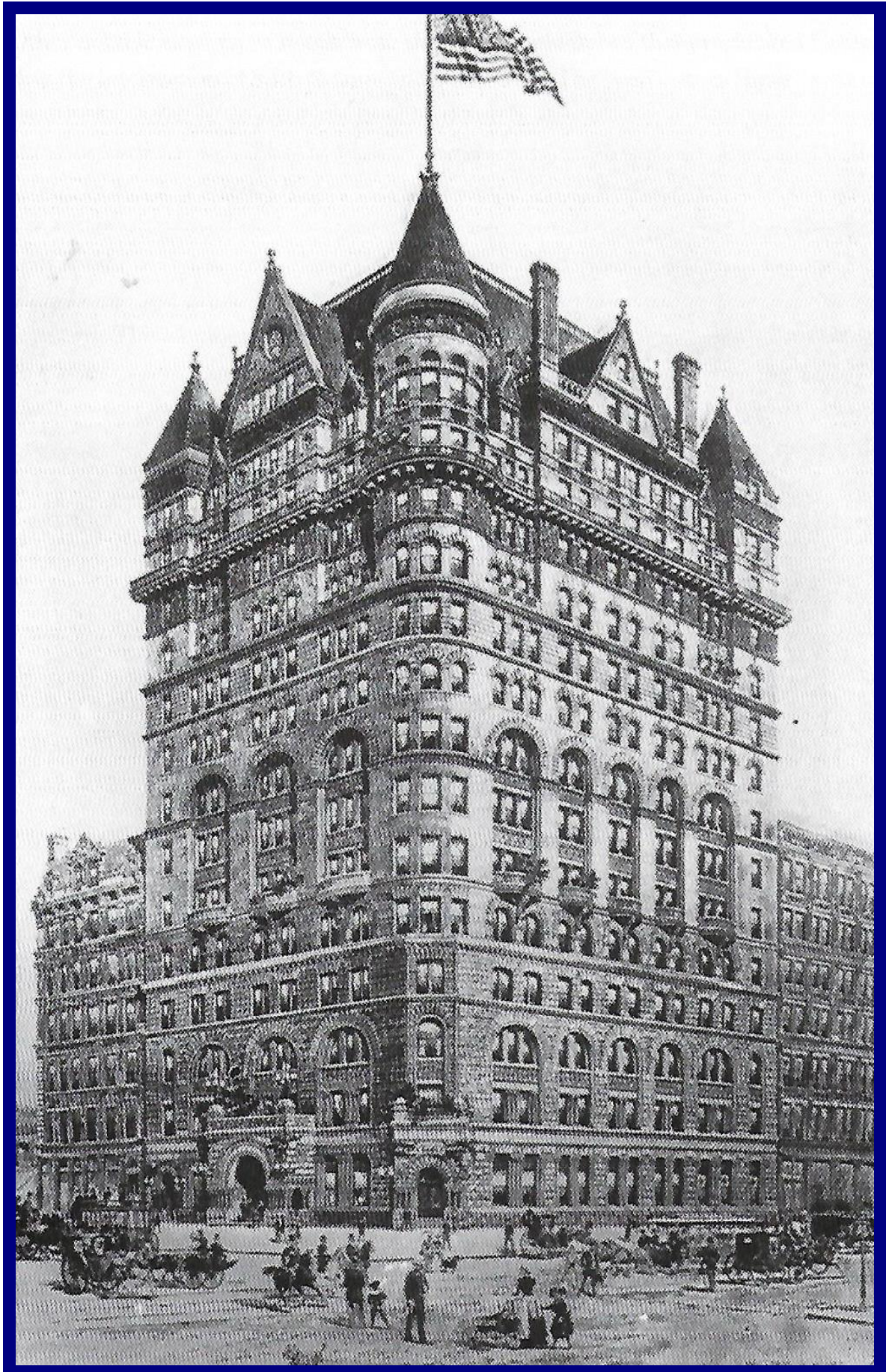
<19>

McALPIN HOTEL, NEW YORK



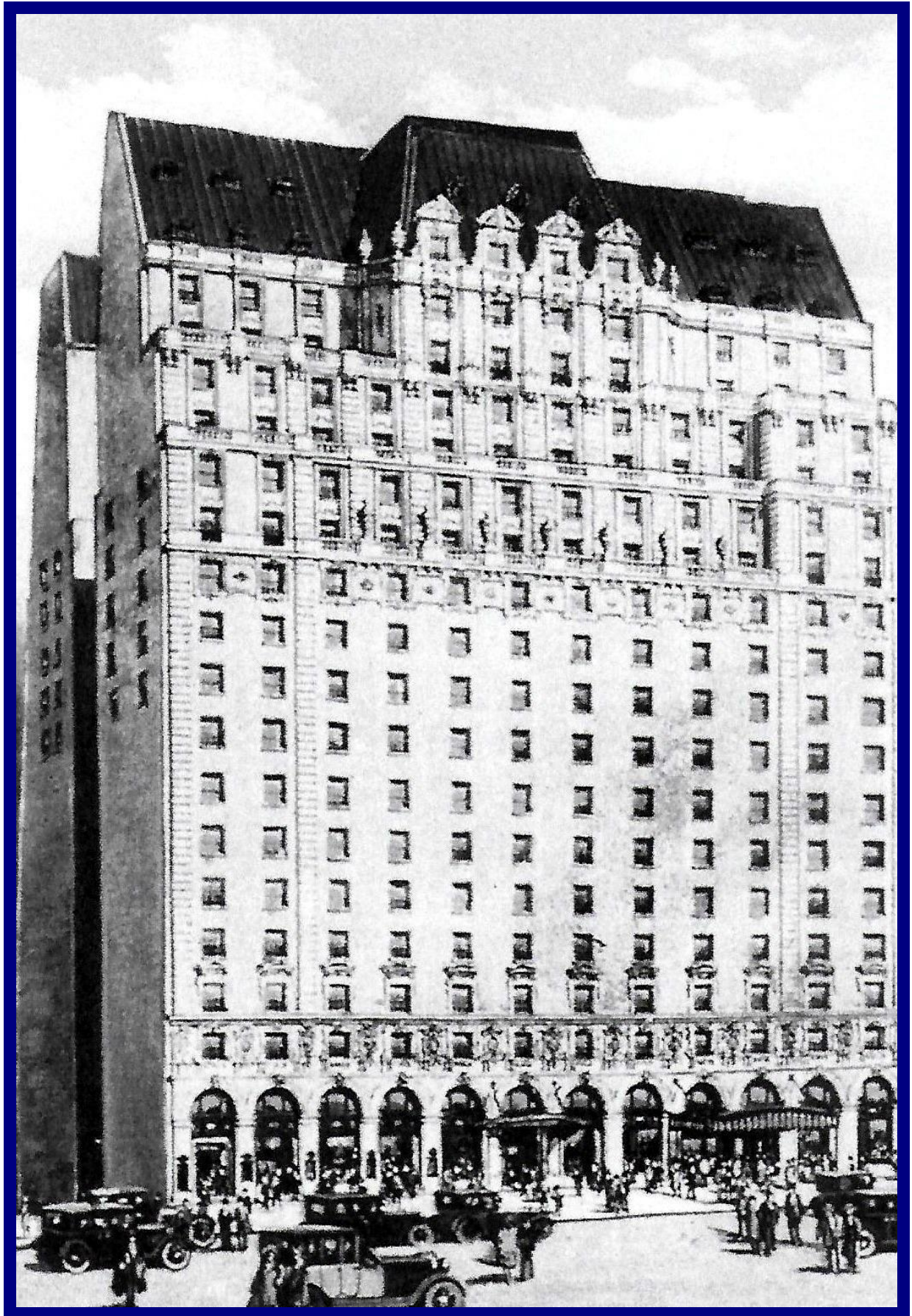
1912: 308 ft, 25 floors, could accommodate 2500 guests.

NEW NETHERLAND HOTEL, NEW YORK



1893: 234 ft, 17 floors, demolished, replaced by Sherry-Netherland Hotel.

PARAMOUNT HOTEL, NEW YORK



1928: 22 floors, 597 rooms.

PENNSYLVANIA HOTEL, NEW YORK



1913: 22 floors, 2200 rooms, all with baths. In late 1930s and early 1940s home to the Big Bands. These included the Dorsey Brothers, Woody Herman and 1940-42 Glenn Miller with his hit number "Pennsylvania 6-5000", the hotel's telephone number.

<23>

PIERRE HOTEL, NEW YORK



1930: 525 ft, 41 floors, 714 rooms.

PLAZA HOTEL, NEW YORK



1907: 21 floors, 282 rooms, 50 baths, telephones and electric clocks in every room.
"Its heating and ventilating system was the largest that had yet been installed".

ST REGIS HOTEL, NEW YORK



1904: 20 floors, 181 rooms & numerous condominiums, then New York's tallest hotel.
Central vacuum cleaning system, electric clocks and heating thermostatic control.

VANDERBILT HOTEL. NEW YORK



1912: 22 floors. " Featured a pneumatic tube delivery system and one of the first hotel air conditioning systems". Converted to apartments in 1967.

WOLCOTT HOTEL, NEW YORK



1904: No further details discovered except that in 2020 it became a "Transitory Home" for the homeless released from prison.

WALDORF, NEW YORK



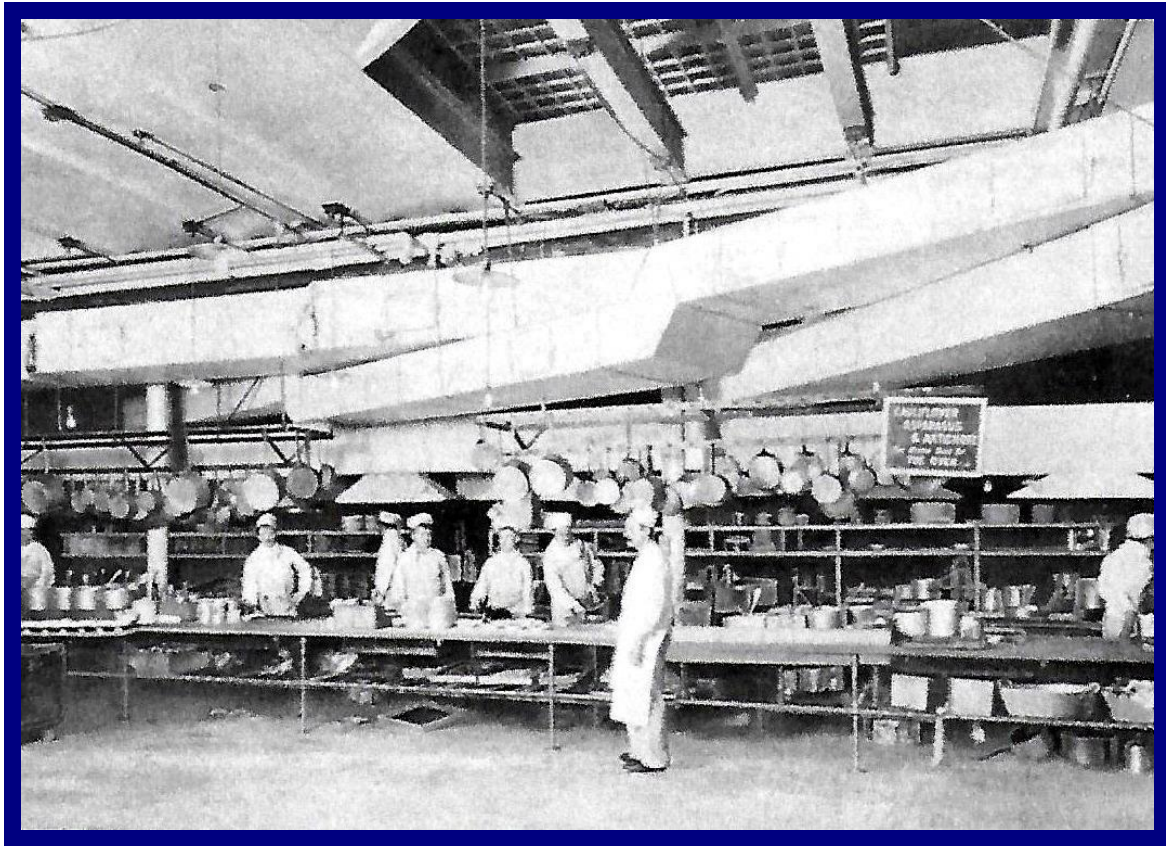
1893: 225 ft, 12 floors, 450 rooms, later connected to the adjacent Astoria Hotel, becoming the first Waldorf-Astoria Hotel, now demolished.

OLD WALDORF-ASTORIA, NEW YORK



1915: 225 ft, 1300 rooms, demolished 1929.
Site used to construct the Empire State Building, 1931.

OLD WALDORF-ASTORIA, NEW YORK



The Kitchen (with ventilation ductwork) occupied the basement below the two main dining rooms (out of five total) along side dish-washing and food storage areas.



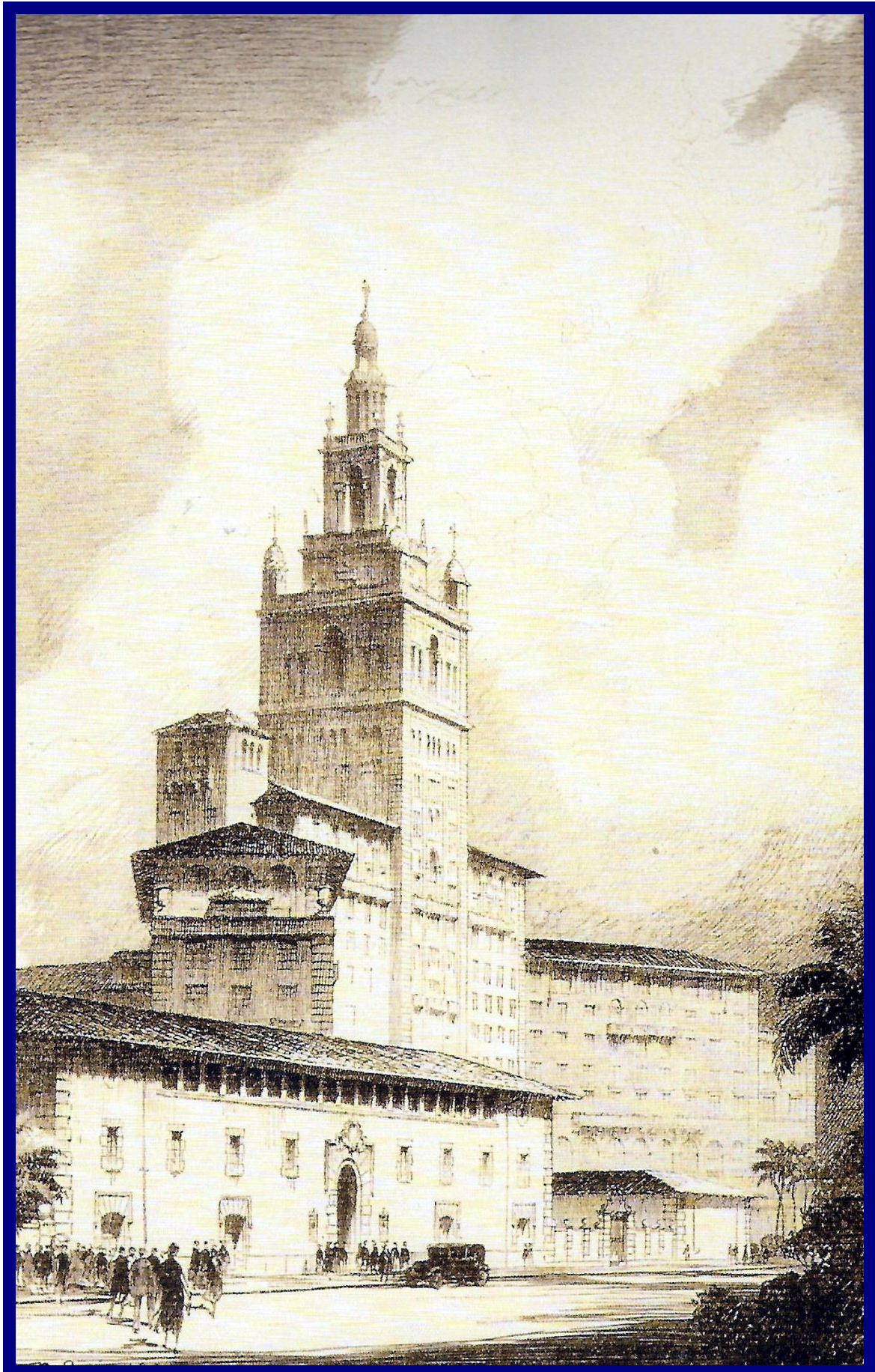
The Laundry, also on the basement level, capable of handling 65,000 pieces of bed and bath linens, tablecloths and napkins. Guest laundry and dry cleaning were located on upper floors. ("On the sub-basement, below the kitchen and laundry, were the hotel's steam-heat systems, hot-water boilers and electric power dynamos".)

NEW WALDORF ASTORIA, NEW YORK



1931: 625 ft, 47 floors, 1413 rooms, originally the tallest hotel in the world.

BILTMORE HOTEL, MIAMI



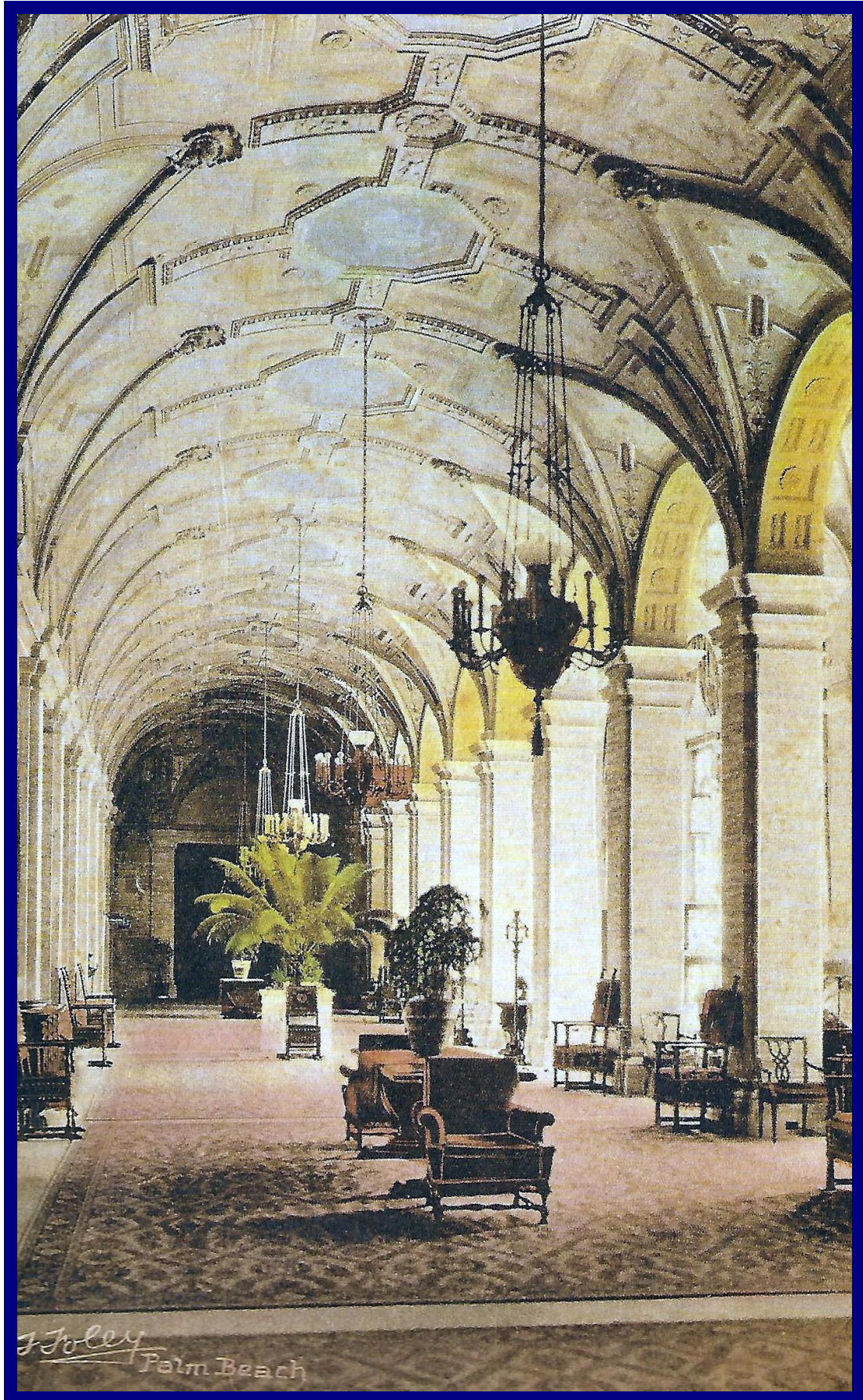
1926: 315 ft, 1413 rooms, then tallest in Miami.

BILTMORE HOTEL, MIAMI



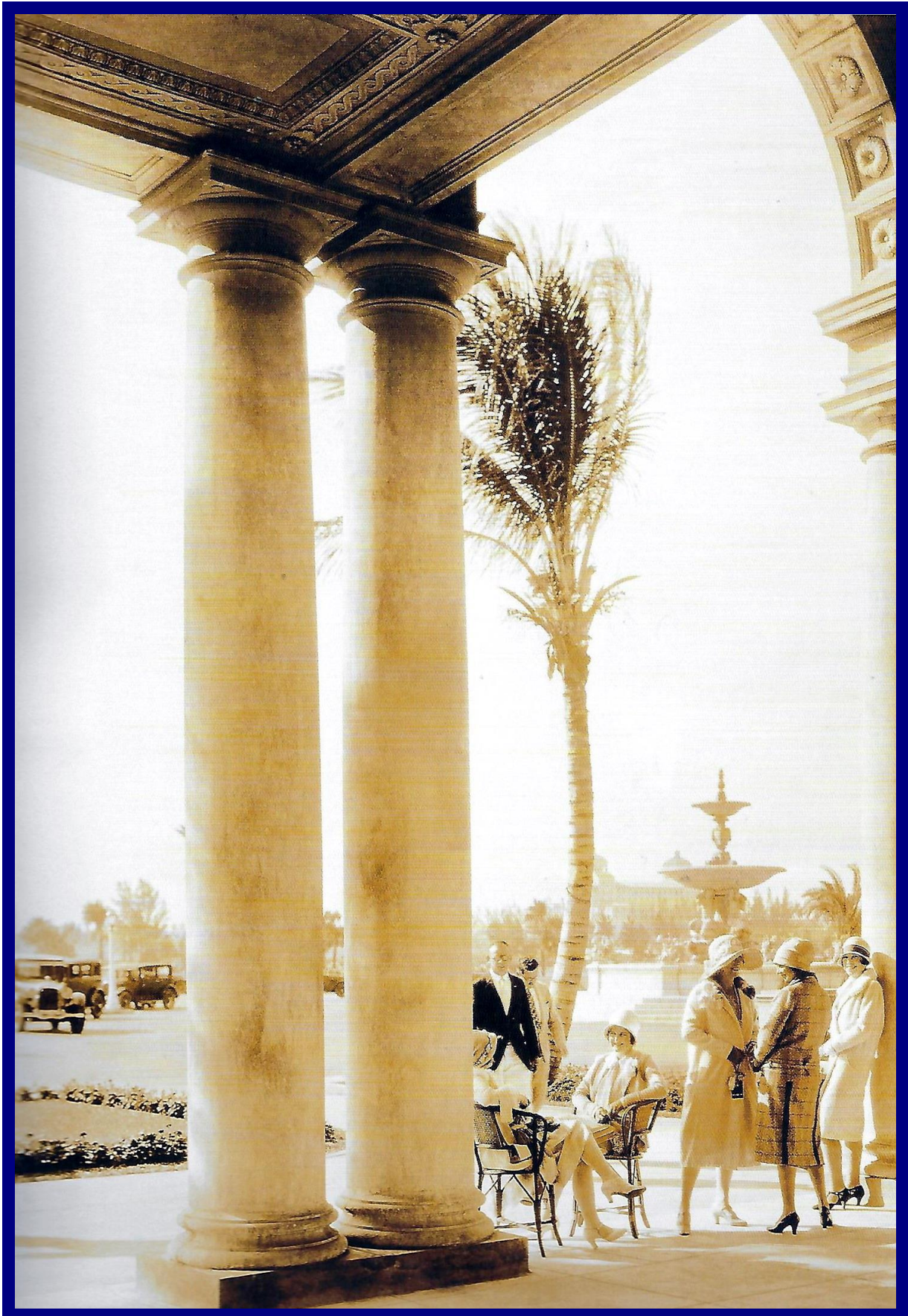
Terrace over the patio, c.1926.

BREAKERS HOTEL, PALM BEACH



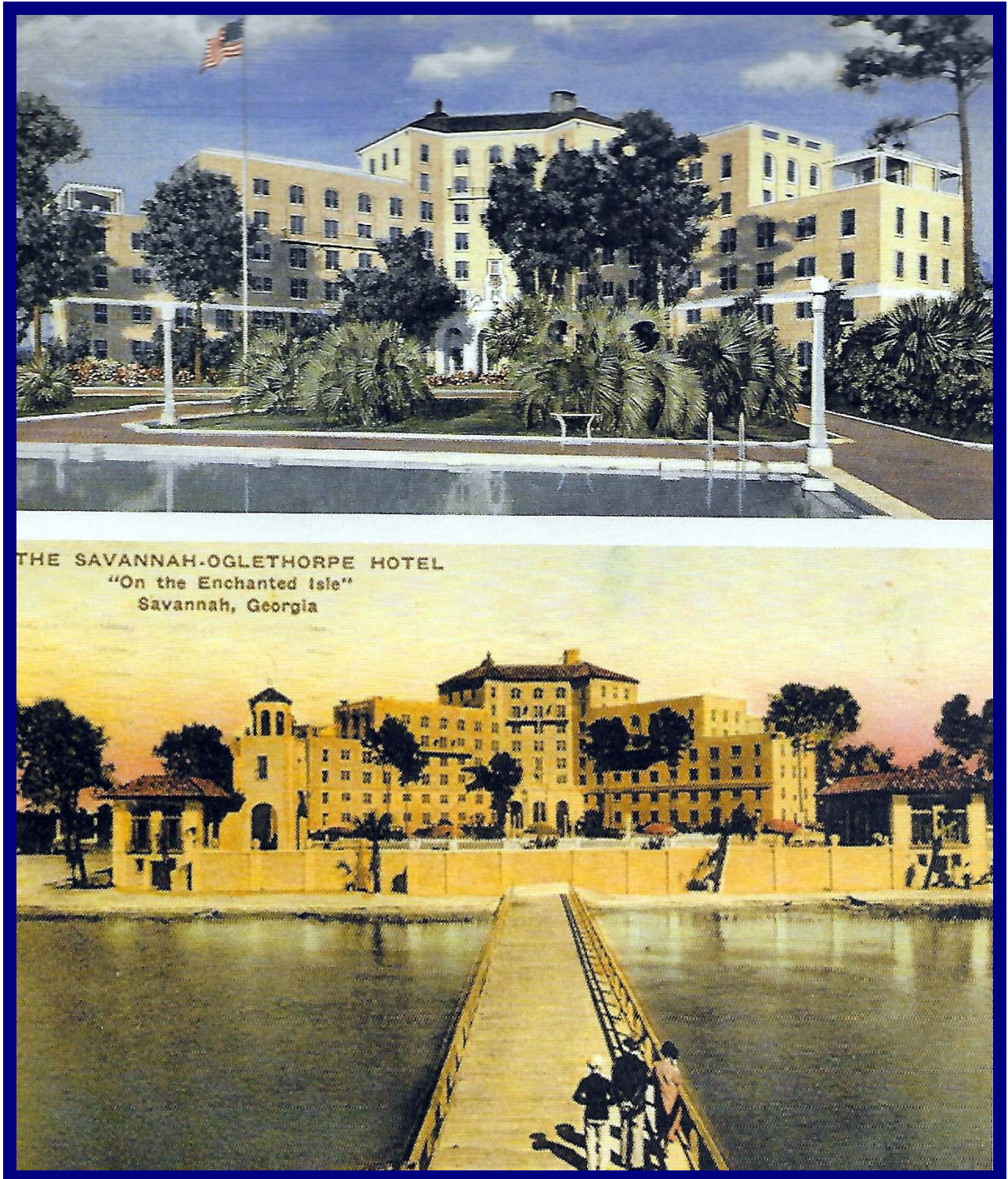
1926: Over 400 bedrooms with baths. View is of the Lobby.

BREAKERS HOTEL, PALM BEACH



Guests at the Hotel Entrance, around 1926.

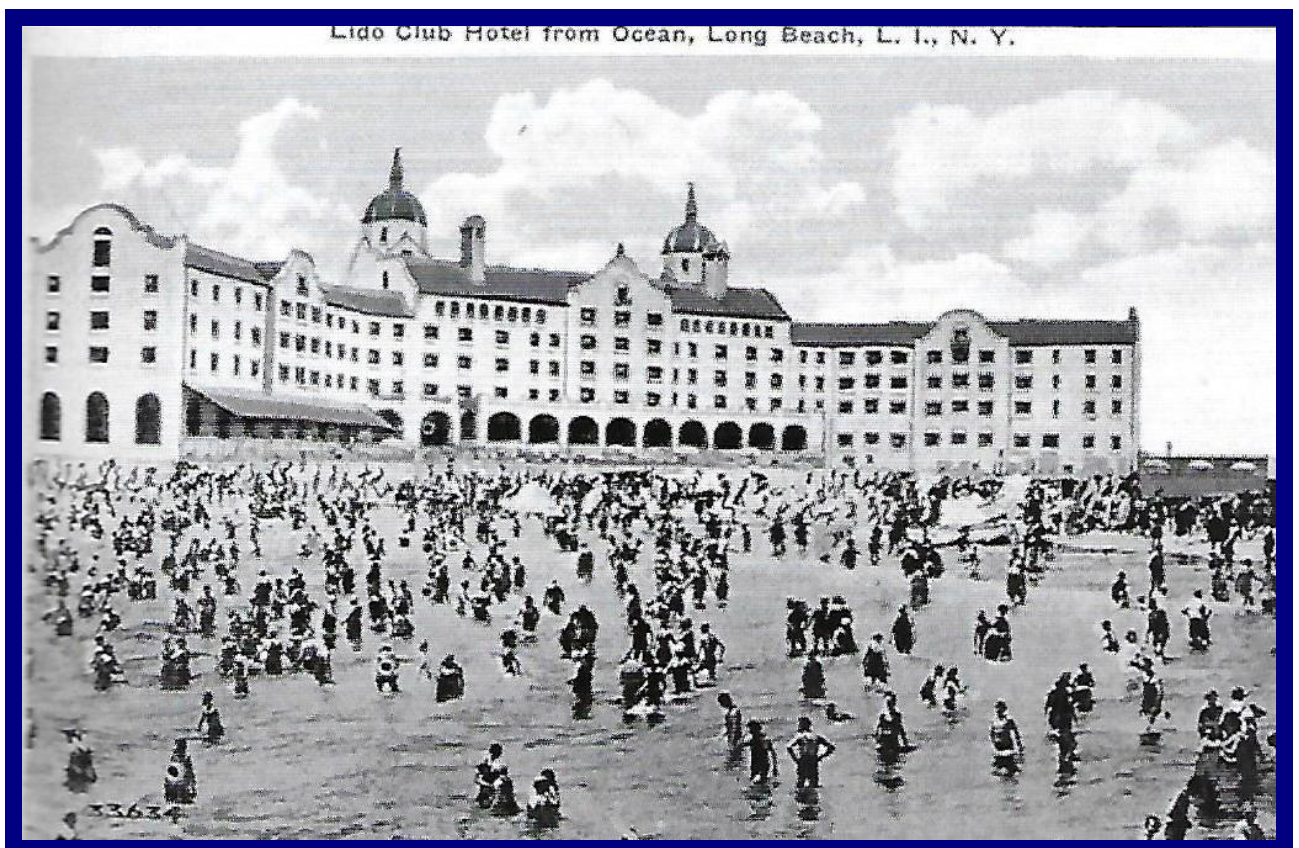
GENERAL OGLETHORPE, SAVANNAH



1927: Postcards of the Hotel: (Top 1940, Bottom c.1929).

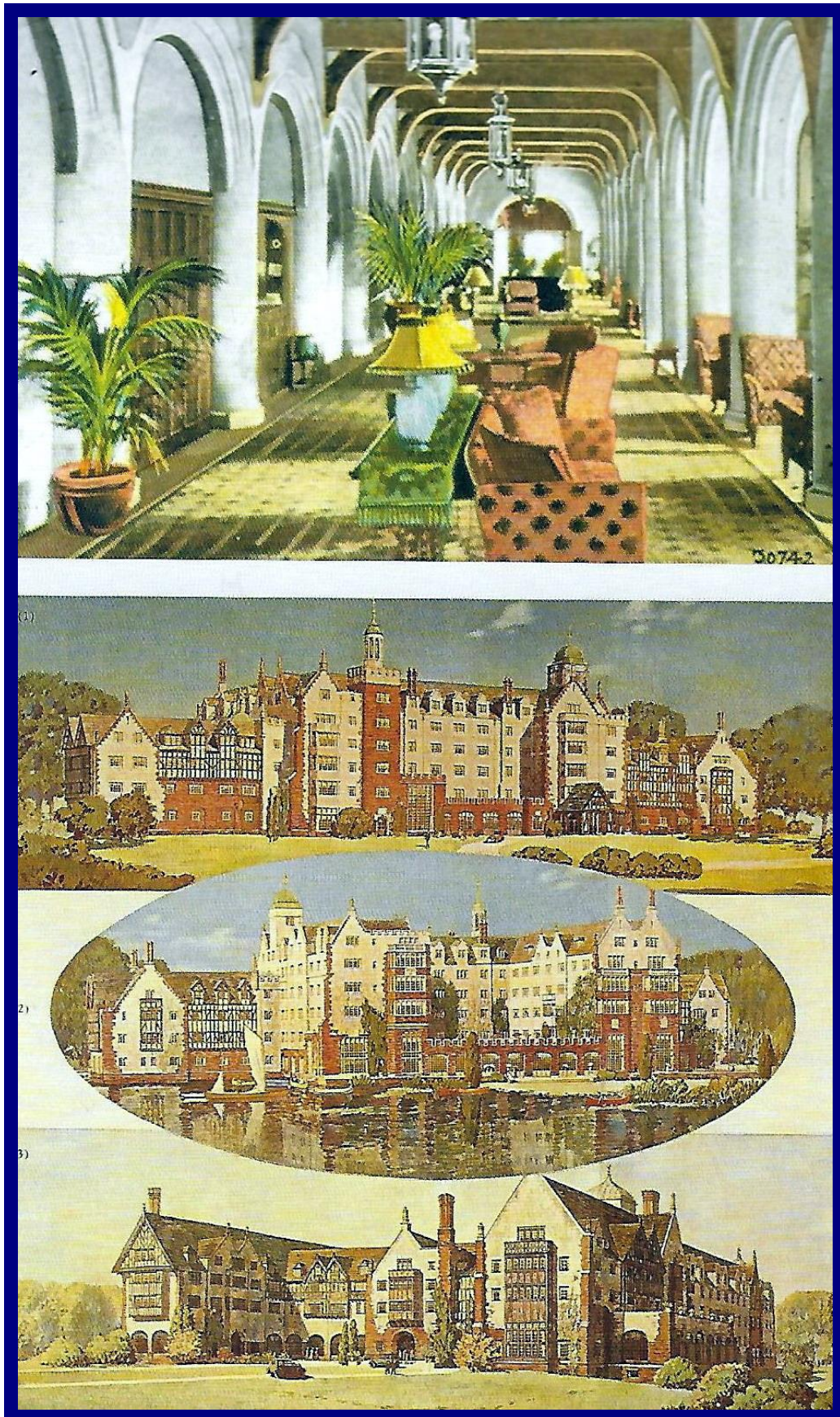
<37>

LIDO CLUB, LONG ISLAND



1928: Built on Long Beach Barrier Island, New York State.
"A private resort designed to admit only well-connected members of high society".

MONTAUK MANOR, LONG ISLAND



1912: Complete with 18-hole golf course, one polo field and a half-mile driving track.

Postcards: (Top "The Miami Beach of the North" c.1926).

(Bottom: Two first pictures of proposed new hotel, never actually built).

MONTAUK MANOR, LONG ISLAND



"Distinguished Summer Colony on the Slender Tip of Long Island", 1929.

NAUTILUS HOTEL, MIAMI



1924: 6 floors, 200 guest rooms, 140 baths. (Top: Postcard, Aerial view 1929).
The Hotel had no swimming pool when opened, added late 1920s.
(Bottom: Fountain in front of the main entrance, c.1924).

NAUTILUS HOTEL, MIAMI

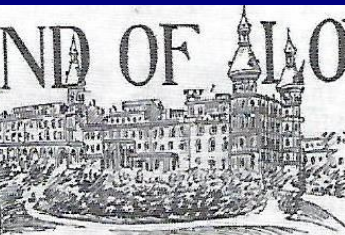


1924 Postcards: (Top: Afternoon Tea Dance), (Bottom: The Lounge).

TAMPA BAY HOTEL, FLORIDA



THE LAND OF LOVELY DREAMS



WHERE THE KNOTTED
NORTHERN NERVES
MAY RELAX AND REST

THE TAMPA BAY HOTEL.
TAMPA, FLA.

WHY should one go to Tampa rather than the resorts on the other coast of Florida? Because the climate of the west coast is far more equable, less enervating, more beneficial to nerves and mind than any other. The climate of Tampa is dry and its tropical warmth is tempered agreeably by westerly breezes from the Gulf of Mexico. While the glorious sunshine in the day time reminds one of the close proximity of the tropical Everglades, night brings with it refreshing coolness and fragrant dews, and with them comes, without fail, "Nature's sweet restorer, balmy sleep."

Apply to agents of The Seaboard Air Line Railway, The Atlantic Coast Railway, Southern Railway, and their connecting lines. *Booklet and Tariff sent on application.*

DAVID LAUBER, Manager, Tampa, Florida

TAMPA BAY HOTEL, FLORIDA



This 1905 view shows the hotel kitchen and staff with renowned chef Jules Bole (second from left). Some of the nation's most celebrated chefs ran the kitchen, overseeing at least two dozen workers, and determined the menus for the hotel, including Joseph P. Campazzi, Theodore Lamanna, and Emile Combe. The *New York Observer and Chronicle* noted that "The [hotel] food is cooked as well as at a private club, and served on choice porcelain with fine linen."



This rare interior view of the hotel bakery shows Oscar E. Skinner, steward (seated), with the bakery and pastry staff in 1905. Like the stewards who served before and after him, he assumed responsibility for the dining room's acclaimed epicurean experience. This photograph illustrates the subtle yet distinct division between the management (seated, wearing a suit) and the working class standing in their uniforms.

REFERENCES AND FURTHER READING



1927 Hotel Roosevelt, Hollywood (First home of the Academy Awards "Oscars").
300 rooms including 63 suites, 12 floors. Built in the "Golden Age of Los Angeles Architecture".
It is the oldest continuously operating hotel in Los Angeles.

1996 Rise of the New York Skyscraper 1865-1913, Sarah Bradford Landau & Carl W. Condit,
Yale University Press, New Haven.

From Images of America Series, Arcadia Publishing, Charleston:

1997 Manhattan Hotels 1880-1920, Jeff Hirsh.

2014 Waldorf Astoria, William Alan Morrison.

2020 Tampa Bay Hotel, Heather Trubee Brown & Susan V. Carter

2020 The Lido Club Hotel, Joanne Belli.

2020 Cascadian Hotel, Helen J. Knowles & L. Darlene Spargo.

2005 Grand Hotels of the Jazz Age: The Architecture of Schultze & Weaver,
Marianne Lamonaca & Jonathan Mogul (Editors), Princeton Architectural Press.

