



Atlantic City, New Jersey: Railway Excursion 1881.

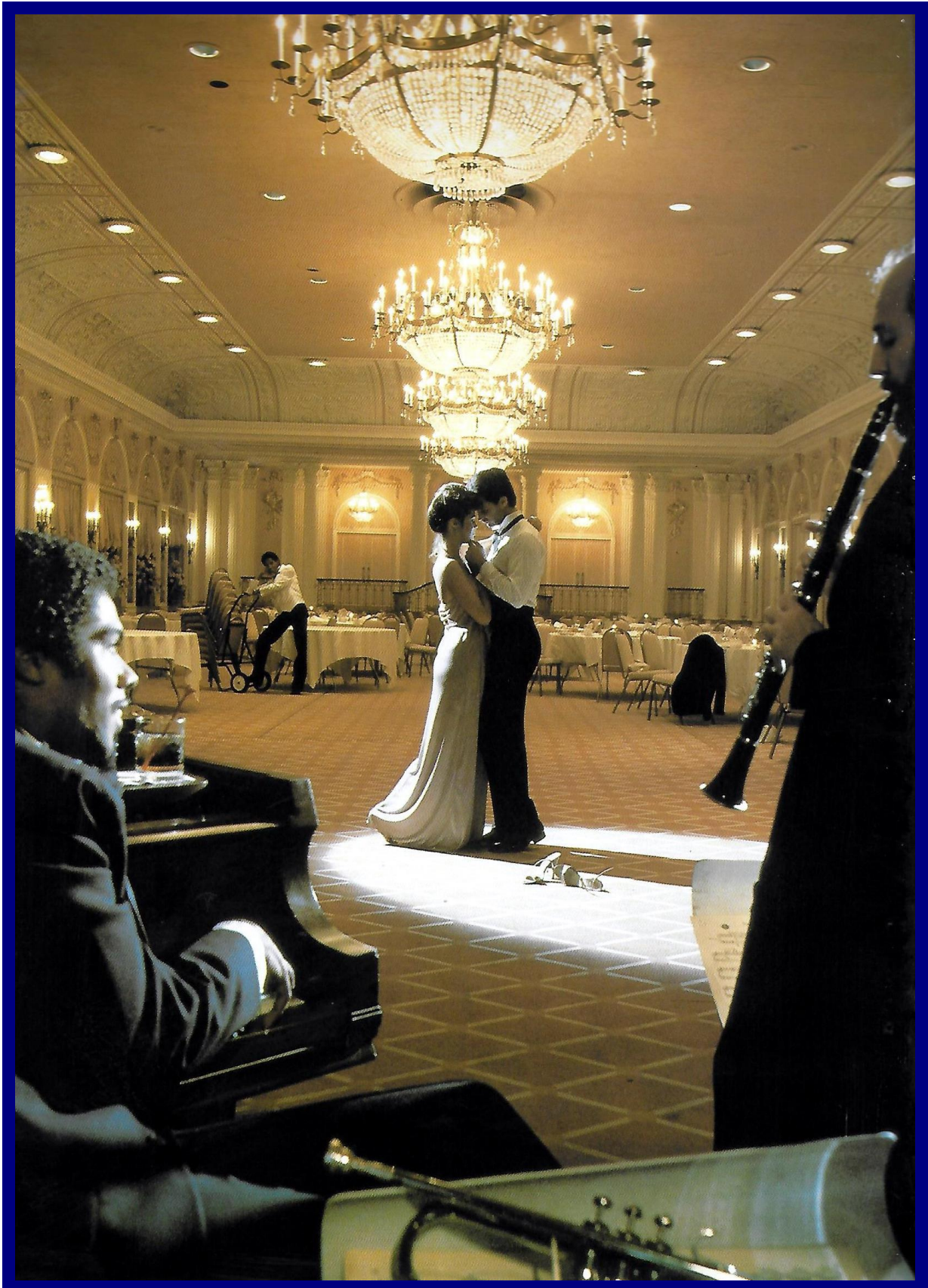
HISTORIC AMERICAN HOTELS

1870-1930

BRIAN ROBERTS

<2>

TENNESSEE: MEMPHIS PEABODY HOTEL

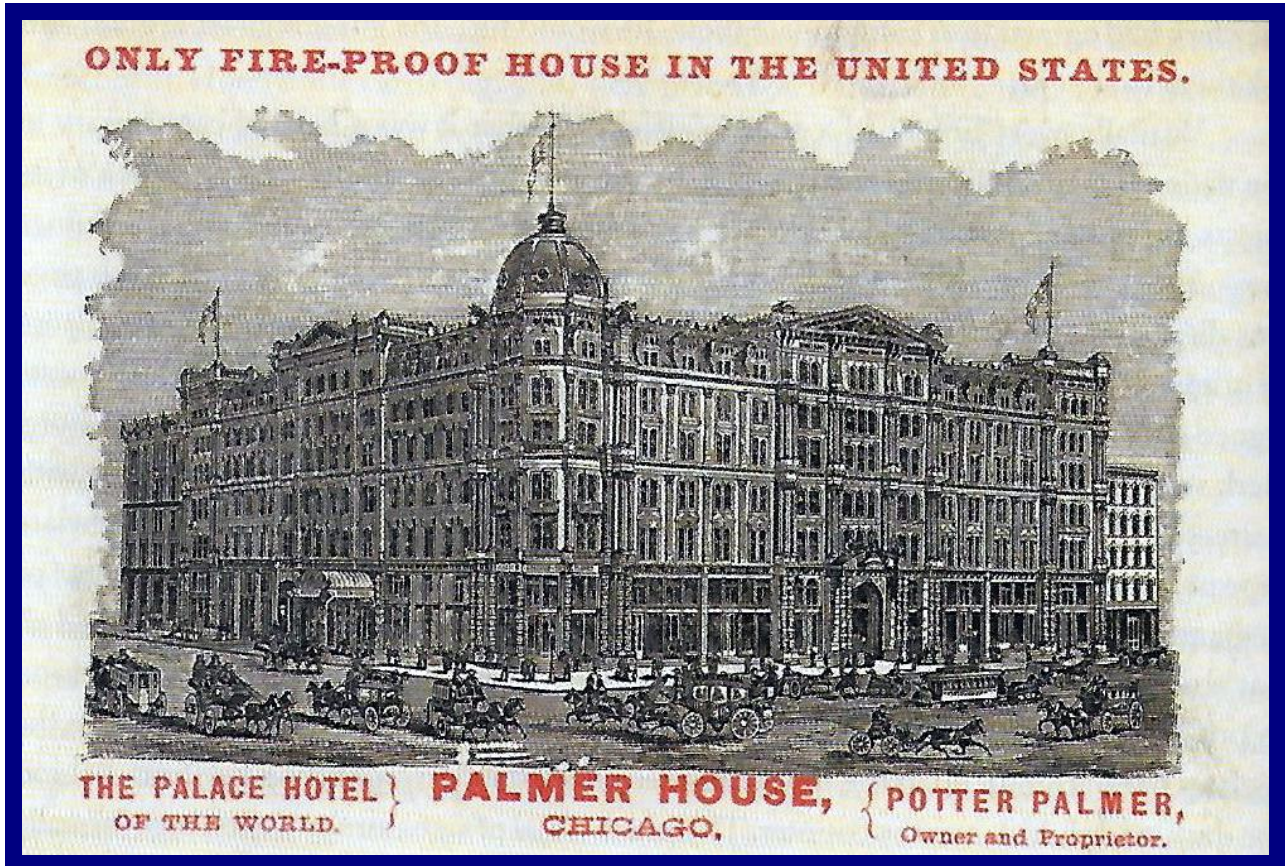


"An evening's end at the Peabody." The hotel was built in 1925 (refer to page 36).

<3>

ILLINOIS: CHICAGO

PALMER HOUSE HOTEL



Built 1925, claimed to be Fireproof (see also page 15).

CONTENTS

HOTEL LOCATIONS BY FEDERAL STATE IN ALPHABETICAL ORDER BY PAGE NUMBERS

California: 4-9, Florida: 10-13, Illinois: 3, 14-19, Louisiana: *inside back cover*- 20,
Maryland: 22-23, Missouri: 21, New Jersey: 1, 24-25,
New York: *front & rear covers*- 26-31, Pennsylvania: *inside front cover*- 32-35,
Tennessee: 2, 36-39, Texas: 40-43,

Introduction: 4

References and Further Reading: 44

CALIFORNIA: SAN FRANCISCO

PALACE HOTEL



2nd Hotel, built 1909, 9 floors, 115 ft, 416 rooms. Architect: Trowbridge & Livingstone.

INTRODUCTION

The Heritage Group has visited many historic buildings: cathedrals, churches, stately homes, museums, hospitals, Parliament, the BBC, Royal Albert Hall, horticultural glass houses; pumping, sewage and gas works, town halls and civic buildings, UK skyscrapers (once limited to 400 ft high), a prison, a castle and even a passenger liner. But it has not been possible to view the engineering services in a large hotel. So, a series of booklets on hotels around the world has been produced. This one looks a sample of historic hotels in the United States between 1870 and 1930. Over this period, the US population increased from 39 to 331 million. In 1870, the major cities (in order) were New York, Chicago, Brooklyn and St. Louis, but are now New York, Los Angeles, Chicago and Houston. The main USA is 40 times the area of the UK and 2900 miles wide. Before air travel the train journey took 4 days and, in the beginning, had neither restaurant nor sleeping coaches. These factors affected the types of American hotels: luxury, commercial, middle-class, resort and "railroad". Many were the skyscrapers of their day having over a 1000 guest rooms. From about 1917, the cost of engineering services was recognised: passenger and service elevators were grouped together requiring only a single bank of machinery. Bathrooms were built back-to-back sharing a common plumbing shaft. Air conditioning came later. But information is not easy to find. Many hotels have been demolished, others rebuilt, enlarged or renamed. Today the USA has some 54,200 hotels with 5 million guest rooms.

<5>

CALIFORNIA: SAN FRANCISCO

HOTEL SIR FRANCIS DRAKE



HOTEL Sir Francis Drake
*San Francisco's Most
Famous Host!*

Built 1928, 22 floors, 320 ft high, 600 rooms. Architect: Weeks & Day.

<6>

CALIFORNIA: SAN FRANCISCO

HOTEL STEWART

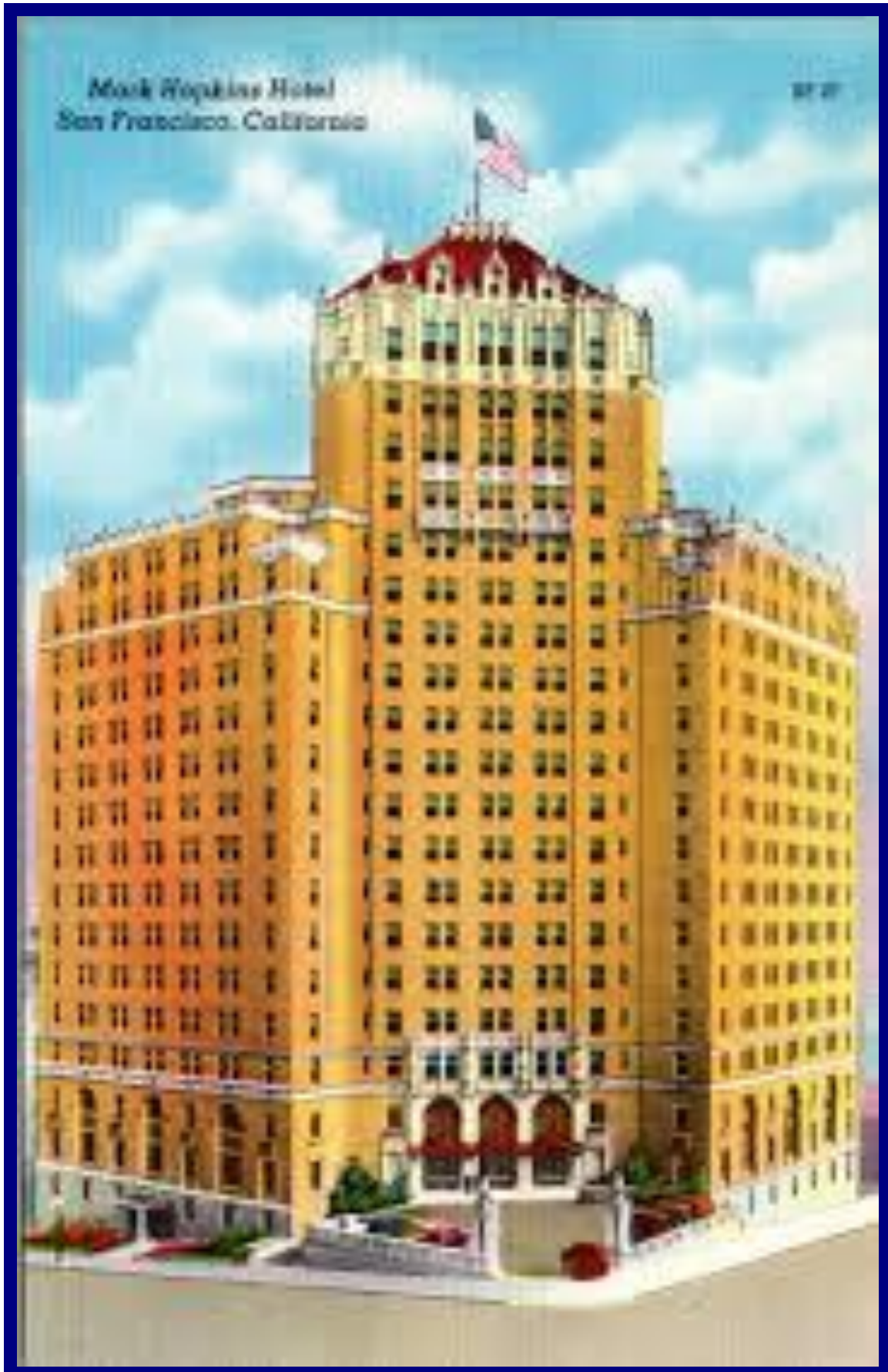


Built 1907, 8 floors. Combined with adjacent Handlery Union Hotel in late 1980s.

<7>

CALIFORNIA: SAN FRANCISCO

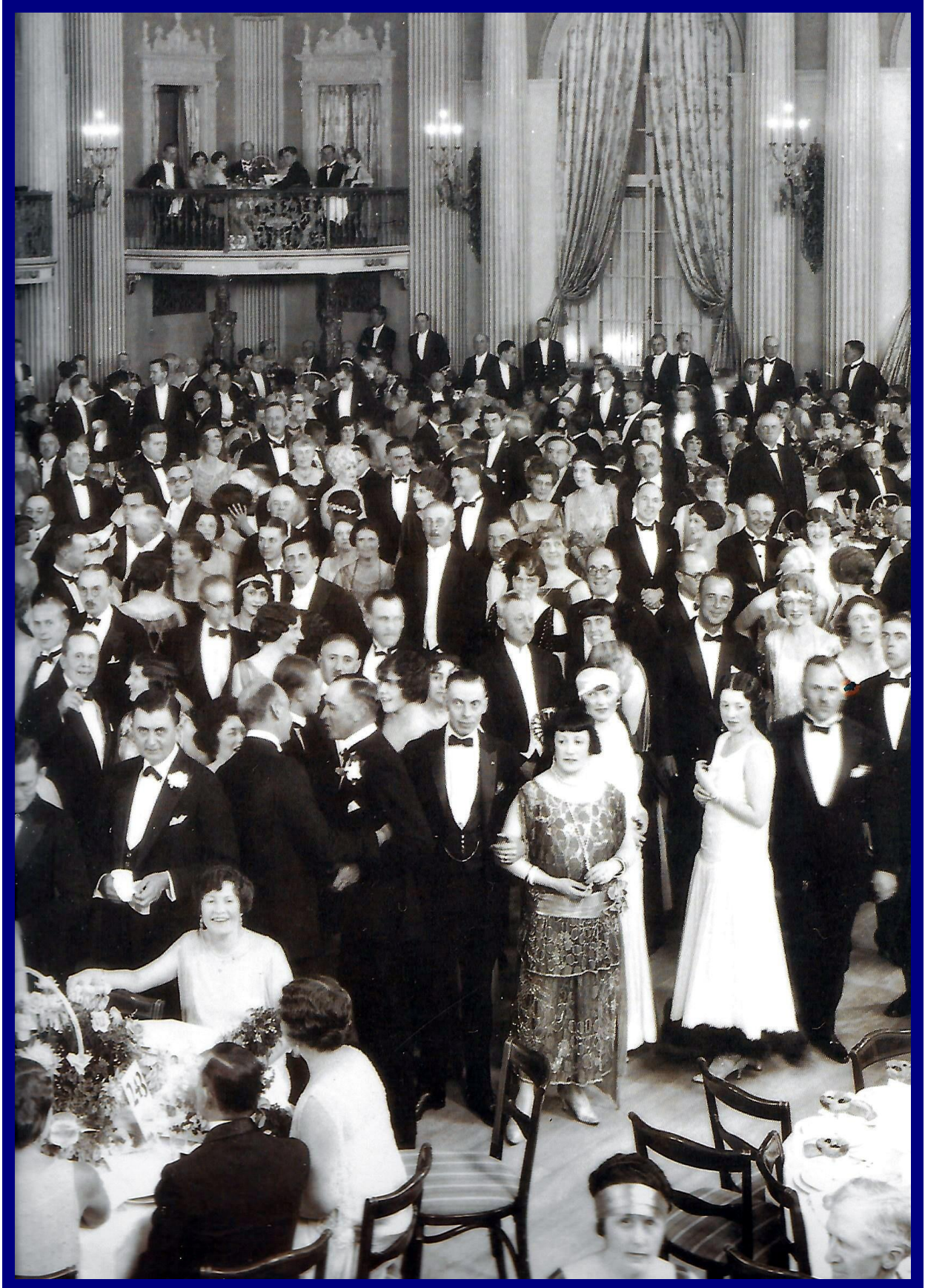
MARK HOPKINS HOTEL



Built 1926, 19 floors, 305 ft, 380 rooms & 39 suites. Architect: Weekes & Day.

<8>

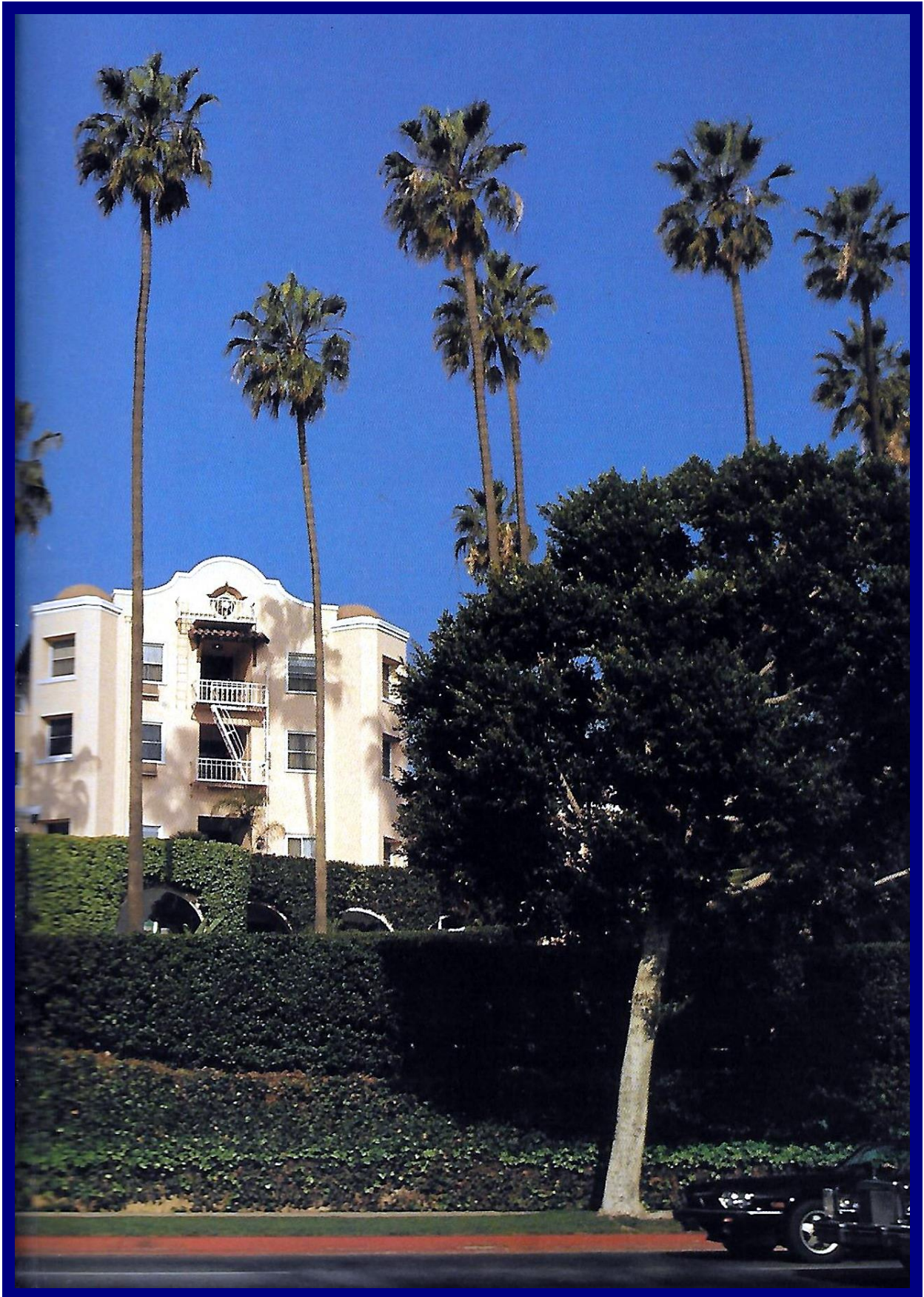
CALIFORNIA: LOS ANGELES BILTMORE HOTEL



Built 1923, 11 floors, 1500 rooms. Architect: Schultze & Weaver.

<9>

CALIFORNIA: LOS ANGELES BEVERLY HILLS HOTEL



Built 1912, 210 rooms & 39 bungalows. Haunt of Hollywood film stars. Architect: Elmer Grey.

FLORIDA: EAST COAST

AT ST. AUGUSTINE, ORMOND, PALM BEACH, MIAMI, LONG KEY, KEY WEST

HARPER'S BAZAR HOTEL and TRAVEL DEPARTMENT

THE MAGIC OF THE GULF STREAM

ST. AUGUSTINE
PONCE DE LEON
ALCAZAR

ORMOND
HOTEL ORMOND

ROYAL POINCIANA
PALM BEACH
THE NEW BREAKERS

MIAMI
ROYAL PALM HOTEL

LONG KEY
LONG KEY FISHING CAMP

KEY WEST
CASA MARINA

EAST COAST OF FLORIDA

SO long as the Gulf Stream flows up the East Coast of Florida — so long as the sun shines — the East Coast of Florida will be the most natural place to spend the winter. Thank Nature for the summer magic of that tropical current. Thank man for the vision to see and the courage to make of that East Coast of Florida a land of supreme attraction, a land for rest or play, for a nation of people to the North in the winter time.

The Magic of the Gulf Stream is Winter's call to Play or to Rest on the East Coast of Florida. For rest and play the great resorts of the East Coast were made. Art and a tropical setting color the days. Fashion dresses them. And people, eager, alert, companionable, give them spirit. Select your own part. Every material facility is present for sport, in the water or on the land. And from Nature, herself, Rest — the fountain of youth or the fountain of health — under the magic spell of the Gulf Stream.

Of the many delightful Winter Resort Hotels on the East Coast of Florida, the rendezvous of Society at play have long been:—
At ST. AUGUSTINE
Alcazar — Ponce de Leon
At ORMOND
Ormond-on-the-Halfway
At PALM BEACH
Royal Poinciana — Breakers
At MIAMI
The Royal Palm
At LONG KEY
Long Key Fishing Camp
At KEY WEST
Casa Marina
Openings — Dec. 15th to Jan. 15th
All owned and operated on the American Plan by the
FLORIDA EAST COAST HOTEL COMPANY

Only 26 to 36 hours from North Eastern or Central States. The Florida East Coast Railway, now completely double tracked to Miami, gives the East Coast resorts the only continuous double track system from Eastern cities. Newest and best equipment, automatic block signals, etc., insure absolute safety and schedule time. All locomotives oil burning. Numerous de luxe trains, daily, scheduled for the winter months.
For illustrated booklets of hotels, time tables, etc., address
Florida East Coast Railway Co.
Florida East Coast Hotel Co.
(Flagler System)
2 West 45th Street, NEW YORK
or General Offices, St. Augustine, FLORIDA

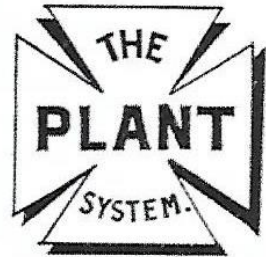
Hotels featured: Ponce De Leone, Alcazar, Ormond, Royal Poinciana & Royal Palm.

FLORIDA: WEST COAST

AT TAMPA, BELLAIRE, WINTER PARK, KISSIMEE, OCALA, PUNTA GORDA

ATTRACTIONS

OF



ON THE WEST COAST OF FLORIDA

PLANT SYSTEM HOTELS:

TAMPA BAY HOTEL, TAMPA, FLA.

HOTEL BELLEVIEW, BELLAIRE, FLA.

THE SEMINOLE

WINTER PARK, FLA.

THE KISSIMEE

KISSIMEE, FLA.

THE INN

PORT TAMPA, FLA.

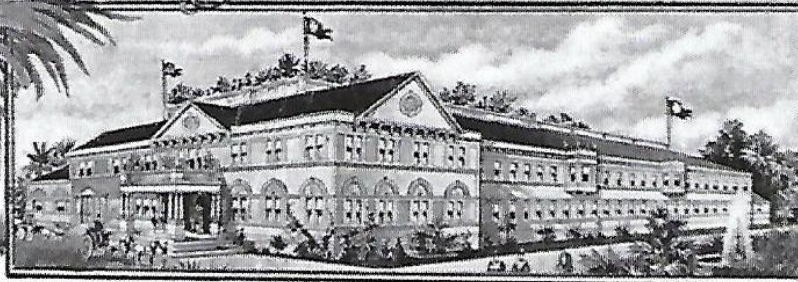
THE OCALA HOUSE

OCALA, FLA.

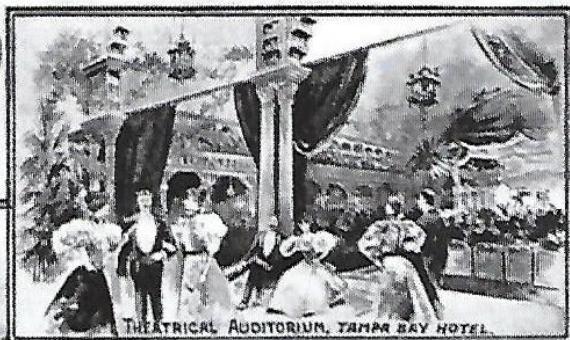
THE PUNTA GORDA

PUNTA GORDA, FLA.

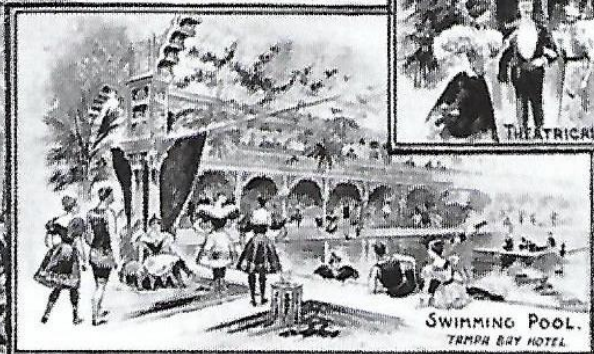
D.P. HATHAWAY, MANAGER.



THE CASINO, AT TAMPA BAY HOTEL.



THEATRICAL AUDITORIUM, TAMPA BAY HOTEL.



SWIMMING POOL, TAMPA BAY HOTEL.

THE WEST COAST OF FLORIDA THE HEALTH & PLEASURE SEEKERS PARADISE.

Through Trains from all Points, via-

PLANT SYSTEM.

Beautifully illustrated descriptive literature, sent upon application.

H.B. PLANT, PRESIDENT.

B.W. WRENN, PASS. TRAFFIC M'G'R.

J.J. FARNSWORTH, EASTERN PASS. AGENT.

<12>

FLORIDA: PALM BEACH ROYAL POINCIANA HOTEL



Built 1894, 450 bedrooms, 100 bathrooms (later 1031 bedrooms).
Once the largest wooden structure in USA. Closed and demolished 1934.

<13>

FLORIDA: ST. AUGUSTINE PONCE DE LEON HOTEL



Built 1187, 540 rooms. Architect: Carrere & Hastings. Closed 1967.

<14>

ILLINOIS: CHICAGO MORRISON HOTEL



Built 1925. 45 floors, 526 ft, 2210 rooms. For 30 years tallest hotel in world. Demolished 1965.

<15>

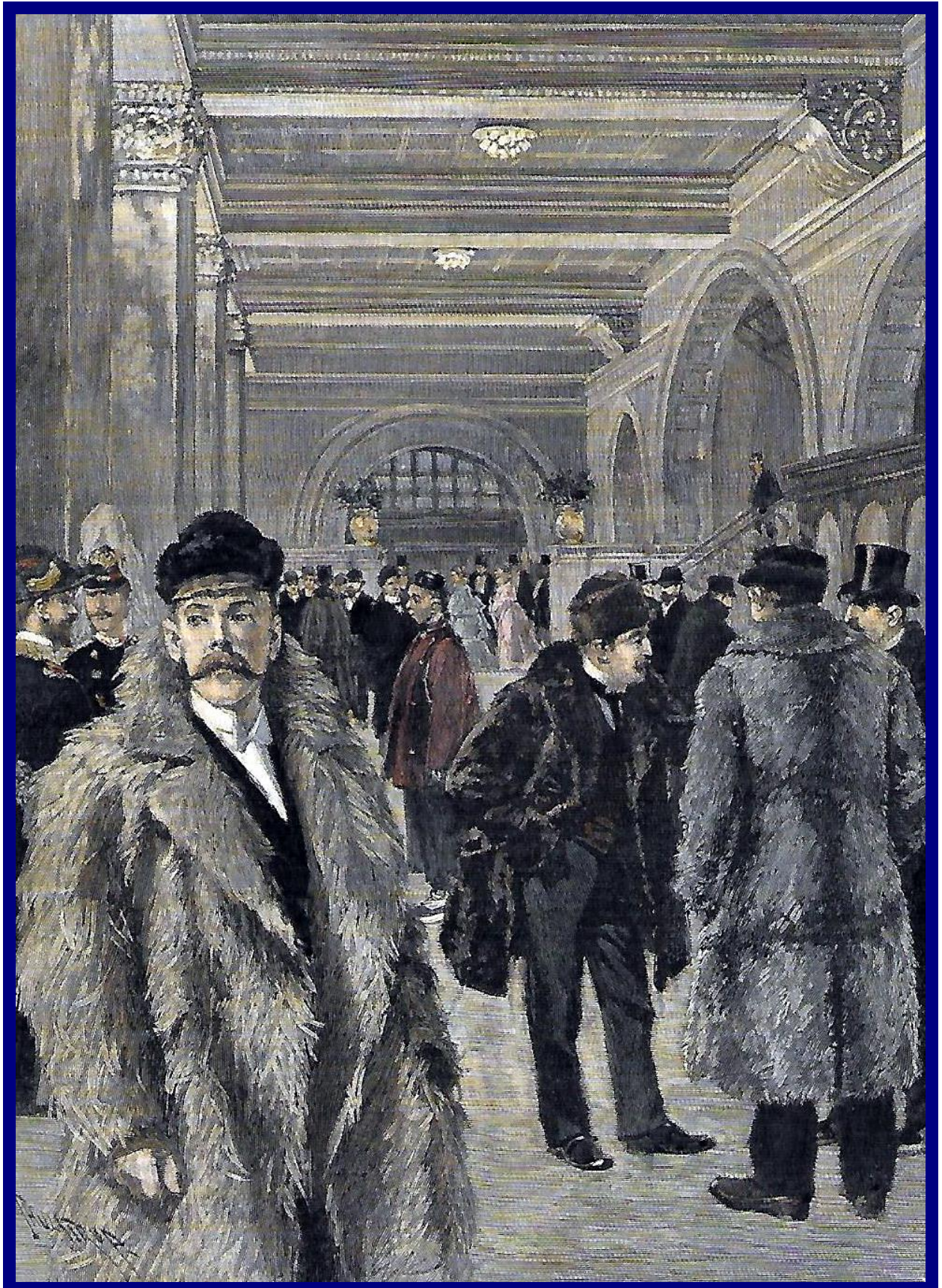
ILLINOIS: CHICAGO PALMER HOUSE HOTEL



Built 1925, now 1693 rooms. Architect: J.M. Van Osdel.

<16>

ILLINOIS: CHICAGO BROADWAY CENTRAL HOTEL



Hotel Lobby in the 1890s, often used as a temporary refuge from noise, dirt and the weather.
Built 1870, 8 floors, 630 rooms. Architect: Henry Engelbert. Hotel collapsed in 1973.

<17>

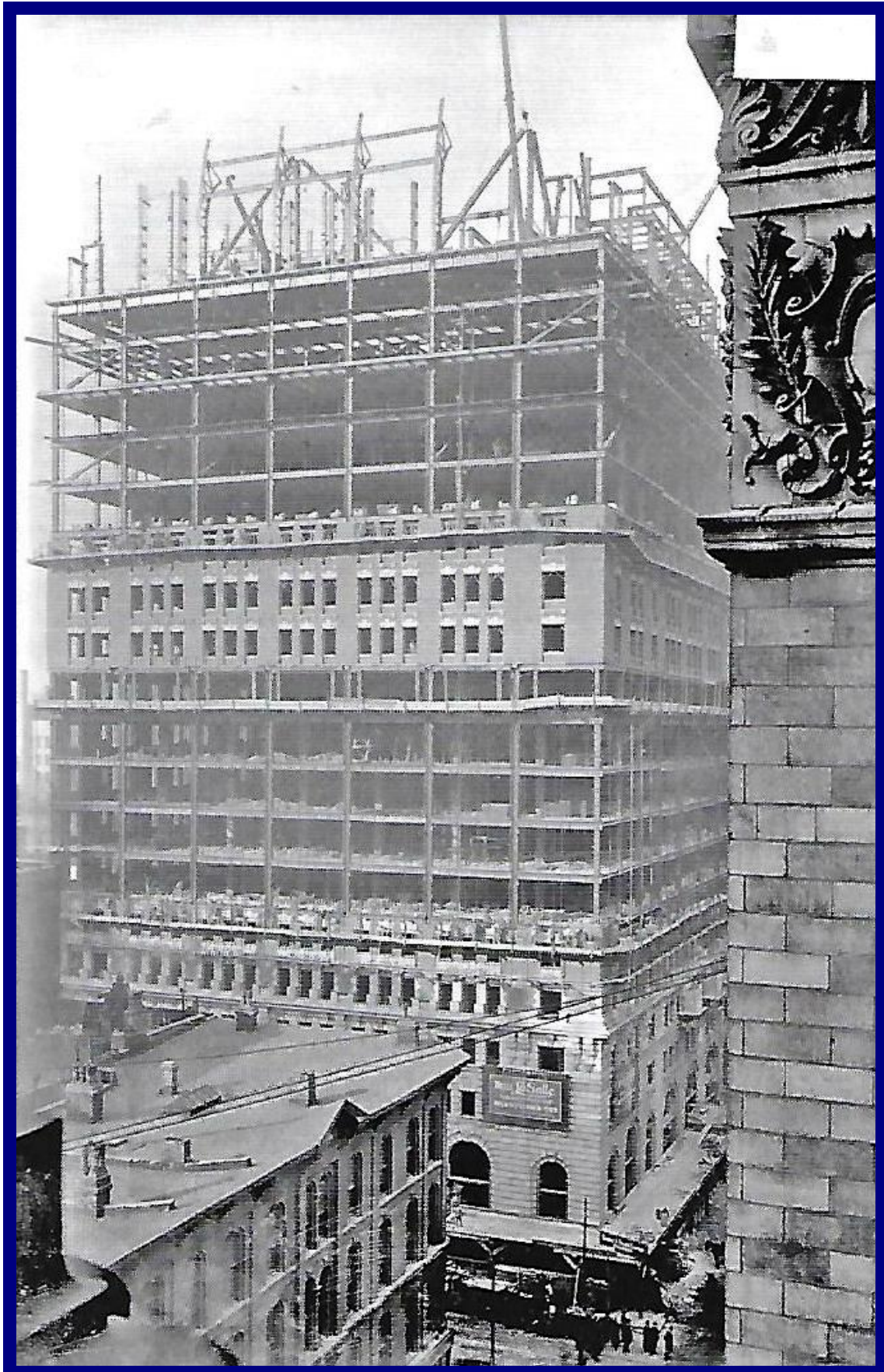
ILLINOIS: CHICAGO
PALMER HOUSE HOTEL



Around 1880, the original Palmer House had one floor entirely reserved for women guests.

<18>

ILLINOIS: CHICAGO HOTEL LASALLE

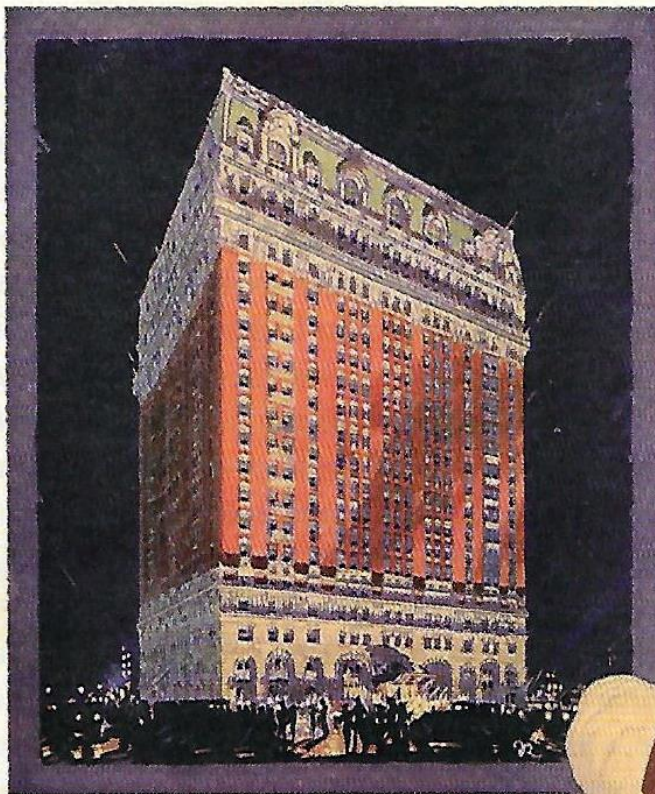


The Hotel LaSalle under construction c.1908.

<19>

ILLINOIS: CHICAGO HOTEL LASALLE

Hotel LaSalle CHICAGO'S FINEST HOTEL



Room Rates

Number of Rooms	Price per Day	
	1 Person	2 Persons
171	\$2.50	\$4.00
61	3.00	4.50
33	4.00	5.50
141	4.00	6.00
78	4.50	6.50
250	5.00	7.00
115	6.00	8.00
177	7.00	9.00

1026 guest rooms

Fixed-Price Meals
Breakfast - 50c and 70c
Luncheon - - 85c
Dinner - - \$1.25
A la carte service at
sensible prices

HOSPITALITY

WITH wordless gesture the friendly Red Man welcomed the stranger to his camp. ☪ In Chicago today the Indian is only a memory but at HOTEL LA SALLE you will find that spirit of helpful service and genuine welcome which has ever been the essence of real hospitality. ☪ No other hotel is better equipped to minister to the personal needs, comfort, and contentment of the traveler.

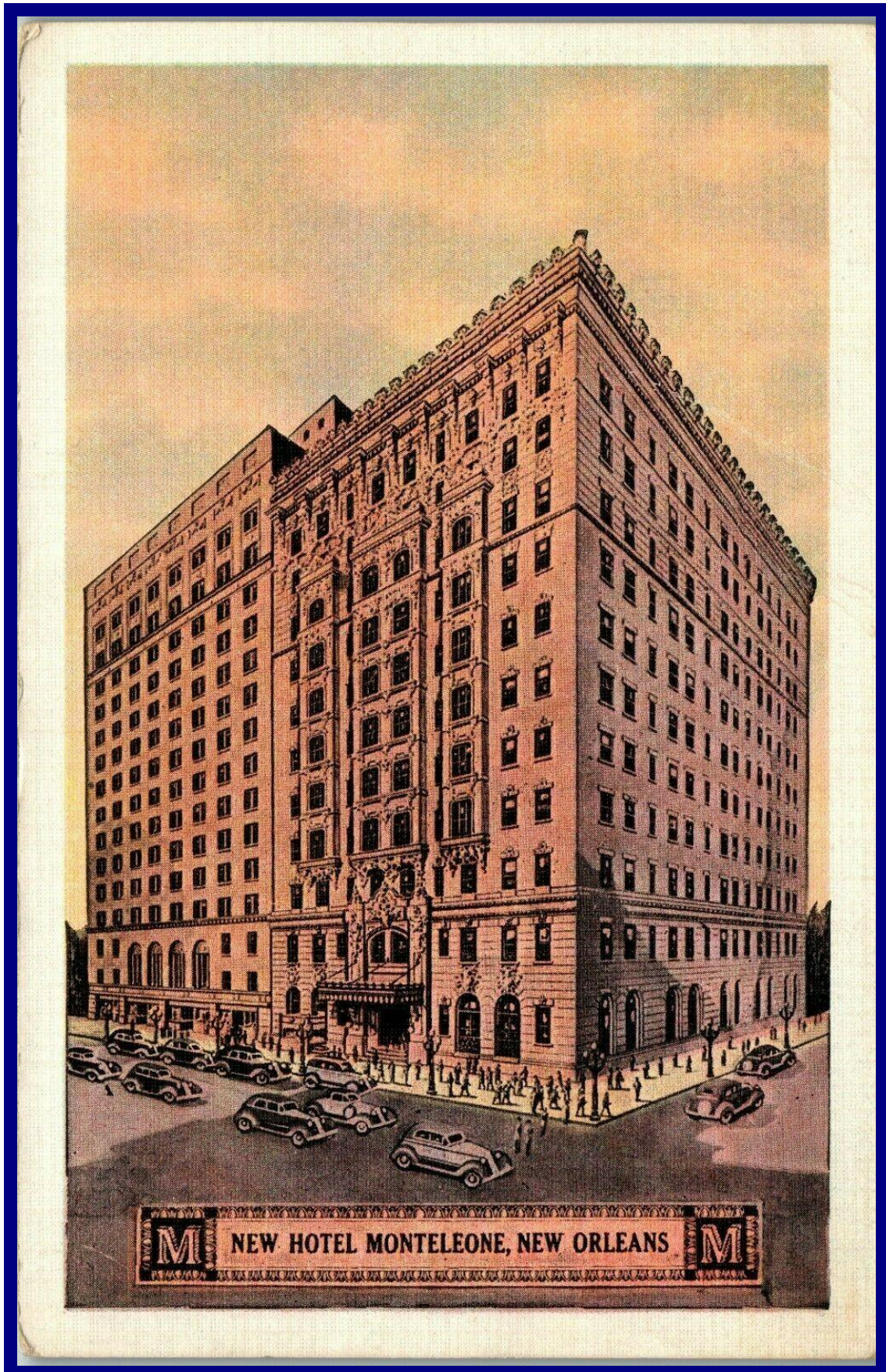


HOTEL LA SALLE
La Salle at Madison Street
ERNEST J. STEVENS
Vice-President - Manager



<20>

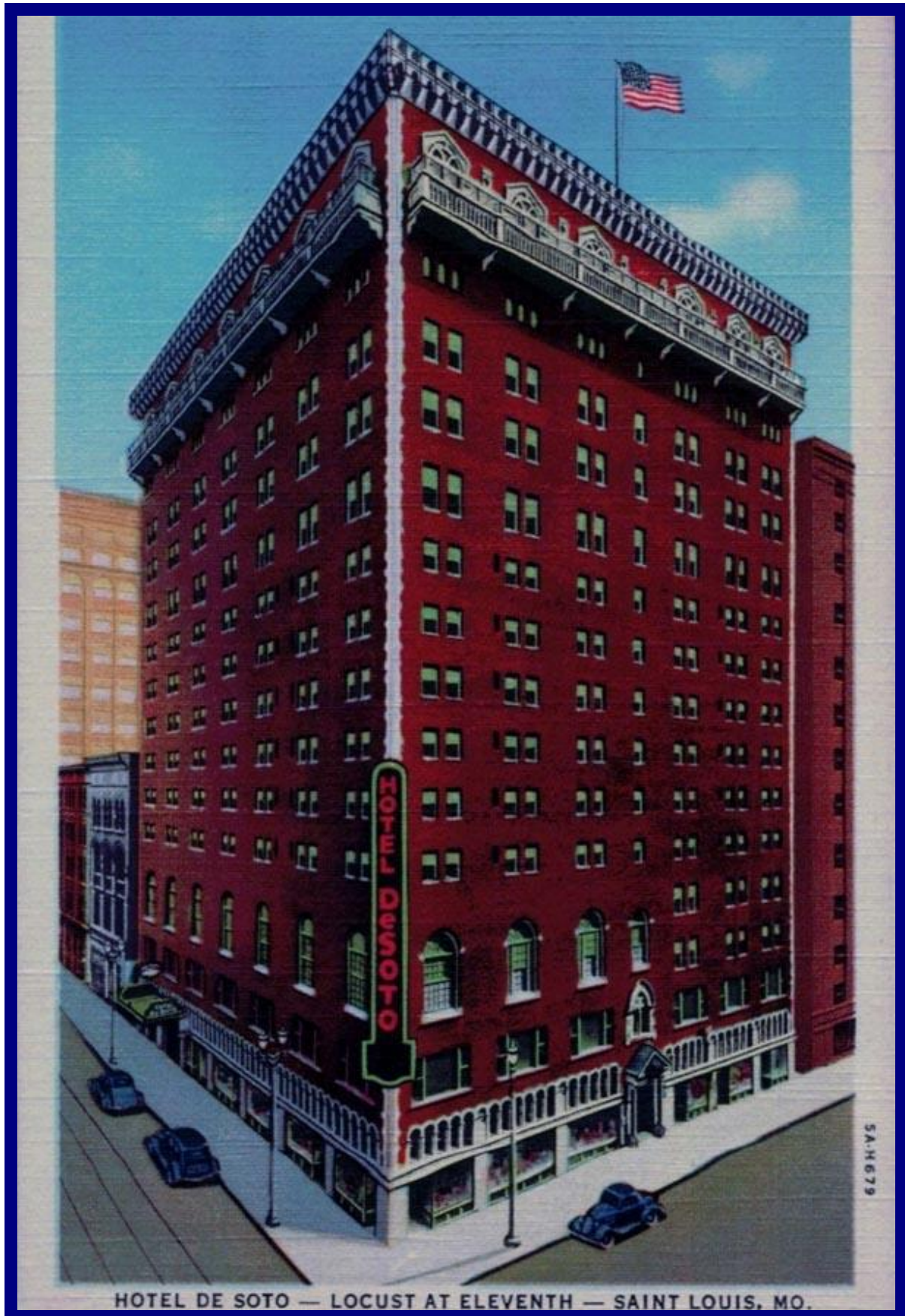
LOUISIANA: NEW ORLEANS HOTEL MONTELEONE



Built 1886, 520 bedrooms, 50 suites. Demolished 1954 and replaced.

<21>

MISSOURI: ST. LOUIS HOTEL DE SOTO



Conflicting history. Possibly built 1914, about 15 floors, 300 rooms, now the Hotel Majestic.

<22>

MARYLAND: BALTIMORE LORD BALTIMORE HOTEL



Built 1928, 23 floors, 289 ft, 440 rooms. Architect: W.L. Stoddart.

<23>

MARYLAND: BALTIMORE NEW EMERSON HOTEL



Built 1911, about 15 hotel floors. Demolished 1971.

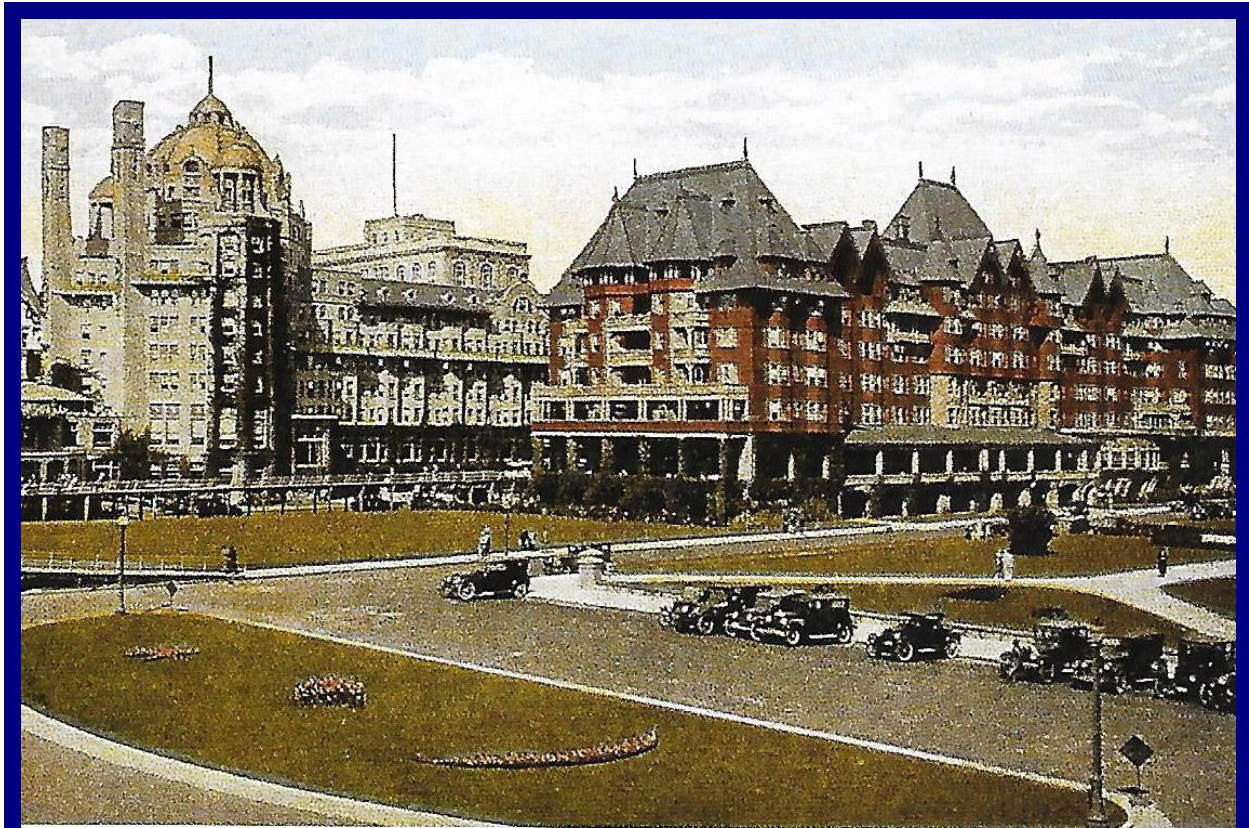
<24>

NEW JERSEY: ATLANTIC CITY HOTEL CLARIDGE



Built 1930, 24 floors, 400 rooms plus suites.

NEW JERSEY: ATLANTIC CITY MARLBOROUGH BLENHEIM & TRAYMORE HOTELS



Marlborough B (top left): Built 1906, Early reinforced concrete construction. Demolished 1978.
Traymore (bottom): Built 1930, 24 floors, 225 ft, 450 rooms. Demolished 1972.

<26>

NEW YORK: NEW YORK CITY BILTMORE HOTEL



Built 1913, 26 floors, 1000 rooms. Gutted by developers. Now 333 Madison Avenue.

<27>

NEW YORK: NEW YORK CITY HOTEL MANGER



Built 1926, 22 floors, 2250 rooms. Became the well known Taft Hotel in 1931.

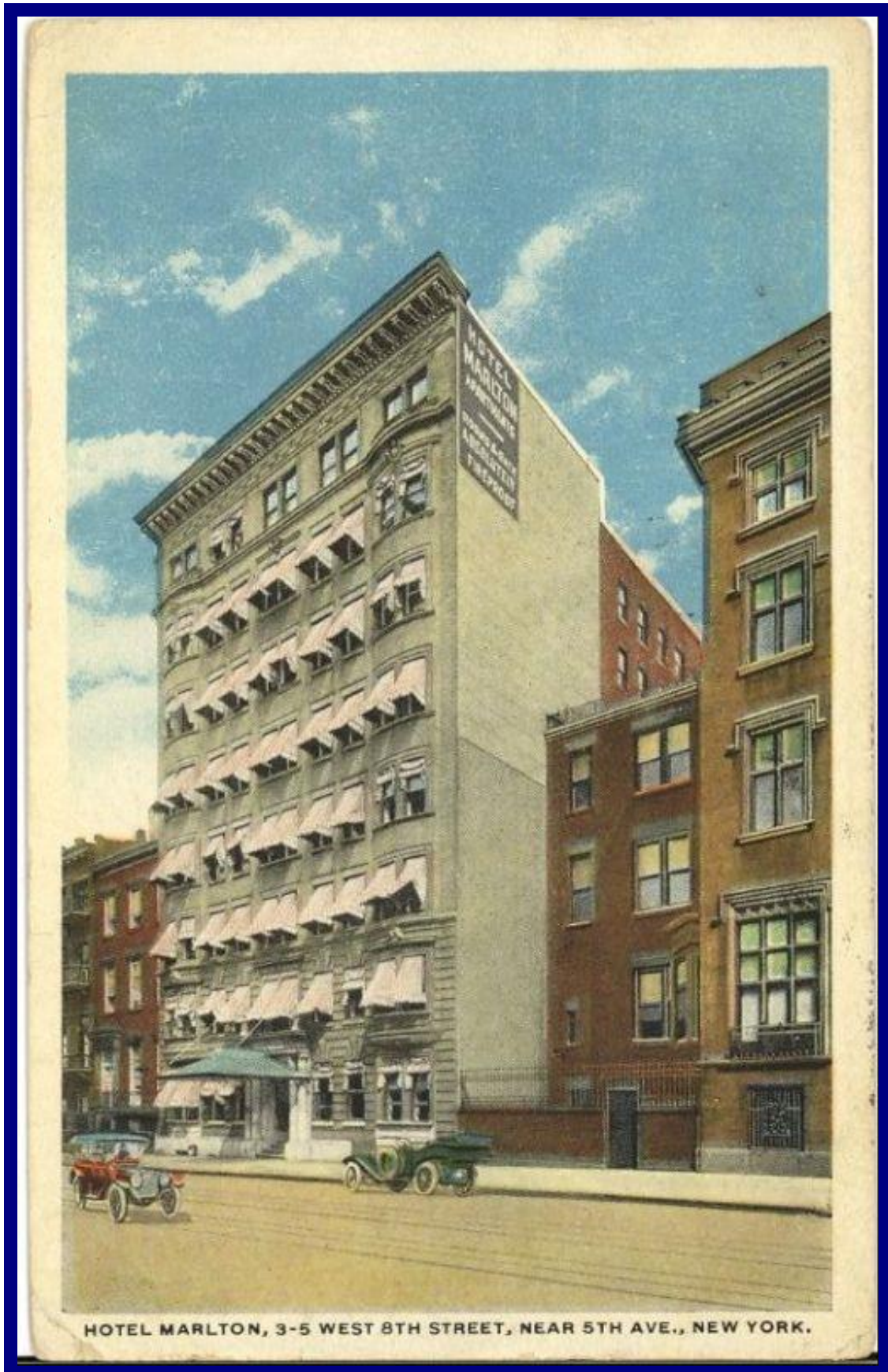
NEW YORK: NEW YORK CITY NAVARRE HOTEL



Built 1900, 112 ft high. Architect: Barney & Chapman. Demolished 1930.

<29>

NEW YORK: NEW YORK CITY HOTEL MARLTON



HOTEL MARLTON, 3-5 WEST 8TH STREET, NEAR 5TH AVE., NEW YORK.

Built 1912, 112 rooms. Located in Greenwich Village.

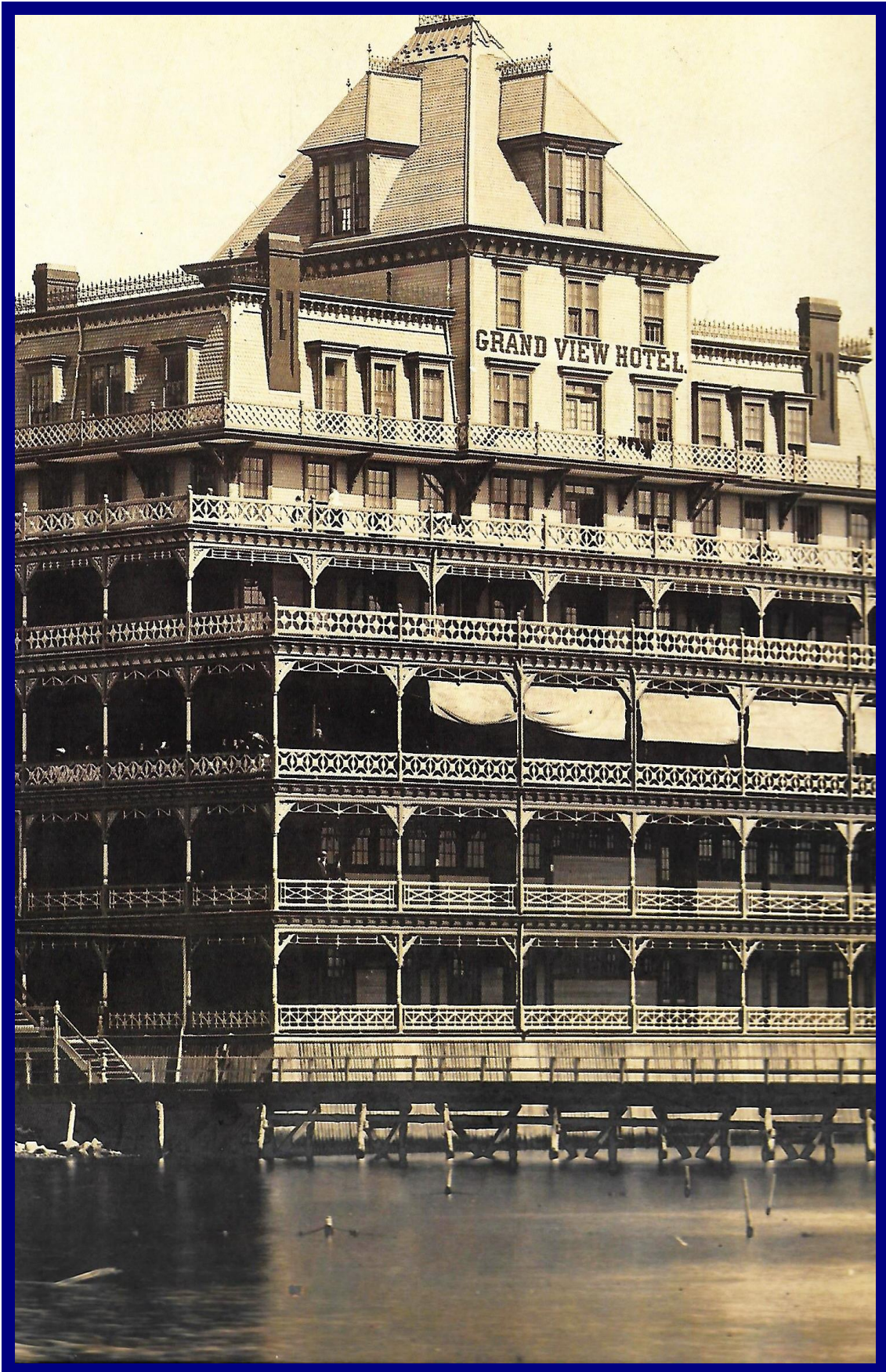
<30>

NEW YORK: NEW YORK CITY PLAZA HOTEL



Luxury hotel, opened 1907, 21 floors (11 elevators), 282 rooms & 181 condominiums.

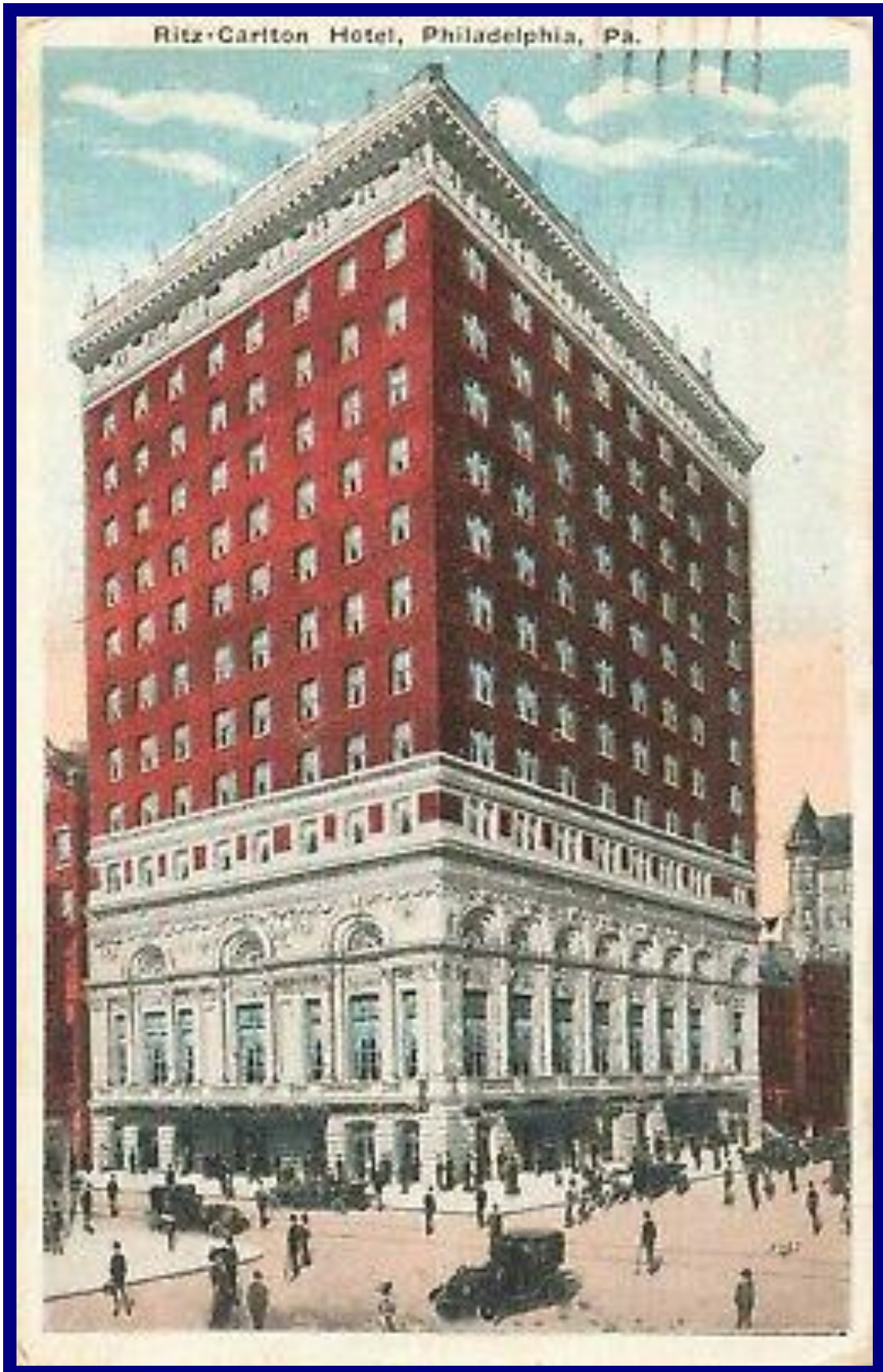
NEW YORK: NEW YORK CITY GRAND VIEW HOTEL, CONEY ISLAND



Built 1886, 208 rooms, 10 floors over water, 7 over land. Destroyed by fire in 1893.

<32>

PENNSYLVANIA: PHILADELPHIA RITZ-CARTLON HOTEL



Built 1930, 30 floors, 394 ft, 301 rooms. Architect: Furness, Evans & McKim, Mead & White.

PENNSYLVANIA: PHILADELPHIA
HOTEL ADELPHIA



HOTEL ADELPHIA
CHESTNUT AT 13TH STREET
NEAREST TO EVERYTHING IN PHILADELPHIA

Built 1912, 21 floors, 400 rooms. Architect: Horace Trumbauer.

PENNSYLVANIA: PHILADELPHIA

BELLEVUE-STRATFORD HOTEL



Built 1904, 19 floors, 1000 rooms. Architect: G.W. & W. D. Hewitt.

PENNSYLVANIA: PHILADELPHIA

WALTON HOTEL



Built 1908, 11 floors, 146 ft, 400 rooms (200 baths). Architect: Angus Wade. Demolished 1966.

TENNESSEE: MEMPHIS

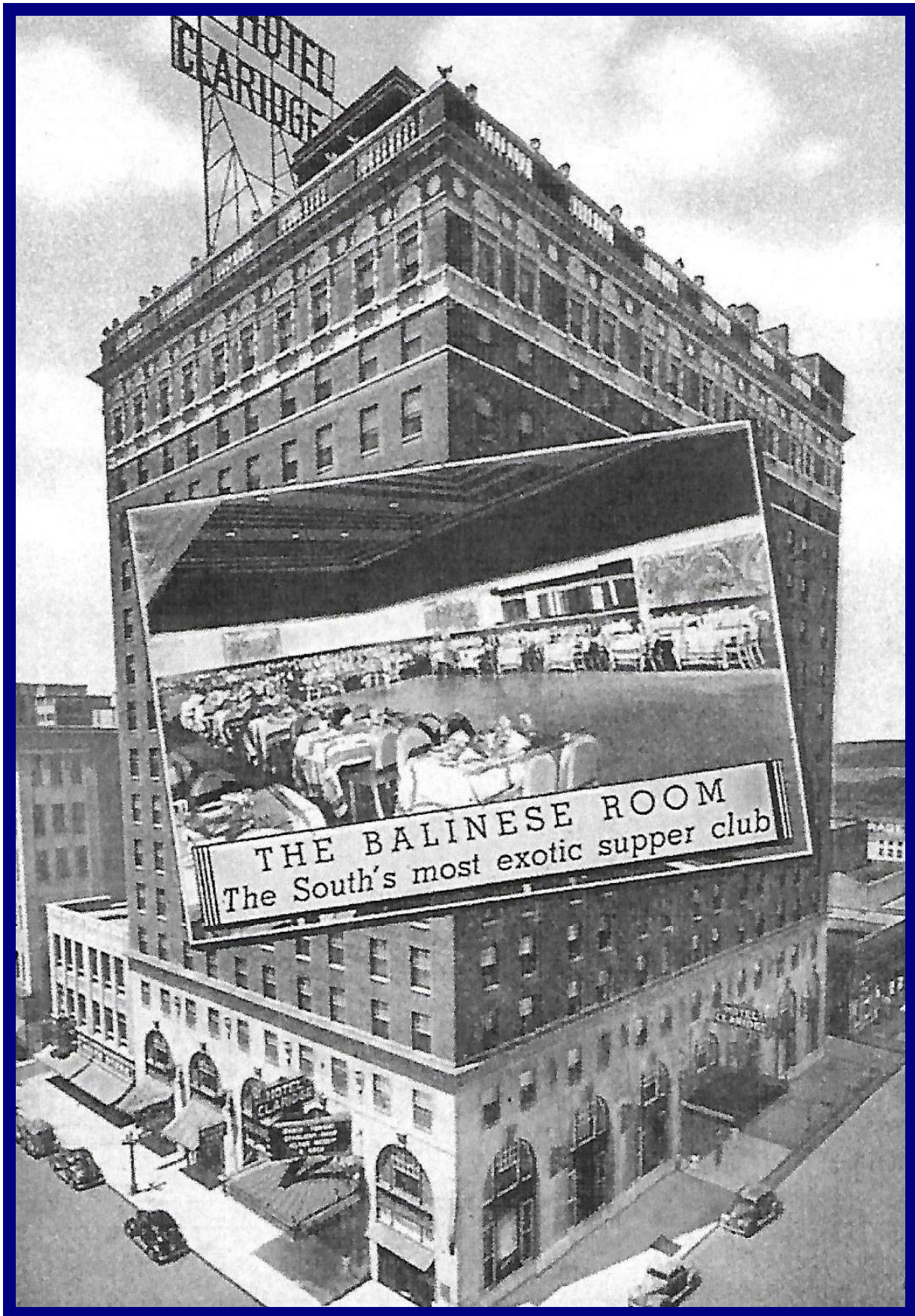
PEABODY HOTEL



Built 1925, 13 floors, 464 rooms (200 with baths). (See page 2). Architect: W.W. Ahlschlager.

TENNESSEE: MEMPHIS

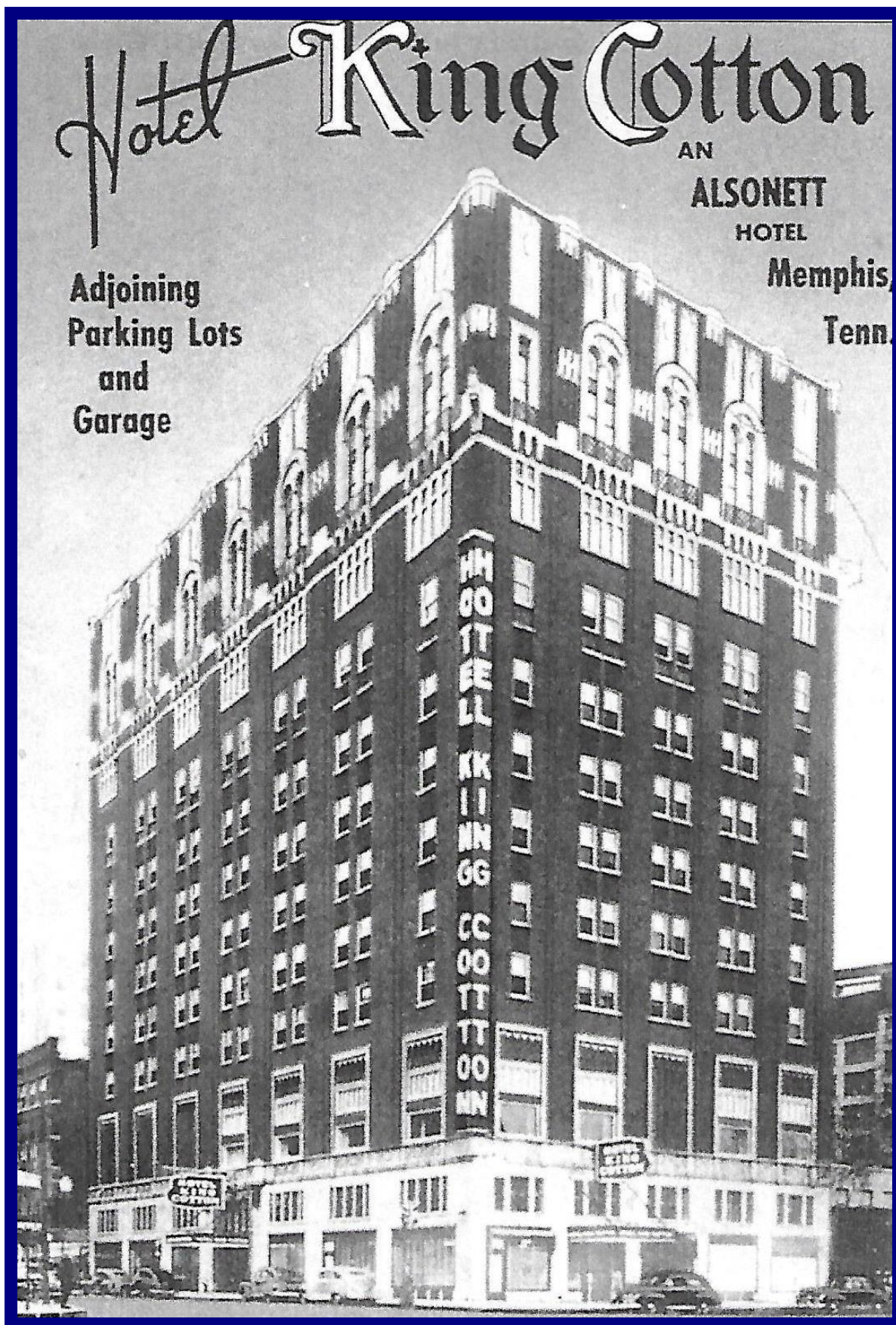
HOTEL CLARIDGE



Built 1924, 17 floors, 400 rooms. Architect: Jones & Furbringer.

TENNESSEE: MEMPHIS

HOTEL KING COTTON



Built 1925, 12 floors. Later renamed Hotel De Voy.

TENNESSEE: MEMPHIS
HOTEL DE VOY



Originally Hotel King Cotton. Closed 1972, demolished 1984.

<40>

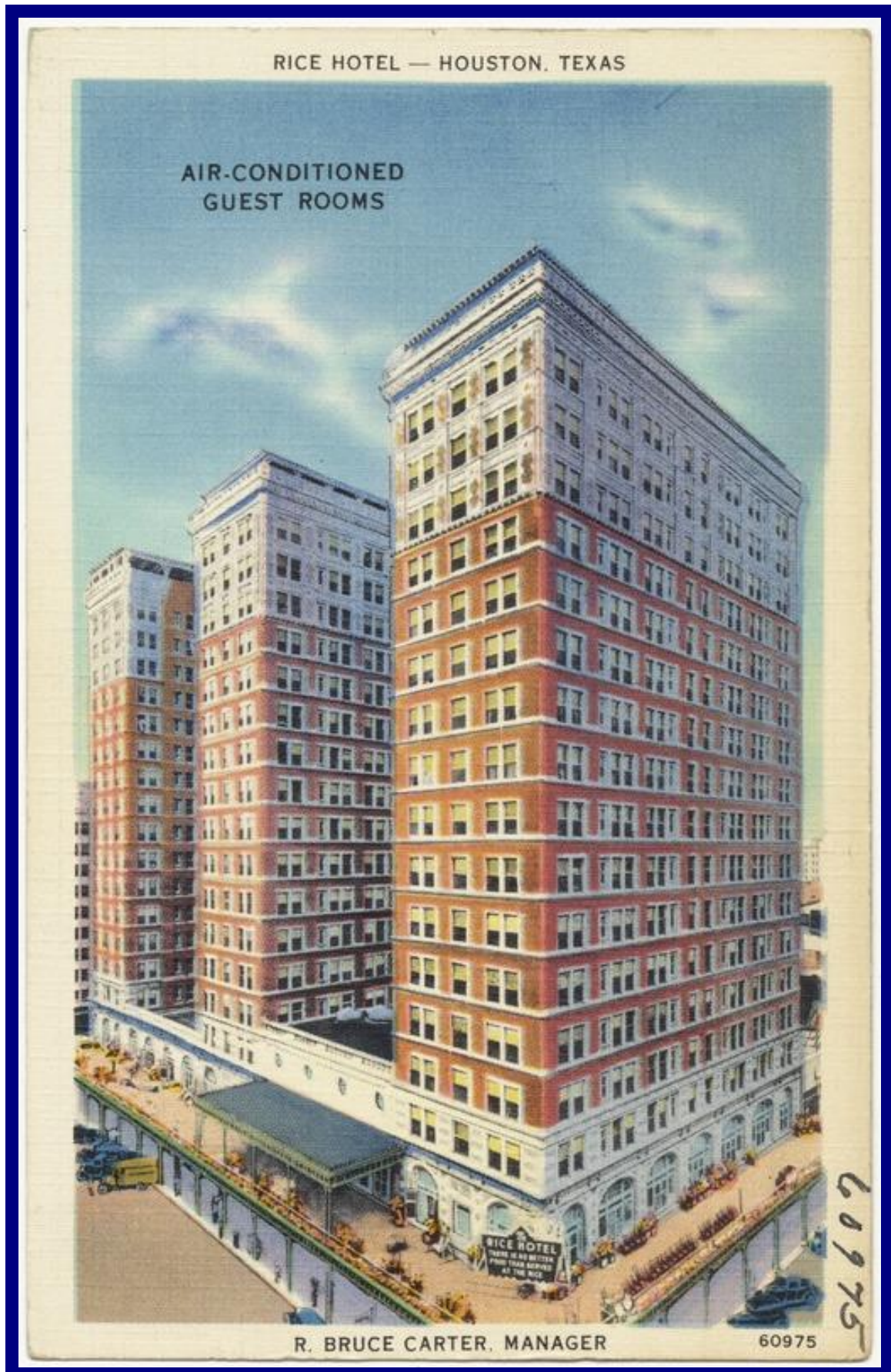
TEXAS: DALLAS ADOLPHUS HOTEL



Built 1912, 22 floors, 312 ft, 1200 rooms. Architect: Barnett, Haynes & Barnett.

<41>

TEXAS: HOUSTON RICE HOTEL



Built 1913, 17 floors (later air conditioned).

<42>

TEXAS: HOUSTON STATE HOTEL



Built 1929, 16 floors. Architect: Joseph Finger.

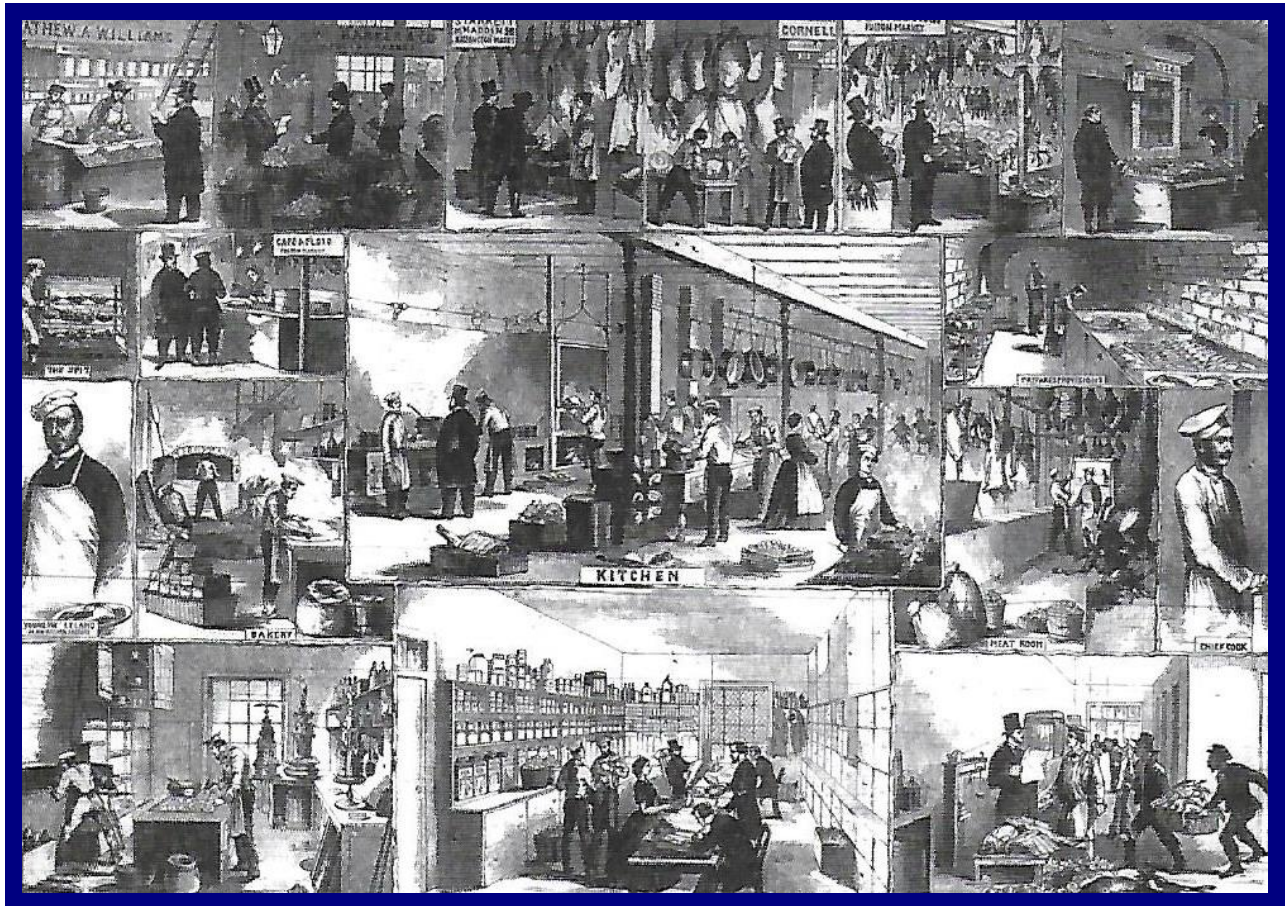
<43>

TEXAS: SAN ANTONIO PLAZA HOTEL



Built 1920s, 12 floors "The finest hotel in the South" became apartments in 1956.
Note the lobby ceiling fans.

KITCHENS OF A USA GRAND HOTEL



REFERENCES AND FURTHER READING

- 1980 Grand American Hotels, Donzel, Gregory & Walter, The Vendome Press, NYC.
1997 Manhattan Hotels 1980-1820, Jeff Hirsh, Arcadia Publishing, Charleston.
2002 The Peabody Hotel, Faragher & Harrington, Arcadia Publishing, Charleston.
2005 Grand Hotels of the Jazz Age, Lamonaca & Mogul (Eds), Princeton Arch. Press, NYC.
2005 Florida's Grand Hotels, R. Wayne Ayers, Arcadia Publishing, Charleston.
2008 Historic Hotels of Los Angeles & Hollywood, Ruth Wallach *et al*, Arcadia Publishing.
2014 Lost Grand Hotels of Cleveland, Michael DeAloia, The History Press, Charleston.
2014 Waldorf-Astoria, William Anderson Morrison, Arcadia Publishing, Charleston.
2020 The Lido Club Hotel, Joanne Belli, Arcadia Publishing, Charleston.
2020 Tampa Bay Hotel, Brown & Carter, Arcadia Publishing, Charleston.
2007 Hotel: An American History, A.K. Sandoval-Strausz, Yale University Press. New Haven.
2009 The Palace Hotel, Richard Harned, Arcadia Publishing, Charleston.
2016 Building Chicago: The Architectural Masterworks, John Zukowsky, Rizzoli, NYC.

Other information from the Heritage Group Archives, website and Historic Postcards.