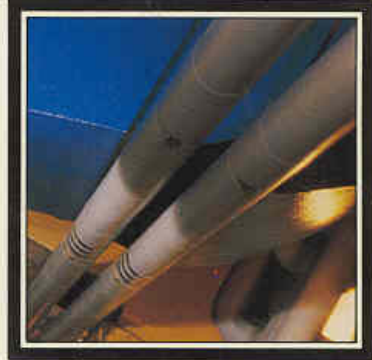




DRAKE & SCULL ENGINEERING INTO THE EIGHTIES

BROCHURE 1979

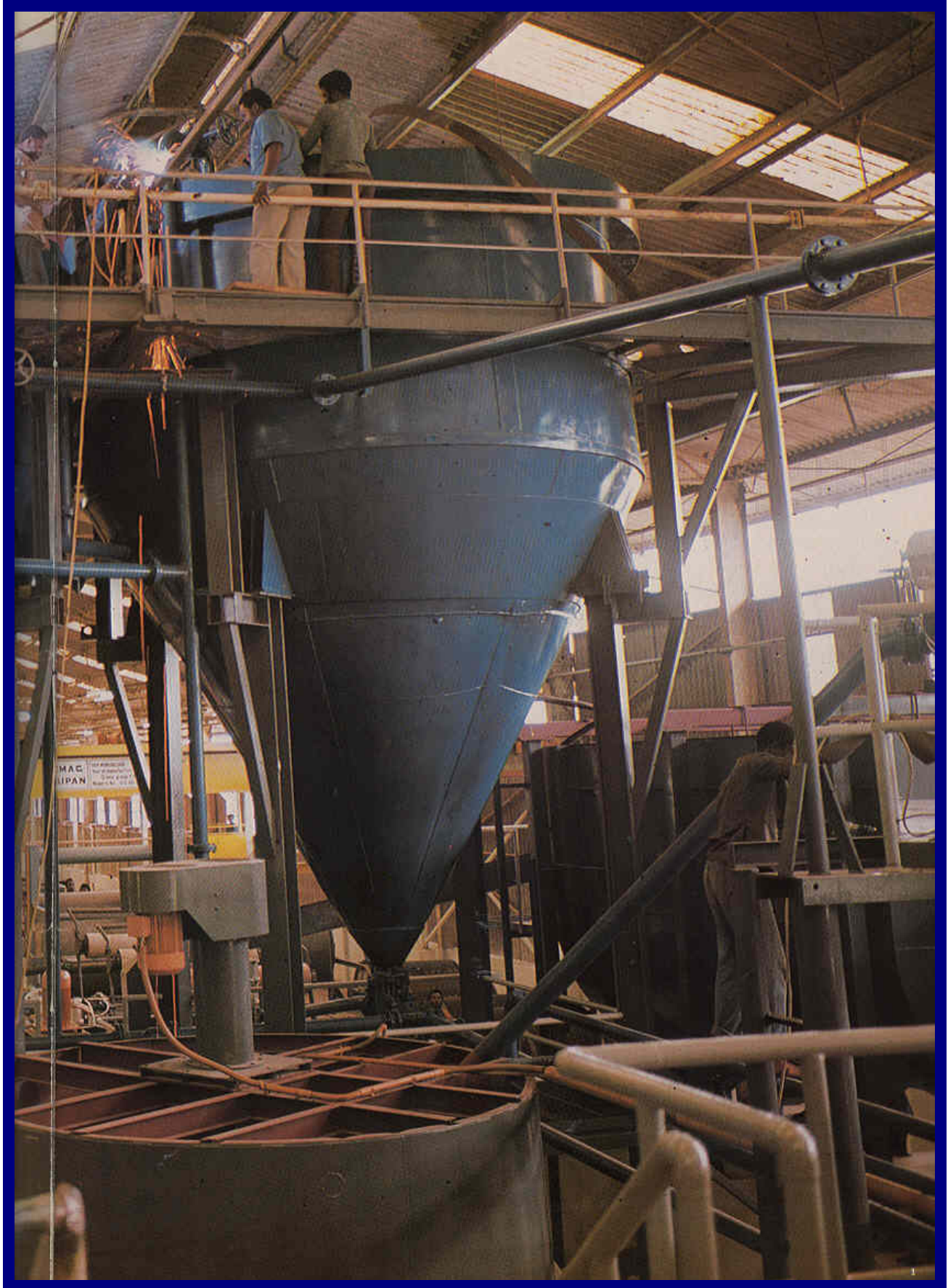
ENGINEERING INTO THE EIGHTIES



*This brochure was written by Brian Roberts, Chairman of the CIBSE Heritage Group
in 1979 when Company Chief Engineer of Drake & Scull.*



Turners Asbestos Cement Factory, Enugu, Nigeria



Turners Asbestos Cement Factory, Enugu, Nigeria



Above / King's Lynn District General Hospital / Drake and Scull was the main engineering services contractor for this new 'Best Buy' 500 bed hospital, installing the heating, ventilation and air conditioning, hot and cold water services, sanitation, medical gas supplies, fire protection, electrical power and lighting, street lighting, alarms and control systems.

Previous page / Turners Building Products (Emene) Ltd. Asbestos Cement Factory in Enugu, Nigeria / All the mechanical erection, pipe services and electrical installations to this new asbestos sheet production line were completed by Drake & Scull (Nigeria) Ltd.

ENGINEERING INTO THE EIGHTIES

At Drake & Scull we have been providing engineering services for buildings since 1881. From a small family business we have grown into one of the leading contractors in our field. Today we operate all over the United Kingdom and in many places around the world, with associated and subsidiary companies in the Middle East, Africa and South East Asia. We undertake the complete range of services usually found in buildings – heating, ventilation, air conditioning, plumbing, electrical and fire protection – as well as some of the more unusual, ranging from industrial piping to process instrumentation. Our engineering benefits people in many climates at home, at work and at play, and is essential to many manufacturing processes and products.

At Drake & Scull our greatest strength is our people. From our project management teams and support staff to our highly skilled craftsmen and operatives. For teamwork is what our business is all about – designers, estimators, planners, buyers, accountants, surveyors, project engineers, pipe fitters, welders, sheetmetal workers, plumbers, electricians, commissioning engineers and many more. All part of the Drake & Scull team. We can handle the complete project from start to finish. We know how to integrate services with building and structure. How to co-ordinate the complex network of piping, cables and equipment. We don't claim to be perfect but we believe that with our experience and resources we are better able than most to ensure that our clients get their projects completed on time, within budget and in full working order.

We work in all types of commercial and industrial buildings, in both the public and private sectors – ranging from offices, hotels, banks, department stores, schools and universities to hospitals, factories and housing developments.

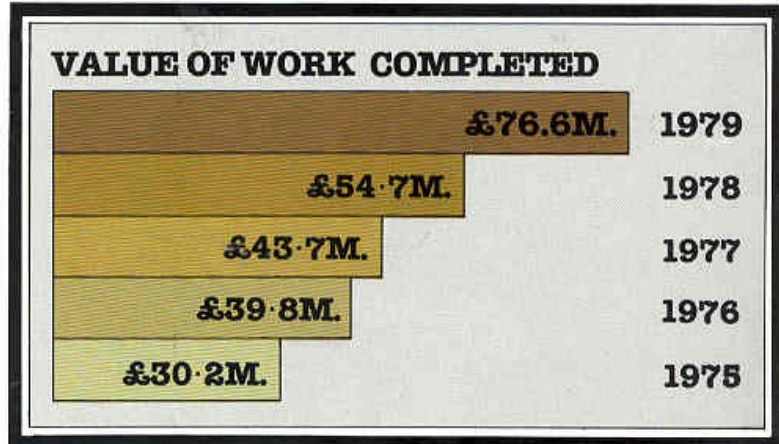
At Drake & Scull, **ENGINEERING IS OUR BUSINESS.** In the following pages we show you just a small selection of some of our recent projects, the places where we work and, of course, – our people.

We hope you will agree we are very well placed to meet the challenge of **ENGINEERING INTO THE EIGHTIES.**

THIS IS DRAKE & SCULL

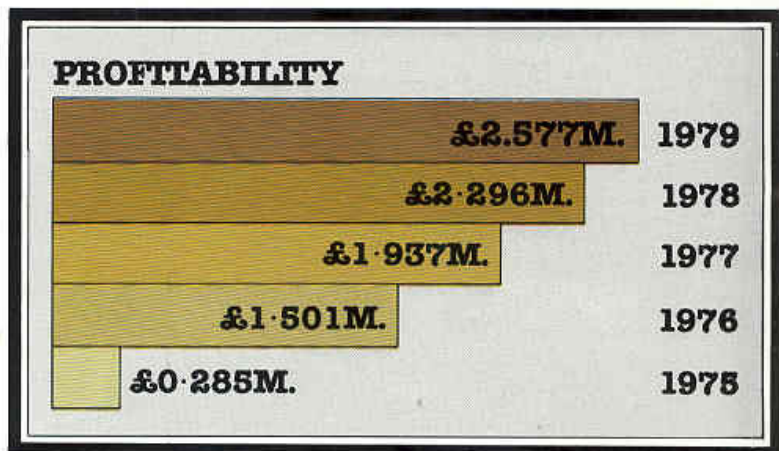
VALUE OF WORK COMPLETED

We have successfully achieved a carefully planned expansion of our business over the past years – both in the traditional commercial, industrial and housing sectors, and in newer areas like process instrumentation, heat recovery and refurbishing work.



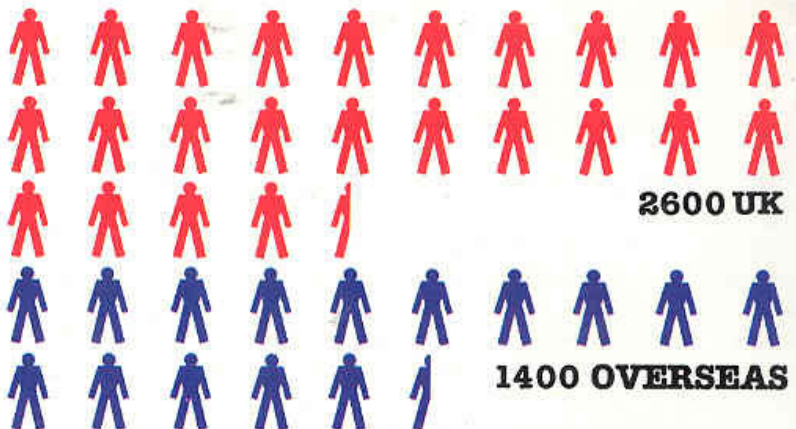
PROFITABILITY

We run a successful and competitive business. Our aims are to satisfy our clients and to earn a reasonable profit for ourselves; which is why we are continually striving to improve our performance and to maintain our high standards of engineering.

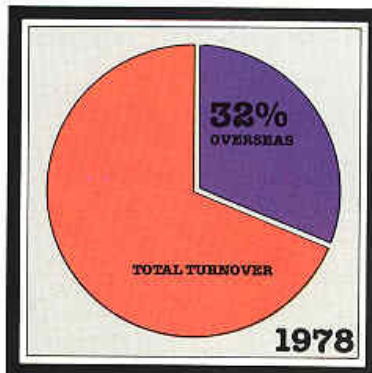
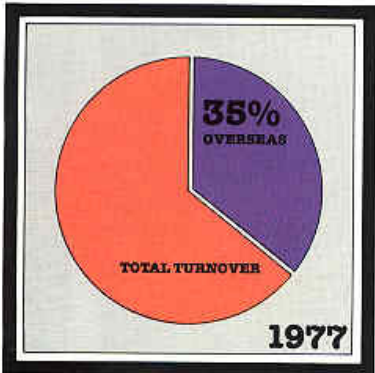
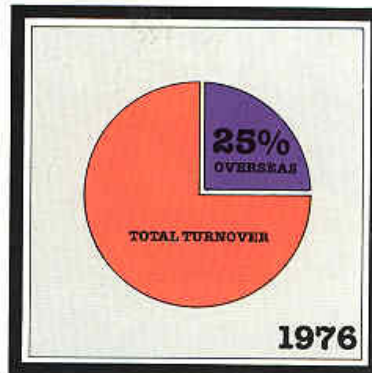
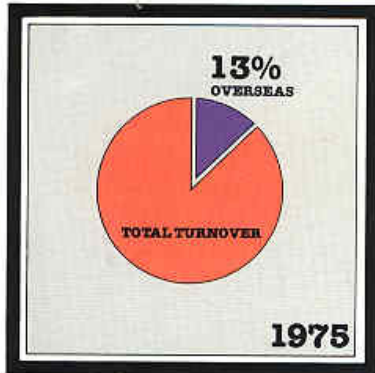


PEOPLE

Our greatest asset is our people – some 4000 directly employed engineers, managers, support staff and skilled operatives – handling a wide variety of single-service and multi-service projects.

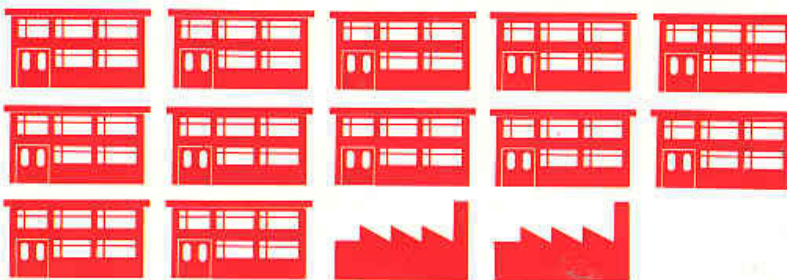
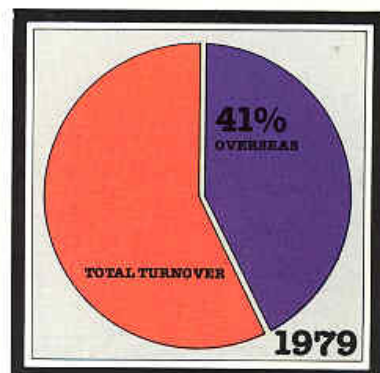


TOTAL PEOPLE: 4000

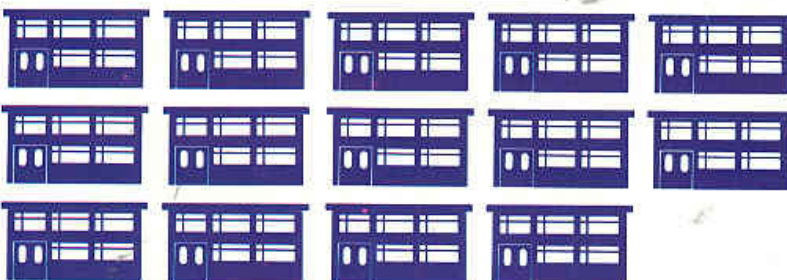


WORK OVERSEAS

Drake & Scull is justly proud of its reputation in the international marketplace. Although not looking to be the world's biggest contractor we are in all modesty trying to be the best.



UK



OVERSEAS

TOTAL: 26 OFFICES 2 FACTORIES

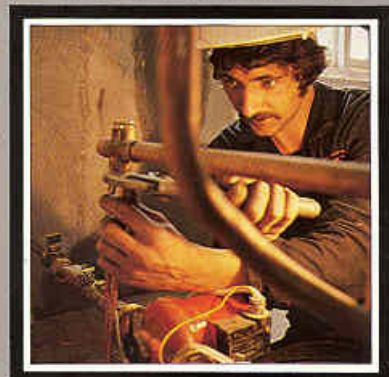
OFFICES

We have 26 permanent offices and 2 factories – one for instrumentation, the other for piping and metal fabrication – as well as fully equipped site offices and workshops on the larger projects.

We also have all of the plant and equipment one would expect from a leading engineering services contractor, including some 550 vehicles, ranging from fork-lift trucks to cranes and heavy plant.

ENGINEERING IS OUR BUSINESS





DRAKE & SCULL IN THE UNITED KINGDOM



Suffolk County Council Offices, Ipswich



Above / Willis, Faber & Dumas Ltd., Head Office Ipswich / All the mechanical engineering services for this RIBA award winning office building accommodating some 1350 people were installed by Drake & Scull. Heavy mechanical equipment including the fridge unit above is located at ground floor level, where it forms an architectural feature visible through the glass walls.



Opposite / Suffolk County Council Offices, Ipswich / Photo Shows Section of the main plant room within this new accommodation for Suffolk County Council. Air conditioning, heating, domestic hot water, chilled water, cooling tower water pipework, fire hose services and dry riser installations comprised the services installed by Drakes & Scull.

ENGLAND AND WALES



Imperial Cancer Research Fund, London



Above / King's Lynn District General Hospital / Drake & Scull was the main engineering services contractor for this new 'Best Buy' 500 bed hospital, installing the heating, ventilation and air conditioning, hot and cold water services, sanitation, medical gas supplies, fire protection, electrical power and lighting, street lighting, alarms and control systems.

Opposite/ Imperial Cancer Research Fund / Drake & Scull was responsible for all electrical work including switch gear and cabling to the main research unit for the Imperial Cancer Research Fund.

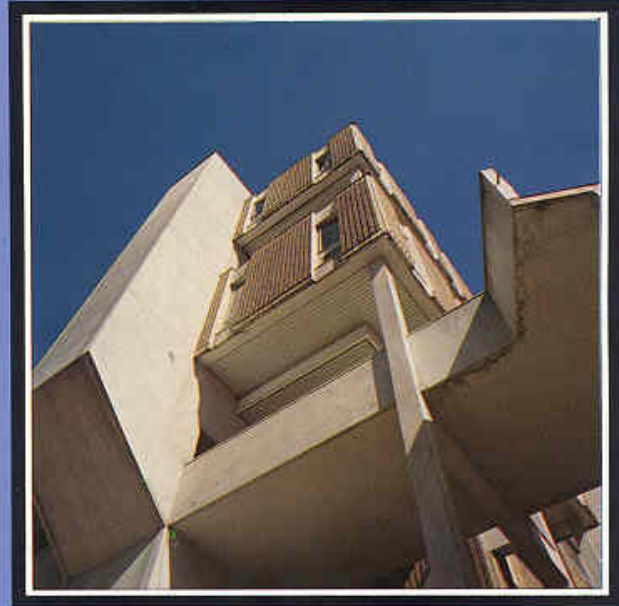


Top / Barclays Bank Ltd., London / Drake & Scull has completed a large number of contracts for Barclays Bank Ltd. during the last 20 years. One of the latest projects included the provision of specialist lighting and power supplies to a new banking hall and office accommodation at Gracechurch Street in the City of London.

Bottom / King's Lynn District General Hospital / Photo shows one of the kitchen areas within this 500 bed 'Rest Bay' hospital. Drake & Scull installed all the mechanical and electrical engineering services.

Top / Willis, Faber & Dumas Ltd., Head Office, Ipswich / The mechanical services for this project were installed by Drake & Scull, and included air conditioned office areas, with heating supplied by natural gas fire boilers and separate systems for the data processing computer and electronic telephone exchange.

Bottom / Greene King Brewery, Bury St. Edmunds / All mechanical and electrical engineering services for this brewery were installed by Drake & Scull.

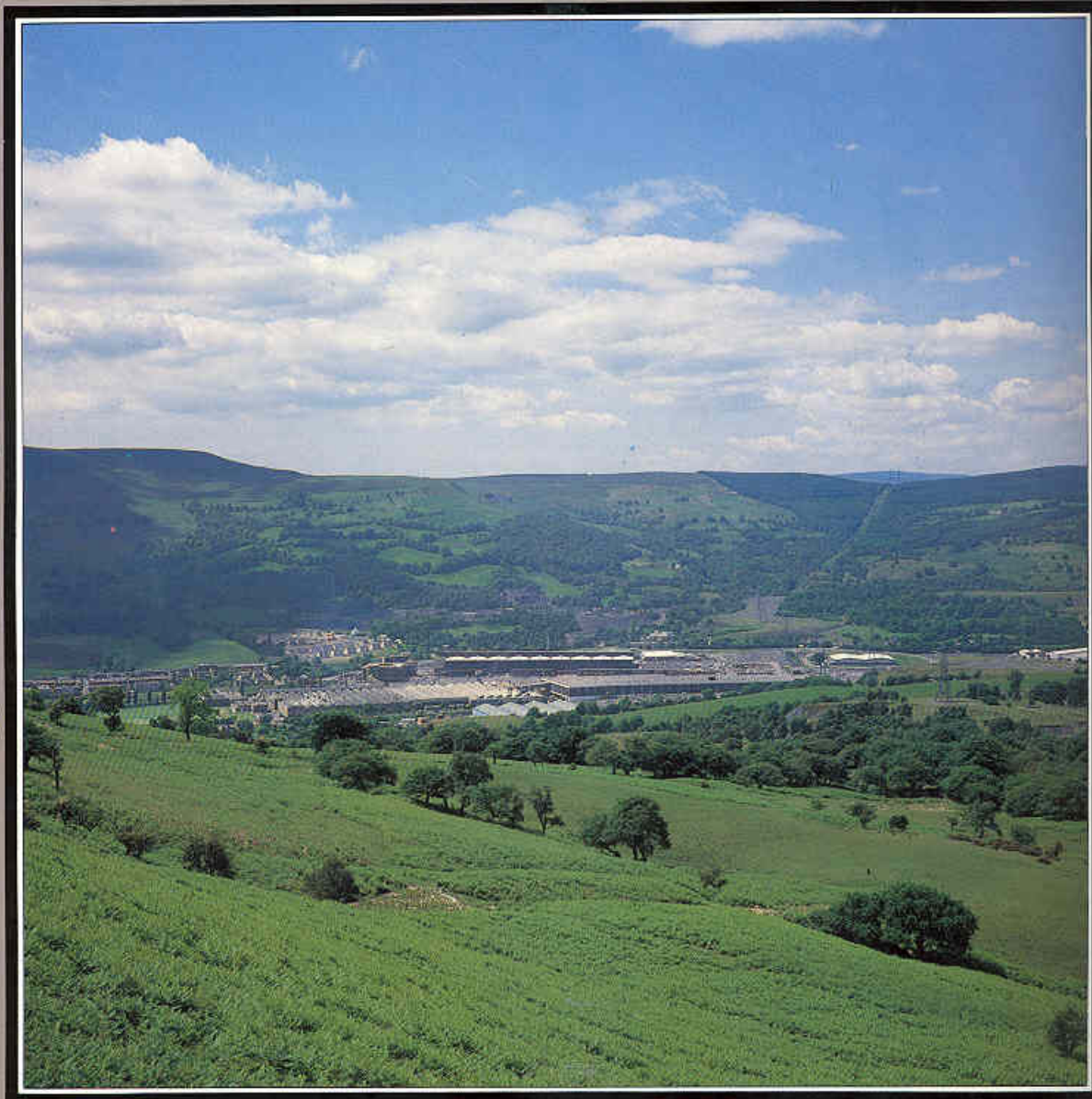


Top / Plymouth Magistrates Court / Drake & Scull was responsible for the mechanical and electrical services for this three-storey complex comprising six courts and one juvenile court.

Top / Empire Dairies Limited, Butter Packing Plant, Swindon / All the mechanical and electrical engineering services associated with this building, together with the process equipment, were installed by Drake & Scull.

Bottom / Connaught Mansions, Pultney Street, Bath / Domestic hot and cold water services, sanitation, ventilation and electrical work comprised Drake & Scull's contract for conversion of the former 'Pultney Hotel' into 81 luxury flats.

Bottom / Bristol Magistrates Court / All the mechanical engineering services (including air conditioning to all courts and ancillary areas) were installed by Drake & Scull.



Above / Hoover, Merthyr Tydfil / Drake & Scull was responsible for all the mechanical and electrical services in 28,000 sq. ft. of production buildings, ancillary buildings, cafeteria and boiler house.

Opposite / Courage's Brewery, Berkshire / Drake & Scull was entrusted with the complete electrical installation works to the packaging building energy centre and brewing complex. More than 500 miles of mains and general wiring cable were used in the installation for power, small power, lighting, fire alarms and other systems including those associated with the process plant in the brew house area and computer managed work control centre.



Courage's Brewery, Berkshire





Top / Instrumentation Division / Picture shows a control panel for the Yorkshire Water Authority (South West Division) under test.

Bottom / Instrumentation Division / Design, planning and manufacture is carried out at the division's factory in Bristol.

Top / British Gas, Wytech Farm / Drake & Scull was responsible for all instrumentation and cabling installations for this Wytech Farm Oilfield Development.

Bottom / Dousland Water Treatment Works / Drake & Scull was responsible for electrical and instrumentation installations at this water treatment works for the South West Water Authority.

Opposite / Drake & Scull Instrumentation Division / Picture shows work in progress during manufacture at the division's factory in Bristol.



Top / IBM United Kingdom Limited, Baltic House, Portsmouth / The Drake & Scull contract for this project comprised the installation of lighting and power to all areas including the teaching facility and computer suite. Under an earlier contract we were responsible for the installation of all plumbing services.

Bottom / HCB Angus Factory, Southampton / Heating, ventilation, gas, compressed air and plumbing services to this factory and office development, which is the head quarters of a leading fire engine manufacturer, were provided by Drake and Scull.

Top / Leamington and Solihull Flats, Portsmouth / Drake & Scull provided low pressure hot water, gas fired central heating to two tower blocks, from a central boiler house, comprising a total of 274 flats.

Bottom / IBM United Kingdom Limited, Portsmouth / All mechanical and electrical services for this two-stage refurbishment project, were carried out by Drake and Scull, and embraced air conditioning, mains switchboard, cabling and switchgear. As main contractor for Stage 2, ceilings, floors and other builders' works items were also included.



Above / IBM United Kingdom Limited, Havant / Drake & Scull was responsible for the installation of air conditioning, heating and plumbing services to Phases 6 and 7 of this manufacturing plant. Under the contract, the power house and satellite plant rooms were upgraded to accommodate the new facilities. Photo shows the chilled water pipework rising externally, adjacent to the west escape staircase.

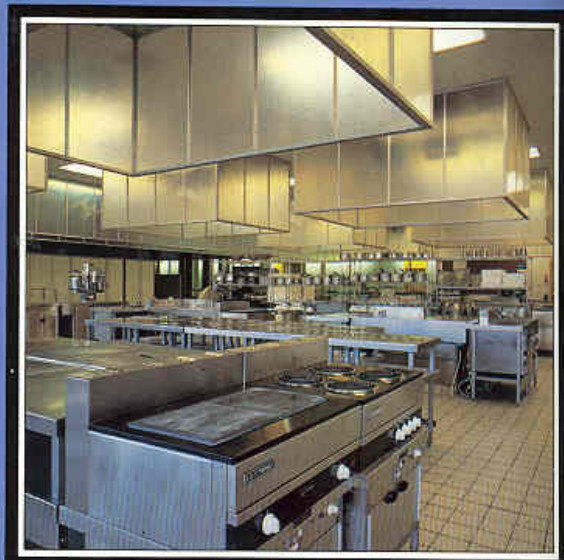


Portsmouth Head Post Office



Top / Cheshire Building Society, Macclesfield / This contract comprised the installation of lighting, small power, fire alarm, communication systems, wiring to the VDU terminals and processors, air conditioning, plumbing and heating services.

Opposite / Portsmouth Head Post Office / Drake & Scull was awarded the contract for the installation of heating, ventilation, automatic controls, plumbing and fire protection services to the entire complex. The mechanised sorting office has a floor area of more than one third of an acre.



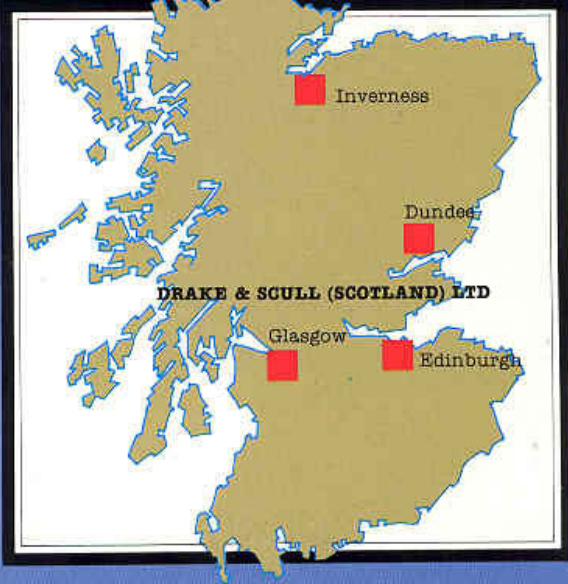
Top / Cheshire Building Society, Macclesfield / This contract comprised the installation of lighting, small power, fire alarm, communication systems, wiring to the VDU terminals and processors, air conditioning, plumbing and heating services.

Bottom / Milk Marketing Board, Aston Creamery, Cheshire / Sinclair & Clarke (Engineers) Ltd was responsible for the installation of cheese vats, starter room equipment and associated stainless steel pipework for this modern creamery.

Top / Thomas Danbury College, Leeds / Drake & Scull was responsible for the installation of all air conditioning and ventilation systems, heating, domestic hot and cold water services, plumbing, gas services, steam generation equipment and fire protection services.

Bottom / The Morrison Centre, Darlington / Heating, ventilation and mechanical engineering services were installed by Drake & Scull to this leisure centre, headquarters of the Darlington and District Indoor Bowls Club.

SCOTLAND



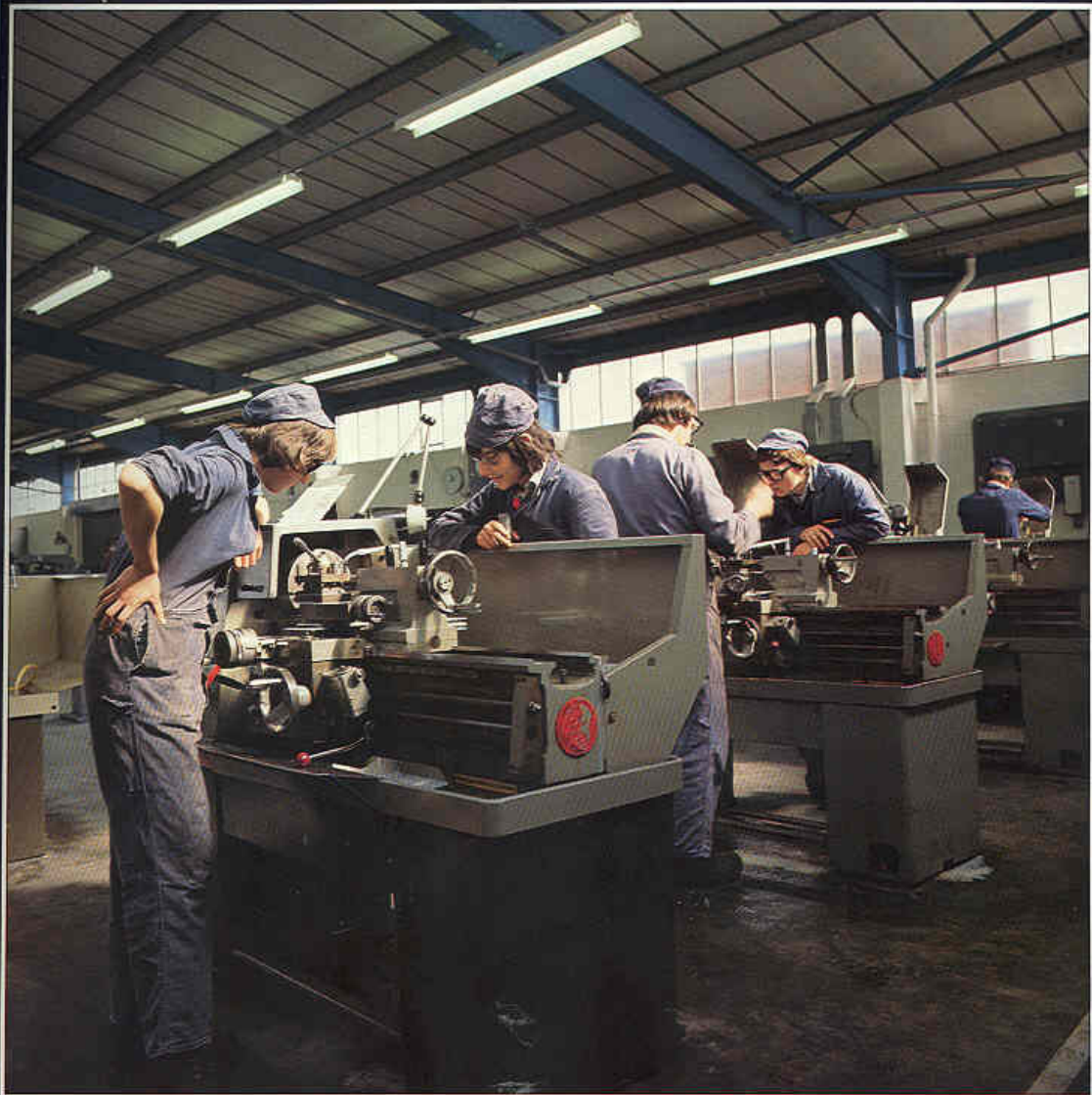
Top / Holiday Inn Hotel, Glasgow, Strathclyde / with 300 rooms, three restaurants, two bars, a swimming pool and a heart-shaped pulsating jacuzzi, this luxury hotel is one of the largest and best-equipped in western Scotland. Drake & Scull (Scotland) Ltd was responsible for the design, supply and installation of all mechanical, electrical and sanitary services to the hotel.

Bottom / British Rail, High Speed Depot, Craigentinny, Edinburgh / Drake & Scull (Scotland) Ltd. and H. E. Stirling & Co. Ltd. were responsible for the installation of mechanical services and pit panels in three sheds of this depot.

Bottom / House Modernisation in Scotland / Drake & Scull has modernised more than 80,000 homes throughout the United Kingdom and is able to offer a total service if required. This includes all builders' work items, embracing joinery, plastering, roofing, kitchen and bathroom fixtures as well as the traditional mechanical and electrical services.



Computer Centre, Edinburgh



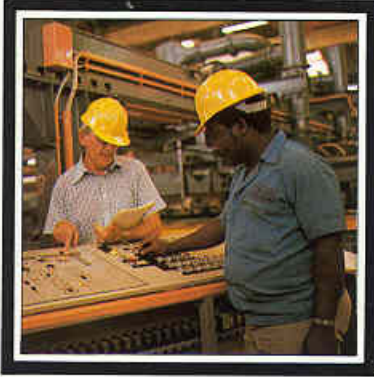
Above / E.I.T.B. Training Centre, Arbroath / Drake & Scull (Scotland) Ltd. was responsible for the installation of all mechanical services which included oil-fired central heating, hot and cold water, gas supplies, ventilation and exhaust systems.

Opposite/ Computer Centre, Edinburgh / Photo shows the main plant room of this computer centre in Edinburgh where Drake & Scull (Scotland) Ltd. has installed all the mechanical engineering services.

DRAKE & SCULL OVERSEAS



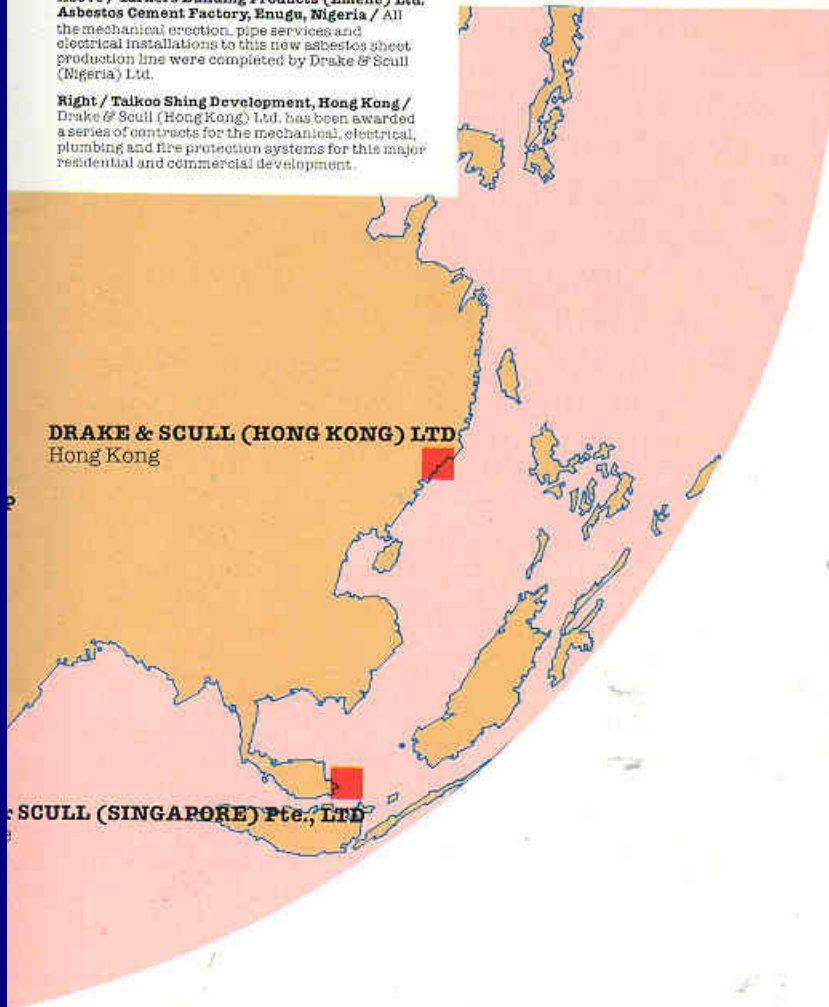
Above / Al Fajer Department Store, Dubai, U.A.E. /
The electrical contract completed by Lunar Drake & Scull (U.A.E.) comprised the installation of general lighting, standby generator systems and fire protection systems for this 19 department, two-storey department store, one of the biggest of its kind in the U.A.E.



Above / Turners Building Products (Emene) Ltd. Asbestos Cement Factory, Enugu, Nigeria / All the mechanical erection, pipe services and electrical installations to this new asbestos sheet production line were completed by Drake & Scull (Nigeria) Ltd.



Right / Talkoo Shing Development, Hong Kong / Drake & Scull (Hong Kong) Ltd. has been awarded a series of contracts for the mechanical, electrical, plumbing and fire protection systems for this major residential and commercial development.



DRAKE & SCULL (HONG KONG) LTD
Hong Kong

SCULL (SINGAPORE) Pte., LTD

Drake & Scull has been operating successfully in overseas countries for more than 30 years. We know how to handle their climatic, technical and commercial requirements. And how to respect their historical, cultural and political traditions.

We have worked extensively in many countries in Africa and the Middle East, and have carried out projects in the Caribbean, Europe and in Asia. We know how to plan, manage and commission complex engineering projects, often under difficult conditions in remote locations which is why our overseas clients rely heavily on the experience and resources which we have developed over the years.

The following pages show some of our Overseas projects and, of course, some of our people.

MIDDLE EAST



Above / Rashidiya Water Tank, Dubai, U.A.E. / Lunar Drake & Scull (U.A.E.) was responsible for all mechanical and electrical engineering services associated with the construction of this 12 million gallon water tank.



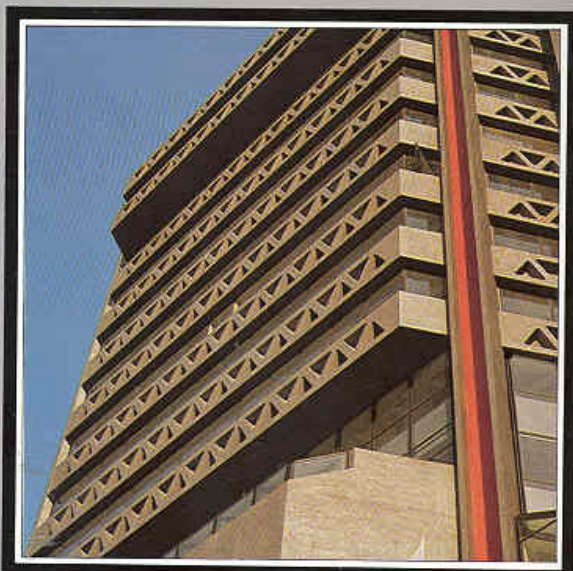
Top / Al Fajer Department Store, Dubai, U.A.E. /
 The electrical contract completed by Lunar Drake & Scull (U.A.E.) comprised the installation of general lighting, standby generator systems and fire protection systems for this 19 department, two-storey department store, one of the biggest of its kind in the U.A.E.

Above / Rashidiya Water Tank, Dubai, U.A.E. /
 Lunar Drake & Scull (U.A.E.) was responsible for all mechanical and electrical engineering services associated with the construction of this 12 million gallon water tank.

Bottom / C.M.C. Stadium, Dubai, U.A.E. / All air conditioning, electrical and plumbing services were completed by Lunar Drake & Scull (U.A.E.). Also included were the supply and erection of four floodlight towers which provide a high lighting intensity, designed to permit colour TV transmission.



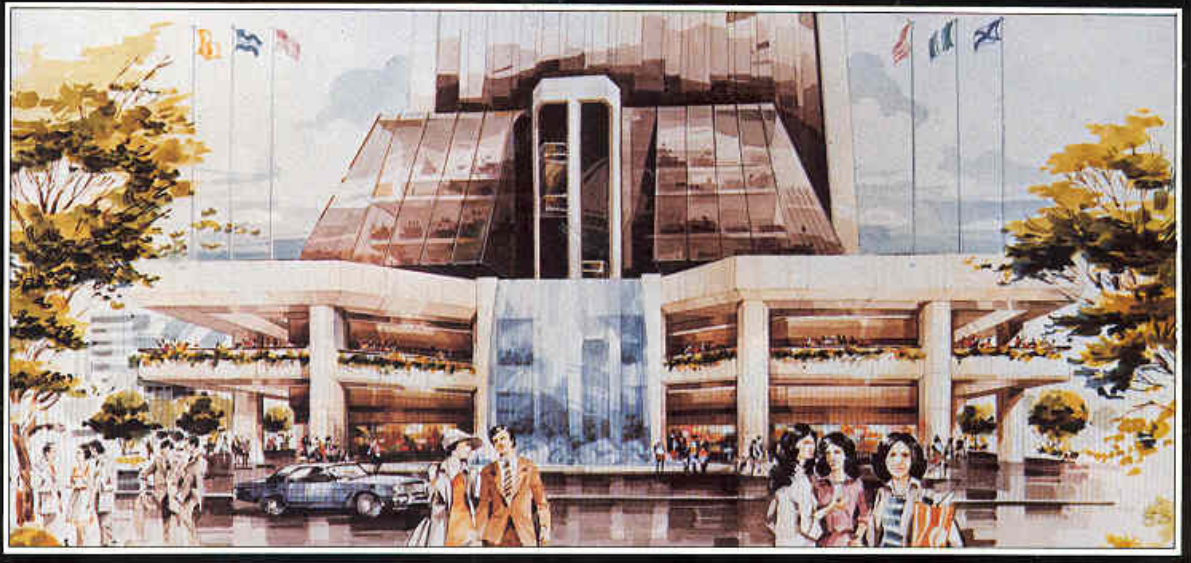
SOUTH EAST ASIA



Top / Mass Transit Railway Corporation, Administration Headquarters, Hong Kong / Drake & Scull (Hong Kong) Ltd. was awarded the multi-service contract for this new complex.

Top / Tyco Toy Factory, Hong Kong / Drake & Scull (Hong Kong) Ltd. was responsible for the design and installation of all air conditioning, specialist ventilation and electrical systems for this project.

Bottom / Arts Centre, Hong Kong / The Arts Centre comprises a 463-seat theatre, a 208-seat recital hall and studio theatre for 100 people, together with rehearsal rooms, split level exhibition gallery, restaurants and offices. Drake & Scull (Hong Kong) Ltd. was the engineering services contractor installing air conditioning, electrical, plumbing and fire protection services.



Top / Sun Hung Kai Centre, Hong Kong / Drake & Scull (Hong Kong) Ltd. is responsible for the design of all engineering services for this 50 storey tower complex.

Bottom / Sha Tin Teaching Hospital, Hong Kong / Drake & Scull (Hong Kong) Ltd. has been awarded the contract for the installation of all air conditioning, ventilation and steam plant comprising a central chilled water system, central air handling plant and air terminals. When fully completed in 1992 the hospital will have 1400 beds and serve 700,000 people in the eastern area of the New Territories.

AFRICA



Sheet Metal Shop, Nigeria



Above / Registrar General Building, Mauritius / Photos show a section of staircase and bar in the Banqueting Hall and part of the main plant room within the complex where Drake & Scull was awarded the design and installation of all mechanical, electrical, public, fire protection and air conditioning services.



DRAKE & SCULL (NIGERIA) LTD
Kaduna, Nigeria

DRAKE & SCULL (NIGERIA) LTD
Lagos, Nigeria

DRAKE & GORHAM (ZAMBIA) LTD
Ndola, Zambia

DRAKE & GORHAM (ZAMBIA) LTD
Lusaka, Zambia

DRAKE & SCULL
Dar Es Salaam, Tanzania



Top / Inner Ring Road Street Lighting, Lagos, Nigeria / Drake & Scull (Nigeria) Ltd. installed 1008 columns, 65 masts and 1918 lamps and lanterns over 13 km of double dual carriageway on the new Lagos ringroad and spur connections.

Middle & Bottom / Poultry Processing Plant, Lusaka, Zambia / Drake & Gorham (Zambia) Ltd. were the mechanical services engineers responsible for the supply of all mechanical equipment and associated pipework. The plant is designed to handle more than 1000 birds per hour and is the largest of its kind in Zambia.

Top & Middle / Eternit Sapele Limited, Asbestos Factory, Nigeria / Drake & Scull (Nigeria) Ltd. was responsible for the electrical installation of this project comprising high voltage and low voltage switch gear, cabling, lighting and power services to manufacturing plant.

Bottom / African Timber and Plywood, Timber Production Plant, Nigeria / Drake & Scull (Nigeria) Ltd. carried out this single service electrical project comprising installation of high voltage and low voltage switch gear, cabling, lighting, power and services to manufacturing equipment, producing finished timber of all sizes from raw material.

Top & Middle / College of Science and Technology, Port Harcourt, Nigeria / Drake & Scull (Nigeria) Ltd. was responsible for the supply of all internal plumbing and electrical services to this new 14 block campus in Port Harcourt, Nigeria.

Bottom / Central Power Station, Port Harcourt, Nigeria / Drake & Scull (Nigeria) Ltd. provided the electrical service installation to this new complex for the River State Government.



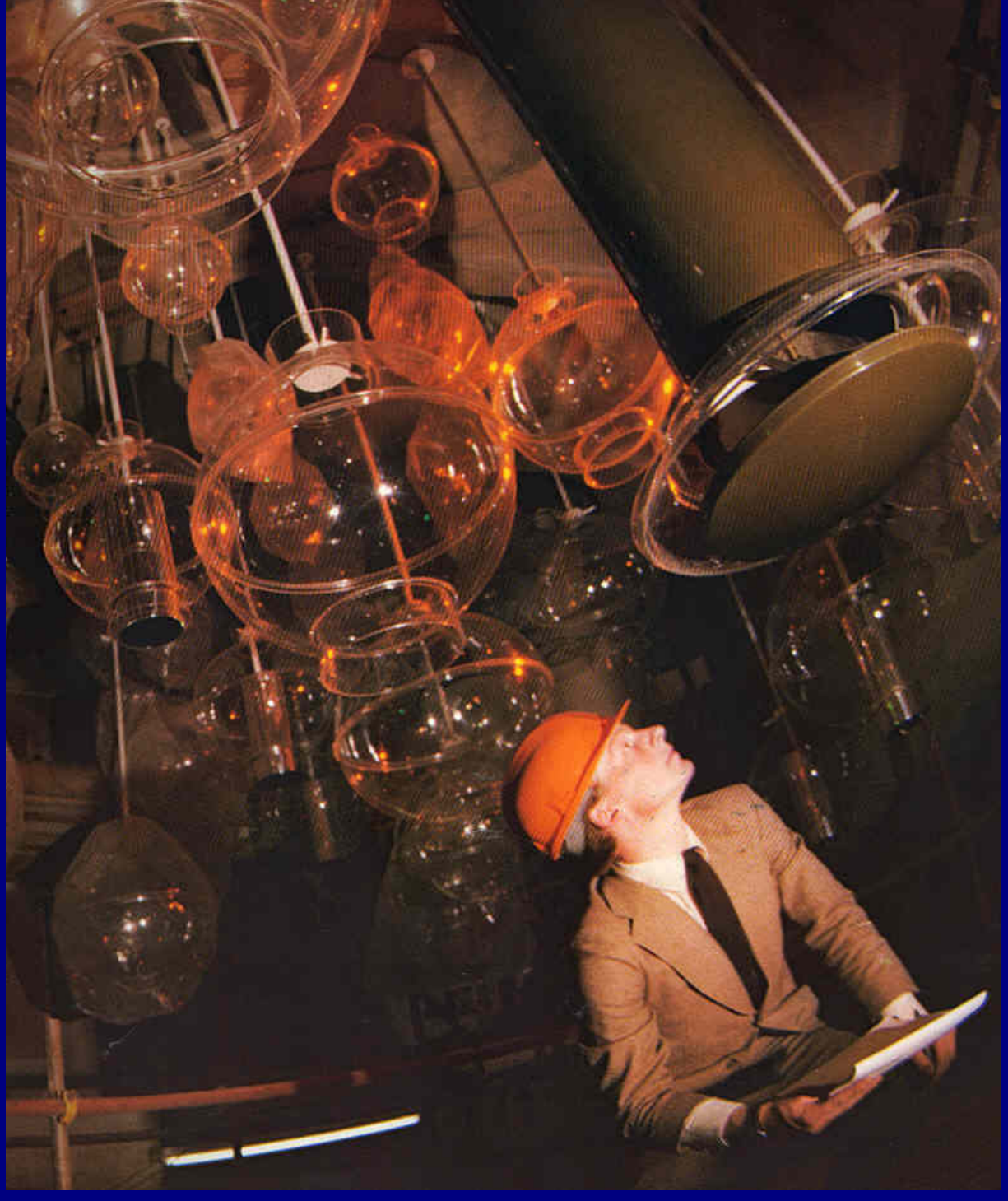
Above / Secretariat and Museum Complex, Port Harcourt, Nigeria / Drake & Scull (Nigeria) Ltd. was responsible for all electrical, mechanical, air conditioning, and plumbing services to this new complex.

Overleaf / Barbican Arts and Conference Centre, London / Drake & Scull was the electrical and mechanical services contractor for this complex construction project completed in 1988. The centre includes a large concert hall, theatre, public library, art gallery, cinema, the Guildhall School of Music and Drama, shops and restaurants. Photo shows suspended acrylic spheres (designed to be both ornate and acoustic) and ventilation droppers, one of fifty-six suspended from the concert hall roof.



Barbican Arts & Conference Centre, London

**ABU DHABI / BIRMINGHAM / BRISTOL / BURY ST EDMUNDS
CARDIFF / CARSHALTON / CHANDLERS FORD / COSHAM
CROYDON / DAMMAM / DAR ES SALAAM / DUBAI / DUNDEE
EDINBURGH / GATESHEAD / GLASGOW / HONG KONG
INVERNESS / KADUNA / LAGOS / LIVERPOOL / LONDON
LUSAKA / MANCHESTER / MILTON KEYNES / NDOLA
PLYMOUTH / RIYADH / RUWI / SALISBURY / SINGAPORE**





Photography / John Ashton, Len Dance
Typesetting / Focus Photoset Ltd.
Print / Sunderland Print Limited, England
Photoset in / "American Typewriter" / printed on / Iconorex Art 160 gm²

Designed, produced and published by:
Drake & Scull Engineering Ltd.
Marketing Services Department
Hamlyn House, Highgate Hill, London N19 5PS Tel 01-272 0233 Telex 27265

Above / Barbican Arts and Conference Centre, London / Photo shows a lagger installing the aluminium finish to the internal lagging of the concert hall concrete beams, used as air ducts.