



Dallas Union Station, 1936.

# **HISTORIC ARCHITECTURE**

## **RAILWAY STATIONS OF THE UNITED STATES AND CANADA**

**BRIAN ROBERTS**



Phoenix Union Station, c.1926.

# CONTENTS

## **RAILWAY STATIONS OF USA & CANADA**

By location in order

Albuquerque, Atlanta, Atlantic City, Baltimore, Birmingham,  
Charleston, Charlotte, Chicago, Denver, Detroit, Houston,  
Indianapolis, Louisville, Los Angeles, Memphis, Milwaukee,  
Montreal, Nashville, Newark, New Orleans, New York,  
Philadelphia, Pittsburgh, Portland, San Antonio, San Diego,  
St. Louis, Worcester, Toronto, Vancouver, Washington,  
Worcester, Albuquerque

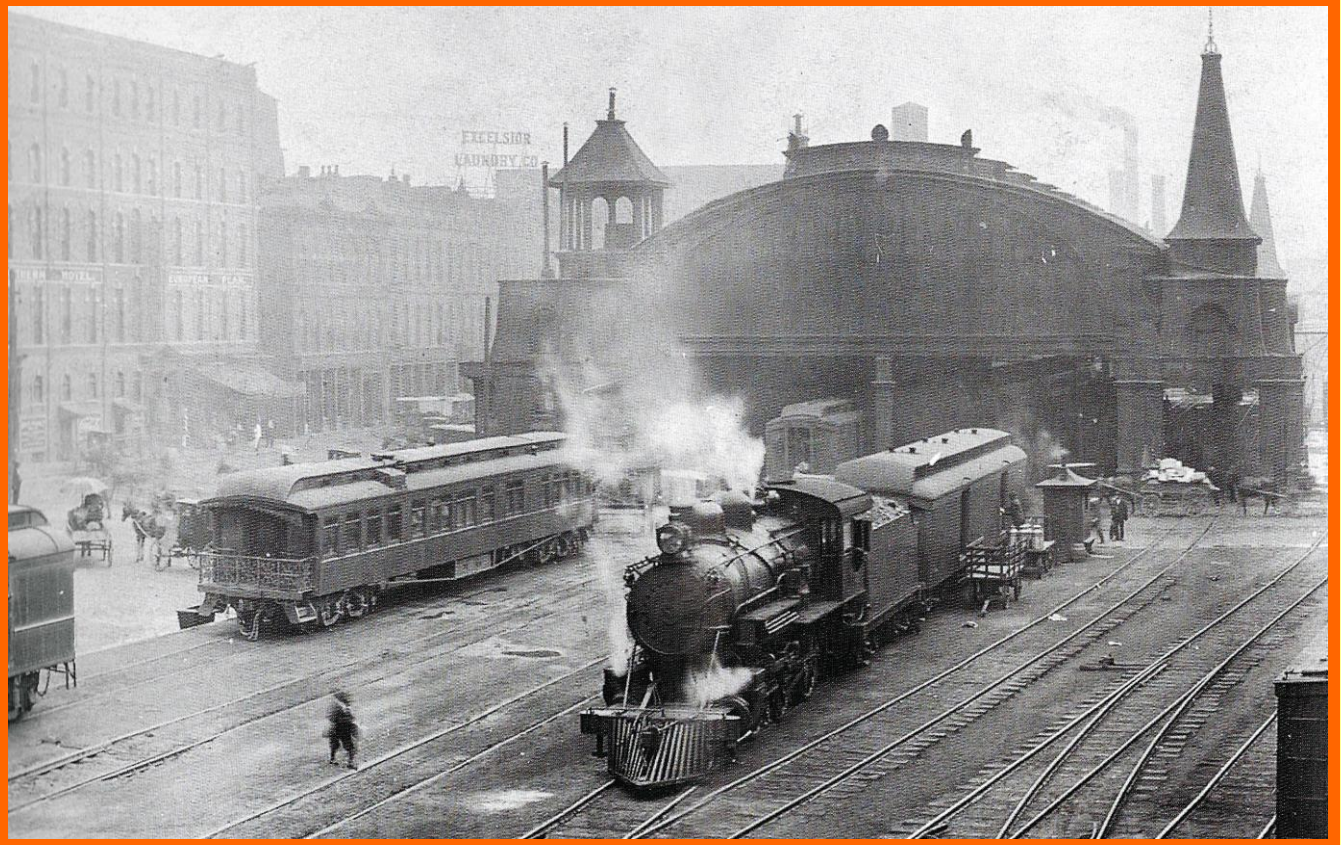
## ALBUQUERQUE STATION & HOTEL c.1912



## ATLANTA TERMINAL STATION c.1912



## ATLANTA UNION STATION DEPOT 1914



## ATLANTIC CITY READING DEPOT c.1906



## BALTIMORE CALVERT STATION c.1894



## BALTIMORE CAMDEN c.1912



# BALTIMORE MOUNT ROYAL B&O c.1910



# BALTIMORE UNION STATION c.1915



# **BIRMINGHAM ALABAMA c.1898 LOUISVILLE AND NASHVILLE STATION**



# **BOSTON SOUTH STATION 1900**



# CHARLESTON UNION STATION c.1915



# CHARLOTTE, SC- SOUTHERN STATION 1902





# CHICAGO & NORTH WEST TERMINAL 1911



# CHICAGO UNION STATION c.1925



# CHICAGO DEARBORN STREET c.1915



## DENVER UNION STATION c.1908



## DETROIT- MICHIGAN CENTRAL c.1920



## HOUSTON GRAND CENTRAL 1915



## HOUSTON UNION STATION c.1940



# INDIANAPOLIS UNION STATION c.1900



c. 1900

# LOUISVILLE UNION STATION 1906



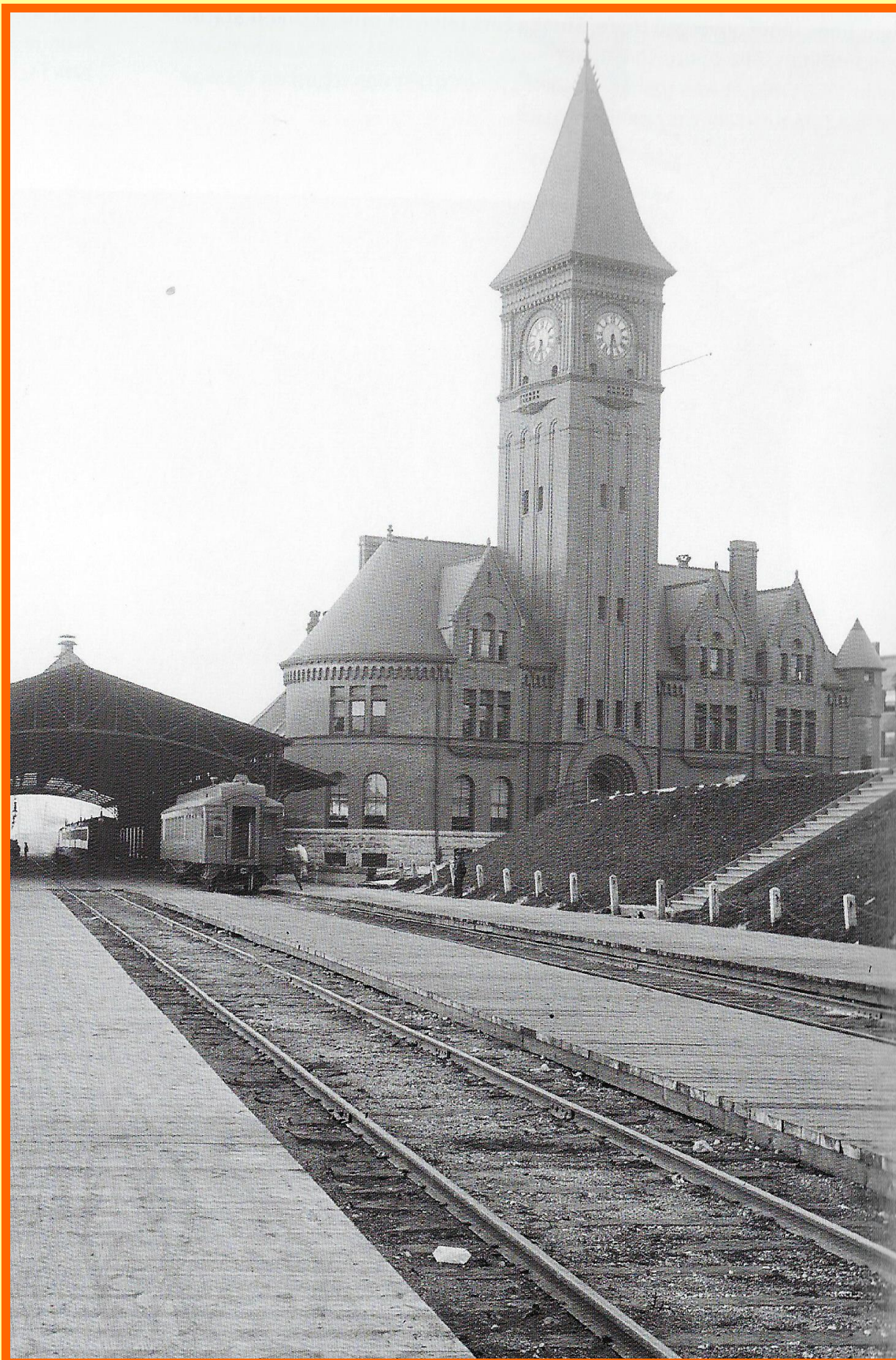
# LOS ANGELES UNION STATION c.1965



# MEMPHIS- ILLINOIS CENTRAL 1894



# MILWAUKEE- CHICAGO & NW DEPOT 1899





## **MONTREAL- WINDSOR STATION c.1895**



## **MONTREAL- PLACE VIGOR HOTEL c.1895**



# NASHVILLE UNION STATION c.1901



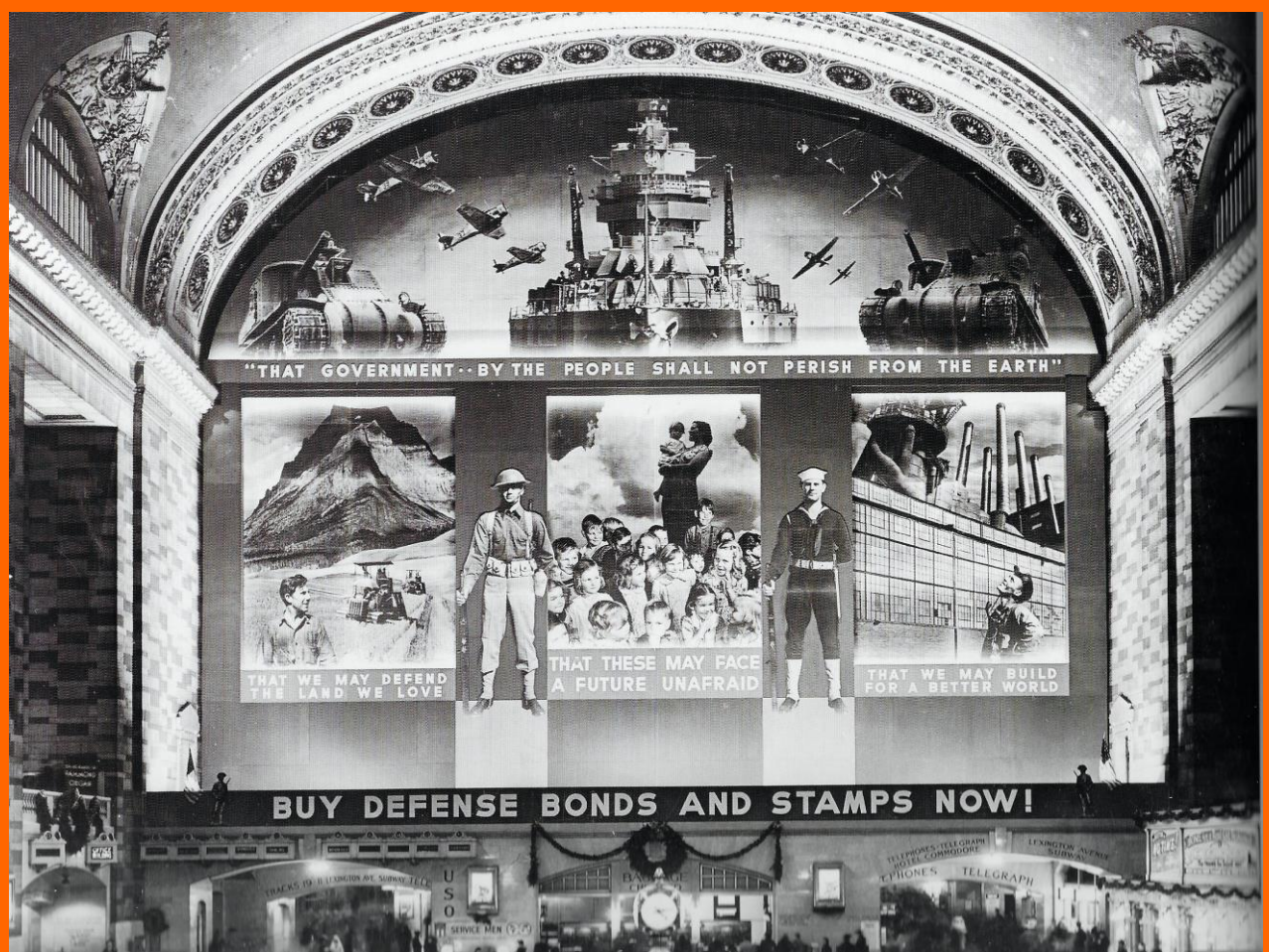
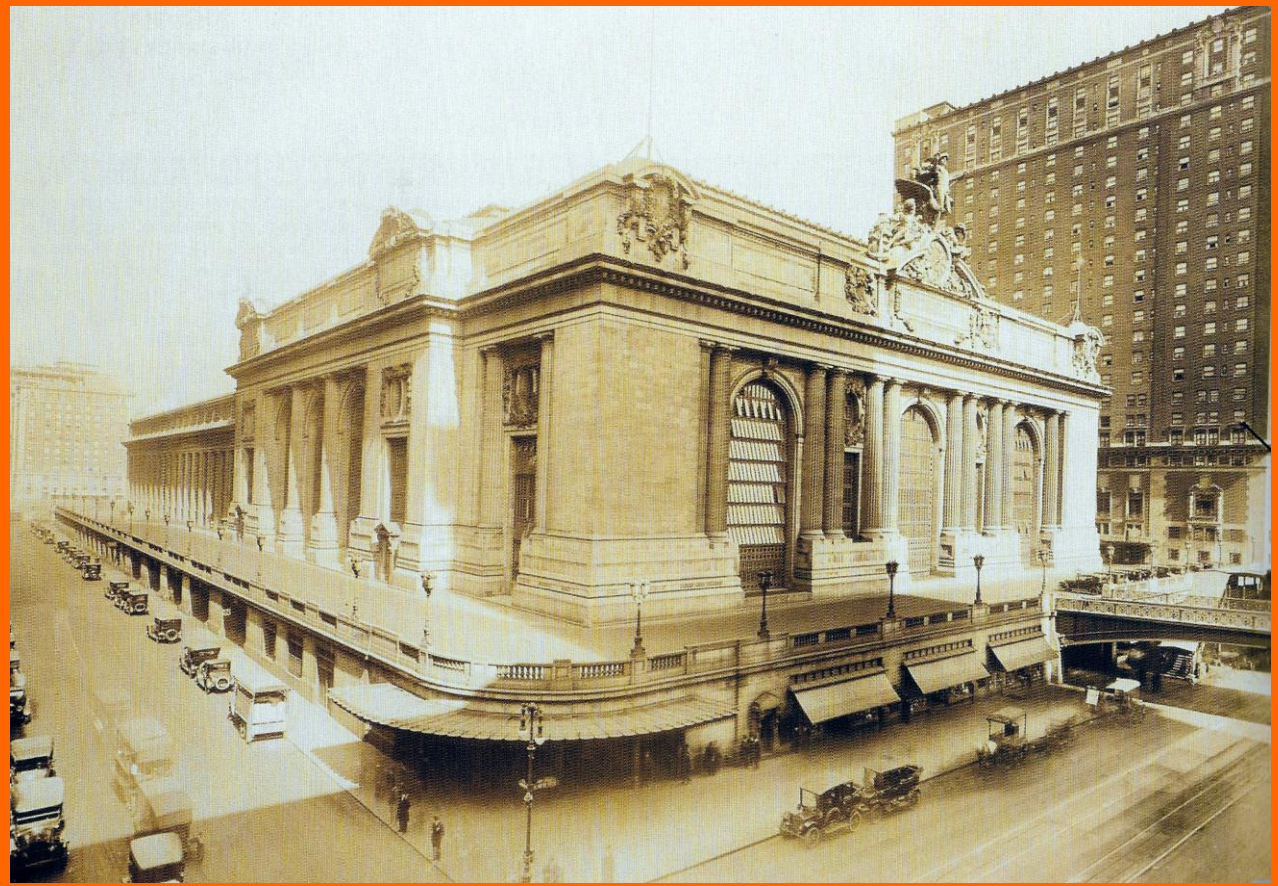
# NEWARK PENNSYLVANIA STATION 1935



# NEW ORLEANS SOUTHERN STATION 1910



# NEW YORK GRAND CENTRAL c.1920 & 1941



# NEW YORK GRAND CENTRAL



# NEW YORK PENN STATION c.1915



## PHILADELPHIA BROAD STREET c.1905



## PHILADELPHIA READING TERMINAL c.1912



**PITTSBURGH: WABASH-PITTSBURGH c.1905**



# PORTLAND, ME- UNION STATION c.1904





## SAN ANTONIO, INT & GN DEPOT c.1908



## SAN DIEGO, SANTA FE DEPOT 1915



# ST. LOUIS UNION STATION 1947



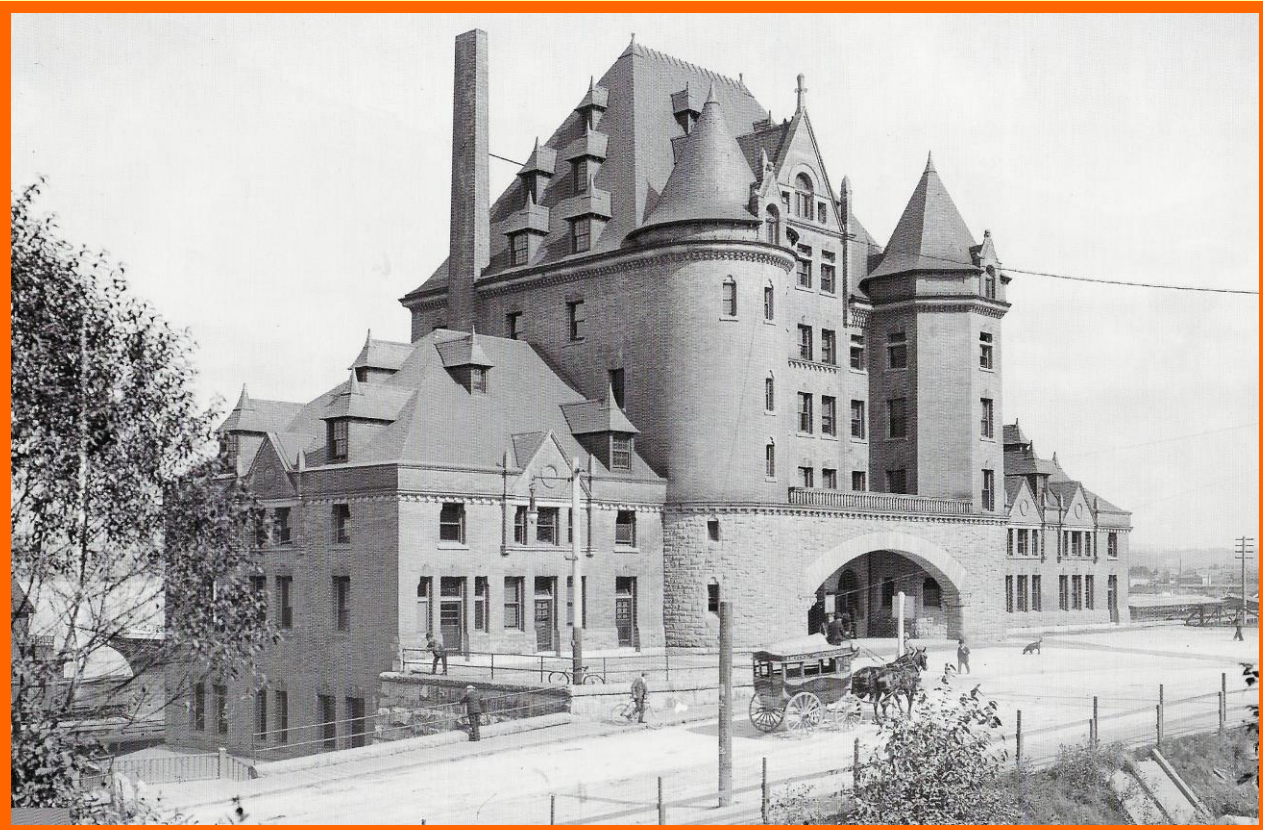
# ST. LOUIS UNION STATION



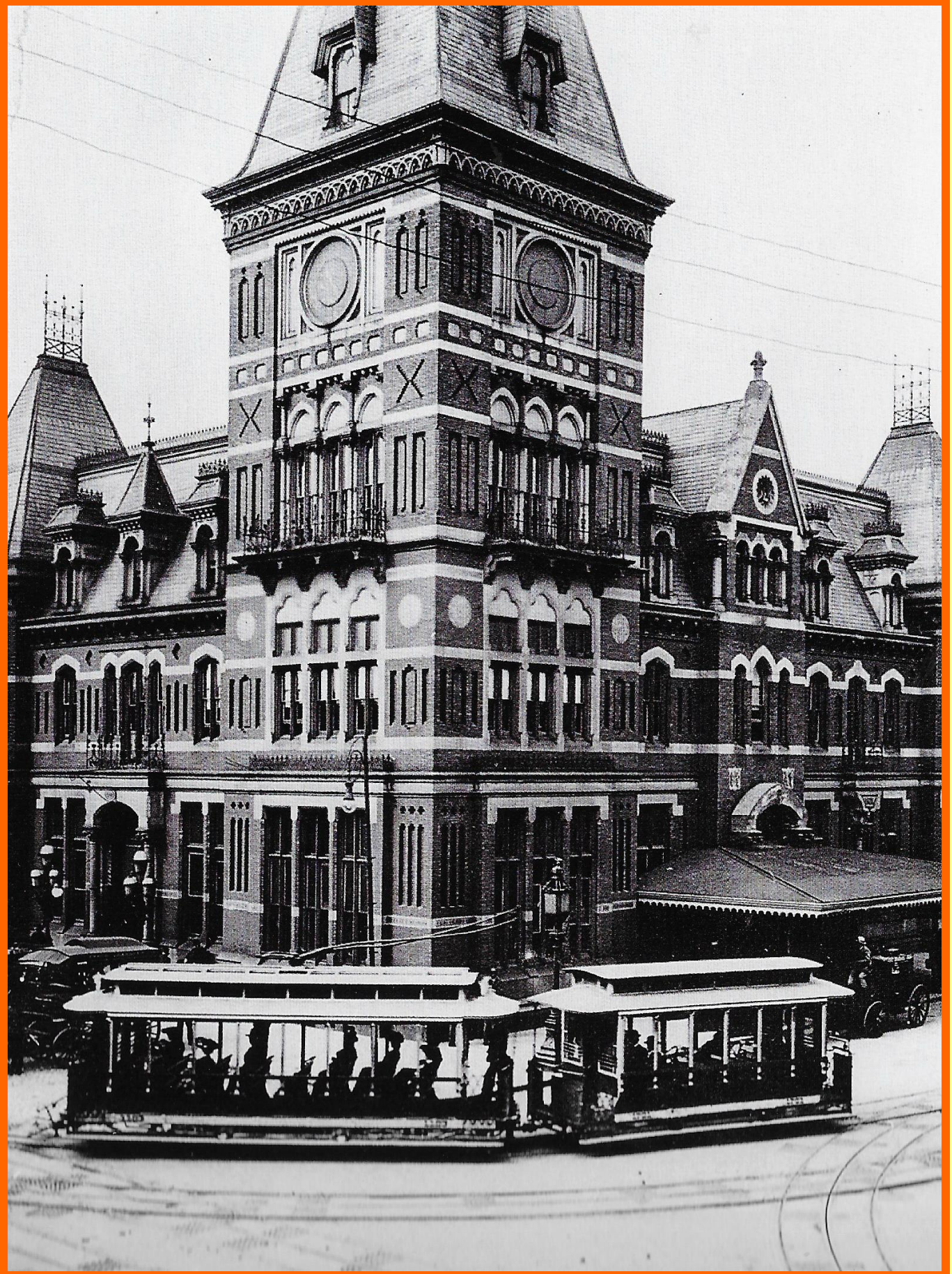
## **TORONTO UNION STATION c.1927**



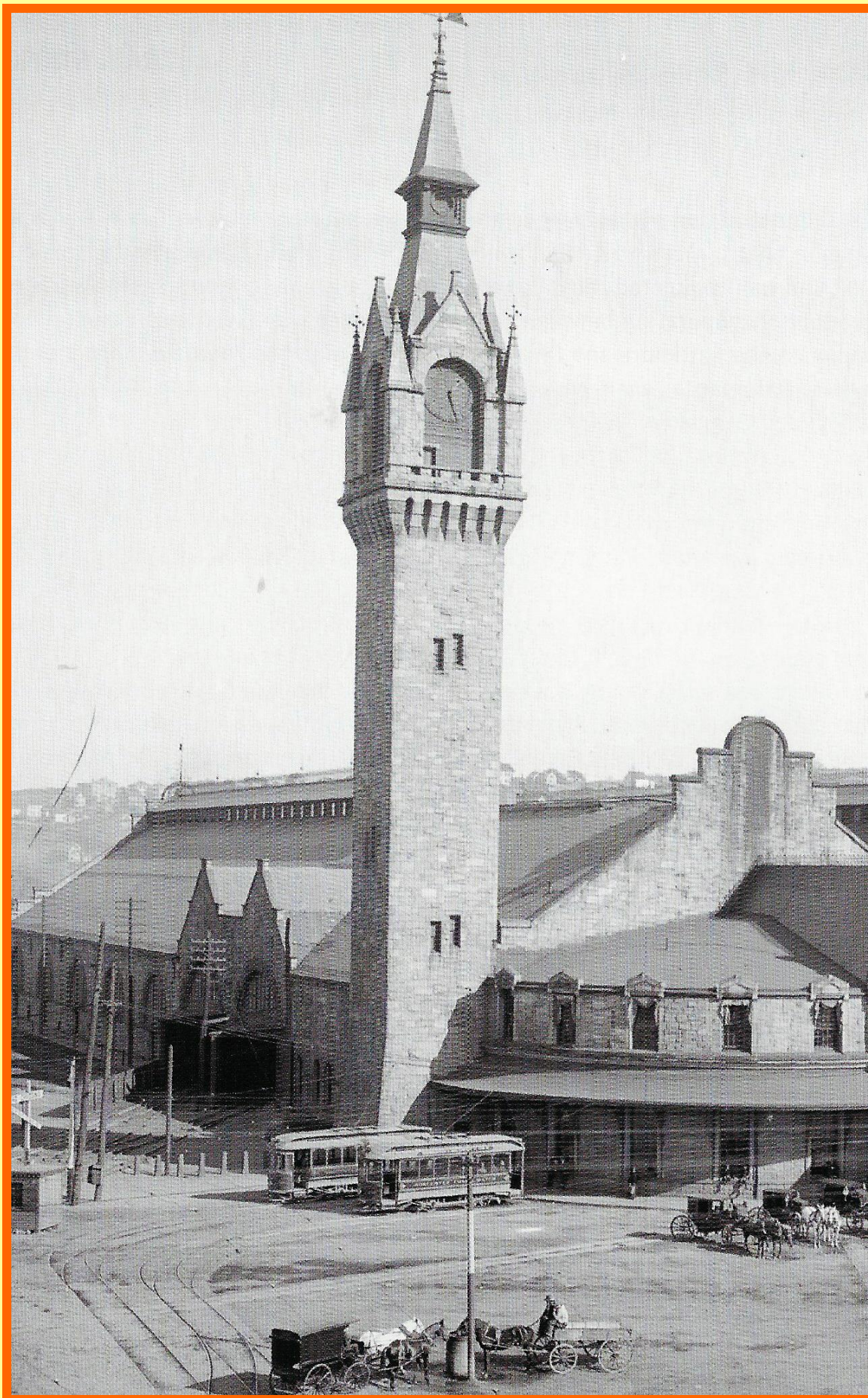
## **VANCOUVER CANADIAN PACIFIC c.1902**



# WASHINGTON, BALTIMORE-POTOMAC 1900



# WORCESTER, MA- UNION STATION c.1906





*New Mexico Rail Runner Express, started in 2006 at Albuquerque Station.*

# **RAILWAY STATIONS OF THE UNITED STATES AND CANADA**

## **REFERENCES**

1990 *Railways: The Pioneer Years*, Malcolm Fletcher & John Taylor, Studio Editions, London.  
2017 *Train Stations: Then and Now (USA)*, Ken Fitzgerald (Ed), Pavilion Books, London.

## **FURTHER READING**

1978 *London's Historic Railway Stations*, John Betjeman & John Gay.  
1982 *Brunel's Bristol*, R.A. Buchanan & M. Williams, Redcliff Press Ltd. Bristol.  
1990 *British Railway Hotels 1838-1983*, Oliver Carter, Silver Link.  
1991 *Liverpool Street (Station)*, Nick Derbyshire, Granta.  
2013 *Paddington Station, Its History and Architecture*, Steven Brindle, English Heritage.  
2017 *Britain's 100 Best Railway Stations*, Simon Jenkins, Viking-Penguin Random House, UK.