



The Ford Motor Company River Rouge Complex, Dearborn Michigan built 1917-28.

UNITED STATES HISTORIC INDUSTRIES and UTILITIES

1887-1978

BRIAN ROBERTS



The Baltimore Bromo-Selzer (Headache Powder) factory and offices were built in 1911. The tallest building in Baltimore when built: the tower 325 ft high including an illuminated, 51 ft tall revolving 20 ft diameter Bromo bottle, removed in 1936. The factory was demolished in 1969. The tower was saved and still stands.



The Procter & Gamble Ivorydale, Cincinnati factory complex built 1886, photo 1927.

The United States is renowned for its large scale engineering manufacturing industries which include aircraft, automobiles, tools and ship building, but other large factories once produced beer, bread, detergents and soaps, headache powders, pianos, radios and shoes.

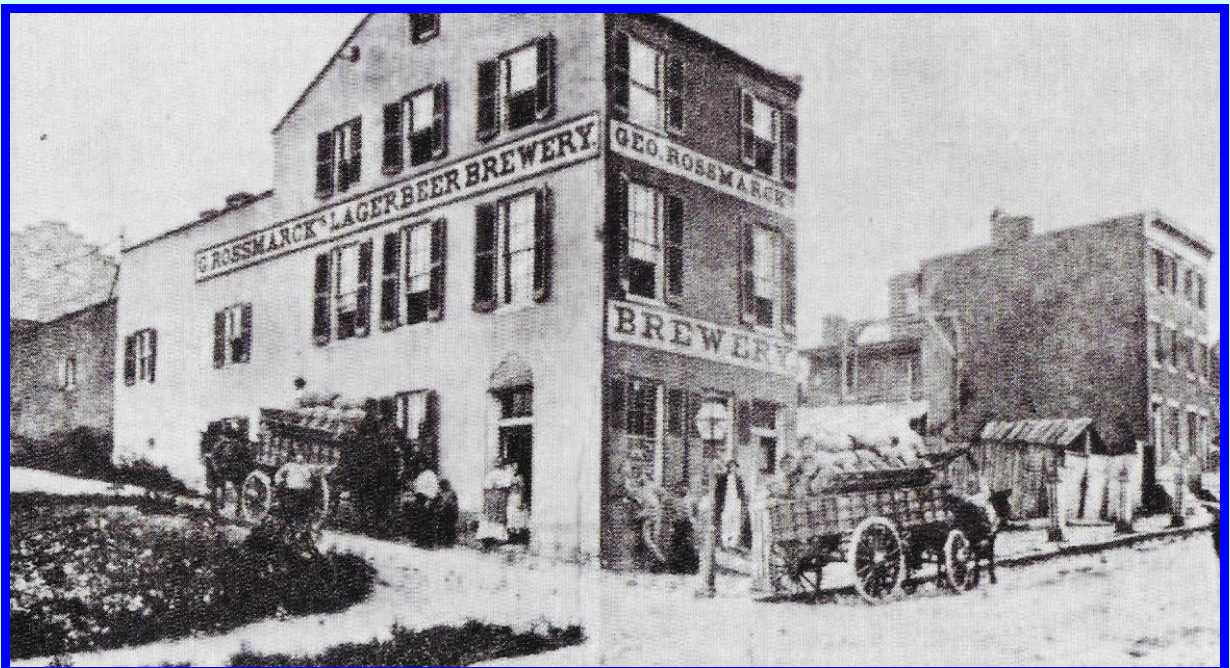
UNITED STATES INDUSTRIES AND UTILITIES CITIES, COMPANIES/BUILDINGS/INDUSTRY AND ARCHITECT WHERE KNOWN

BALTIMORE: American Brewery.
 BALTIMORE: Rossmarck Brewery.
 BALTIMORE: Bromo-Seltzer (Headache Powder) Factory, Joseph Evans Sperry.
 BALTIMORE: Bethlehem Fairfield Shipyards.
 CHICAGO: Union Stockyards, Burnham & Root.
 CHICAGO: Central Manufacturing District.
 CINCINNATI: Procter & Gamble (Soap and detergents).
 CINCINNATI: Baldwin Piano Company: Lockwood, Greene & Co.
 CINCINNATI: Crosley Building (Radios): Samuel Hannaford.
 DEARBORN: Ford Motor Company (Automobiles): Albert Kahn. Ford now make about 4 million cars a year.
 DETROIT: Packard Plant (Automobiles), Albert Kahn.
 DETROIT: Wagner Baking Factory (Bread), Walter W. Ahlschlager.
 DETROIT: General Motors Building (Automobiles): Albert Kahn. GM now make about 5 million cars a year.
 DETROIT: Ford Motor Company at Highland Park: Credited to Albert Kahn.
 HOUSTON: Hughes Tool Company (Oil Drilling for Oilfields).
 PHILADELPHIA: U.S Mint (Coins). 3rd Mint Wm Martin Ailren: 4th Mint Vincent G. Kling.
 PHILADELPHIA: Water Works (Public Utility), Benjamin Latrobe: Machinery & system- Frederick Graff.
 PITTSBURGH: Eliza Furnaces and Hazelwood Coke Plant.
 LOS ANGELES: Helms Bakery (Bread and pastries).
 LOS ANGELES: Douglas Aircraft and Northrup Aircraft (Heavy Bombers).
 SEATTLE: Boeing (now at Everett, Washington just south of Seattle: Architect Scott Francis).
 (Heavy Bombers and later Jet Airliners). Boeing has produced 1566 Jumbo Jet Airliners.
 ST. LOUIS: Peters (Shoes).
 ST. LOUIS: Anheuser-Busch (Brewer).
 ST. LOUIS: Kemp (Brewer).

BALTIMORE BREWING

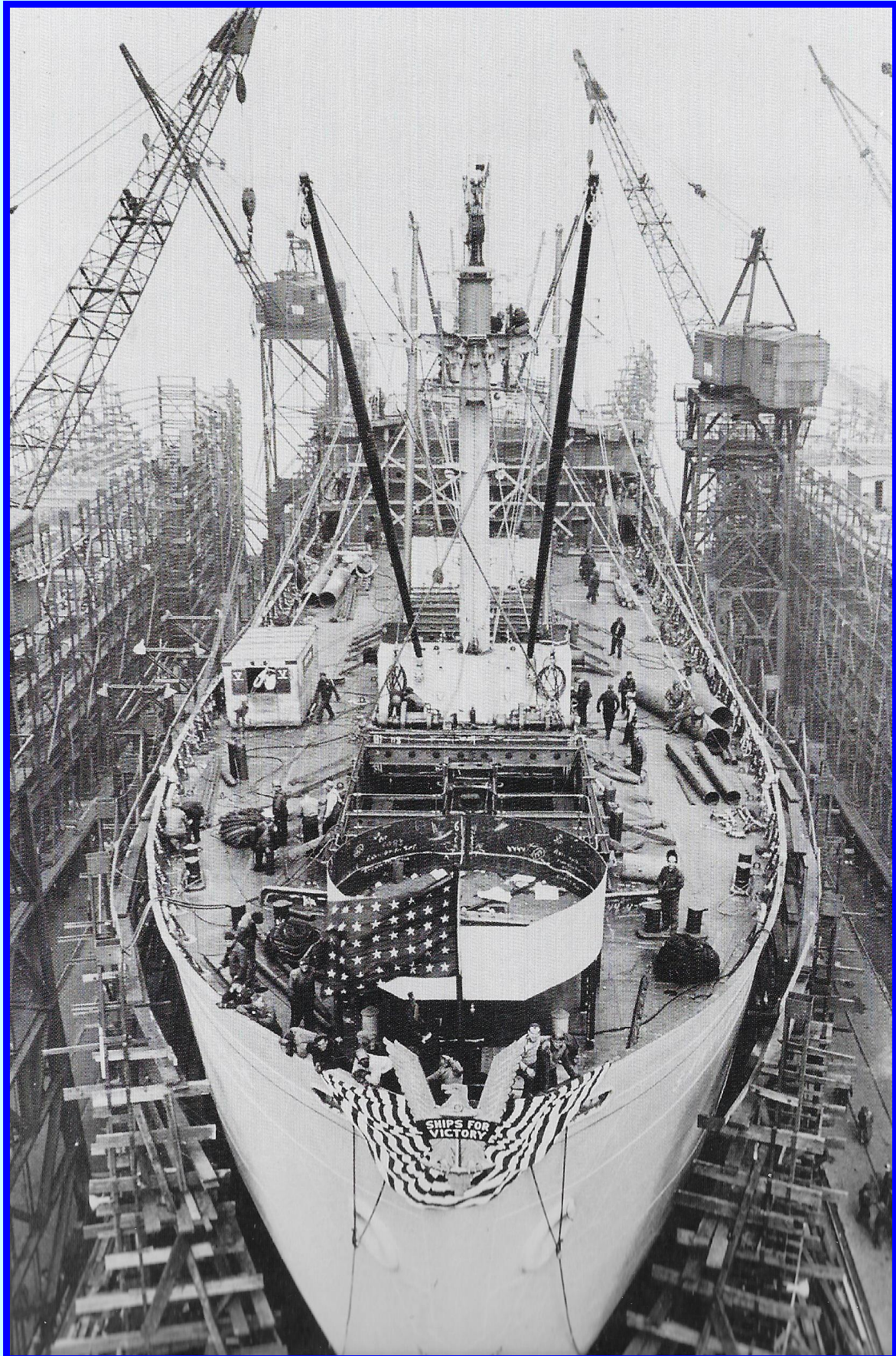


The American Brewery of John F. Wiessner & Sons, built in 1887, active until 1973, though all breweries were shut down during Prohibition which began in 1920.



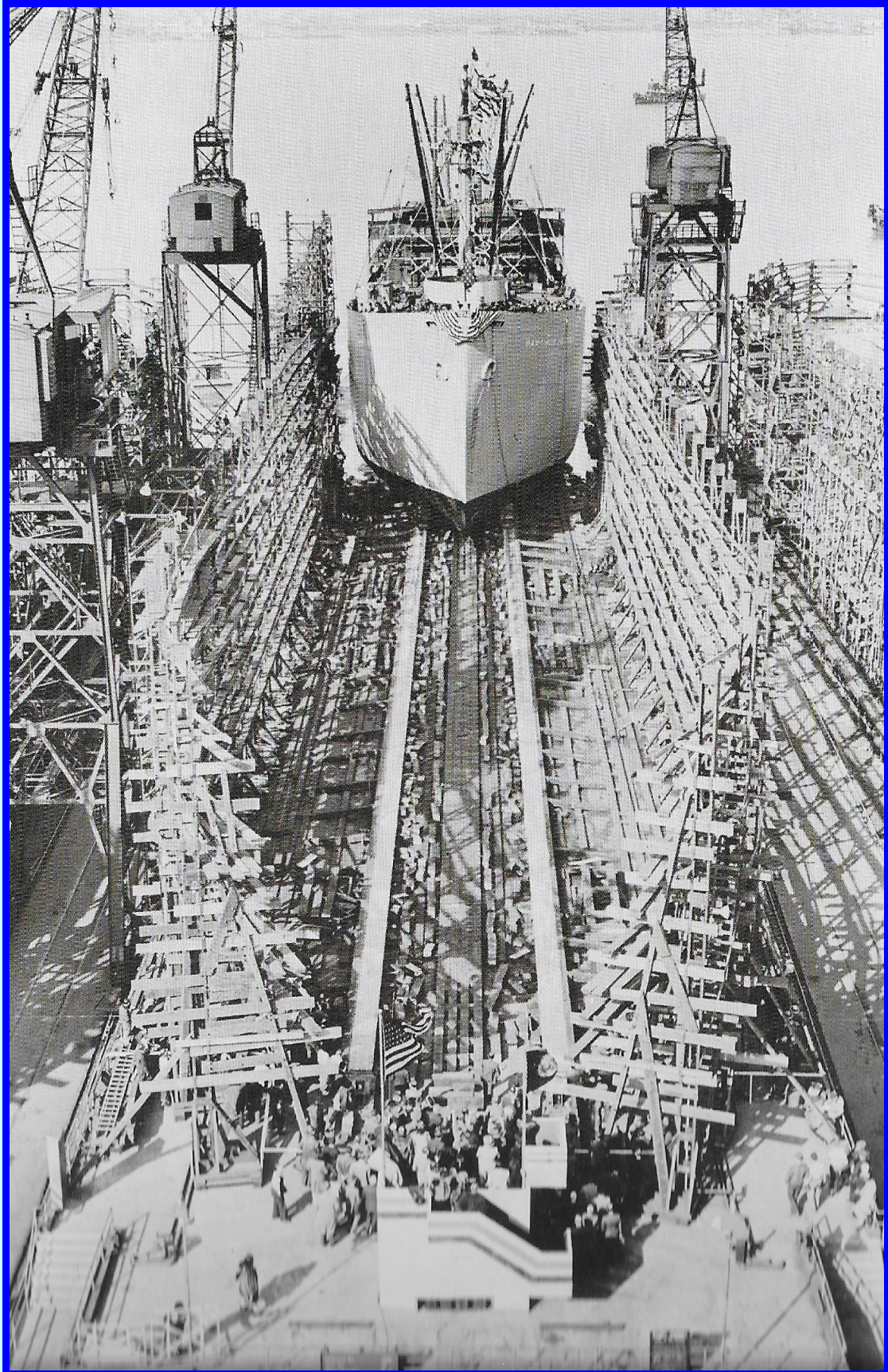
The Geo. Rossmarck Lager Beer Brewery was located in a converted townhouse.

BALTIMORE SHIPBUILDING



Building a "Liberty" cargo ship in 1943 at the Bethlehem Fairfield shipyards.

BALTIMORE SHIPBUILDING



Another view. The launching of the 3200 ton "Liberty" ship. The shipyard closed in 1984.

CHICAGO MEATPACKING AND U.S. ARMY



The Union Stockyards c.1907 established 1865, for "The Meatpacking Capital of the World."



Starting in 1905, by 1915 giant Central Manufacturing District housed 200 firms. Photo is 1943.

CINCINATTI SOAP AND DETERGENTS



Proctor & Gamble factory in 1970. The City's oldest church of 1831 was torn down in 1872.



The extended P&G headquarters. Now the HQ is relocated in the 1985 P&G twin towers.

CINCINATTI PIANOS



The Grand Baldwin Building built and photographed in 1921.



Taken over by the U.S. Government in WWII for manufacture of plywood aircraft parts. Baldwin went bankrupt 1983. Acquired by Gibson Guitar 2001, in 2014 by Neyer Properties.

<10>

CINCINATTI RADIOS



Built for Crosley Radios with seven floors for radio manufacture, photo of 1930.
Eighth floor was WLW-Radio Studio which broadcast "Voice of America" during WWII.

<11>

CINCINNATI RADIOS



A 1945 venture to change to manufacture of compact cars failed. Factory closed since 1960. Partly used as warehouse, now in very poor condition with no known plans for renovation/reuse.

DEARBORN AUTOMOBILES



The Ford Motor Company Rouge Plant, Dearborn, Michigan built 1917-28.
Bottom photo 1948.

<13>

DEARBORN AUTOMOBILES



The Powerhouse at the Ford Rouge factories, photo of 1927.

DETROIT AUTOMOBILES



Packard Motor Car Company c.1910



In 1954, Packard having bought the Studebaker Company adopted their name. But two years later closed the Detroit Plant and moved to South Bend, Indiana.

DETROIT BREAD BAKING



The Wagner Baking Company in 1917. Introduced "Wonder Bread" in 1921.
Later, Continental Baking bought the Company and in 1930 introduced sliced bread.
The factory closed in 1985.



In 1999 became the Motor City Casino. Then in 2008 had the \$300 million renovation shown.

DETROIT AUTOMOBILES



General Motors Building c.1920. 15 floors- 2000 offices.
Once the second largest office building in the world.



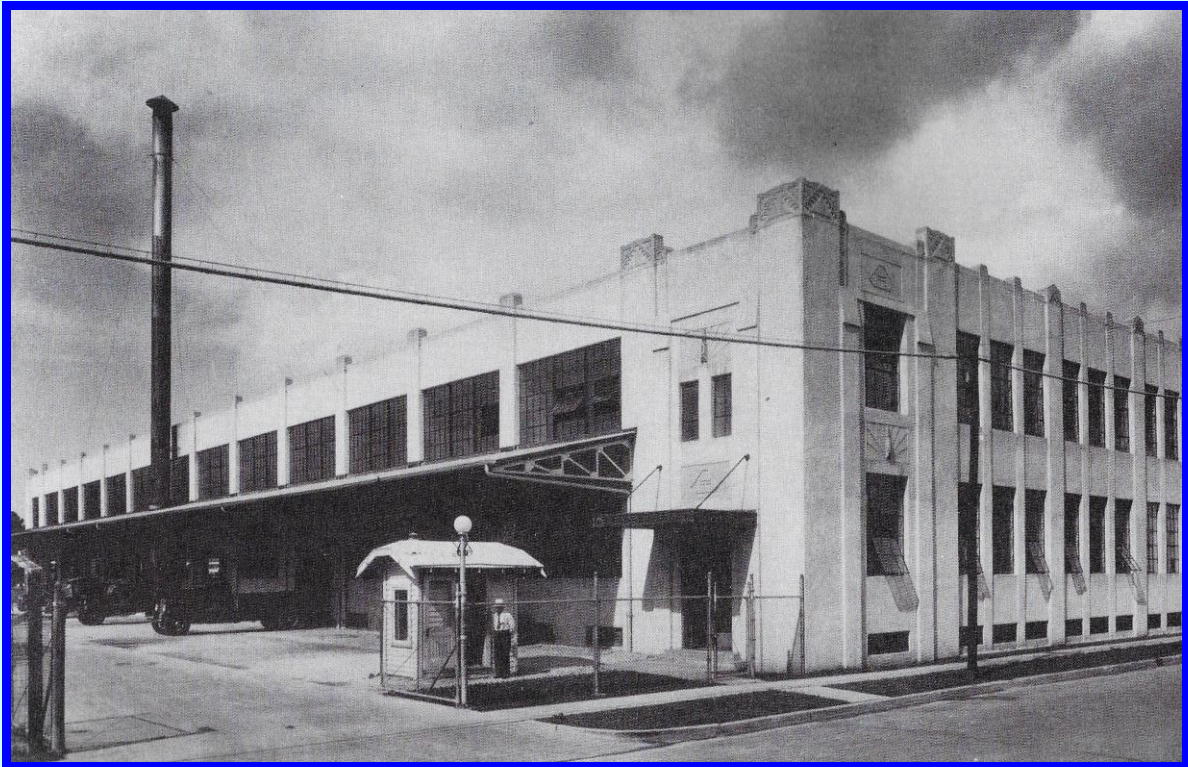
In 1996, GM moved to the Renaissance Centre in downtown Detroit.
The building, now Cadillac Place, houses 2800 State of Michigan employees.

DETROIT AUTOMOBILES



The Renaissance Centre built in 1977. Purchased and modernised by GM in 1996.

HOUSTON OIL DRILLING TOOLS & BREWING



This Hughes Tools Company building was built and photographed in 1932. Being highly profitable, it allowed the more famous Howard Hughes Jr. to indulge his passions for aircraft (including round-the-world records) and for movie making.



The Magnolia Brewery, found in 1893. Photo 1912. At its peak, the brewery could make 750 tons of ice and 600 barrels of beer per day.

<19>

LOS ANGELES BREAD AND PASTRIES

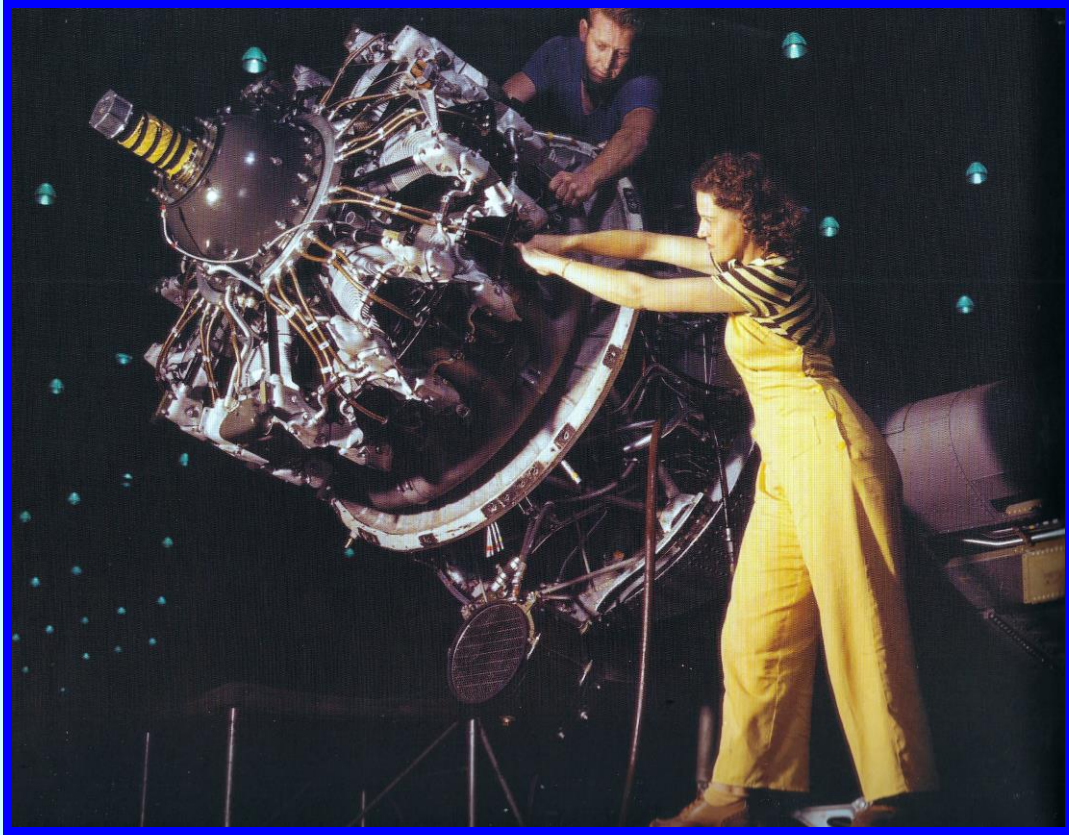


Opened in 1921, Helms bakery trucks delivered fresh bread and pastries throughout LA.

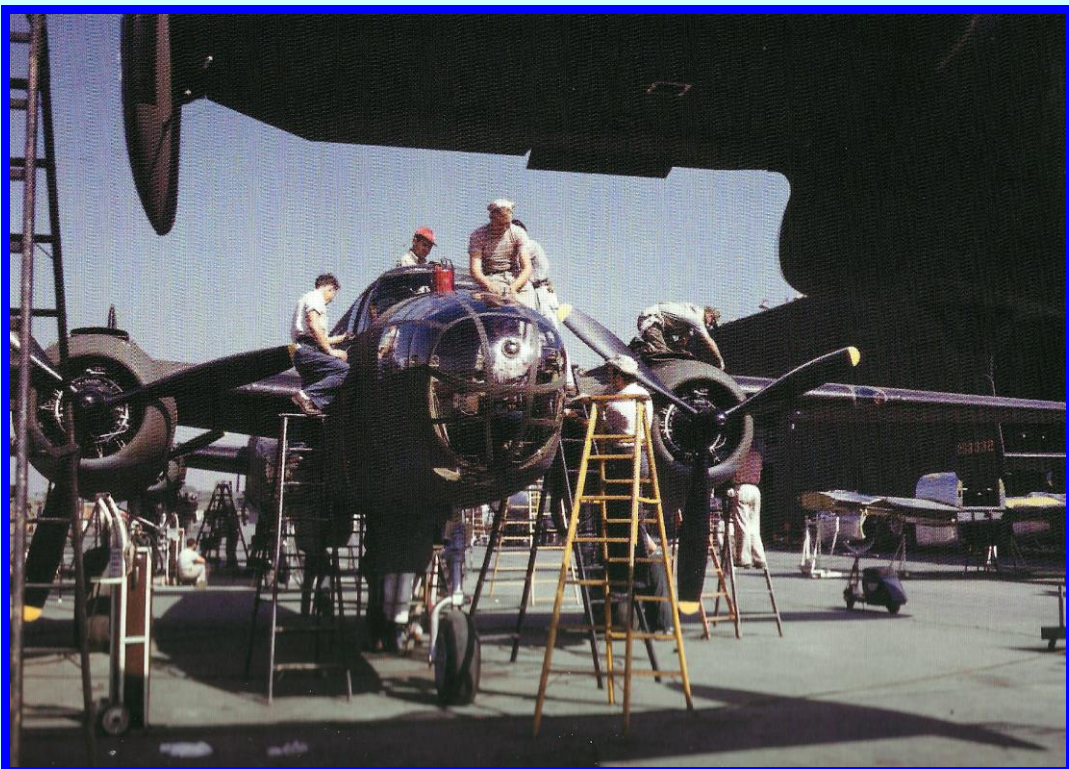


Expanding as far as San Diego, in 1969 just prior to closing Helms "furnished the first bread on the moon for the Apollo 11 landing." Now a museum, the large neon sign was restored and runs off solar panels.

LOS ANGELES AIRCRAFT



After Pearl Harbour, LA switched to the manufacture of B-25 bombers.
Photo is at Douglas Aircraft in 1942 where women worked on aircraft engines.



The North American factory made the B-25 pictured and the P-51 "Mustang" fighters.
The Los Angeles Aero Industry ceased production in 2015.

<21>

PHILADELPHIA U.S. MINT



The Third U.S. Mint opened in 1901, photo c.1915.

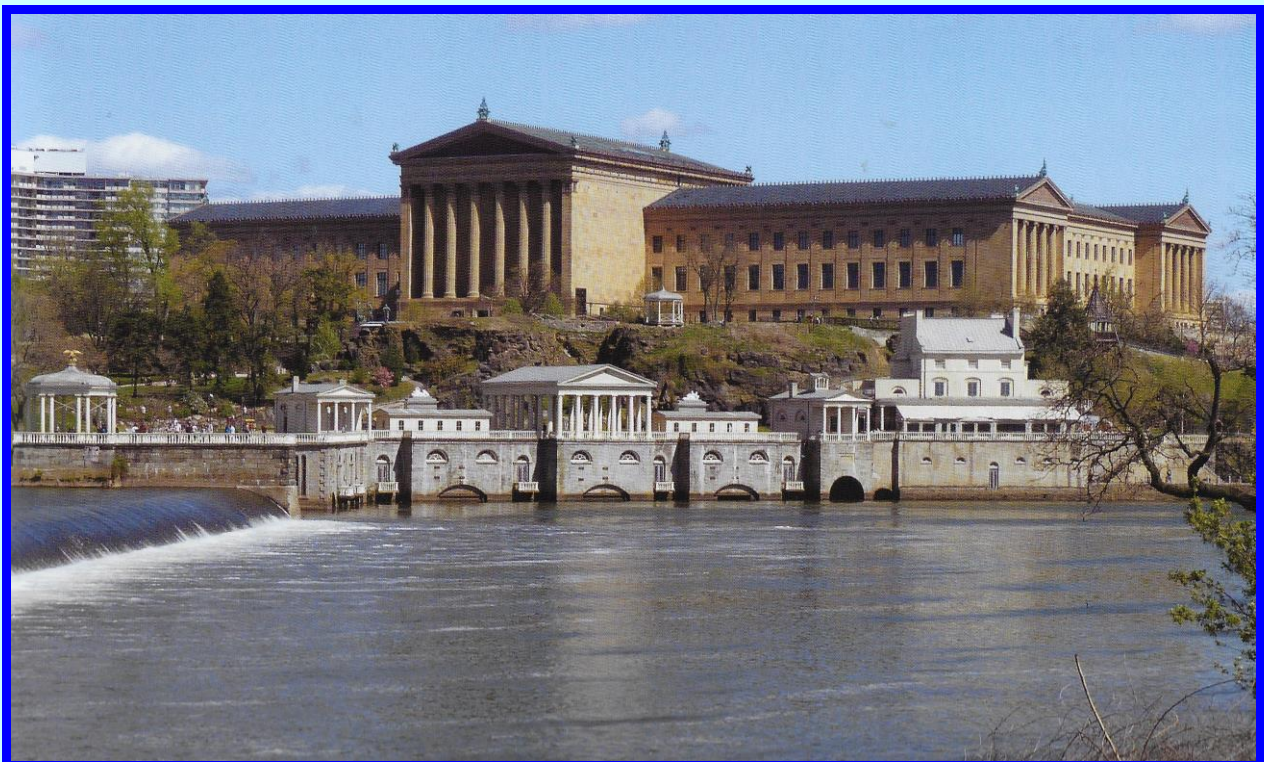


The Fourth U.S. Mint opened in 1969 and is capable of producing 32 million coins a day.

PHILADELPHIA WATER WORKS



Opened 1812, photo c.1900. Set in formal gardens with Roman temples.
A turbine system pumped 4 million gallons of water each day to an enormous reservoir on "Fair Mount" which fed water by gravity throughout Philadelphia.



In 1909, the Works was decommissioned as a pumping station. The temples have been restored and now include a riverside restaurant and educational facilities.

PITTSBURGH COKE FURNACES



Photo 1931. Bessemer furnaces handling 4300 tons steel per day.

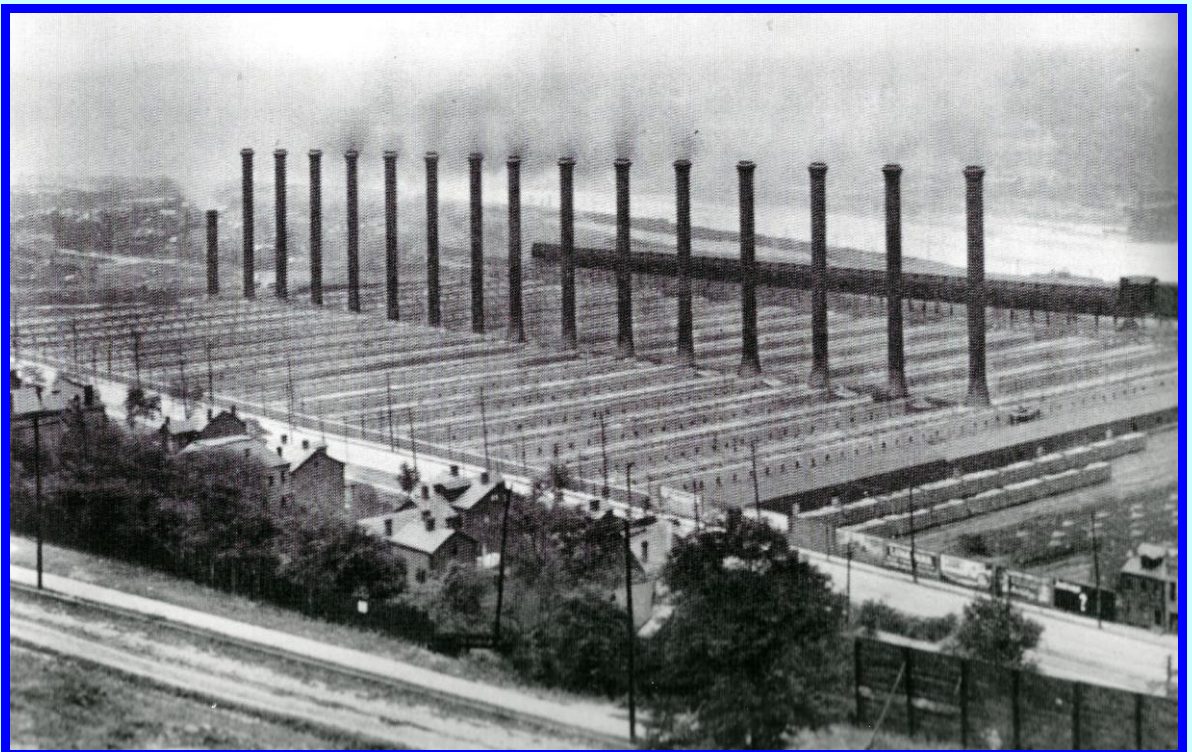


Photo c.1900 of 1200 Beehive coke-making ovens, phased out by 1926.

SAN FRANCISCO FISHERIES



Fisherman' Wharf dates from 1850s or before, photo c.1900, about the time it was rebuilt.



From the first restaurant in 1932, after WWII the Wharf became a major tourist attraction. But even now, it houses the West Coast's largest concentration of commercial fish processors and distributors.

SAN FRANCISCO CABLE CARS



Two of the powerhouses and machinery once driving the historic cable car system.

SEATTLE AIRCRAFT



During WWII, the giant roof of the Boeing Aircraft Factory was camouflaged as a housing estate.



During the war, Boeing manufactured hundreds of B-17 bombers and later B-29s.

<27>

SEATTLE AIRCRAFT

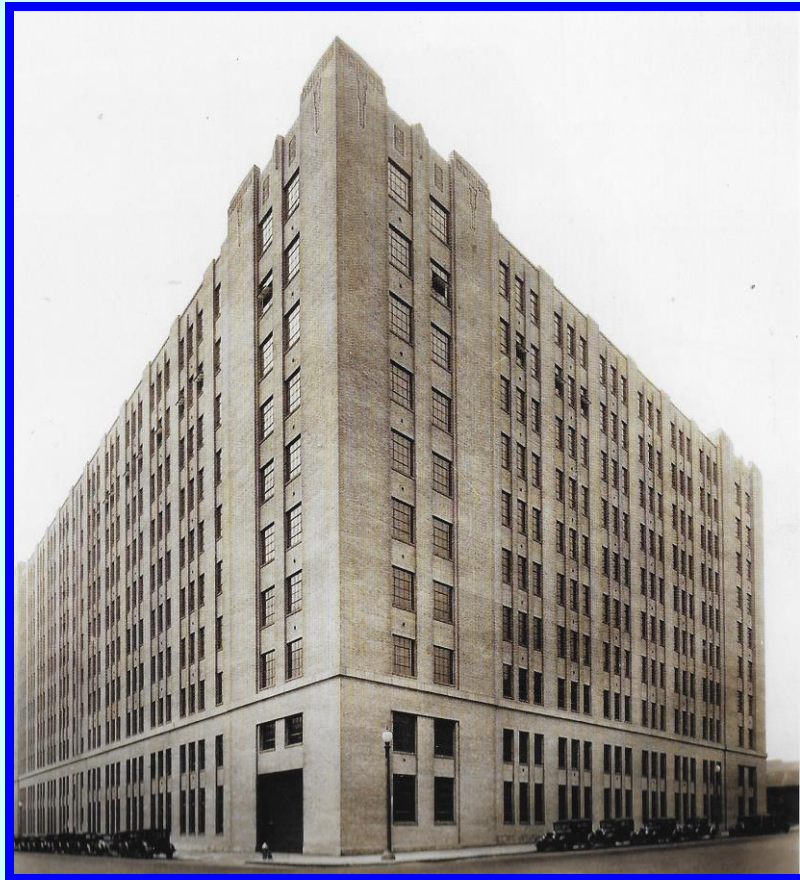


Bombers coming off the Boeing Production Line in WWII.



From the 1960s, Boeing manufactured jet passenger airliners, first the 707, next the 747 (Jumbo Jet) and then the pictured 777.

ST. LOUIS SHOES AND HARDWARE



International Shoe founded 1911, photo c.1930 of 600,000 sq ft factory annex, now a museum.
In 1929, with 18 factories and 8500 employees it produced 54 million pairs of shoes.



Cupples Station, photo c.1905, once comprised 18 similar warehouses.
Now largely replaced by highways and mix of buildings including a hotel.

ST. LOUIS BREWING



Anheuser-Busch Brewery dates from 1860, top photo c.1937. Making Budweiser since 1876.

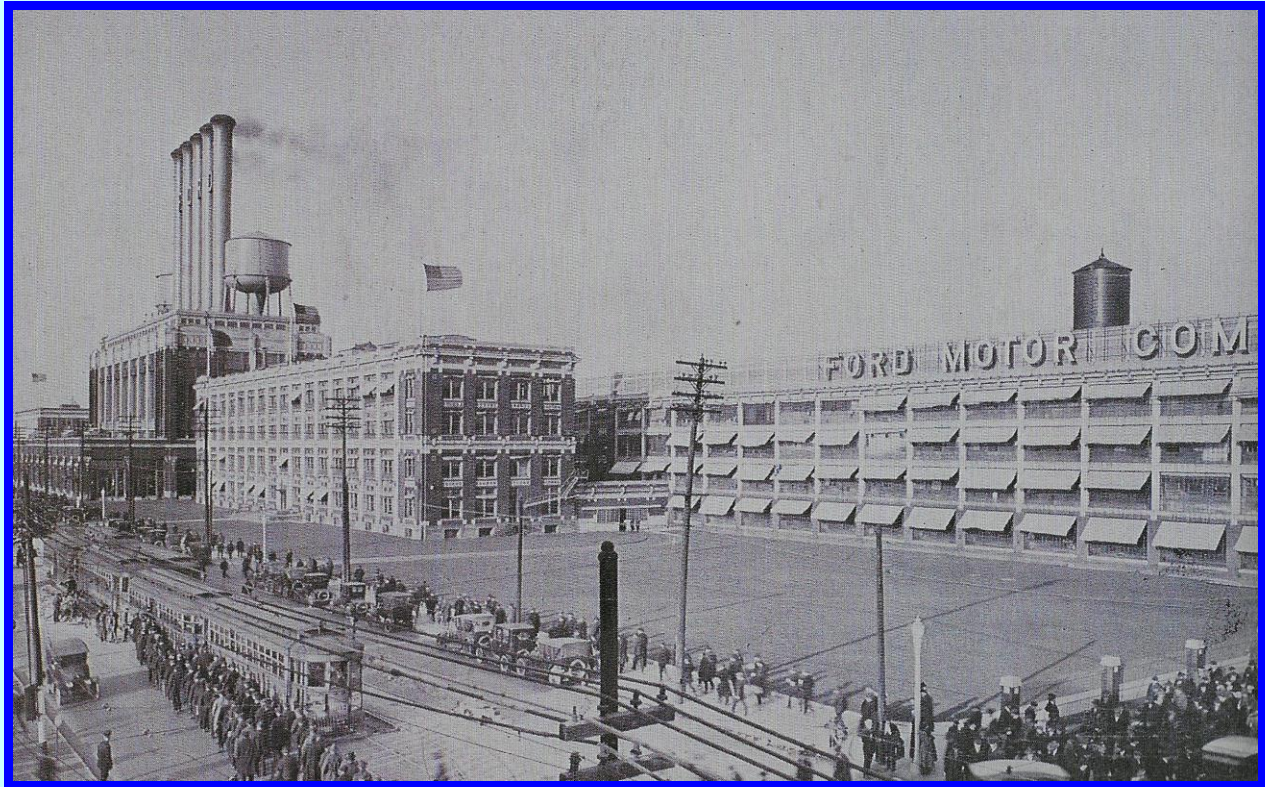
ST. LOUIS BREWING



Lemp Brewery, photo c.1895. Introduced lager in 1842, aged in natural caves below building.



Once the largest brewer in St. Louis. Ruined by Prohibition, the complex is now used for storage.



The Ford Motor Company Factory in Highland Park, Detroit. Built 1910-14, photo 1923. With a four storey, 865 ft long factory, a four-storey office block- note the window external sunshades, the roof cylindrical water tanks and left, the huge powerhouse topped by five enormous smokestacks.

REFERENCES AND FURTHER READING

- 1994 Works in Progress, Alvin Rosenbaum, Pomegranate Art Books, California.
- 1995 Form Follows Finance; Skyscrapers and Skylines in New York and Chicago, Carol Willis, Princeton Architectural Press.
- 2013 Skyscrapers: A History of the World's Most Extraordinary Buildings, Judith Dupre, Black Dog and Leventhal Publishing, New York.
- 2013 Lost Baltimore, Gregory J Alexander & Paul Kelsey Williams, Pavilion Books, London.
- 2014 Lost Los Angeles, Dennis Evanosky & Eric J. Koss, Pavilion Books, London.
- 2014 Philadelphia, Edward Mauger & Bob Skiba, Pavilion Books, London.
- 2015 Detroit, Cheri Gay, Pavilion Books, London.
- 2015 Chicago, Kathleen Maguire, Pavilion Books, London.
- 2016 Pittsburgh, Pittsburgh History & Landmarks Foundation, Pavilion Books, London.
- 2017 St. Louis, Maureen Kavanaugh & Elizabeth McNulty, Pavilion Books, London.
- 2017 Phoenix, Pavilion Books, London.
- 2017 San Francisco, Dennis Evanosky & Eric J. Koss, Pavilion Books, London.
- 2018 Cincinnati, Jeff Sues, Pavilion Books, London.
- 2018 Houston, William Dylan Powell, Pavilion Books, London.