

BRUNO FULIGNI



# PARIS IN 3D

IN THE BELLE ÉPOQUE



STEREOSCOPE

+

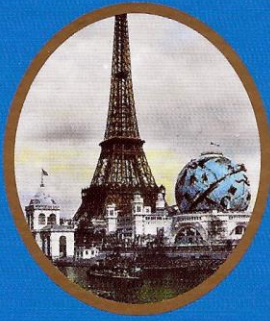


BOOK

+



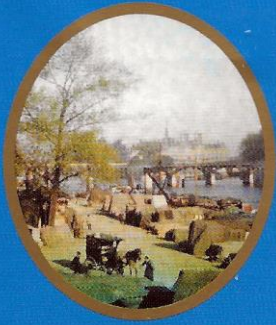
3D PHOTOS



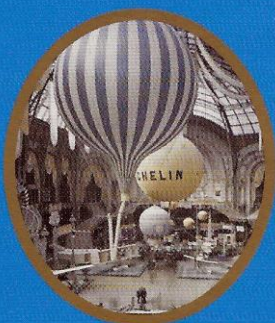
PARIS IN 3D  
IN THE BELLE ÉPOQUE



BLACK DOG  
& LEVENTHAL  
PUBLISHERS



PARIS IN 3D  
IN THE BELLE ÉPOQUE



BLACK DOG  
& LEVENTHAL  
PUBLISHERS

The peace and prosperity of the Belle Époque (1880-1914) allowed for rapid growth and innovation. Paris soon became the epicenter of culture and the arts. As Art Nouveau became popular, the flowing style was showcased in landmark buildings, haute couture, artwork, and even the stations of the newly



built Métro. The city flaunted its beauty by hosting the 1889 Exposition Universelle, for which the controversial Eiffel Tower was built; the 1900 Summer Olympics; and the 1900 Exposition Universelle, which attracted more than 50 million rich and powerful tourists to the effervescent city.

*Paris in 3D in the Belle Époque* brings this transformative era in the history of one of the world's greatest cities to life through 34 vivid 3D, stereoscopic images and a photo-packed book that capture, with stunning clarity, that vibrant and seminal era.



**BRUNO FULIGNI** is a French writer and historian. He has written more than 20 books.

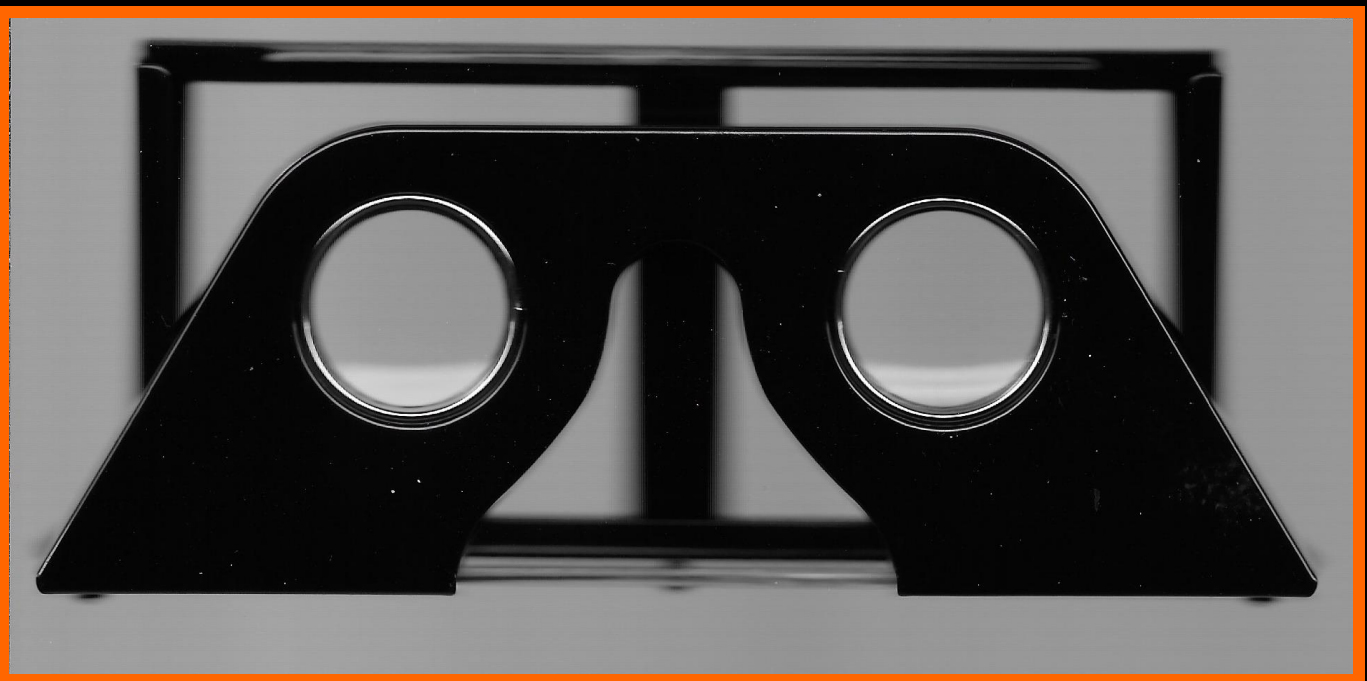
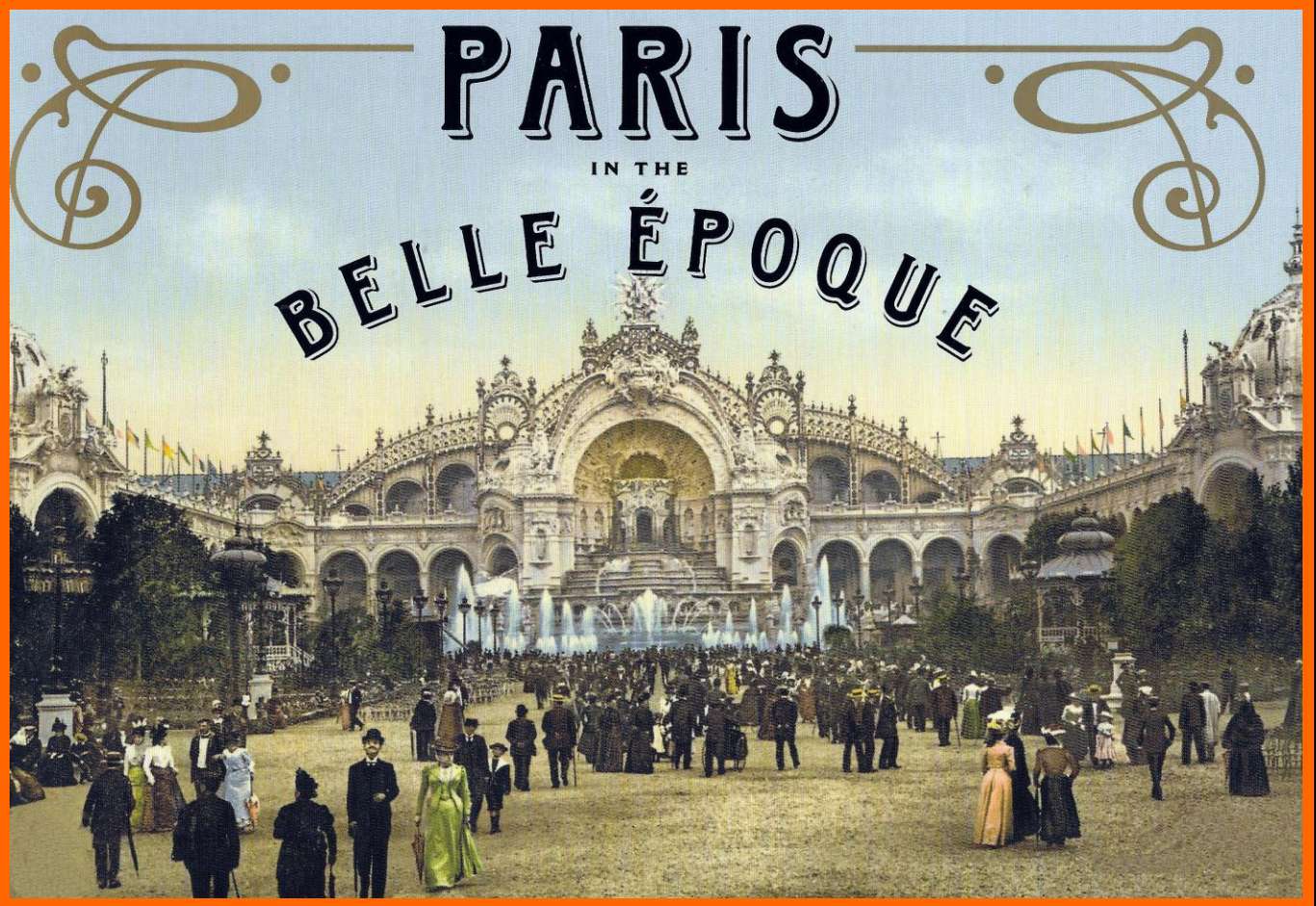


BLACK DOG  
& LEVENTHAL  
PUBLISHERS  
NEW YORK

VISIT

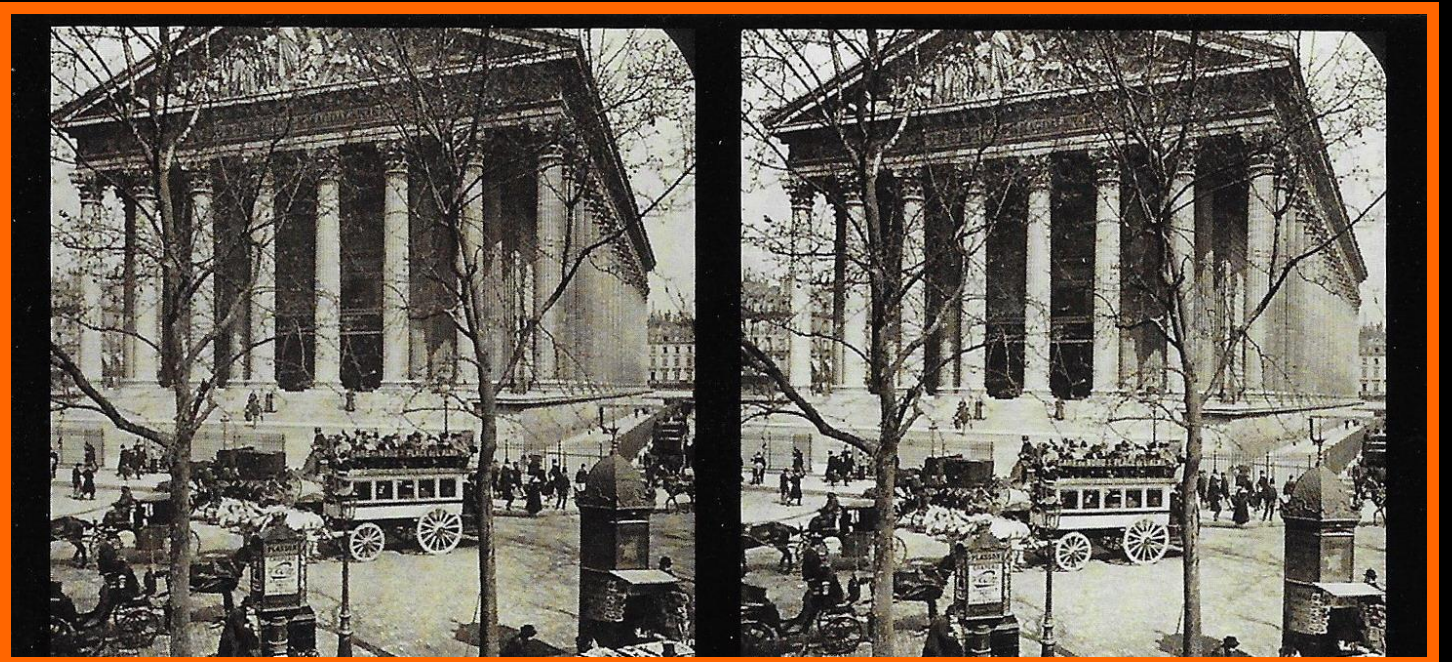
[WWW.BLACKDOGANDLEVENTHAL.COM](http://WWW.BLACKDOGANDLEVENTHAL.COM)

DESIGN BY LIZ DRIESBACH  
PRINTED IN CHINA

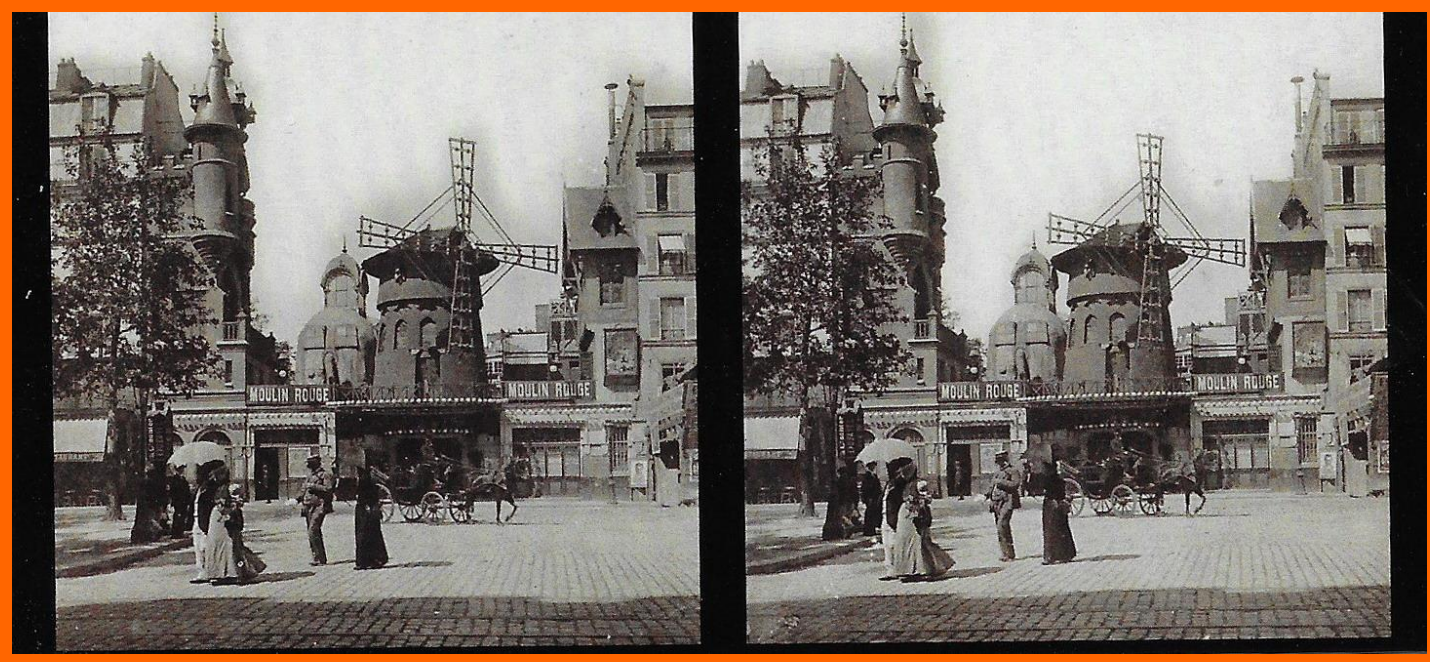




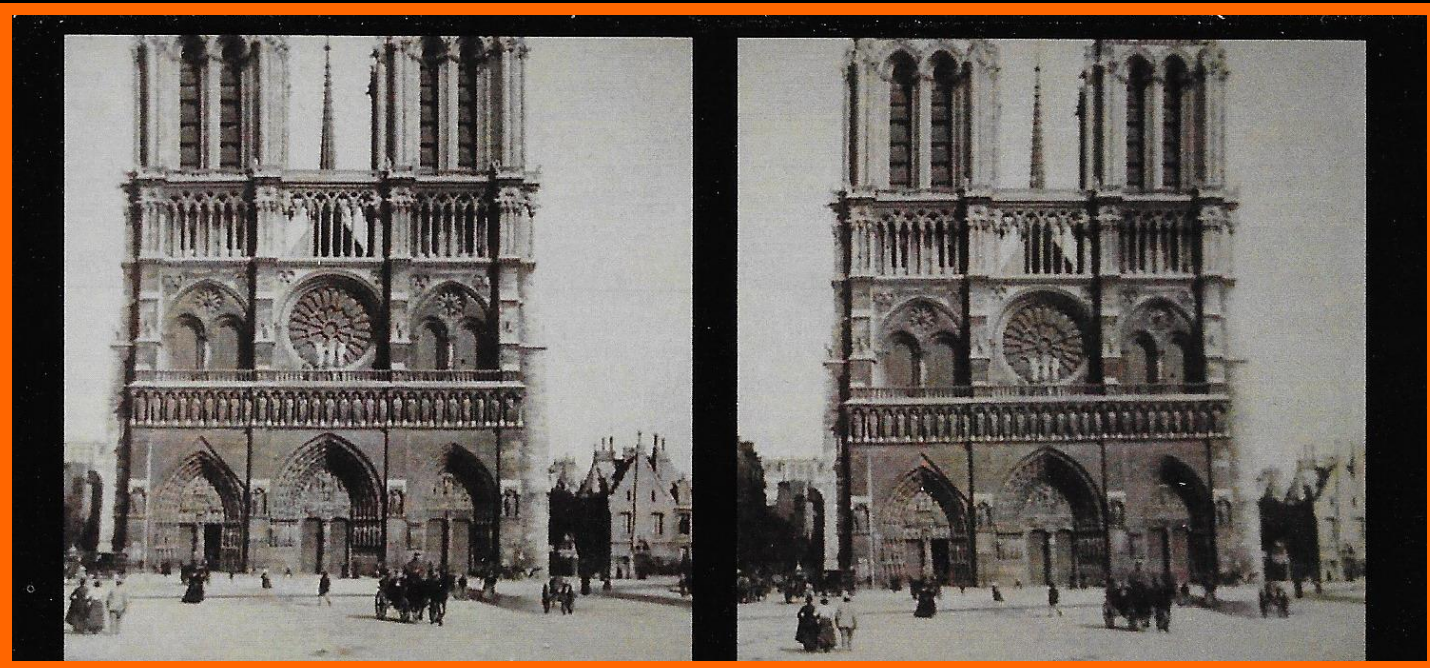
AVENUE DE L'OPERA FROM THE TOP OF AN OMNIBUS, 1910.



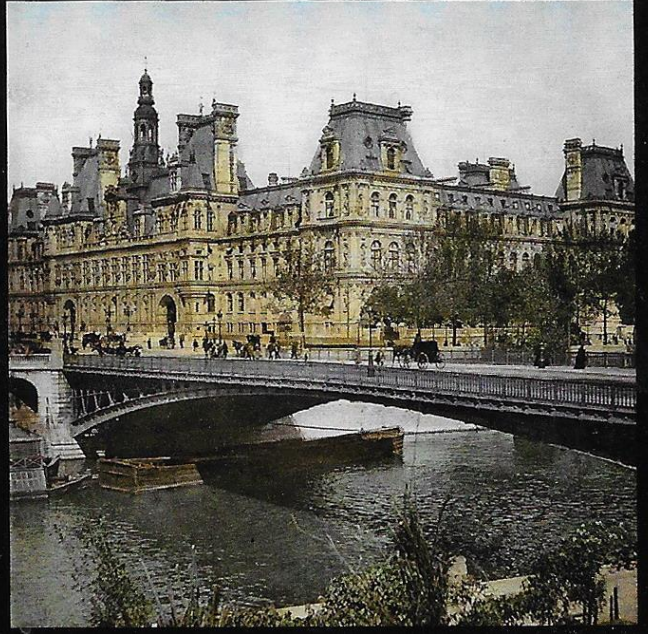
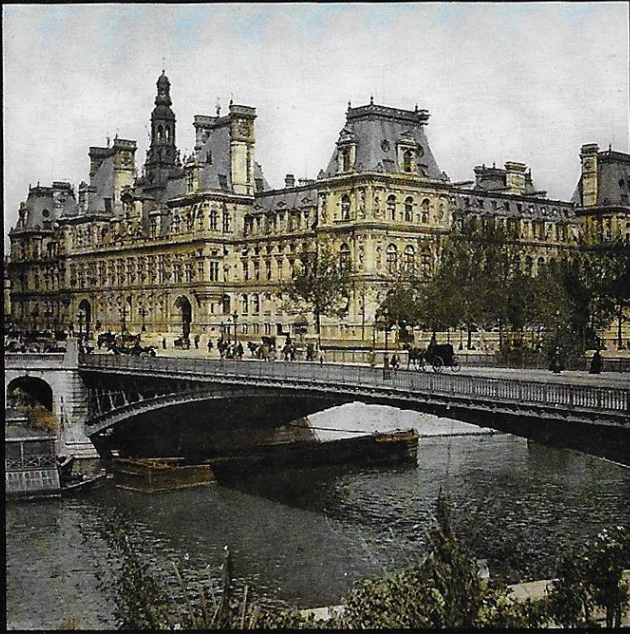
L'EGLISE DE LA MADELEINE, 1901.



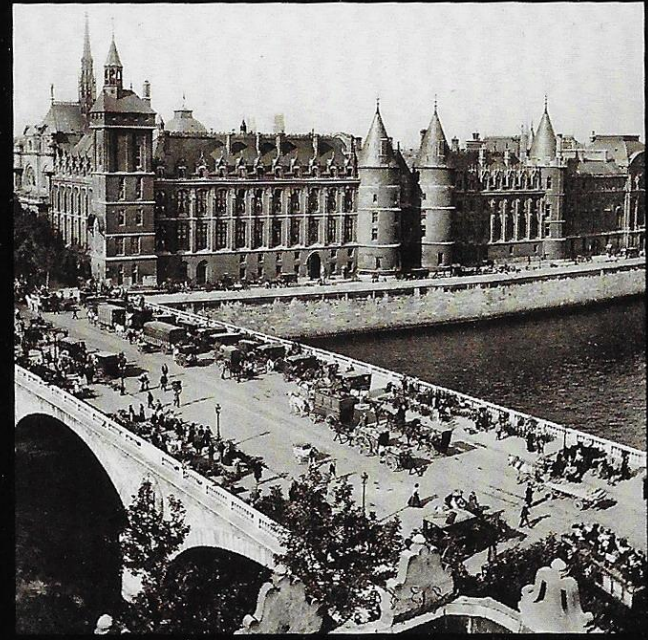
THE MOULIN ROUGE ON BOULEVARD DE CLICHY.



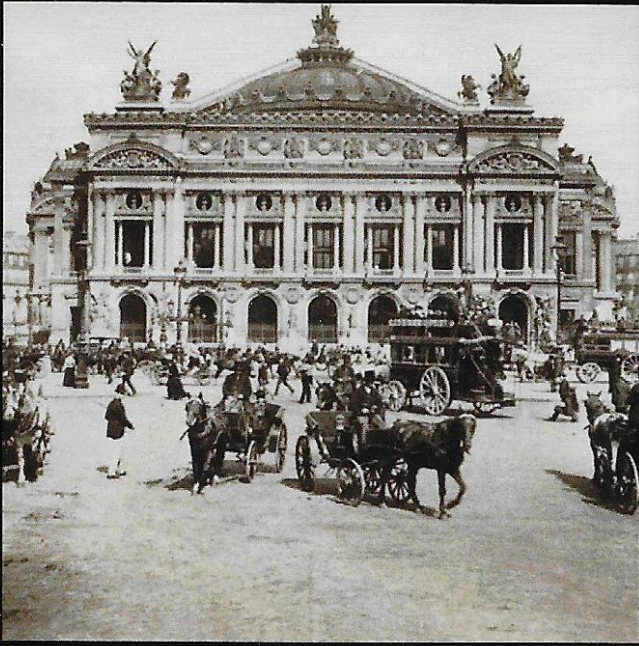
NOTRE-DAME CATHEDRAL, c.1900.



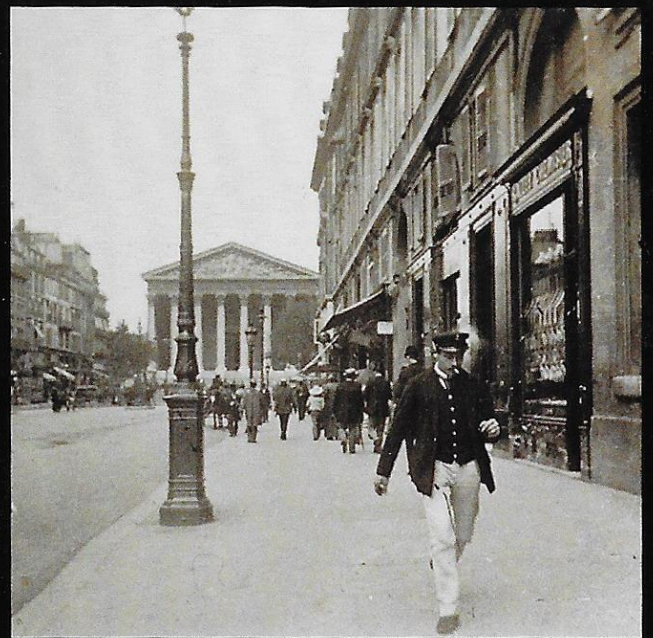
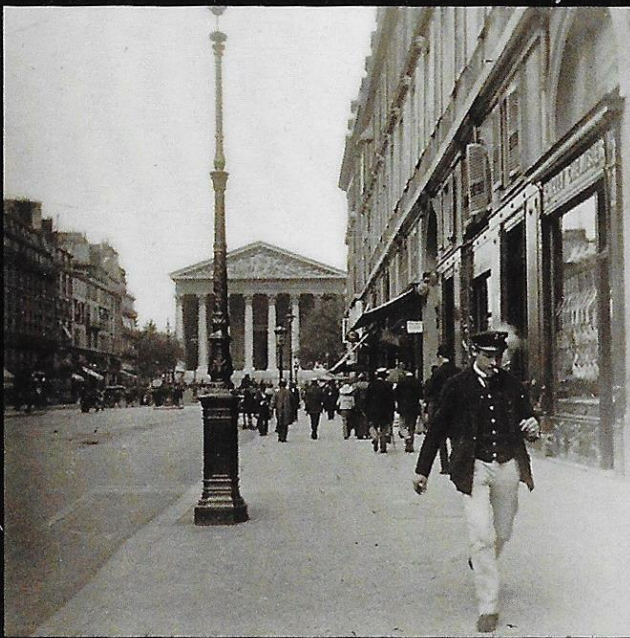
THE HOTEL DE VILLE (TOWN HALL).



THE CONCIERGERIE AND THE PONT AU CHANGE, 1897.

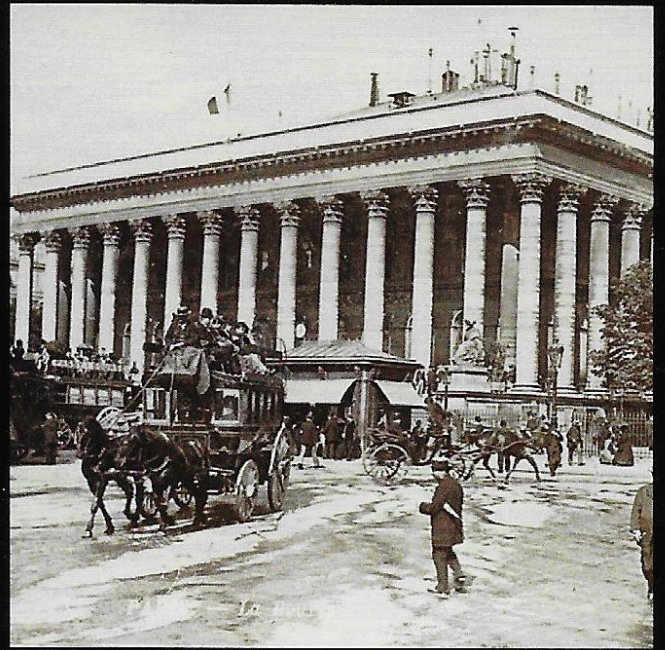


THE PLACE DE L'OPERA AND THE PALAIS GARNIER, c.1880.



THE RUE ROYAL, 1910.





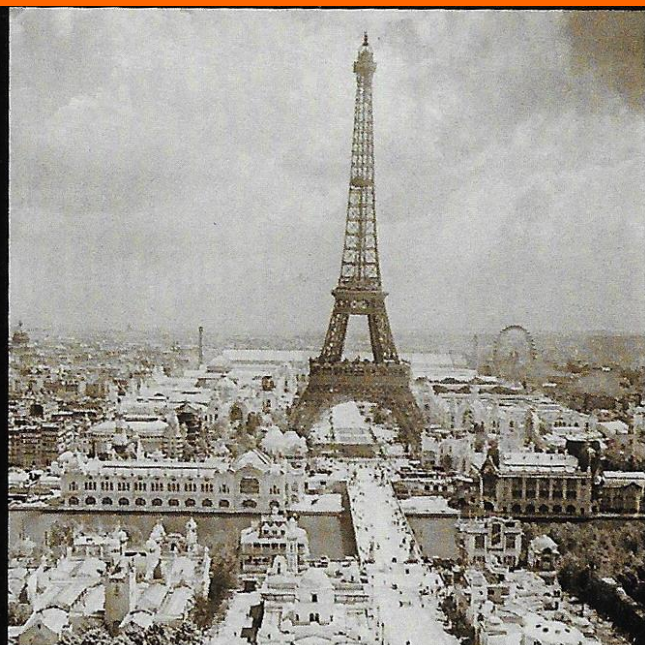
PALAIS BRONGNIART IN THE PLACE DE LA BOURSE.



ARC DE TRIOMPHE, 1898.



UNDER THE EIFFEL TOWER, TOWARD THE CHATEAU D'EAU,  
EXPOSITION UNIVERSELLE, 1900.



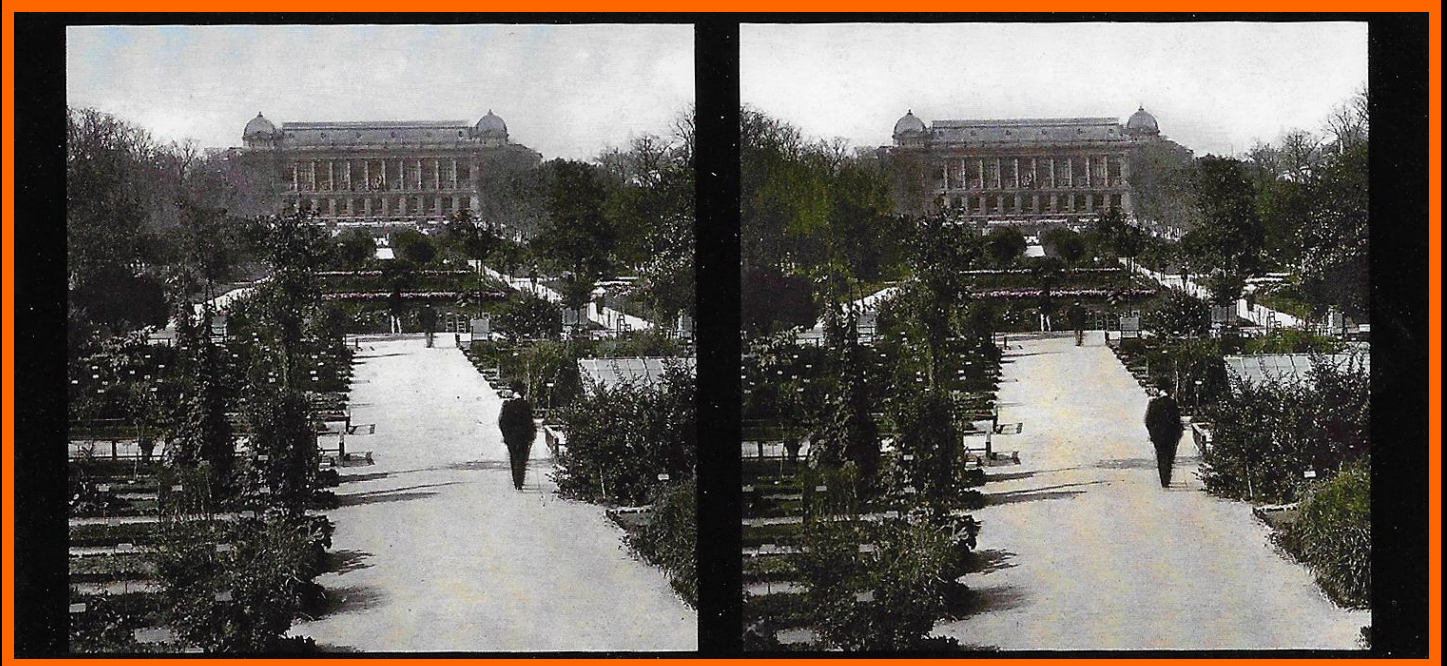
EIFFEL TOWER SEEN FROM THE TROCADERO,  
EXPOSITION UNIVERSELLE, 1900.



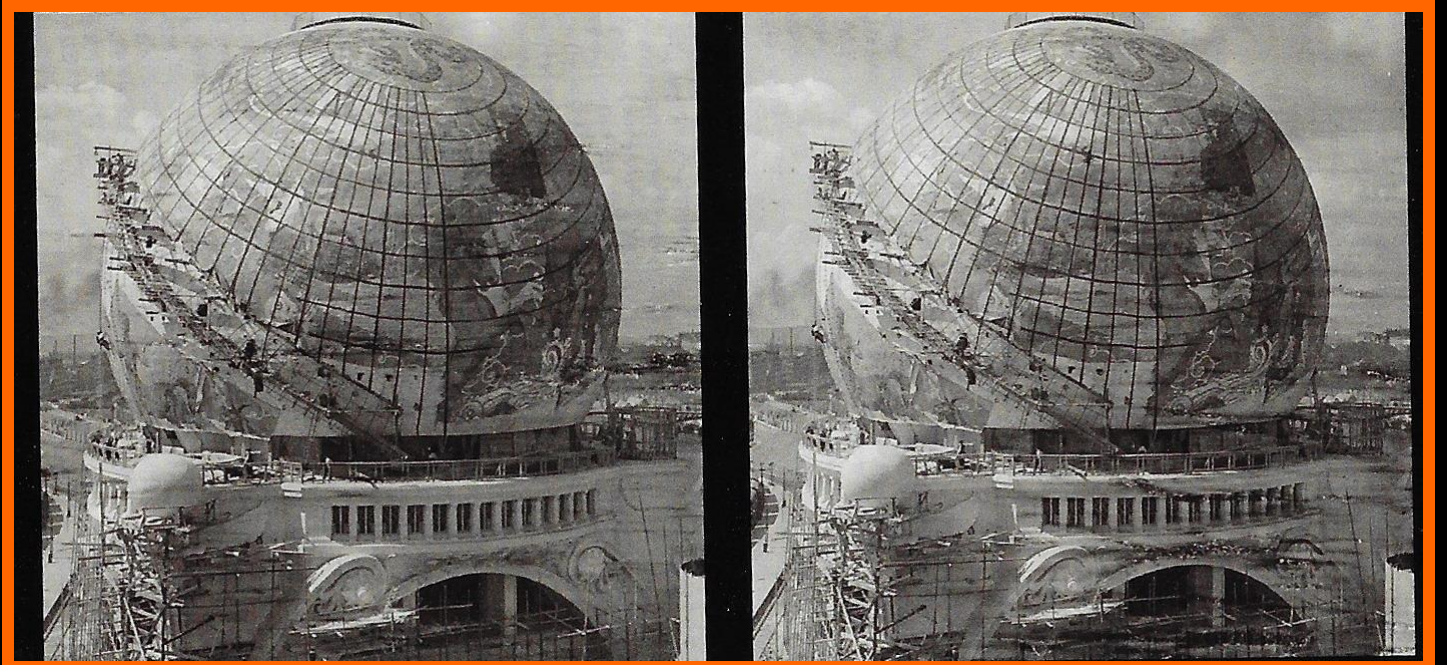
FLOWER MARKET AT 6.00 a.m., PONT SAINT-MICHEL.



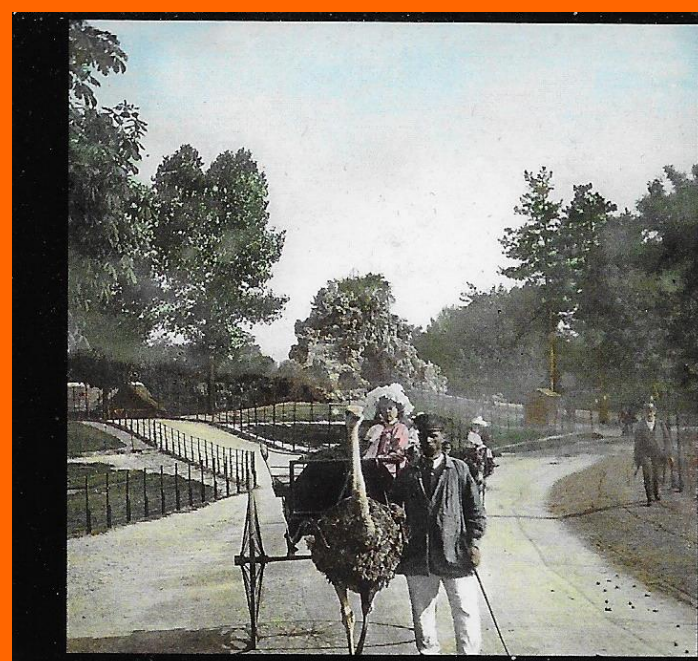
INTERIOR OF HORTICULTURAL HALL,  
EXPOSITION UNIVERSELLE, 1900.



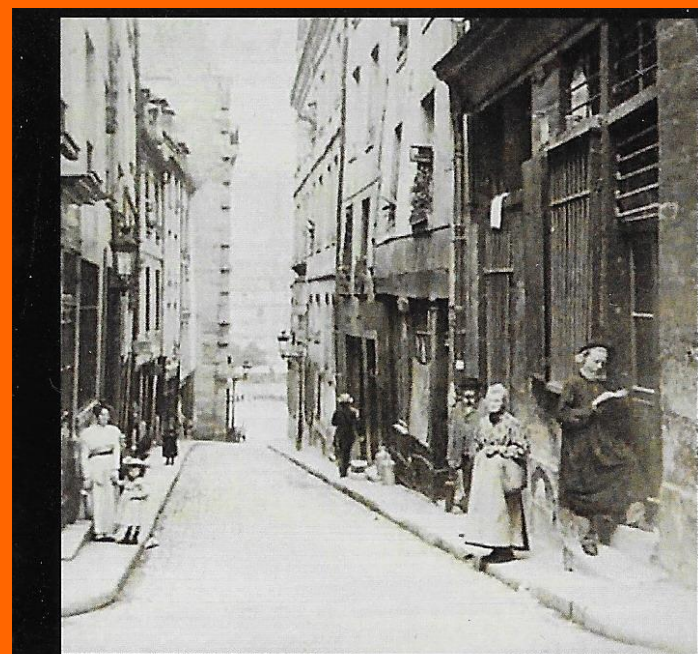
THE JARDIN DES PLANTES, 1895.



CONSTRUCTION OF THE GLOBE CELESTE,  
EXPOSITION UNIVERSELLE 1900.



OSTRICH RIDES AT THE JARDIN D'ACCLIMATATION.



NARROW STREET IN LATIN QUARTER,  
NEAR THE SORBONNE, 1905.

"The air of Paris is quite different from any other. There's something about it which thrills and excites and intoxicates you, and in some strange way makes you want to dance and do all sorts of other silly things. As soon as I get out of the train, it's just as if I had drunk a bottle of champagne."

— GUY DE MAUPASSANT



BLACK DOG  
& LEVENTHAL  
PUBLISHERS  
NEW YORK

VISIT [WWW.BLACKDOGANDLEVENTHAL.COM](http://WWW.BLACKDOGANDLEVENTHAL.COM)

DESIGN BY LIZ DRIESBACH PRINTED IN CHINA