



Atlanta: Steel barricades protect pedestrians crossing Whitehall Peachtree Street Viaduct c.1925.

HISTORIC PHOTOGRAPHS AMERICAN CITIES

PART ONE

**ATLANTA
BROOKLYN- NEW YORK
CLEVELAND**

BRIAN ROBERTS



The City of Brooklyn the third largest city in the USA before 1898 when it joined with New York.

INTRODUCTION

Historic photographs of buildings in a number of cities has been previously covered in a number of CIBSE Heritage Group electronic books on our website www.hevac-heritage.org. These are arranged in five Sections: Buildings, Churches, Cities and Places, Hotels, Movie Theatres. See also the Heritage Revisited Series.

CONTENTS

ATLANTA

Alabama Street, Flatiron Building, Peachtree Street, Piedmont Hotel, Terminal Station, Biltmore Hotel, Peachtree Street.

BROOKLYN- NEW YORK

Fulton Ferry Landing, Columbus Park, St. Georges Hotel, Montauk Club, Steeple Chase Park Coney Island, Brighton Beach, Fulton Street.

CLEVELAND

Union Terminal, Public Square, Case Block, Hollenden Hotel, Rockefeller Building, Arcade, Colonial Hotel, West Side Market, Lake View Cemetery, True Rotunda and Tower, Alcazar Hotel, Allerton Hotel, Hotel Hollenden, Statler Hotel.

BRIAN ROBERTS, Budleigh Salterton, 2022

ATLANTA ALABAMA STREET



Photograph of 1920. Left Century Building of 1902.
At the end of the street The Georgia Railroad Freight Depot (with cupola), built 1869.

ATLANTA FLATIRON BUILDING



Photograph c.1900. Built 1897 as the English-American Building, Atlanta's oldest surviving skyscraper at 11 floors predates by five years New York's more famous Flatiron Building. Architect Bradford Gilbert.

ATLANTA PEACHTREE STREET



Photograph c.1905. Street view of the Flatiron Building.

ATLANTA PIEDMONT HOTEL



Built 1903, photograph c.1920.

TERMINAL STATION



Photograph c.1905, year of opening. Once served 160 trains per day.
Architect P. Thornton Marye. Reinforced concrete construction. Demolished 1972.

ATLANTA BILTMORE HOTEL



Once known as "the South's supreme hotel" photograph 1949.
Converted to offices, retail and residences in 1998.

PEACHTREE STREET



Photograph 1949, looking towards the Carnegie Building and the Wincoff Hotel.

BROOKLYN FULTON FERRY LANDING



Photograph 1904. Landing built 1865. Ferries stopped running from Fulton Street in 1924.
In background the 6000 ft long, 272 ft high famous Brooklyn Bridge built 1869-83

COLUMBUS PARK



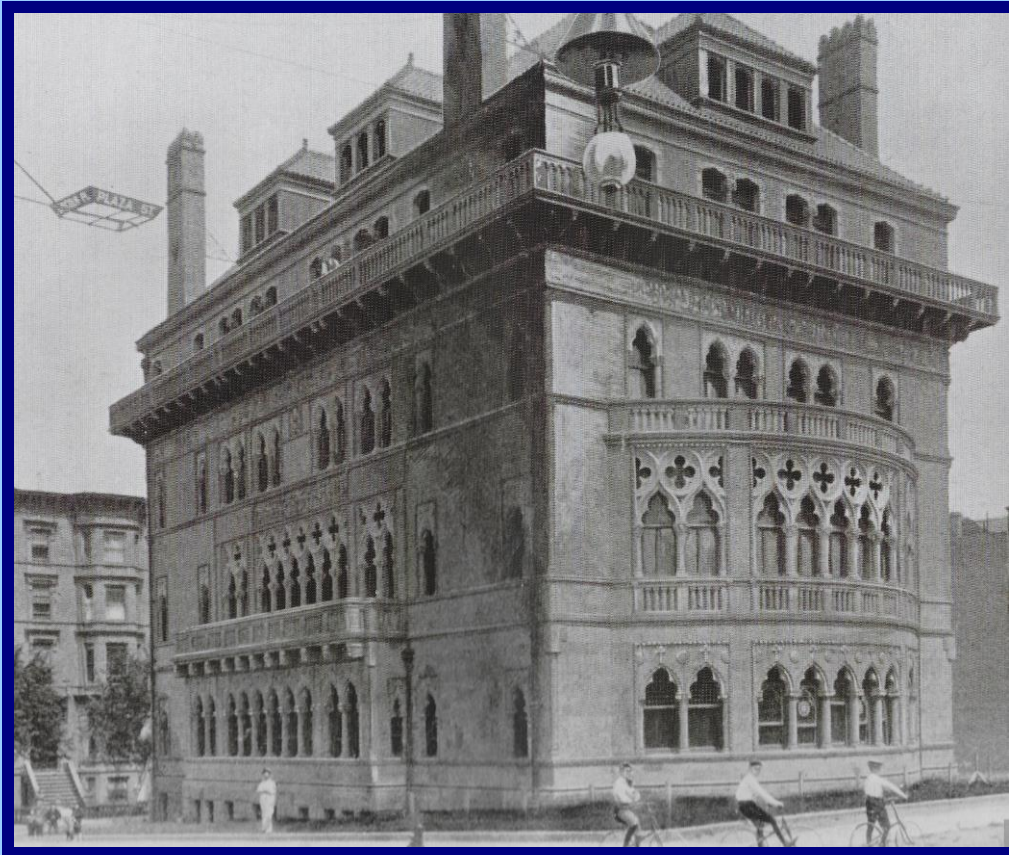
Photograph c.1905 with trolley buses and elevated railway.

BROOKLYN ST. GEORGE HOTEL



Photograph c.1906. Once the biggest hotel in New York with 2632 rooms. Said to have had "an early form of air conditioning." Note pavement fire hydrant.

BROOKLYN MONTAUK CLUB



Photograph c.1907. Built 1891 to resemble Venetian Gothic palazzo.

STEEPLECHASE PARK CONEY ISLAND



Photograph c.1950. George Tilyou's famous amusement park operated from 1897 to 1965.

BROOKLYN BRIGHTON BEACH HOTEL



Photograph c.1910. Opened 1878. After the shoreline was damaged in blizzard of 1888, the 300 ft long building was jacked up, placed on 100 flatcars running on temporary rail tracks and moved from shore.

FULTON STREET



Photograph c.1958. Note Automat, a coin-operated fast-food restaurant with meals in compartments.

CLEVELAND UNION TERMINAL



Opened 1928. Photograph c.1930. At 708 ft 52 floors, 2nd tallest in world after Empire State.
Over 1000 buildings demolished to make room for the railway. Hotel Cleveland on right.

PUBLIC SQUARE



Photograph c.1900. The Public Square dates back to 1796.
It was the site of first U.S. demonstration of electric street lights by local inventor Charles Brush.

CLEVELAND CASE BLOCK



Opened 1875. Photograph c.1907. Changed from Club to City Hall to Public Library.
Note the external (sunshade) awnings at windows in days before air conditioning.

HOLLENDEN HOTEL



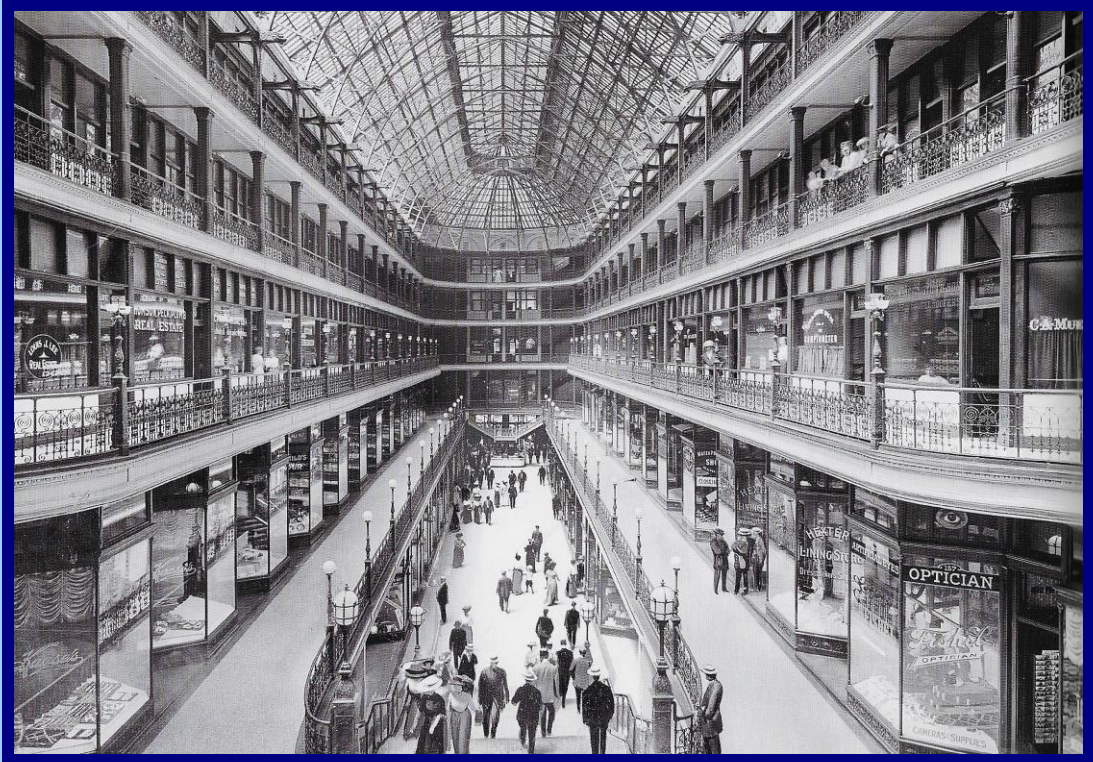
Opened 1885. Photograph 1903, 8 floors, 420 rooms (100 with bath) and electric lighting.
Reconstructed and enlarged 1925 and again in 1939.

CLEVELAND ROCKEFELLER BUILDING



Built 1905 by John D. Rockefeller founder of Standard Oil. Photograph c.1910.
Said to be inspired by Louis Sullivan's Guaranty Building in Buffalo.

CLEVELAND ARCADE



Opened 1890 based on Galleria Vittorio Emmanuele in Milan. Photograph 1910.
A 300 ft long light court "Cleveland's most beautiful building, then and now."

COLONIAL HOTEL



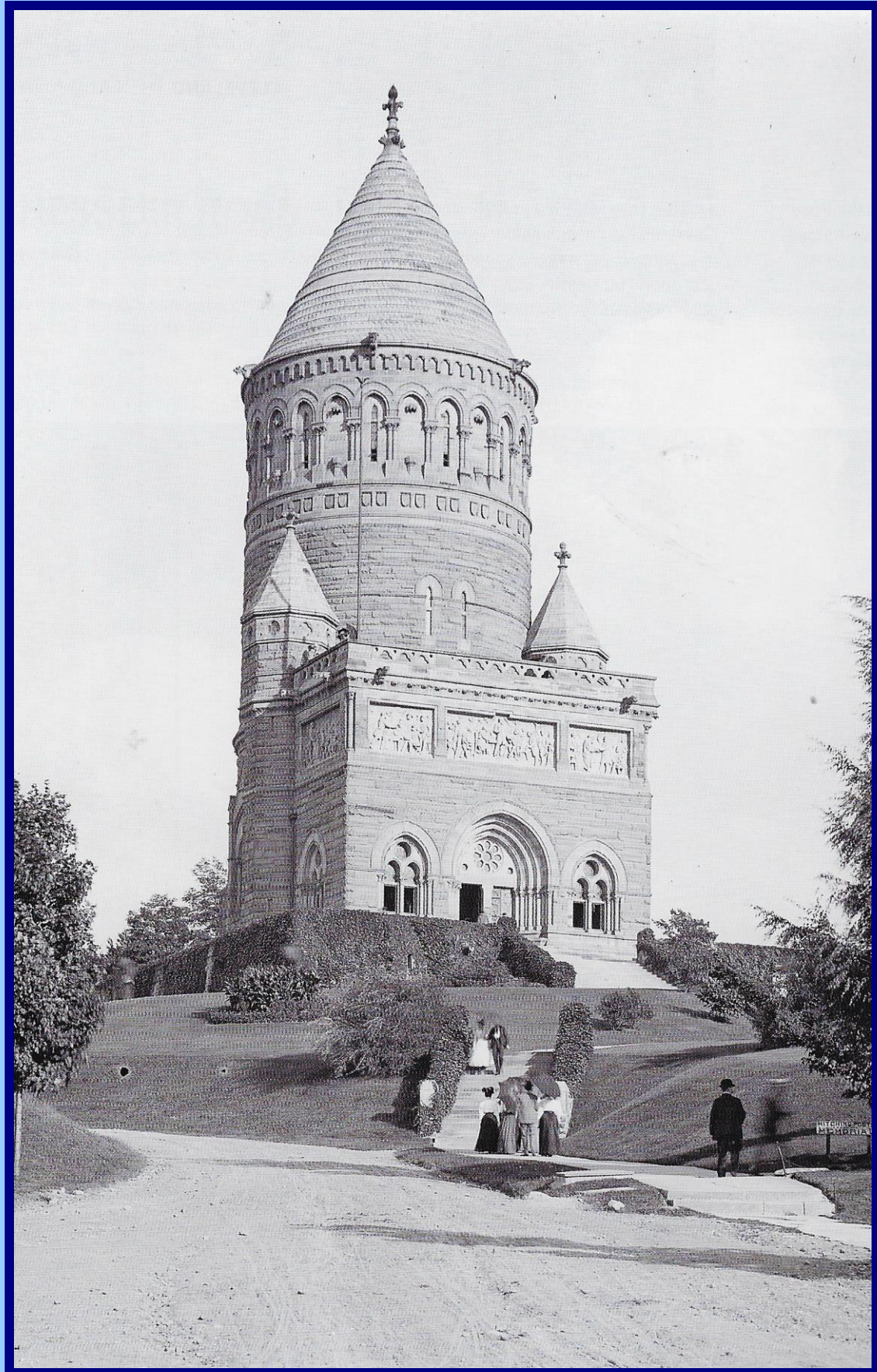
Photograph c.1900. Opened 1898, now Cleveland's longest-running hotel.

CLEVELAND WEST SIDE MARKET



Photograph 1919. Opened 1912 with 137 ft clock tower, 109 grocery stalls inside, 85 outside.

CLEVELAND LAKE VIEW CEMETERY



"Cleveland's finest" built in Victorian England style. Founded 1869. Photograph c.1900. The 188 ft monument contains coffin of the assassinated U.S. President James A. Garfield.

CLEVELAND TRUST ROTUNDA AND TOWER



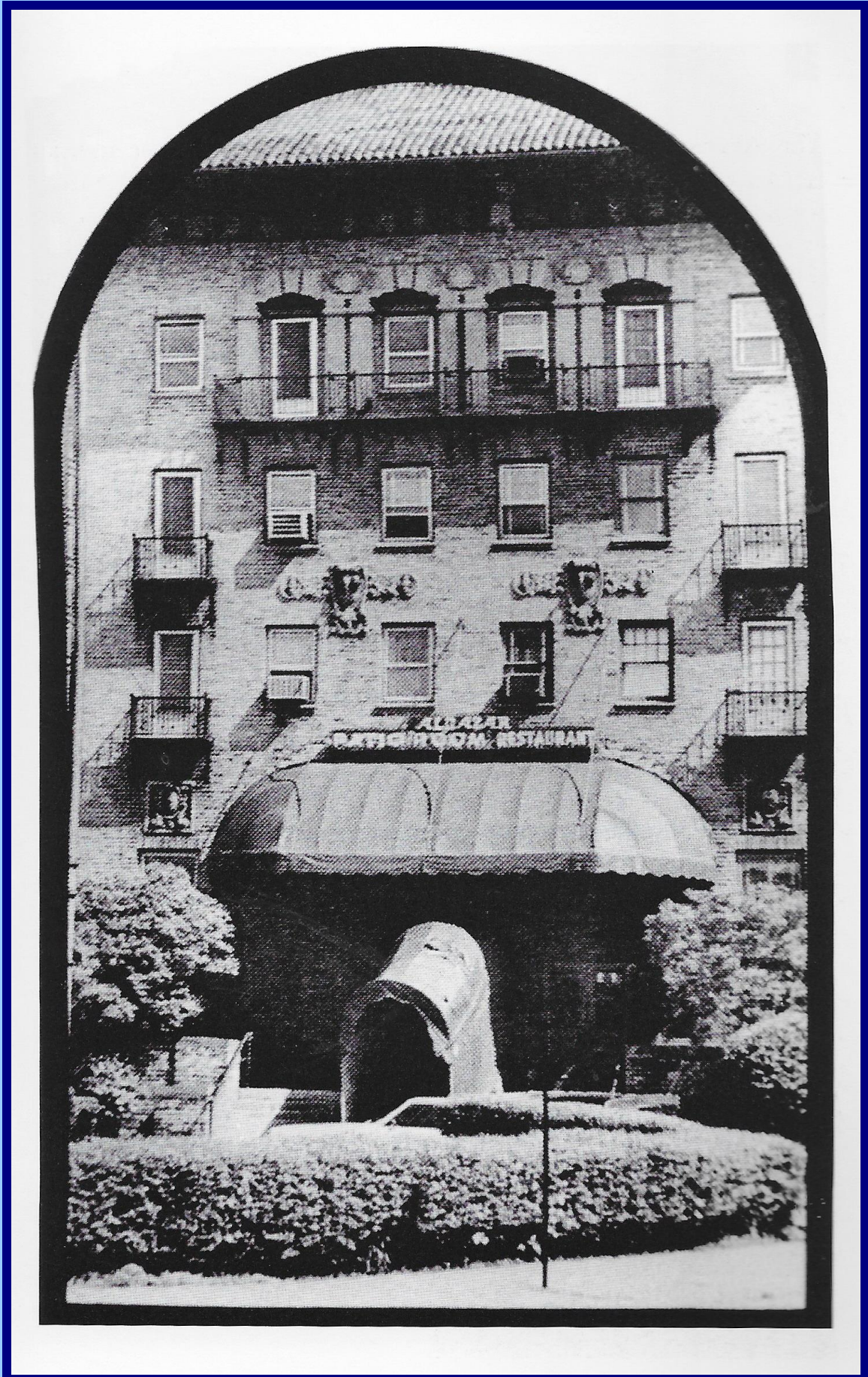
Opened 1908. Photograph 1948. Famous architect George B. Post.
First Bank building in Cleveland and the largest in the Midwest when built.

ALCAZAR HOTEL



Photograph 1931. Opened 1923 as "exclusive apartment hotel" 5 floors, 195 rooms.

CLEVELAND ALCAZAR HOTEL



Photograph described as showing "dazzling entrance" date unknown.

CLEVELAND ALLERTON HOTEL



Opened 1928 as a "bachelor hotel" but reserved 4 floors for women only. 550 rooms, 200 with baths.
16 hotel floors with 4 floors above for elevators, heating and mechanical services.
Ballroom could seat around 800 diners. Guests could also dine at floating tables in the swimming pool.

CLEVELAND HOTEL HOLLENDEN



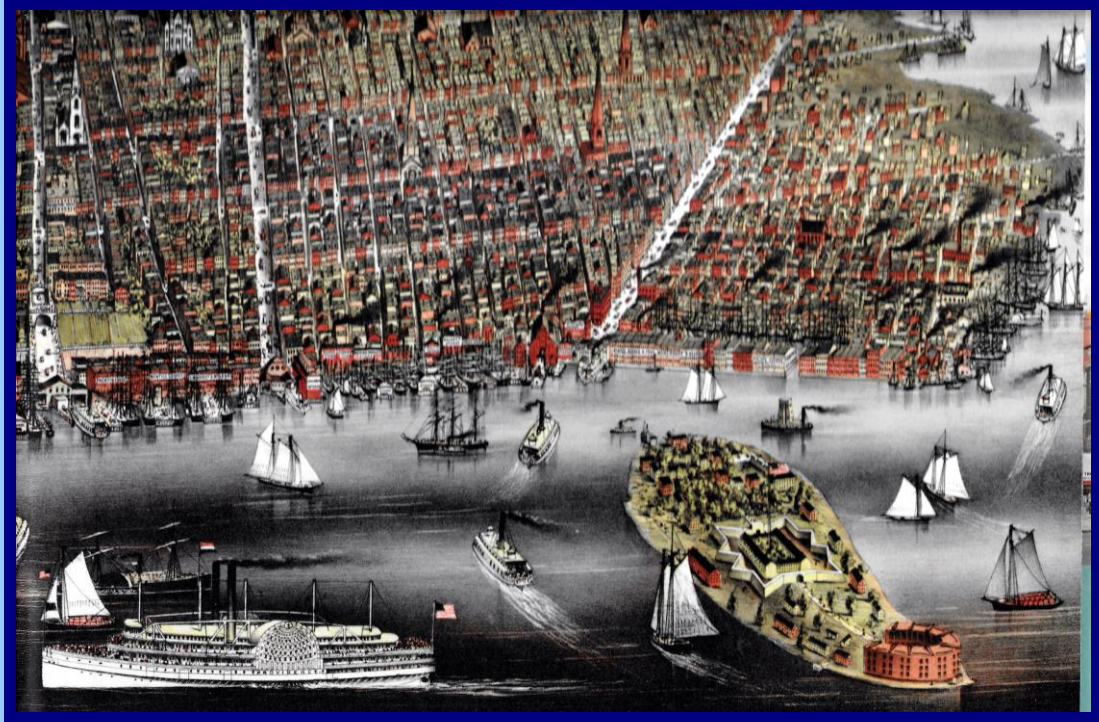
Its history is confusing. Seems redeveloped in 1925 and enlarged to 12 floors.
A 1939 extension added 500 rooms. Redeveloped yet again in 1965 but closed in 1989.

CLEVELAND STATLER HOTEL



Built 1925, has a chequered history- a book in itself.

HISTORIC PHOTOGRAPHS AMERICAN CITIES



The City of Brooklyn the third largest city in the USA before 1898 when it joined with New York.

MAIN REFERENCES

Where noted TAN=Then and Now Series, Pavilion Books, London.

PART ONE

- 2015 Atlanta, Michael Rose, TAN.
- 2015 Brooklyn, Marcia Reiss, TAN.
- 2014 Lost Grand Hotels of Cleveland,
Michael DeAloia. History Press, USA.
- 2018 Cleveland, Laura DeMarco, TAN.

PART TWO

- 2017 Memphis, Russell Johnson, TAN.
- 2014 Miami, Arva Moore Parks and Carolyn Klepser, TAN.
- 2004 Milwaukee, Sandra Ackerman, Thunder Bay Press, San Diego, CA.

PART THREE

- 2016 Pittsburgh, Pittsburgh History & Landmarks Foundation, TAN.
- 2017 Portland, Dan Haneckow, TAN.
- 2000 Seattle Then and Now, James Madison Collins, Thunder Bay Press, San Diego, CA.

PART FOUR

- 1967 Portal to America: The Lower East Side 1870-1925, Allon Schoener (Ed),
Holt, Rinehart & Winston, New York.
- 1973 Old New York in Early Photographs 1853-1901, Mary Black, Dover, New York.
- 2016 The Gilded Age in New York 1870-1910, Esther Crain, Black Dog & Leventhal, New York.