

Biltmore Hotel, Coral Gables, Miami. Photograph year of opening 1926.

# **HISTORIC PHOTOGRAPHS AMERICAN CITIES**

**PART TWO**

**MEMPHIS  
MIAMI  
MILWAUKEE**

**BRIAN ROBERTS**



Milwaukee River South with Oneida Street Power Station centre of photograph.

# INTRODUCTION

Historic photographs of buildings in a number of cities has been previously covered in a number of CIBSE Heritage Group electronic books on our website [www.hevac-heritage.org](http://www.hevac-heritage.org). These are arranged in five Sections: Buildings, Churches, Cities and Places, Hotels, Movie Theatres. See also the Heritage Revisited Series.

# CONTENTS

## MEMPHIS

Peabody Hotel, Goldsmith Store, Gayoso Hotel, Cotton Exchange, Masonic Temple, Porter Building, Columbian Tower, Brys Store, Tennessee Brewing, Medical Arts, Sears Building.

## MIAMI

Halycon Hotel, Flagler Street, News Tower, Biscayne Boulevard, Fontainebleau Hotel, Coral Gables School, Tiffany Hotel, Moore Store.

## MILWAUKEE

River view, Nunnemacher Opera House, City Hall, Iron Block Building, Chapman Store, Pfister Hotel, Republican Hotel, Schusters Store, Espenhain Store, Mitchell Building, St. Barnabas Cathedral, Pabst Mansion.



# MEMPHIS THE PEABODY HOTEL



Photograph of 1926, a year after completion of this the second Peabody Hotel. The original Peabody was built in 1868 by R.C. Brinkley and named by him after his friend George Peabody who had died during its construction. The 13 storey Italian Renaissance Revival style built was designed by Chicago Architect Walter Ahlschlager and is considered to be the only historic hotel in Memphis.

The hotel closed in the 1970s but reopened in 1980 after a major renovation. In 2005, there was additional renovations to the 464 guest rooms and 15 suites.



# MEMPHIS GOLDSMITHS DEPARTMENT STORE



Photograph 1940. This store was built in 1901, originally named Goldsmith and Brother and has five floors plus a nine-storey tower.

## GAYOSO HOTEL



The first hotel opened in 1842. Doubled to 250 rooms in 1858. Had its own waterworks, gasworks and sewage system. Destroyed by fire and rebuilt 1902. Photograph 1910.



# MEMPHIS MEMPHIS COTTON EXCHANGE



Exchange formed 1864. Built 1885 (photograph c.1900). Replaced by new building 1925.

# MASONIC TEMPLE



Built about 1850. Photograph 1895. Once housed State Government & Archives. Demolished 1910.



# MEMPHIS PORTER BUILDING



Photograph 1900. Built 1895 with 11 floors plus penthouse and basement. Claimed the first "circulated-water heating system" and city's first elevator.



# MEMPHIS COLUMBIAN MUTUAL TOWER



Photograph 1935. Opened 1924, 22 floors, a shorter copy of New York's Woolworth Building.



# MEMPHIS BRY'S DEPARTMENT STORE



Opened 1902. Photograph 1936. First store to sell sheet music written by W.C. Handy.

# TENNESSEE BREWING COMPANY



Photograph 1895. Built 1885. Survived Prohibition. Became major complex in 2017.



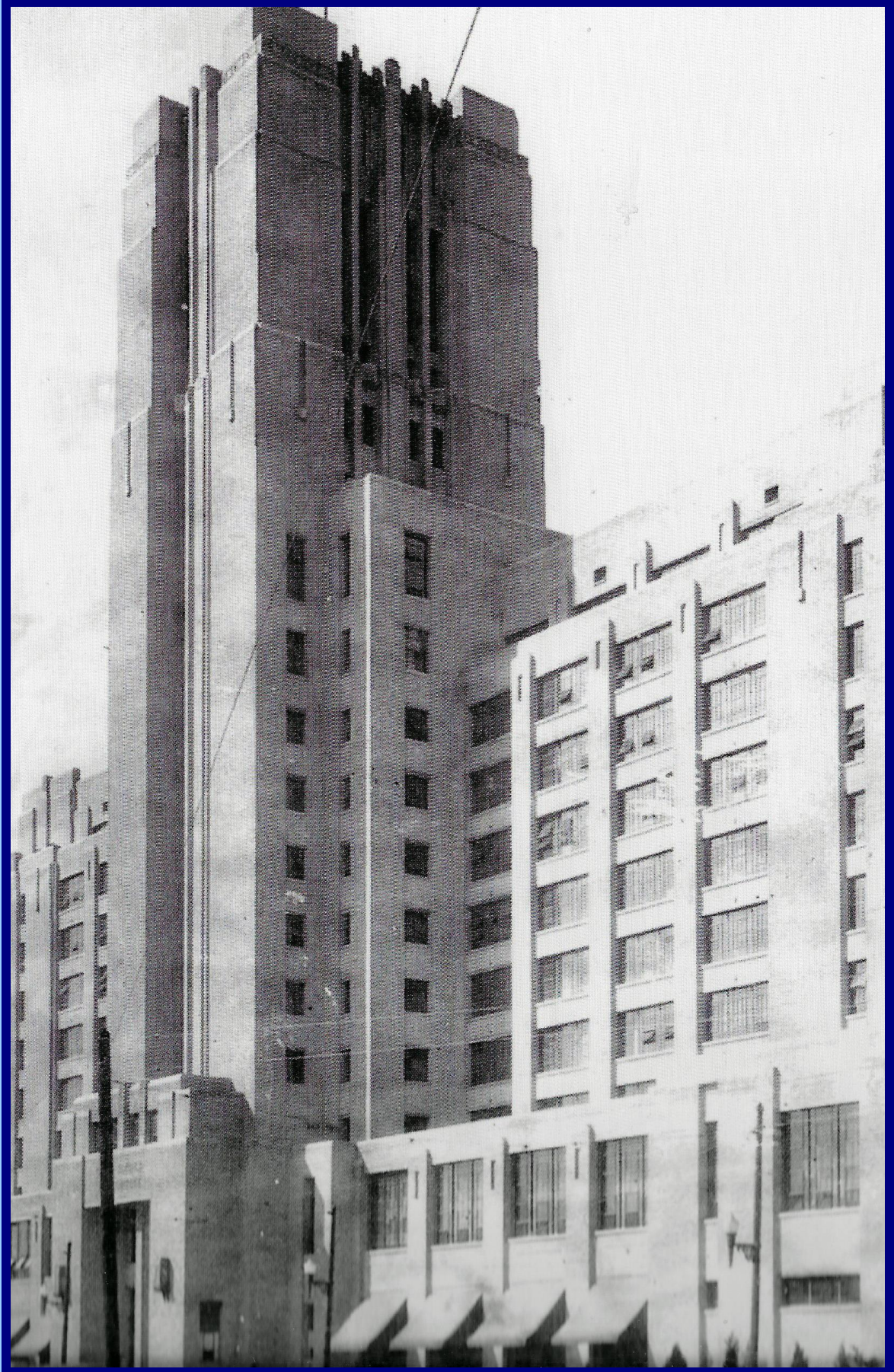
# MEMPHIS MEDICAL ARTS BUILDING



Photograph 1931. Built 1926, 8 floors, dedicated to the medical arts, until antiquated M&E services made it unsuitable for use by doctors. In 1952, the new owner made interior and exterior changes to the ground floor. Vacated 1971, damaged by fire 1993, conversion planned from 2017.



# MEMPHIS SEARS BUILDING



Photograph 1927, year of opening. Provided with a sprinkler system having 60,000-gallon water tank.



# MIAMI HALCYON HOTEL



Photograph c.1910 "The White Palace.". Built 1905. New York Architect Stanford White.

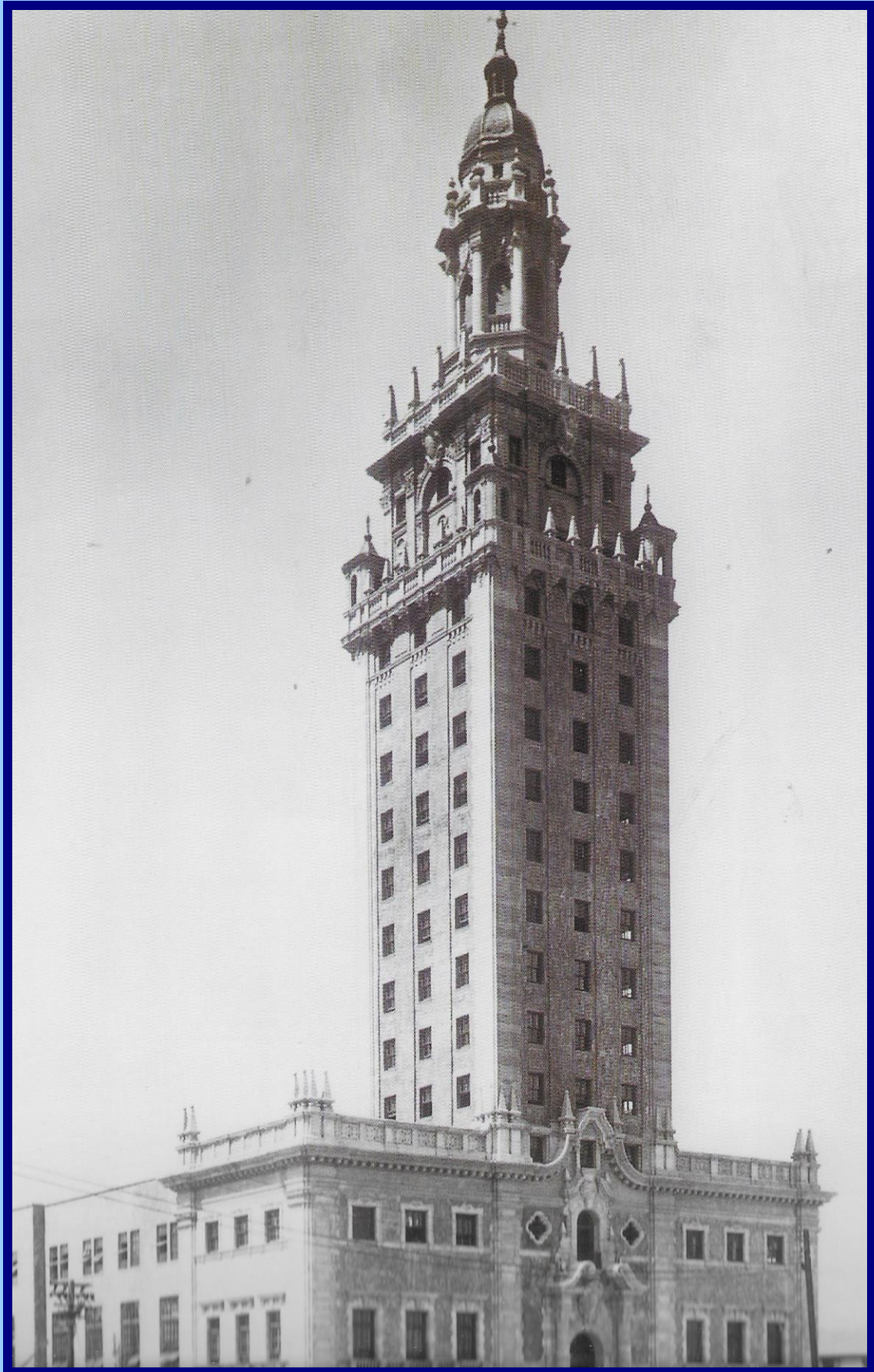
## FLAGLER STREET



Photograph date unknown.



# MIAMI MIAMI NEWS TOWER



Opened and photograph 1926. Patterned after Spain's Giralda Tower.  
By New York architect Schultze & Weaver.

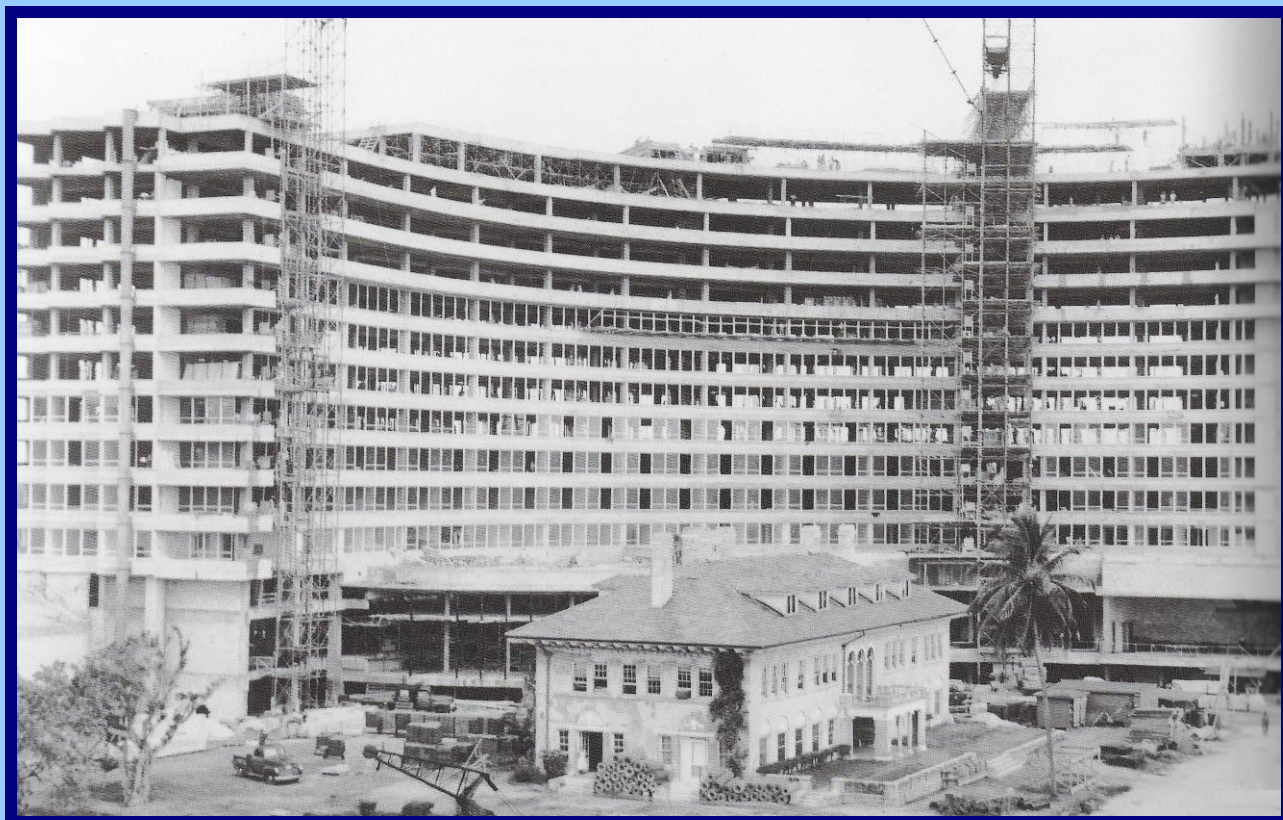


# MIAMI BISCAYNE BOULEVARD



Opened 1927 and soon dubbed "The Fifth Avenue of the South."

# FONTAINEBLEAU HOTEL MIAMI BEACH



Photograph under construction 1954. Opened the same year. Architect Morris Lapidus.



# MIAMI CORAL GABLES ELEMENTARY SCHOOL



Photograph c.1925. Built 1923, extended 1925 in keeping with "Mediterranean-themed community."

# TIFFANY HOTEL MIAMI BEACH



Photograph and built 1939 in Art Deco style. Architect L. Murray Dixon.



# MIAMI MOORE FURNITURE BUENA VISTA



Photograph under construction 1921. Buena Vista was incorporated into Miami in 1924.



# MILWAUKEE MILWAUKEE RIVER AT MICHIGAN



# NUNNEMACHER GRAND OPERA HOUSE



Date of photograph and when built unknown, but destroyed by fire in 1895.



# MILWAUKEE CITY HALL



Built 1896. Photograph 1898. Architect Henry Koch. Interior restored in the 1990s.



# MILWAUKEE IRON BLOCK BUILDING



Built around 1860 with cast-iron construction. Date photograph unknown. Building now restored.

# CHAPMANS DEPARTMENT STORE



Original store of 1877 destroyed by fire 1884. Larger replacement (shown) closed 1981.



# MILWAUKEE PFISTER HOTEL



Completed 1893. Has hosted many Presidents. Architect Henry Koch.

# REPUBLICAN HOTEL



Date of photograph and when built unknown. Turned into car park 1961.



# MILWAUKEE SCHUSTERS DPARTMENT STORE



Date of photograph and when built unknown. Opened before 1927.

# ESPENHAIN DEPARTMENT STORE



Espenhain Milwaukee opened 1875. This store 1906. Closed 1932 in the Great Depression



# MILWAUKEE MITCHELL BUILDING



Built 1876. Became the first Milwaukee bank. New owner in 1950s. Restored and used as offices.



# MILWAUKEE ST. STANISLAUS R.C. CHURCH



Opened 1873, the third Roman Catholic Church in the United States.



# HISTORIC PHOTOGRAPHS AMERICAN CITIES



Pabst Mansion built 1892 for Brewery Family. Became R.C. Archbishop residence 1908.

## MAIN REFERENCES

Where noted TAN=Then and Now Series, Pavilion Books, London.

### PART ONE

- 2015 Atlanta, Michael Rose, TAN.
- 2015 Brooklyn, Marcia Reiss, TAN.
- 2014 Lost Grand Hotels of Cleveland,  
Michael DeAloia. History Press, USA.
- 2018 Cleveland, Laura DeMarco, TAN.

### PART TWO

- 2017 Memphis, Russell Johnson, TAN.
- 2014 Miami, Arva Moore Parks and Carolyn Klepser, TAN.
- 2004 Milwaukee, Sandra Ackerman, Thunder Bay Press, San Diego, CA.

### PART THREE

- 2016 Pittsburgh, Pittsburgh History & Landmarks Foundation, TAN.
- 2017 Portland, Dan Haneckow, TAN.
- 2000 Seattle Then and Now, James Madison Collins, Thunder Bay Press, San Diego, CA.

### PART FOUR

- 1967 Portal to America: The Lower East Side 1870-1925, Allon Schoener (Ed),  
Holt, Rinehart & Winston, New York.
- 1973 Old New York in Early Photographs 1853-1901, Mary Black, Dover, New York.
- 2016 The Gilded Age in New York 1870-1910, Esther Crain, Black Dog & Leventhal, New York.