

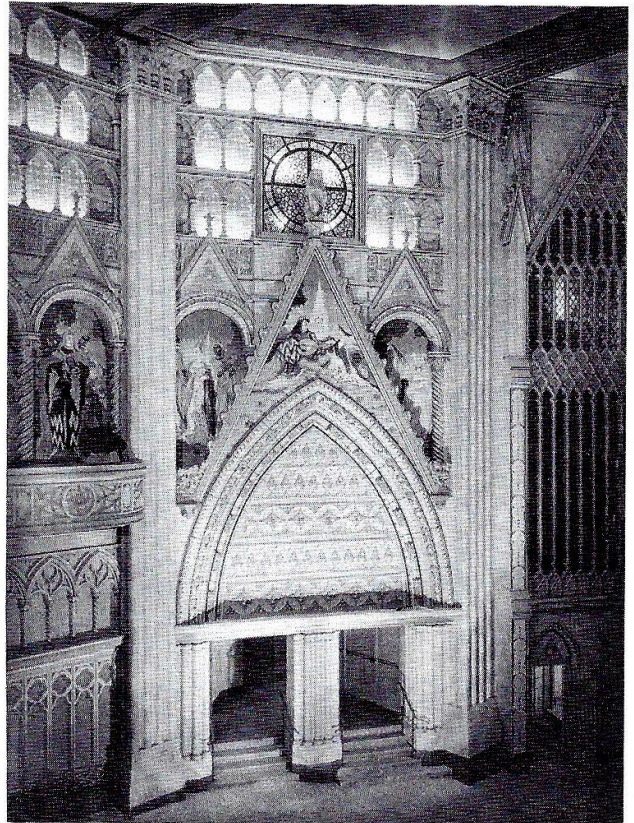
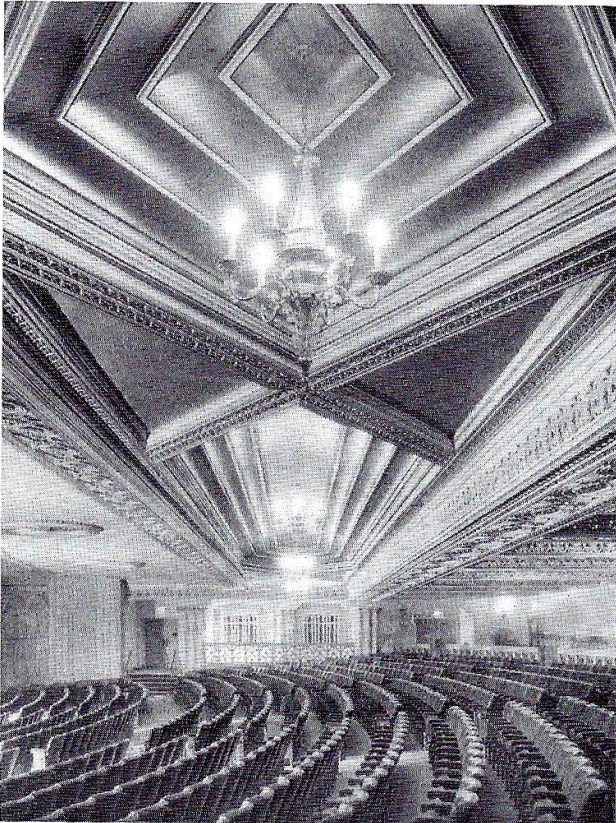
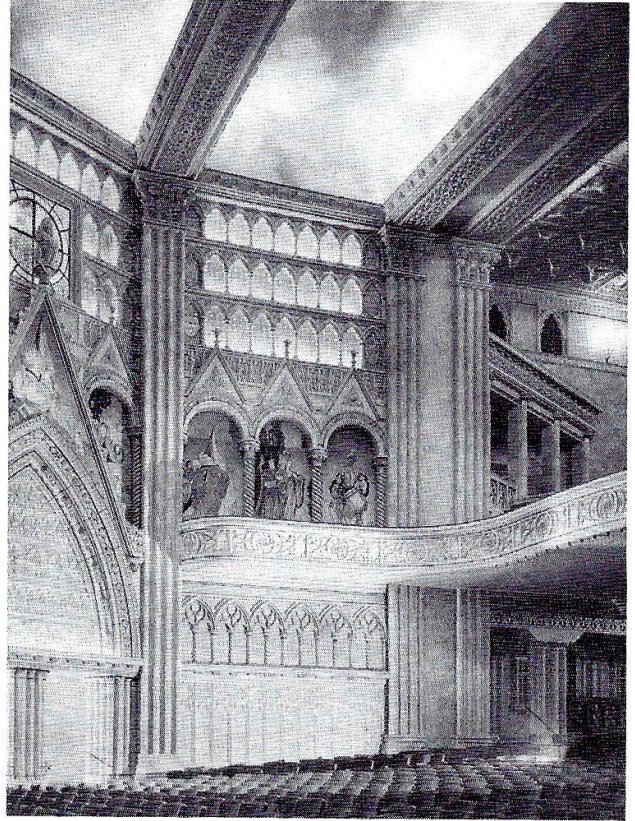


ARCHITECTURE AND HISTORY

GRANADA THEATRE
TOOTING LONDON
1931-1973

BRIAN ROBERTS

GRANADA THEATRE TOOTING



GRANADA THEATRE TOOTING



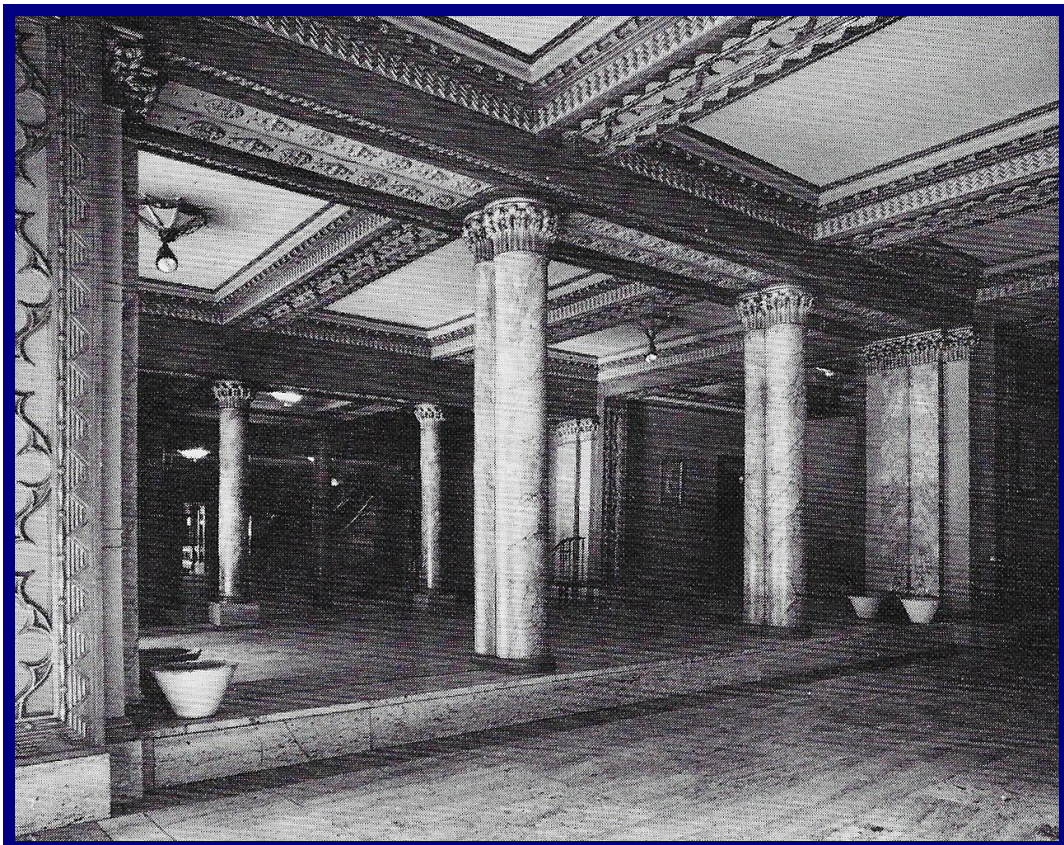
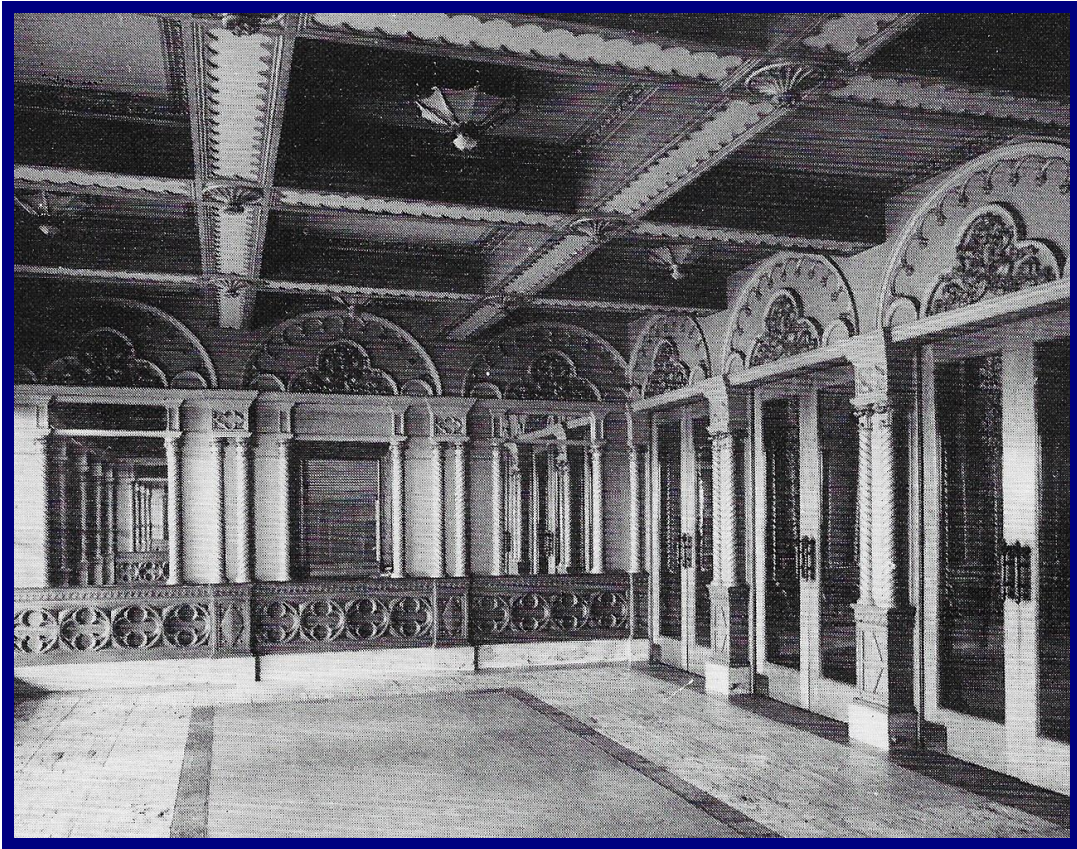
INTRODUCTION

This Book, features historic photographs with supplementary notes on the Granada Theatre, once a cinema in south London. Information sources include the specialist website *Cinema Treasures*. Many of the interior colour photographs are from *Historic England*.

Located on Mitcham Road in the south London district of Tooting, the Granada Theatre opened on Monday 7th September 1931 for Sydney Bernstein's Granada Theatres chain and became the flagship of the circuit. The architect of the building was Cecil Massey. The style has been called both Moderne Italianate and Art Deco having a "towering entrance with four tall pillars topped by Corinthian capitals." The interior decoration of the theatre was designed in a Gothic style by the famed Russian stage-set designer Theodore Komisarjevsky. On the side walls at balcony level are a series of panels with painted murals of medieval figures painted by Alex Johnstone from small originals by Lucien Le Blanc. The theatre seats 3104 persons, though considerably more have been claimed. Many celebrity concerts have been held on its stage. It became a bingo hall in 1976, but has been largely restored having been listed Grade I by English Heritage in September 2000.

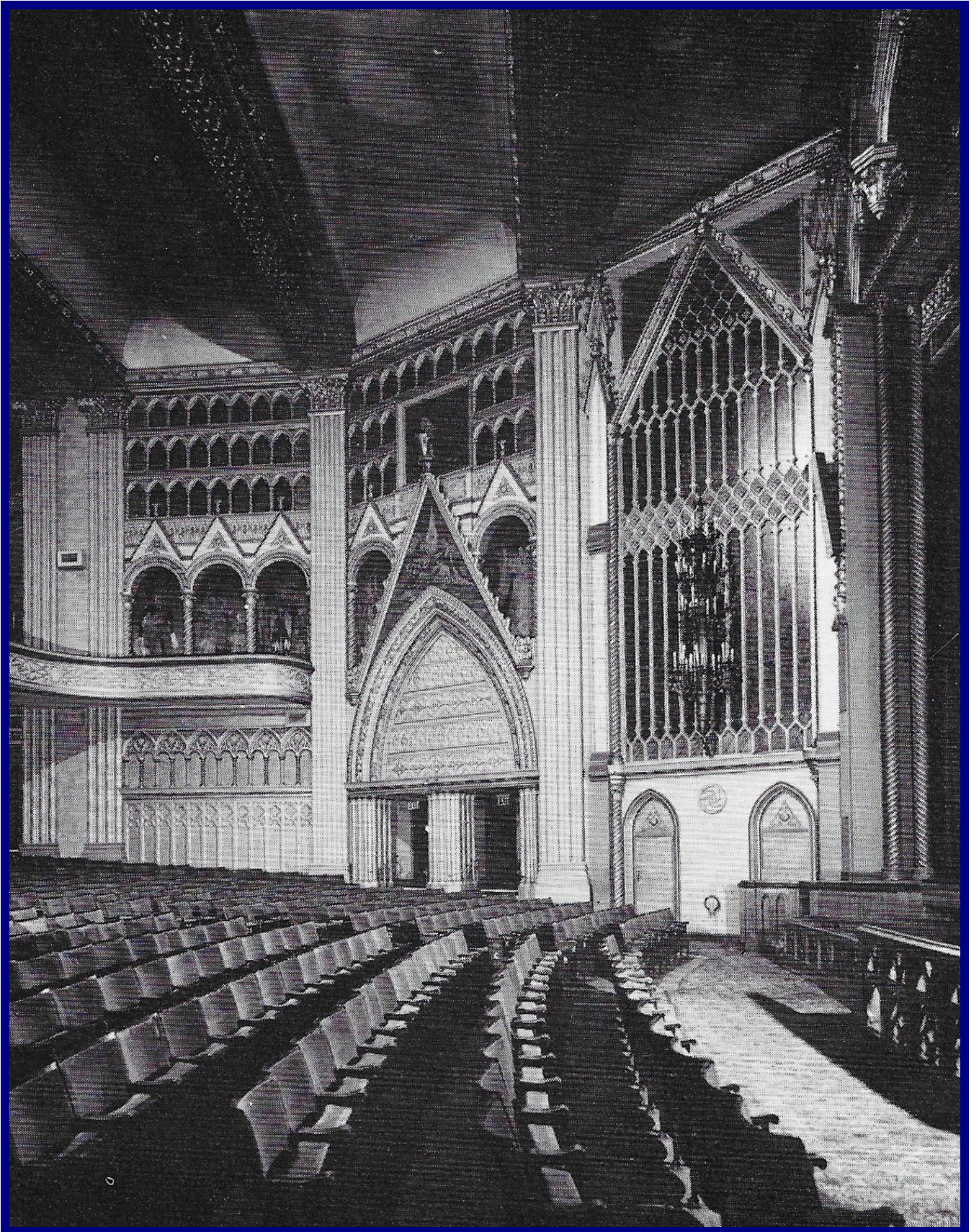
<4>

ENTRANCE FOYER



<5>

AUDITORIUM STALLS



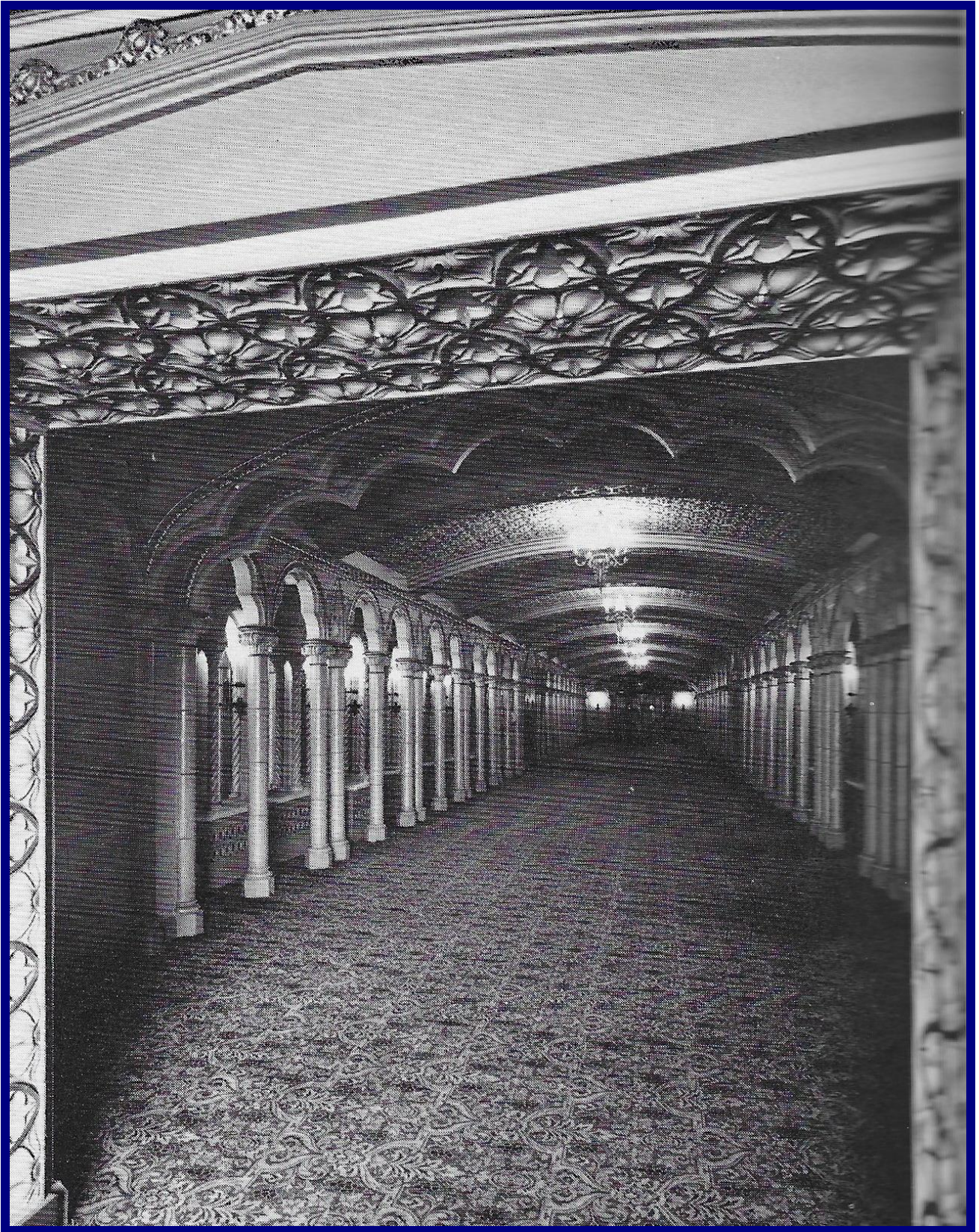
<6>

AUDITORIUM CEILING



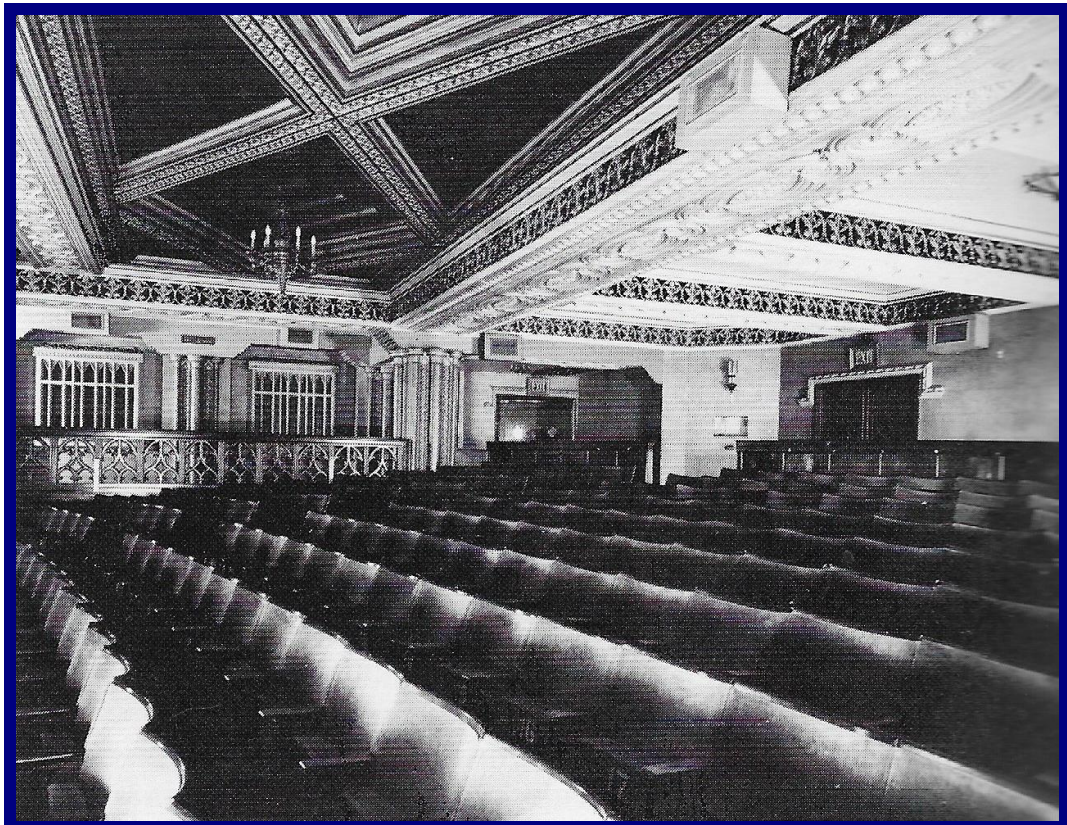
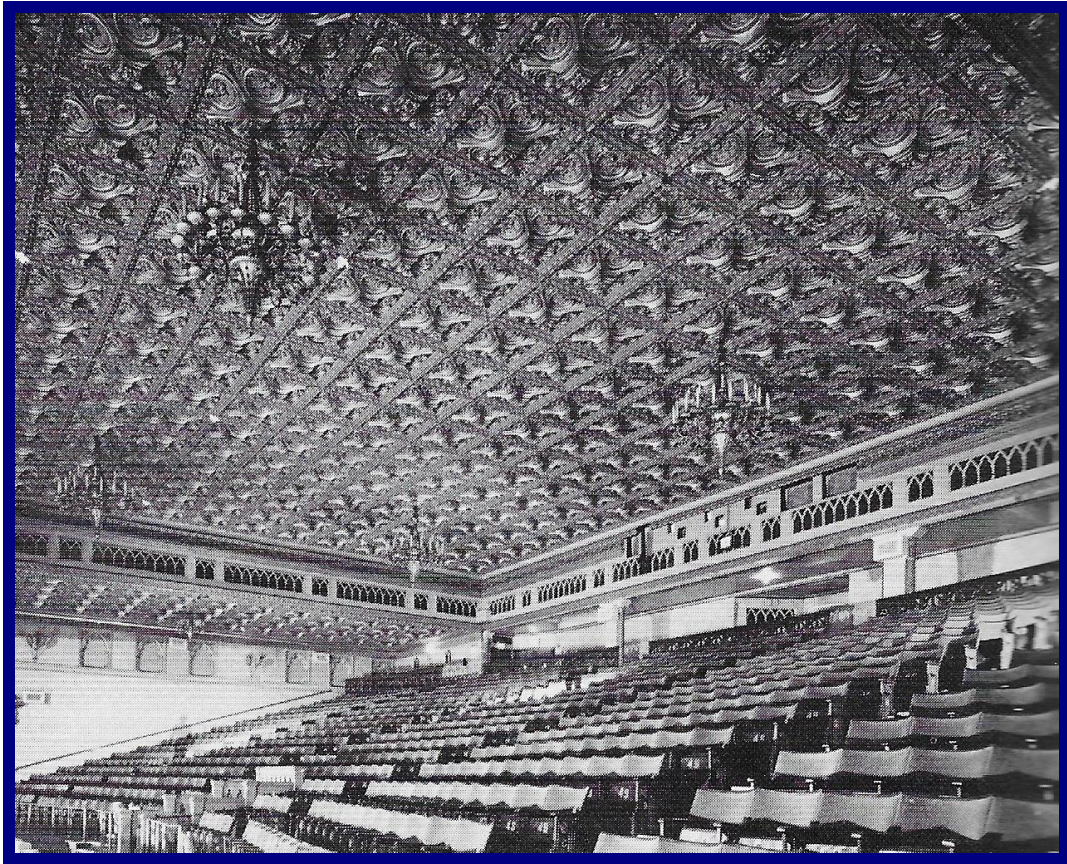
<7>

CIRCLE FOYER

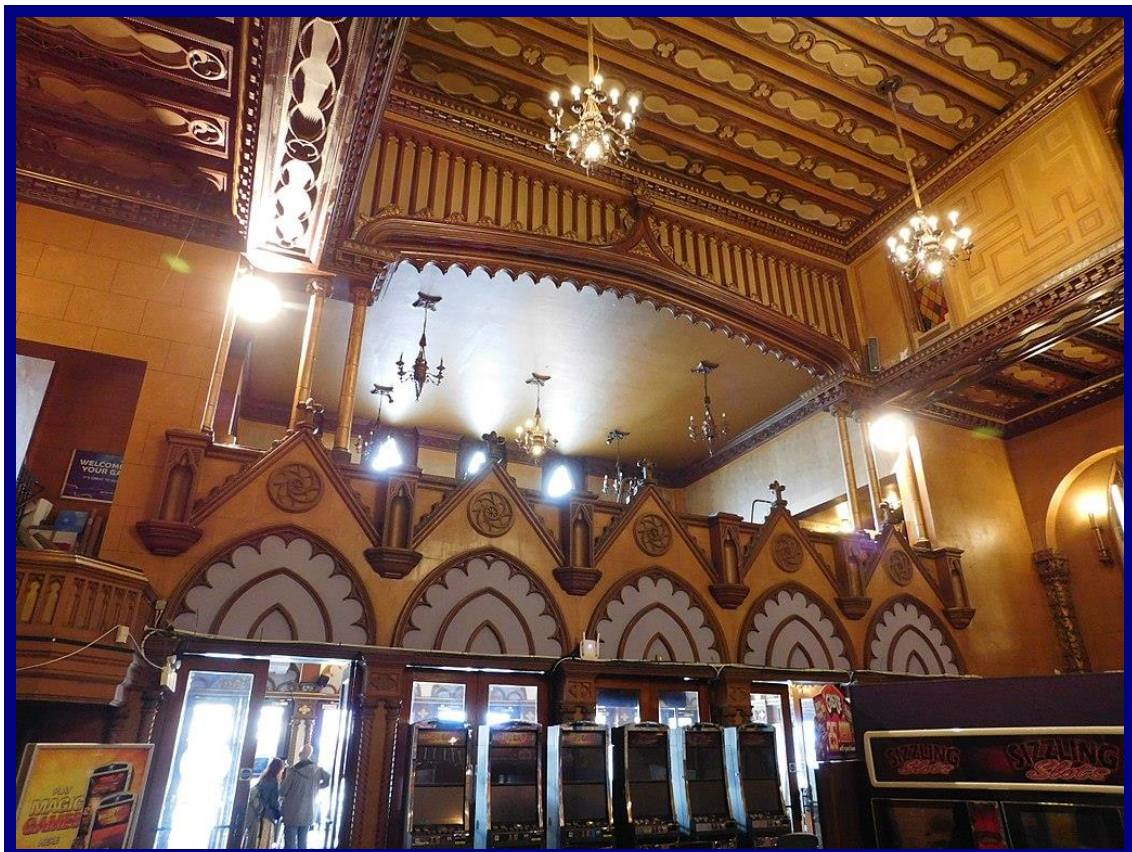
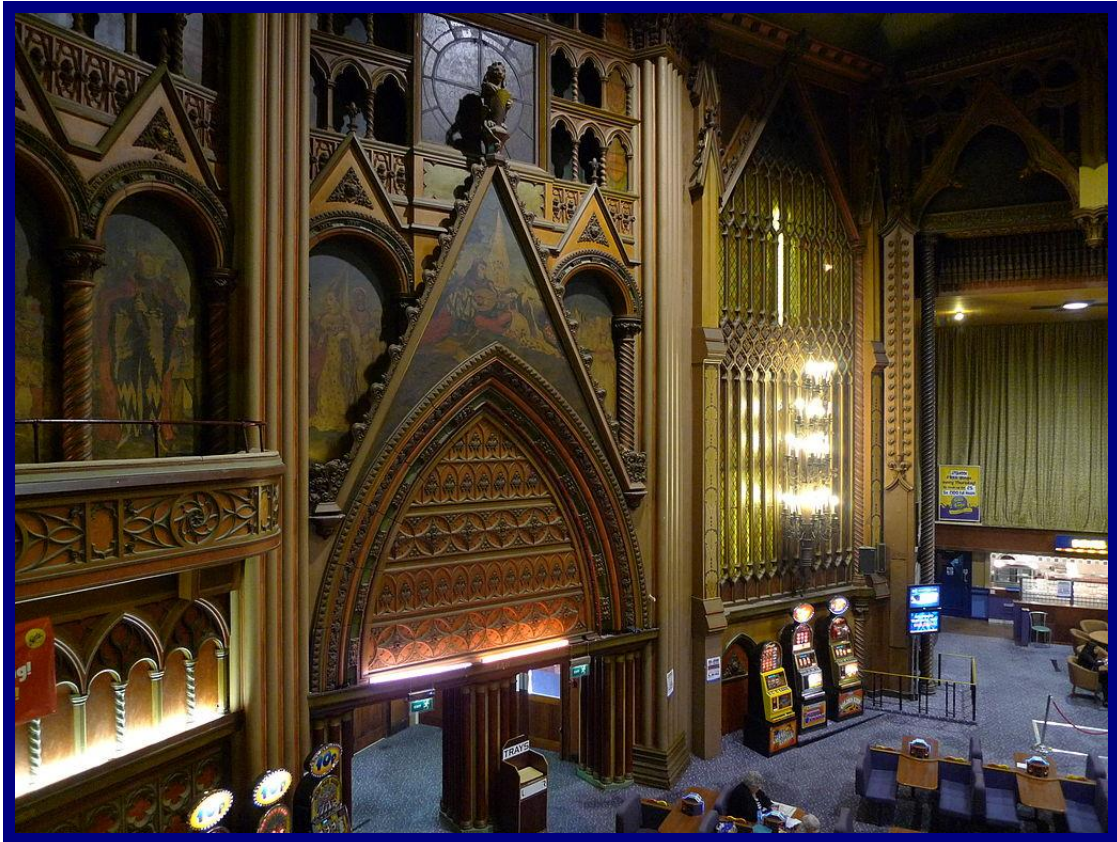


<8>

CIRCLE

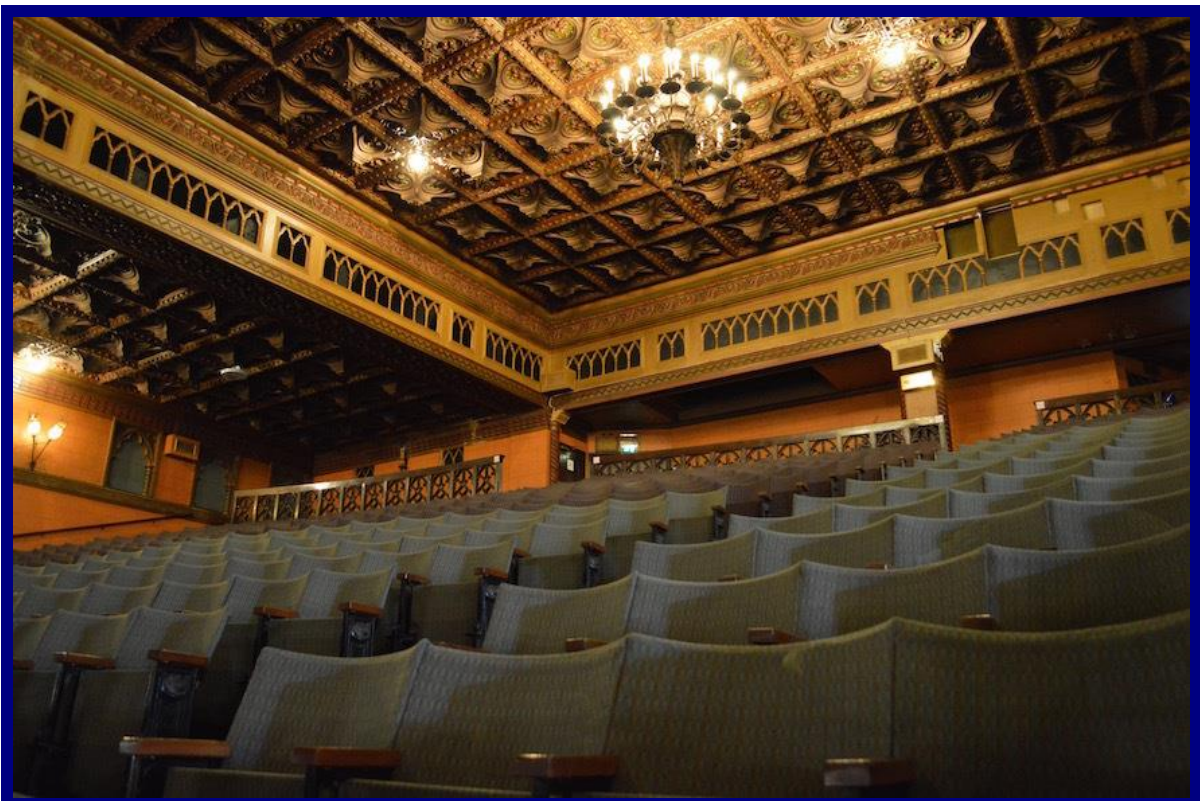
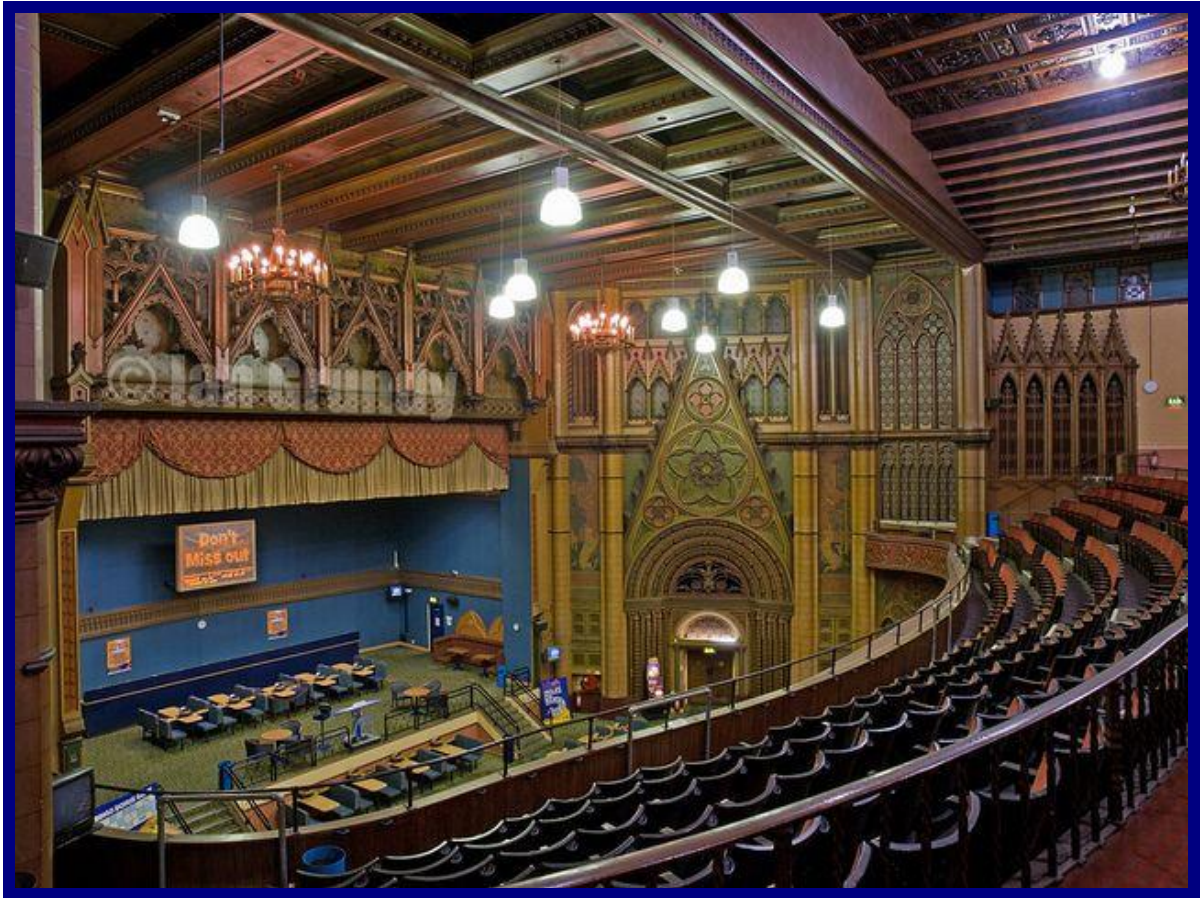


ENTRANCE TO AUDITORIUM



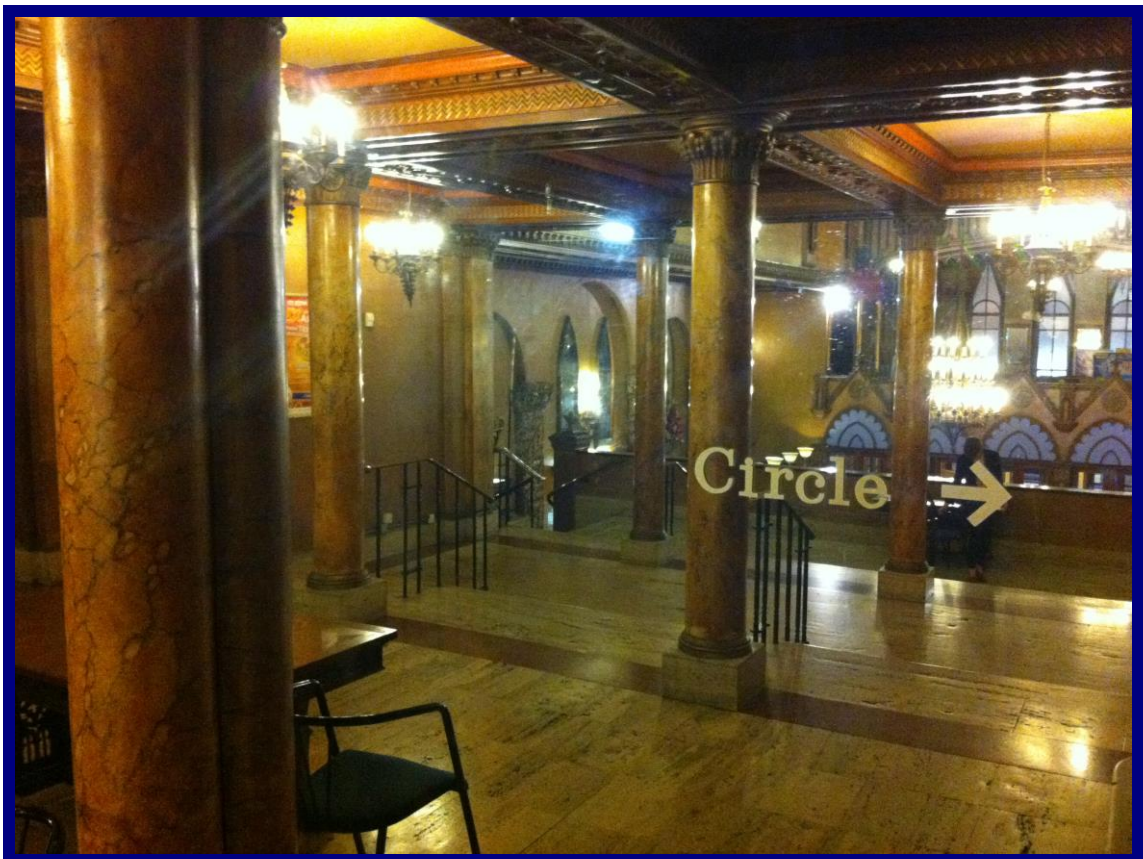
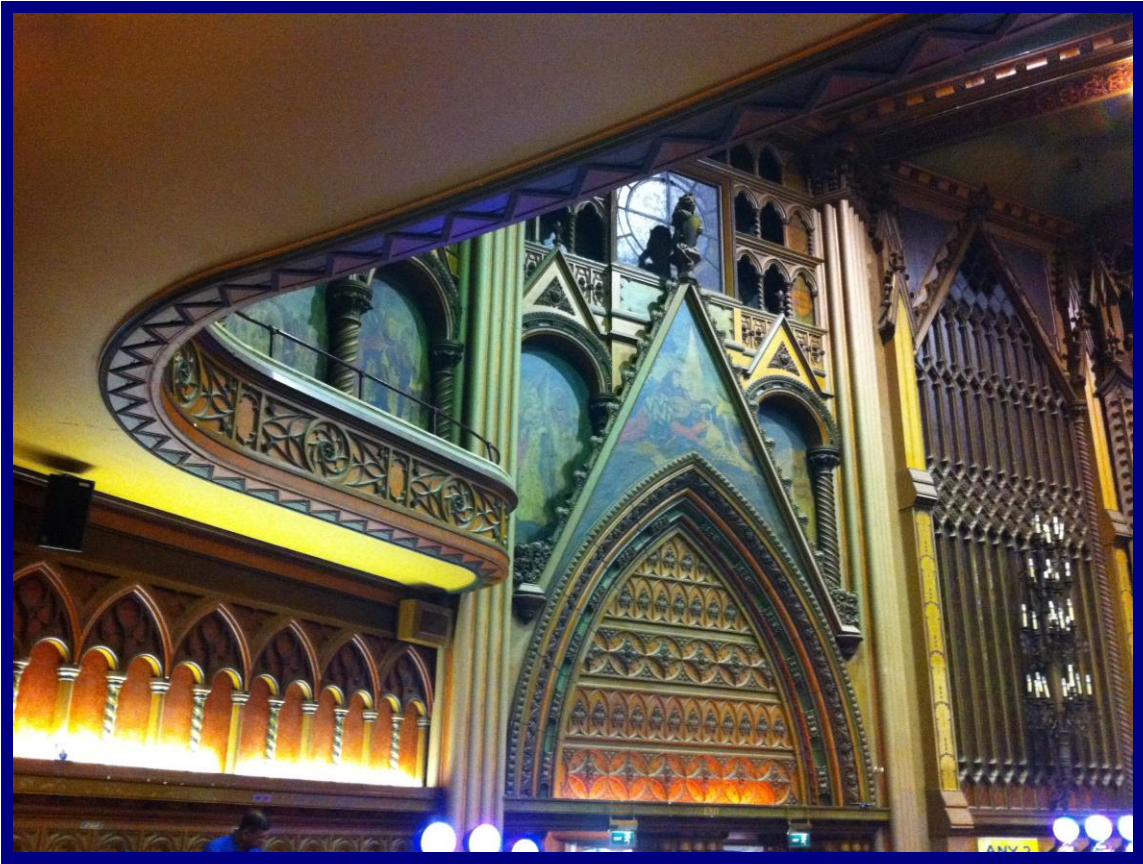
<10>

SEATS IN THE CIRCLE



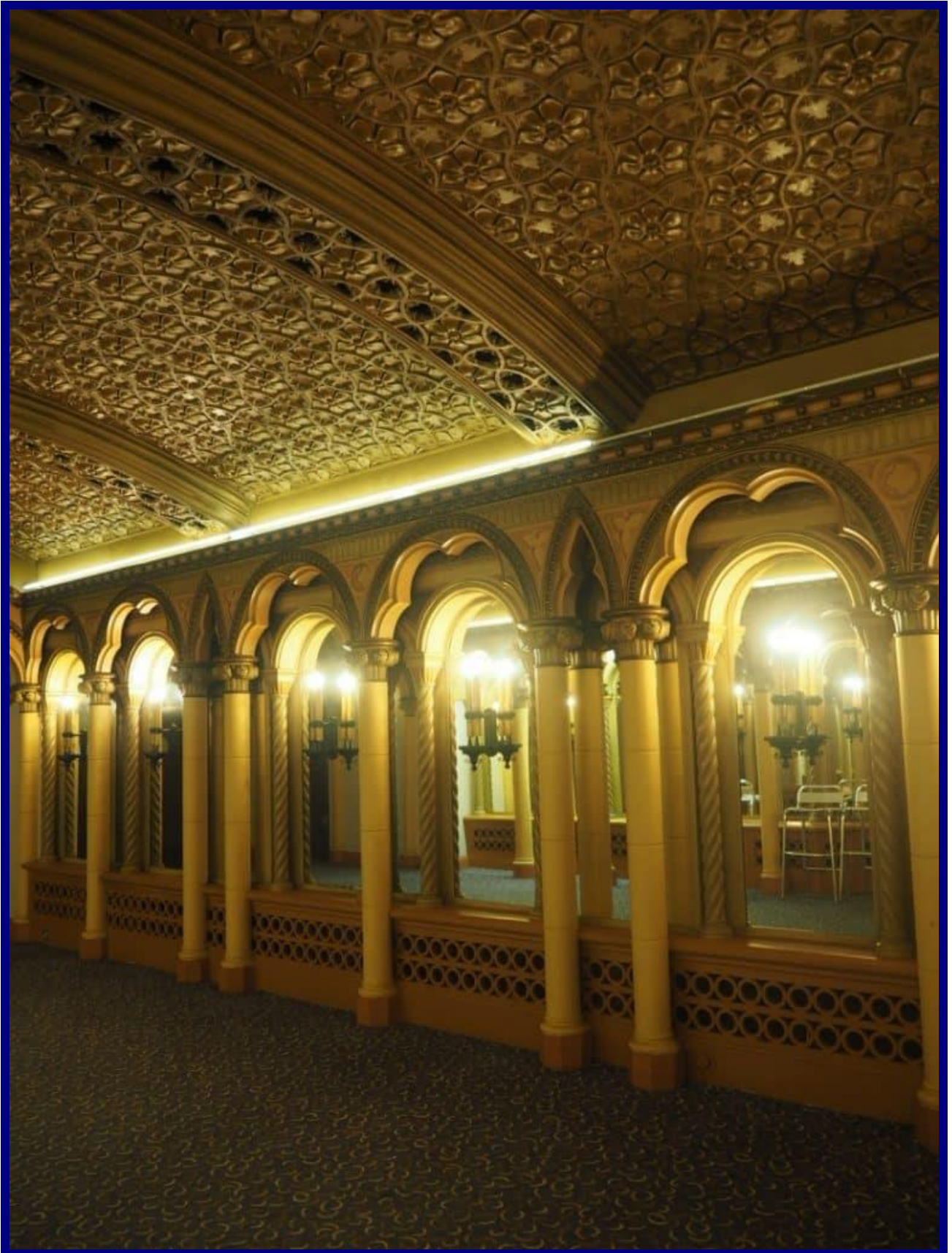
<11>

AUDITORIUM AND CIRCLE FOYER

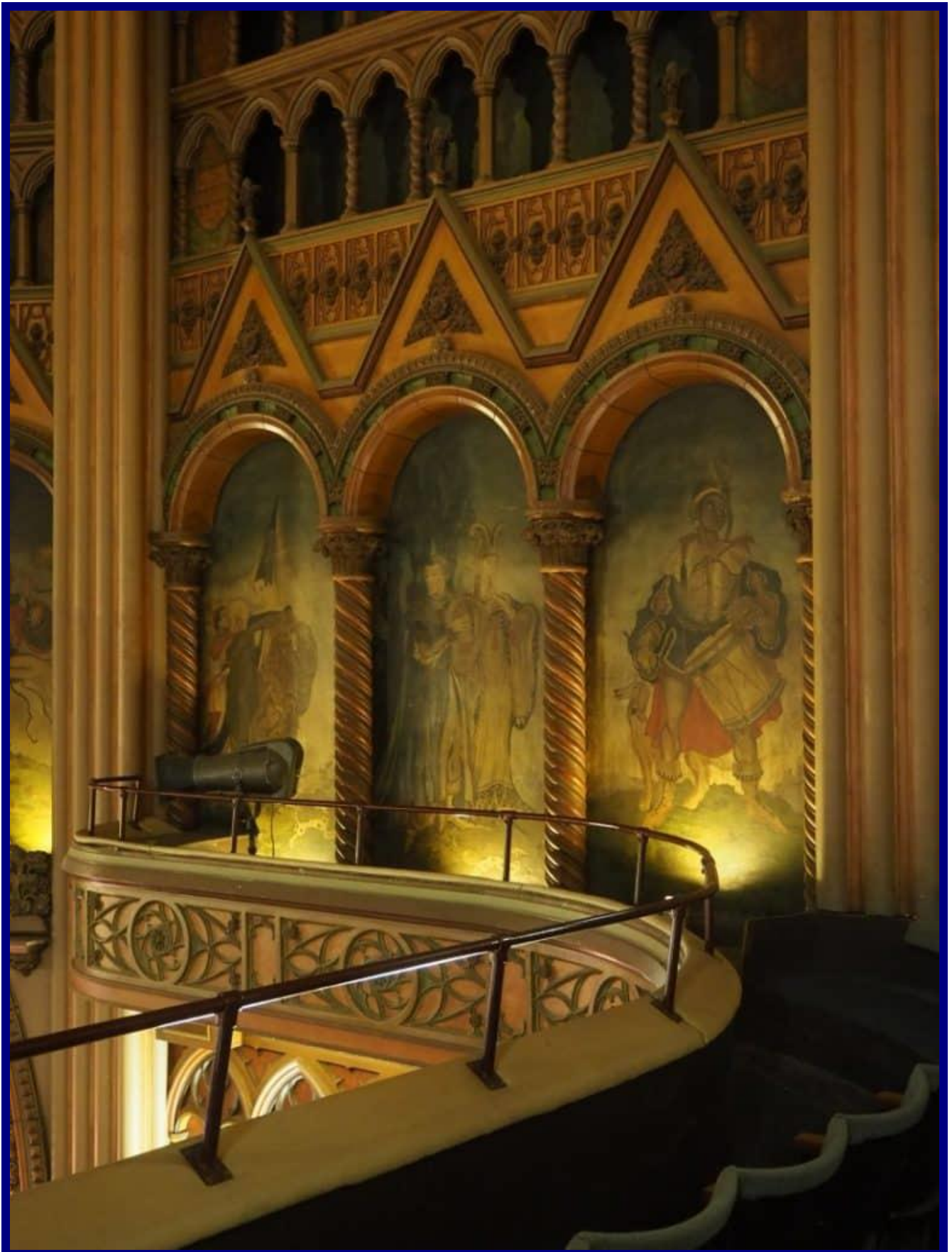


<12>

CIRCLE FOYER



CIRCLE WALL PAINTINGS



<14>

AUDITORIUM DECOR



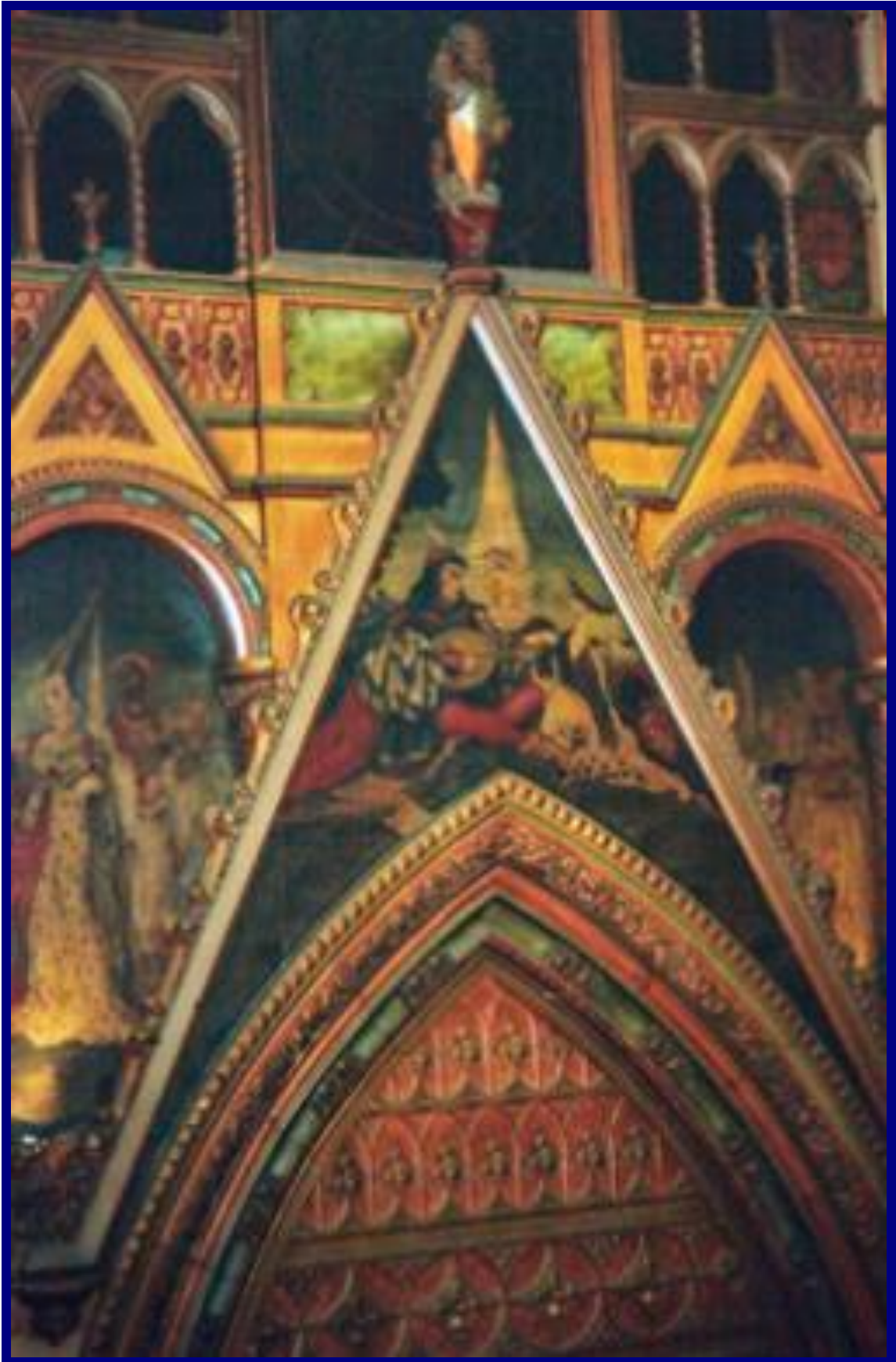
<15>

CARVED LION RAMPANT WITH SHIELD



<16>

PAINTING TROUBADOUR AND LADY



<17>

AUDITORIUM PAINTINGS



AUDITORIUM WALL PAINTINGS



PAINTING MEDIEVAL MUSICIAN



REFERENCES AND FURTHER READING



GRANADA THEATRE TOOTING

CTA Cinema Theatre Association

- 1936 *Modern Cinemas*, The Architectural Press, London.
- 1969 *The Picture Palace*, Dennis Sharp, Hugh Evelyn, London.
- 1974 *Picture Palace: A Social History*, Audrey Field, Gentry Books, London.
- 1981 *Cathedrals of the Movies*, David Atwell, Architectural Press, London.
- 1996 *Cinemas in Britain*, Richard Gray, Lund Humphries, London.
- 1998 *The Granada Theatres*, Allen Eyles, CTA, London.
- 1999 *Picture Palaces*, English Heritage, London.
- 2004 *Cinemas & Theatres of Wandsworth & Battersea*, Patrick Loobey, Tempus, Stroud.
- 2008 *Suburban London Cinemas*, Gary Wharton, Sutton Publishing, Stroud.
- 2022 *Cinemas & Theatres, South London*, Brian Roberts (E-Book), CIBSE Heritage Group.