



*The Floodlit Art Deco Richfield Building, Los Angeles, 1928, by Morgan, Walls & Clements
Replaced in 1972 by the Arco Twin Towers. LA, Lost & Found, Sam Hall Kaplan, 1987*



*Butterfly Theatre,
Milwaukee, 1916
[Ticket to Paradise,
John Margolies & Emily
Gwathmey, 1991]*



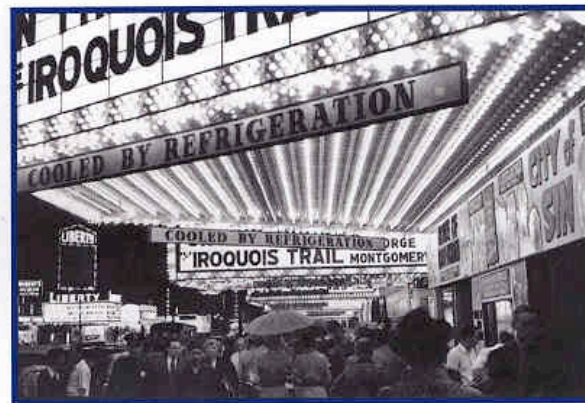
*Tribune Tower, Chicago,
Howells & Hood, 1925
[A History of Postcards,
Martin Willoughby, 1994]*



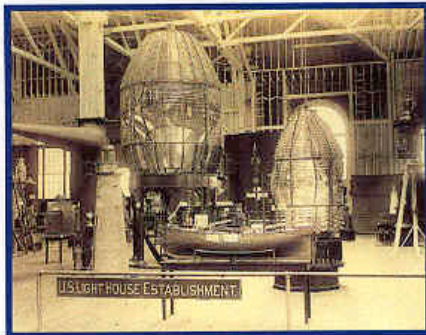
*Design for Max Reinhardt
Theatre, New York,
Josef Urban, 1929
[Wiener Werkstätte, 1994]*



*The National Radiator Building (Ideal House), London, 1928
Designed by Raymond M Hood & Gordon Jeeves
[Art Deco Architecture, Patricia Bayer, 1992]*



*Times Square, New York, 1948
[New York, Michael Marqusee, 1988]*



Lighthouse exhibit at Chicago World's Fair, 1893
Left: hyper-radiant lens
Right: first-order Fresnel lens
[Lighthouses, F Ross Holland, 1995]



The Dunes & Oasis Casino, Las Vegas, 1983
[Viva Las Vegas, Alan Hess, 1993]



Glasgow School of Art, 1897-1907
Designed by Charles Rennie Mackintosh
[Building Services Heritage, B M Roberts, 2003]



Salon Carousel, Kaatsheuvel, Holland
[Fairground Art, G Weedon & R Ward, 1985]



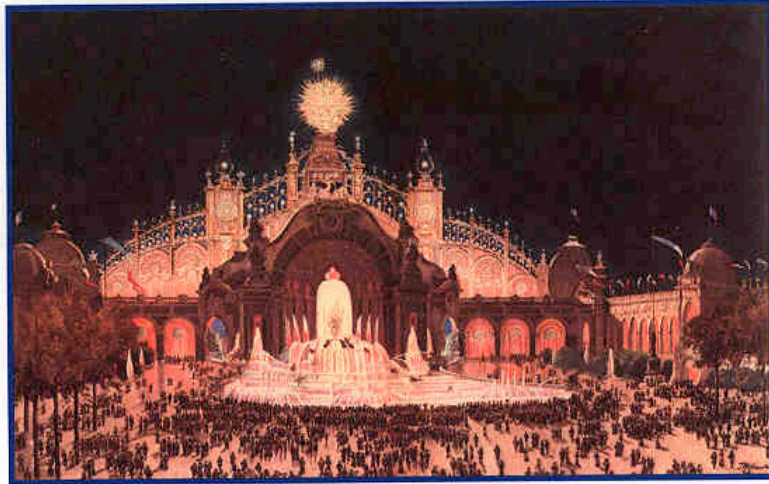
Shell-Mex House, Embankment, London, 1930s
[The Pageant of the Lamp, c.1960]



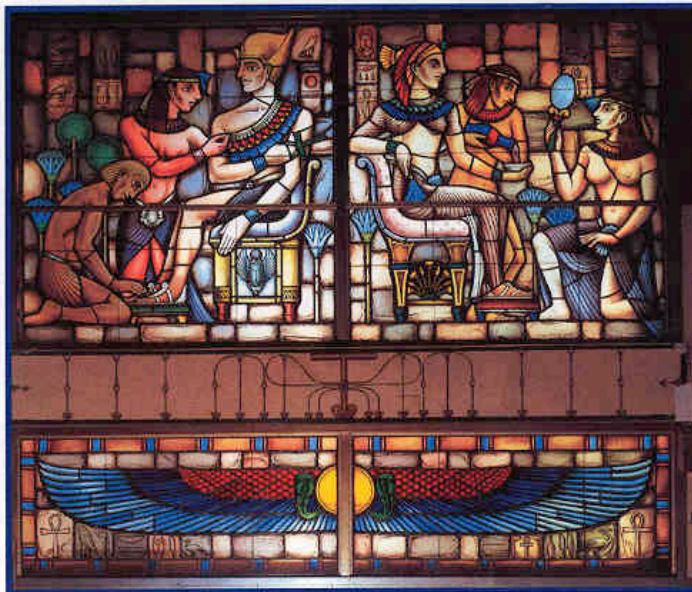
Piccadilly Circus, London, 1952 postcard
[The Postcard Century, Tom Phillips, 2000]



The Rex Cinema, Paris in 1992, built 1932
[Paris: An Architectural History, Anthony Sutcliffe, 1993]



The Chateau d'Eau with the Palais de l'Electricite behind at the Paris Exposition of 1900 [The Great Exhibitions, John Allwood, 1977]



*Illuminated decorative panel at Sid Grauman's Egyptian Theatre, Hollywood, 1922
Architects: Meyer & Holler [The Last Remaining Seats, 1997]*



*The Garrick Theatre, London, Charing Cross Road, London, 1889
Now with lighting bars across the balcony fronts
Architect Walter Emden with C J Phipps. [Scene/Unseen, English Heritage, 2003]
[Photograph National Monuments Record, AA020204]*



*Silver entrance, Park Lane Hotel, London, 1927
[In the Deco Style]*



*Dress boxes, King's Theatre,
Edinburgh, 1906
[Victorian & Edwardian Theatres,
Victor Glasstone, 1975]*



*Bullocks Wilshire department store, Los Angeles, 1929
[LA, Lost & Found, Sam Hall Kaplan, 1987]*



*V & A Museum, London, 1909
Gasolier, now electric
[CIBSE Heritage Group]*



Daily Express, London, 1939. [In the Deco Style]



*New Victoria Cinema, London,
1930 [Cinemas in Britain,
Richard Gray, 1996]*



Computer room, USA, 1955 [The Legend of Honeywell, 1995]



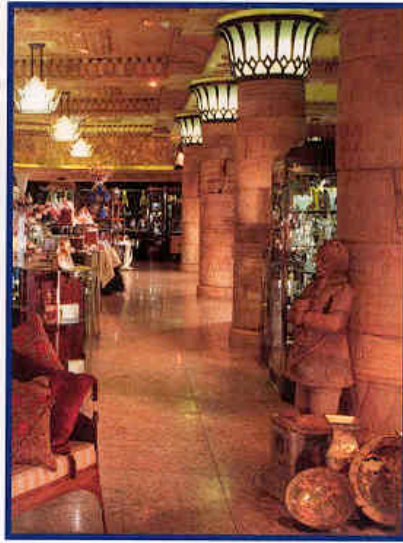
Shell Centre, London, 1962 [International Lighting Review, XIII, 6, 1962]



Sainsbury's Crystal Palace, 1983 [The Best Butter in the World, Bridget Williams, 1994]



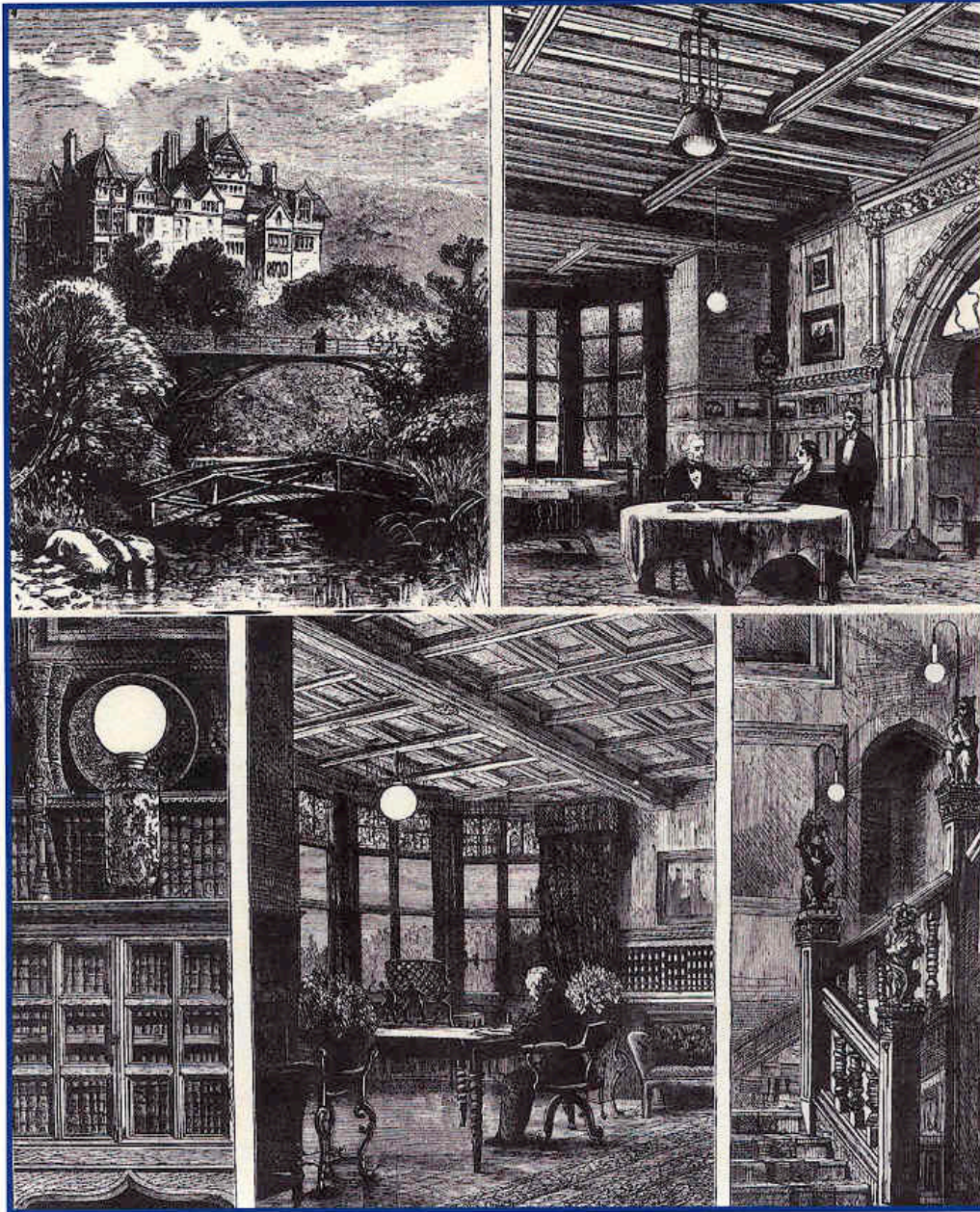
*Portsmouth Head Post Office, 1979
[Engineering into the Eighties, Drake & Scull]*



*The Egyptian Halls, Harrods, London, 1991
[Harrods: A Palace In Knightsbridge,
Tim Dale, 1995]*



Unilever House, London, 1984 [In the Art Deco Style]



Electric Lighting by the Swan System at Sir William Armstrong's Residence, Cragside.

1. Cragside
2. The Dining Room
3. The Library
4. The Library Bay Window
5. The Staircase

[The Graphic, 2 April, 1881]



SOCIETA ANONIMA PER LA
INCANDESCENZA
A GAS

BREVETTO AVER

SEDE SOCIALE BRUXELLES
SEDE AMM^{VA} ROMA 21 S. NICOLO DA TOLENTINO

GVARDARSI DALLE CONTRAFFAZIONI

ESEGUITO NELL'ISTITUTO CARTOGRAFICO ITALIANO - ROMA