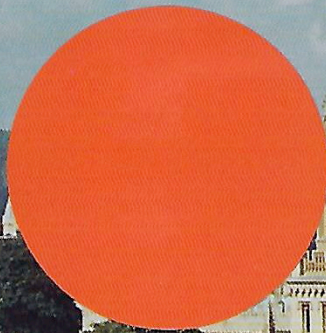




By appointment to  
Her Majesty the Queen  
Heating and Ventilating Engineers  
Fred G Alden (Heating) Ltd  
Oxford



# alden

**HEATING AND VENTILATING ENGINEERS**

**OXFORD**

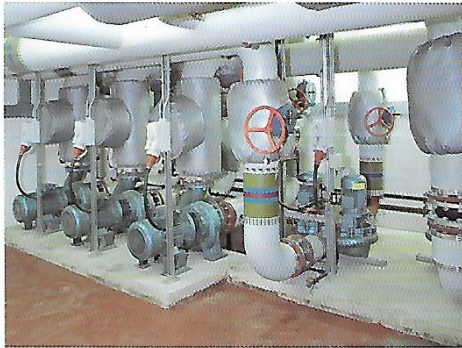


Fred G. Alden (Heating) Ltd, was established 85 years ago by Frederick George Alden. The company built a reputation for complete country house installations, becoming one of the first in the country to utilize welded pipework.

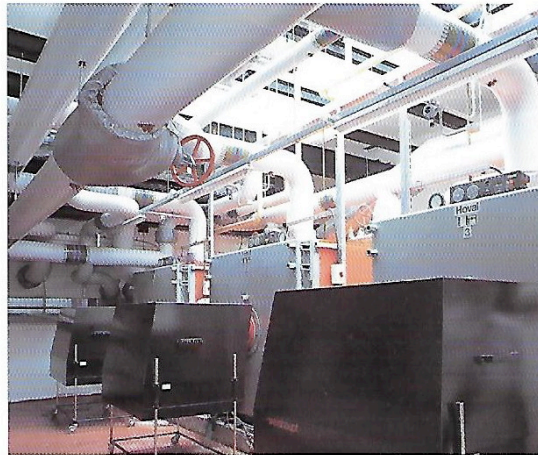
Throughout the 1930's, Alden's made great strides in the area of air-conditioning as well as central heating, "environmental engineering" as it became known.

At the outbreak of war in 1939, Aldens became heavily involved in Britain's war effort, turning over the workforce to the needs of the nation.

In 1943 however, Fred Alden was appointed officially as advisor to Oxford University on all heating matters. This led to much work for the company, particularly when the new Bodleian Library was commissioned.



Oxford University Science Area Pump Room.



Oxford University Science Area No. 1 Boiler Room.

Following the war, Alden's experience with the universities paid great dividends. The Government's interest in education meant that this became a considerable growth area for the company.

During the 1950's much work was done on contracts for the Government, and the refurbishment at the London Guildhall.



The new prosperity of the 60's brought contracts in the commercial sector, particularly office blocks and retail outlets. In the 70's and early 80's the company was very much involved in the Hospital expansion programme. The 90's include work within the Pharmaceutical research and manufacturing industry.

In 1997 Fred G. Alden (Heating) Ltd, were granted a Royal Warrant of appointment into the place and quality of Heating and Ventilating Engineers to Her Majesty the Queen.

The company today is quite rightly proud of its long and varied history.



Eton College.



Charterhouse.

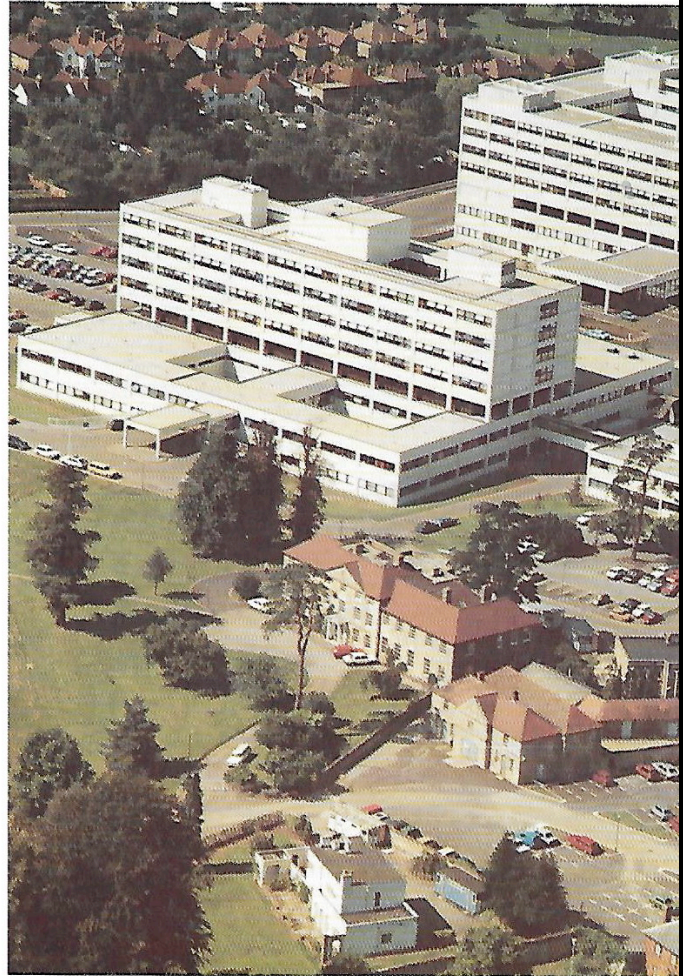
Many of the workforce of over 120 have been with the company for a long time and stand by the same philosophies of quality and value upon which the reputation of the business was originally founded.

Everyone connected with Aldens is proud of this reputation and each has their own very important role to play. From the senior management, through the experienced and highly skilled field operatives, to the equally experienced and important administration staff, the satisfaction of a job well done is the ultimate aim.





Janssen-Cilag Ltd.



Oxford University Press.

Our work, whether heating, air-conditioning or plumbing, is recognised as being of the very highest quality and our service as being reliable in both our timing and our cost.

Flexibility is the key to our success.

Our design staff are fully qualified and experienced in all aspects of the installation of various systems. This enables us to offer a comprehensive design and installation package.

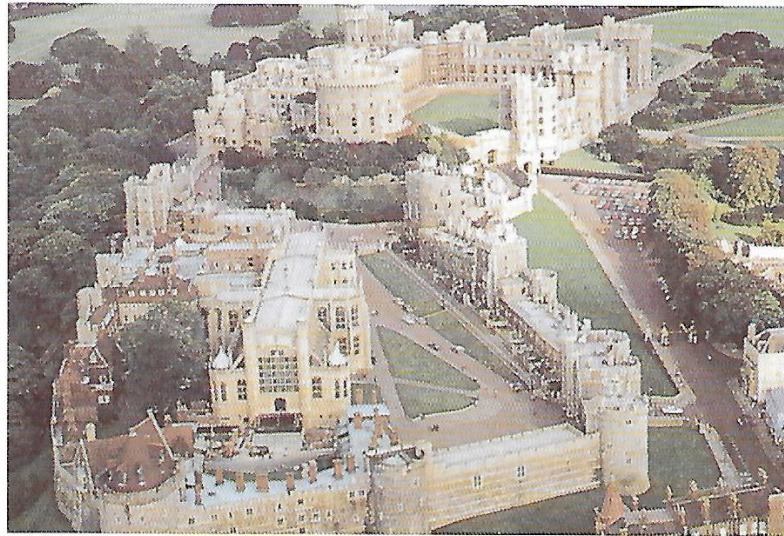




The John Radcliffe Hospital, Oxford.



Wornsey.



Windsor Castle.

We work closely with many leading firms of architects and consulting engineers, acting as the mechanical contractor. Over the years we have also worked extremely successfully in a consortium with other building disciplines.

No matter how the contract is to be undertaken, it is always done with a total commitment to teamwork. This ensures that the work progresses on time and to budget, without compromising quality.



Our work today follows the same varied pattern as it has throughout the history of the company.

From completely new installations at such places as *THE JOHN RADCLIFFE HOSPITAL, OXFORD UNIVERSITY PRESS* and *JANSSEN-CILAG*, to upgrading systems at *WINDSOR CASTLE, ETON COLLEGE, ST. EDWARDS SCHOOL, CHARTERHOUSE* and various *OXFORD UNIVERSITY SITES* - our application and commitment to quality ensure that we satisfy all of the criteria established at the outset of the contract.

Our clients include Private Estates, Schools, Colleges, Hospitals, Pharmaceutical Companies, Property Developers and Local Authorities.



St. John's College, Oxford.

In recent years we have expanded our Service and Maintenance department and offer a complete planned maintenance programme for all building mechanical plant.

Aldens office and workshop is situated in the University city of Oxford. Convenient to the motorway network which gives immediate access to the whole of the south of England.



**Below are some of the contracts and establishments at which  
F.G. Alden (Heating) Ltd. have worked in recent years.**

---

● **HOSPITALS**

Bio Medical Unit, John Radcliffe Hospital  
Cardio Thoracic Unit, John Radcliffe Hospital  
Day Care Unit, Horton General Hospital  
Institute of Molecular Medicine, John Radcliffe Hospital  
IVF Unit, John Radcliffe Hospital  
Magnetic Resonance Imager Unit, John Radcliffe Hospital  
Oncology & Transplant Units, Churchill Hospital  
Orthotics Department, Nuffield Orthopaedic Hospital  
Post Mortem Suite, John Radcliffe Hospital  
Therapeutic Antibodies Centre, Churchill Hospital  
Wellcome Laboratory, Warneford Hospital

● **LEISURE**

Ascot Racecourse, Pavilion, Restaurant, Tryon & Lawn Bars  
Charterhouse Sports Complex  
National Farmers Union Sports Pavilion  
Royal Society of Arts  
The Garrick Club  
The Swan Theatre, High Wycombe  
The Theatre, Chipping Norton  
Wantage Leisure Centre  
Warwick Castle  
Windsor Leisure Pool Phase II

● **PRIVATE RESIDENCES**

Barcote Manor  
Barton Abbey  
Bletchingdon Park  
Castle Hill, Englefield Green  
Great Purston Manor  
Hawling Manor  
Polesdon House  
Sutton Place  
Wormsley Estate

● **NATIONAL TRUST**

Cannon's Ashby  
Chastleton House  
Upton House  
Waddesdon Manor  
West Wycombe Park

● **COMMERCIAL**

Blackwell Scientific Publications  
Britannia Airways, Luton  
Burmah Castrol, Swindon  
Castrol Pangbourne  
Esso Research  
Hewland Engineering  
London Library  
M & G Reinsurance, Cheltenham  
Milton Park, Didcot  
National Radiographical Protection Board, Harwell  
Oxford Asymmetry  
Oxford University Press  
Richards Computer Products, Didcot

● **PHARMACEUTICAL RESEARCH**

British Biotechnology  
Bush Boake Allen  
Janssen-Cilag Ltd  
Firmenich (UK) Ltd  
Roche Products, Furturlon Suite  
Yamanouchi Research Institute

● **SCHOOLS**

Abingdon School  
Bradfield College  
Caterham School  
Charterhouse  
Cooper School, Bicester  
Ealing Tertiary College  
East Hampstead Park School, Bracknell  
Eton  
King Edward VI School, Stratford-upon-Avon  
Magdalen College School  
Oxford High School for Girls  
Pinewood School  
Reigate Grammar School  
St. Edward's School, Oxford  
Summerfield School  
The Dragon School  
Tudor Hall School  
Wellington College, Bracknell  
Winchester House

● **GOVERNMENT PROPERTIES**

Duke of Gloucester Barracks, South Cerney  
H.M. Prison Bullingdon  
H.P. Prison Coldingley  
Kiwi Barracks Motor Vehicle Unit, Bulford  
R.A.F. Brize Norton  
R.A.F. High Wycombe Barrack Block  
R.A.F. High Wycombe Dental Unit  
R.A.F. Lynham Refuel Bay

● **ROYAL HOUSEHOLD**

Clarence House  
Kensington Palace  
Marlborough House Mews  
St. James' Palace  
Windsor Castle

● **UNIVERSITY**

All Souls College  
Balliol College  
Christchurch  
Exeter College  
Manchester College  
Jesus College  
Lady Margaret Hall  
Lincoln College  
Oxford Brookes  
St. Anne's College  
St. Catherine's College  
St. John's College  
Somerville College  
The Queens College  
Trinity College  
Wadham College  
Dept. of Plant Sciences & Glycobiology  
Oxford University No. 1 Boiler House  
Oxford University Computing Laboratory  
Oxford University Dept. of Earth Sciences  
Oxford University Dept. of Human Anatomy  
Oxford University Dept. of Physiology  
Oxford University Dyson Perrins Laboratory  
Oxford University Inorganic Chemistry  
Oxford University New Chemistry Laboratory  
Oxford University Old Pharmacology



**Certification to BS EN ISO 9001 for Quality Assurance  
in the design, procurement, installation, and testing  
of Mechanical Engineering Building Services.**





# alden HEATING

HEATING AND VENTILATING ENGINEERS

Fred G. Alden (Heating) Ltd.

6 Aristotle Lane, Kingston Road, Oxford OX2 6TS

Tel: Oxford (01865) 554321 Fax: (01865) 310126

