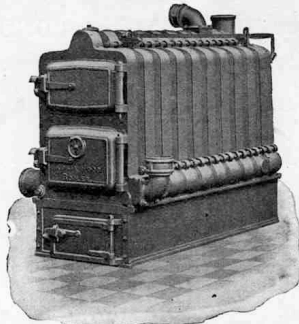
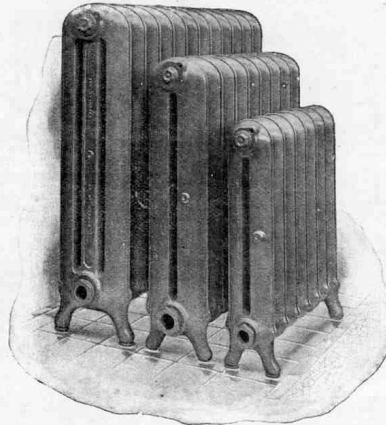


**CIBSE HERITAGE GROUP
ADVERTISEMENTS
For Building Services Engineering
BOILERS
In alphabetical order B-H**

BEESTON BOILERS & RADIATORS.



The "Robin Hood" Boiler
(The most economical Boiler extant).



The "Princess" Radiator.

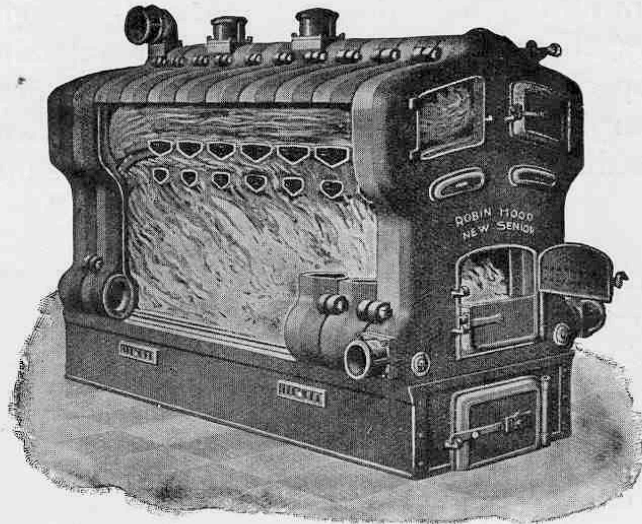
The Beeston Foundry Co., Ltd., Beeston, Notts.

(xix.)

BB 2

1904 Beeston Foundry, Beeston (Heating by Hot Water etc)

BEESTON
ROBIN HOOD
BOILERS



HAVE STOOD THE TEST OF TIME

Large corrugated fire pot for banking up. Large firing doors. Wide flues, easily cleaned. SENIOR and MAJOR patterns have perforated fire bricks in stand, which admit heated air above the fire bars, thus giving better combustion, more heat, less smoke and clinker. Equally efficient with oil, gas or solid fuel and easily converted. Very suitable for automatic stokers.

**ROBIN HOOD BOILERS are made to last
Thousands have seen 25 years' service**

PLEASE WRITE FOR CATALOGUE

THE BEESTON BOILER CO. LTD.
BEESTON, NOTTS

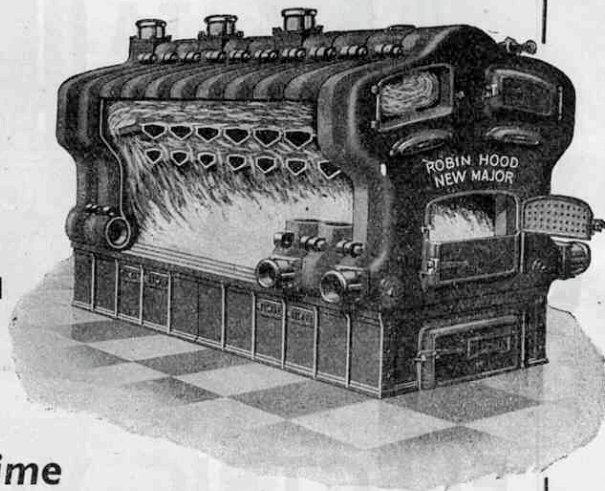
MAKERS OF BEESTON RADIATORS AND BEESTON DOMESTIC BOILERS.

1938 Beeston Boiler, Beeston (JIHVE)

BEESTON MAJOR ROBIN HOOD BOILER

EFFICIENCY
WITH
ECONOMY

SIZES RANGE FROM
673,000 TO
1,862,000 B.T.U.s.



The Test of Time

Copy of letter received from customer, May 14th, 1941.

"I visited a customer's premises yesterday which have been badly damaged in a recent Air Raid.

We put their apparatus in 34 years ago and same was working as well as ever right up to the end, and your "MONA" Boiler was in as good a condition as when it was new, and during the 34 years they have only had two renewals of firebars. No other repairs."

WRITE FOR LATEST PARTICULARS

**THE BEESTON BOILER CO., LTD.,
BEESTON, NOTTS.**

TELEPHONE :
BEESTON 54271 (4 lines)

TELEGRAMS :
"FOUNDRY BEESTON NOTTS"

1942 Beeston Boiler, Beeston (JIHVE)

BINNS & SPEIGHT, Ltd.,

Crown Boiler Works, BRADFORD, Yorks.



ELEVATION.

The "CITY DOMESTIC" BOILER.

SPECIALLY ADAPTED FOR "HARD" WATER.

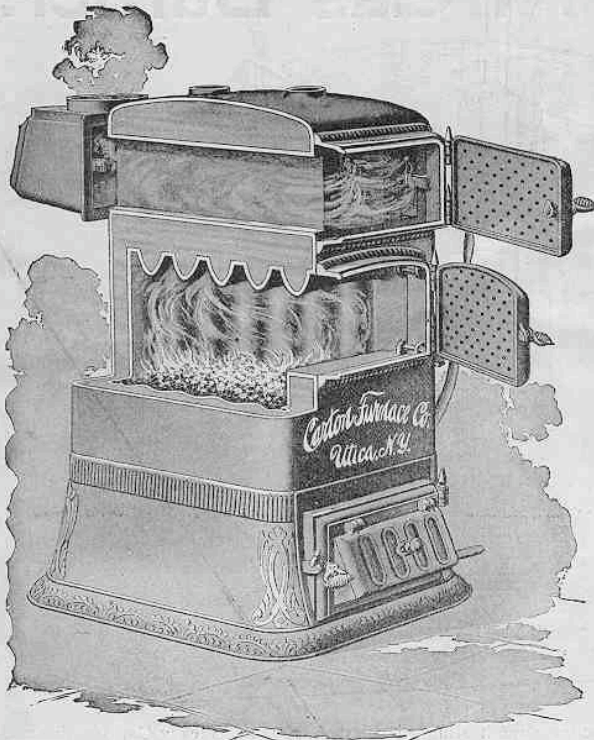
(xxiv.)

1904 Binns & Speight, Bradford (Heating by Hot Water etc)

CARTON

"B" Series Boiler

For WATER and STEAM.



Notice the

CROWN SHEET

with large

FIRE SURFACE,

a feature of this Heater.

Made in 2 PIECES with

LOCK NUT Nipple

Connections.

All Vertical Circulation.

Send for our GOLDEN JUBILEE
Anniversary BOILER CATALOGUE,

1847-1897,

If interested in Hot Air Furnaces and Combination Heaters—we make a most complete line—and you should send for our New Furnace Catalogue and Prices.

CARTON FURNACE CO.,

Makers of Heating Apparatus for the past 50 Years,

1897 Carton Furnace, Utica (The Metal Worker)

WM. GRAHAM & SONS,

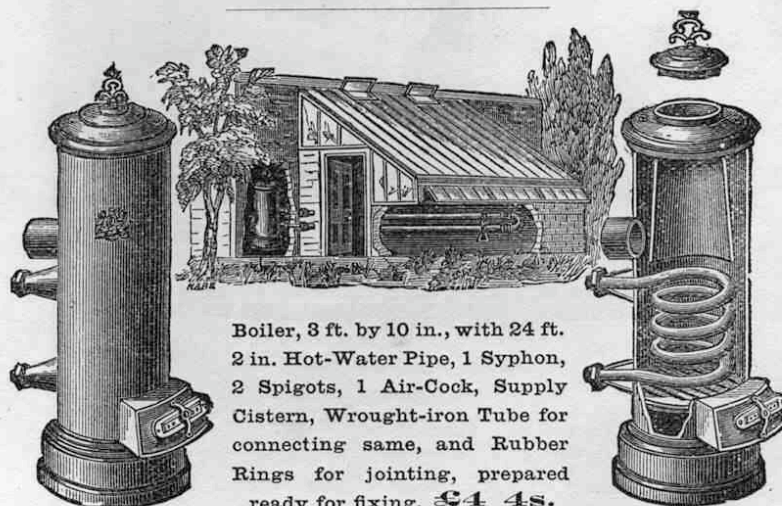
Trig Lane, Castle Yard, & 35 Upper Thames St.

Telegraphic Address: "BAYNARD," LONDON. LONDON, E.C.

HOT-WATER ENGINEERS AND FITTERS.

BOILERS, PIPES, TUBES, COILS,
COIL CASES WITH IRON AND MARBLE TOPS,
AND HOT-WATER FITTINGS.

Ventilating Gearing for Greenhouses.



Boiler, 3 ft. by 10 in., with 24 ft.
2 in. Hot-Water Pipe, 1 Syphon,
2 Spigots, 1 Air-Cock, Supply
Cistern, Wrought-iron Tube for
connecting same, and Rubber
Rings for jointing, prepared
ready for fixing, £4 4s.

ASTON TUBE WORKS, ASTON, near BIRMINGHAM.

Telegraphic Address: "PLUME," BIRMINGHAM.

TUBES AND FITTINGS FOR GAS, STEAM, WATER AND HEATING PURPOSES.

Tubes Orders over £2 nett value DELIVERED FREE to any
Railway Station in England.

EVERY TUBE TESTED before leaving the Works.

1897 Wm Graham, London (Hood on Warming Buildings)

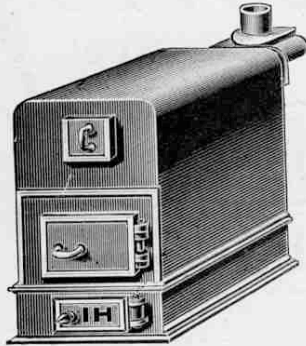
Low Pressure Hot Water Heating.

THE "HUMBER" BOILER.

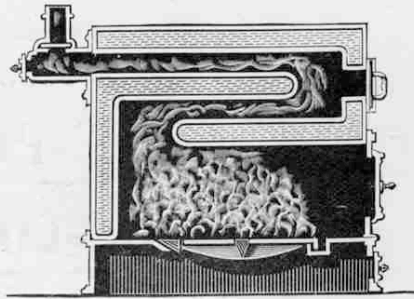
A WROUGHT IRON BOILER FITTED TO A STAND WITH FURNACE DOORS & BARS COMPLETE.

No Brickwork Required. Effective. Economical.

A Perfect Heater.



Elevation.



Section.

PRICE LIST, exclusive of Sockets.

No.	SIZES.					Outside Diameter of Smoke Flue.	Actual Heating Power 4-in Pipe	PRICE					
	Long	Inside Arch.		Including Stand				1/8-in. Plate.	3/8-in. Plate.				
		Wide.	High.	Wide.	High.				£	s.	d.		
1	Inch. 30	Inch. 16	Inch. 16	Inch. 22	Inch. 43	Inch. 7	Feet. 650	£	s.	d.	25	0	0
2	36	18	18	24	45	7	820	26	0	0	29	5	0
3	42	18	18	24	45	7	930	30	0	0	34	0	0
4	48	18	18	24	45	7	1050	35	0	0	39	10	0
5	48	21	21	27	51	7	1130	40	0	0	45	10	0
6	54	21	21	27	51	7	1350	47	0	0	52	17	6
7	60	24	21	30	51	7	1600	55	0	0	62	10	0

Inventors and Sole Makers:—

GRAHAM & FLEMING,

HALIFAX, England.

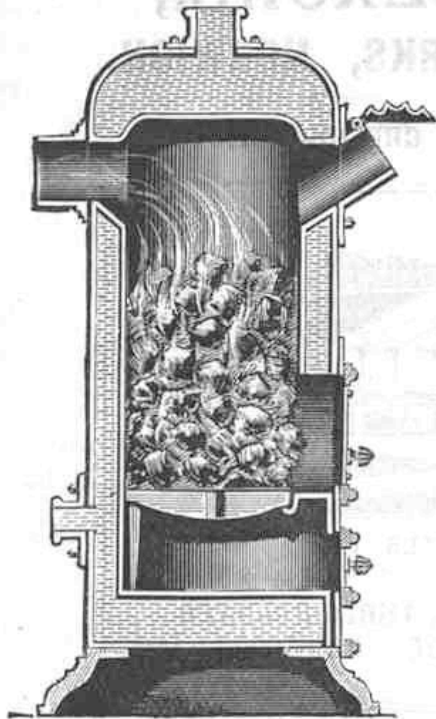
Supplied to the Trade only. Complete Lists on application.

(iii.)

AA 2

1904 Graham & Fleming, Halifax (Heating by Hot Water etc)

ESTABLISHED 1854.



Dome Top Boiler
with water-way base.

V

GRAHAM AND FLEMING

(Successors to S. T. Crook's Exors.)

INVENTORS & MAKERS of
WELDED BOILERS

for Low Pressure Heating,
RIVETTED BOILERS, VALVES &c.,

PREMIER WORKS, HALIFAX,
ENGLAND.

Complete Catalogue Free on application

Boilers quoted for and made to customers' own sketches

Telegrams:—'GRAHAM, FLEMING,' Halifax.

Telephone No. 39.

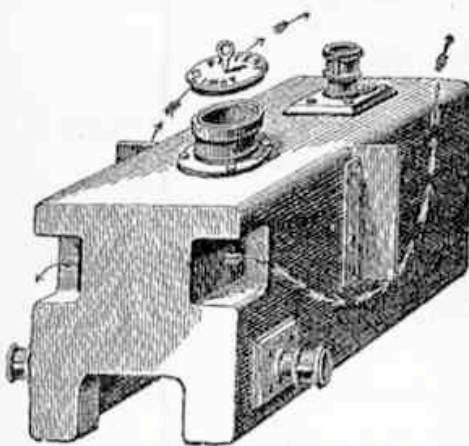
1894 Graham & Fleming, Halifax (Heating by Hot Water)

HARTLEY & SUGDEN, LTD., HALIFAX.

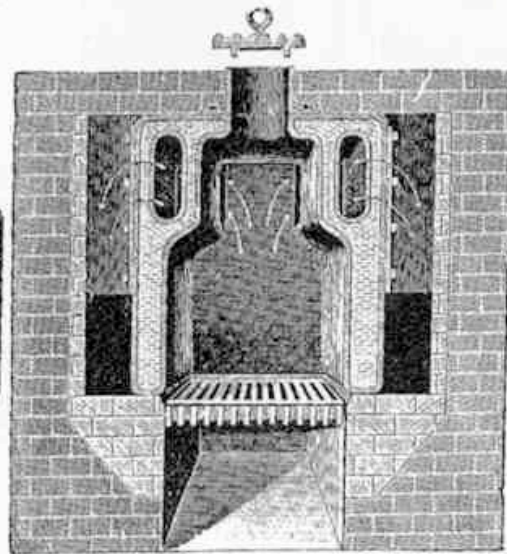
WROUGHT-IRON & STEEL
WELDED AND RIVETTED BOILERS,
OF EVERY DESCRIPTION FOR

Hot-Water Heating Apparatus, Steam Heating, &c.
PATENT

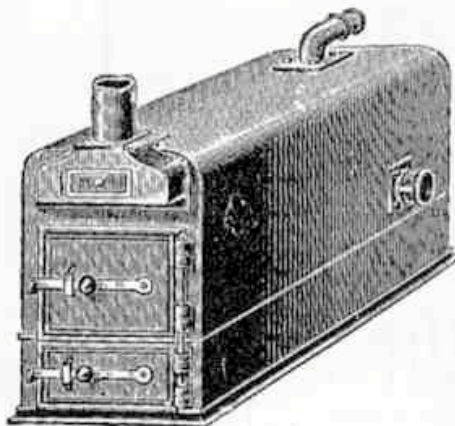
"CLIMAX" BOILER.



ELEVATION

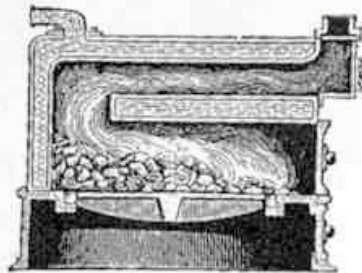


CROSS SECTION.



ELEVATION.

NEW INDEPENDENT "CHATSWORTH" BOILER.



SECTION.

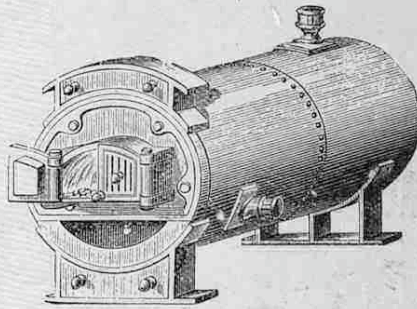
NEW ILLUSTRATED CATALOGUE ON APPLICATION.

1894 Hartley & Sugden, Halifax (Heating by Hot Water)

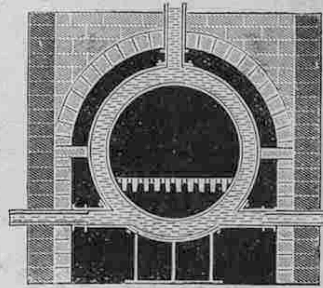
HARTLEY & SUGDEN, LTD.
HALIFAX, ENGLAND.

WROUGHT IRON AND STEEL
WELDED AND RIVETED BOILERS,
OF EVERY DESCRIPTION, FOR
HOT-WATER AND STEAM HEATING APPARATUS.

CORNISH "TRENTHAM" BOILER.



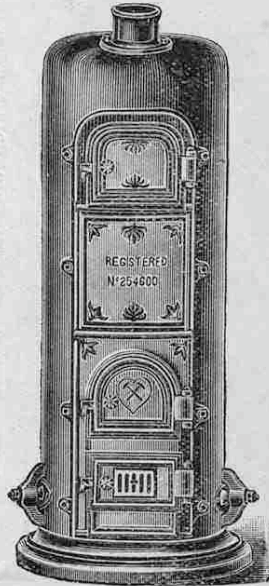
ELEVATION.



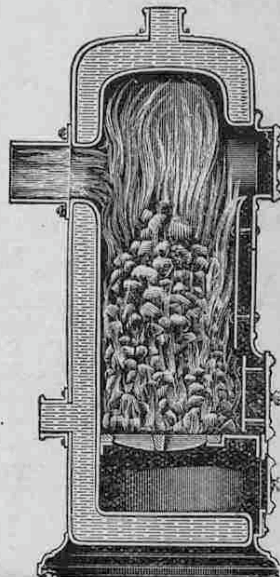
CROSS SECTION.

NEW REGISTERED DESIGN
INDEPENDENT DOME TOP BOILER, with Waterway Bottom.

No. 3e.



vi



1897 Hartley & Sugden, Halifax (Hood on Warming Buildings)