

**CIBSE HERITAGE GROUP
ADVERTISEMENTS
For Building Services Engineering
STOVES
In alphabetical order**



**“BEAVERS”
THE BEST.**

ADAPTED FOR ALL
TERRITORY AND
ALL FUEL.

“No pent up Utica contracts
our powers,
“But the whole boundless con-
tinent is ours.”

**THE DANVILLE
STOVE & MFG. CO.**

DANVILLE,
PA.



107 N. 2d Street, PHILADELPHIA, PA.

284 Pearl Street, New York.

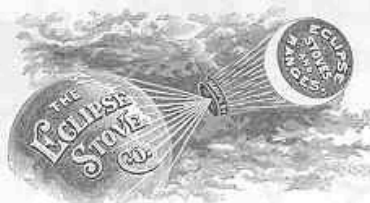
122 S. Clinton Street, CHICAGO, ILL.

954 Penn Avenue, Pittsburg, Pa.

1897 Danville Stove & Mfg, Danville (The Metal Worker)

Mars Eclipse.

✻
THE
QUALITY
IS
RIGHT.
✻



✻
THE
PRICE
IS
RIGHT.
✻

Junior Oak.

FIVE (5) SIZES—TWO (2) STYLES.



The *MARS* is one of the *new* Eclipses.
Our *New Catalogue, No. 15* (now in the press), showing the Eclipse Line complete with the extensive and attractive additions which have been made for 1897, will be furnished upon application.

Send in your name if you are interested in a money saving, money making line of Stoves and Ranges.

We have just issued a new catalogue, No. 14, showing

The Triumph Eclipse Steel Range.

YOU SHOULD SEE IT.

The Eclipse Stove Co.,

MANSFIELD, OHIO.

1897 Eclipse Stove, Mansfield (The Metal Worker)

MAPLE Clermonts



Front Feed Maple Clermont; also has top feed under swing cover.

THE
FINEST
AND
BEST
EXAMPLES
OF THE
TAMALE
TYPE.

They are handsomely designed and perfectly built stoves. They are *real* stoves and their appointments and conveniences are far beyond the ideas of the original Tamale Man.

A BEAUTY,
A PERFECT WORKER
AND A WINNER.

MAPLE CLERMONTS

Are built and mounted on honor. They are air-tight, perfect fire-keepers; richly ornamented, clean and perfect goods in every respect.

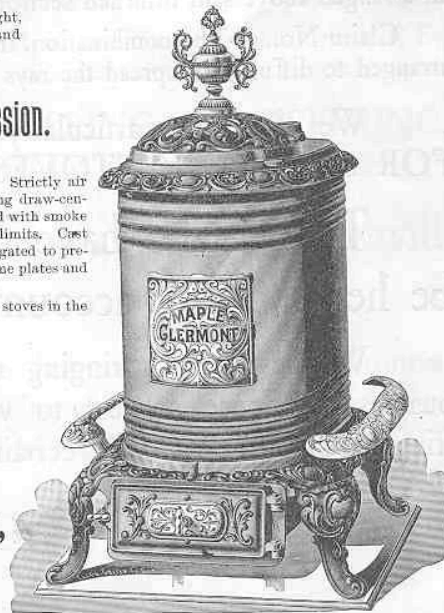
They Lead the Whole Tamale Procession.

LARGE ASH PANS. Ground doors and screw registers. Strictly air tight. Perfect fire-keepers. Shaking draw-center wood grates. Large convenient top feed. Large door feed with smoke guard. Heavy cast lining all around, extending above fire limits. Cast tops and bottoms. Extra heavy polished steel bodies corrugated to prevent buckling. Screw draft registers. Nickel foot rails, name plates and panels. Ornamental swing cover and spit urn.

These are by far the finest, handsomest and best built stoves in the market, and they are amply protected by patents.

Both styles made in four sizes, 18, 22, 24 and 28.

The Gem City
Stove Company,
DAYTON, OHIO.



1897 Gem City Stove, Dayton (The Metal Worker)

JOHN GRUNDY, HEATING APPARATUS MANUFACTURER.

ESTIMATES FREE.



SUCCESS GUARANTEED.

HEAD OFFICE:

30 DUNCAN TERRACE, CITY ROAD, LONDON, N.

SHOW ROOMS:

TORRENS STREET (Close to the Angel), ISLINGTON, N.

WEST END BRANCH:

57 WIGMORE STREET, CAVENDISH SQUARE, W.

FOUNDRY:

THE TYLDESLEY IRONWORKS, near MANCHESTER.

Telegrams: "JOHN GRUNDY, LONDON."

Proprietor and Manufacturer of

PATENT "HELIOS" and "SIRIUS" ACTUAL

SMOKE CONSUMING GRATES

WITH VISIBLE FIRES.

Patent "HESTIA" Slow and Quick Combustion.

WARMING & VENTILATING STOVES.

Winter, Warmth and Comfort.

HEATING & VENTILATING APPARATUS. GRUNDY'S SPECIALITY. PURE WARM AIR.

Upwards of One Thousand Testimonials received.

PURE WARM AIR AS SUPPLIED TO

Truro Cathedral; Londonderry Cathedral; Sherborne Abbey; Kilmore Cathedral; Stanley Cathedral, Falkland Islands; Cardiff Catholic Cathedral; the Queen's School Chapel, Eton; Cork Asylum; Leicester Asylum; and to upwards of three thousand Places of Worship; and a great number of Mansions, Houses, Hotels, Hospitals, Schools, Warehouses, Factories, Workhouses; Cork Law Courts, &c. &c.

84 BROOK STREET, GROSVENOR SQUARE, W.; December 8, 1893.

SIR WILLIAM BROADBENT encloses cheque for the "GRUNDY" HEATING APPARATUS supplied to his house, and is glad to say that it has proved very satisfactory for warming and ventilating as required. The principle of the apparatus is most excellent.
To Mr. Grundy.

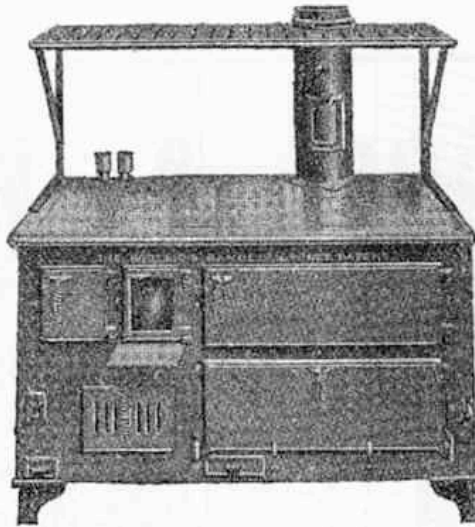
October 24, 1893; HIND HEAD HOUSE, HASLEMERE.

PROFESSOR TYNDALL writes:—DEAR SIR,—My house being so well provided with grates and flues for the generation and distribution of pure warm air, I have been thus enabled to spend my winters in England instead of on a foreign shore.—Yours very truly,
JOHN TYNDALL.

1897 John Grundy, London (Hood on Warming Buildings)

The **LONDON WARMING Co. LTD.**

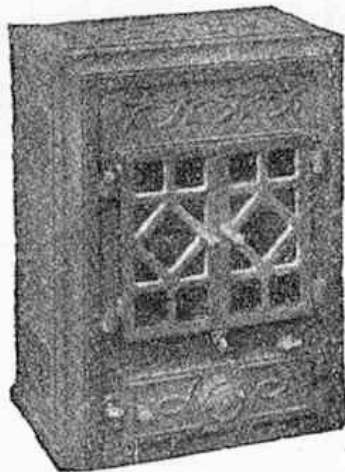
2 PERCY ST., RATHBONE PLACE, LONDON, W.1



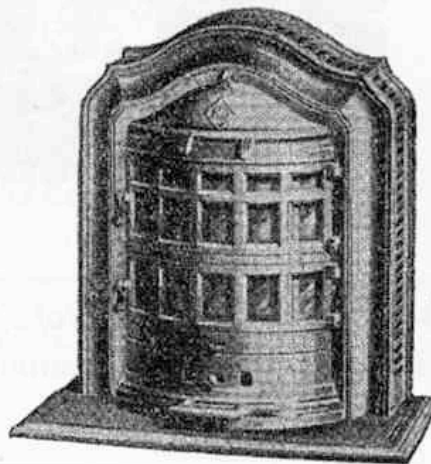
The KOOKSJOIE RANGE
11 sizes. Prices from £10 10 0



GURNEY STOVES
6 sizes. Prices from £6 10 0



OSOBRITE STOVE
Open fire or closed stove at will.
Prices from £5 11 0



DON ANTHRACITE STOVE
Heating capacity, 5,500 cu. ft.
Prices from £8 7 6

For full list of Appliances, including Anthracite Stoves,
ranging in price from £2 10 0, send for our 40-page list.
Please mention Laxton's

THE LONDON WARMING AND VENTILATING COMPANY, LTD.

105 Regent Street (The Quadrant), London, W.

ESTABLISHED 1854.

Contractors to H.M. War Office, Admiralty, Home Office, &c. &c.

A. P. FLORENCE, MANAGER.

Proprietors of the

**PATENT "JACKSON" AND "REVERTIVE"
OPEN GRATES.**

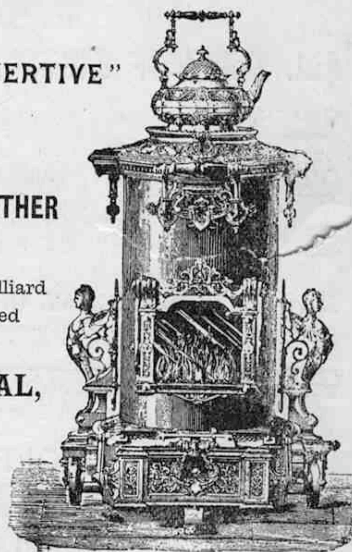
Sole Agents for

**CHOUBERSKY, "SALAMANDRE" & OTHER
CONTINUOUS BURNING STOVES,**

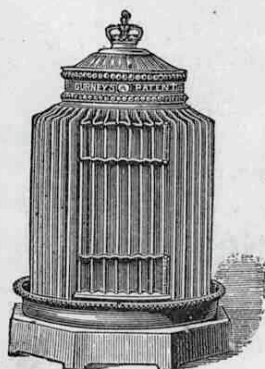
Suitable for Entrance Halls, Corridors, Billiard
Rooms, Studios, &c., and specially adapted
for burning most successfully

ANTHRACITE (Smokeless) COAL,

Effecting a saving in fuel of more
than 30 per cent., with increased heat, and
warmth under perfect control.



ILLUSTRATED CATALOGUE ON APPLICATION.



Proprietors of "**GURNEY**" Stoves for
Warming Churches, &c., as specified by leading
Architects, and as used in St. Paul's, Salis-
bury, Exeter, Gloucester, Lincoln, Llandaff
Cathedrals, York Minster, St. George's Chapel,
Windsor, &c. Twenty-two Cathedrals, and
over 10,000 Churches, Schools, Government and
other public and private buildings successfully
warmed by our system.

**ECONOMICAL, EFFICIENT,
CHEAP, DURABLE, SAFE.**

MANY PRIZE MEDALS AWARDED.

PARTICULARS AND ESTIMATES FREE.

1897 London Warming & Ventilating, London (Hood on Warming Buildings)

The Model Oak.

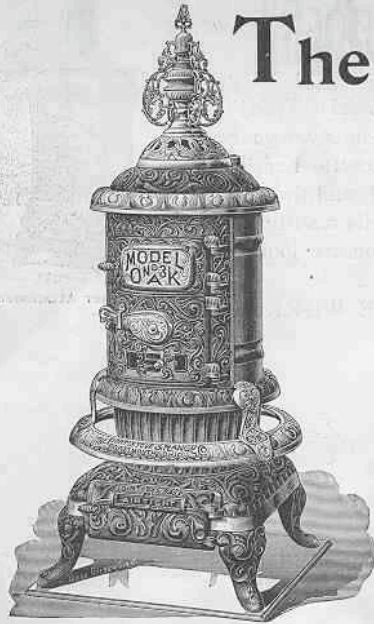
MADE IN 5 SIZES.

*It's handsome in design from top to toe,
And the best made Oak you'll ever know.*

ITS FEATURES INCLUDE:

- Jointless Base Draw Centre Grate.
- Gas Burning Register in Feed Door.
- Smoke Curtains.
- Check Registers in Pipe Collar.
- Anti-Buckling Drums.
- Nice Nickel Rings.
- Nice Nickel Plates.

We relegate that exploded humbug the **CONE CENTER GRATE** to the scrap heap, and throw away the **SCREW REGISTER** souvenir of the burgomasters of the 17th century.



Do you see the Extension on top of fire pot?

It extends up inside of steel drum, and is cast solid with the fire-pot, so it cannot twist or warp.

Do you see that Sectional Ring?

See how it fits over the flange tinned out on bottom of steel drum, which in its turn fits down on flange of fire-pot and then ring and fire pot bolted together with drum flange between them, and then bolts ALL on OUTSIDE of STOVE.

Do you see that Round Air-Tight Register lying under the stove?

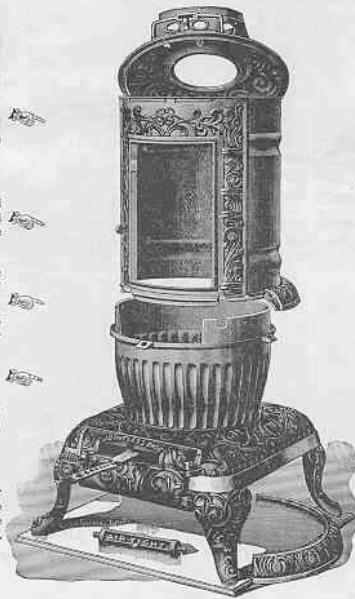
It is ground into its seat on the inside of the ash-pit door, and will remain at any degree of opening required to supply air for combustion through the opening.

Do you see the Draw Centre handle pulled out?

Do you see the point? You don't open the big ash-pit door to operate the grate. It's so simple that it's wonderful somebody didn't think of it before, but "patent applied for" ornaments it now.

You can't see under the Ash-pit:

But it is correct in size and shape, with no waste corners for ashes. The ash-pan fits it tight all around the edges and the ash-pan is larger than the grate, so it must catch all the ashes. No "ash-pan girl" is required to operate this stove.



Prices are Right.

Send for Circular, Price List and Discounts.

Portsmouth

Stove & Range Co.,

PORTSMOUTH, OHIO.

1897 Portsmouth Stove & Range, Portsmouth (The Metal Worker)



Easy to Carry,
Just Invert the Footrests.

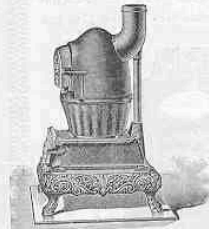
MOORE'S AIR-TIGHT HEATER

The first MOORE'S AIR-TIGHT HEATER was made by us seven years ago. It is the most successful heating stove now on the market, and the only one of the kind which sells readily and gives satisfaction. If you are looking for the best write us.

JOLIET STOVE WORKS.



Double Heater Attachment.



With Casing Removed, Showing Dust Flue.



PATENTED.



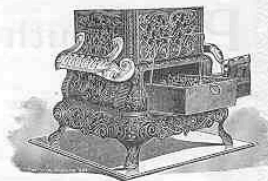
The Casing.



Air-tight Ash Pit Door and Draft Slide with Ground Joints.



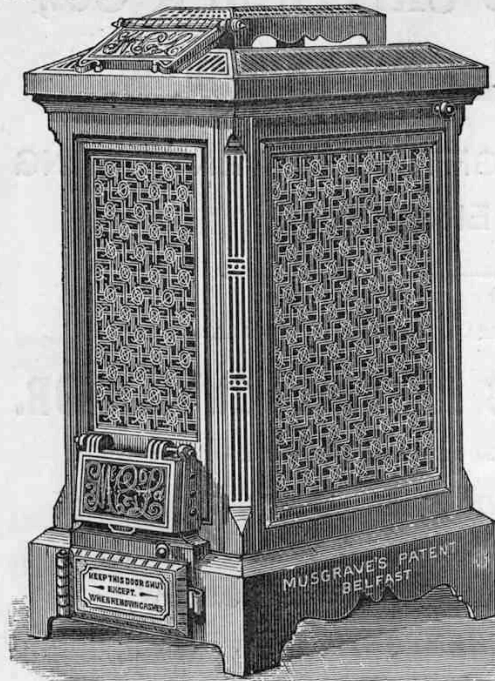
Apron in Position for Shaking or Poking the Fire.



Apron in Position for Removing the Ash Pan.

1897 Joliet Stove Works, Joliet (The Metal Worker)

MUSGRAVE'S PATENT SLOW COMBUSTION **"ULSTER" STOVES,**



FOR WARMING AND VENTILATING PUBLIC AND PRIVATE BUILDINGS OF EVERY DESCRIPTION.

FREE FROM DUST AND ALL UNPLEASANT SMELL.

EASILY FIXED, EASILY MANAGED.

WILL BURN FROM 8 TO 24 HOURS WITHOUT ATTENTION.

DELIVERED FREE TO PRINCIPAL STATIONS.

MUSGRAVE'S
PATENT
HOT-AIR
HEATING
APPARATUS.

MUSGRAVE'S IMPROVED HOT-WATER HEATING APPARATUS,
ON THE SMALL PIPE and LARGE PIPE SYSTEMS.
Success in every case guaranteed.



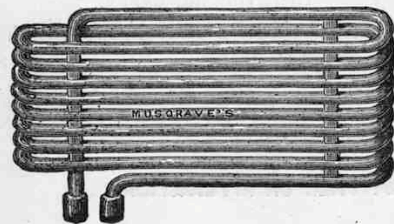
Illustrated Catalogues, Estimates, and every information free on application to—

MUSGRAVE & Co.,
LIMITED,

97, NEW BOND ST.,
LONDON, W. ;

40, DEANSGATE,
MANCHESTER ;

Ann Street, Ironworks, BELFAST ;
240, Rue de Rivoli, PARIS.



1891 Musgrave, Belfast (Hood on Warming Buildings)

Every dealer has been advised many times this year to "Hold on. Don't place orders for Oaks."

Another "World Beater" is being evolved. Same old "chestnut."

NOW...

Here is the

"World Beater."

Four hundred imitations (and nearly one hundred manufacturers) cannot stop us from selling nearly one-third the "OAKS" made in the United States every year.



It has beat them all.

It does just as represented.



It is built on honor.

Are you looking for a good specialty? Write the

Estate of P. D. BECKWITH,

DOWAGIAC, MICH.

1897 P D Beckwith, Dowagiac (The Metal Worker)