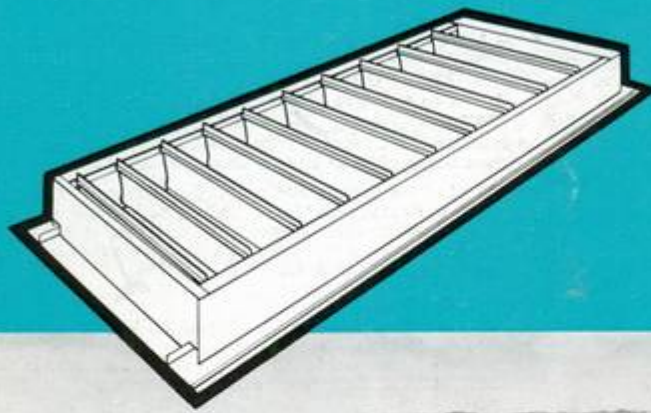


SOME COLT LITERATURE

SfB (57)

UDC 697-921-26

April 1968



CO Ventilator



Information Leaflet

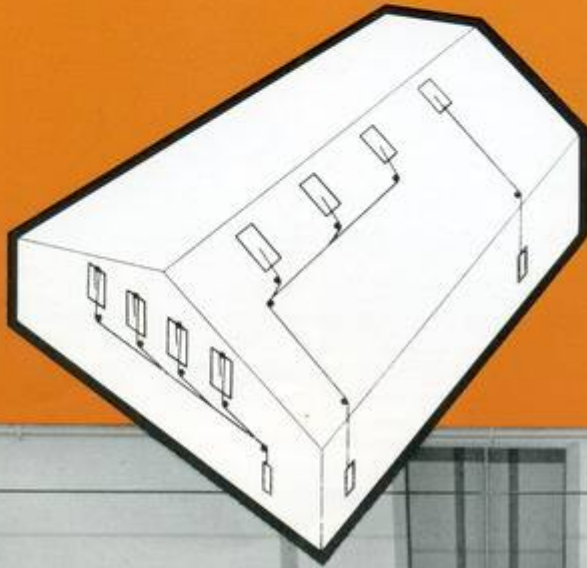
**COLT**

110

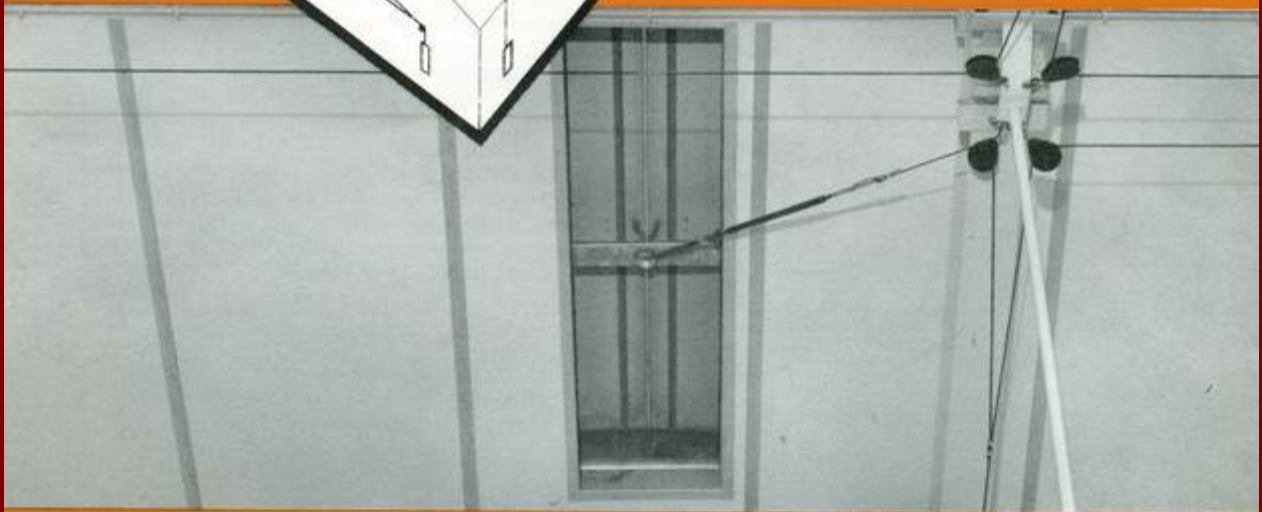
SfB (57)

UDC 621-519: 697.921

June 1963



Cable Control



Information Leaflet

COLT

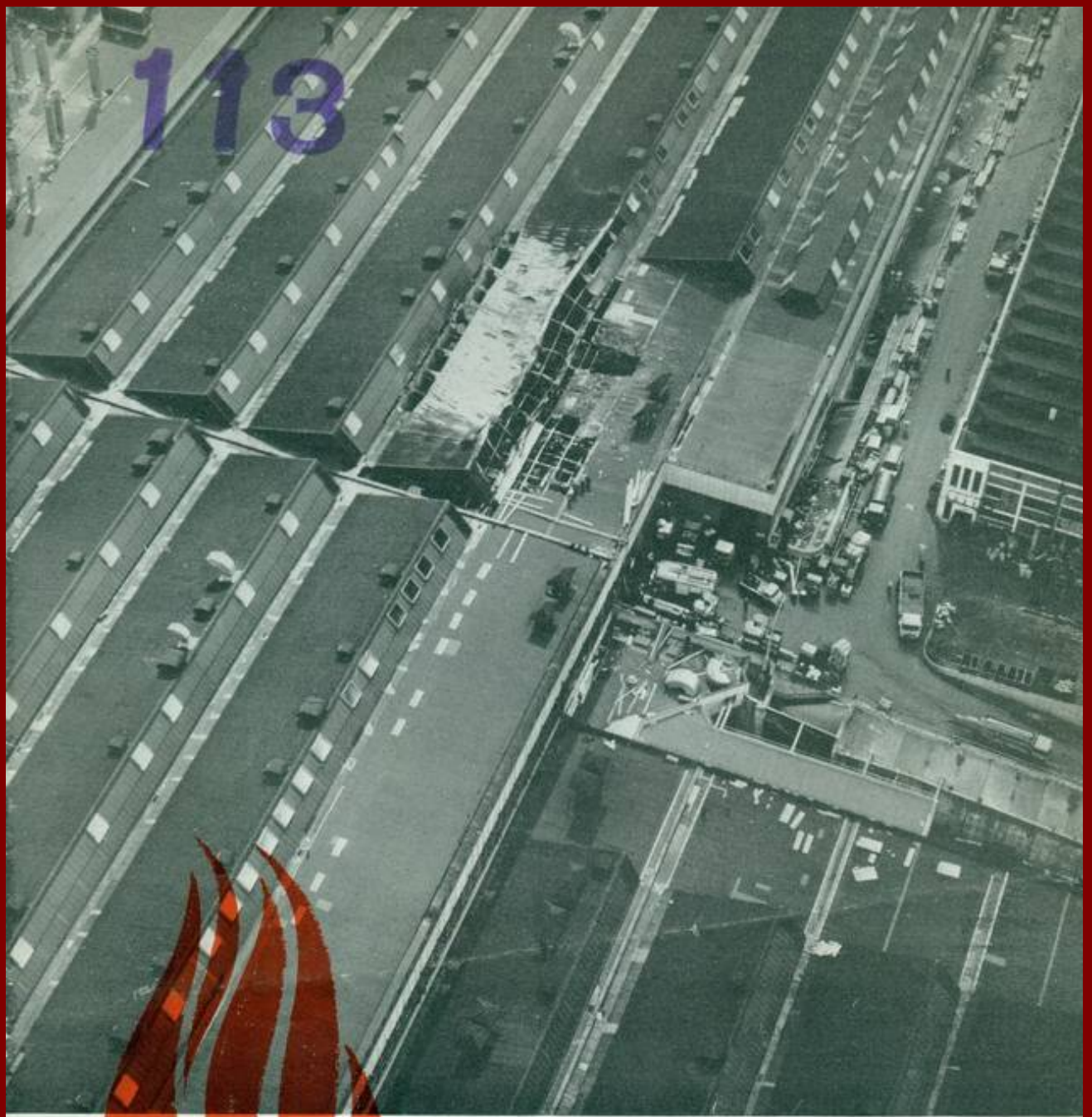
122

Typhoon Ventilator

113



113



fire ventilation in action

113

COLT

SfB (56 & 57)

UDC 658-2:628-8

April 1963

*ИДЕА ОФИС
27, БУЛВАРД "СВ. СВЕТОСЛАВ"
СОФИЯ, БУЛГАРИЯ
СЛОВЕС
ТЕЛЕФОН 2541*

**INDUSTRIAL VENTILATION
AND
HEATING SYSTEMS**

COLT

automatic
fire
ventilation

L. F. BRIDG & THOMAS PIGGOTT

GE & THOMAS PIGGOTT

127

Mr Row

595

COLT VENTILATION



THE COLT CLEAR-OPENING VENTILATOR

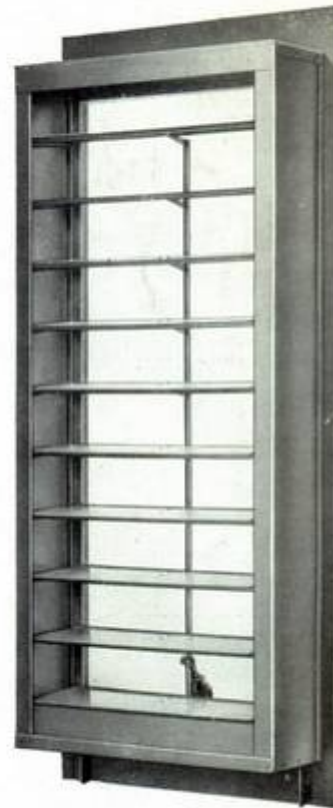
(Patent No. 600117 and Prov. Patents)

TYPES C.O. 2046, C.O. 2446, C.O. 4060, C.O. 4460, C.O. 4080 and C.O. 4480

FOR ROOF OR WALL

SPECIALLY DESIGNED FOR HOT INDUSTRIES

AFFORDS IMMEDIATE RELEASE OF CONCENTRATED PROCESS HEAT



To remove and replace part of a roof during a "hot spell" is not a practical possibility, yet this is often the cry when temperatures become unbearable. The COLT Clear-Opening Ventilator however, does, in effect, do this. Opened instantly by the operation of the control mechanism the Ventilator fulfils four distinct functions. These are:—

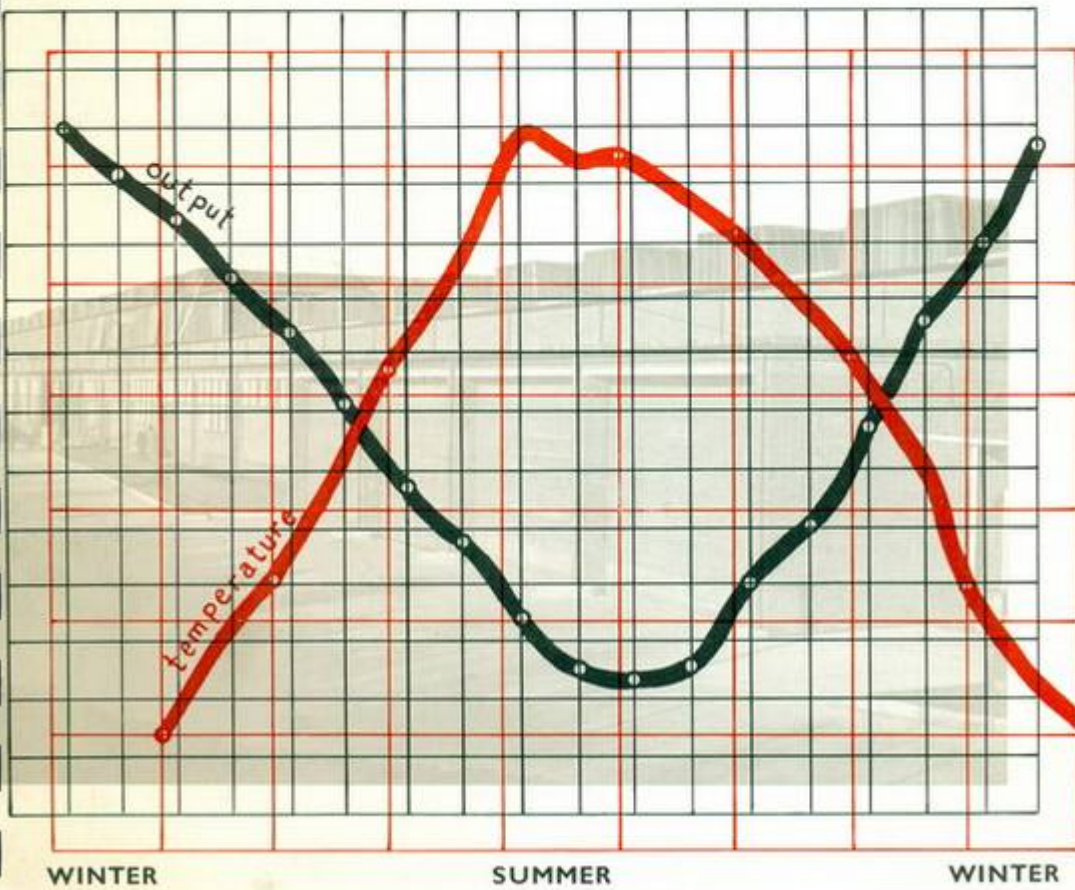
1. By virtue of its almost 100% free area it provides maximum possible passage of air for either inlet or extract ventilation dependent upon its siting.
2. The Clear-Opening provides additional natural lighting and the louvres can be adjusted to deflect sun glare when the Ventilator is fitted on the south side of a building.
3. The Clear-Opening to the sky has a marked beneficial psychological effect upon the operatives.
4. The Clear-Opening permits building and bodily heat loss by radiation to the atmosphere whereas normally this radiant heat (being of low frequency) could not pass through the building fabric.

This Ventilator, fitted singly or in batteries over "hot spots" provides a concentration of extraction, removing the heat from source before it can spread and affect the air temperature throughout the shop.

Easily fitted into roof glazing or any other form of construction, the Ventilator can be sited in cool positions or at low level in the walls to provide air inlet and careful siting can produce an uncanny degree of controlled ventilation giving balanced conditions throughout the year without operating or other costs.

113

How **SUMMER HEAT**
affects
SUMMER OUTPUT



COLT VENTILATION LTD.

113 THE COLT INFLOW UNITS

LEAFLET No. 75

Colt Ventilators are protected by one or more of the following Patents: U.K. 551198; 567801; 569013; 593887; 602983; 610934; 645813; 650372; 661775; 710740; 727817; 772015; 785218; 19576/55; 799230; 29549/57; 923/58; 15526/58; 21743/58; 34538/58; 40222/58; 2962/59, France: 930950, U.S.A.: 2617295; 2626556; 2881690; 595689; 600117, Canada: 421054; 428910; 470278; 506552; 710382; 710383, Belgium: 466190, Australia: 166533; 211311; 212537, New Zealand: 114568; 114569.

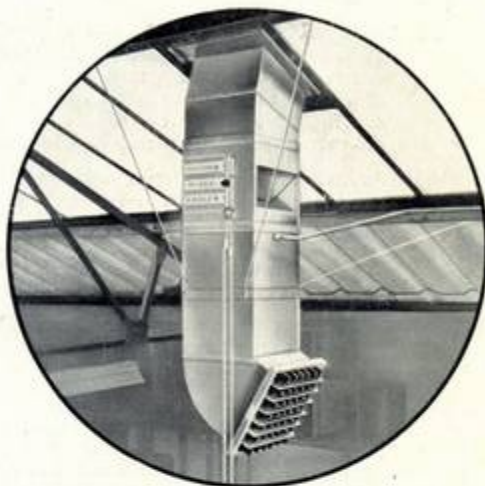
The COLT INFLOW UNITS are powered ventilators which have been designed on the unit principle and are built up from a number of component parts (as shown on pages 8, 9, 10 and 11) which can be assembled in a great variety of ways, resulting in the utmost flexibility and versatility.

Each unit is powered by either a 15" or 18" diameter *Reversible Propeller Fan* so that it can be used to provide either intake air or extraction. *Variable Speed Switchgear* enables the Ventilator to be run either at slow or fast speeds as desired. COLT A.C. motors are of squirrel cage design and the unique Colt Multi-phase, Multi-Volt A.C. Motor is specially designed for use on both single and three phase mains over a wide range of voltages namely 200-250 single phase and 346-440 3 phase. Totally-Enclosed Flameproof Motors and Switchgear (Buxton-Certificated) can also be provided where necessary. Full details of Switchgear are shown on the printed price list at the back of the Colt Ventilation Manual.

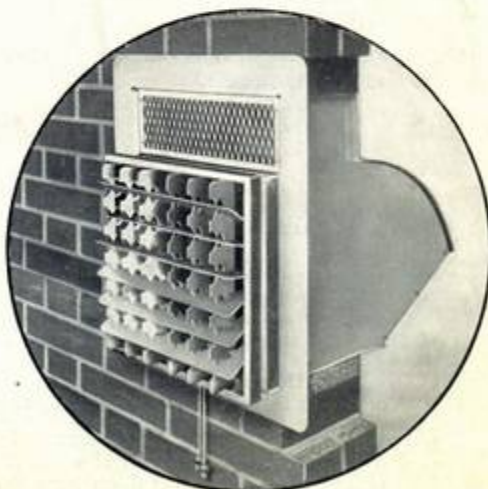
The complete standard COLT Inflow Units are all fitted with *Recirculation Dampers* for recirculating the heat within the premises. This is invaluable during the winter time providing air movement without reducing the air temperature, and by utilising waste heat from the roof space, a valuable contribution to heating the premises can be made. By varying the settings of the *Recirculation Dampers*, a mixture of cool, fresh air from outside, and warm air from inside is created; thus warmed fresh air can be provided without the cost of additional heat. Full details of the functions of the *Recirculation Gear* are shown on page 3.

A *Heater Battery* designed for use with steam or hot water heating systems, which does not interfere with summer ventilation, enables the fresh incoming air to be warmed in winter, whenever partial recirculation is not sufficient.

The *Filter Unit*, removes dust and dirt.



The Colt Roof Inflow Unit



The Colt Wall Inflow Unit



COLT

Coltpost 2007
Colt Group Limited