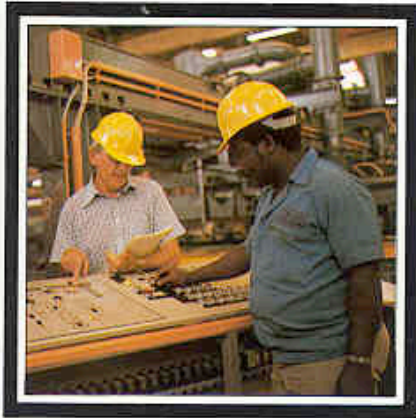


DRAKE & SCULL OVERSEAS

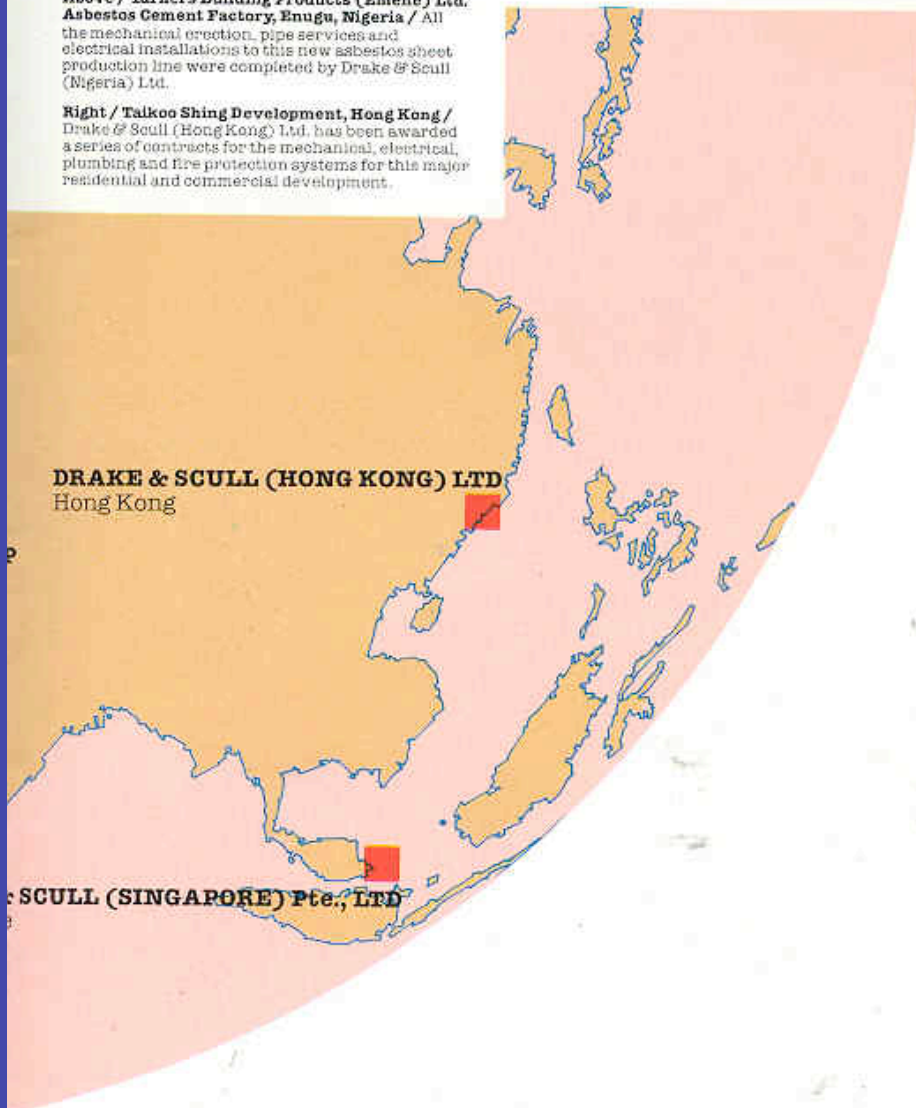


Above / Al Fajer Department Store, Dubai, U.A.E. /
The electrical contract completed by Lunar Drake & Scull (U.A.E.) comprised the installation of general lighting, standby generator systems and fire protection systems for this 19 department, two-storey department store, one of the biggest of its kind in the U.A.E.



Above / Turners Building Products (Emene) Ltd. Asbestos Cement Factory, Enugu, Nigeria / All the mechanical erection, pipe services and electrical installations to this new asbestos sheet production line were completed by Drake & Scull (Nigeria) Ltd.

Right / Talkoo Shing Development, Hong Kong / Drake & Scull (Hong Kong) Ltd. has been awarded a series of contracts for the mechanical, electrical, plumbing and fire protection systems for this major residential and commercial development.



Drake & Scull has been operating successfully in overseas countries for more than 30 years. We know how to handle their climatic, technical and commercial requirements. And how to respect their historical, cultural and political traditions.

We have worked extensively in many countries in Africa and the Middle East, and have carried out projects in the Caribbean, Europe and in Asia. We know how to plan, manage and commission complex engineering projects, often under difficult conditions in remote locations which is why our overseas clients rely heavily on the experience and resources which we have developed over the years.

The following pages show some of our Overseas projects and, of course, some of our people.

MIDDLE EAST



Above / Rashidiya Water Tank, Dubai, U.A.E. / Lunar Drake & Scull (U.A.E.) was responsible for all mechanical and electrical engineering services associated with the construction of this 12 million gallon water tank.



Top / Al Fajer Department Store, Dubai, U.A.E. / The electrical contract completed by Lunar Drake & Scull (U.A.E.) comprised the installation of general lighting, standby generator systems and fire protection systems for this 19 department, two-storey department store, one of the biggest of its kind in the U.A.E.

Above / Rashidiya Water Tank, Dubai, U.A.E. / Lunar Drake & Scull (U.A.E.) was responsible for all mechanical and electrical engineering services associated with the construction of this 12 million gallon water tank.

Bottom / C.M.C. Stadium, Dubai, U.A.E. / All air conditioning, electrical and plumbing services were completed by Lunar Drake & Scull (U.A.E.). Also included were the supply and erection of four floodlight towers which provide a high lighting intensity, designed to permit colour TV transmission.

AL NAIMI-DRAKE & SCULL LIMITED
Dammam, Saudi Arabia

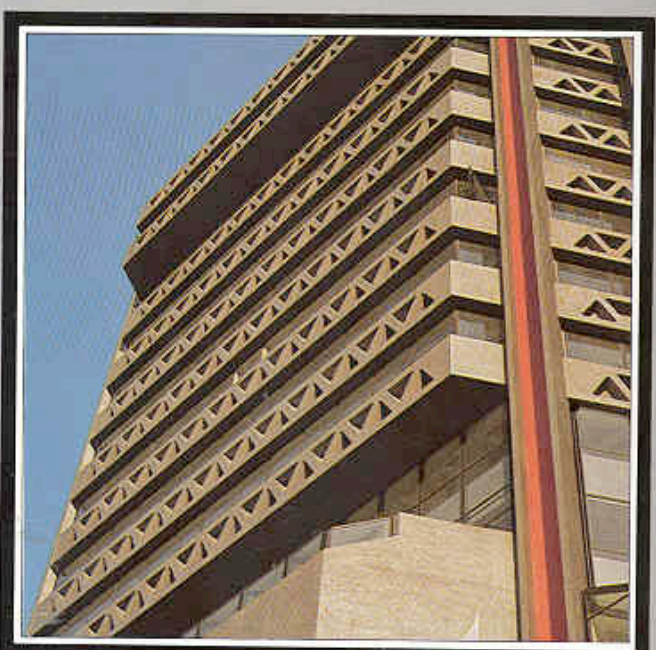
LUNAR DRAKE & SCULL (U.A.E.)
Dubai, United Arab Emirates

DRAKE & SCULL
Abu Dhabi, United Arab Emirates

DRAKE & SCULL
Riyadh, Saudi Arabia

DRAKE & SCULL ASSARAIN (L.L.C.)
Ruwi, Sultanate of Oman

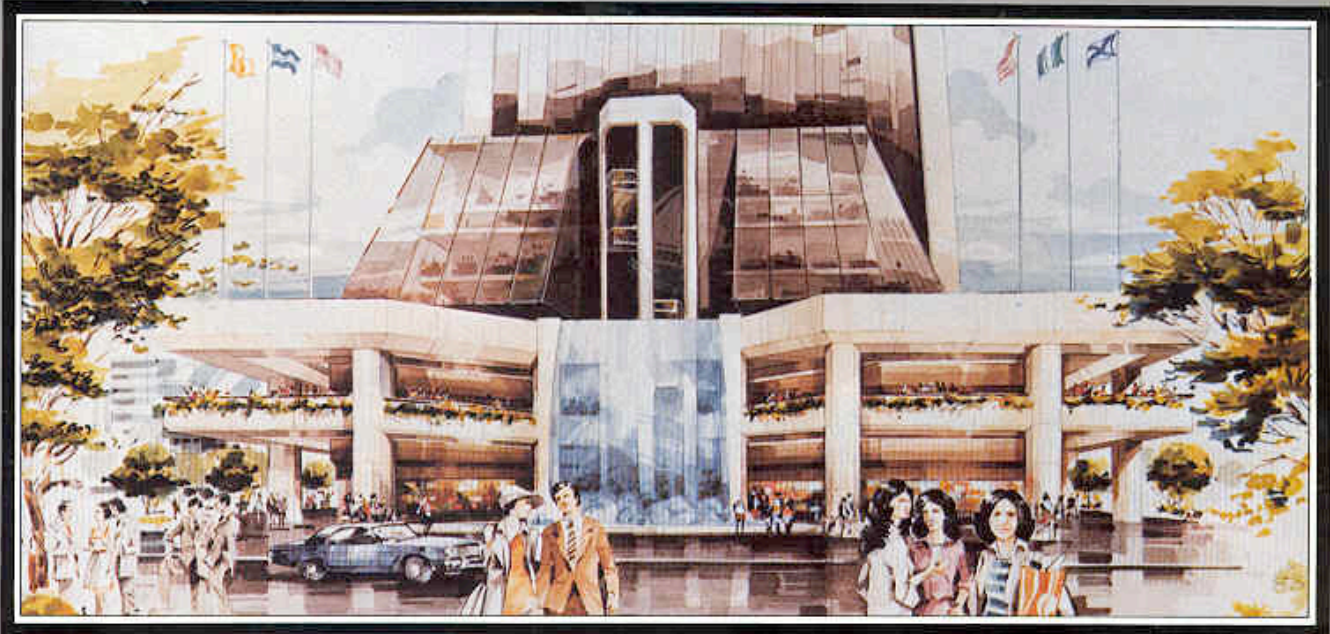
SOUTH EAST ASIA



Top / Mass Transit Railway Corporation, Administration Headquarters, Hong Kong / Drake & Scull (Hong Kong) Ltd. was awarded the multi-service contract for this new complex.

Top / Tyco Toy Factory, Hong Kong / Drake & Scull (Hong Kong) Ltd. was responsible for the design and installation of all air conditioning, specialist ventilation and electrical systems for this project.

Bottom / Arts Centre, Hong Kong / The Arts Centre comprises a 465-seat theatre, a 308 seat recital hall and studio theatre for 100 people, together with rehearsal rooms, split level exhibition gallery, restaurants and offices; Drake & Scull (Hong Kong) Ltd. was the engineering services contractor installing air conditioning, electrical, plumbing and fire protection services.

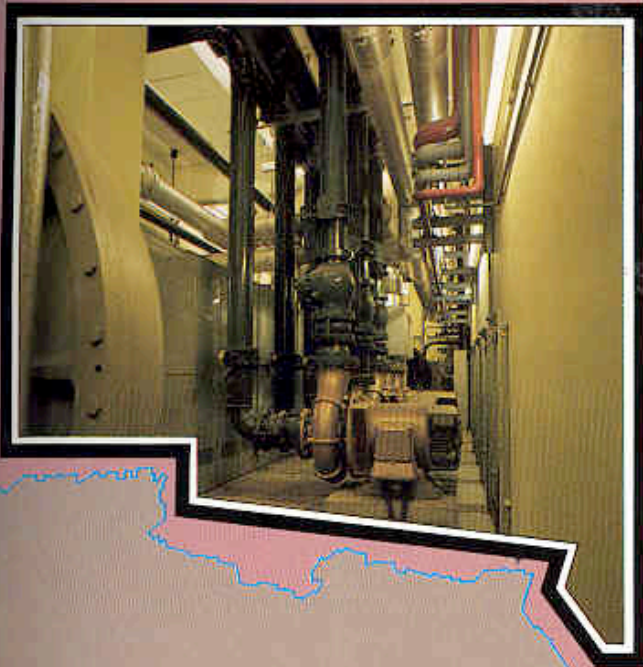


Top / Sun Hung Kai Centre, Hong Kong / Drake & Scull (Hong Kong) Ltd. is responsible for the design of all engineering services for this 50 storey tower complex.
Bottom / Sha Tin Teaching Hospital, Hong Kong / Drake & Scull (Hong Kong) Ltd. has been awarded the contract for the installation of all air conditioning, ventilation and steam plant comprising a central chilled water system, central air handling plant and air terminals. When fully completed in 1982 the hospital will have 1400 beds and serve 700,000 people in the eastern area of the New Territories.

AFRICA



Sheet Metal Shop, Nigeria



Above / Registrar General Building, Mauritius / Photos show a section of staircase and bar in the Banqueting Hall and part of the main plant room within the complex where Drake & Scull was awarded the design and installation of all mechanical, electrical, public, fire protection and air conditioning services.

DRAKE & SCULL (NIGERIA) LTD
Kaduna, Nigeria



DRAKE & SCULL (NIGERIA) LTD
Lagos, Nigeria



DRAKE & GORHAM (ZAMBIA) LTD
Ndola, Zambia

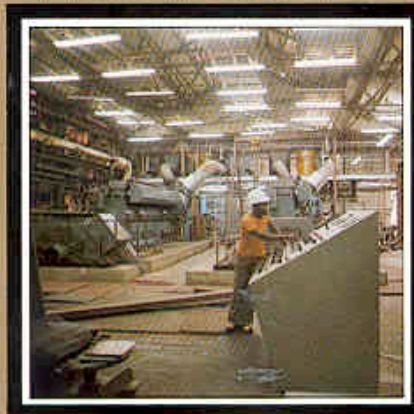
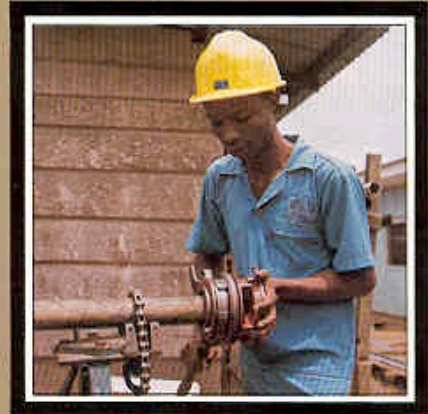


DRAKE & GORHAM (ZAMBIA) LTD
Lusaka, Zambia



DRAKE & SCULL
Dar Es Salaam, Tanzania





Top / Inner Ring Road Street Lighting, Lagos, Nigeria / Drake & Scull (Nigeria) Ltd. installed 1008 columns, 65 masts and 1918 lamps and lanterns over 13 km of double dual carriageway on the new Lagos ringroad and spur connections.

Middle & Bottom / Poultry Processing Plant, Lusaka, Zambia / Drake & Gorham (Zambia) Ltd. were the mechanical services engineers responsible for the supply of all mechanical equipment and associated pipework. The plant is designed to handle more than 1000 birds per hour and is the largest of its kind in Zambia.

Top & Middle / Eternit Sapsis Limited, Asbestos Factory, Nigeria / Drake & Scull (Nigeria) Ltd. was responsible for the electrical installation of this project comprising high voltage and low voltage switch gear, cabling, lighting and power services to manufacturing plant.

Bottom / African Timber and Plywood, Timber Production Plant, Nigeria / Drake & Scull (Nigeria) Ltd. carried out this single service electrical project comprising installation of high voltage and low voltage switch gear, cabling, lighting, power and services to manufacturing equipment, producing finished timber of all sizes from raw material.

Top & Middle / College of Science and Technology, Port Harcourt, Nigeria / Drake & Scull (Nigeria) Ltd. was responsible for the supply of all internal plumbing and electrical services to this new 14 block campus in Port Harcourt, Nigeria.

Bottom / Central Power Station, Port Harcourt, Nigeria / Drake & Scull (Nigeria) Ltd. provided the electrical service installation to this new complex for the River State Government.



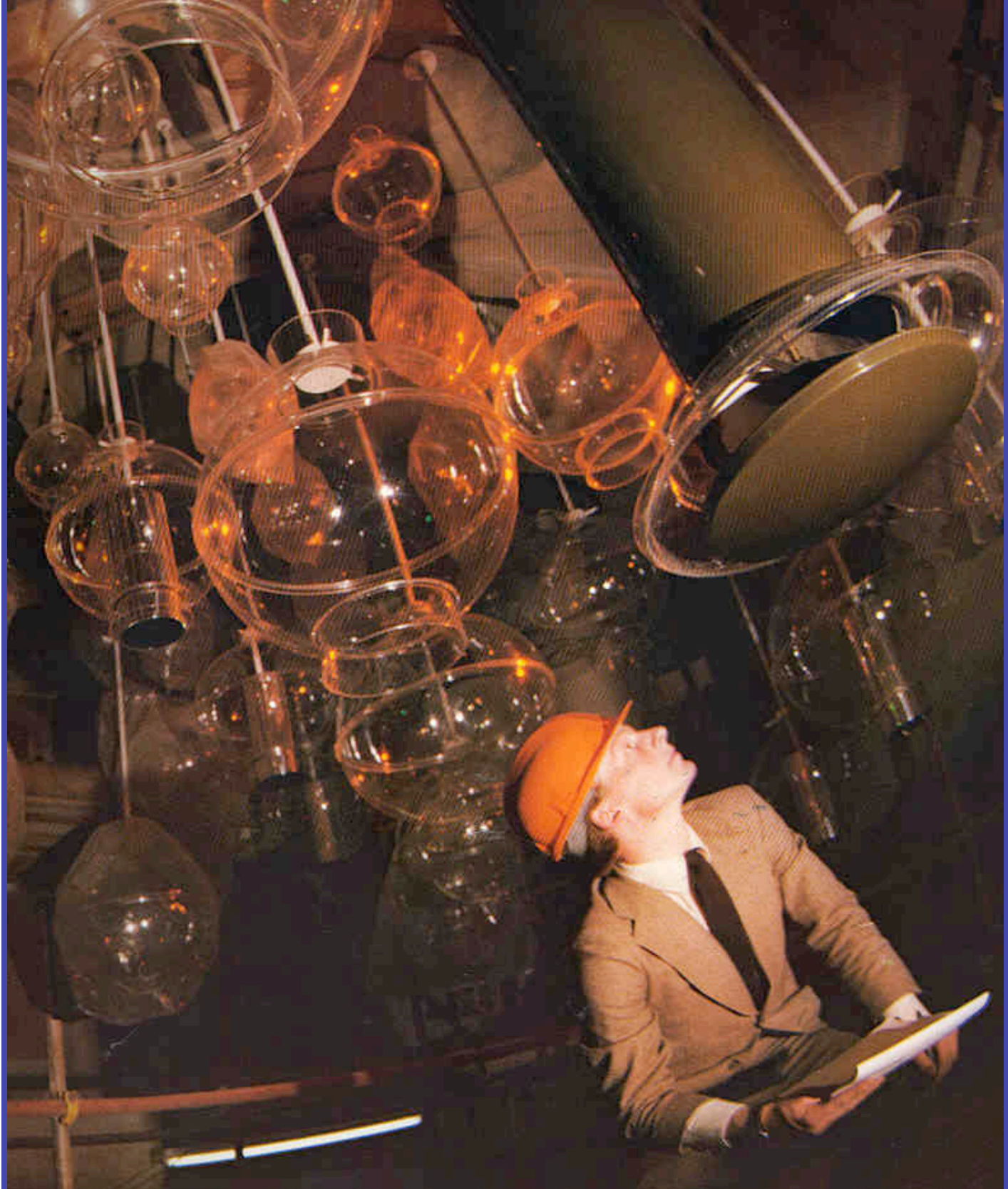
Above / Secretariat and Museum Complex, Port Harcourt, Nigeria / Drake & Scull (Nigeria) Ltd. was responsible for all electrical, mechanical, air conditioning, and plumbing services to this new complex.

Overleaf / Barbican Arts and Conference Centre, London / Drake & Scull was the electrical and mechanical services contractor for this complex construction project completed in 1988. The centre includes a large concert hall, theatre, public library, art gallery, cinema, the Guildhall School of Music and Drama, shops and restaurants. Photo shows suspended acrylic spheres (designed to be both ornate and acoustic) and ventilation droppers, one of fifty-six suspended from the concert hall roof.



Barbican Arts & Conference Centre, London

**ABU DHABI / BIRMINGHAM / BRISTOL / BURY ST EDMUNDS
CARDIFF / GARSHALTON / CHANDLERS FORD / COSHAM
CROYDON / DAMMAM / DAR ES SALAAM / DUBAI / DUNDEE
EDINBURGH / GATESHEAD / GLASGOW / HONG KONG
INVERNESS / KADUNA / LAGOS / LIVERPOOL / LONDON
LUSAKA / MANCHESTER / MILTON KEYNES / NDOLA
PLYMOUTH / RIYADH / RUWI / SALISBURY / SINGAPORE**





Photography / John Ashton, Len Dance
Typesetting / Focus Photoset Ltd.
Print / Sunderland Print Limited, England
Photoset in / "American Typewriter" / printed on / Iconorex Art 160 gm²

Designed, produced and published by:
Drake & Scull Engineering Ltd.
Marketing Services Department
Hamlyn House, Highgate Hill, London N19 5PS Tel. 01-272 0233. Telex 27265

Above / Barbican Arts and Conference Centre, London / Photo shows a lagger installing the aluminium finish to the internal lagging of the concert hall concrete beams, used as air ducts.