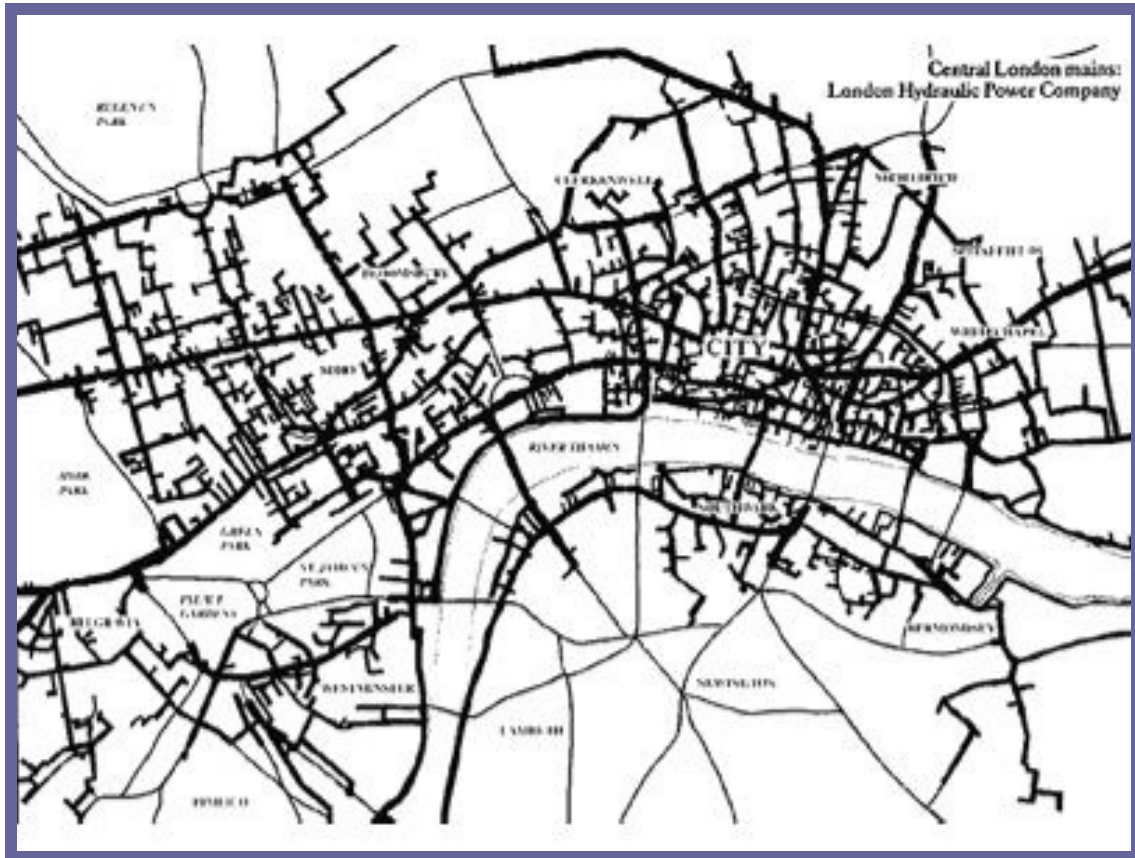


LONDON HYDRAULIC POWER COMPANY



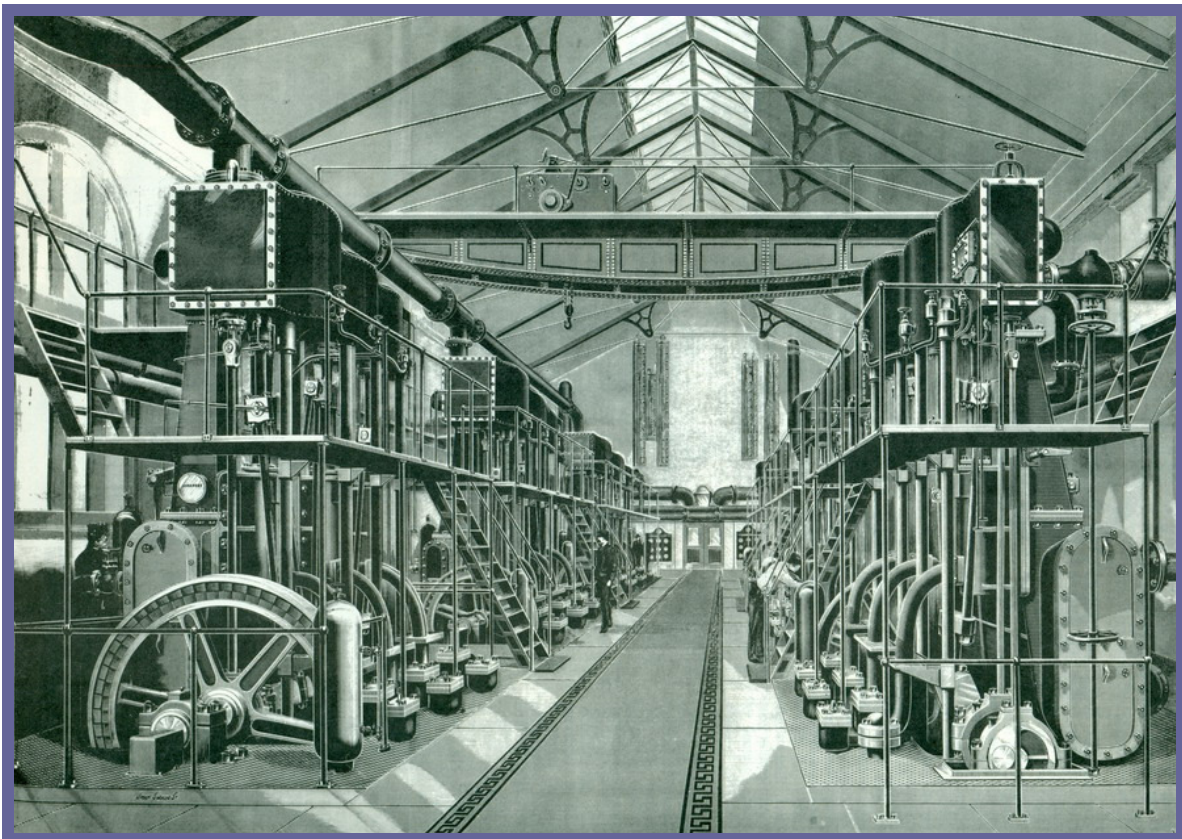
The London Hydraulic Power Company's Central London Mains

The Company was founded in 1871 and by 1927 had 184 miles of mains beneath London with pumping stations at Bessborough Gardens in Pimlico, Blackfriars Bridge, Albion Docks at Rotherhithe, Wapping Wall in the London Docks and at the City Road Basin in Islington. Water was pumped around these mains at a pressure of up to 700 pounds per square inch and used to operate cranes, lifts, theatre machinery, various presses and other equipment.

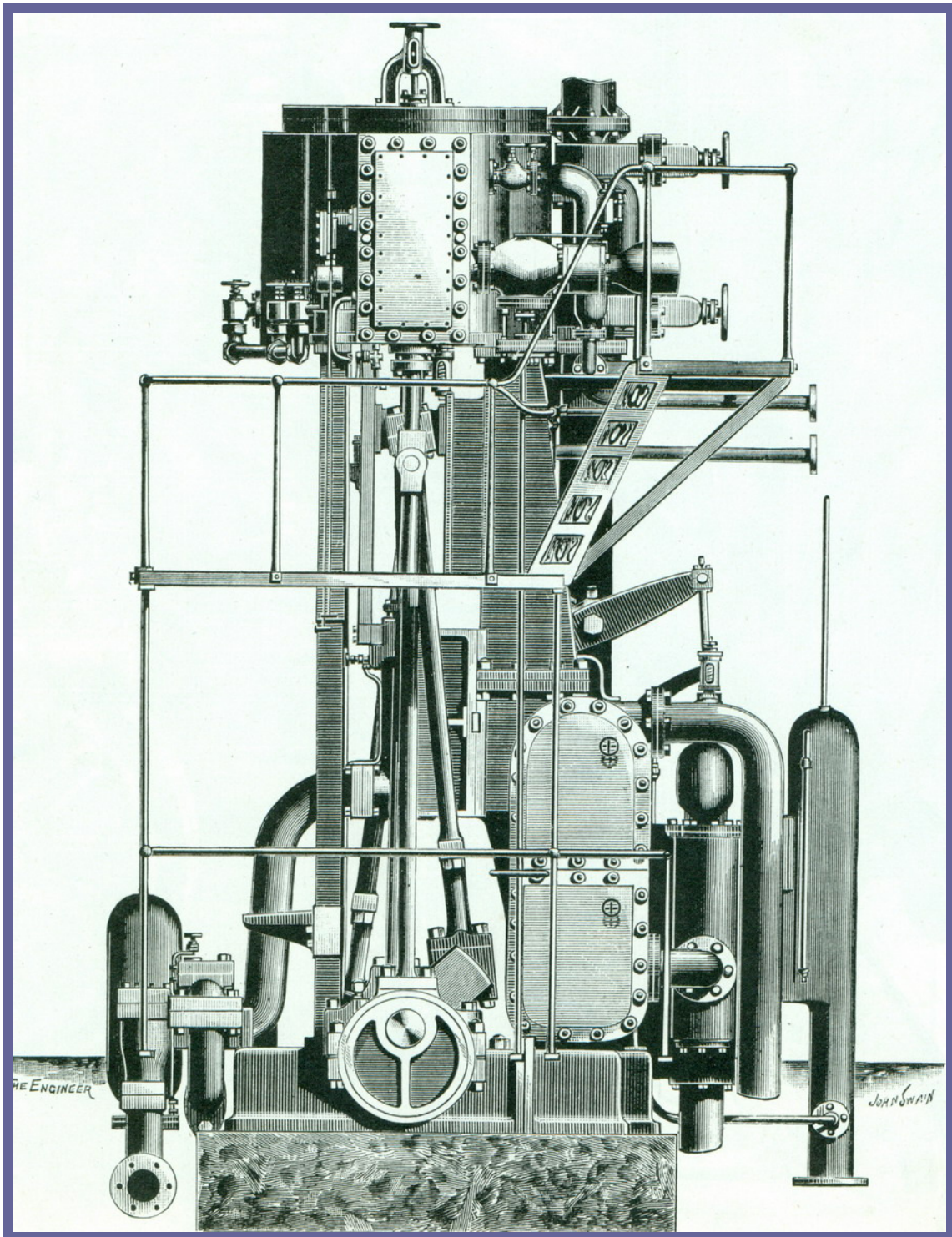
Following pictures from “Pumps Bailed out an Industry and gave Power from afar,” John Mortimer, *The Engineer*, “Highlights of 120 Years,” 1976 (CIBSE Heritage Group Collection)



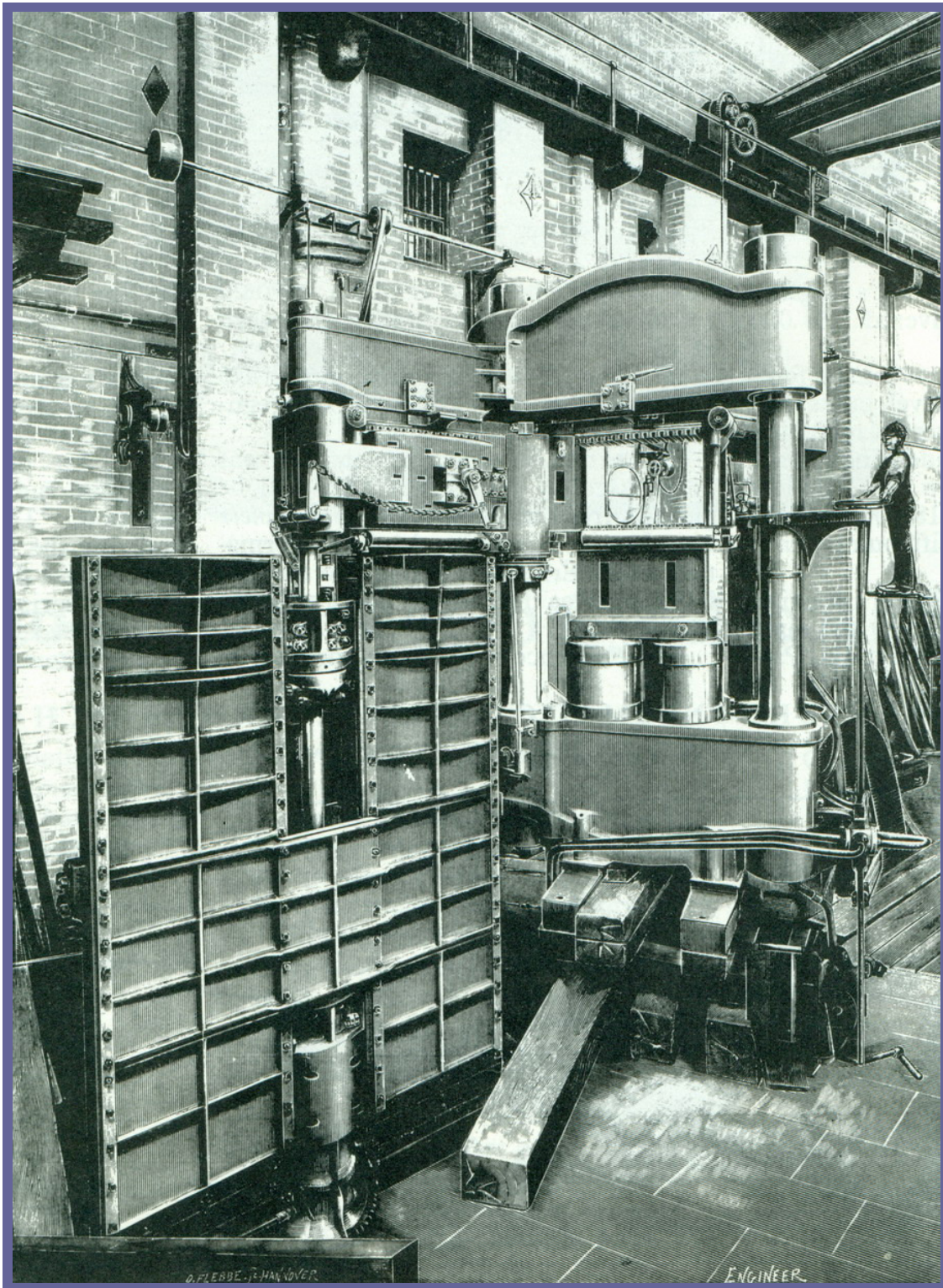
The London Hydraulic Power Company's Station, Wapping, 1893



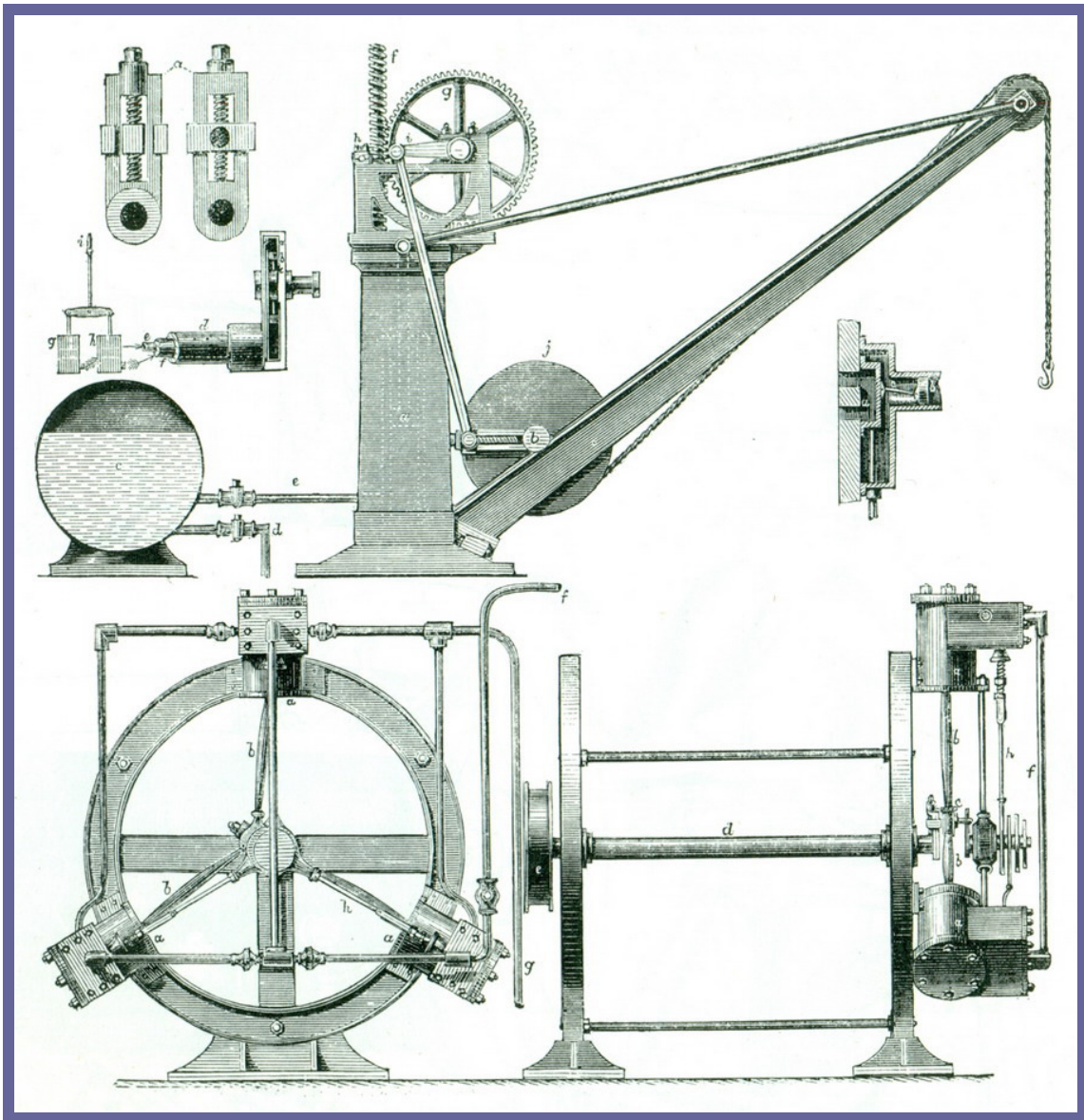
Engines and Pumps in the Hydraulic Power Company's Station at Deptford, 1893 by the Hydraulic Engineering Co of Chester



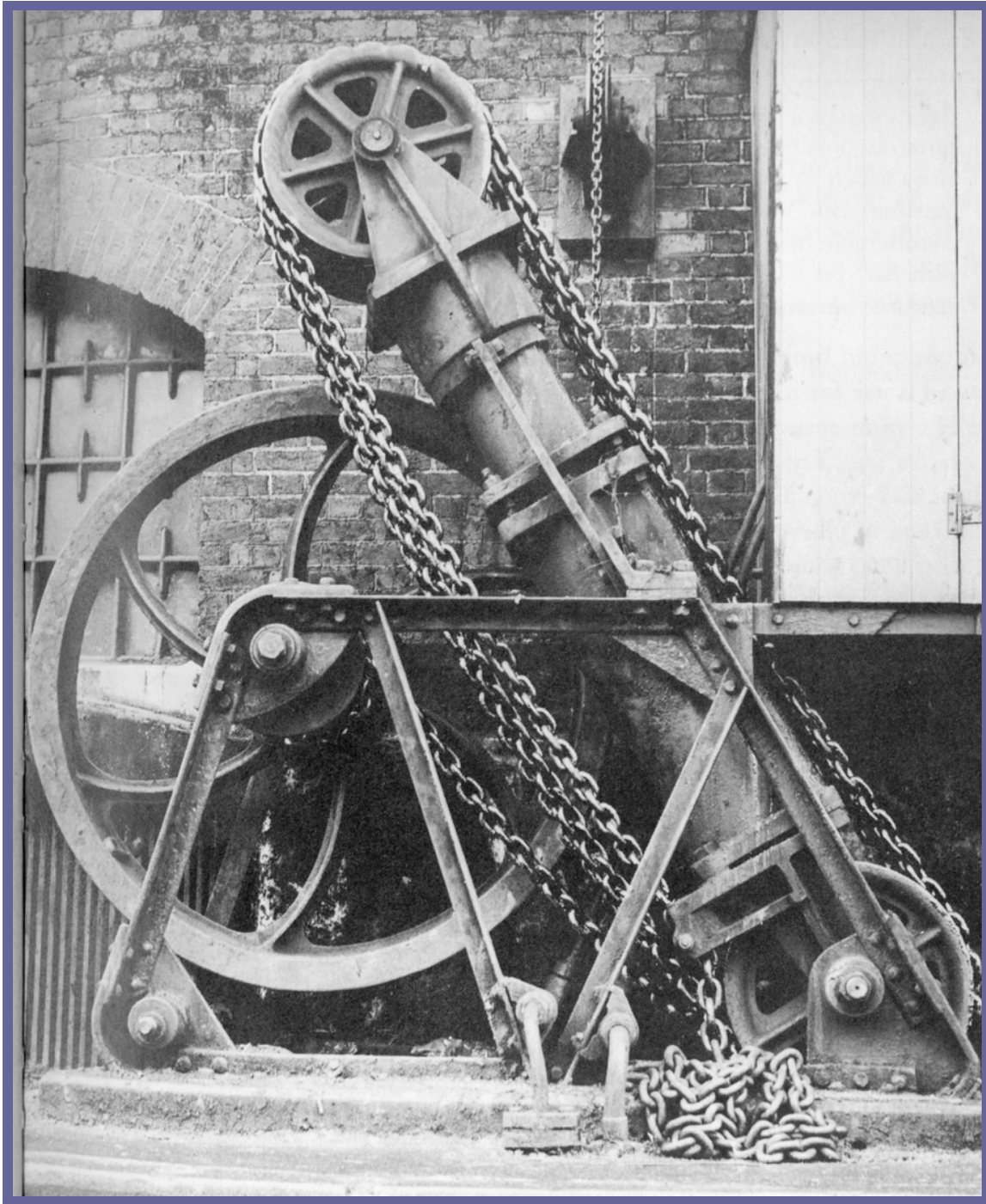
End view of engines and pumps installed in the London Hydraulic Company's Wapping Station, 1893



Cyclone Hydraulic Baling Presses, 1891
By Fawcett, Preston & Company, Liverpool
(To appreciate the size, note the man at centre height, extreme right)



Crane with Knowelden & Edwards Hydraulic Engines, Patent of 1858



Hydraulic Devil (Dockside Crane) at St Katherine's Docks in London

**"London under London," Richard Trench & Ellis Hillman, 1984
(CIBSE Heritage Group Collection)**