

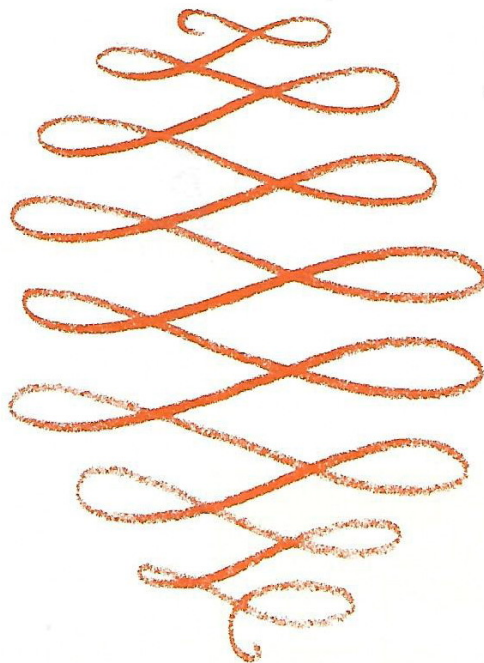


---

# J. Jeffreys & Co.

---

Specialists  
in  
Multi-Service  
Engineering



The First Hundred Years....



## John Jeffreys

Founded in 1881 by John Jeffreys, in offices at 11 Old Queen Street, Westminster, and with works at Gladstone Terrace, Battersea, the Company was by the turn of the century undertaking major mechanical contracts with a total staff of ten.

In the early 1900's John Jeffreys was appointed a Member of the Institute of Mechanical Engineers and had written two technical papers for publication entitled "Warmth and Fresh Air" and "A Short Treatise on Vacuum Steam Heating".

Upon his death in 1916 John Jeffreys was succeeded as Chairman by Edgar Herring, who was also Joint Managing Director with P.M.B. Grenville who had earlier married John Jeffreys' daughter. John W. Cooling joined the Company in 1920 and subsequently became Chairman and Group Managing Director.

During its first hundred years J. Jeffreys has not only played its role in the development of services technology but has also provided the following institutional and trade association Presidents.

Institution of Heating & Ventilating Engineers		Heating & Ventilating Contractors Association	
Edgar Herring	1919	P. M. B. Grenville	1925 and
P. M. B. Grenville	1924		1926
John W. Cooling	1932	John W. Cooling	1951
John M. Cooling	1975	John M. Cooling	1969

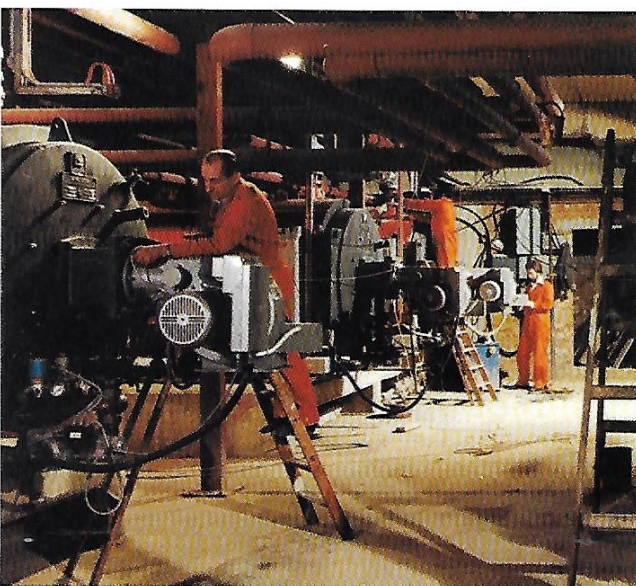
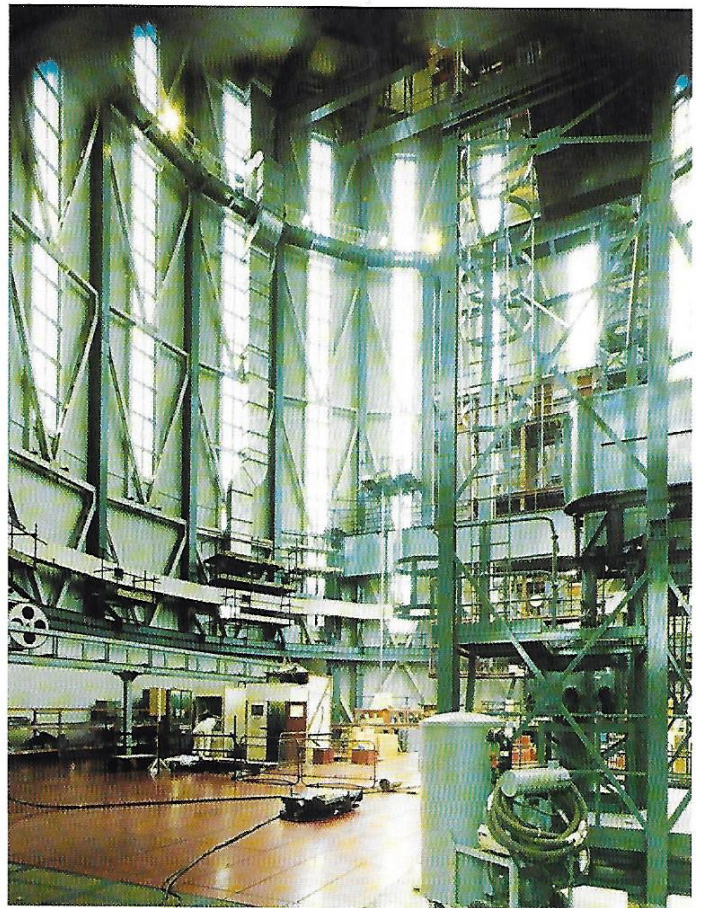
J. Jeffreys was acquired by Balfour Kilpatrick in 1973



---

# J. Jeffreys

---



---

## Multi-Service Engineers

---

The logo for BK, consisting of the letters 'B' and 'K' in a bold, orange, sans-serif font.

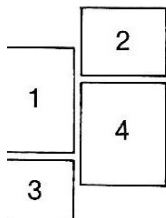
## Dungeness 'B' Nuclear Power Station

The stainless steel ductwork directs a curtain of air over the cooling pond water to prevent radioactive particles escaping. This air is cooled and filtered by a bank of absolute filter units in the centre of the ponds.



# J. Jeffreys – multi-service engineers

## Front Cover



### Seal House and Fishmongers Hall, The City of London

Jeffair Ducts supplied and installed some 30 tonnes of ductwork on this project.

Architects: Holford Associates  
Consultants: Mott Hay & Anderson

### Avon Cosmetics Limited, Northampton

Illustration shows process pipework in the production area.

Design and Management Contractors:  
The Austin Company of UK Limited

### Times Newspapers Limited, London

The installation of mechanical and electrical services in progress.

Architects: Ernest Chew & Associates  
Quantity Surveyors: Widnell & Trollope

### Central Electricity Generating Board Dungeness 'B' Nuclear Power Station

View of ductwork within the reactor charge hall.

Client: Atomic Power Constructors Limited  
Consulting Engineers: Donald Rudd  
& Partners

At J. Jeffreys we undertake the complete range of electrical and mechanical engineering installation which in addition to our ductwork manufacturing and pre-fabrication workshop facilities enables us to provide a totally intergrated service.

Our work includes:

**AIR CONDITIONING · HEATING · LIGHTING · VENTILATION · PIPED SERVICES · PLUMBING · FIRE PROTECTION AND DETECTION · PROCESSED PIPEWORK AND COMPRESSED AIR · HIGH, MEDIUM AND LOW VOLTAGE DISTRIBUTION · PUBLIC ADDRESS SYSTEMS · INSTRUMENTATION AND PROCESS CONTROL · JEFFAIR DUCTS · DUCTWORK FABRICATION AND INSTALLATION · WHALEN VERTICAL FANCOIL UNITS.**

As a subsidiary company of Balfour Kilpatrick we have access to substantial technical and financial resources, enabling us to undertake projects of any size or complexity with complete assurance.

This publication illustrates a few of our recent contracts.

## J. Jeffreys & Company Limited

90-100 Church Road Teddington  
Middlesex TW11 8PZ  
Tel: 01-977 3325 Telex: 92884 (JEFTED)

A subsidiary of Balfour Kilpatrick Limited



BK COMPANY

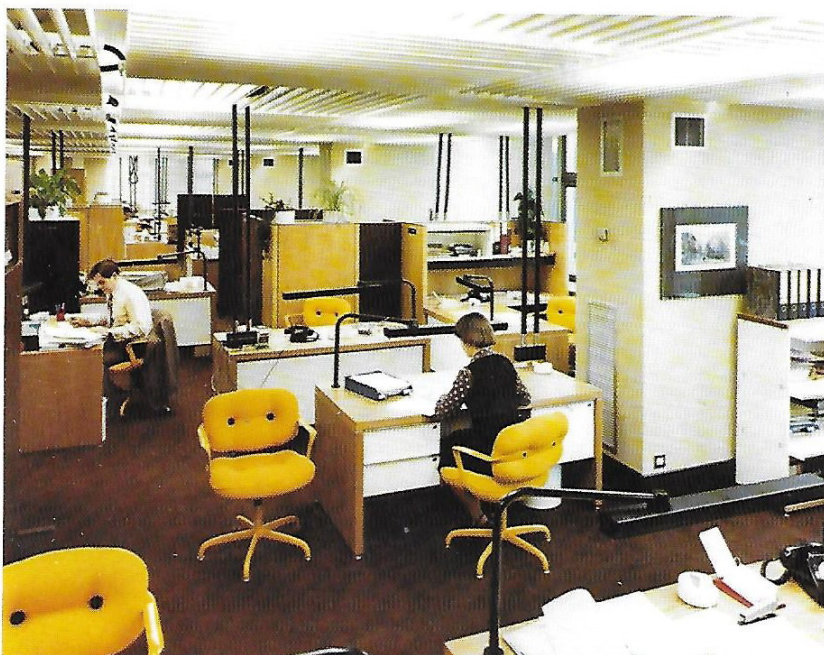


*Above:*

**Times Newspapers Limited  
Central Boiler Complex, London**

The completed boiler house. Our turnkey responsibilities included the design and installation of electrical and mechanical services together with all the associated builder's work.

Illustrated here is the roof plant room boiler house.



*Left:*

**Headquarters of Rank Xerox Limited  
Euston Road, London**

Cooling was provided by 176 Whalen vertical fan coil units which were installed while the building was occupied, with a minimum of disruption.

Consultants: Troop Bywater & Anders

A typical office, illustrating the vertical fan coil units.

## Hambro Life Centre Swindon, Wiltshire

This prestigious office development incorporates sophisticated air conditioning systems for its 7,500 sq. m. of offices.

Architects: YRM/Peter Carter

Consultants: YRME





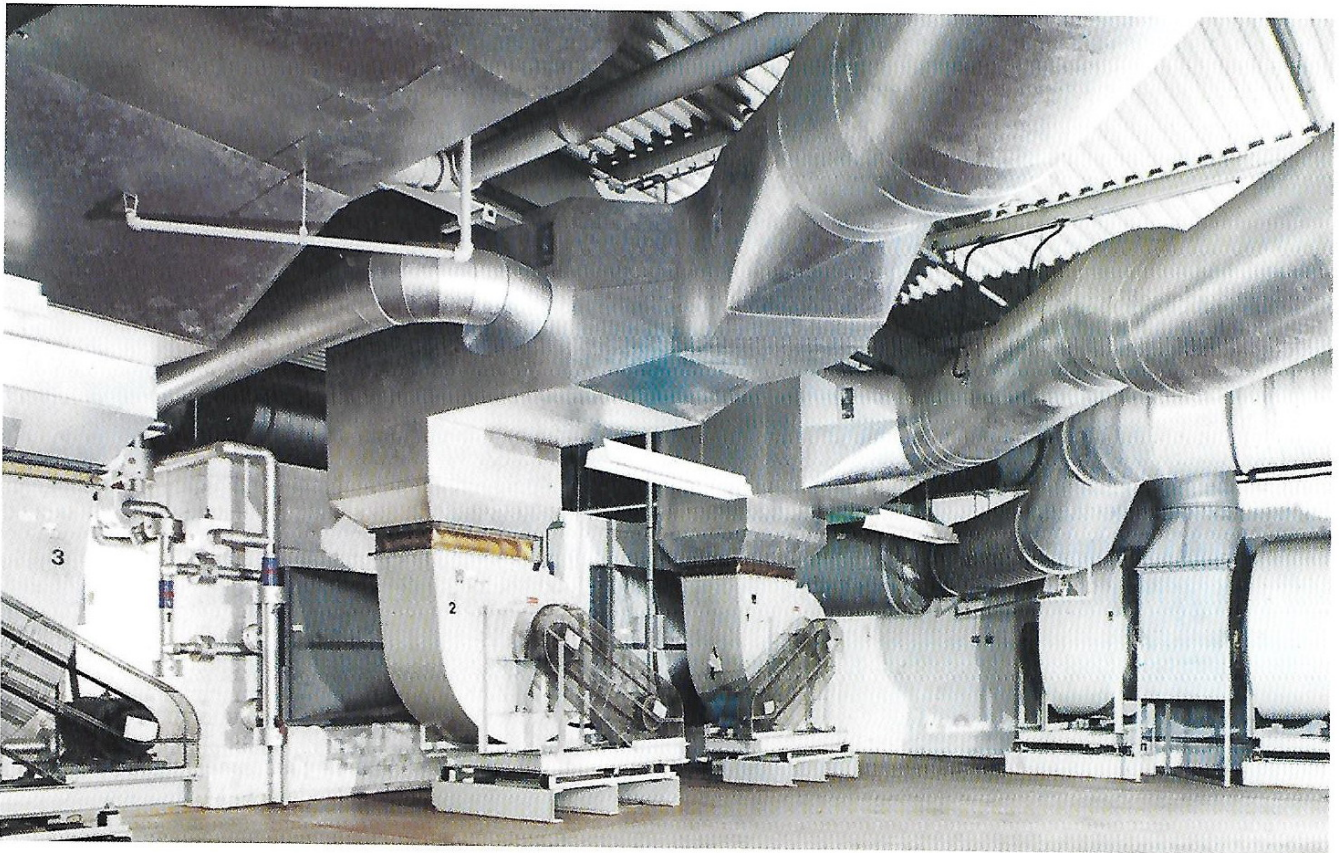
## British Airways Hanger No. 02 London Airport, Heathrow

The mechanical services installation for this project was undertaken on a design and construct basis. Four air handling plants and 130 tonnes of complex high and low velocity ductwork are capable of restoring the ambient temperature of the 280,000 cu. m. hangar to an acceptable level within 20 minutes of the entry of a Jumbo Jet.

Project Managers: Civil Engineering Branch  
British Airways Property Dept.

Consulting Architects: Norman Royce Topping  
Hurley & Stewart

Co-ordinating Consultants: Donald Rudd & Partners



*Above:*

Roof air handling plant room.

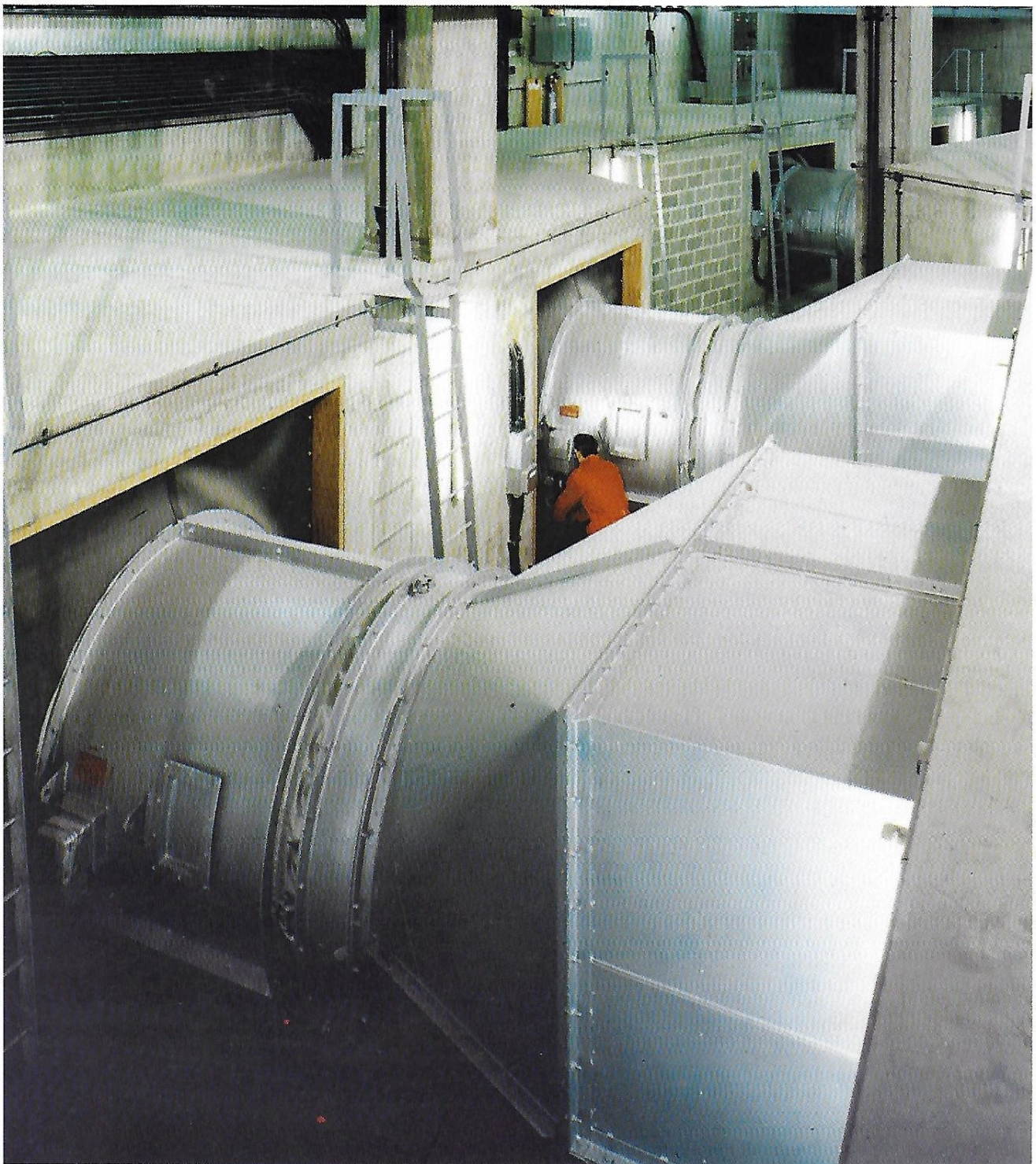
*Left:*

Main hangar entrance showing over-door  
Jetflo terminal units.

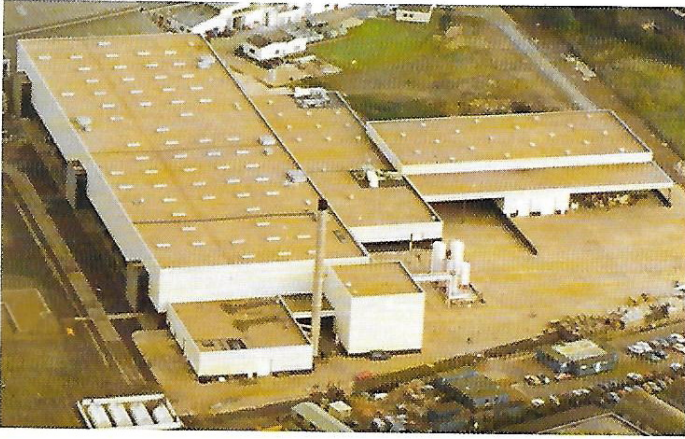
## Blackfriars Underpass, London

The contract included the installation and commissioning of tunnel ventilation plant and controls.

Client: City of London Corporation  
Consultants: Mott Hay & Anderson



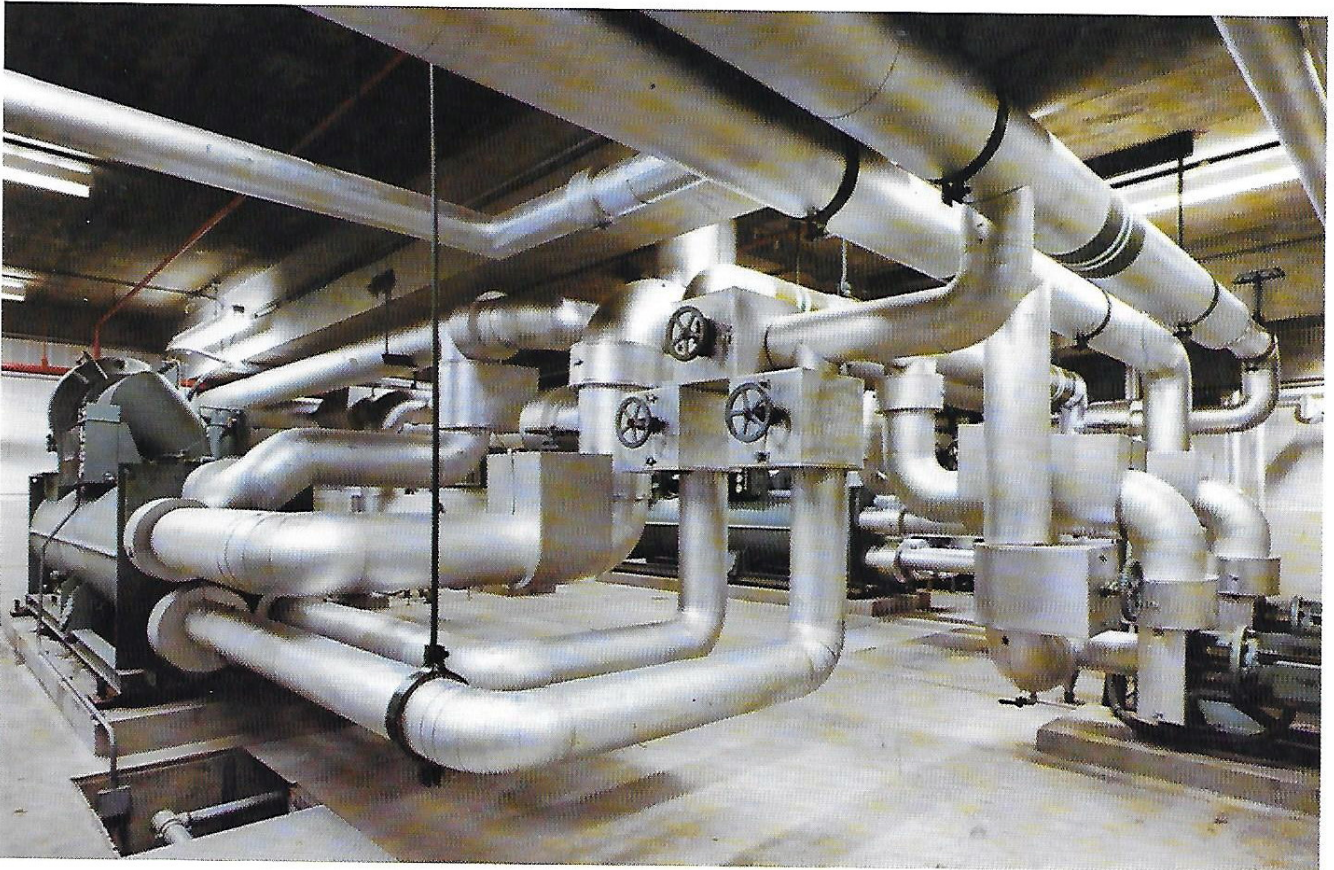




## Avon Cosmetics Limited, Northampton

This multi-million pound mechanical services complex incorporates high pressure steam boiler plant, heating, chilled water, air handling, plumbing and process installations.

Design and Management Contractors: The Austin Company of UK Ltd.



*Above:*

Services pipework within the chilled water plant room.

*Left:*

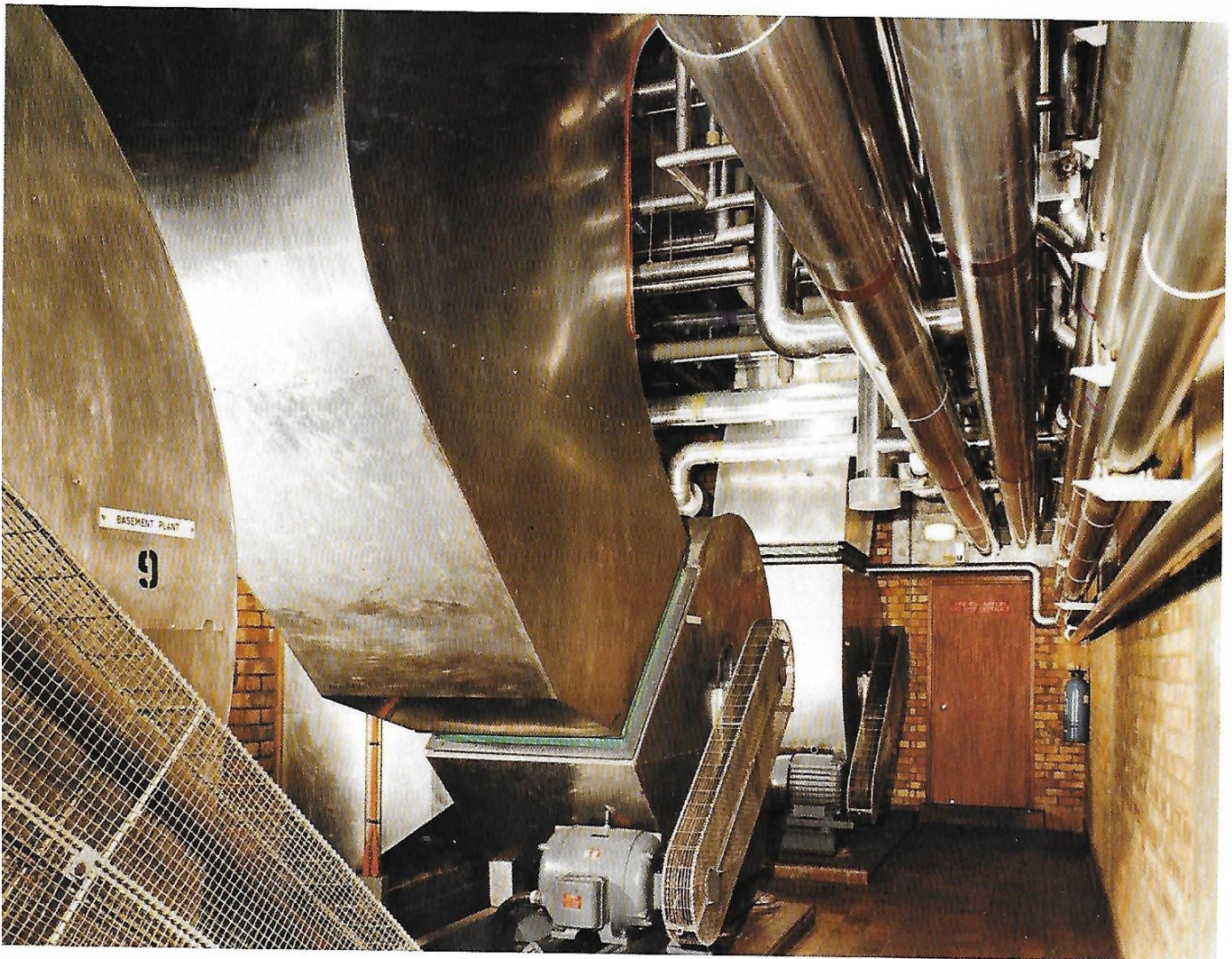
The completed central boiler house.

## The Berkeley Hotel, London

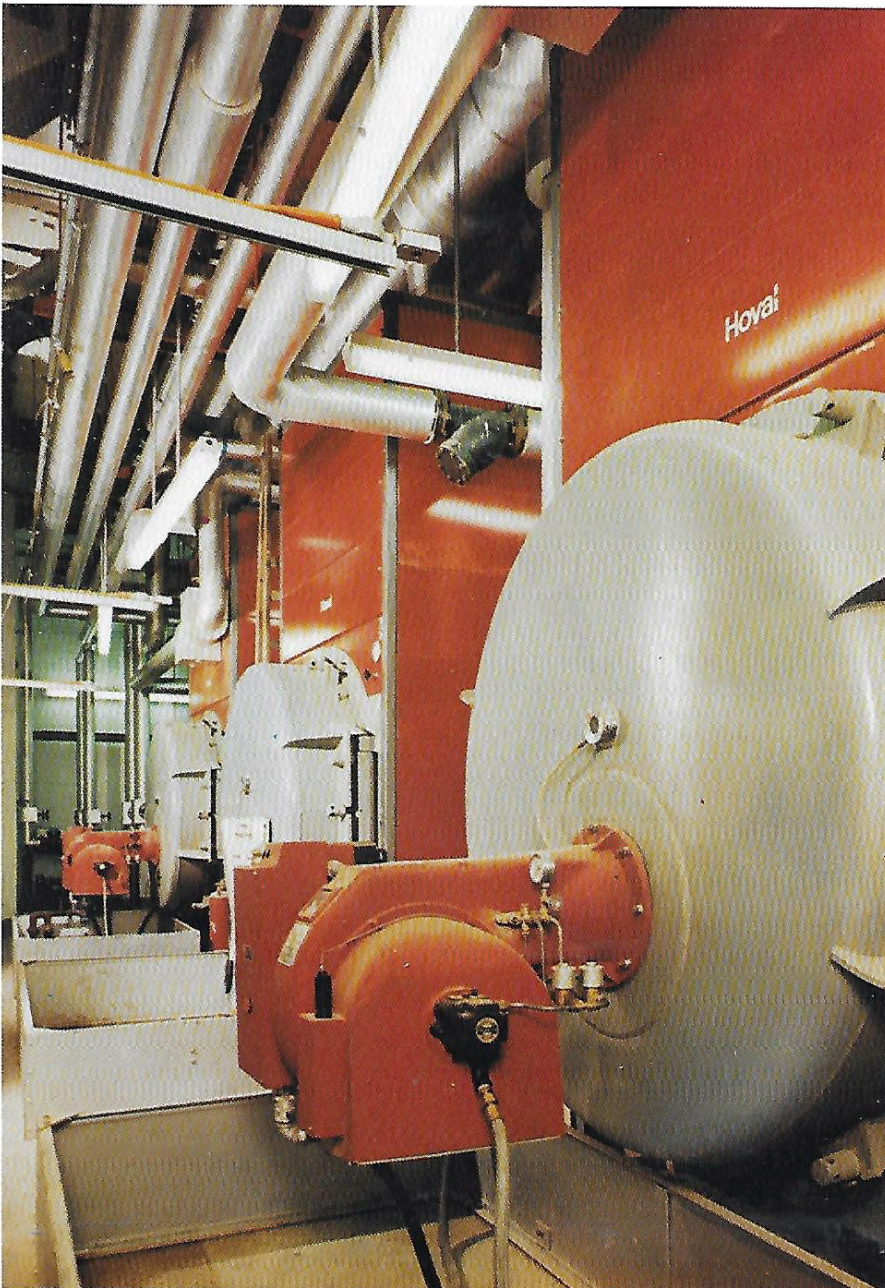
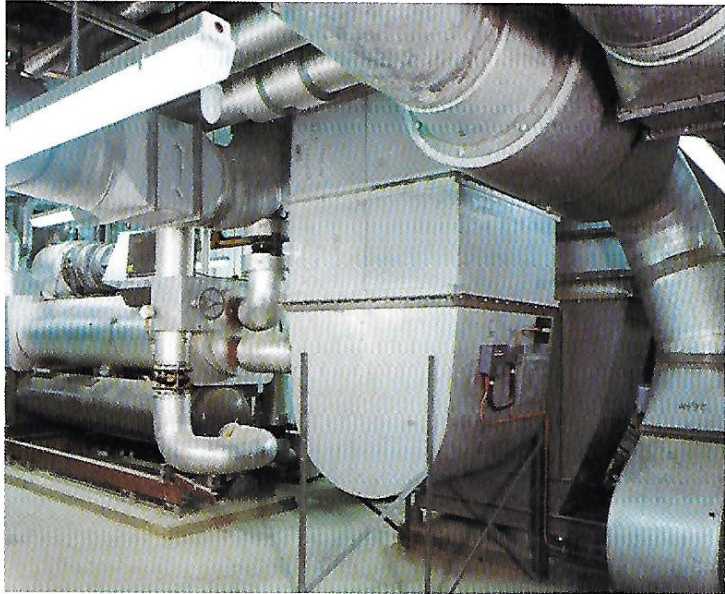
The mechanical services installation for this luxury air conditioned hotel were undertaken on a design and construct basis, every bedroom having its own tailor-made air conditioning installation. In addition to air conditioning the services installation included heating, plumbing and fire protection.

Architect: Brian O'Rorke, R.A., F.R.I.B.A.

Client: Savoy Hotels Limited.



Above:  
The air handling plant room



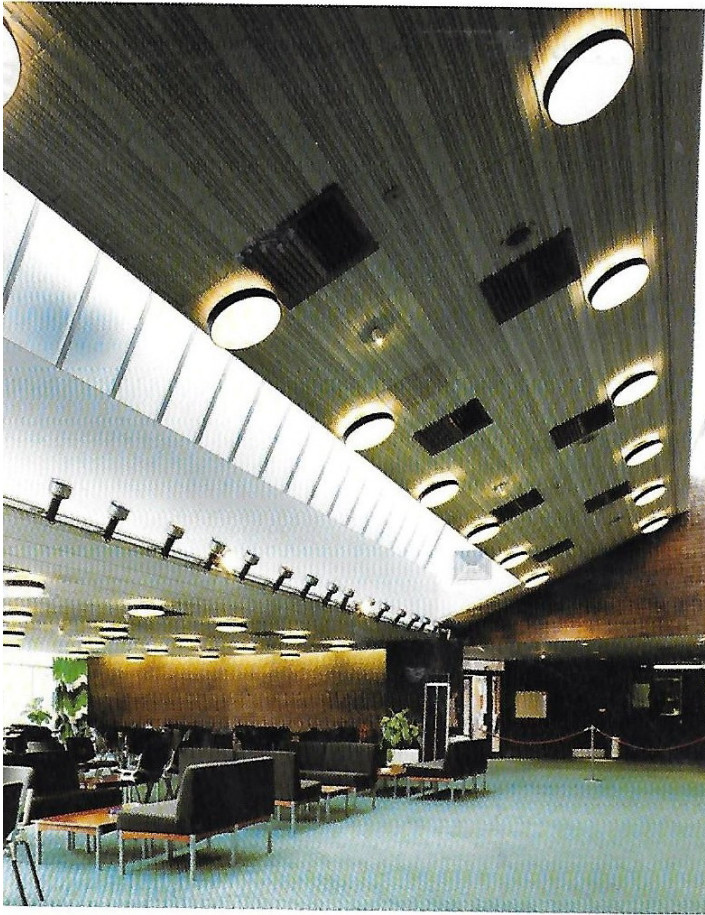
## Tower Block Development Buckingham Gate, London

The mechanical services for this 15-storey development included a high velocity induction unit air conditioning system together with general heating and ventilation, hot and cold water services, dry riser and sprinklers.

Architects: Elsom Pack & Roberts  
Consultants: Mark Brown & Rockhill

*Above:*  
Refrigeration plant and ductwork

*Left:*  
Boiler plant installation at 8th floor level.



## Hillingdon Theatre, London

The contract included the design, installation and commissioning of the electrical and mechanical services including specialized stage lighting, public address systems and air conditioning for the theatre.

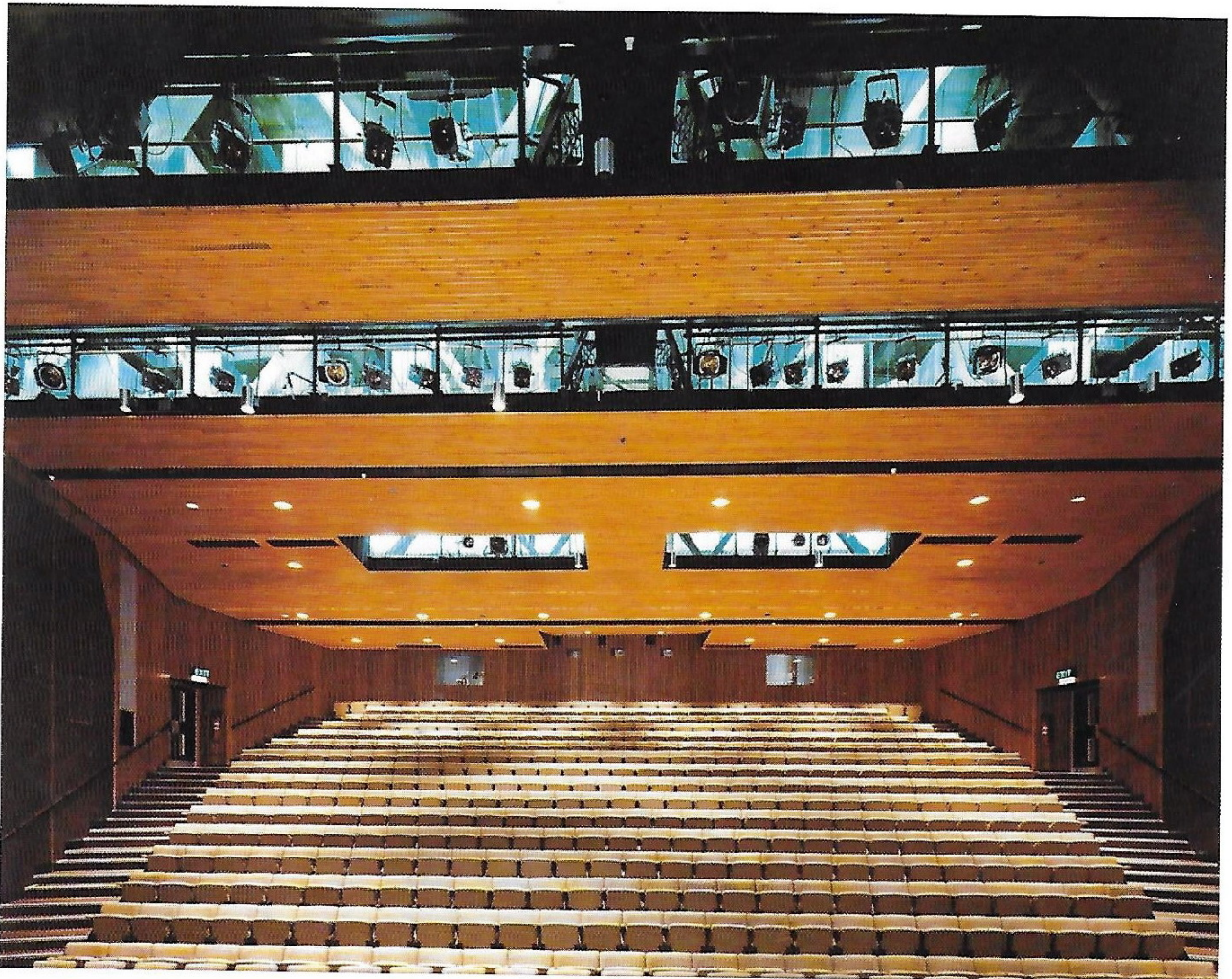
Architects: London Borough of Hillingdon  
Consultants: Costain Construction Limited

*Left:*

Completed services work within the restaurant

*Below:*

View of auditorium and stage lighting.





## Seal House and Fishmongers Hall, The City of London

A joint development was undertaken comprising a limited re-furbishment in addition to new accommodation for the Hall of the Worshipful Company of Fishmongers. The development also included a high quality speculative office block. The mechanical and electrical services included VAV air conditioning, heating, ventilation and plumbing.

Architects: Holford Associates

Consultants: Mott Hay & Anderson



*Above:*  
Roof plant room boiler house.



*Left:*  
Typical office within Seal House.

**Lloyds Bank Limited  
Magnare House, Sidcup, Kent**

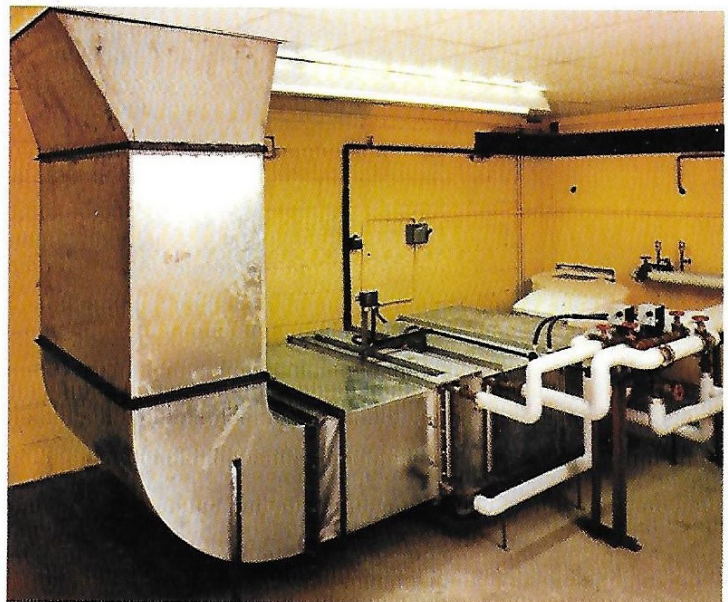
Work included the design and installation of electrical and mechanical services to the re-furbishment of Magnare House.

Architects: Lloyds Bank Limited



*Above:*  
Air handling units and overhead services  
in the Printing Works.

*Right:*  
Small air handling plant at first floor level.





### Thomas Cook Headquarters, London

A total of 333 Whalen vertical fan coil units were installed to provide complete air-conditioning to this major re-furbishment contract.

Architects: Boreham Son & Wallace

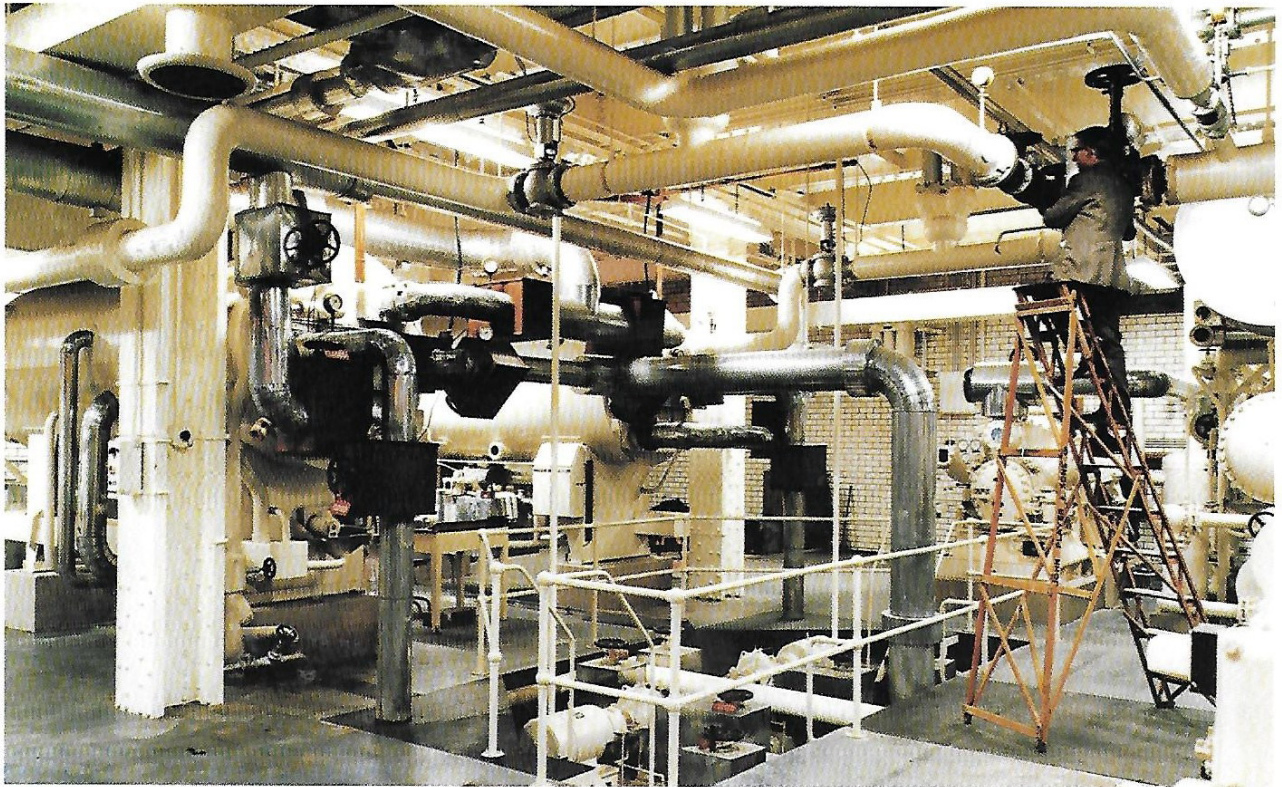
Consultants: F. C. Foreman & Partners



*Above:*  
Whalen units being installed.



*Left:*  
A tenant's conference room; note the unobtrusive ventilation louvres.



### **John Player & Sons, Nottingham**

J. Jeffreys have undertaken work in numerous John Player factories for over 50 years, both new installations and re-furbishments. Services have included air conditioning, heating and ventilation to manufacturing and office areas.

Consultants: J. Player & Sons

Above: An air-conditioned plant room at a Player's factory.

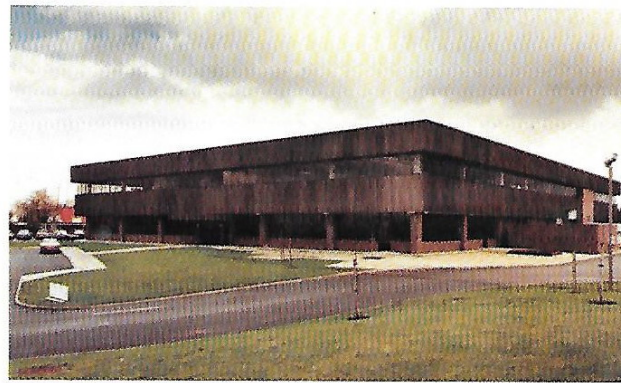
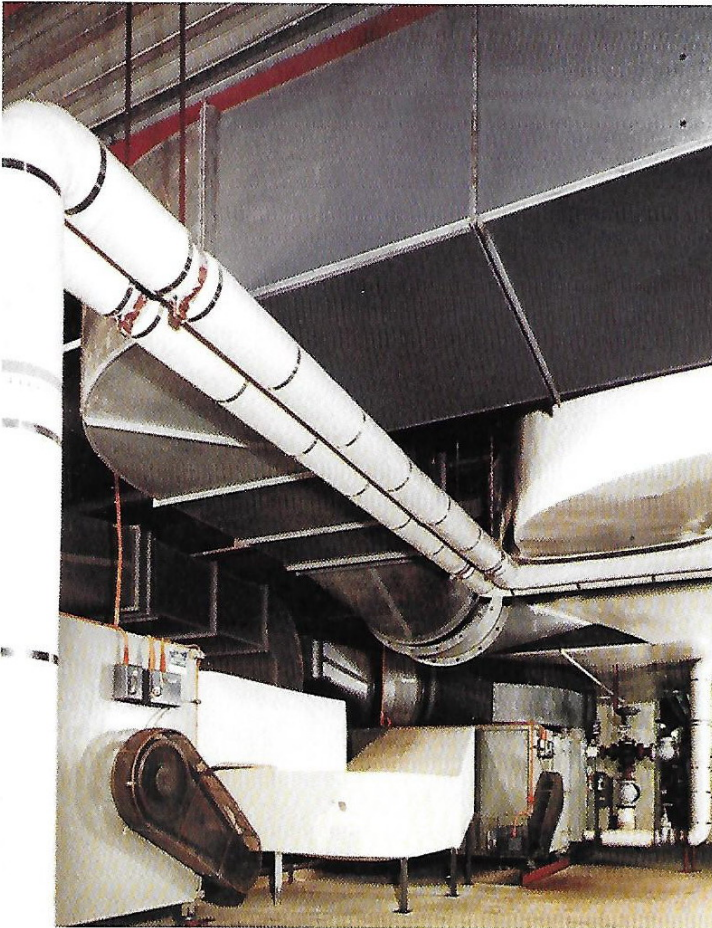
### **Mermaid Theatre Development, The City of London**

The redevelopment of this famous London workshop theatre is a major multi-service undertaking. Installation includes air conditioning, ventilation, fire protection, plumbing and electrical work to both the theatre and the joint office block developments.

Consultants: Mott Hay & Anderson.







**Computer Factory for Hewlett Packard Limited  
Winnersh, Berkshire**

The mechanical services installation comprised seven low velocity air handling systems with air conditioning to specialist areas.

Consultants: The Austin Company of UK Limited

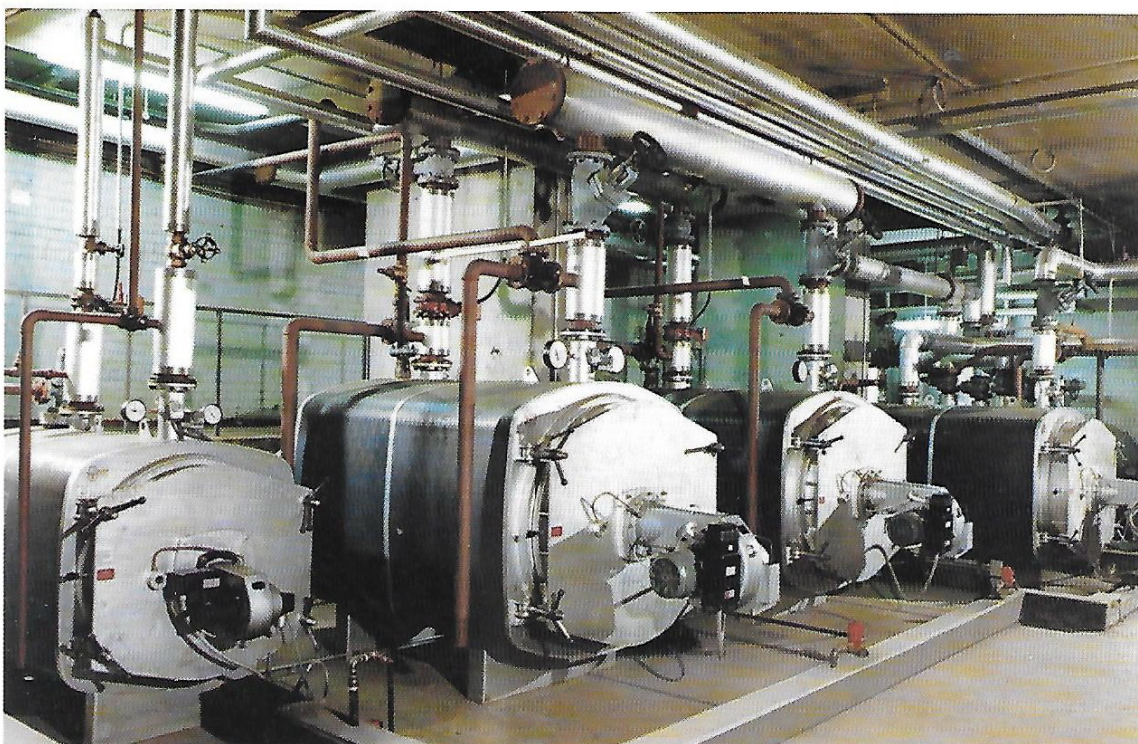
*Left:*

Air handling supply and extract plant.

**Eagle Star Properties Limited  
Crown House, Morden, Surrey**

The contract called for the re-furbishment of the boiler house, illustrated here.

Consulting Engineers: Derek Clapton & Partners





Jeffair Ducts Workshop

1981 – our Centenary Year, and this brochure is published to illustrate a few of our more recent contracts and shows the diversity of installations with which we are familiar.

The first one hundred years has seen us established as a leading national services contractor, able to offer all that is best in engineering, design and installation. Our experience and techniques ensure that the highest possible standards of engineering excellence are commensurate with economy of installation.

We offer a complete service either on a construct only or design and construct basis for any commercial or industrial application.

Our Teddington premises were purpose built for us as Services Contractors and include a factory with facilities for pipework pre-fabrication and ductwork manufacture.

We shall be glad to provide further information on request.

*Specialities:*

CENTRAL HEATING,  
INVISIBLE PANEL HEATING,  
HOT WATER SUPPLY,  
VENTILATION & AIR CONDITIONING,  
COOLING BY REFRIGERATION,  
DRYING OVENS,  
DUST & FUME REMOVAL.

ESTD 1881.

TELEPHONE  
4433 WATERLOO (9 LINES)  
TELEGRAMS  
JEFFREYS WATERLOO 4433.



To

YOUR REF.....

OUR REF.....

# J. JEFFREYS & CO. LTD.

## HEATING, VENTILATING & GENERAL ENGINEERS

*Head Offices & Works:*  
**ST. GEORGE'S HOUSE,  
195-203. WATERLOO RD., LONDON, S. E. 1.**

*Associated Firms:*  
AIR CONDITIONING CORPORATION (JEFFREYS) LTD., LONDON.  
McCANN LTD., DUBLIN, IRELAND.

MANAGING DIRECTOR  
J. W. COOLING, M. Sc. (TECH) M. I. MECH.

DIRECTORS:  
R. E. HERRING.  
J. H. DUCKWORTH, M. I. MECH.  
W. G. H. THURLEY.  
J. M. COOLING, B. Sc. (ENG.) A. C. I.



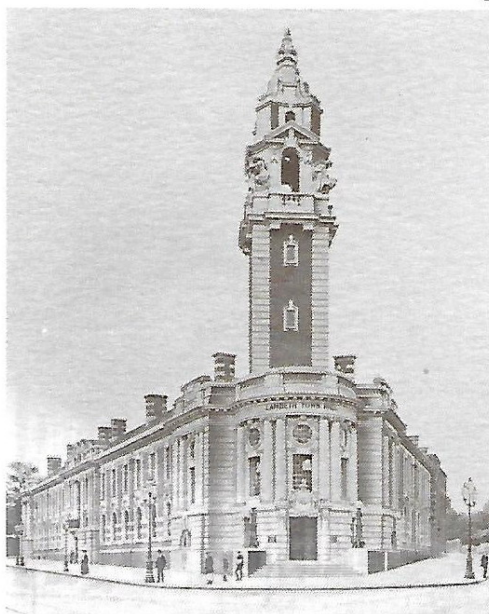
*An example of an early letterhead*

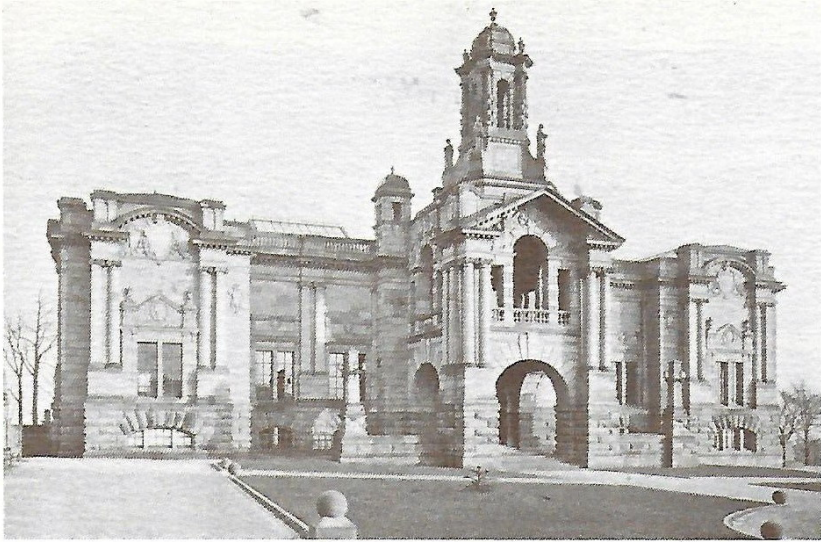
The illustrations shown on this and the following page are extracts from a J. Jeffreys brochure published in 1908.

1. Prudential Assurance Company, Holborn  
'Heating by Low Pressure Hot Water, with Calorifiers utilizing Exhaust Steam. Mechanical Exhaust Ventilation'.
2. Lambeth Municipal Buildings  
'Heated by Low Pressure Hot Water. Mechanical Exhaust Ventilation'.
3. Victoria and Albert Museum  
South Kensington  
'Heated by Atmospheric Steam. Ventilated on the Plenum System'.

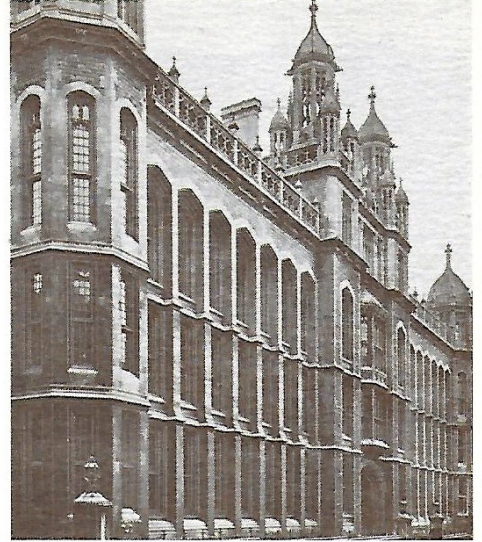


1  
2 3





1



2



3

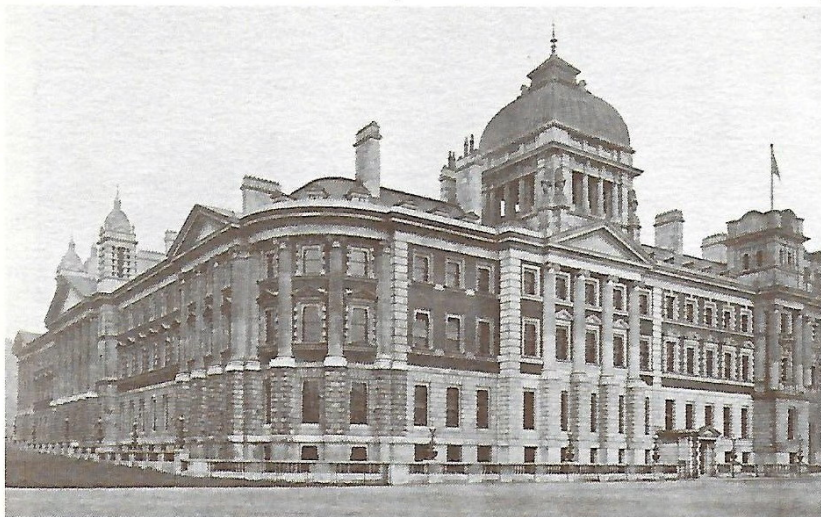
1. Cartwright Memorial Hall, Bradford  
'Warming and Ventilation on the Plenum System'.

2. Public Record Office, Chancery Lane  
'Heating by Low Pressure Hot Water'.

3. Bradford Town Hall (Extension)  
'Warming and Ventilation on the Plenum System to Council Chamber etc.  
Hot Water Heating to Corridors'.

4. The Admiralty Buildings, St. James Park  
'Heating by Hot Water. Plenum Ventilation to Principal Floor.  
Steam Boilers and Mains'.

5. Royal London Friendly Society, Finsbury Square  
'Heating by Low Pressure Hot Water.  
Hot Water Supply Installation.  
Exhaust Ventilation by Fans'.



4



5