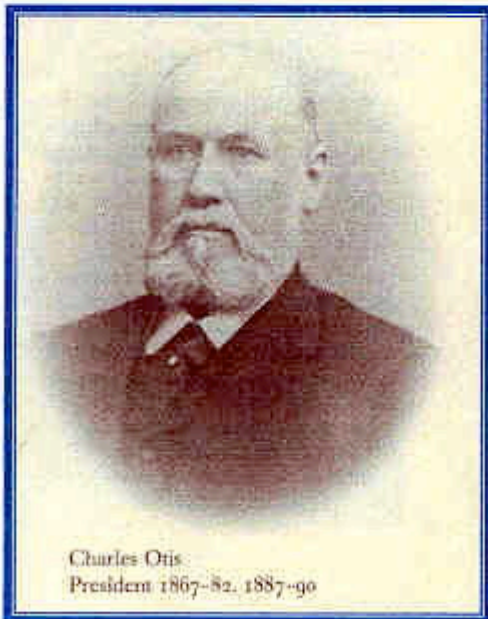
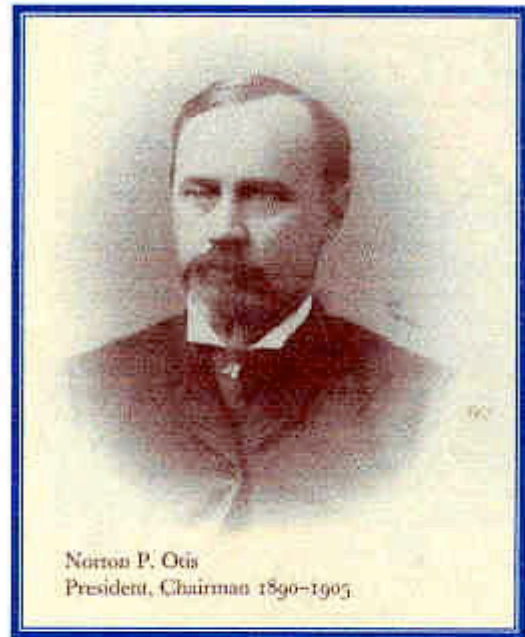
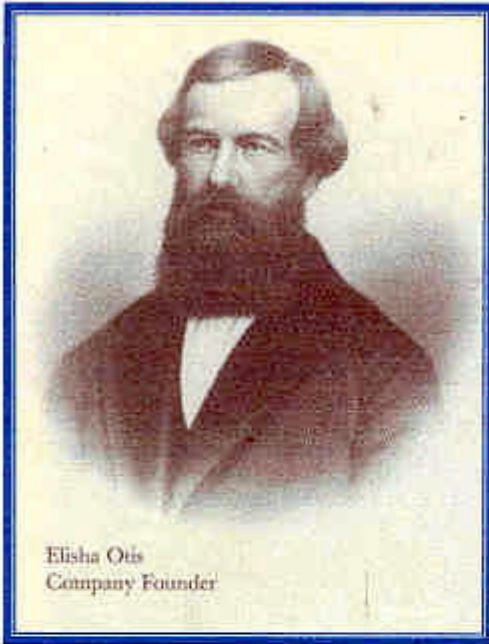
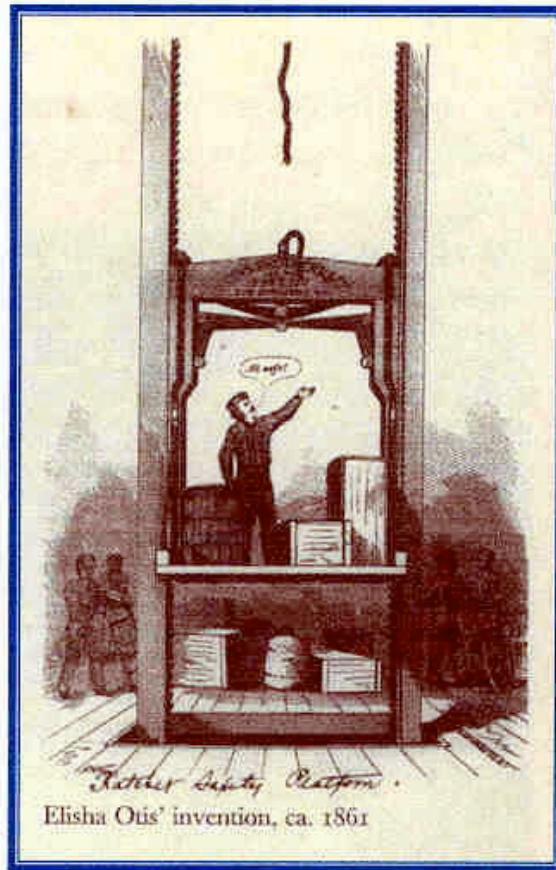


ELEVATORS



Pioneers of the Otis Elevator Company [OT]

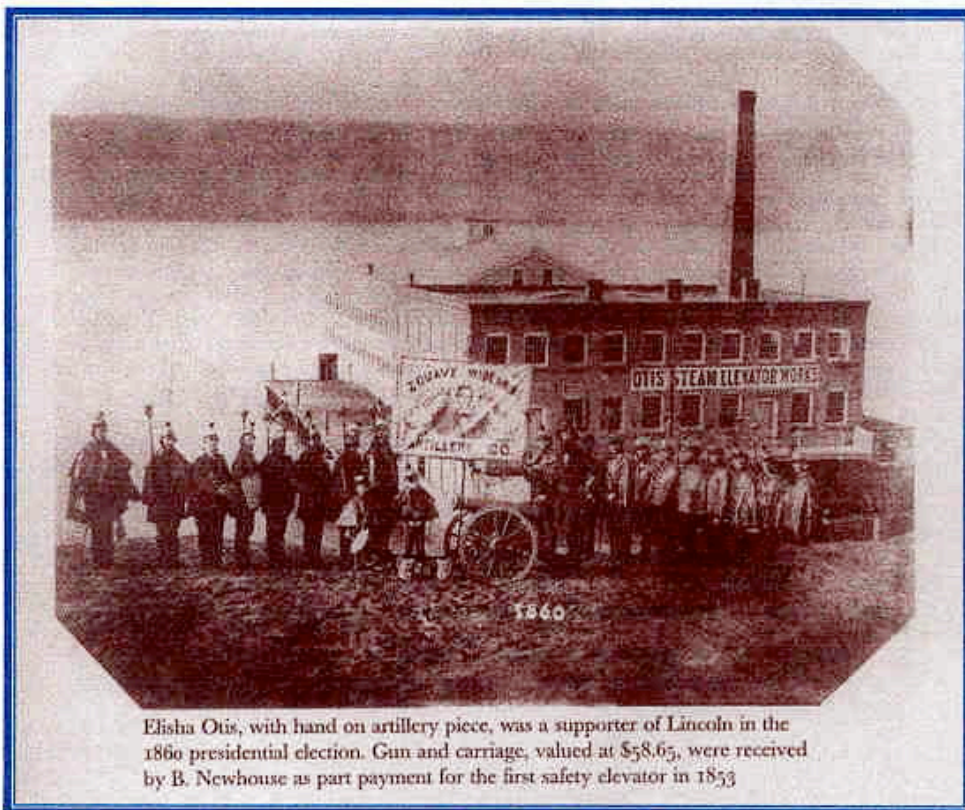
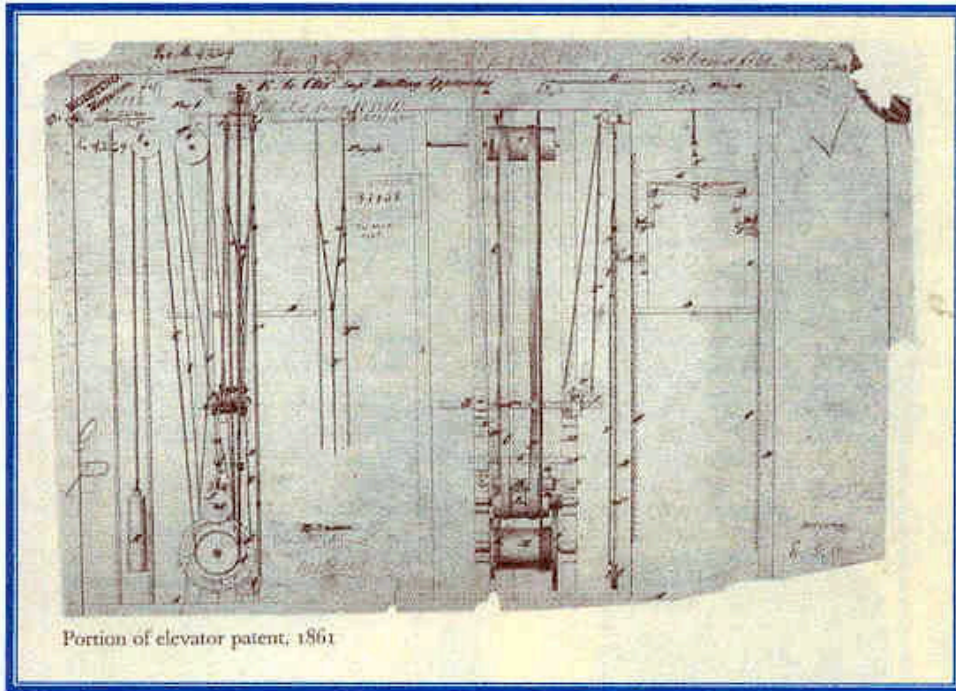
ELEVATORS



1853		50.	
Sept 20	sent to W. Buchanan for 200 Hudson St New York	one doz. Westchester - fine	200.00
"	" " " " " " " " " " " "	one doz " "	200.00
Nov 25	" " " " " " " " " " " "	" " " "	200.00
1854			
May 5	sent to Dr. Crystal Palace New York	one doz. Westchester - fine	100.00
June 7	" " " " " " " " " " " "	" " " "	100.00
July 10	" " " " " " " " " " " "	" " " "	100.00
Aug 14	" " " " " " " " " " " "	" " " "	100.00
Sept 18	" " " " " " " " " " " "	" " " "	100.00
Oct 22	" " " " " " " " " " " "	" " " "	100.00
Nov 26	" " " " " " " " " " " "	" " " "	100.00
Dec 30	" " " " " " " " " " " "	" " " "	100.00
1855			
Jan 3	sent to Young Men's Assoc - Bay St - New York	one doz. Westchester - fine	200.00
Feb 7	" " " " " " " " " " " "	" " " "	200.00
Mar 11	" " " " " " " " " " " "	" " " "	200.00
Apr 15	" " " " " " " " " " " "	" " " "	200.00
May 19	" " " " " " " " " " " "	" " " "	200.00
June 23	" " " " " " " " " " " "	" " " "	200.00
July 27	" " " " " " " " " " " "	" " " "	200.00
Aug 31	" " " " " " " " " " " "	" " " "	200.00
Sept 4	" " " " " " " " " " " "	" " " "	200.00
Oct 8	" " " " " " " " " " " "	" " " "	200.00
Nov 12	" " " " " " " " " " " "	" " " "	200.00
Dec 16	" " " " " " " " " " " "	" " " "	200.00
Jan 20	" " " " " " " " " " " "	" " " "	200.00
Feb 24	" " " " " " " " " " " "	" " " "	200.00
Mar 28	" " " " " " " " " " " "	" " " "	200.00
Apr 1	" " " " " " " " " " " "	" " " "	200.00
May 5	" " " " " " " " " " " "	" " " "	200.00
May 19	" " " " " " " " " " " "	" " " "	200.00
June 2	" " " " " " " " " " " "	" " " "	200.00
June 16	" " " " " " " " " " " "	" " " "	200.00
June 30	" " " " " " " " " " " "	" " " "	200.00
July 14	" " " " " " " " " " " "	" " " "	200.00
July 28	" " " " " " " " " " " "	" " " "	200.00
Aug 11	" " " " " " " " " " " "	" " " "	200.00
Aug 25	" " " " " " " " " " " "	" " " "	200.00
Sept 8	" " " " " " " " " " " "	" " " "	200.00
Sept 22	" " " " " " " " " " " "	" " " "	200.00
Oct 6	" " " " " " " " " " " "	" " " "	200.00
Oct 20	" " " " " " " " " " " "	" " " "	200.00
Nov 3	" " " " " " " " " " " "	" " " "	200.00
Nov 17	" " " " " " " " " " " "	" " " "	200.00
Nov 31	" " " " " " " " " " " "	" " " "	200.00
Dec 14	" " " " " " " " " " " "	" " " "	200.00
Dec 28	" " " " " " " " " " " "	" " " "	200.00
Jan 11	" " " " " " " " " " " "	" " " "	200.00
Jan 25	" " " " " " " " " " " "	" " " "	200.00
Feb 8	" " " " " " " " " " " "	" " " "	200.00
Feb 22	" " " " " " " " " " " "	" " " "	200.00
Mar 7	" " " " " " " " " " " "	" " " "	200.00
Mar 21	" " " " " " " " " " " "	" " " "	200.00
Apr 4	" " " " " " " " " " " "	" " " "	200.00
Apr 18	" " " " " " " " " " " "	" " " "	200.00
May 2	" " " " " " " " " " " "	" " " "	200.00
May 16	" " " " " " " " " " " "	" " " "	200.00
May 30	" " " " " " " " " " " "	" " " "	200.00
June 13	" " " " " " " " " " " "	" " " "	200.00
June 27	" " " " " " " " " " " "	" " " "	200.00
July 11	" " " " " " " " " " " "	" " " "	200.00
July 25	" " " " " " " " " " " "	" " " "	200.00
Aug 8	" " " " " " " " " " " "	" " " "	200.00
Aug 22	" " " " " " " " " " " "	" " " "	200.00
Sept 5	" " " " " " " " " " " "	" " " "	200.00
Sept 19	" " " " " " " " " " " "	" " " "	200.00
Oct 3	" " " " " " " " " " " "	" " " "	200.00
Oct 17	" " " " " " " " " " " "	" " " "	200.00
Oct 31	" " " " " " " " " " " "	" " " "	200.00
Nov 14	" " " " " " " " " " " "	" " " "	200.00
Nov 28	" " " " " " " " " " " "	" " " "	200.00
Dec 12	" " " " " " " " " " " "	" " " "	200.00
Dec 26	" " " " " " " " " " " "	" " " "	200.00
Jan 9	" " " " " " " " " " " "	" " " "	200.00
Jan 23	" " " " " " " " " " " "	" " " "	200.00
Feb 6	" " " " " " " " " " " "	" " " "	200.00
Feb 20	" " " " " " " " " " " "	" " " "	200.00
Mar 6	" " " " " " " " " " " "	" " " "	200.00
Mar 20	" " " " " " " " " " " "	" " " "	200.00
Apr 3	" " " " " " " " " " " "	" " " "	200.00
Apr 17	" " " " " " " " " " " "	" " " "	200.00
Apr 30	" " " " " " " " " " " "	" " " "	200.00
May 14	" " " " " " " " " " " "	" " " "	200.00
May 28	" " " " " " " " " " " "	" " " "	200.00
June 11	" " " " " " " " " " " "	" " " "	200.00
June 25	" " " " " " " " " " " "	" " " "	200.00
July 9	" " " " " " " " " " " "	" " " "	200.00
July 23	" " " " " " " " " " " "	" " " "	200.00
Aug 6	" " " " " " " " " " " "	" " " "	200.00
Aug 20	" " " " " " " " " " " "	" " " "	200.00
Sept 3	" " " " " " " " " " " "	" " " "	200.00
Sept 17	" " " " " " " " " " " "	" " " "	200.00
Sept 30	" " " " " " " " " " " "	" " " "	200.00
Oct 14	" " " " " " " " " " " "	" " " "	200.00
Oct 28	" " " " " " " " " " " "	" " " "	200.00
Nov 11	" " " " " " " " " " " "	" " " "	200.00
Nov 25	" " " " " " " " " " " "	" " " "	200.00
Dec 9	" " " " " " " " " " " "	" " " "	200.00
Dec 23	" " " " " " " " " " " "	" " " "	200.00
Jan 6	" " " " " " " " " " " "	" " " "	200.00
Jan 20	" " " " " " " " " " " "	" " " "	200.00
Feb 3	" " " " " " " " " " " "	" " " "	200.00
Feb 17	" " " " " " " " " " " "	" " " "	200.00
Feb 29	" " " " " " " " " " " "	" " " "	200.00
Mar 13	" " " " " " " " " " " "	" " " "	200.00
Mar 27	" " " " " " " " " " " "	" " " "	200.00
Apr 10	" " " " " " " " " " " "	" " " "	200.00
Apr 24	" " " " " " " " " " " "	" " " "	200.00
May 8	" " " " " " " " " " " "	" " " "	200.00
May 22	" " " " " " " " " " " "	" " " "	200.00
June 5	" " " " " " " " " " " "	" " " "	200.00
June 19	" " " " " " " " " " " "	" " " "	200.00
July 3	" " " " " " " " " " " "	" " " "	200.00
July 17	" " " " " " " " " " " "	" " " "	200.00
July 31	" " " " " " " " " " " "	" " " "	200.00
Aug 14	" " " " " " " " " " " "	" " " "	200.00
Aug 28	" " " " " " " " " " " "	" " " "	200.00
Sept 11	" " " " " " " " " " " "	" " " "	200.00
Sept 25	" " " " " " " " " " " "	" " " "	200.00
Oct 9	" " " " " " " " " " " "	" " " "	200.00
Oct 23	" " " " " " " " " " " "	" " " "	200.00
Nov 6	" " " " " " " " " " " "	" " " "	200.00
Nov 20	" " " " " " " " " " " "	" " " "	200.00
Dec 4	" " " " " " " " " " " "	" " " "	200.00
Dec 18	" " " " " " " " " " " "	" " " "	200.00
Dec 31	" " " " " " " " " " " "	" " " "	200.00

Otis Elevator Company [OT]

ELEVATORS



Otis Elevator Company [OT]

ELEVATORS

OTIS, BROTHERS & CO.,

Sole Manufacturers of

OTIS' PATENT LIFE AND LABOR SAVING HOISTING MACHINERY

MANUFACTORY AT YONKERS, N. Y.
OFFICE, 307-9 BROADWAY, New York.

For the use of Mines, Hotels, Commercial Houses, Storage Warehouses,
Sugar Refineries, Packing Houses, Lumber Sheds, Factories,
Docks, Wharves, Mills, Shipping, Docks, Mines, &c.

A GREAT VARIETY OF SUPERIOR HOISTING MACHINERY, ADAPTED TO EVERY CLASS OF BUSINESS
AND POWER, CONSTANTLY ON HAND AND IN PROCESS OF MANUFACTURE.



Large Hoisting Engine, Cut 1.
This engine is used for hoisting heavy loads in mines and factories. It features a large flywheel and a complex gear system for power transmission.



Large Hoisting Engine, Cut 2.
Another model of a large hoisting engine, designed for industrial applications requiring high power and reliability.

DEALERS in all kinds of Machinery required in the application of
Steam for Hoisting Purposes.
STEAM ENGINES, STEAM PUMPS, STEAM & WATER SAWS, STEAM & WATER
WORK, STEAM BOILERS, STEAM TRIPLES, STEAM ROLLERS, &c.

WIRE ROPE

Of the best quality, manufactured expressly for Hoisting, constantly
on hand and supplied to order.



Hoisting Engine, Cut 3.
A smaller hoisting engine model, suitable for use in mines and smaller industrial settings.



Hoisting Engine, Cut 4.
Another variation of a hoisting engine, showing different mechanical components.

DESCRIPTIVE CIRCULARS
of the Machinery, with full particulars
of its uses, and its application in various
branches of industry.



Large Hoisting Engine, Cut 5.
A detailed illustration of a large hoisting engine, showing its internal mechanisms and drive shafts.



Hoisting Engine, Cut 6.
A smaller hoisting engine model, showing a different perspective or configuration.



Hoisting Engine, Cut 7.
Another hoisting engine model, highlighting its compact design and mechanical details.



Hoisting Engine, Cut 8.
A hoisting engine model featuring a large flywheel and a complex gear arrangement.



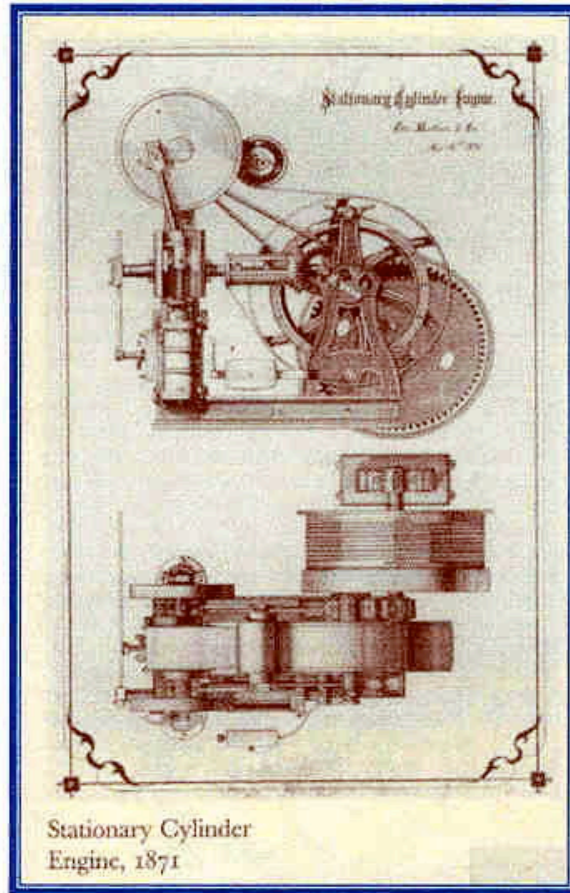
Hoisting Engine, Cut 9.
A hoisting engine model with a prominent horizontal shaft and various gears.



Hoisting Engine, Cut 10.
A hoisting engine model shown within a structural frame, possibly for a mine or factory setting.

Otis advertisement, 1868.

ELEVATORS



Otis Elevator Company [OT]

ELEVATORS

E. GRAVES OTIS,
MANUFACTURER OF
PATENT ELEVATORS.

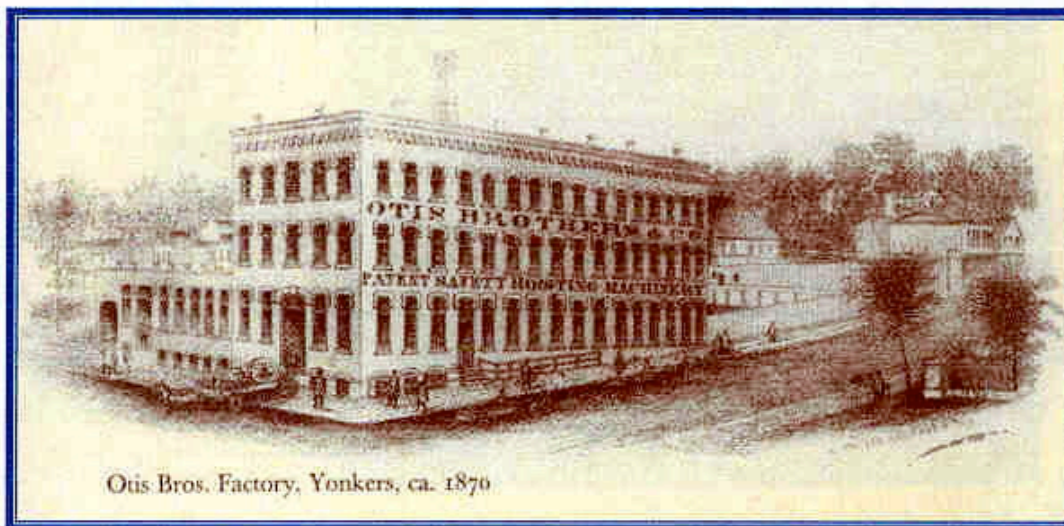
Otis' Life-Saving Steam Elevators are so constructed
that if the rope breaks the platform cannot fall.

OTIS' EXCLUSIVE STEAM ELEVATORS, fitted for houses of three, four, five, six, seven, eight, ten, twelve, and fifteen stories, with platform moving up and down, and the shaft of the elevator, are the most perfect ever made. They are made by the following firms: BIRD, FRANK & CO., LEITCH, LEITCH & CO., DILLON, ALLEN & CO., J. M. & CO., LEITCH & CO., BISHOP & H. OTIS, GEORGE, T. HAYES & CO., H. E. HARRIS, WELLS, WELLS & CO., C. W. & J. T. MOORE & CO., FORTUNE, HAYES & CO., BOSTON, MASS. THE OTIS ELEVATOR CO., NEW YORK, N. Y.

Twelve men killed in this city within four years with the old style, and none with the new style.

Address, **E. GRAVES OTIS, Yonkers, N. Y.**
Office, **307 BROADWAY, 3d floor.**
Office Hours from 1 to 5 P. M.

Elisha Otis' business card



New York, Aug 6th 1890

Received from N. P. Otis

Twenty one thousand eight hundred seventy five Dollars

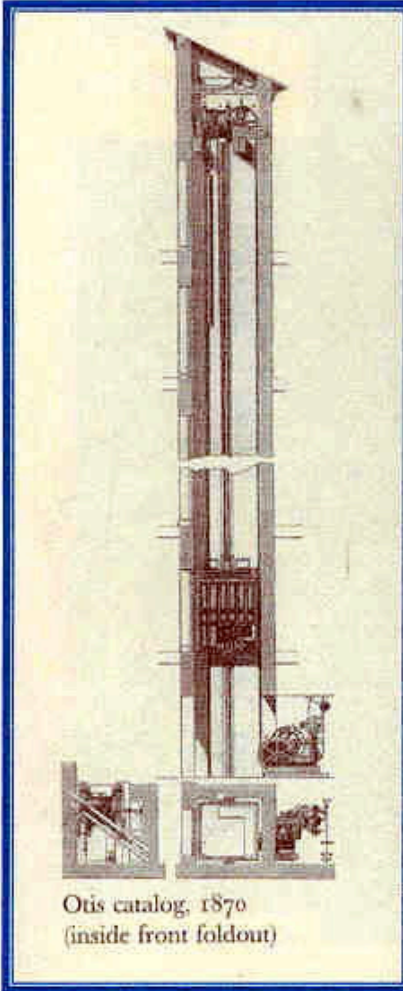
for the hundred seventy five (175) shares of the Otis Elevator Co. stock which is to be delivered to him within 30 days on the part of the

\$21,875 W. D. Baldwin

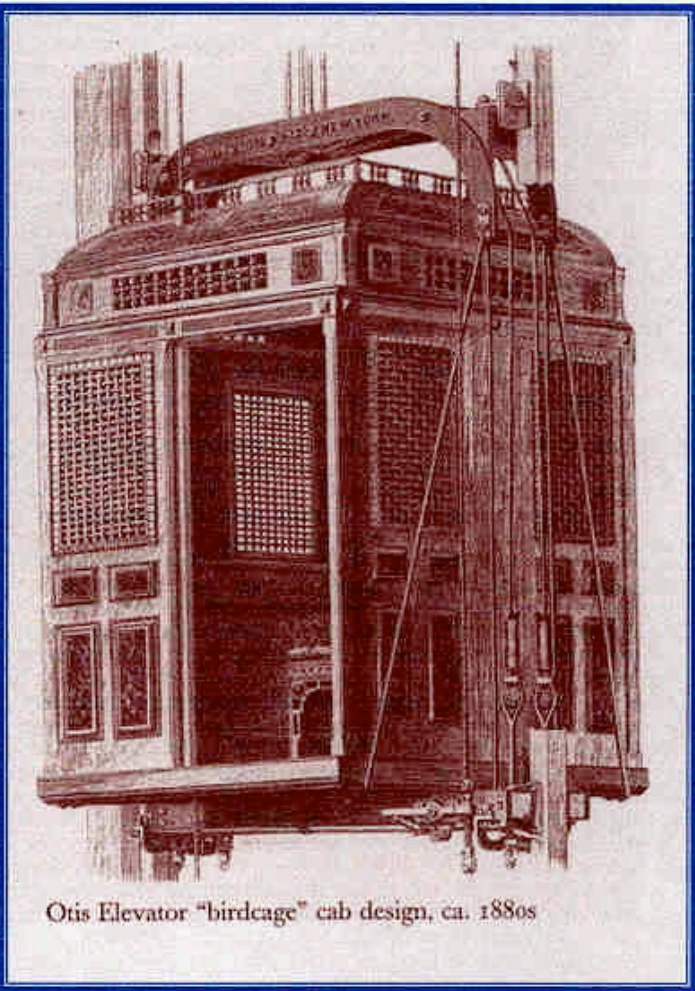
Receipt for \$21,875 received from N. P. Otis, signed by W. D. Baldwin, August 6, 1890

Otis Elevator Company [OT]

ELEVATORS



Otis catalog, 1870
(inside front foldout)



Otis Elevator "birdcage" cab design, ca. 1880s

OTIS ELEVATOR COMPANY

First State Trust & Savings Bank, Springfield, Ill., March 11, 1921

201 No. 6th St.

We agree to have OTIS SERVICE on TWO (2) Otis Electric Passenger Elevators
situated located at THE PA. SAV. BANK,
from 420 1/2 St. and therefore an agreement is entered into by either of
the parties herein.

For the sum of SEVENTY AND 00/100 DOLLARS (\$70.00) PER MONTH PAYABLE MONTHLY.

This service to consist of a weekly examination of the frame, receiving signal system, landing sill and change mechanism and controller, greasing of pulley bearings and other necessary repairs, and to service during regular working hours of regular working days and following the 24 hours specified herein. In addition of above mentioned work, examination and repair of springs, counter weights, cables, gears, and other parts, floor projections, and roller shoes. Very respect and all work done, a receipt given when finished.

Work done subject to the terms and conditions printed on the back hereof which are hereby made a part of this agreement.

Respectfully submitted,
OTIS ELEVATOR COMPANY

Approved: John P. Burgett
Agent and Accepted in Duplicate

Approved: John P. Burgett
First State Trust and Savings Bank

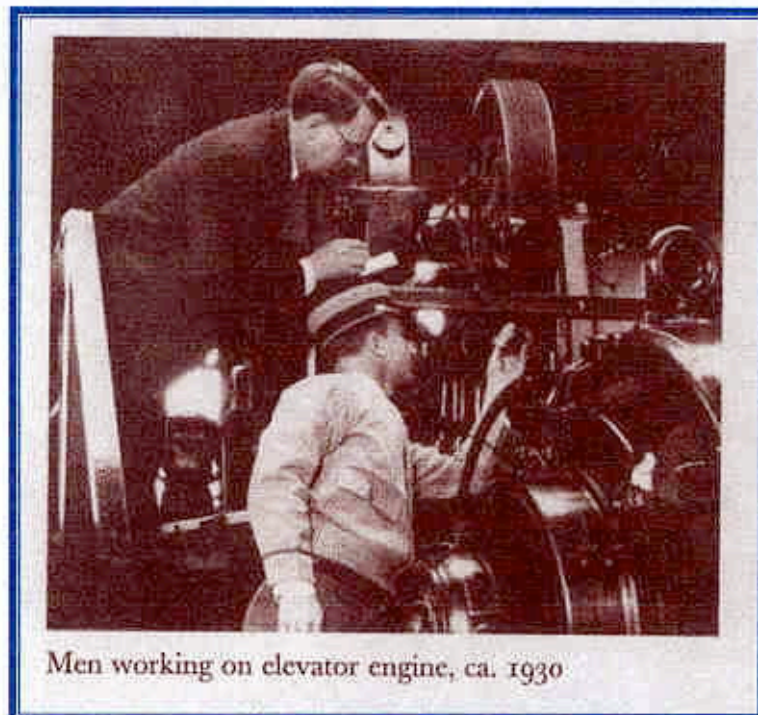
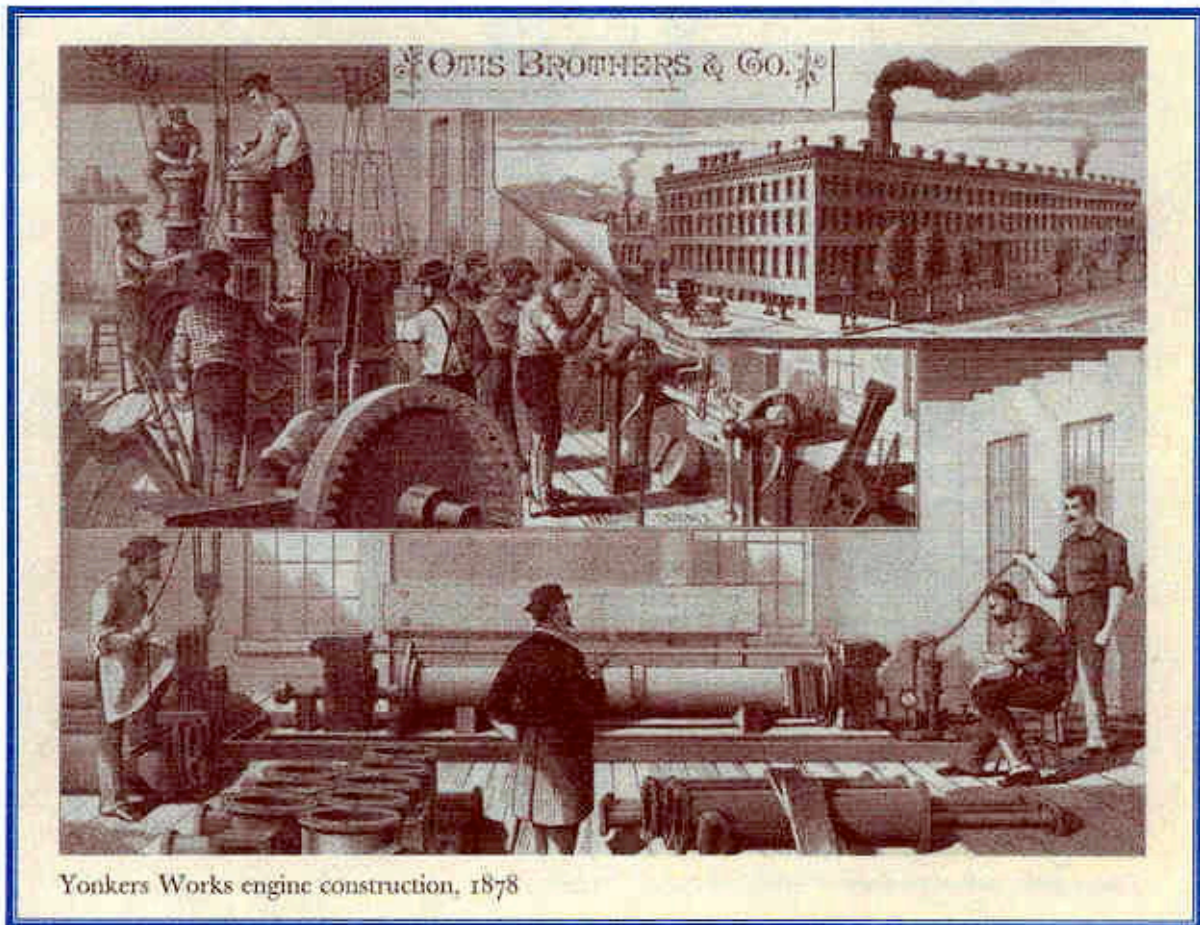
2-11-21

CT660 736

Otis maintenance contract, First State Trust & Savings Bank,
Springfield, Illinois, March 11, 1921

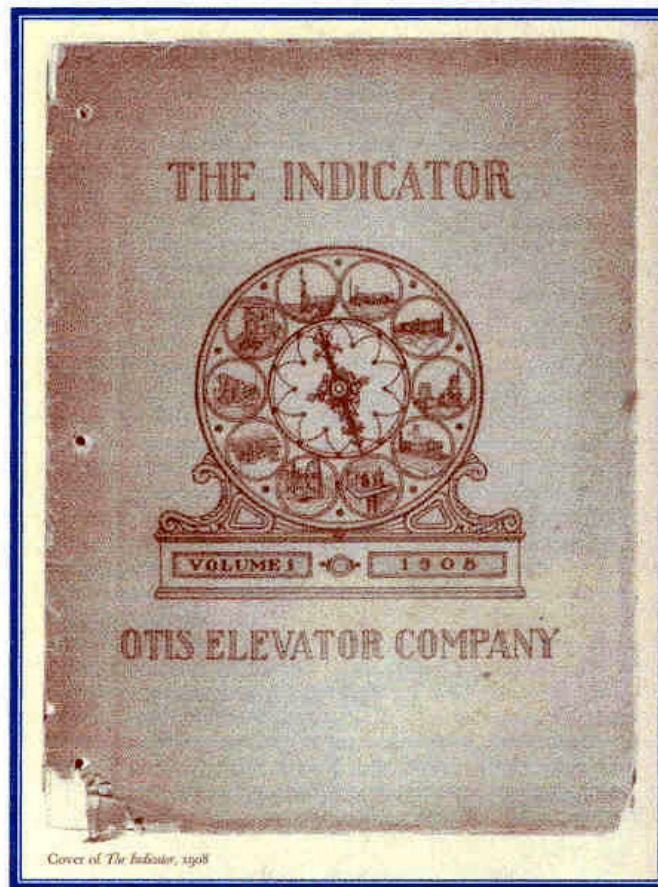
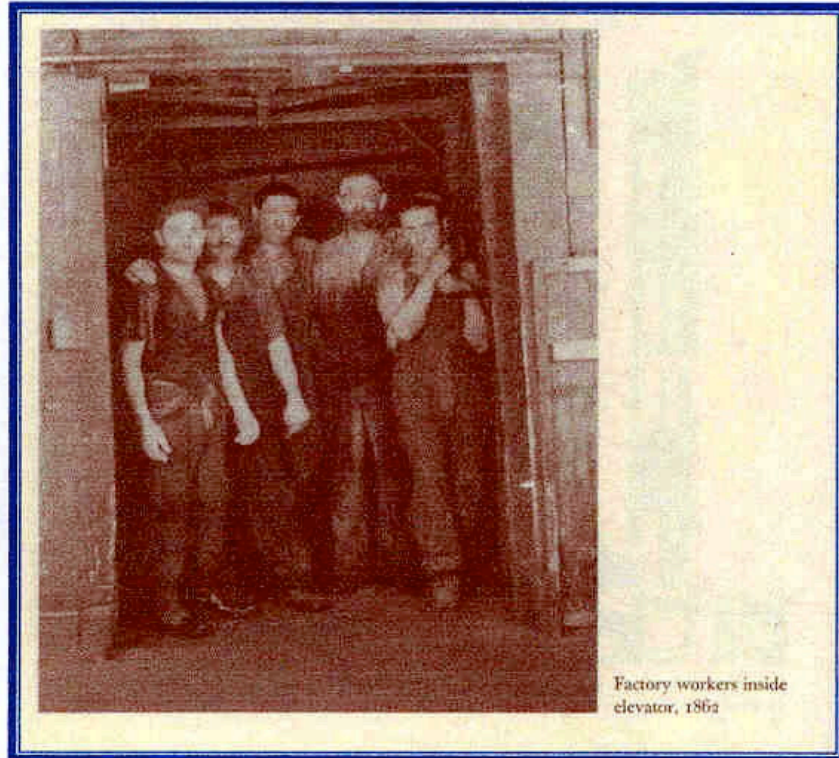
Otis Elevator Company [OT]

ELEVATORS



Otis Elevator Company [OT]

ELEVATORS



Otis Elevator Company [OT]

ELEVATORS

STANDARD HYDRAULIC ELEVATOR

For Passengers and Freight.

ADOPTED BY U. S. GOVERNMENT.

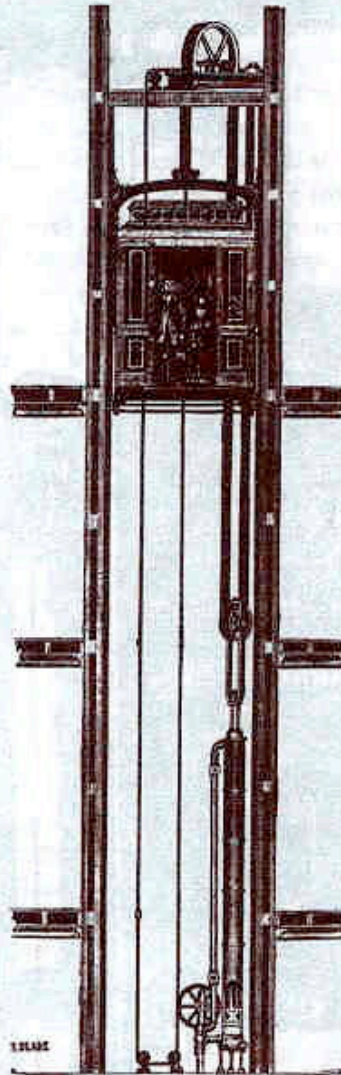
Upon Report of Eminent Experts appointed by the Secretary
of the Treasury.



SAFE, SIMPLE,
ECONOMICAL.

ADAPTED TO USE IN

HOTELS,
PUBLIC
BUILDINGS,
STORES,
OFFICE
BUILDINGS.
FLATS,
PRIVATE
HOUSES,
AND FOR
DUMB
WAITERS,
ALSO IN
WAREHOUSES
AND
FACTORIES.



OPERATED BY
Water Pressure

FROM
STREET MAINS,
OR FROM

A TANK in Upper Story,
or on Roof of Building,
OR
PRESSURE TANK IN BASEMENT

Always Ready for Use,
NIGHT OR DAY.

COSTS NOTHING

WHEN
NOT IN USE.
CAN BE MANAGED
BY ANY

LADY OR YOUTH.



Manufactured by OTIS BROS. & CO., Yonkers, N. Y.

Q. N. EVANS & CO., Agents for New England; also, makers and designers of Steam and
Water Heating Apparatus for public and private buildings.

N. Y. Office, 60 DUANE STREET.

Office, 72 SUDBURY STREET, BOSTON.

The Otis Standard Hydraulic Elevator, which operated by water under pressure, was
introduced in the 1870s. It is shown here in an 1882 advertisement. (*United Tech-
nologies Archive*)

ELEVATORS

ELEVATORS

OTIS AUTOMATIC ELECTRIC ELEVATOR FOR USE IN RESIDENCES

is an addition to the comfort of every member of the household; and at the same time increases the value and salability of property more than cost of installation. No house of pretension should be without one. We frequently install elevators in houses already built. It is not as much of an undertaking as one might think to thus bring an old house up-to-date. Write for blanks and specifications.

OTIS ELEVATOR COMPANY,
New York Office, 17 Battery Place

Branch Offices throughout the Country



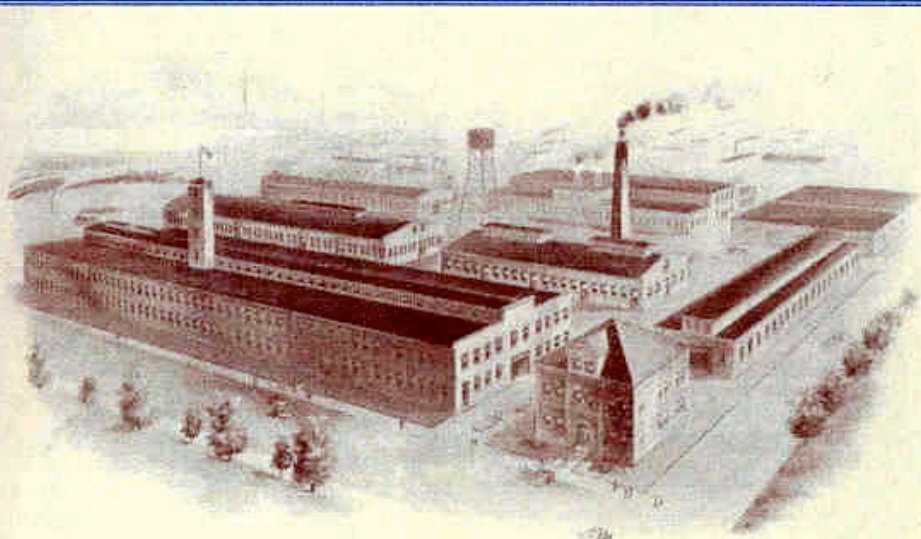
At the turn of the century Otis advertised its popular automatic electric elevator for use in residences. Automatic meant pushbutton control. (United Technologies Archive)

Otis Elevator Company [TSCO, 254]

ELEVATORS



Otis Elevator Works, Yonkers, New York, ca. 1908



Otis-Fensom Elevator Company's Works, Hamilton, Ontario, Canada, 1926



The Quincy Works, Quincy, Illinois, 1913

Otis Elevator Company [OT]