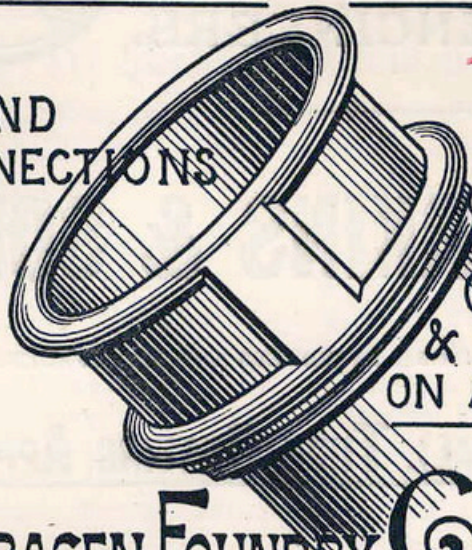


MACFARLANE'S CASTINGS

HOT WATER PIPES

AND
CONNECTIONS

1897



CATALOGUES
& PRICE LISTS
ON APPLICATION

SARACEN FOUNDRY, GLASGOW

- MACFARLANE'S** CONDUCTOR PIPES, for Rain-water, Stove, Drain, Soil, and Ventilating purposes. Plain and Ornamental.
- MACFARLANE'S** EAVE GUTTERS, for Rain-water, Building Cornices, Boundary Walls, Sheds, Valley Roofs, Water Conduits, &c.
- MACFARLANE'S** TERMINALS, FINIALS, CROSSES, BANNERETS, WEATHER-VANES, FLAGSTAFFS, BELFRIES, &c., in every style.
- MACFARLANE'S** RAILING, CRESTING, BALCONIES; FRIEZE, ALTAR-SCREEN, GALLERY FRONT, and TOMB RAILS, &c.
- MACFARLANE'S** COLUMNS, PILASTERS, BRACKETS, SPANDRILS, VERANDAHS, PORCHES, ARBOURS, CONSERVATORIES, &c.
- MACFARLANE'S** LAMP PILLARS, STANDARDS and BRACKETS, for Streets, Squares, Gateways, Stations, Bridges, &c.
- MACFARLANE'S** DRINKING FOUNTAINS, for Streets, Schools, Squares, Parks, Gardens, Stations, Market Places, &c.
- MACFARLANE'S** URINALS, in Cast Iron, for Streets, Courts, Schools, Railways, Factories, Public Works and Institutions.
- MACFARLANE'S** WATER-CLOSETS, in Cast Iron, for Schools, Railways, Factories, Public Works and Institutions generally.

ELECTRIC LIGHT PILLARS AND BRACKETS. ELECTRIC WIREWAYS.

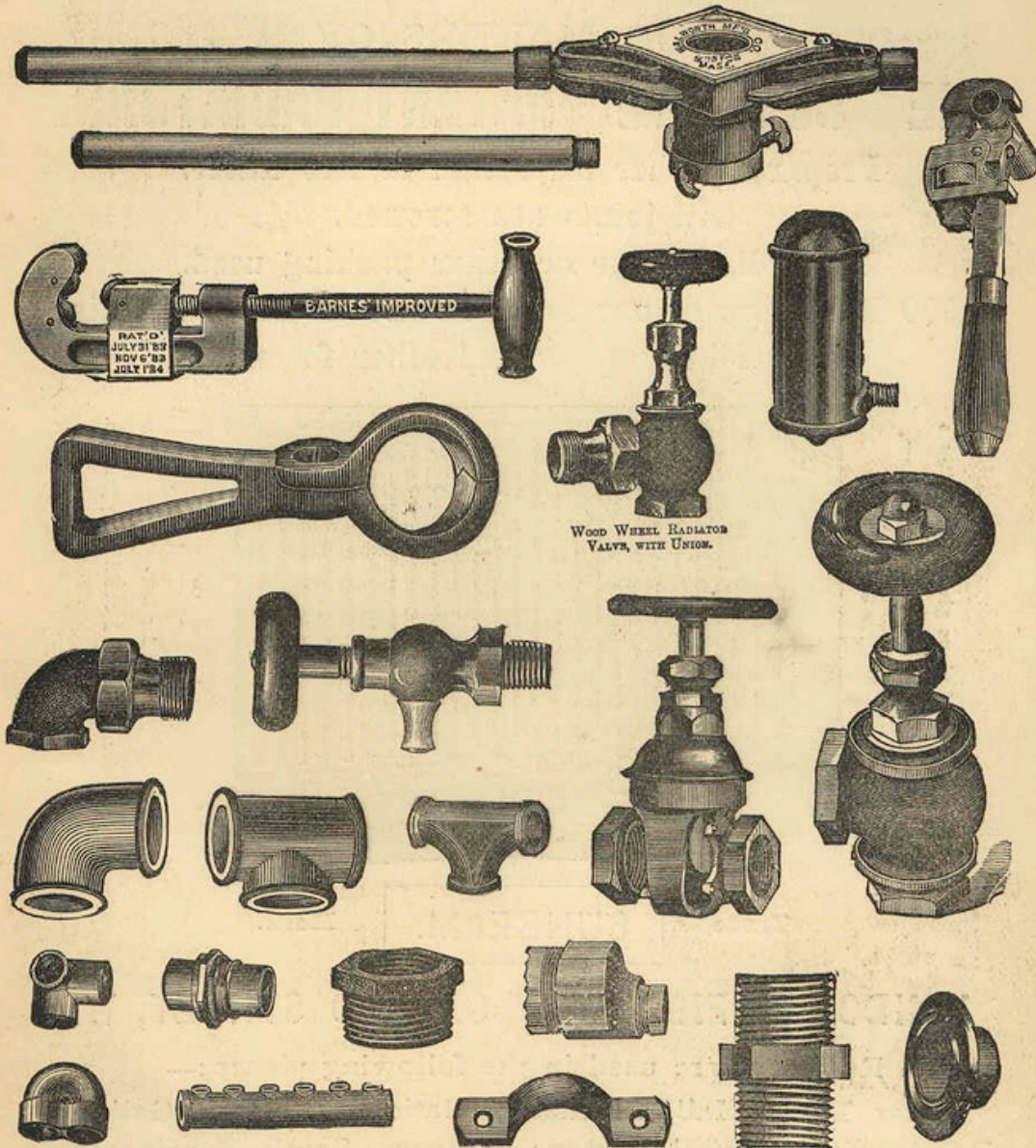
GLASS ENAMELLED DRAIN AND SOIL PIPES A SPECIALITY.

WALTER MACFARLANE & CO.,

Architectural, Sanitary, & General Ironfounders, GLASGOW.

H. MUNZING,

AMERICAN MERCHANT,
199 Upper Thames St., LONDON, E.C.



Headquarters of HOT-WATER, STEAM and GAS FITTERS'
PATENT AMERICAN TOOLS,
GUN-METAL and IRON VALVES,
CAST and MALL-IRON TUBE FITTINGS, &c. &c.

WRITE FOR LATEST DESCRIPTIVE CATALOGUE. **1897**

Government Contractors



for over 50 Years.

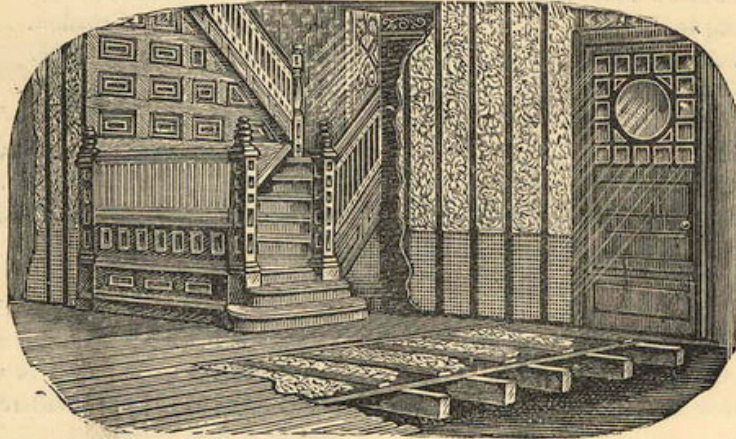
F. McNEILL & CO.

Actual Manufacturers of

SLAG WOOL (Silicate Cotton)

AND HAIR FELT.

THE BEST NON-CONDUCTORS EXTANT.



SLAG WOOL is Fire, Frost, Sound and Vermin Proof. Made up in a variety of forms for pipe covering, &c.

FULL PARTICULARS & SAMPLES FREE ON APPLICATION.

McNEILL'S SLAG WOOL is now being supplied to the Admiralty.



1897

SLAG WOOL
WORKS.

KIRKINTILLOCH, NEAR GLASGOW.

HEAD OFFICE &
FELT WORKS:

BUNHILL ROW, LONDON, E.C.

MILTON IRON WORKS GLASGOW.

TELEGRAMS—"McDOWALL STEVEN, GLASGOW."

MAKERS OF ...

ALL KINDS OF CAST-IRON

HOT WATER PIPES

WITH SPIGOTS AND
SOCKETS OR WITH
PATENT RUBBER
JOINTS.

Largest Variety of
FITTINGS
IN THE
TRADE.



Mc DOWALL STEVEN & CO., LTD.



BATHS,
STABLE

FITTINGS,

RAIN WATER

SOIL

AND SANITARY

CASTINGS.

ARCHITECTURAL AND

ORNAMENTAL

CASTINGS.

GREENHOUSE BOILERS.

Write for Catalogues.

LONDON WAREHOUSE:

4, UPPER THAMES STREET, E.C.

(xxx.)

1904

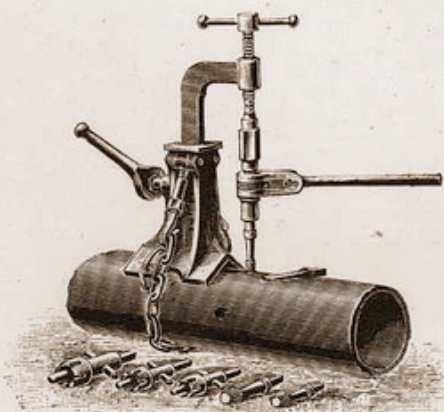
THOMAS CHATWIN

(ESTABLISHED OVER HALF A CENTURY),

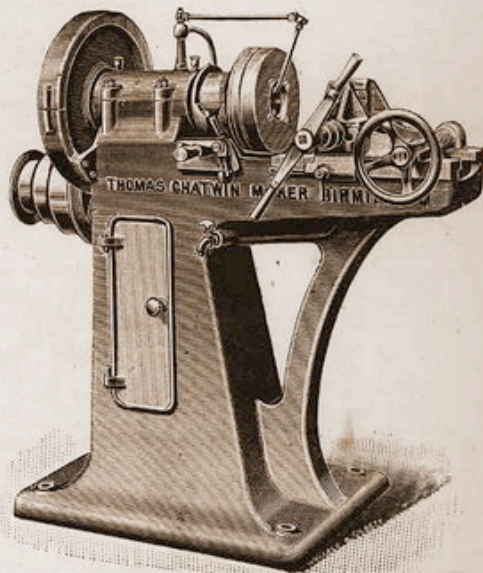
GREAT TINDAL STREET, BIRMINGHAM, ENGLAND

PATENTEE AND MANUFACTURER OF **STOCKS, DIES, TAPS and RIMERS,**

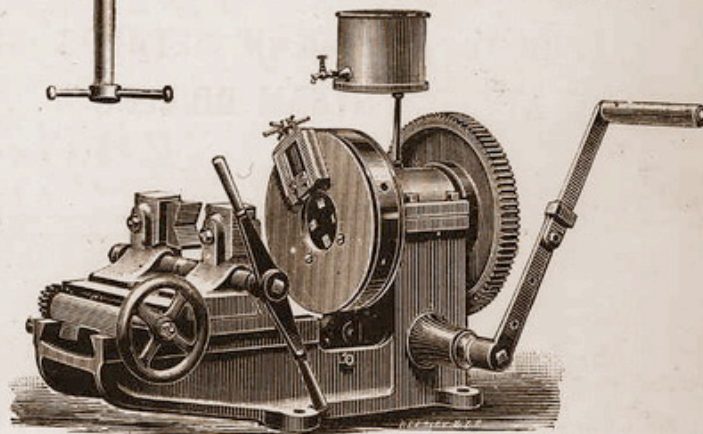
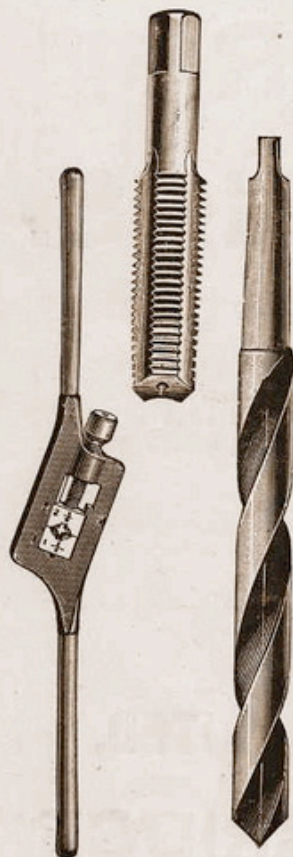
Improved **SCREWING MACHINES** for Hand and Power, Standard Cylindrical Gauges, Surface Plates, Twist Drills, Milling Cutters, Cut Gears, Clyburn, Budding, and other Spanners and Wrenches, Patent Tube Cutters, Tube Wrenches, Tube Vices, Main Pipe Drilling Apparatus, and General Tools for Engineers, Gasfitters, Hot Water Engineers, Plumbers, &c.



Drilling Stand for Main Pipes.



Power-Driven Bolt Screwing and Nut Tapping Machine, with Automatic Release Motion to the Dies.



Portable Hand-Power Screwing Machine with Self-feed Cutting off Attachment.

(xxviii.)

1904