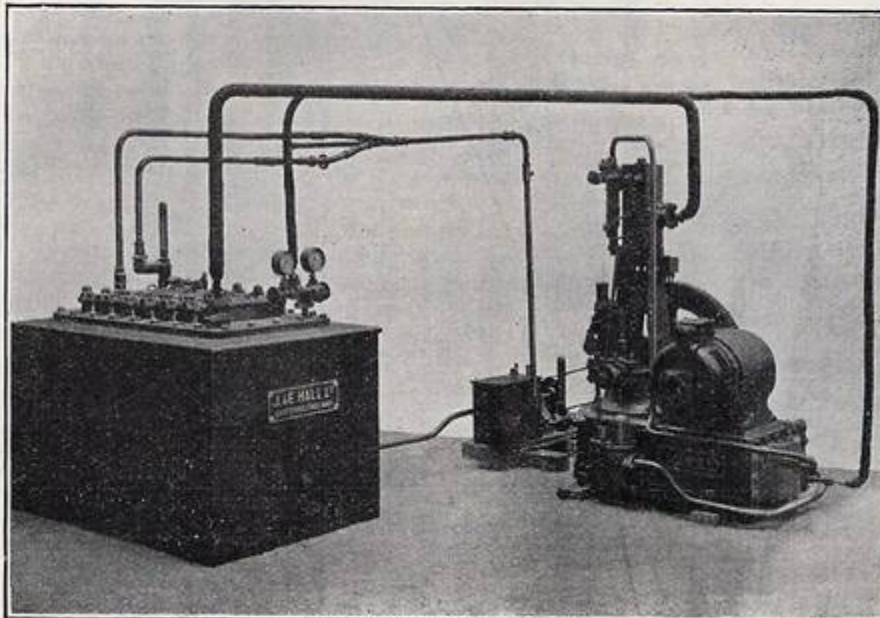


BRITISH REFRIGERATION ADVERTISEMENTS

*Taken from the handbooks "Cold Storage and Ice-Making,"
Bernard H Springett, Sir Isaac Pitman & Sons, London, 1921
and "Refrigerating and Ice-Making Machinery,"
A J Wallis-Tayler, Crosby Lockwood and Son, London, 1902*

REFRIGERATING & ICE-MAKING MACHINERY FOR COOLING INSULATING CHAMBERS FOR THE STORAGE OF PROVISIONS, COOLING LIQUIDS, MAKING ICE, etc.



SMALL ICE-MAKING PLANT.

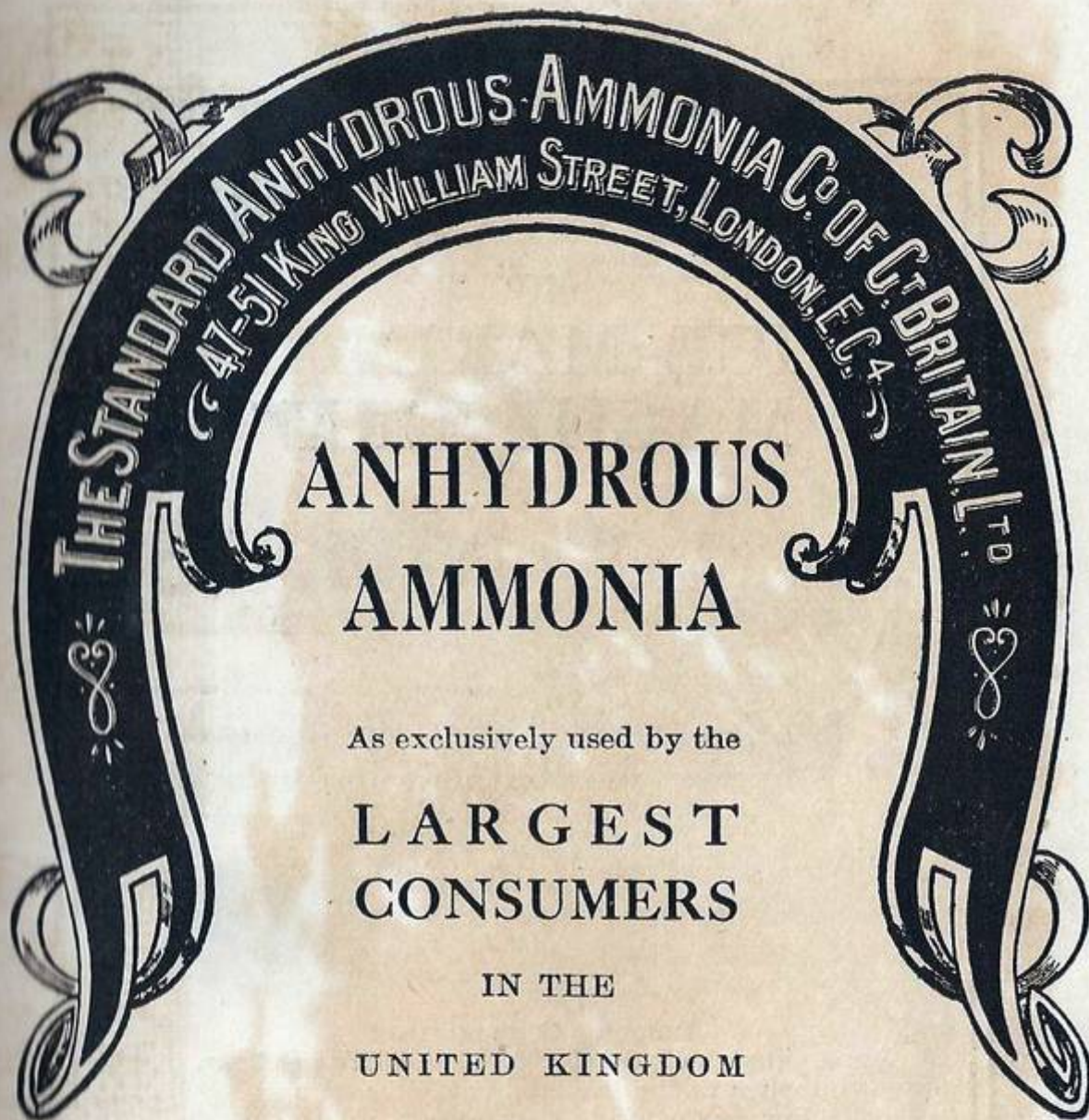
MANUFACTURED BY

J. & E. HALL
LIMITED

10 St. Swithin's Lane,
LONDON, E. C. 4

AND
DARTFORD IRONWORKS,
KENT.

*Catalogue and full
particulars given on
application.*



ANHYDROUS AMMONIA

As exclusively used by the

LARGEST
CONSUMERS

IN THE

UNITED KINGDOM

SUPPLIERS TO THE ADMIRALTY
MAXIMUM EFFICIENCY, MINIMUM COST

IMMEDIATE DELIVERY

Telegrams :
"ANHYDROUS, CANNON, LONDON"

Telephones :
1729 AVENUE (3 LINES)

*Everyone interested in Ice-
making and Cold Storage*
SHOULD READ



**An Illustrated Review of the Ice-making
Cold Storage and Refrigerating Industries.**

THE oldest and largest British Journal devoted to refrigeration. Contains articles on practical and technical subjects and expert contributions from correspondents at home and abroad.

PUBLISHED MONTHLY (last Thursday).

Subscription Rate—15s. per annum post free.
Money orders and cheques should be made
payable to ILIFFE & SONS, LTD.

A specimen copy will be forwarded to intending subscribers
on receipt of 1s. 3d.

Publishers : ILIFFE & SONS LTD.
20, TUDOR STREET, LONDON, E.C.4

On Admiralty List. Telephone : Avenue 1223

JOHN KIRKALDY LTD.

101 LEADENHALL STREET,
LONDON, E.C.3

MAKERS OF

REFRIGERATING MACHINERY

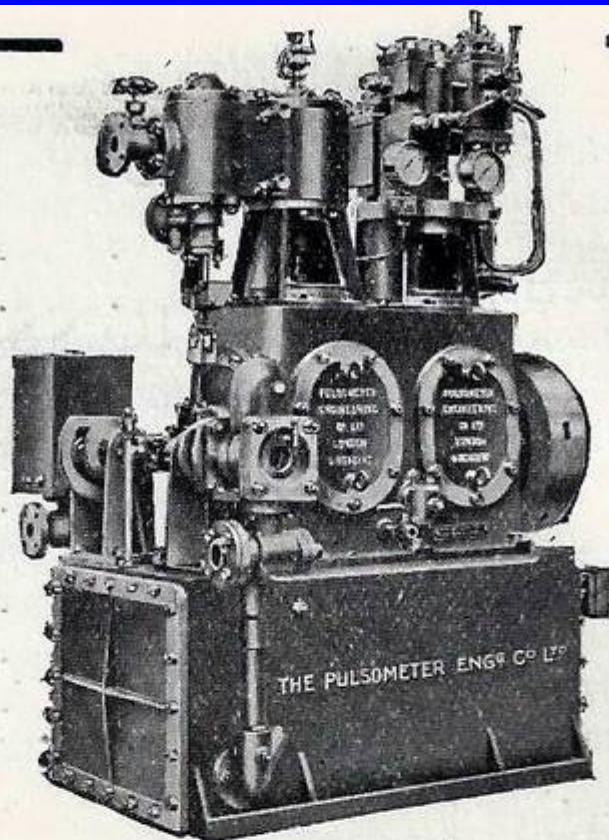
ICE MAKING AND COLD STORAGE,
ICE-CREAM MAKING MACHINERY

Machines known throughout the world
for their

SIMPLICITY
RELIABILITY
AND
EFFICIENCY

EASY TO WORK. SMALL WORKING COST

Write for our Catalogue which is sent gratis



Self contained Ice Machine

Ice Making & Refrigerating Machinery

On the $N.H_3$ & CO_2 Systems

OUR machines have been specially designed to give the least possible amount of trouble in working and to secure a minimum of repairs. Proof of our claims is found in the repeat orders we receive.

WRITE FOR LIST No. 900

Pulsometer Engineering Co. Ltd

11 Tothill Street
LONDON, S.W.1

Nine Elms Ironworks
READING

REFRIGERATION

Cold Storage & Ice Making

ON THE AMMONIA AND CO₂
COMPRESSION SYSTEMS
FOR LAND AND MARINE
: : INSTALLATIONS : :

■ ■ ■ ■

HASLAM

Foundry & Engineering Co.,
Ltd.

Incorporated with PONTIFEX & WOOD

UNION FOUNDRY, DERBY

541-543 SALISBURY HOUSE,
LONDON WALL, E.C.2

ZERO, DERBY

778 & 779

TELEGRAMS :

TELEPHONE;

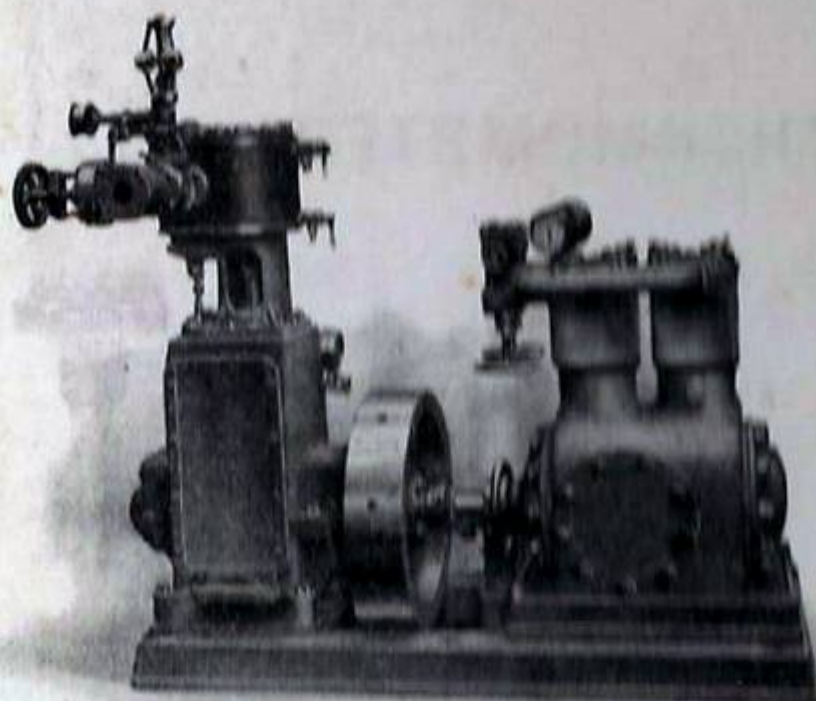
PONTIFEX, LONDON

862 LONDON WALL

NH_3 and CO_2
REFRIGERATING PLANT

FOR

Cold Storage, Ice-making, Dairies, Breweries,
and other Industrial and Chemical purposes.



418

STEAM DRIVEN NH_3 COMPRESSOR,
CAPACITY 7 TONS REFRIGERATION.

PETER BROTHERHOOD, Ltd.
PETERBOROUGH

AND

Central House, Kingsway, London, W.C.2

Refrigerating & Ice-Making Machinery

ON THE

LINDE AND LIGHTFOOT SYSTEMS.

PLANTS FOR

CHILLING, FREEZING & COLD STORAGE.

Full Particulars on application.

About 5,000 Machines sold on the Linde and Lightfoot Systems.

2,300 for Breweries.

550 for Ice Making.

110 for Dairies.

100 for Chemical Works.

20 for Sugar Refining.

850 for Cooling Stores for Meats and Provisions.

400 for Refrigeration of Ship's Hold and Stores.

40 for Candles and Stearine Making.

630 for Sundry Uses.

THE LINDE BRITISH REFRIGERATION CO., Ltd.,

35, QUEEN VICTORIA STREET, LONDON, E.C.

TELEGRAPHIC ADDRESS: "SEPARATOR, LONDON."

TELEPHONE NOS. { 5841 } BANK.
 { 5842 }

BRANCH OFFICES:

AUSTRALIA—97, Pitt Street, Sydney.

INDIA—138, Baliaghata Road, Calcutta.

NATAL—J. H. Nicholson, Durban.

EASTERN PROVINCE & ORANGE

RIVER COLONY—Mangold Bros.,
Port Elizabeth.

NEW ZEALAND—Hawkes Bay Foundry, Port Napier.

CANADA—301, St. James's Street, Montreal.

CAPE COLONY—Strand Street, Cape Town.

RHODESIA—Sykes & Co., Bulawayo.

ANHYDROUS AMMONIA.

As exclusively used by the
LARGEST CONSUMERS
in the United Kingdom and Colonies.

**The Standard Anhydrous Ammonia Co.
of Great Britain, Ltd.,**

85, GRACECHURCH STREET, LONDON, E.C.

TELEGRAMS—ANHYDROUS, LONDON.

TELEPHONE—533 AVENUE.

ICE

*Our Machines are
strong, efficient
and easy to erect
and manage.*

—
AND AT
61 & 63, Queen
Victoria Street,
E.C.

Very
successful
in hot
climates as
well as at home.

WRITE FOR
LIST No. 125.

COLD STORAGE

Dulsometer Engineering Co., Ltd.
Nine Elms Ironworks, Reading.

Established 1833.

Government Contractors for over 50 years.

F. McNEILL & CO.'S**DRY HAIR FELT**

For all insulating purposes.

PATENT PIPE COVERINGS,

For economising heat or cold.

SLAG WOOL

IS THE

BEST INSULATOR.**McNEILL'S SLAG WOOL**

IS THE

BEST SLAG WOOL.

Used in the

Leading Cold Stores,

SS. "Celtic," the largest ship in the world,

H.M.S. "London," the largest battleship.

*Full particulars and samples from the actual manufacturers,***F. McNEILL & CO.,****BUNHILL ROW, LONDON, E.C.***Telephone: No. 522 LONDON WALL.**Telegrams: "EYEBALL," LONDON.*

Ice-Making and Refrigerating Machinery

ON FOUR DIFFERENT SYSTEMS.

|| DRY AIR,
|| AMMONIA COMPRESSION,
|| AMMONIA ABSORPTION,
|| CARBONIC ANHYDRIDE (C.O.).

*Used by all the leading COLD STORAGE
COMPANIES, SHIP OWNERS and BREWERS
throughout the World.*

CATALOGUE AND ESTIMATES ON APPLICATION.

THE
HASLAM Foundry & Engineering Co.,
Limited,

INCORPORATED WITH

PONTIFEX & WOOD, LTD.,

UNION FOUNDRY:
DERBY.

**34, New Bridge Street,
LONDON E.C.**