

TELEPHONE :- HOLBORN 5655.

CONTRACTORS TO H. M. OFFICE OF WORKS, THE ADI

SAUNDERS & TAYLOR LTD.
ENGINEERS.

DIRECTORS
S. M. I. SAUNDERS, B.Sc., A.M.I.Mech.E.
J. NEWMAN ELLIS, M.C., B.Sc., A.M.I.Mech.E.

HEAD OFFICE:
PRAED RD., TRAFFORD PARK,
MANCHESTER.

MANUFACTURERS OF
WARMING,
VENTILATING,
DRYING,
DUST REMOVING
PLANTS, ETC.

Our ref. AFB/EMH.

Kindly Note New Address :
11 DYERS BUILDING,
HOLBORN,
LONDON, E.C. 1.
New Telephone Nos.
Holborn 9931-9932.

1st March, 1934.

H. C. D. Cooper, Esq., A.R.I.B.A.,
"Cooper's",
Eversley,
Hants.

Dear Sir,

We have very much pleasure in enclosing herewith our booklet on Kryptic Panel Heating, in response to your request, and trust you will find it of interest.

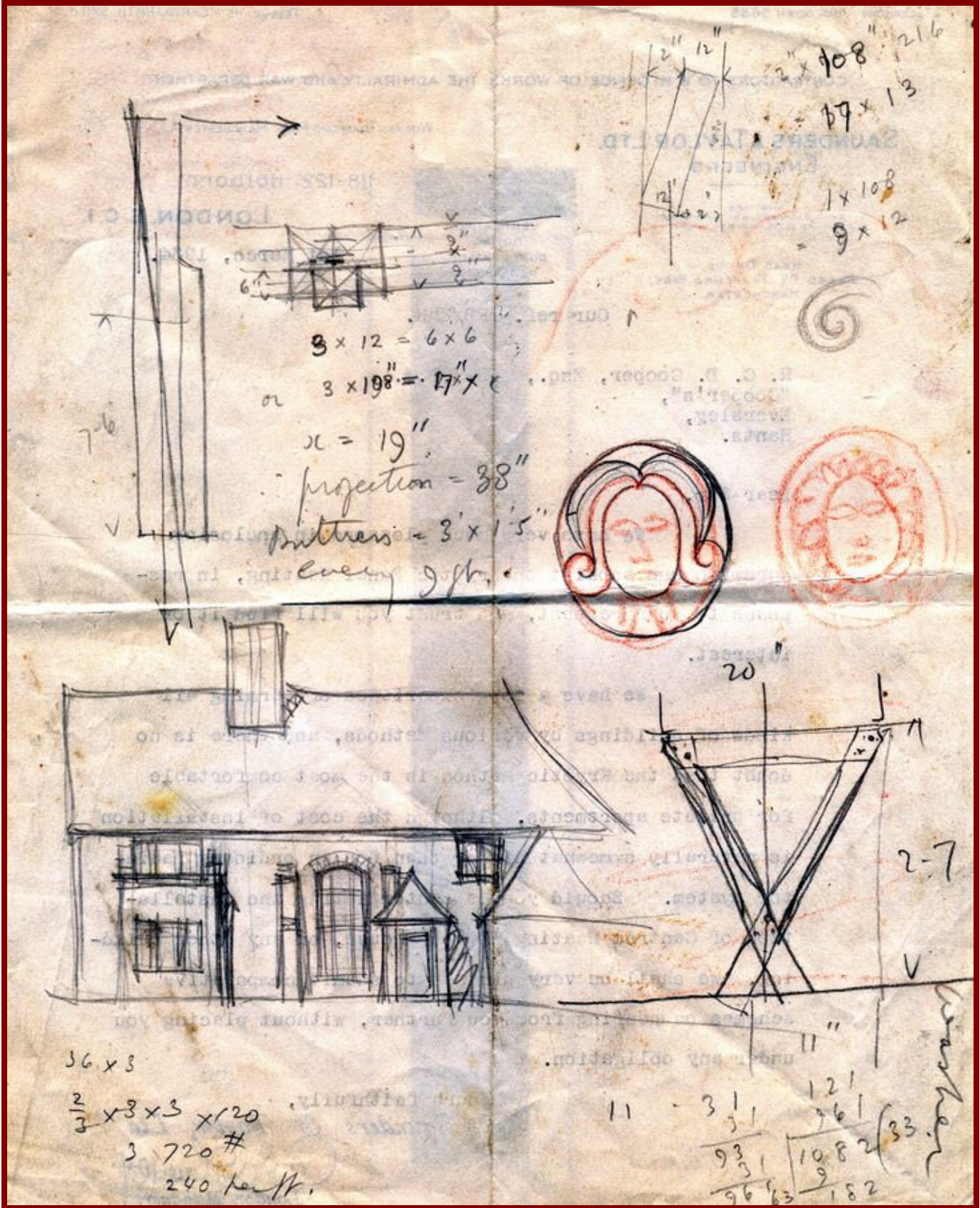
We have a long experience of warming all kinds of buildings by various methods, and there is no doubt that the Kryptic Method is the most comfortable for private apartments, although the cost of installation is naturally somewhat higher than for an ordinary radiator system. Should you be contemplating the installation of Central Heating in your house, or any other building, we shall be very pleased to submit comparative schemes on hearing from you further, without placing you under any obligation.

Yours faithfully,

Saunders & Taylor Ltd.

C. J. Guedey
London Manager.

Covering letter of 1934 with Catalogue



Scribble on back of letter

KRYPTIC PANEL HEATING



RADIANT WARMTH

The Catalogue

INTRODUCTION

WHY is it that an open fire is the pleasantest form of heating—when you can get near it and the room is not too big for the fire? It is because the fire gives out *pure radiant heat*. Any air heated directly by the fire goes up the chimney and produces ventilation. Even if the windows are shut the air must come in somewhere or there would be no draught up the chimney to carry off the smoke and pollute the atmosphere outside. In very cold weather this draught is often felt sweeping across the floor. The heat from the fire warms the sides of the fireplace, the chimney breast and the furniture and the air is warmed by contact with these, but the most comforting warmth comes directly from the fire to the occupants of the room by pure radiation.

Ordinary radiators warm the air and only produce direct radiation to a limited extent, so that although they are more effective than fires in giving distribution of warmth and preventing draughts there is a tendency to overheat the upper part of the room in order to obtain comfortable conditions near the floor.

In "Kryptic" Heating we claim to have produced *the pleasant warmth* of open fire heating without its disadvantages. With the "Kryptic" Skirting radiant warmth is directed out into the room *at floor level*.

It is better than floor heating, because it does not overheat the soles of the feet. It is better than ceiling heating because the heat rays do not strike the head. It produces just sufficient convection or air movement to avoid stagnation. It can be applied either to existing rooms or new buildings and can be connected to the same system as ordinary radiators placed on landings and in corridors, for which they are well suited. If your flat or office is warmed from a big central heating system the radiators can easily be replaced by "Kryptic" Heating.

It lends itself particularly well to automatic control, as it cools down or warms up quickly in response to the shutting or opening of a valve.

It is economical, as by its use comfort can be attained with the consumption of less fuel than is the case with ordinary radiators.

Finally, although the design of hot water radiators has greatly improved of late years as regards appearance and space occupied, these two considerations are in many cases an obstacle to complete satisfaction. "Kryptic" Skirting is entirely unnoticeable.

"KRYPTIC" HEATING therefore scores at all points—COMFORT, CONVENIENCE, ECONOMY and APPEARANCE.

K R Y P T I C H E A T I N G



The First Application

This photograph shows the first use of "Kryptic" Skirting, as applied to a private house in 1914.

The idea then was merely to produce some means of introducing Central Heating without the use of unsightly pipes and radiators, and it was not immediately realized that the kind of warmth produced was really more healthful and pleasant.

The skirting is formed from two steel plates, the one at the back having the edges bent over and welded to the front plate so as to form a narrow waterway, through which hot water is circulated in the same manner as in an ordinary radiator system.

This narrow waterway, measuring about one inch from back to front, takes the place of the ordinary skirting board, being held in position by suitable mouldings.

"Kryptic" Skirting has been installed in many high-class buildings since, and never once has anything but complete satisfaction been the result. There has been no case of damage to structural materials or decorations.

PRODUCES RADIANT WARMTH

K R Y P T I C H E A T I N G



Managing Director's Office
Messrs. WARDLE & DAVENPORT LTD., Leek, Staffs

Architects :
Messrs. Longden and Venables, F. and L.R.I.B.A.

This fine room is entirely warmed by means of "Kryptic" Skirting, the fire at the end being of the "Magicoal" type, designed mainly to give a cheery appearance.

It is impossible for the eye alone to discover the real source of warmth in the room, and yet the heat is derived from the same hot water system as is used to warm the factory.

The effect is remarkable inasmuch as the room is comfortable even with an air temperature as low as 58 degrees Fahrenheit.

PRODUCES RADIANT WARMTH

K R Y P T I C H E A T I N G



The Board Room
Messrs. WARDLE & DAVENPORT LTD., Leek, Staffs.

Architects :
Messrs. Longden and Venables, F. and L.R.I.B.A.

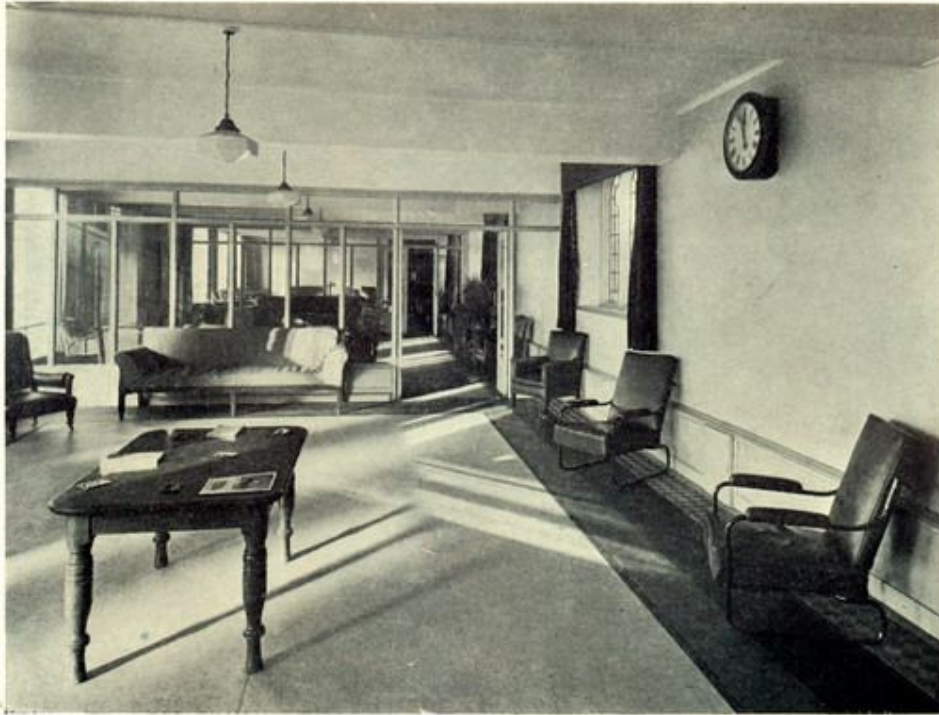
Here "Kryptic" Skirting is adopted in a room entirely panelled in figured walnut, the skirting being painted to match the walnut, but the skirting may be maintained at any hot-water temperature without risk of damage to the wood.

There is a feeling of comfort combined with freshness, the slight convective effect of the skirting giving just sufficient air movement to avoid stagnation.

The skirting radiates warmth at floor level.

PRODUCES RADIANT WARMTH

K R Y P T I C H E A T I N G



Southport Convalescent Hospital
RECONSTRUCTION OF MEN'S QUARTERS

Architects :

Messrs. Francis Jones and H. A. Dalrymple, F. and A.R.I.B.A.

Along the wall on the right-hand side of this room is fixed the latest form of "Kryptic" panel heating.

The original type of "Kryptic" Skirting can only be conveniently made up to a depth of about eight inches, as the flat plates are liable to bulge under the pressure of the water if made deeper.

The panels shown in this photograph are constructed by welding special D-shaped tubes to the back of steel plates. The hot water circulates through the tubes and transmits heat to the steel plate by conduction.

This method of construction permits panels of varied sizes and shapes to be made with perfectly smooth surfaces. Their form is only limited by the sizes of steel plates obtainable.

PRODUCES RADIANT WARMTH

K R Y P T I C H E A T I N G



Southport Convalescent Hospital RECONSTRUCTION OF MEN'S QUARTERS

Architects :
Messrs. Francis Jones and H. A. Dalrymple, F. and A.R.I.B.A.

In this case "Kryptic" panels are used under windows to give both radiant and convected heat. The low sills precluded the use of other standard products, but these panels were constructed to fit the space available. Air is allowed to circulate behind them to counteract draughts from the windows.

The comfort effect in these rooms is remarkable with quite a low surface temperature of the "Kryptic" panels, due to the distribution of the surface almost completely round the room.

"Kryptic" panels cost less than "Kryptic" Skirting, but a greater expanse is necessary for the same warming effect.

We prefer to give definite quotations for particular requirements after inspecting rooms and seeing plans, in order to be sure that the best positions and requisite amount of surface are obtained.

PRODUCES RADIANT WARMTH

CONCLUSION

OUR experience of warming and ventilating all classes of buildings extends over more than half a century—Churches, Theatres, Banks, Offices, Workshops, large Institutions and private houses.

The problem of giving the man of moderate means the best possible value for his outlay receives the same careful attention as the design and installation of the very latest forms of scientific automatically controlled heating and air conditioning.

The science of making buildings comfortable and healthy for the occupants is very progressive and we try to keep ourselves abreast of the times and even to lead a little, without undue bias towards any particular system, but selecting the system best adapted for the particular needs of the client, or interpreting his own ideas to the best advantage.

Our men are accustomed to the special care required in the installation of apparatus in existing houses, so as to cause the minimum of inconvenience and preserve the decorations unimpaired.

An enquiry entails no obligation and we are pleased to make suggestions or prepare approximate estimates for buildings in any part of the country on receipt of rough sketch plans and afterwards to visit the house or other building and prepare a detailed scheme if our preliminary suggestions meet with approval.

