

# CIBSE HERITAGE GROUP

*Newsletter No.44*

*December 2020*

## THE GROUP WORKING PARTY DURING LOCKDOWN



**Andrew  
More**  
Chairman



**Neil  
Sturrock**  
Vice Chairman



**Geraldine  
O'Farrell**  
Hon. Secretary



**Brian  
Roberts**  
Archivist / Editor



**Frank  
Ferris**  
Webmaster

The year 2020 has been very unusual, overshadowed by bad and sad information. The onset of the Covid-19 virus restrictions imposed on the population caused the cancellation of our AGM, our Committee Meetings and visits to historic buildings. No further activities have been planned until the virus situation eases.

Sad news received by the Group told of the deaths of two Members, Gary Bennett in December 2019 due to a road traffic accident and Geoff Brundrett in June due to ill health. Two Members whose contributions to the Group will be greatly missed.

But a small Group Working Party has continued to function. Andrew, Neil and Geraldine have liaised with CIBSE HQ, kept HG members and Twitter Followers up to date with the latest news, circulated electronic Newsletters and updated Members on additions to our website while responding to queries on a variety of heritage topics. Brian and Frank have written and published four Heritage Revisited booklets with others in course of preparation. Brian has written six Special Newsletters (issued monthly in electronic format) as a tribute to the work of the NHS since its foundation in 1948, while another eight Large E-Books have been added to our website.

The Group has received donations of technical books from three late CIBSE Members, Graham Manly, Alan Field and Geoff Brundrett which are now being catalogued prior to transfer to the Heritage Group Archive held at Cardiff University Library. Another collection donated by Ian Cook will also be added to our Archive. Member Mike Barber is also donating his library of books to the Group's Archive collection in Cardiff.

The Group Calendar for 2021 will be printed as usual in hard copy, the theme being historical humour and cartoons relating to the building services engineering industry.

Edith Blennerhassett and Frank are completing a project to convert into Power Point presentations five of the 35 mm slide HEVAC displays from the 1980s and 90s originally prepared by Neville Billington and Brian.

The Group thanks Historic England for its continuing support in sponsoring the Calendar and Newsletters.

**It is hoped that 2021 will be a more normal year enabling the activities of the Group to resume as they have done for the past forty-seven years.**

# REMEMBERING GEOFFREY BRUNDRETT



**Geoff receiving his CIBSE Gold Medal in October 2017**

Geoff Brundrett passed away in June after a long struggle with health issues.

After obtaining his BEng Geoff joined Leyland Motors and then received his PhD at the University of Liverpool. He then joined the CEGB's Marchwood, Hampshire Laboratories and then the Electricity Council Research Centre at Capenhurst, Cheshire where he became the head of the Environmental & Building Division. A move to academia saw him back at the University of Liverpool as a visiting professor as well as a senior fellow at the University of Wales.

Geoff received world recognition for his leadership in the understanding of the control of Legionella for which he received CIBSE's Bronze Medal in 1992. Later he was to receive both a Silver Medal in 2004 and Gold Medal in 2017 from CIBSE for his work on behalf of the Institution and the industry at large.

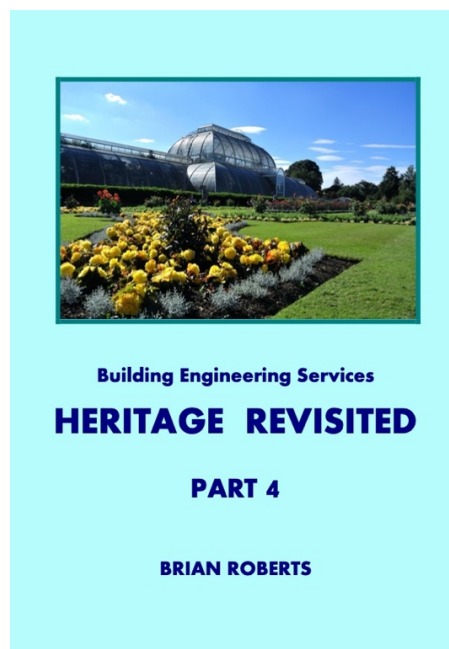
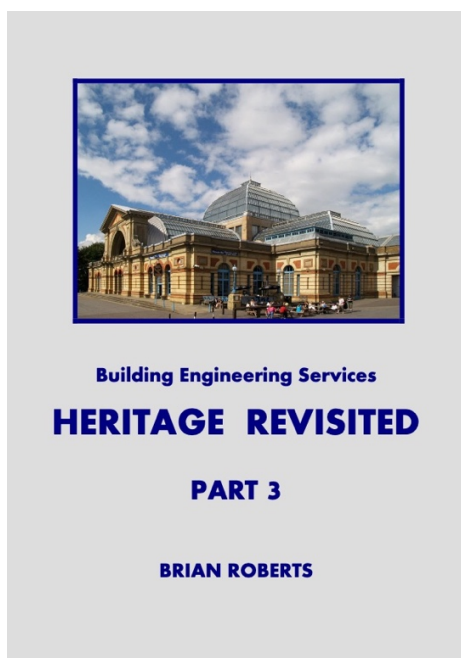
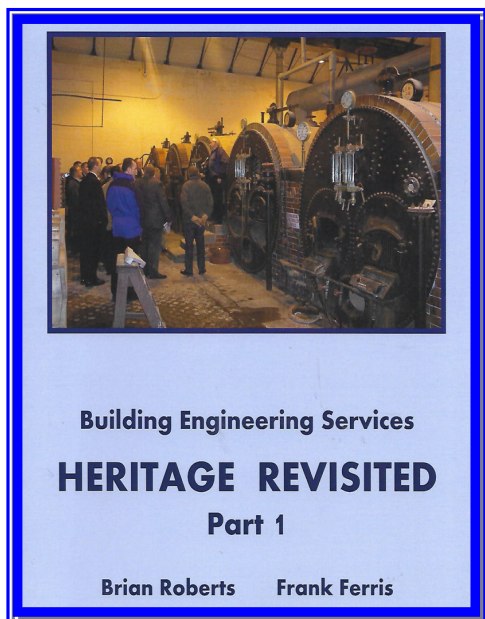
Geoff represented engineers on the Council for the Royal Society for the Promotion of Health eventually becoming its Chairman. He co-wrote ASHRAE's *Humidity Control Design Guide* and actively researched aspects of aircraft cabin environments.

Geoff Brundrett was CIBSE President in the Institutions centennial year, 1997. It was because of his intervention that the CIBSE Heritage Group were able to publish and distribute a commemorative book, *'The Quest for Comfort'* written by Brian Roberts, an historical review of the HEVAC industry. Geoff subsequently became an active member of the Heritage Group. In his introduction to *The Quest for Comfort*, he wrote "CIBSE was born with the aim of improving the comfort of mankind by openly discussing topics of uncertainty, by sharing professional knowledge and by spreading this knowledge through publications and lectures". Finally, Geoff added "It is hoped you will enjoy learning something of the heritage passed to today's building services engineers as they anticipate the challenge of the next millennium". Oh, how we could do with his likes at this troubled time!

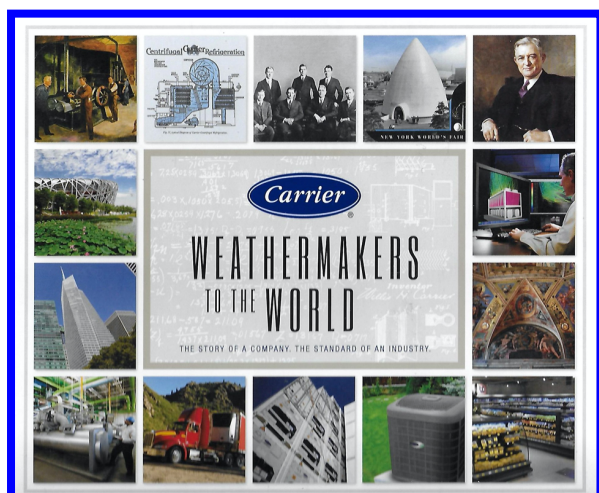
**Paul G. Yunnie, CIBSE Heritage Group.**



# ADDITIONS TO HERITAGE GROUP ARCHIVE



Cover detail above of four of the new Heritage Group publications published as a limited edition series



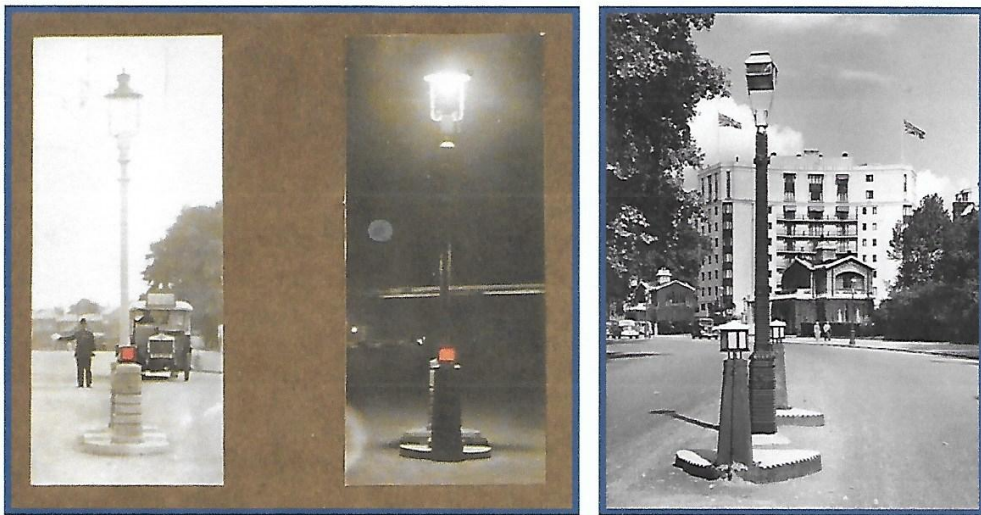
Above are two additions for our Cardiff Archive, while three important Collections from the estates of the late Graham Manly, Alan Field and Geoffrey Brundrett are being catalogued before transfer to our Cardiff Archive



## GASLIT ROAD SIGNS: William Sugg & Co. Ltd.

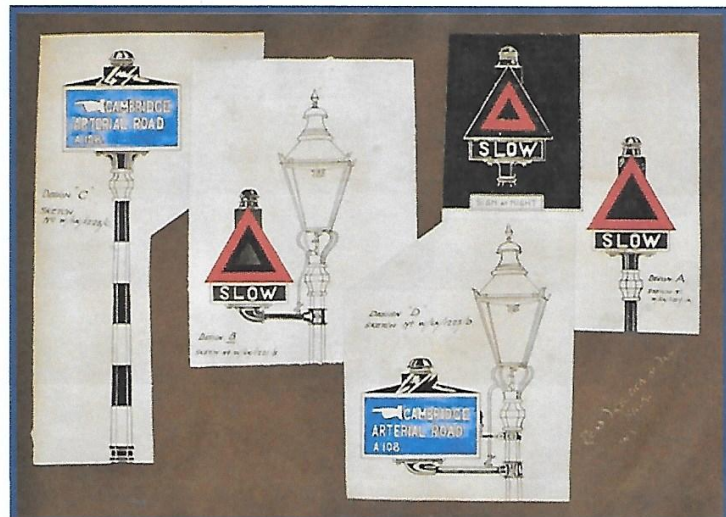
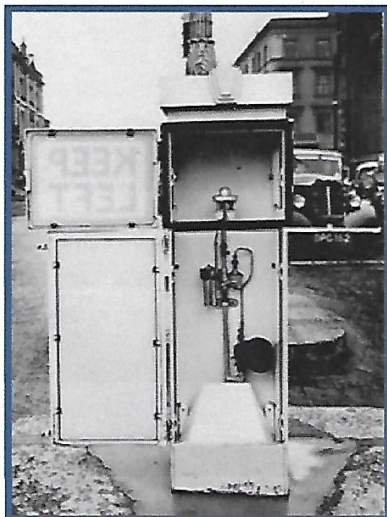
Amongst the unlikely applications for gas lighting are various forms of road signs. Obviously, gas lamps on posts were widely used from the very beginning but the amount of traffic was very small and, what there was, was very slow. Even 'rules of the road' did not exist in a mandatory fashion until the Highway Code in 1931. This of course was because of the huge growth of motorised traffic and the number of accidents.

By the 1930's the use of electricity had grown into a more practical form with the 'light bulb' and electric road signs began to appear. Not to be outdone, the gas appliance manufacturers had always competed in anything new brought out by 'the electricians' as gas street lighting was still holding its own and the gas industry would support anything that would sell more gas. One of the first items was the Keep Left sign in association with a gas lamp mounted on a central island. In this first example you can see that there is no 'instruction', just a red warning light but you can see that the approaching bus has solid tyres. The lamp is an Upright Rochester.



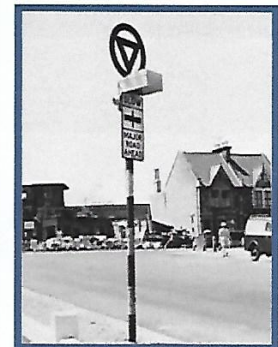
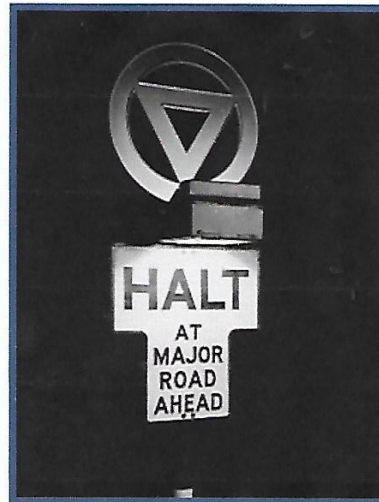
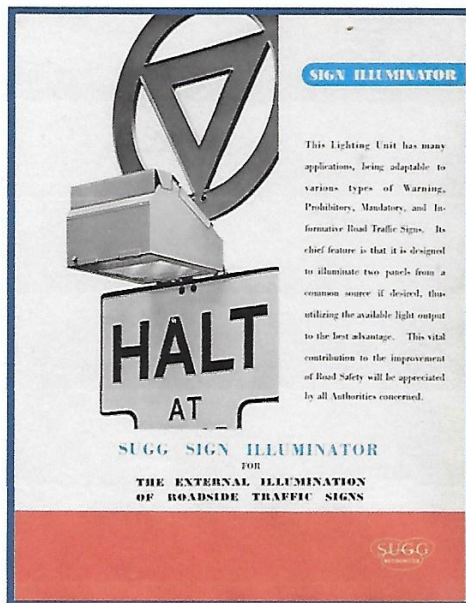
This arrangement has not changed a lot in the second picture, just a modern gas lamp but still a simple lit bollard. Gp B Southport Lamps, Hyde Park

The illuminated Keep Left sign made use of conventional street lighting burners along with a time clock and Comet ignition. The design options on the right illustrate the early thinking for signs.

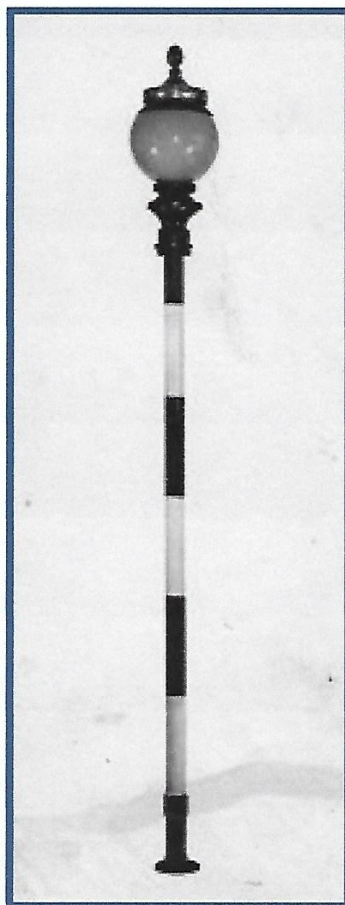
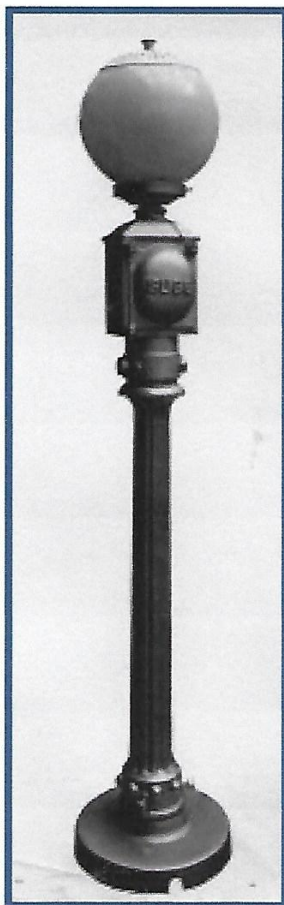




The 'Sign Illuminator' was applicable to anything relevant as here for Halt and Slow signs



Whilst these items are pretty straight forward, the introduction of the Belisha Beacon with its flashing light must have been something of a challenge. I know that the company did have operating models but I have not found an example of them actually in use – unless someone else knows! This is the only photographic evidence.



The far-left photo is of a sample Belisha beacon that was shown on various exhibition stands. The box below the beacon is clearly based on the similar Rochester upright base casting. This column is short and not designed for actual use.

The right-hand picture is a full-size version but its application is unknown.

Contributed by Chris Sugg

# SPECIAL ELECTRONIC NEWSLETTERS

## CIBSE HERITAGE GROUP

Special Newsletter No.1 April 2020

### TO ALL NHS STAFF - THANK YOU

*This Special Group Newsletter is our Tribute to the Staff of our National Health Service for their incredible response and expertise during the current coronavirus pandemic. We recognise, as shown in the following selected historical photographs, from the past century to the present day, the contribution and dedication given to the healthcare of this Nation by the millions of Doctors, Nurses and support staff.*

**Stay Home - Stay Safe**



Thank you to all the Nurses and Support Staff



And a big thank-you to the Doctors and Nurses who have come back from Retirement

## CIBSE HERITAGE GROUP

Special Newsletter No.2 April 2020

### THANK YOU - ALL NHS & SUPPORT STAFF

*This Covid-19 coronavirus has virtually brought the human population on the planet to a standstill, lost tens of thousands of lives, millions of jobs and unleashed a devastating global economic recession. We pay tribute to our NHS, the Support Staff and everyone dedicated to doing their job to keep us safe, as we show in the following pictures some of these heroes working in this time of crisis.*



Inside an Intensive Care Unit fighting coronavirus at University College Hospital (BBC)

## CIBSE HERITAGE GROUP

Special Newsletter No.3 May 2020

### THANK YOU - ALL NHS & SUPPORT STAFF

*Previously the Special Newsletters featured pictures of the ongoing fight against the Covid-19 coronavirus. This is now extensively covered by the media. Our tribute to all medical and support staff in hospitals continues with a selection of historic photographs including many from the First World War. This period took place during the first quarter of the life span of our Institution founded in 1897 to become the Institution of Heating and Ventilating Engineers (IHVE).*



Army Hospital Ward in France with stove heating. American Soldiers in festive mood celebrating in December 1918 after the Armistice signalled peace



Brighton Royal Pavilion Music Room used as a hospital ward for wounded Indian servicemen 1914-16. Note the ornate electric chandeliers (originally gas).

## CIBSE HERITAGE GROUP

Special Newsletter No.4 July 2020

### THANK YOU - ALL NHS & SUPPORT STAFF

*We continue our tribute to hospitals and staff during earlier times with a selection of historic photographs including many from the Second World War taking place around the second quarter of the life of our Institution founded in 1897 as the Institution of Heating and Ventilating Engineers (IHVE).*



Children's Ward at St Marys Hospital in Eastbourne 1930s



A bombed hospital ward 1940 (painted by Kathleen Guthrie)



# SPECIAL ELECTRONIC NEWSLETTERS

## CIBSE HERITAGE GROUP

Special Newsletter No.5

August 2020

### THANK YOU - ALL NHS & SUPPORT STAFF

We continue our tribute to earlier hospitals and staff with a selection of historic photographs including many from early years of the NHS which took place around the third quarter of the life of our Institution founded in 1897 as the Institution of Heating and Ventilating Engineers (IHVE).



Children in Caleb Diplock Ward at Guy's Hospital, London 1950s



Digby Ward at the Dorset County Hospital in 1957

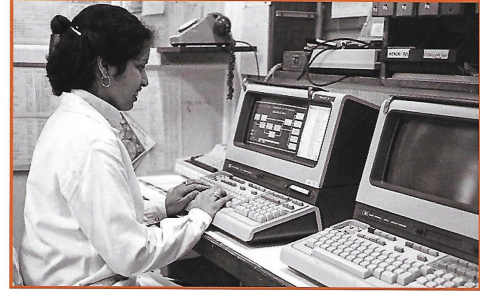
## CIBSE HERITAGE GROUP

Special Newsletter No.6

September 2020

### THANK YOU ALL NHS & SUPPORT STAFF

We continue our tribute to hospitals and staff since the formation of the CIBSE in 1976 with a selection of photographs of the NHS including the 70th Anniversary celebrations in 2018.



Doctor using an early hospital computer in the 1980s



An early NHS image Oldham Royal Hospital

### KEEPING HOSPITAL ENGINEERING SERVICES OPERATING



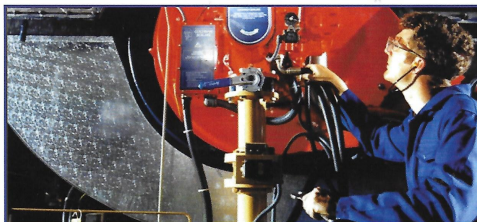
Mechanical Ventilation



Medical Gases



Standby Diesel Electric Generator Set



Oil-fired Steam Boiler for Power, Heating and Hot Water Service

The CIBSE Heritage Group is made up of a number of like minded professionals, many retired, who have spent a lifetime in building services and bring that experience to bear in discovering, analysing and recording the history of the Built Environment this essential aspect of the world we live in. It is the longest established CIBSE Special Interest Group (1973).

### ENGINEERING SERVICES ESSENTIAL FOR HOSPITAL FUNCTIONING



Southampton University Hospital doubles CHP (Combined Heat and Power) Capacity 2013



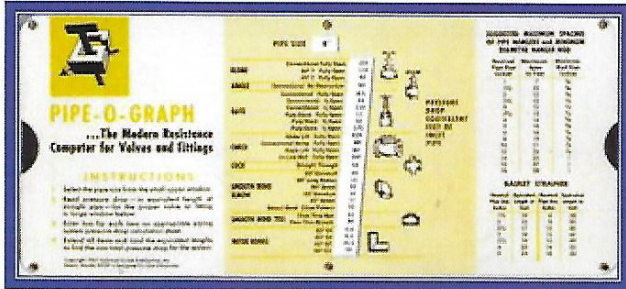
Gas-fired Steam Boilers at Bedford Hospital 2017

The CIBSE Heritage Group is made up of a number of like-minded professionals, many retired, who have spent a lifetime in building services and bring that experience to bear in discovering, analysing and recording the history of the Built Environment, this essential aspect of the world we live in. It is the longest established CIBSE Special Interest Group (1973).

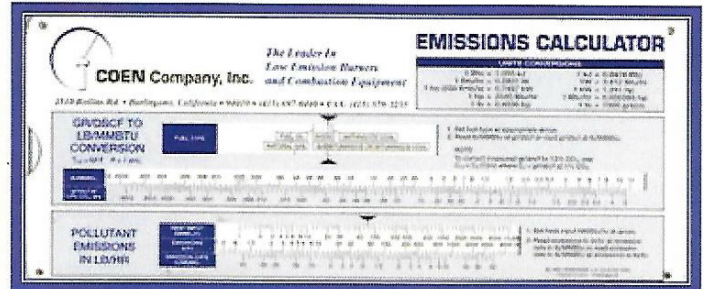


# THE HERITAGE GROUP ARCHIVE AT CARDIFF

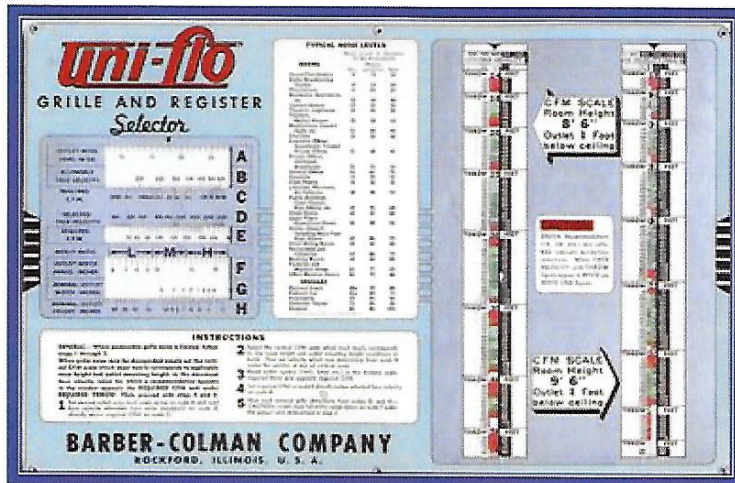
In Newsletter No.42 it was reported that our Library and Archive Collection of Books and Documents had been donated to Cardiff University Library where it is housed in the Bute Building. A further donation has been made to the Group's Collection of over 100 calculating devices in use by building services engineers in days gone by, together with a number of DVDs and CDs on Building Engineering Services Societies and Companies.



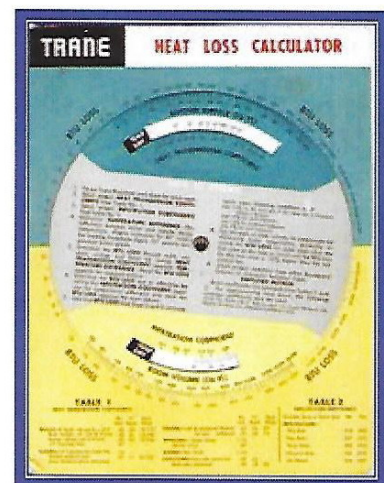
1965 Resistance of Valves & Fittings to Flow



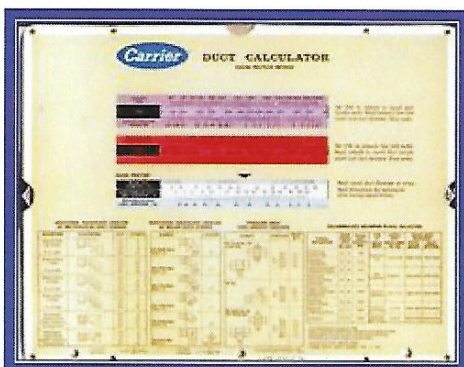
1995 Combustion Emissions Calculator



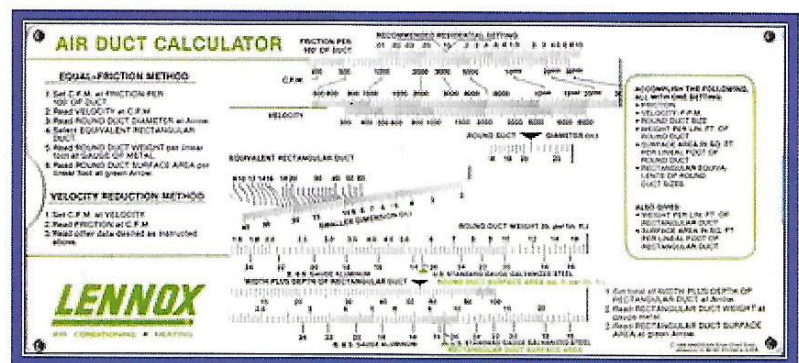
Grille & Register Selector, probably 1960's



1956 Heat Loss Calculator



1968 Duct Sizing Calculator



1985 Duct Sizing Calculator

This Newsletter is sponsored by



Historic England